

# FCC Test Report

Report No.: AGC08409200305FE06

**FCC ID** : 2AHASBT21L  
**APPLICATION PURPOSE** : Original Equipment  
**PRODUCT DESIGNATION** : Bluetooth FM Transmitter  
**BRAND NAME** : ArmorAll, Monster  
**MODEL NAME** : BT21L, AHF9-1011-BLK, MHF9-1009-BLK  
**APPLICANT** : JEM ACCESSORIES,INC  
**DATE OF ISSUE** : May 12, 2020  
**STANDARD(S)** : FCC Part 15.239  
**REPORT VERSION** : V1.0

Attestation of *Global Compliance*(Shenzhen) Co., Ltd

**CAUTION:**

This report shall not be reproduced except in full without the written permission of the test laboratory and shall not be quoted out of context.



Attestation of Global Compliance

Attestation of Global Compliance(Shenzhen)Co.,Ltd.

Add: 2/F., Building 2, Sanwei Chaxi Industrial Park, Sanwei Community,  
Hangcheng Street, Bao'an District, Shenzhen, Guangdong, China

Tel: +86-755 2523 4088

E-mail: agc@agc-cert.com

Service Hotline: 400 089 2118

### Report Revise Record

Report Version	Revise Time	Issued Date	Valid Version	Notes
V1.0	/	May 12, 2020	Valid	Original Report



## TABLE OF CONTENTS

<b>1. VERIFICATION OF CONFORMITY .....</b>	<b>4</b>
<b>2. GENERAL INFORMATION .....</b>	<b>5</b>
2.1.PRODUCT DESCRIPTION .....	5
<b>3. MEASUREMENT UNCERTAINTY.....</b>	<b>5</b>
<b>4. DESCRIPTION OF TEST MODES.....</b>	<b>5</b>
<b>5. SYSTEM TEST CONFIGURATION .....</b>	<b>6</b>
5.1. EQUIPMENT USED IN EUT SYSTEM.....	6
5.2. SUMMARY OF TEST RESULTS.....	6
<b>6. TEST FACILITY .....</b>	<b>7</b>
<b>7. RADIATED EMISSION .....</b>	<b>8</b>
7.1. MEASUREMENT PROCEDURE .....	8
7.2.TEST SETUP .....	10
7.3. TEST RESULTFOR FIELD STRENGTH OF FUNDAMENTAL .....	11
7.4. TEST RESULT FOR FIELD STRENGTH OF BAND EDGE EMISSION.....	11
7.5. TEST RESULT FOR SPURIOUS EMISSION.....	12
<b>8. BANDWIDTH.....</b>	<b>14</b>
8.1. MEASUREMENT PROCEDURE .....	14
8.2. TEST SETUP .....	14
8.3. TEST RESULT .....	15
<b>APPENDIX A: PHOTOGRAPHS OF TEST SETUP.....</b>	<b>17</b>
<b>APPENDIX B:PHOTOGRAPHS OF EUT .....</b>	<b>18</b>

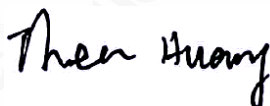
## 1. VERIFICATION OF CONFORMITY

<b>Applicant</b>	JEM ACCESSORIES,INC
<b>Address</b>	32 Brunswick Avenue Edison NJ 08817
<b>Manufacturer</b>	JEM ACCESSORIES,INC
<b>Address</b>	32 Brunswick Avenue Edison NJ 08817
<b>Factory</b>	JEM ACCESSORIES,INC
<b>Address</b>	32 Brunswick Avenue Edison NJ 08817
<b>Product Designation</b>	Bluetooth FM Transmitter
<b>Brand Name</b>	ArmorAll, Monster
<b>Test Model</b>	BT21L
<b>Series Model</b>	AHF9-1011-BLK, MHF9-1009-BLK
<b>Difference Description</b>	All the same except for the model name.
<b>Date of test</b>	Apr. 01, 2020 to May 12, 2020
<b>Deviation</b>	No any deviation from the test method
<b>Condition of Test Sample</b>	Normal
<b>Test Result</b>	Pass
<b>Report Template</b>	AGCRT-US-BR/RF (2013-03-01)

We hereby certify that:

The above equipment was tested by Attestation of Global Compliance (Shenzhen) Co., Ltd. The test data, data evaluation, test procedures, and equipment configurations shown in this report were made in accordance with the procedures given in ANSI C63.10 (2013) and the energy emitted by the sample EUT tested as described in this report is in compliance with radiated emission limits of FCC part 15.239.

Prepared By



Thea Huang  
(Project Engineer)

May 12, 2020

Reviewed By



Max Zhang  
(Reviewer)

May 12, 2020

Approved By



Forrest Lei  
(Authorized Officer)

May 12, 2020

## 2. GENERAL INFORMATION

### 2.1.PRODUCT DESCRIPTION

A major technical description of EUT is described as following

Operation Frequency	88.1MHz-107.9MHz
Field Strength(3m)	45.97dBuV/m(AVG)@3m
Modulation	FM
Number of channels	199(Channel spacing 100kHz)
Hardware Version	MB BT21L_6922E_V1.2,EB JMS-BT21-CE-POWER-V1.1
Software Version	97C8-2EAA20E6
Antenna Designation	Integral Antenna (Met 15.203 Antenna requirement)
Antenna Gain	-0.58dBi
Power Supply	DC 12/24V

**NOTE:** About the EUT, please refer to User's Manual.

## 3. MEASUREMENT UNCERTAINTY

- Uncertainty of Radiated Emission below 1GHz,  $U_c = \pm 3.9$  dB
- Uncertainty of Radiated Emission above 1GHz,  $U_c = \pm 4.8$  dB

## 4. DESCRIPTION OF TEST MODES

NO.	TEST MODE DESCRIPTION
1	Transmitting mode(Low channel)
2	Transmitting mode(Middle channel)
3	Transmitting mode(High channel)

Note: 1. For Radiated Emission, 3axis were chosen for testing for each applicable mode.

2. All the requirements have been tested by modulating the transmitter with a 2.5 kHz tone at a fixed level which set to the manufacturer's maximum rated input to the modulator.

3. Only the result of the worst case was recorded in the report, if no other cases.

## 5. SYSTEM TEST CONFIGURATION

### 5.1. EQUIPMENT USED IN EUT SYSTEM

Item	Equipment	Model No.	ID or Specification	Remark
1	Bluetooth FM Transmitter	BT21L	2AHASBT21L	EUT
2	TF Card	Kingston	SDA10	A.E
3	U-disk	Kingston	DT 101G2	A.E
4	Car battery	N/A	12V 60Ah	AE
5	Car battery	N/A	12V 60Ah	AE
6	load	N/A	2ohm	AE
7	load	N/A	4ohm	AE
8	Power line	N/A	1m unshielded	AE

### 5.2. SUMMARY OF TEST RESULTS

FCC RULES	DESCRIPTION OF TEST	RESULT
15.239	Field Strength of Fundamental and Spurious Emission	Compliant
15.215	Bandwidth	Compliant
15.209	Line Conducted Emission	N/A

**Note:** The EUT was supplied by car battery.

## 6. TEST FACILITY

<b>TestSite</b>	Attestation of Global Compliance(Shenzhen) Co., Ltd
<b>Location</b>	1-2/F,Building19,JunfengIndustrialPark,ChongqingRoad,HepingCommunity,Fuhai Street,Bao'anDistrict,Shenzhen,Guangdong,China
<b>Designation Number</b>	CN1259
<b>FCC Test Firm Registration Number</b>	975832
<b>A2LA Cert. No.</b>	5054.02
<b>Description</b>	Attestation of Global Compliance(Shenzhen) Co., Ltd is accredited by A2LA

## TEST EQUIPMENT OF RADIATED EMISSION TEST

Equipment	Manufacturer	Model	S/N	Cal. Date	Cal. Due
TEST RECEIVER	R&S	ESCI	10096	Jun. 12, 2019	Jun. 11, 2020
EXA Signal Analyzer	Aglient	N9010A	MY53470504	Dec. 12, 2019	Dec. 11, 2020
Attenuator	ZHINAN	E-002	N/A	Sep. 09, 2019	Sep. 08, 2020
Active loop antenna (9K-30MHz)	ZHINAN	ZN30900C	18051	Jun. 13, 2018	Jun. 12, 2020
Double-Ridged Waveguide Horn	ETS LINDGREN	3117	00034609	May. 17, 2018	May 16, 2020
Broadband Preamplifier	ETS LINDGREN	3117PA	00225134	Oct. 15, 2019	Oct. 16, 2020
ANTENNA	SCHWARZBECK	VULB9168	494	Sep. 20, 2019	Sep. 19, 2021
Test software	FARA	EZ-EMC (Ver RA-03A)	N/A	N/A	N/A



## 7. RADIATED EMISSION

### 7.1. MEASUREMENT PROCEDURE

1. The EUT was placed on the top of the turntable 0.8 or 1.5 meter above ground. The phase center of the receiving antenna mounted on the top of a height-variable antenna tower was placed 3 meters far away from the turntable.
2. Power on the EUT and all the supporting units. The turntable was rotated by 360 degrees to determine the position of the highest radiation.
3. The height of the broadband receiving antenna was varied between one meter and four meters above ground to find the maximum emissions field strength of both horizontal and vertical polarization.
4. For each suspected emissions, the antenna tower was scan (from 1 M to 4 M) and then the turntable was rotated (from 0 degree to 360 degrees) to find the maximum reading.
5. Set the test-receiver system to Peak or CISPR quasi-peak Detect Function with specified bandwidth under Maximum Hold Mode.
6. For emissions above 1GHz, use 1MHz RBW and 3MHz VBW for peak reading. Place the measurement antenna away from each area of the EUT determined to be a source of emissions at the specified measurement distance, while keeping the measurement antenna aimed at the source of emissions at each frequency of significant emissions, with polarization oriented for maximum response. The measurement antenna may have to be higher or lower than the EUT, depending on the radiation pattern of the emission and staying aimed at the emission source for receiving the maximum signal. The final measurement antenna elevation shall be that which maximizes the emissions. The measurement antenna elevation for maximum emissions shall be restricted to a range of heights of from 1 m to 4 m above the ground or reference ground plane.
7. When the radiated emissions limits are expressed in terms of the average value of the emissions, and pulsed operation is employed, the measurement field strength shall be determined by averaging over one complete pulse train, including blanking intervals, as long as the pulse train does not exceed 0.1 seconds. As an alternative (provided the transmitter operates for longer than 0.1 seconds) or in cases where the pulse train exceeds 0.1 seconds, the measured field strength shall be determined from the average absolute voltage during a 0.1 second interval during which the field strength is at its maximum values.
8. If the emissions level of the EUT in peak mode was 3 dB lower than the average limit specified, then testing will be stopped and peak values of EUT will be reported, otherwise, the emissions which do not have 3 dB margin will be repeated one by one using the quasi-peak method for below 1GHz.
9. For testing above 1GHz, the emissions level of the EUT in peak mode was lower than average limit (that means the emissions level in peak mode also complies with the limit in average mode), then testing will be stopped and peak values of EUT will be reported, otherwise, the emissions will be measured in average mode again and reported.
10. In case the emission is lower than 30MHz, loop antenna has to be used for measurement and the recorded data should be QP measured by receiver. High - Low scan is not required in this case.



The following table is the setting of spectrum analyzer and receiver.

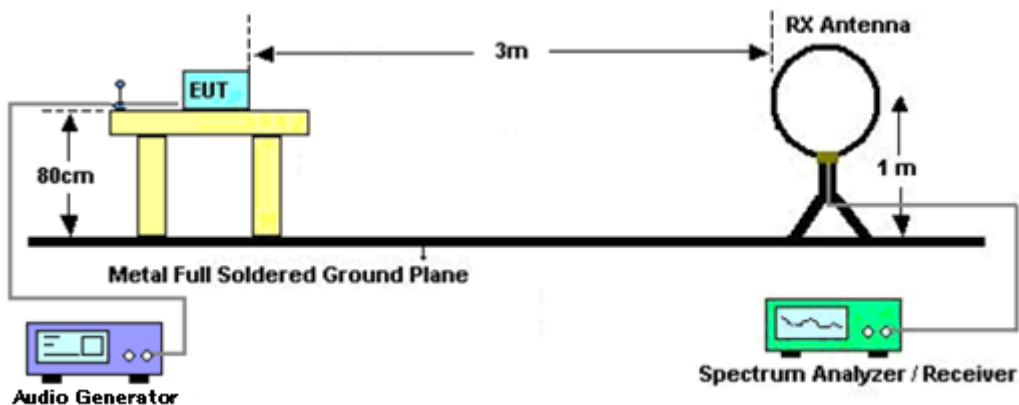
Spectrum Parameter	Setting
Start ~Stop Frequency	9KHz~150KHz/RB 200Hz for QP
Start ~Stop Frequency	150KHz~30MHz/RB 9KHz for QP
Start ~Stop Frequency	30MHz~1000MHz/RB 120KHz for QP
Start ~Stop Frequency	1GHz~26.5GHz 1MHz/3MHz for Peak, 1MHz/3MHz for Average

Receiver Parameter	Setting
Start ~Stop Frequency	9KHz~150KHz/RB 200Hz for QP
Start ~Stop Frequency	150KHz~30MHz/RB 9KHz for QP
Start ~Stop Frequency	30MHz~1000MHz/RB 120KHz for QP

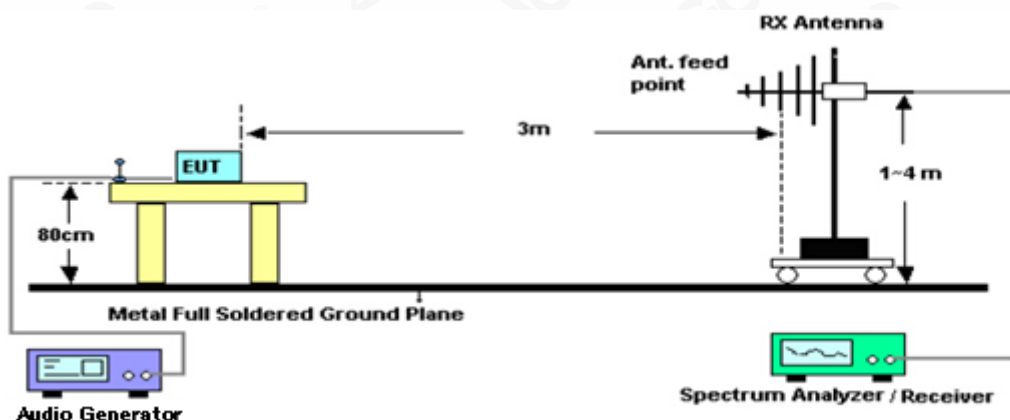


## 7.2.TEST SETUP

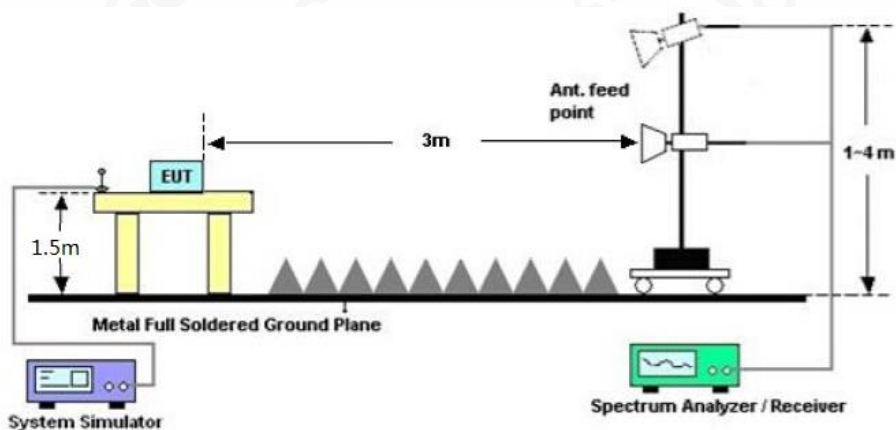
### Radiated Emission Test-Setup Frequency Below 30MHz



### RADIATED EMISSION TEST SETUP 30MHz-1000MHz



### RADIATED EMISSION TEST SETUP ABOVE 1000MHz



### 7.3. TEST RESULT FOR FIELD STRENGTH OF FUNDAMENTAL

Frequency MHz	Polarization	Level dB(uV/m) PK	Limit dB(uV/m) PK	Margin dB	Pass/Fail	Detector
88.100	H	47.43	67.96	20.53	Pass	PK
88.100	V	47.66	67.96	20.30	Pass	PK
98.000	H	43.08	67.96	24.88	Pass	PK
98.000	V	45.29	67.96	22.67	Pass	PK
107.900	H	47.35	67.96	20.61	Pass	PK
107.900	V	45.48	67.96	22.48	Pass	PK
Frequency MHz	Polarization	Level dB(uV/m) AV	Limit dB(uV/m) AV	Margin dB	Pass/Fail	Detector
88.100	H	45.64	47.96	2.32	Pass	AV
88.100	V	45.97	47.96	1.99	Pass	AV
98.000	H	42.42	47.96	5.54	Pass	AV
98.000	V	44.57	47.96	3.39	Pass	AV
107.900	H	43.68	47.96	4.28	Pass	AV
107.900	V	45.23	47.96	2.73	Pass	AV

### 7.4. TEST RESULT FOR FIELD STRENGTH OF BAND EDGE EMISSION

Frequency MHz	Polarization	Level dB(uV/m) QP	Limit dB(uV/m) QP	Margin dB	Pass/Fail	Detector
88.000	H	34.25	40	5.75	Pass	QP
88.000	V	33.59	40	6.41	Pass	QP
108.000	H	32.76	43.5	10.74	Pass	QP
108.000	V	31.84	43.5	11.66	Pass	QP

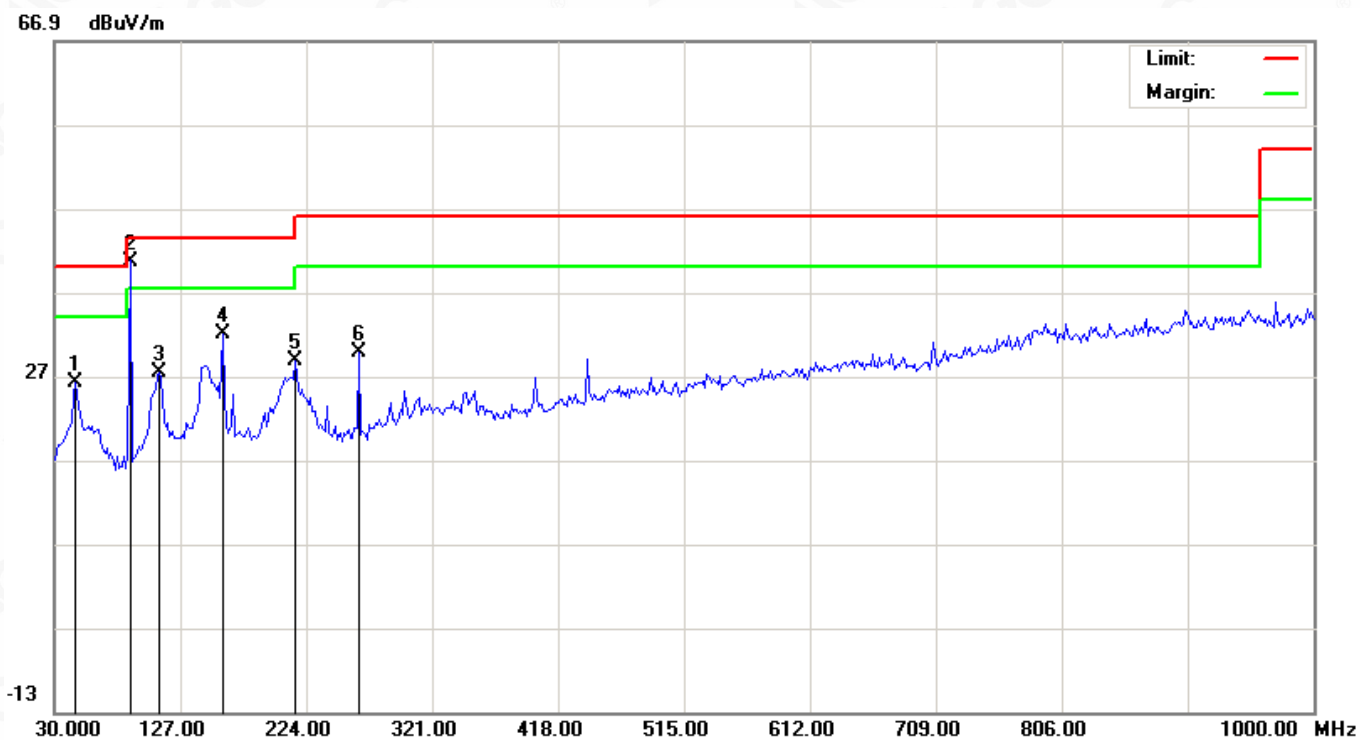
Note: The above two frequencies are the worst case for the band edge emission test.

## 7.5. TEST RESULT FOR SPURIOUS EMISSION

### RADIATED EMISSION BELOW 30MHz

No emission found between lowest internal used/generated frequencies to 30MHz.

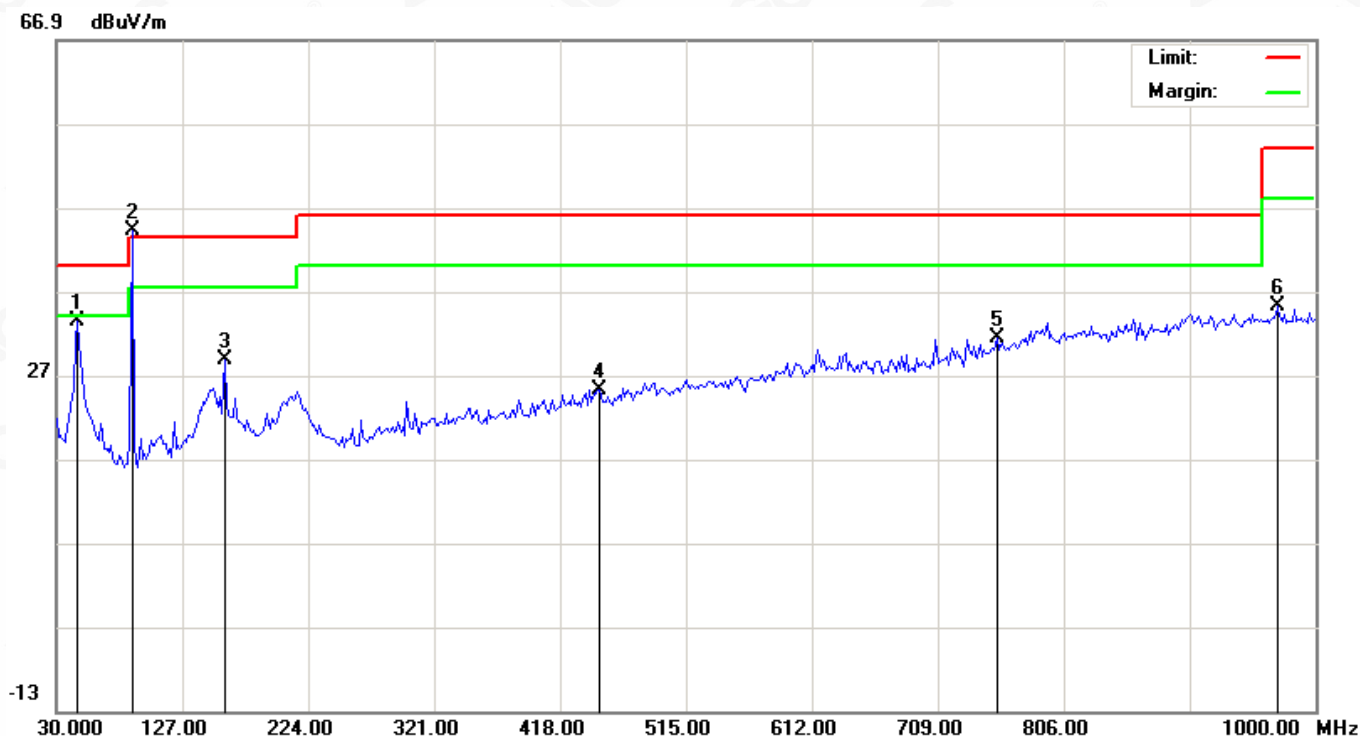
### RADIATED EMISSION BELOW 1GHZ-Horizontal



No.	Mk	Freq.	Reading	Factor	Measurement	Limit	Over	Detector	Antenna Height	Table Degree	Comment
		MHz	dBuV	dB/m	dBuV/m	dBuV/m	dB		cm	degree	
1		46.1667	6.35	19.87	26.22	40.00	-13.78	peak			
2	*	88.1000	25.73	14.97	40.70	47.96	-7.26	peak			
3		110.8333	10.33	17.07	27.40	43.50	-16.10	peak			
4		159.3333	12.74	19.19	31.93	43.50	-11.57	peak			
5		215.9167	11.83	17.00	28.83	43.50	-14.67	peak			
6		264.4166	11.18	18.67	29.85	46.00	-16.15	peak			

RESULT: PASS

# RADIATED EMISSION BELOW 1GHZ-Vertical



No.	Mk	Freq.	Reading	Factor	Measurement	Limit	Over	Detector	Antenna Height	Table Degree	Comment
		MHz	dBuV	dB/m	dBuV/m	dBuV/m	dB		cm	degree	
1		46.1666	13.50	19.87	33.37	40.00	-6.63	peak			
2	*	88.1000	29.21	14.97	44.18	47.96	-3.78	peak			
3		159.3333	9.57	19.19	28.76	43.50	-14.74	peak			
4		448.7167	1.18	23.96	25.14	46.00	-20.86	peak			
5		754.2667	1.97	29.38	31.35	46.00	-14.65	peak			
6		970.8999	2.89	32.31	35.20	54.00	-18.80	peak			

## RESULT: PASS

### Note:

1. Factor=Antenna Factor+ Cable loss-Amplifier gain, Margin=Measurement-Limit.
2. The "Factor" value can be calculated automatically by software of measurement system.
3. All test modes had been tested. The Low channel is the worst case and recorded in the report.
4. Other emissions from 1G to 1.08GHz are considered as ambient noise. No recording in the test report.

## 8. BANDWIDTH

### 8.1. MEASUREMENT PROCEDURE

1. Set the parameters of SPA as below:

Centre frequency = Operation Frequency

RBW=3KHz

VBW=10KHz

Span: 300kHz

Sweep time: Auto

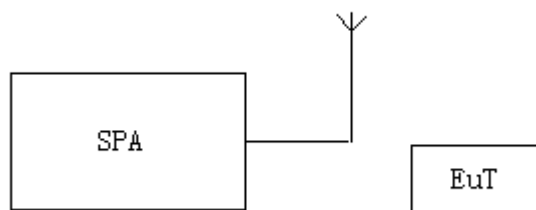
For the occupied bandwidth measurements, the input signal shall be a 2.5 kHz tone.

☐ The level of the tone shall be 16 dB higher than that required to produce a frequency deviation of 75 kHz, or 50% of the manufacturer's rated deviation, whichever is less.

☒ Alternatively, in the event that a 16 dB increase cannot be achieved, the level of the tone shall be set to the manufacturer's maximum rated input to the modulator.

2. Set the EUT to continue transmitting mode. Allow the trace to stabilize. Use the "N dB down" function of SPA to define the bandwidth.
3. Record the plots and Reported.

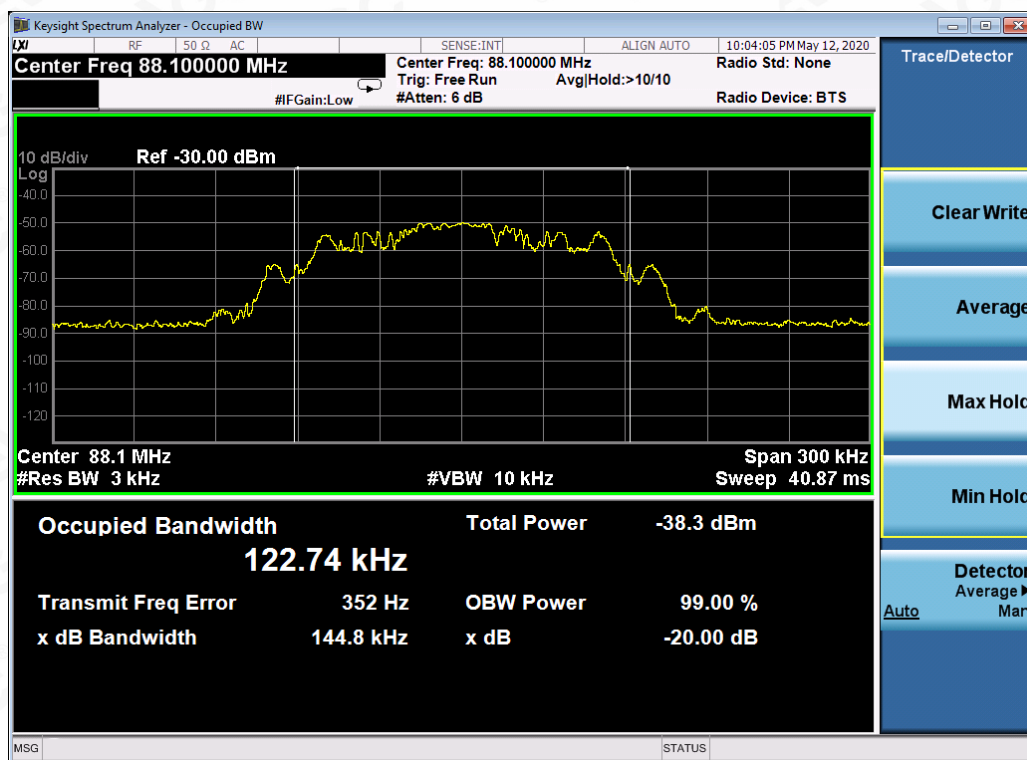
### 8.2. TEST SETUP



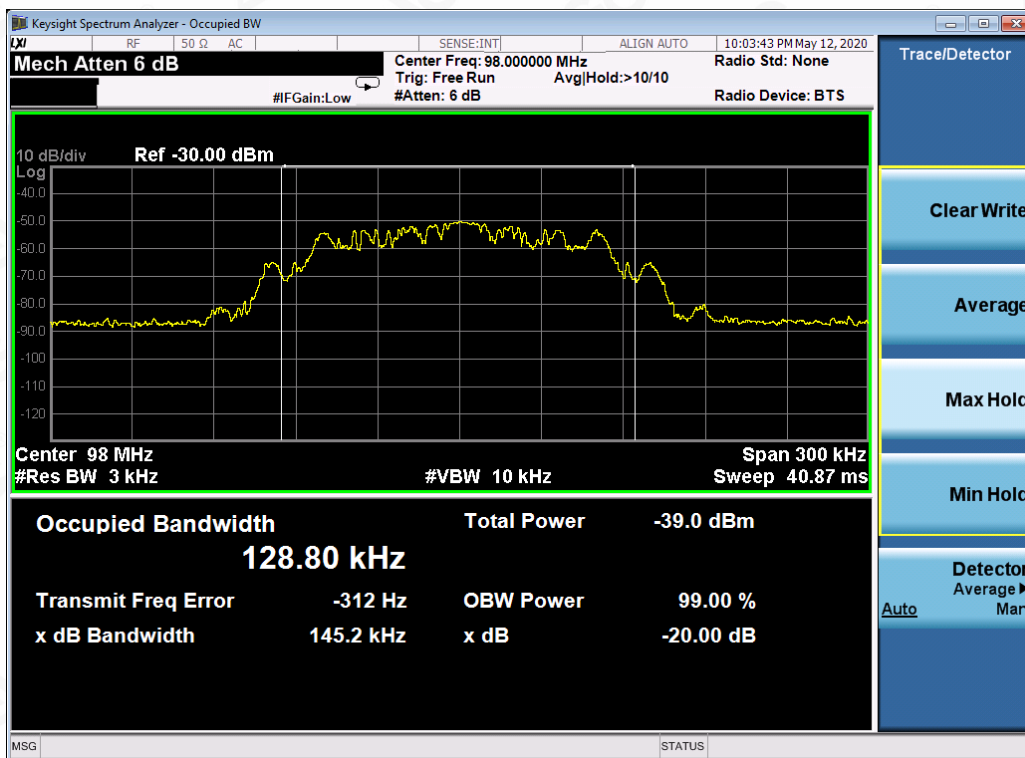
### 8.3. TEST RESULT

Channel	Channel Frequency(MHz)	-20dB bandwidth (kHz)	Limit(kHz)
Low	88.1	144.8	200
Middle	98.0	145.2	200
High	107.9	146.1	200

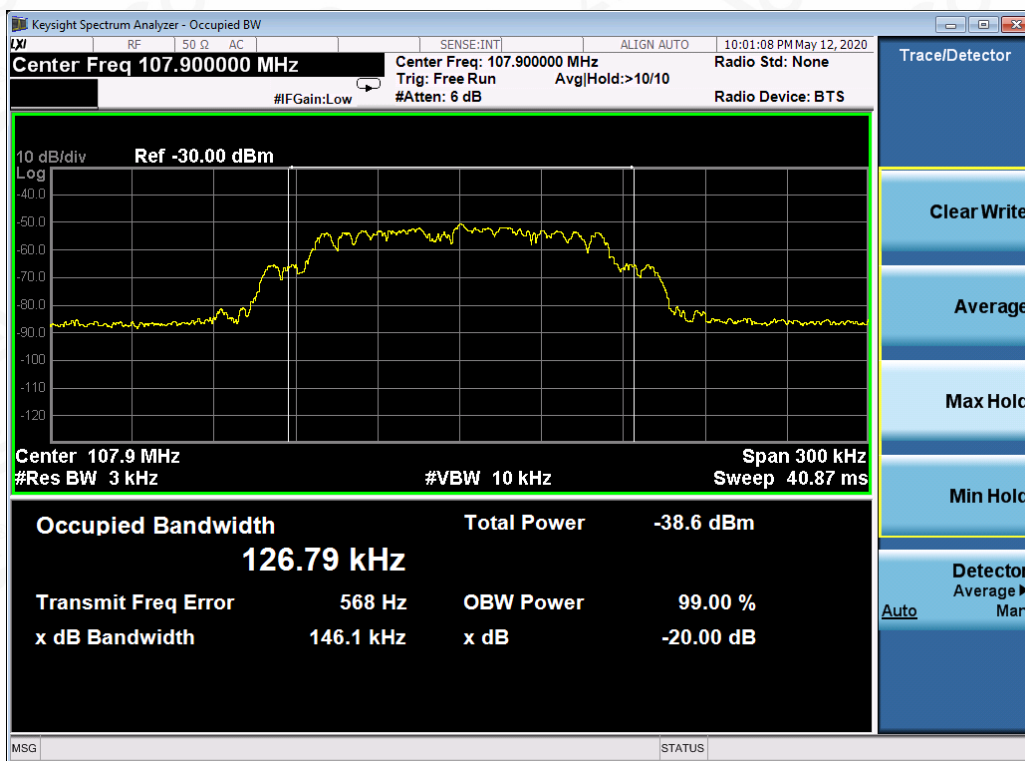
TEST PLOT OF BANDWIDTH FOR LOW CHANNEL



### TEST PLOT OF BANDWIDTH FOR MIDDLE CHANNEL

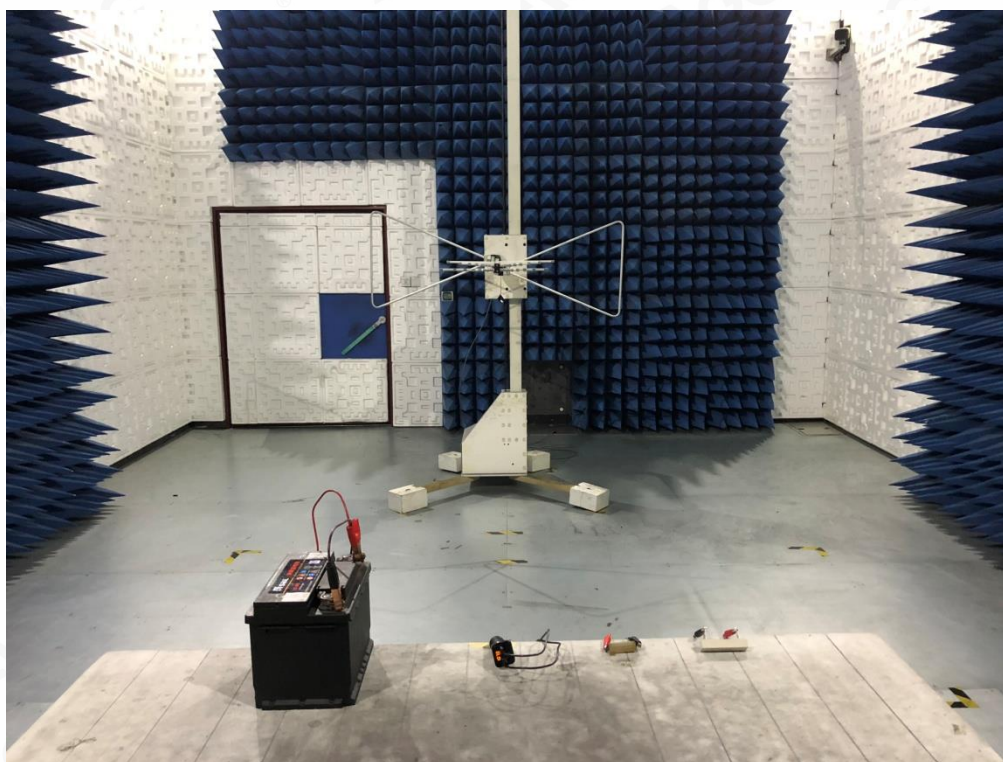


### TEST PLOT OF BANDWIDTH FOR HIGH CHANNEL



## APPENDIX A: PHOTOGRAPHS OF TEST SETUP

### RADIATED EMISSION TEST SETUP BELOW 1G



RADIATED EMISSION TEST SETUP ABOVE 1G



## APPENDIX B: PHOTOGRAPHS OF EUT

TOP VIEW OF EUT



BOTTOM VIEW OF EUT



FRONT VIEW OF EUT



BACK VIEW OF EUT



LEFT VIEW OF EUT



RIGHT VIEW OF EUT



VIEW OF EUT(Port)-1



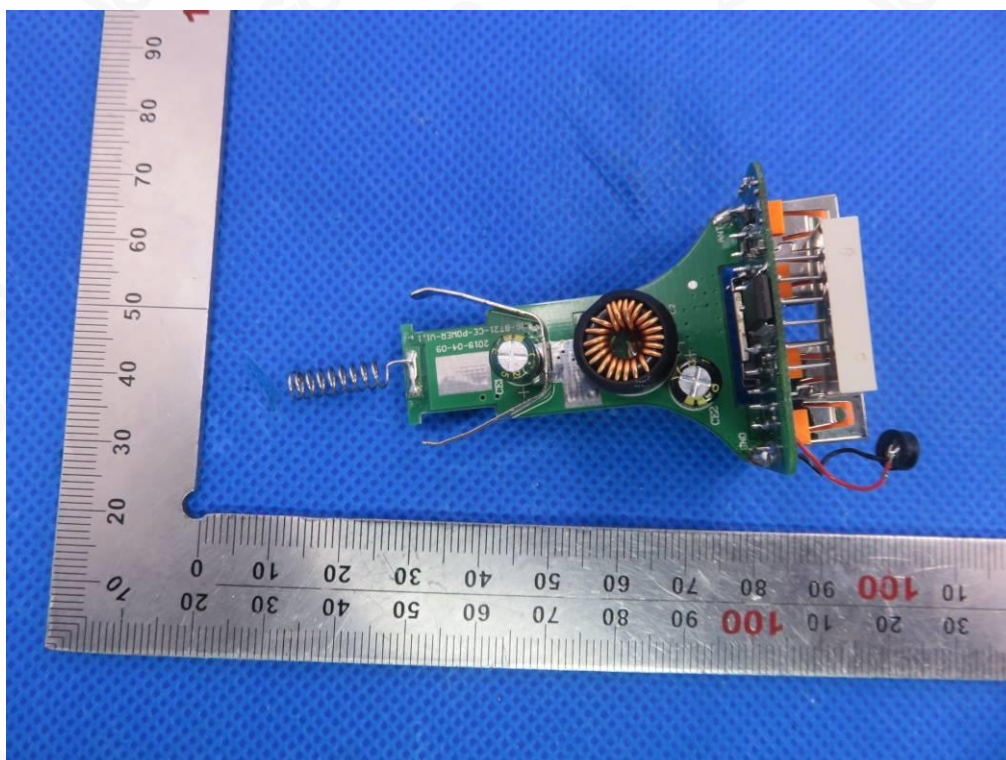
VIEW OF EUT(Port)-2



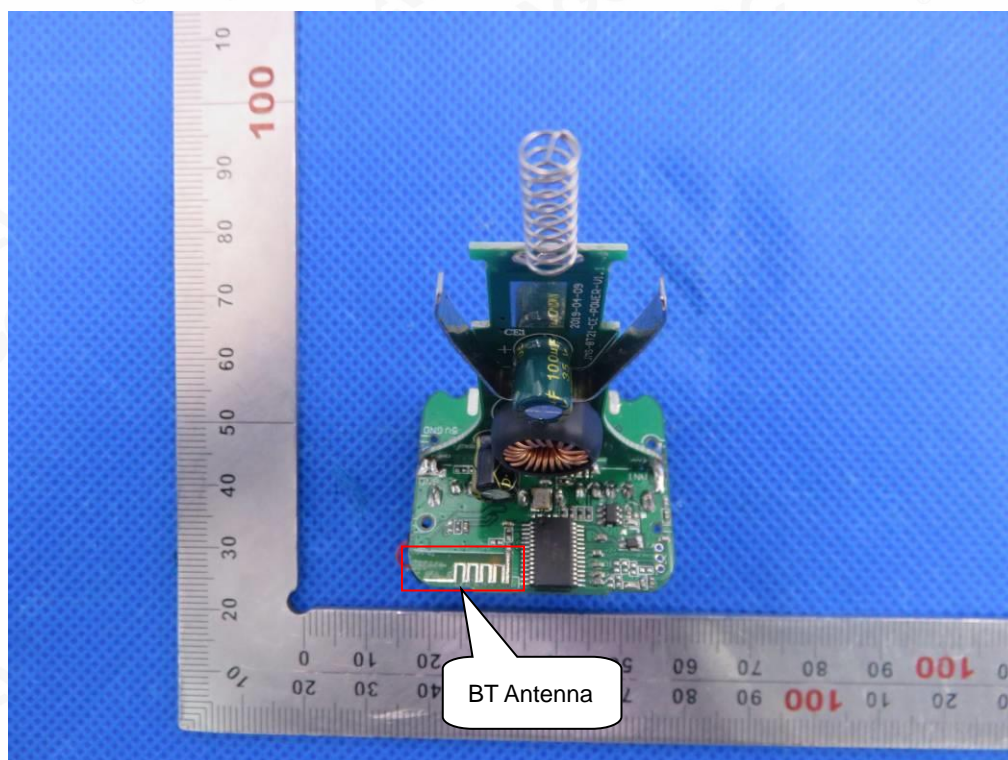
# OPEN VIEW OF EUT



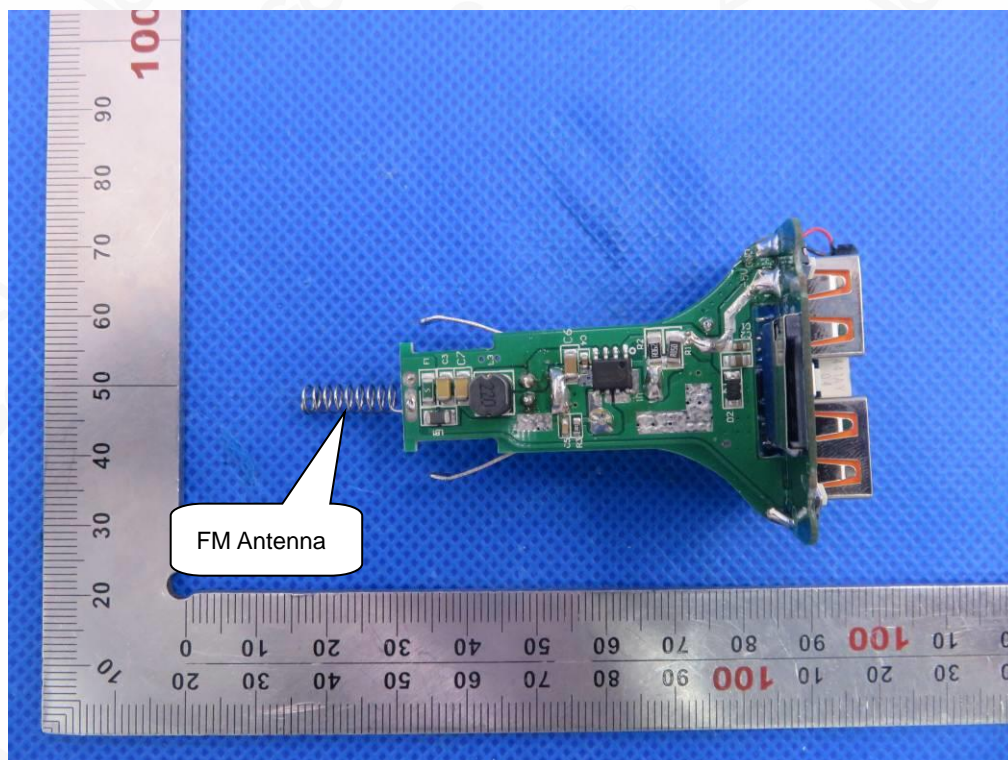
# INTERNAL VIEW OF EUT-1



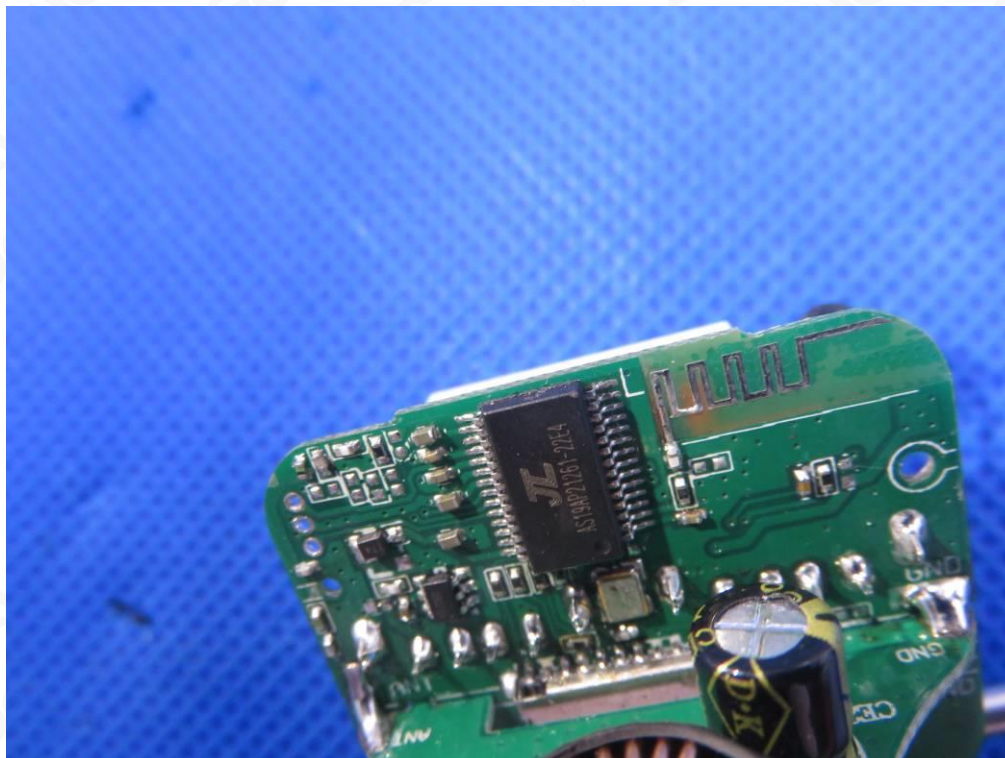
INTERNAL VIEW OF EUT-2



INTERNAL VIEW OF EUT-3



INTERNAL VIEW OF EUT-4



----END OF REPORT----



**Attestation of Global Compliance**

Attestation of Global Compliance(Shenzhen)Co.,Ltd.

Add: 2/F., Building 2, Sanwei Chaxi Industrial Park, Sanwei Community,  
Hangcheng Street, Bao'an District, Shenzhen, Guangdong, China

Tel: +86-755 2523 4088

E-mail: agc@agc-cert.com

Service Hotline: 400 089 2118