



## User Guide



DVP-254

*Multimedia Player*

**AivX**



※ Before operating the unit, please read this manual thoroughly, and retain it for future reference.

※ Due to the static, Mis-use, inferior product, your data could be damaged.

Handle with care when you use your valuable data.

Please back up your valuable data for safe work.



**Sarotech Co., Ltd.**

## 1 . Before you begin

AivX is a sophisticated portable Multimedia player. You may enjoy multimedia file without PC.  
AivX support 5.1 ch and FM stereo output for Home theater or Car theater.

## 2 . Main features

1. Able to revive Audio and Video file that downloaded PC to TV (HDTV)
2. USB2.0 external storage function
3. Support analog 2ch stereo, digital 5.1ch Coaxial, FM stereo audio.
4. Support firmware upgrade

## 3 . Check supplied Accessories

- |  |                                     |
|--|-------------------------------------|
| 1. DVP-254 unit  | 2. Remote control (Include battery) |
| 3. AV cable (Composite image, Stereo sound, FM antenna function) |                                     |
| 4. Component cable   | 5. 5.1ch conversion jack            |
| 6. AC power adaptor  | 7. USB cable                        |
| 8. Driver installation CD  | 9. A bag                            |
| 10. User guide   | 11. Screws                          |

■ Separate sale item : Exterior remote control receiver, Car power adaptor

## 4 . Warning

1. If you connect USB 2.0 product to USB 1.1 Host Adaptor, operating speed would be USB 1.1 speed (12Mbps).
2. If you want to use USB 2.0 product with full speed USB 2.0 speed (Max. 480Mbps), you should use PC with USB 2.0 Host Adaptor.
3. We recommend HDD within 9.5mm in size and bigger than 6GBytes in capacity.
4. Be careful for shock hazard.
5. Do not expose high temperature or moisture. It may cause malfunction.

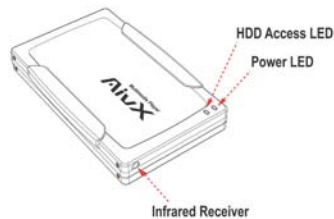
## 5. Requirement

- Over 586 Pentium2 PC or MAC
- USB port should be available.

## 6. Name of each part and function

### 6-1. Front side

1. Power LED: Light on when power is supplied.
2. HDD Access LED: Light on when read or write HDD data.
3. Infrared ray receive part: Signal-receiving part from remote control.



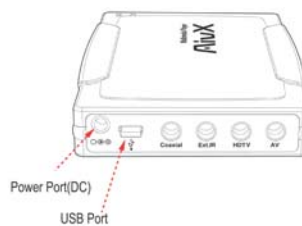
### 6-2. Back side

1. Power port: DC 5v power input terminal (AC power adaptor, Use Car power adaptor).



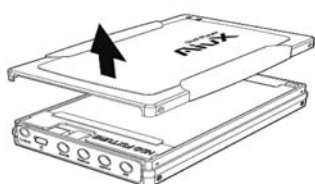
**Caution :** please wait about 10 second after connect power adaptor and press "power"key.  
(It takes about 10 second to be stabilized.)

2. USB port: Use for data transferring with PC.
3. Coaxial: Use for outputting digital 5.1ch.
4. Ext.IR: Use for connecting to outside remote control receiver.
5. HDTV: Use for outputting component (YPbPr) video signal.
6. AV: Use for outputting composite video and stereo signal and also used for FM antenna.

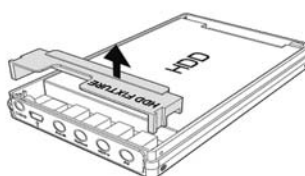


## 7. How to input HDD

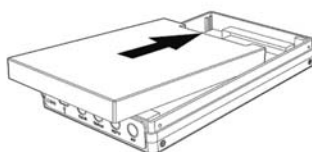
1. Detach front case.



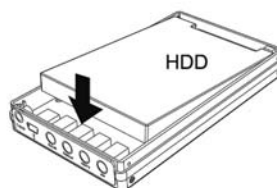
2. Detach Fixture.



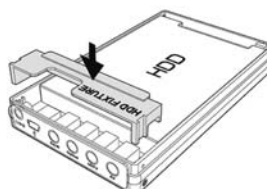
3. Connect a new HDD to PCB 44 pin connector. At this time, please set No.1 pin as you connect HDD and PCB connector.



4. Sliding HDD to bottom side.

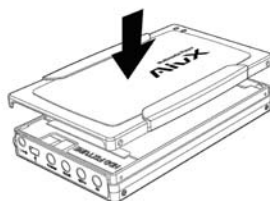


5. Attach fixture.



Caution : Leave remaining 4 pins, setting pin for Master/Slave, at left side of HDD.

6. Close front case.



7. Screw 4 fixing bolts to case side with Screwdriver.



## 8. Connecting to PC

This method is to use AivX as a high capacity storage.



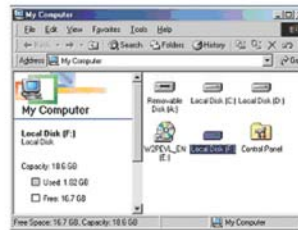
**Caution :** Generally AivX operating without additional power. However it may short USB powering some PC case. You may use provided AC power adaptor.

### 8-1. When you use Windows ME/2000/XP

It could be recognized without addition driver.


#### ■ Connecting

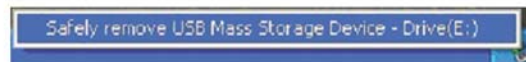
As you connect your PC AivX with USB cable, automatically a new drive is created to "My computer" in your desktop. Now you may use the drive.



**Caution :** If you use a new HDD to AivX, your computer may not recognize automatically. In this case, please do FDISK and FORMAT. Please refer to the Installation CD at "/MANUAL/FDISK&FORMAT/fdisk&format.pdf"

#### ■ Disconnecting

1. Select the USB connect icon (  ) that is located lower right corner with your left mouse Button.
2. If the process is in good mode, you may see the message that you may disconnect the unit in safe way. Now you may disconnect the AivX.



## 8-2. When you use Windows 98/98SE

You need to install new driver when you use Windows.

### ■ Driver Installation

1. Execute "/Windows/USB/PL2507\_Driver\_Prolific\_1301.exe" from provided CD.
2. Select "next" in installation wizard. Then continually select "next" in coming windows.
3. Select "end" from completion confirmation window. Now the Driver installation is completed.

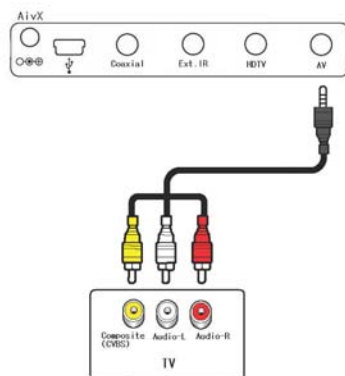
### ■ Connection, disconnection

Please refer to contents of Windows ME/2000/XP.

## 9. Connection to Video/Audio

### 9-1. Using Composite image and stereo sound

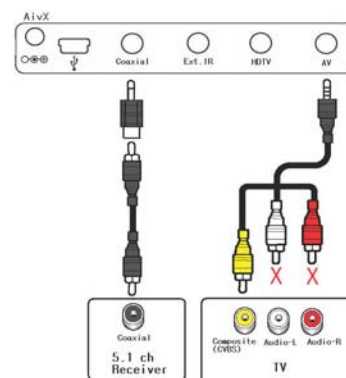
Please connect AV cable as below.



### 9-2. Using composite image and 5.1ch sound.

Connect only image plug (yellow) in AV cable with TV image plug. (Do not connect two voice plugs.)

Connect to 5.1 ch receiver using 5.1ch conversion jack and Coaxial cable.

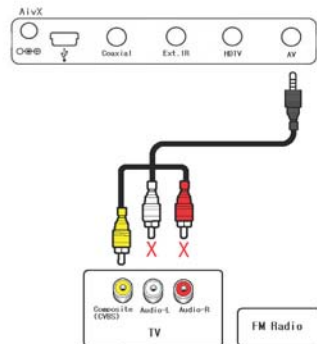


### 9-3. Using composite image and FM stereo sound

Connect only image plug (yellow) in AV cable with TV image plug. (Do not connect two voice plugs.)

AV cable is also used as FM antenna.

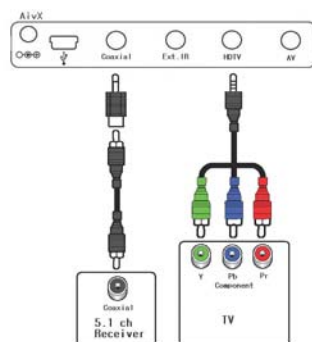
Voice can be received only through FM radio.  
Please prepare a FM radio.



### 9-5. Using component image and 5.1 ch sound

Connect component cable to TV.

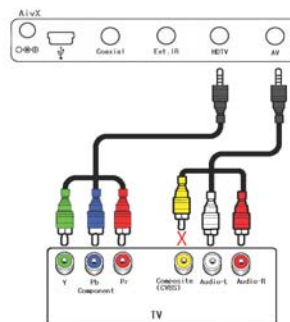
Connect to 5.1ch receiver using 5.1ch conversion jack and Coaxial cable.



### 9-4. Using Component image and stereo sound

Connect component cable to TV.

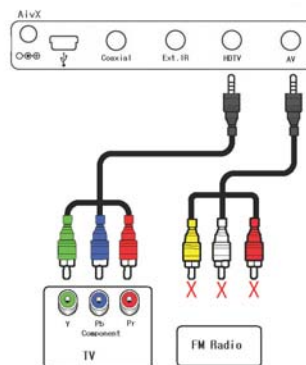
Connect AV cable and stereo voice plugs (white, red) to TV. (Do not connect image plug)



### 9-6. Using component image and FM stereo sound

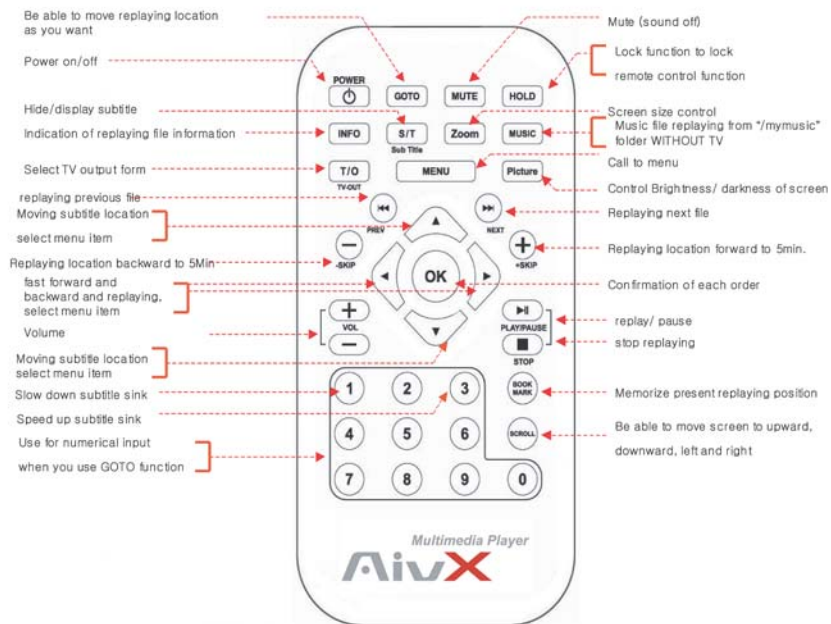
Connect component cable to TV. Connect AV cable, which is also used as FM antenna.

Voice can be received only through FM radio.  
Please prepare a FM radio.





## 10. How to use remote control



## 11. Watching Movie/Music/Photo

### 11-1. Using file revive and menu while playing (Movie/Music/Photo)

#### ■ Go to [File Browser] screen

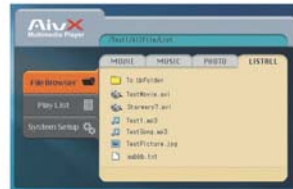
1. Press "MENU" key.
2. Using "▲, ▼" key and move to [File Browser].
3. Press "OK" key to select.

#### ■ Replay File

1. AT [File Browser] screen, using "◀, ▶" key to select a target among [Movie]/[Music]/[Photo]/[all]. You may see selected file, if you select "all" you may see all the files.



2. Select a file using “▲,▼”key.
3. Replay if you press “▶||” or “OK” key (Movie, music, Photo).

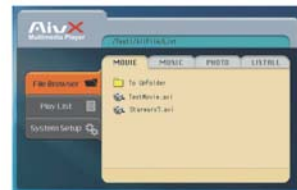


#### ■ Using menu while you replaying

1. Press “MENU”key brings menus that you may change.
2. Press “◀,▶”key and move to the menu that you wish to go.
3. Select appointed item using “▲,▼”key.
4. Press “OK”to appoint item.(Selected item turn color)
5. Input the value using “◀,▶”key.
6. Press “OK”key to apply.(Recover selected item color)
7. Press “MENU”key again and then menu screen go end.

## 11-2. Watching Movie

Please refer to below screen to select movie file.  
Select the file using “▲,▼” key and press to play using, “▶||” or press “OK” key.



#### ■ Menu explanation while playing

- **Replaying information**  
Indicate present playing file information such as playing time and total playing time.
- **Subtitle modification**  
Select subtitle location, size, color, and language.
- **Screen size**  
Be able to maximize or minimize screen.
- **Screen setting**  
Be able to modify brightness, color, and contrast.

#### ■ Convenient key function

- **BOOKMARK**  
This function is to memorize present file location. In case of re-start or go to other menu, you may use this bookmark function.

◆ **Register** : Press "BOOKMARK" Key at the location that you wish to play.

The latest bookmark is memorable.

◆ **Replay** : Press "bookmark" key when file is not replaying.

Replaying movies that registered earlier.

• **ZOOM**

Each press shows letterbox, Pan& scan, and normal screen.

Letterbox is not using vertical side of screen to show full screen on TV.

Pan& Scan is to cut horizontal line of screen to show full vertical side.

• **SCROLL**

Scroll key is to move full screen.

Press "SCROLL" key and using "◀, ▶, ▲, ▼" key, and then you may move screen location.

• **+Skip, -Skip**

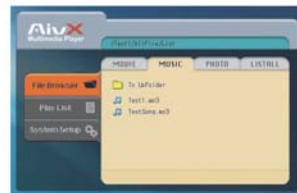
Move function is 5 min. forward or 5 min. backward to replaying image.

## 11-3. Listening Music

Please refer to below screen to select music file.

Select the file using "▲, ▼" key and press to play using,

"▶||" or press "OK" key.



■ **Menu explanation while playing**

Replaying information:

Indicate present playing file information such as playing time and total playing time.

■ **Replaying music without TV image.**

To use in case of replaying music without TV.

Press "MUSIC" key and then all music files will replaying from "/mymusic" of HDD.

## 11-4. Watching Photo

Please refer to below screen to select Photo file.

Select the file using "▲, ▼" key and press to play using,

"▶||" or press "OK" key.



#### ■ Menu explanation while playing

##### Replaying information:

Indicate present playing file information such as playing time and total playing time.

- |  |  |
|--|--|
| • Screen size<br>Be able to maximize or minimize screen.               | • Slide<br>Be able to set sliding time by 1,3,5,7,9 sec. |
| • Screen setting<br>Be able to modify brightness, color, and contrast. | • Screen rotating<br>Screen rotating 90,180, degree.     |

### 11-5. How to use Play List (Only movie file is possible)

#### ■ Go to [Play List] screen

1. Press "MENU" key.
2. Move to [Play List] using "▲,▼" key.
3. Select using press "OK"key.

#### ■ Replaying

1. Select [replaying/order] from [Play List]screen using "◀,▶" key.
2. Select and press movie file using "▲,▼" key.
3. To replay, press "▶||" or "OK"key.

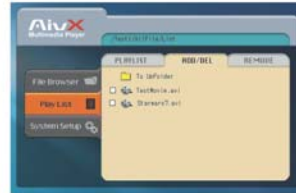


#### ■ Changing replaying order

1. At[Play List] screen, select [replaying/order] using "◀,▶"key.
2. Select movie file to replay using "▲,▼" key.
3. Select file to move using "OK"key (Left side icon is activated ).
4. Select location to move using "▲,▼" key (Selected file moved simultaneously).
5. Press "OK"key then present location is applied(Recover Icon).

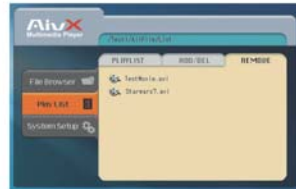
#### ■ Setup/cancel

1. Select [Add/Del] from [play list] using "◀,▶" key.
2. Select additional file to add on Play List using "▲,▼" key.
3. Press "OK" key to add on to Play List (check mark). And Press "ok" again and then Play List will be deleted.



#### ■ Delete

1. Select [Remove] from [Play List] using "◀,▶" key.
2. Select delete file from Play List using "▲,▼" key.
3. To execute press "OK" key.



## 12. System setup

### 12-1. How to set up the list

1. Press "MENU" key.
2. Move to [system setup] menu using "▲,▼" key.
3. Press "OK" key to select [system setup]
4. Press "◀,▶" key to select a menu among [video]/[audio]/[subtitle]/[system].
5. Press "▲,▼" key to select detailed setup list..
6. Press "OK" key to check or not check upon clicking.

### 12-2. Video Setup

#### ■ HDTV(component), TV Form

This category is to select what kind of TV.



#### ■ Screen setup

Select various screen type like letterbox or Pan & Scan.



**Caution :** If this setup is not completed, you may not see correct image.  
In this case, press "T/O(TV OUT)"key a couple of times until fine image comes out.  
If you change to automatic, then TV form would be automatically set.

### 12-3. Audio setup

#### ■ Audio output

You may select either analog 2ch (stereo) or digital 5.1ch.

#### ■ FM transmission

Set up to listen sound through FM radio.

If you use FM transmission, you should choose one channel out of four as above



### 12-4. Subtitle setup

#### ■ Subtitle setup

Be able to select hide or display subtitle.

#### ■ Subtitle language

Select one subtitle as you wish.



### 12-5. System setup

#### ■ Initialization

System initialization function used as initializing a factory output.

#### ■ Language

Select language to use.



#### ■ Firmware upgrade

Using for firmware upgrade.

"A new firmware version" indicate version "/update/update.bin" of HDD.

"Present firmware version" is a present version using the AivX system now.

#### ■ How to upgrade firmware.

1. Connect AivX to PC.
2. Create a folder "/update" from AivX HDD.
3. Download update.bin file from AivX homepage and save to "/update" folder.
4. Detach AivX from PC.
5. Connect AivX to TV and turn on the power.
6. Press "MENU" key.
7. Move to [system setup] menu using "▲, ▼" key.
8. Press "OK" key to select [system setup].
9. Press "◀, ▶" key to select [system].
10. Press "▲, ▼" key to move to "start" item of firmware upgrade.
11. Press "OK" key then you will have reconfirm message.
12. Press "▲, ▼" and move to "yes", and press "OK" then start firmware upgrade will be processed.

If you want to firmware upgrade cancel then in "No" location press "OK" key.

(Please upgrade if you find a higher firmware version compare to your version.)

## Specifications

Support File format	Movie	DivX3.x/4.x/5.x, Xvid, AVI, VOB, MPG etc.
	Music	MP3,WMA,OGG
	Photo	JPEG
Main chipset	EM8511(Sigma design co.)	
Video output	Composite,HD Component (support progressive output)	
Audio output	2Ch Stereo Digital 5.1Ch Coaxial(DTS pass through) FM Transmitter	
File system	FAT32, NTFS	
HDD	2.5" HDD	
Interface	USB 2.0	
Transmission speed	Max. 480Mbps	
Support OS	Windows98/98SE/ME/2000/XP Over Mac OS 9.0 Over Linux 2.4	
Weight	115g(exclude HDD)	
Size	127(D) * 76(W) * 20(H)mm	
Exterior quality	All Aluminum	

Attention: Product size subject to change upon size of HDD.

VER : M-DVP254-10-041108



## **FCC Information**

This device complies with Part 15 of the FCC Rules. Operation is subject to the following two conditions:

- (1) This Device may not cause harmful interface, and
- (2) This device must accept any interference received, including interference that may cause undesired operation.

Note: This equipment has been tested and found to comply with the limits for CLASS B digital device, pursuant to Part 15 of FCC Rules. These limits are designed to provide reasonable protection against harmful interference when the equipment is operated in a commercial environment. This equipment generates, uses and can radiate radio frequency energy and, if not installed and used in accordance with the instructions, may cause harmful interference to radio communications. However, there is no guarantee that interference will not occur in a particular installation. If this equipment does cause harmful interference to radio or television reception, which can be determined by turning the equipment off and on, the user is encouraged to try correct the interference by one or more of the following measures:

- 1.1. Reorient or relocate the receiving antenna.
- 1.2. Increase the separation between the equipment and receiver.
- 1.3. Connect the equipment into an outlet on a circuit different from that to which receiver is connected.
- 1.4. Consult the dealer or experienced radio/TV technician for help.

## **WARNING**

Changes or modifications not expressly approved by the manufacturer could void the user's authority to operate the equipment.