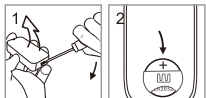


Installing the battery to the remote control



When installing the battery to the remote control, make sure the positive side faces upward.

⚠ CAUTION

1. Risk of explosion if the battery is replaced by an incorrect type;
2. Disposal of a battery into fire or a hot oven, or mechanically crushing or cutting of a battery, that can result in an explosion;
3. Leaving a battery in an extremely high temperature surrounding environment that can result in an explosion or the leakage of flammable liquid or gas;
4. A battery subjected to extremely low air pressure that may result in an explosion or the leakage of flammable liquid or gas.
5. Do not ingest battery, Chemical Burn Hazard.
6. This product contains a coin / button cell battery. If the coin / button cell battery is swallowed, it can cause severe internal burns in just 2 hours and can lead to death.
7. Keep new and used batteries away from children. If the battery compartment does not close securely, stop using the product and keep it away from children. If you think batteries might have been swallowed or placed inside any part of the body, seek immediate medical attention.



NOTICE:

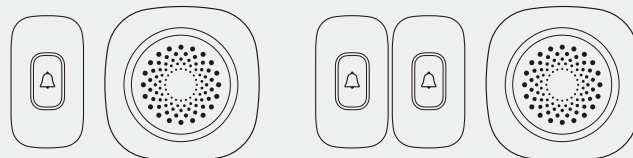
This manual is for the purpose of product use and operation. Design and specifications are subject to change without notice.

Version 1.0



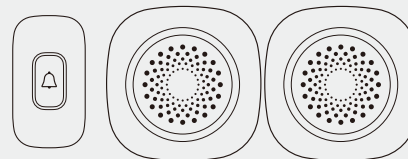
Wireless Remote Control Doorbell

USER MANUAL



MODEL: RL-3995

MODEL: RL-3995B

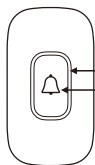


MODEL: RL-2R3995

- 60 ringtones.
- 5 levels for volume adjustment.
- Color changing LED indicator.
- Adopt learning code technology to effectively avoid interference.

FUNCTION KEYS

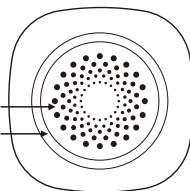
A. Remote Control



Indicator
Push button

Speaker
Color changing
LED indicator

B. Receiver



Previous/
Mode Selection
Next/Pair
Volume Adjustment
/Clear Code

INSTRUCTIONS

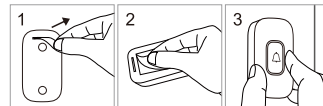
- **Mode Selection:** Long press the (Δ) on the side of the receiver for 3 seconds to switch the modes between Ringtone Only and Ringtone with Light Flashing.
- **Ringtone Selection:** Press the (Δ) or (∇) on the side of the receiver to select the previous or next ringtone. There are 60 ringtones in total for selection.
- **Volume Adjustment:** Press " |||| " on the side of the receiver to adjust the volume. Five volume levels can be selected, i.e., Mute (with flashing light) /Low/Medium/High/Max.
- **Pairing:** Long press (∇) on the side of the receiver for over 3 seconds, it will sound "Ding-Dong" to indicate that it has entered into the pairing state. Now, press the Push button on the remote control, when the receiver sounds the ringtone selected, the pairing is successful (Follow the instruction to pair one remote control to the receiver. To pair more, repeat the instruction. Max 20 remote controls can be paired to one receiver).
- **Clearing Code:** Long press " |||| " on the side of the receiver for over 5 seconds, it will sound "Ding-Dong, Ding-Dong" to indicate that clearing code is successful (This action will clear the code for all remote controls).
- **Power Indicator:** If the receiver is power on for the first time, it will sound "Ding-Dong" to indicate that connecting to power supply works well.
- **Indicator Light:** When the receiver plays a ringtone, the LED light on its front will change the color automatically. When pressing the Push button on the remote control, the indicator light on the remote control will be on.
- **Low Battery Indicator:** When the battery voltage of the receiver is less than 3.3V, the LED light will stay on. In this situation, the user should replace batteries asap.

PACKAGE CONTENTS

RL-3995: Receiver $\times 1$, Remote Control $\times 1$, Screw Pack $\times 1$, Battery (CR2032) $\times 1$
RL-3995B: Receiver $\times 1$, Remote Control $\times 2$, Screw Pack $\times 1$, Battery (CR2032) $\times 2$
RL-2R3995: Receiver $\times 2$, Remote Control $\times 1$, Screw Pack $\times 1$, Battery (CR2032) $\times 1$

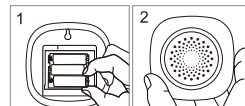
PREPARATION BEFORE USE

A. Remote Control



1. Pull the insulator from the battery.
2. Paste the 3M sticker onto the back of the remote control.
3. Attach the remote control onto a wall or a door.

B. Receiver



1. Open the battery compartment, insert three AA batteries and then place the cover back to the battery compartment.
2. Drill a hole on wall, insert the screw into the hole and then hang the unit onto the screw.

TECHNICAL SPECIFICATIONS

Remote Control

Battery: DC3.0V (CR2032*1)
Standby Current: $\leq 2\mu\text{A}$
Working Current: $\leq 25\text{mA}$
Transmitting Time: 2.2s/transmission
Transmitting Power: $< 100\text{mW}$
Frequency: 433.92MHz $\pm 250\text{KHz}$
Working Temperature: $-15^{\circ}\text{C} \sim 50^{\circ}\text{C}$
Use Environment: Indoor or Outdoor
IP Rating: IPX5

Receiver

Battery: DC4.5V(1.5V/AA/LR6*3)
Standby Current: Max. $\leq 4\text{mA}$
Average $\leq 0.2\text{mA}$
Working Current: Max. $< 150\text{mA}$
Average $< 100\text{mA}$
Volume (30cm) $\left\{ \begin{array}{l} \text{Low: } 68\text{-}74\text{dB} \\ \text{Medium: } 74\text{-}80\text{dB} \\ \text{High: } 80\text{-}86\text{dB} \\ \text{Max: } 86\text{-}92\text{dB} \end{array} \right.$
Demodulation: OOK
Frequency: 433.92MHz $\pm 250\text{KHz}$
Distance: 150~300m (Open Area)
Working Temperature: $-10^{\circ}\text{C} \sim 50^{\circ}\text{C}$
Use Environment: Indoor

This equipment has been tested and found to comply with the limits for a Class B digital device, pursuant to Part 15 of the FCC Rules. These limits are designed to provide reasonable protection against harmful interference in a residential installation. This equipment generates uses and can radiate radio frequency energy and, if not installed and used in accordance with the instructions, may cause harmful interference to radio communications. However, there is no guarantee that interference will not occur in a particular installation. If this equipment does cause harmful interference to radio or television reception, which can be determined by turning the equipment off and on, the user is encouraged to try to correct the interference by one or more of the following measures:

- Reorient or relocate the receiving antenna.
- Increase the separation between the equipment and receiver.
- Connect the equipment into an outlet on a circuit different from that to which the receiver is connected.
- Consult the dealer or an experienced radio/TV technician for help.

This device complies with part 15 of the FCC Rules. Operation is subject to the following two conditions:

(1) This device may not cause harmful interference, and (2) this device must accept any interference received, including interference that may cause undesired operation.

Changes or modifications not expressly approved by the party responsible for compliance could void the user's authority to operate the equipment