

WINNERCOM

WINNERCOM



WINNERCOM

CN7 PE NFC Touch Door Handle User Manual

V 1.0



Winnercom Co., Ltd.

Contents

WINNERCOM

1. Introduction

2. NFC Door Handle Design(BOM) & Application

3. Attentions

4. Specifications

5. User Information and Instructions

1. Introduction

WINNERCOM

- Door handle Module (DHS)
- NFC & Capacitive Touch
- Pocket Light LED
- Hi-Speed CAN

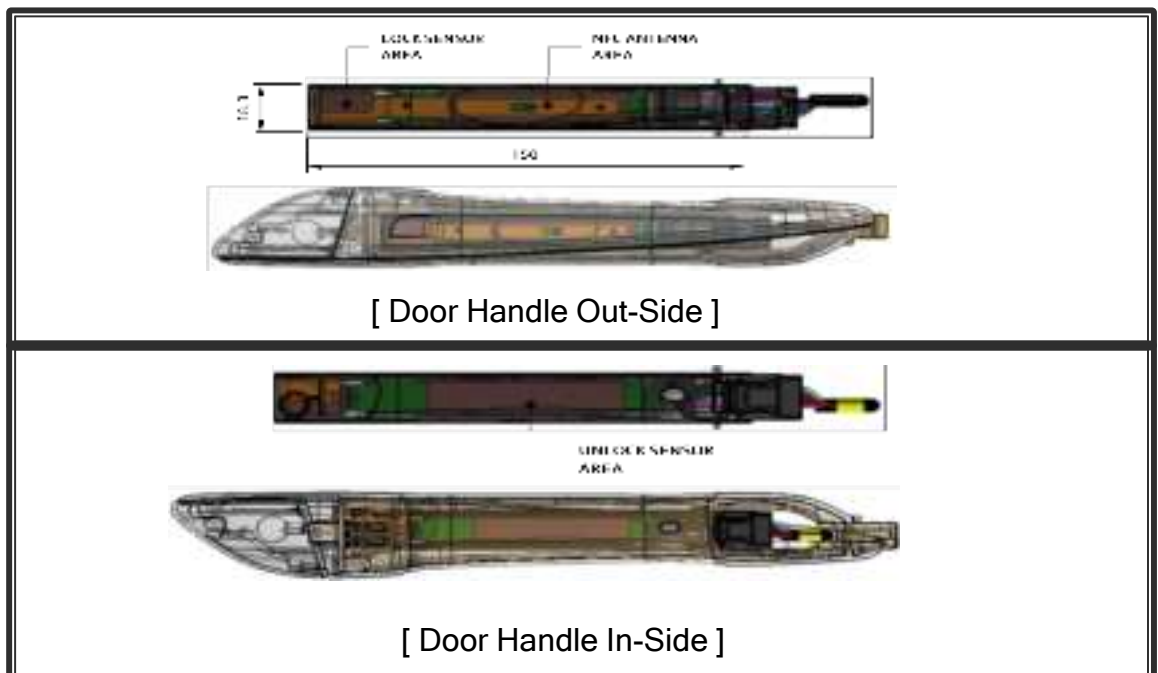


The door handle module for Automotive has a NFC Reader and lock/Unlock 2Channel Capacitive touch Sensor function.

This module is installed inside of the door handle covers and will be attached to the outside door panel.

This module is communicated with CAN network which enables to connect to the car network to send the signal of lock and unlock of door and Pocket light LED On/Off control.

It receives DC power from car battery at all time.



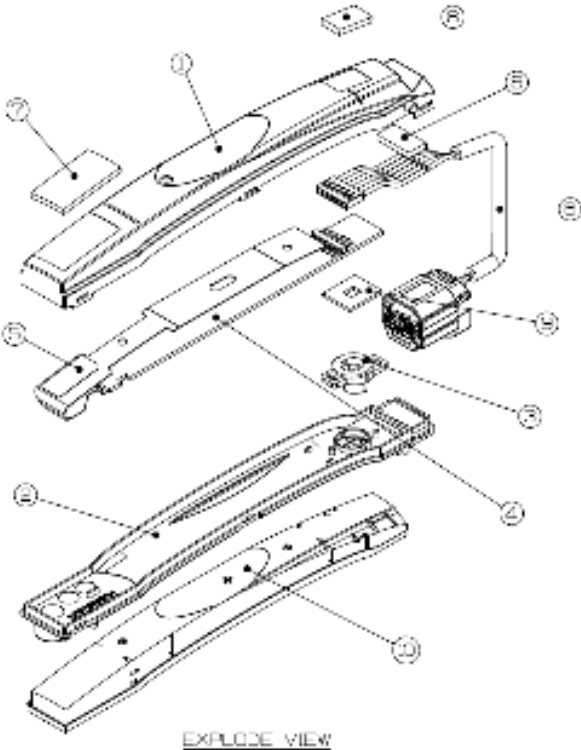
[Assembled cover and DHS]

2. NFC DHS Design(BOM) & Application

WINNERCOM

CE - NFC Touch Door Handle

ITEMS	SPECIFICATION
Size	150 x 18.3 x 22(h) [mm] (Length x Width x Height)
Color	Black
Weight	60g
Waterproof	Polyurethane full potting inside of module. Protective of humidity ,vibration, waterproof.
Material	Case : PA6+GF15% , ABS / PRESS : SPTE(Tin-Plating) / PCB : FR-4, 4Layer / Foam Tape : EPDM/ FPCB : Polyimide film



ITEM	ITEM NAME	ITEM CODE	ITEM QTY	ITEM UNIT	ITEM REMARK
1	MAIN BODY	150-18.3-22(h)	1	PCS	MAIN BODY
2	NFC MODULE	150-18.3-22(h)	1	PCS	NFC MODULE
3	INTERNAL PCB	150-18.3-22(h)	1	PCS	INTERNAL PCB
4	INTERNAL FPCB	150-18.3-22(h)	1	PCS	INTERNAL FPCB
5	INTERNAL POLYIMIDE FILM	150-18.3-22(h)	1	PCS	INTERNAL POLYIMIDE FILM
6	INTERNAL EPDM FOAM TAPE	150-18.3-22(h)	1	PCS	INTERNAL EPDM FOAM TAPE
7	INTERNAL PA6+GF15% CASE	150-18.3-22(h)	1	PCS	INTERNAL PA6+GF15% CASE
8	INTERNAL ABS CASE	150-18.3-22(h)	1	PCS	INTERNAL ABS CASE
9	INTERNAL SPTE CASE	150-18.3-22(h)	1	PCS	INTERNAL SPTE CASE
10	INTERNAL FR-4 CASE	150-18.3-22(h)	1	PCS	INTERNAL FR-4 CASE
11	INTERNAL 4Layer CASE	150-18.3-22(h)	1	PCS	INTERNAL 4Layer CASE
12	INTERNAL 2Layer CASE	150-18.3-22(h)	1	PCS	INTERNAL 2Layer CASE
13	INTERNAL 1Layer CASE	150-18.3-22(h)	1	PCS	INTERNAL 1Layer CASE
14	INTERNAL 0.5Layer CASE	150-18.3-22(h)	1	PCS	INTERNAL 0.5Layer CASE
15	INTERNAL 0.25Layer CASE	150-18.3-22(h)	1	PCS	INTERNAL 0.25Layer CASE
16	INTERNAL 0.125Layer CASE	150-18.3-22(h)	1	PCS	INTERNAL 0.125Layer CASE
17	INTERNAL 0.0625Layer CASE	150-18.3-22(h)	1	PCS	INTERNAL 0.0625Layer CASE
18	INTERNAL 0.03125Layer CASE	150-18.3-22(h)	1	PCS	INTERNAL 0.03125Layer CASE
19	INTERNAL 0.015625Layer CASE	150-18.3-22(h)	1	PCS	INTERNAL 0.015625Layer CASE
20	INTERNAL 0.0078125Layer CASE	150-18.3-22(h)	1	PCS	INTERNAL 0.0078125Layer CASE
21	INTERNAL 0.00390625Layer CASE	150-18.3-22(h)	1	PCS	INTERNAL 0.00390625Layer CASE
22	INTERNAL 0.001953125Layer CASE	150-18.3-22(h)	1	PCS	INTERNAL 0.001953125Layer CASE
23	INTERNAL 0.0009765625Layer CASE	150-18.3-22(h)	1	PCS	INTERNAL 0.0009765625Layer CASE
24	INTERNAL 0.00048828125Layer CASE	150-18.3-22(h)	1	PCS	INTERNAL 0.00048828125Layer CASE
25	INTERNAL 0.000244140625Layer CASE	150-18.3-22(h)	1	PCS	INTERNAL 0.000244140625Layer CASE
26	INTERNAL 0.0001220703125Layer CASE	150-18.3-22(h)	1	PCS	INTERNAL 0.0001220703125Layer CASE
27	INTERNAL 0.00006103515625Layer CASE	150-18.3-22(h)	1	PCS	INTERNAL 0.00006103515625Layer CASE
28	INTERNAL 0.000030517578125Layer CASE	150-18.3-22(h)	1	PCS	INTERNAL 0.000030517578125Layer CASE
29	INTERNAL 0.0000152587890625Layer CASE	150-18.3-22(h)	1	PCS	INTERNAL 0.0000152587890625Layer CASE
30	INTERNAL 0.00000762939453125Layer CASE	150-18.3-22(h)	1	PCS	INTERNAL 0.00000762939453125Layer CASE
31	INTERNAL 0.000003814697265625Layer CASE	150-18.3-22(h)	1	PCS	INTERNAL 0.000003814697265625Layer CASE
32	INTERNAL 0.0000019073486328125Layer CASE	150-18.3-22(h)	1	PCS	INTERNAL 0.0000019073486328125Layer CASE
33	INTERNAL 0.00000095367431640625Layer CASE	150-18.3-22(h)	1	PCS	INTERNAL 0.00000095367431640625Layer CASE
34	INTERNAL 0.000000476837158203125Layer CASE	150-18.3-22(h)	1	PCS	INTERNAL 0.000000476837158203125Layer CASE
35	INTERNAL 0.0000002384185791015625Layer CASE	150-18.3-22(h)	1	PCS	INTERNAL 0.0000002384185791015625Layer CASE
36	INTERNAL 0.00000011920928955078125Layer CASE	150-18.3-22(h)	1	PCS	INTERNAL 0.00000011920928955078125Layer CASE
37	INTERNAL 0.000000059604644775390625Layer CASE	150-18.3-22(h)	1	PCS	INTERNAL 0.000000059604644775390625Layer CASE
38	INTERNAL 0.0000000298023223876953125Layer CASE	150-18.3-22(h)	1	PCS	INTERNAL 0.0000000298023223876953125Layer CASE
39	INTERNAL 0.00000001490116119384765625Layer CASE	150-18.3-22(h)	1	PCS	INTERNAL 0.00000001490116119384765625Layer CASE
40	INTERNAL 0.000000007450580596923828125Layer CASE	150-18.3-22(h)	1	PCS	INTERNAL 0.000000007450580596923828125Layer CASE
41	INTERNAL 0.0000000037252902984619140625Layer CASE	150-18.3-22(h)	1	PCS	INTERNAL 0.0000000037252902984619140625Layer CASE
42	INTERNAL 0.00000000186264514923095703125Layer CASE	150-18.3-22(h)	1	PCS	INTERNAL 0.00000000186264514923095703125Layer CASE
43	INTERNAL 0.000000000931322574615478515625Layer CASE	150-18.3-22(h)	1	PCS	INTERNAL 0.000000000931322574615478515625Layer CASE
44	INTERNAL 0.0000000004656612873077392578125Layer CASE	150-18.3-22(h)	1	PCS	INTERNAL 0.0000000004656612873077392578125Layer CASE
45	INTERNAL 0.00000000023283064365386962890625Layer CASE	150-18.3-22(h)	1	PCS	INTERNAL 0.00000000023283064365386962890625Layer CASE
46	INTERNAL 0.000000000116415321826934814453125Layer CASE	150-18.3-22(h)	1	PCS	INTERNAL 0.000000000116415321826934814453125Layer CASE
47	INTERNAL 0.0000000000582076609134674072265625Layer CASE	150-18.3-22(h)	1	PCS	INTERNAL 0.0000000000582076609134674072265625Layer CASE
48	INTERNAL 0.00000000002910383045673370361328125Layer CASE	150-18.3-22(h)	1	PCS	INTERNAL 0.00000000002910383045673370361328125Layer CASE
49	INTERNAL 0.000000000014551915228366851806640625Layer CASE	150-18.3-22(h)	1	PCS	INTERNAL 0.000000000014551915228366851806640625Layer CASE
50	INTERNAL 0.0000000000072759576141834259033203125Layer CASE	150-18.3-22(h)	1	PCS	INTERNAL 0.0000000000072759576141834259033203125Layer CASE

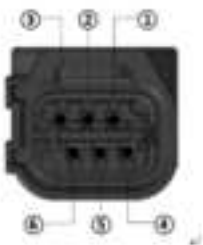
EXPLODE VIEW

3. Attentions

WINNERCOM

- Please always mount the Door handle Module before power on the device to avoid circuit damage
- Before power on the Module, check the power supply(Fig. 1)
- Module Input Power connect to the connector(Fig. 1)

- **Type:** 6pin Connector Sealed
- **Maker & Part No.:** 경신, HKC06-12721 6P Female



Pin #	Name	Description	In/Out	Wire Color	I/O Level
1	V Bat(+Vcc)	Power Supply	Power	RED	Battery +
2	L_CAN(L)	CAN Low Signal	I/O	GREEN	2.5±TBD V
3	TOUCH_1	LOCK	O	GRAY	
4	TOUCH_2	UNLOCK	O	PINK	
5	L_CAN(H)	CAN High Signal	I/O	BLUE	2.5±TBD V
6	GND	Electric Ground	Power	BLACK	Gnd

CAN (HI), CAN (LO) communication lines shall be applied as twisted wires between the connector and the door handle module. The twist is applied once per inch (360 degrees).

Fig. 1 Connector

WINNERCOM

Frequency Range	13.56MHz for NFC
Operating Voltage	9.0 ~ 16.0 [Vdc], Typical 12.0 [Vdc]
Current	Max 400mA @ Operation Mode
Operating Temp.	-30°C ~ 75°C
Storage Temp.	-40°C ~ 85°C



5. User Information and Instructions

WINNERCOM

FCC Compliance Statement

This device complies with part 15 of the FCC rules. Operation is subject to the following two conditions: (1) This device may not cause harmful interference, and (2) this device must accept any interference received, including interference that may cause undesired operation.

FCC Caution

Any changes or modifications not expressly approved by the party responsible for compliance could void the user's authority to operate this equipment. This transmitter must not be co-located or operating in conjunction with any other antenna or transmitter.

Industry Canada Statement

This device complies with RSS-210 of the Industry Canada Rules. Operation is subject to the following two conditions: (1) This device may not cause harmful interference, and (2) this device must accept any interference received, including interference that may cause undesired operation. Ce dispositif est conforme à la norme CNR-210 d'Industrie Canada applicable aux appareils radio exempts de licence. Son fonctionnement est sujet aux deux conditions suivantes: (1) le dispositif ne doit pas produire de brouillage préjudiciable, et (2) ce dispositif doit accepter tout brouillage reçu, y compris un brouillage susceptible de provoquer un fonctionnement indésirable.

Manufacturer information

Manufacturer name	WINNERCOM Co., Ltd.
Address, City:	158-7, Golden root-ro, Juchon-myeon, Gimhae-si, Gyeongsangnam-do, KOREA
Product name (type) :	Touch door