

Figure 1 displays three orthographic views of a handheld device, likely a remote control or a small electronic device, with a legend identifying its components.

**Views:**

- Front View:** Shows the top and front of the device.
- Left View:** Shows the left side of the device.
- Right View:** Shows the right side of the device.

**Legend:**

- Battery Cover Release Latch
- Battery Compartment
- Trigger
- Shoots Button/Indicator
- Trigger
- Shoots Button/Indicator
- Trigger/Release (single press only)
- Release Button
- Release Button

**Install RFD500 Software on Mobile Computer**  
In order to use the RFD500 on a mobile computer, software installation is required. Download the software file from the Zebra Support Central web site: [www.zebra.com/support](http://www.zebra.com/support). Follow the instructions provided with the software and install the file onto the device using ActiveSync. For more information, refer to the appropriate mobile computer User Guide at: [www.zebra.com/support](http://www.zebra.com/support).

1. Insert the battery, connector end first, into the battery compartment.
2. Press down on the battery until the battery latch snaps into place.



### Remove the Battery

1. Remove the battery cover.
2. Remove battery as shown.



### Inserting the Mobile Computer into the RFD8500



### Removing the Mobile Computer from the RFD6500

To remove the mobile computer, press the battery cover release latches, and pull the mobile computer back and up.

### Removing the Mobile Computer from the RFD6500

To remove the mobile computer, press the battery cover release latches, and pull the mobile computer back and up.

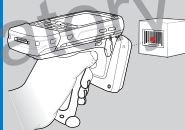
### Scanning

To scan bar codes:

1. Set the SFC0000 to bar code mode.
2. Aim the device at the bar code.
3. Press the trigger on the handle. T indicate a successful decode.

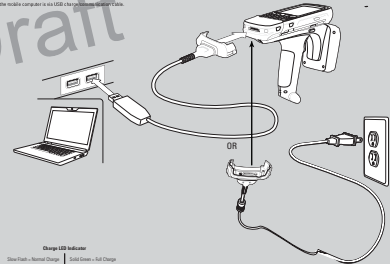
1. Set the HFC0000 to bar code mode.
2. Aim the device at the bar code.
2. Press the trigger on the handle. The green LED will indicate a successful decode.

2. Press the trigger on the handle. The scan/decode LED lights, and a beep sounds to indicate a successful decode.



### Charging and Communication

The RDC 8500 can be used to charge the battery of a mobile computer, and communicate with a host computer. The resource interface of communication to the mobile computer is via USB charge communication cable.



Charge LED Indicator	
Slow Flash = Normal Charge	Solid Green = Full Charge

**More Information on the RFD8500**  
For the latest version of this guide and related product information, visit the Zebra Web site at: <http://www.zebra.com/support>.

**Service**  
Before you use this unit, it must be configured to operate with your mobile device to run your applications.  
If you have a problem running your equipment, contact your facility's Technical or Systems Support. If there is a problem with this equipment, they will contact Zebra support at <http://www.zebra.com/support>.

**Warranty**  
For the complete Zebra hardware product warranty statement, go to: <http://www.zebra.com/warranty>.



Zebra Technologies Corporation  
Uniontown, IL USA  
Zebra and the Zebra head graphic are registered trademarks of ZTC Corp. The Barcode logo is a registered trademark of Zebra Technologies Inc. © Zebra Technologies Corporation. All rights reserved.

XXXXXXX Beta Draft — May 2013

**RFD8500 Quick Start Guide**

**REMOVING THE BATTERY COVER**

**PAIRING**



- Pairing with an Android Device**  
To pair with an Android device, such as the T202:  
1. Power on the T202.  
2. Touch the Settings icon.  
3. Touch Bluetooth on.  
4. Touch Bluetooth to display the AVAILABLE DEVICES list.  
5. Touch the Bluetooth icon.  
6. Ensure Bluetooth is enabled on the RFD8500. If not, press the Bluetooth icon on the RFD8500 and the Bluetooth icon on the device.  
7. The RFD8500 device displays in the list of AVAILABLE DEVICES.  
8. Touch the RFD8500 device in the list of AVAILABLE DEVICES.  
9. Confirm the pairing code displayed on the RFD8500 device matches the pairing code on the device.  
10. Go to Settings (Applications and Battery) and Bluetooth to verify if it has been paired.  
This connects the RFD8500 to the device.

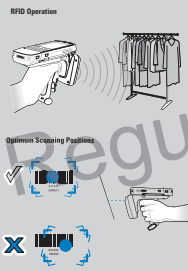
<http://www.zebra.com/W00000>

**ACCESSORIES**

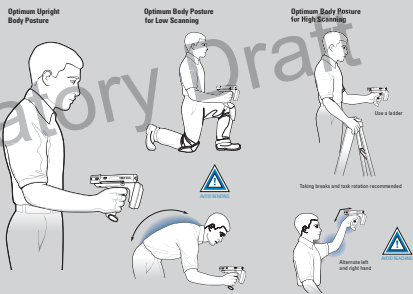


**Note:** The RFD8500 can charge without the mobile computer attached.

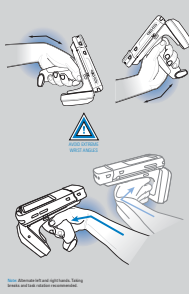
**OPTIMUM RFID TAG DECODING**



**OPTIMUM RFID BODY POSTURE**



**AVOID EXTREME WHIST ANGLES**



# RFD8500 REGULATORY GUIDE



Zebra reserves the right to make changes to any product to improve reliability, function, or design. Zebra does not assume any product liability arising out of, or in connection with, the application or use of any product, circuit, or application described herein. No license is granted, either expressly or by implication, estoppel, or otherwise under any patent right or patent, covering or relating to any combination, system, apparatus, machine, material, method, or process in which Zebra products might be used. An implied license exists only for equipment, circuits, and subsystems contained in Zebra products.

**Warranty**  
For the complete Zebra hardware product warranty statement, go to: <http://www.zebra.com/warranty>.

**For Australia Only**  
This warranty is given by Zebra Technologies Asia Pacific Pte. Ltd., 71 Robinson Road, #05-00/01, Singapore 068898, Singapore. Our goods come with guarantees that cannot be excluded under the Australian Consumer Law. You are entitled to a replacement or refund for a major failure and compensation for any other reasonably foreseeable loss or damage. You are also entitled to have the goods repaired or replaced if the goods fail to be of acceptable quality and the failure does not amount to a major failure. Zebra Technologies Corporation Australia's limited warranty above is in addition to any rights and remedies you may have under the Australian Consumer Law. If you have any queries, please call Zebra Technologies Corporation at +61-8888-0752. You may also visit our website: <http://www.zebra.com> for the most updated warranty terms.



Zebra Technologies Corporation  
Lincolnshire, IL U.S.A.  
<http://www.zebra.com>  
Zebra and the Zebra head graphic are registered trademarks of ZHI Corp. The Symbol logo is a registered trademark of Symbol Technologies, Inc., a Zebra Technologies company.  
© 2015 Symbol Technologies, Inc.



WW0202R2A01 Revision 2 — May 2015

## Regulatory Information

This guide applies to the following Model Numbers: RFD8500. All Zebra devices are designed to be compliant with rules and regulations in locations they are sold and will be labeled as required. Local language translations are available at the following website:

<http://www.zebra.com/support>.

Any changes or modifications to Zebra equipment, not expressly approved by Zebra, could void the user's authority to operate the equipment.

Antennas: Use only the supplied or an approved replacement antenna. Unauthorized antennas, modifications, or attachments could cause damage and may violate regulations.

CAUTION:  
Only use Symbol approved and UL Listed accessories, battery packs and battery chargers.  
Do NOT attempt to charge damp/wet mobile computers or batteries. All components must be dry before connecting to an external power source.  
Declared maximum operating temperature: 40°C.

## Bluetooth® Wireless Technology

This is an approved Bluetooth® product. For more information or to view End Product Listing, please visit:  
<https://www.bluetooth.org/jsp/listings.cfm>.

## Wireless Devices Country Approvals

Regulatory markings, subject to certification, are applied to the device signifying the radio(s) is/are approved for use in the following countries: United States, Canada, Japan, China, S. Korea, Australia, and Europe.  
Please refer to the Declaration of Conformity (DoC) for details of other country markings. This is available at:  
<http://www.zebra.com/doc>

**Note:** Europe includes Austria, Belgium, Bulgaria, Croatia, Czech Republic, Cyprus, Denmark, Estonia, Finland, France, Germany, Greece, Hungary, Iceland, Ireland, Italy, Latvia, Liechtenstein, Lithuania, Luxembourg, Malta, Netherlands, Norway, Poland, Portugal, Romania, Slovak Republic, Slovenia, Spain, Sweden, Switzerland and the United Kingdom.

⚠ Operation of the device without regulatory approval is illegal.

## Health and Safety Recommendations

### Ergonomic Recommendations

CAUTION  
In order to avoid or minimize the potential risk of ergonomic injury follow the recommendations below. Consult with your local Health & Safety Manager to ensure that you are adhering to your company's safety programs to prevent employee injury.

- Reduce or eliminate repetitive motion
- Maintain a neutral posture
- Reduce or eliminate excessive force
- Keep objects that are used frequently within easy reach
- Perform tasks at correct heights
- Reduce or eliminate vibration
- Reduce or eliminate direct pressure
- Provide adjustable workstations
- Provide adequate clearance
- Provide a suitable working environment
- Improve work procedures.

## Warnings for Use of Wireless Devices

⚠ Please observe all warning notices with regard to the usage of wireless devices.

## Safety in Hospitals

Wireless devices transmit radio frequency energy and may affect medical electrical equipment.

Wireless devices should be switched off whenever you are requested to do so in hospitals, clinics or healthcare facilities. These requests are designed to prevent possible interference with sensitive medical equipment.

**Pacemakers**  
Pacemaker manufacturers recommended that a minimum of 15cm (6 inches) be maintained between a hand-held wireless device and a pacemaker to avoid potential interference with the pacemaker. These recommendations are consistent with independent research and recommendations by Wireless Technology Research.

- Persons with Pacemakers:
  - Should ALWAYS keep the device more than 15cm (6 inches) from their pacemaker when turned ON.
  - Should not carry the device in a breast pocket.
  - Should use the ear furthest from the pacemaker to minimize the potential for interference.
  - If you have any reason to suspect that interference is taking place, turn OFF your device.

**Other Medical Devices**  
Please consult your physician or the manufacturer of the medical device, to determine if the operation of your wireless product may interfere with the medical device.

## RF Exposure Guidelines

**Safety Information**  
**Reducing RF Exposure - Use Properly**  
Only operate the device in accordance with the instructions supplied.

**International**  
The device complies with internationally recognized standards covering human exposure to electromagnetic fields from radio devices. For information on "International" human exposure to electromagnetic fields refer to the Zebra Declaration of Conformity (DoC) at <http://www.zebra.com/doc> located under Wireless Communications and Health.

For further information on the safety of RF energy from wireless devices see <https://www.zebra.com/us/en/about-zebra/company-information/corporate-responsibility.html>.

**US and Canada**  
**Co-located statement**  
To comply with FCC RF exposure compliance requirements, this device must be operated in the hand with a minimum separation distance of 23cm or more from a person's body. Other operating configurations should be avoided.

**Hand-held Devices**  
To comply with EU RF exposure requirements, this device must be operated in the hand with a minimum separation distance of 23cm or more from a person's body. Other operating configurations should be avoided.

**LED Devices**  
Radiation Exposure Statement:  
This equipment complies with IC radiation exposure limits set forth for an uncontrolled environment. This equipment should be installed and operated with minimum distance 23cm between the radiator and your body.

**NOTE IMPORTANTE:**  
Déclaration d'exposition aux radiations:  
Cet équipement est conforme aux limites d'exposition aux rayonnements IC établies pour un environnement non contrôlé. Cet équipement doit être installé et utilisé avec un minimum de 23 cm de distance entre la source de rayonnement et votre corps. Pour satisfaire les exigences d'exposition aux radiations, un mobile transmetteur doit être utilisé avec une distance de séparation minimale de 23 cm ou plus d'une personne's body.

## Hand-held Devices

To comply with FCC RF exposure requirements, this device must be operated in the hand with a minimum separation distance of 23 cm or more from a person's body. Other operating configurations should be avoided.

## Industry Canada Statement:

**IMPORTANT NOTE:**  
Radiation Exposure Statement:  
This equipment complies with IC radiation exposure limits set forth for an uncontrolled environment. This equipment should be installed and operated with minimum distance 23cm between the radiator and your body.

**NOTE IMPORTANTE:**  
Déclaration d'exposition aux radiations:  
Cet équipement est conforme aux limites d'exposition aux rayonnements IC établies pour un environnement non contrôlé. Cet équipement doit être installé et utilisé avec un minimum de 23 cm de distance entre la source de rayonnement et votre corps. Pour satisfaire les exigences d'exposition aux radiations, un mobile transmetteur doit être utilisé avec une distance de séparation minimale de 23 cm ou plus d'une personne's body.

## LED Devices

LED Compliance Statement:  
Classified as "EXEMPT RISK GROUP" according to IEC 62471:2006 and EN 62471:2008

Pulse duration: xx ms

## Battery Safety

**Power Supply**  
Use ONLY a Symbol approved UL LISTED ITE (IECEN 80950-1, LPS) power supply with electrical ratings: Output 5Vdc, min 1.2A, with a maximum ambient temperature of at least 50 degrees C. Use of alternative power supply will invalidate any approvals given to this unit and may be dangerous.

## Batteries

**Taiwan - Recycling**  
EPA (Environmental Protection Administration) requires dry battery producing or importing firms in accordance with Article 15 of the Waste Disposal Act are required to indicate the recycling marks on the batteries used in sales, giveaway or promotion. Contact a qualified Taiwanese recycler for proper battery disposal.

**Battery Information**  
CAUTION  
Risk of explosion if battery is replaced by an incorrect type.

Dispose of batteries according to instructions.  
Use only Symbol approved batteries. Accessories which have battery charging capability are approved for use with the following battery models:

Symbol 82-172087-01 (3.7Vdc, 4410 mAh)  
Symbol rechargeable battery packs are designed and constructed to the highest standards within the industry.

However, there are limitations to how long a battery can operate or be stored before needing replacement. Many factors affect the actual life cycle of a battery pack, such as heat, cold, harsh environmental conditions and severe drops. When batteries are stored over six (6) months, some irreversible deterioration in overall battery quality may occur. Store batteries at half of full charge in a dry, cool place, removed from the equipment to prevent loss of capacity, rusting of metallic parts and electrolyte leakage. When storing batteries for one year or longer, the charge level should be verified at least once a year and charged to half of full charge.

Replace the battery when a significant loss of run time is detected. Standard warranty period for all Symbol batteries is 30 days, regardless if the battery was purchased separately or included as part of the mobile computer or bar code scanner. For more information on Symbol batteries, please visit:  
<https://aisupportcentral.motorolasolutions.com/content/enb/docs/MS/Symbolbatteries1.pdf>.

**Battery Safety Guidelines**  
• The area in which the units are charged should be clear of debris and combustible materials or chemicals. Particular care should be taken where the device is charged in a non commercial environment.

- Follow battery usage, storage, and charging guidelines found in the user's guide.
- Improper battery usage may result in a fire, explosion, or other hazard.
- To charge the mobile device battery, the battery and charger temperatures must be between +32 °F and +104 °F (0 °C and +40 °C).
- Do not use incompatible batteries and chargers. Use of an incompatible battery or charger may present a risk of fire, explosion, leakage, or other hazard. If you have any questions about the compatibility of a battery or a charger, contact Symbol support.
- For devices that utilize a USB port as a charging source, the device shall only be connected to products that bear the USB-IF logo or have completed the USB-IF compliance program.
- Do not disassemble or open, crush, bend or deform, puncture, or shred.
- Severe impact from dropping any battery-operated device on a hard surface could cause the battery to overheat.
- Do not short circuit a battery or allow metallic or conductive objects to contact the battery terminals.
- Do not modify or remanufacture, attempt to insert foreign objects into the battery, immerse or expose to water or other liquids, or expose to fire, explosion, or other hazard.
- Do not leave or store the equipment in or near areas that might get very hot, such as in a parked vehicle or near a radiator or other heat source. Do not place battery into a microwave oven or dryer.
- Battery usage by children should be supervised.
- Please follow local regulations to promptly dispose of used rechargeable batteries.
- Do not dispose of batteries in fire.
- Seek medical advice immediately if a battery has been swallowed.
- In the event of a battery leak, do not allow the liquid to come in contact with the skin or eyes. If contact has been made, wash the affected area with large amounts of water and seek medical advice.
- If you suspect damage to your equipment or battery, contact Symbol support to arrange for inspection.

**Label Marking:** The Term "C" before the radio certification only signifies that Industry Canada technical specifications were met.

## Marking and European Economic Area (EEA)

Bluetooth® Wireless Technology for use through the EEA has the following restrictions:  
• Maximum radiated transmit power of 100mW EIRP in the frequency range 2.400 -2.4835 GHz.  
RFID devices for use through the EEA have the following restrictions:  
• Maximum radiated transmit power of 2W ERP in the frequency range 865-887.6MHz.

The use of RFID Devices has varying restrictions for use within the EEA; please refer to the Zebra Declaration of Conformity (DoC) for details at: <http://www.zebra.com/doc>.

**Statement of Compliance**  
Symbol hereby declares that this device is in compliance with the essential requirements and other relevant provisions of Directive 1999/5/EC and 2011/65/EU. A Declaration of Conformity may be obtained from: <http://www.zebra.com/doc>.

## Radio Frequency Interference Requirements-FCC

**Note:** This equipment has been tested and found to comply with the limits for a Class B digital device, pursuant to Part 15 of the FCC rules. These limits are designed to provide reasonable protection against harmful interference in a residential installation. This equipment generates, uses and can radiate radio frequency energy and, if not installed and used in accordance with the instructions, may cause harmful interference to radio communications. However there is no guarantee that interference will not occur in a particular installation. If this equipment does cause harmful interference to radio or television reception, which can be determined by turning the equipment off and on, the user is encouraged to try to correct the interference by one or more of the following measures:

- Reorient or relocate the receiving antenna
- Increase the separation between the equipment and receiver
- Connect the equipment into an outlet on a circuit different from that to which the receiver is connected
- Consult the dealer or an experienced radio/TV technician for help.

## Radio Transmitters (Part 15)

This device complies with Part 15 of the FCC Rules. Operation is subject to the following two conditions: (1) this device may not cause harmful interference, and (2) this device must accept any interference received, including interference that may cause undesired operation.

## Radio Frequency Interference Requirements - Canada

CAN ICES-3 (B)NMB-3(B)

This device is in compliance with the NRC for Industry Canada applicable aux appareils radio exempts de licence. L'exploitation est autorisée aux deux conditions suivantes: (1) l'appareil ne doit pas produire de brouillage, et (2) l'utilisateur de l'appareil doit accepter tout brouillage radioélectrique subi, même si le brouillage est susceptible d'en compromettre le fonctionnement.

Le présent appareil est conforme aux CNR d'Industrie Canada applicables aux appareils radio exempts de licence. L'exploitation est autorisée aux deux conditions suivantes: (1) l'appareil ne doit pas produire de brouillage, et (2) l'utilisateur de l'appareil doit accepter tout brouillage radioélectrique subi, même si le brouillage est susceptible d'en compromettre le fonctionnement.

Label Marking: The Term "C" before the radio certification only signifies that Industry Canada technical specifications were met.

## Marking and European Economic Area (EEA)

Bluetooth® Wireless Technology for use through the EEA has the following restrictions:  
• Maximum radiated transmit power of 100mW EIRP in the frequency range 2.400 -2.4835 GHz.  
RFID devices for use through the EEA have the following restrictions:  
• Maximum radiated transmit power of 2W ERP in the frequency range 865-887.6MHz.

The use of RFID Devices has varying restrictions for use within the EEA; please refer to the Zebra Declaration of Conformity (DoC) for details at: <http://www.zebra.com/doc>.

**Statement of Compliance**  
Symbol hereby declares that this device is in compliance with the essential requirements and other relevant provisions of Directive 1999/5/EC and 2011/65/EU. A Declaration of Conformity may be obtained from: <http://www.zebra.com/doc>.

## Radio Frequency Interference Requirements-FCC

**Note:** This equipment has been tested and found to comply with the limits for a Class B digital device, pursuant to Part 15 of the FCC rules. These limits are designed to provide reasonable protection against harmful interference in a residential installation. This equipment generates, uses and can radiate radio frequency energy and, if not installed and used in accordance with the instructions, may cause harmful interference to radio communications. However there is no guarantee that interference will not occur in a particular installation. If this equipment does cause harmful interference to radio or television reception, which can be determined by turning the equipment off and on, the user is encouraged to try to correct the interference by one or more of the following measures:

Waste Electrical and Electronic Equipment (WEEE)

**English:** For EU Customers: All products at the end of their life must be returned to Zebra for recycling. For information on how to return product, please go to: [www.zebra.com/weee](http://www.zebra.com/weee).

**Français :** Clients de l'Union Européenne : Tous les produits en fin de cycle de vie doivent être retournés à Zebra pour recyclage. Pour de plus amples informations sur le retour de produits, consultez : [www.zebra.com/weee](http://www.zebra.com/weee).

**Español:** Para clientes en la Unión Europea: todos los productos deberán entregarse a Zebra al final de su ciclo de vida para que sean reciclados. Si desea más información sobre cómo devolver un producto, visite: [www.zebra.com/weee](http://www.zebra.com/weee).

**Deutsch:** Für Kunden innerhalb der EU: Alle Produkte müssen am Ende ihrer Lebensdauer zum Recycling an Zebra zurückgesandt werden. Informationen zur Rücksendung von Produkten finden Sie unter [www.zebra.com/weee](http://www.zebra.com/weee).

**Italiano:** per i clienti dell'UE: tutti i prodotti che sono giunti al termine del rispettivo ciclo di vita devono essere restituiti a Zebra al fine di consentire il riciclaggio. Per informazioni sulle modalità di restituzione, visitare il seguente sito Web: [www.zebra.com/weee](http://www.zebra.com/weee).

**Português:** Para clientes da UE: todos os produtos no fim de vida devem ser devolvidos à Zebra para reciclagem. Para obter informações sobre como devolver o produto, visite: [www.zebra.com/weee](http://www.zebra.com/weee).

**Nederlands:** Voor klanten in de EU: alle producten dienen aan het einde van hun levensduur naar Zebra te worden teruggezonden voor recycling. Raadpleeg [www.zebra.com/weee](http://www.zebra.com/weee) voor meer informatie over het terugzenden van producten.

**Polski:** Klienci z obszaru Unii Europejskiej: Produkty wycofane z eksploatacji należy zwrócić do firmy Zebra w celu ich udytacji. Informacje na temat zwrotu produktów znajdź się na stronie internetowej [www.zebra.com/weee](http://www.zebra.com/weee).

**Čeština:** Pro zákazníky z EU: Všechny produkty je nutné po skončení jejich životnosti vrátit společnosti Zebra k recyklaci. Informace o způsobu vrácení produktu najdete na webové stránce: [www.zebra.com/weee](http://www.zebra.com/weee).

**Eesti:** EL Klientidele: kõik tooted tuleb nende elutsa lõppedes tagastada taaskasutamise eesmärgil Zebra'le. Lisainformatsiooni saamiseks loote tagastamise kohta külastage pakuti aadressi: [www.zebra.com/weee](http://www.zebra.com/weee).

**Magyar:** Az EU-ban vásárlóknak: Minden funkcionálit termékét a Zebra vállalatához kell eljuttatni újrahasznosítás céljából. A termék visszatartásának módjával kapcsolatos tudnivalókat látogasson el a [www.zebra.com/weee](http://www.zebra.com/weee) weboldala.

**Slovenski:** Za kupce v EU: vsi izdelki se morajo po poteku življenjske dobe vrniti podjetju Zebra za reciklažo. Za informacije o vračilu izdelka obiščite: [www.zebra.com/weee](http://www.zebra.com/weee).

**Svenska:** För kunder inom EU: Alla produkter som uppnått sin livslängd måste returneras till Zebra för återvinning. Information om hur du returnerar produkten finns på [www.zebra.com/weee](http://www.zebra.com/weee).

**Suomi:** Asiakkaid Euroopan unionin alueella: Kaikki tuotteet on palautettava kierrätystarkoituksi Zebra-yhtiölle, kun tuote ei enää käytetä. Lisätietoja tuotteiden palauttamisesta on osoitteessa [www.zebra.com/weee](http://www.zebra.com/weee).

**Dansk:** Til kunder i EU: Alle produkter skal returneres til Zebra til recykling, når de er udfjert. Læs oplysningerne om returnering af produkter på [www.zebra.com/weee](http://www.zebra.com/weee).

**Ελληνικά:** Για πελάτες στην Ε.Ε.: Όλα τα προϊόντα, στο τέλος της διάρκειας ζωής τους, πρέπει να επιστρέφονται στην Zebra για ανακύκλωση. Για περισσότερες πληροφορίες σχετικά με την επιστροφή ενός προϊόντος, επισκεφθείτε τη διεύθυνση [www.zebra.com/weee](http://www.zebra.com/weee) στο διαδίκτυο.

**Malt:** Għal Klienti fl-UE: Il-prodotti kollha li jkun wieslu fl-ahhar tal-fażja ta' l-użu tagħhom, iridu jiġu ritornati għall-Zebra għan-riċiklaġġ. Għal aktar taġirif dwar kif għandek tritorna l-prodott, jekk jogħġbok zur: [www.zebra.com/weee](http://www.zebra.com/weee).

**Slovenščina:** Pre zakažnikov z krajin EU: Vseky výrobky musia byť po uplynutí doby ich životnosti vrátené spoločnosti Zebra na recykláciu. Blížšie informácie o vrátení výrobkov nájdete na: [www.zebra.com/weee](http://www.zebra.com/weee).

**Lietuviai:** ES vartotojams: visi gaminiai, pasibaigus jų eksploatacijos laikui, turi būti grąžinti užsūsti į kompaniją „Zebra“. Daugiau informacijos, kaip grąžinti gaminį, rasite: [www.zebra.com/weee](http://www.zebra.com/weee).

**Latviešu:** ES Klientiem: visi produkti pēc to kalpošanas mēža beigām ir jānogādā atpakaļ Zebra atnauzījai pārstrādei. Lai iegūtu informāciju par produktu nogādāšanu Zebra, lūdzu, skatiet: [www.zebra.com/weee](http://www.zebra.com/weee).

**Türkçe:** AB Müşterileri için: Kullanım süresi dolan tüm ürünler geri dönüştürme için Zebra'ya iade edilmelidir. Ürünlerin nasıl iade edileceğini hakkında bilgi için lütfen şu adresi ziyaret edin: [www.zebra.com/weee](http://www.zebra.com/weee).

Turkish WEEE Statement of Compliance

EEE Yönetmeliğine Uygundur

China RoHS

This table was created to comply with China RoHS requirements.??Space holder for chart

部件名称 Part Name	有害物质 Hazardous Substances					
	铅 Pb	汞 Hg	六价铬 Cr(VI)	多溴联苯 PBBs	多溴二苯醚 PBDEs	
金属部件 Metal Parts	○	○	○	○	○	○
电解液 Electrolyte	○	○	○	○	○	○
电解液和电解液管 Electrolyte and Electrolyte Tube	○	○	○	○	○	○
塑料和塑料管 Plastic and Plastic Tube	○	○	○	○	○	○
塑料和塑料管管 Plastic and Plastic Tube	○	○	○	○	○	○
塑料和塑料管管 Plastic and Plastic Tube	○	○	○	○	○	○
塑料和塑料管管 Plastic and Plastic Tube	○	○	○	○	○	○

本表格根据EU T 11304 的规定编制。

0: 表示该有害物质在该部件所有均质材料中的含量均在 EU T 20572 规定的限量要求以下。

1: 表示该有害物质至少在该部件的某一均质材料中的含量超过EU T 20572 规定的限量要求。(注:如有在此处, 核算员和测试员对上表中打“×”的技术参数进行进一步测试。)

Service Information

If you have a problem using the equipment, contact your facility's Technical or Systems Support. If there is a problem with the equipment, they will contact the Global Support Center at: <http://www.zebra.com/support>.

For the latest version of this guide go to: <http://www.zebra.com/support>.