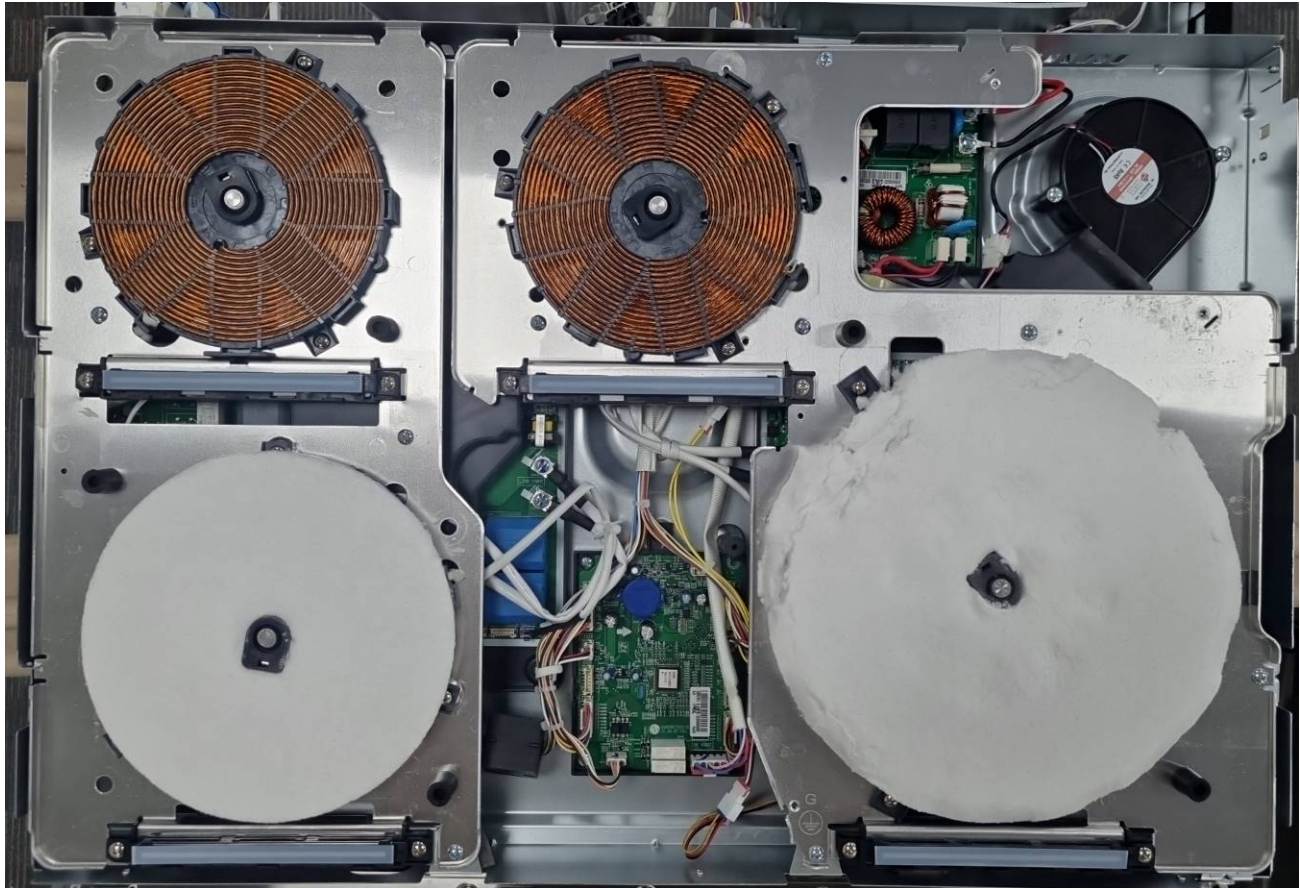
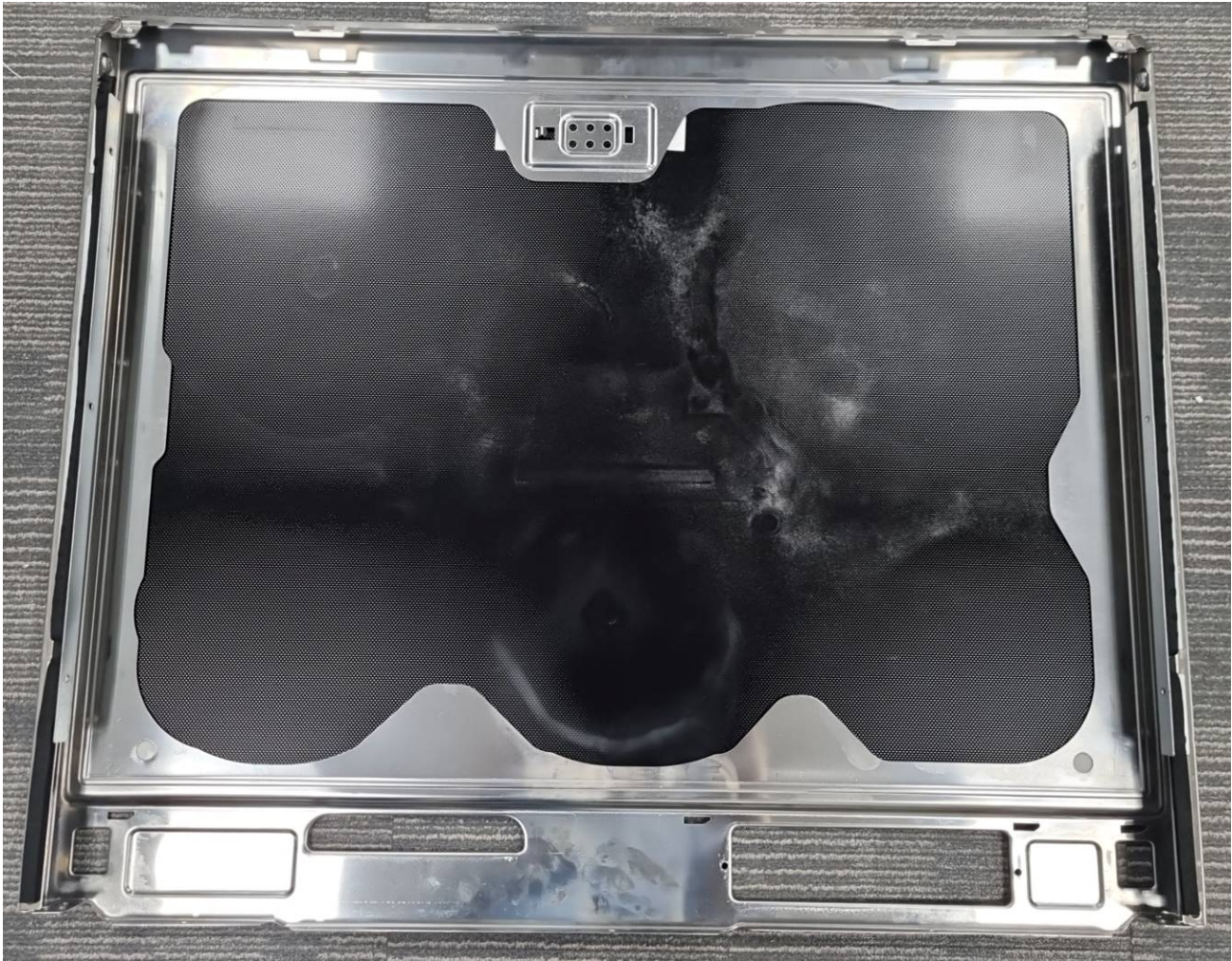
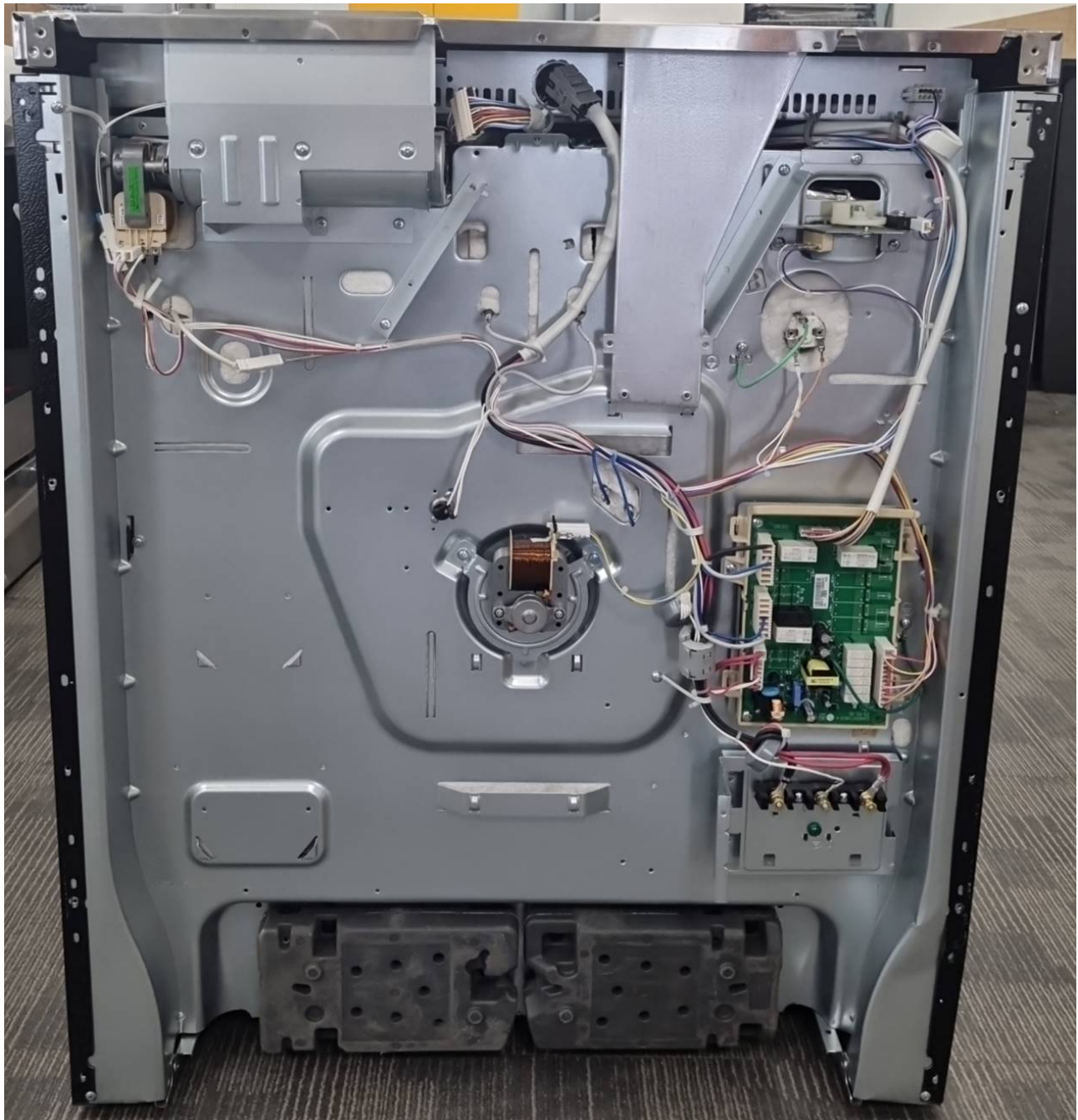
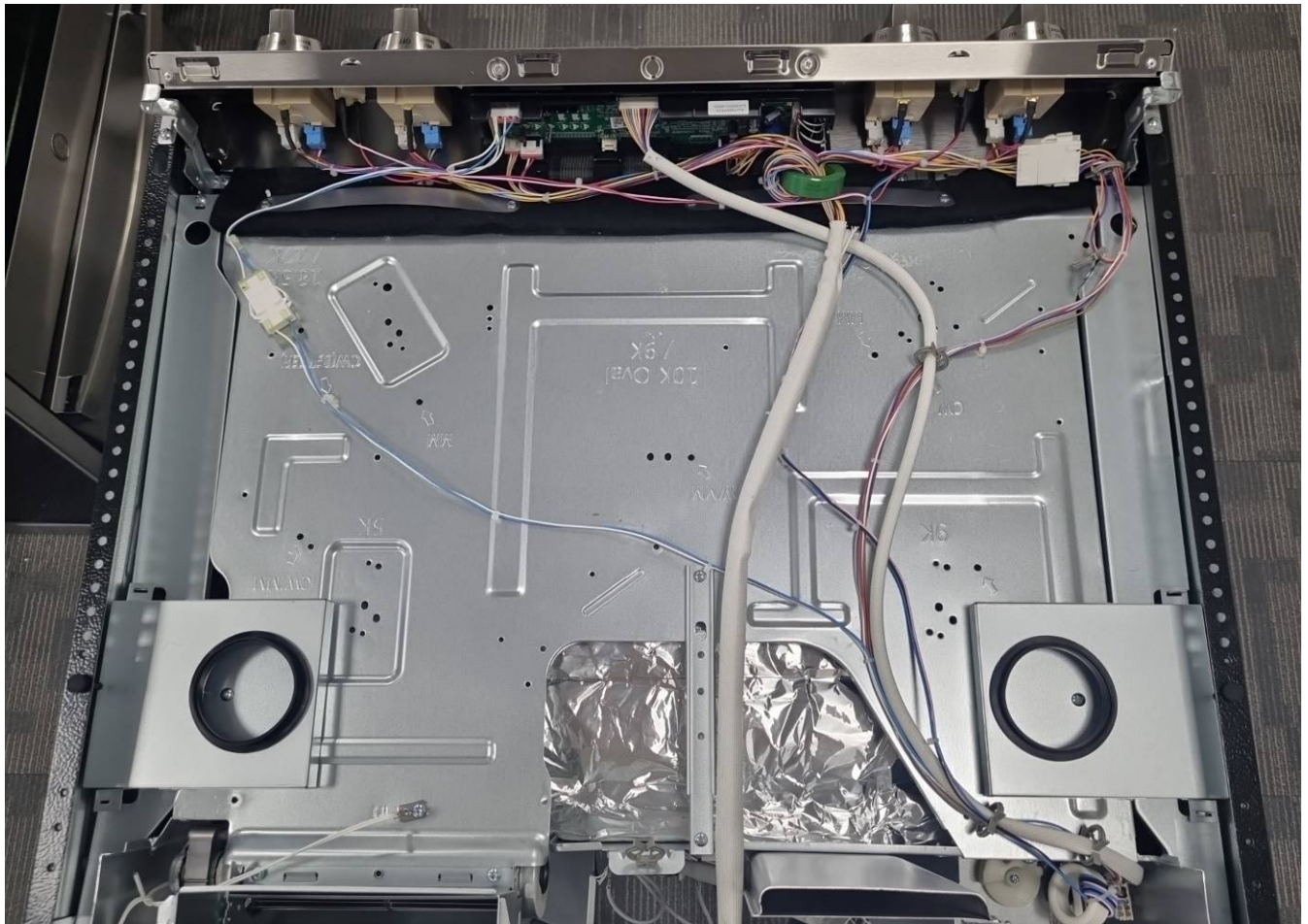


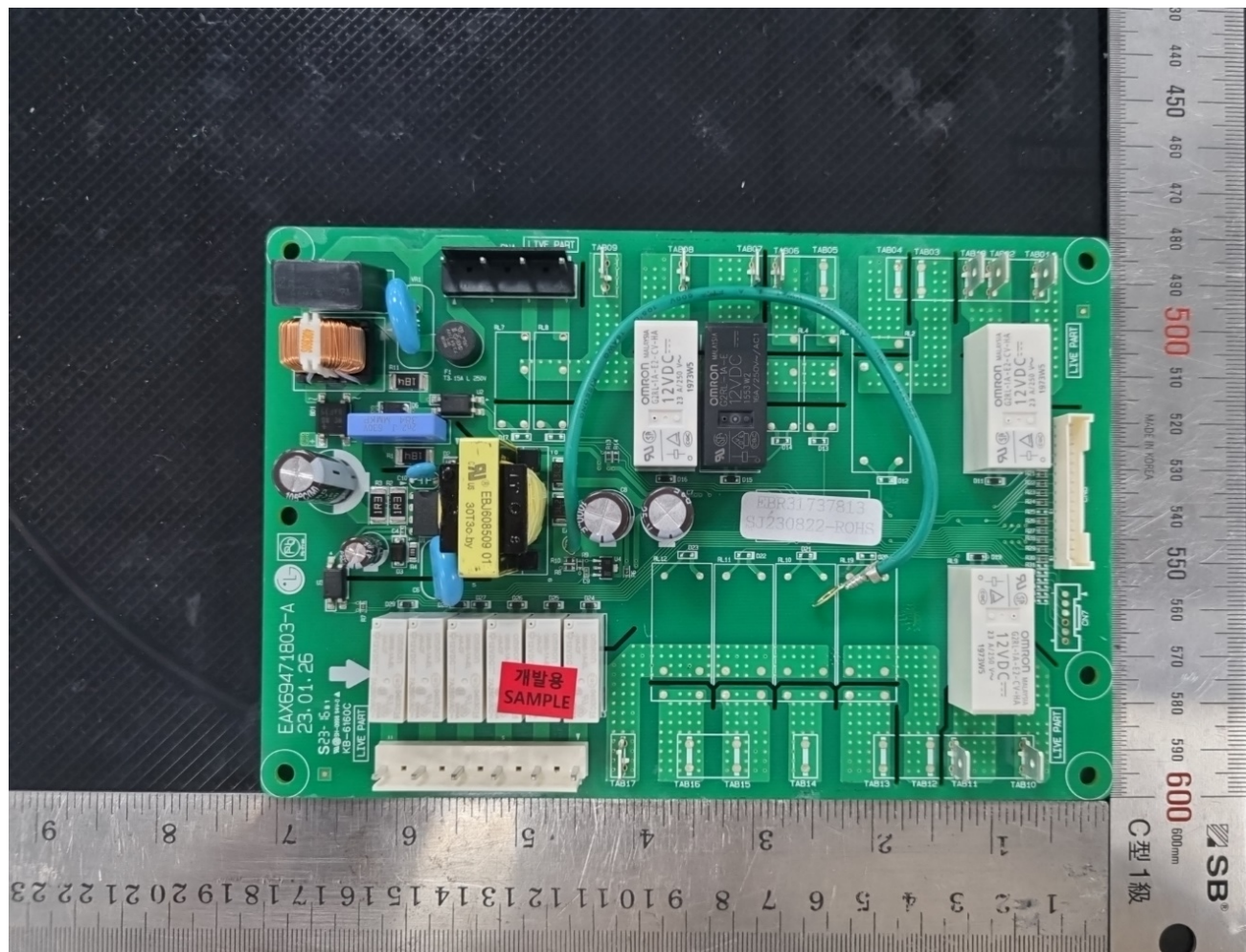
APPENDIX C
[INTERNAL PHOTOGRAPHS]

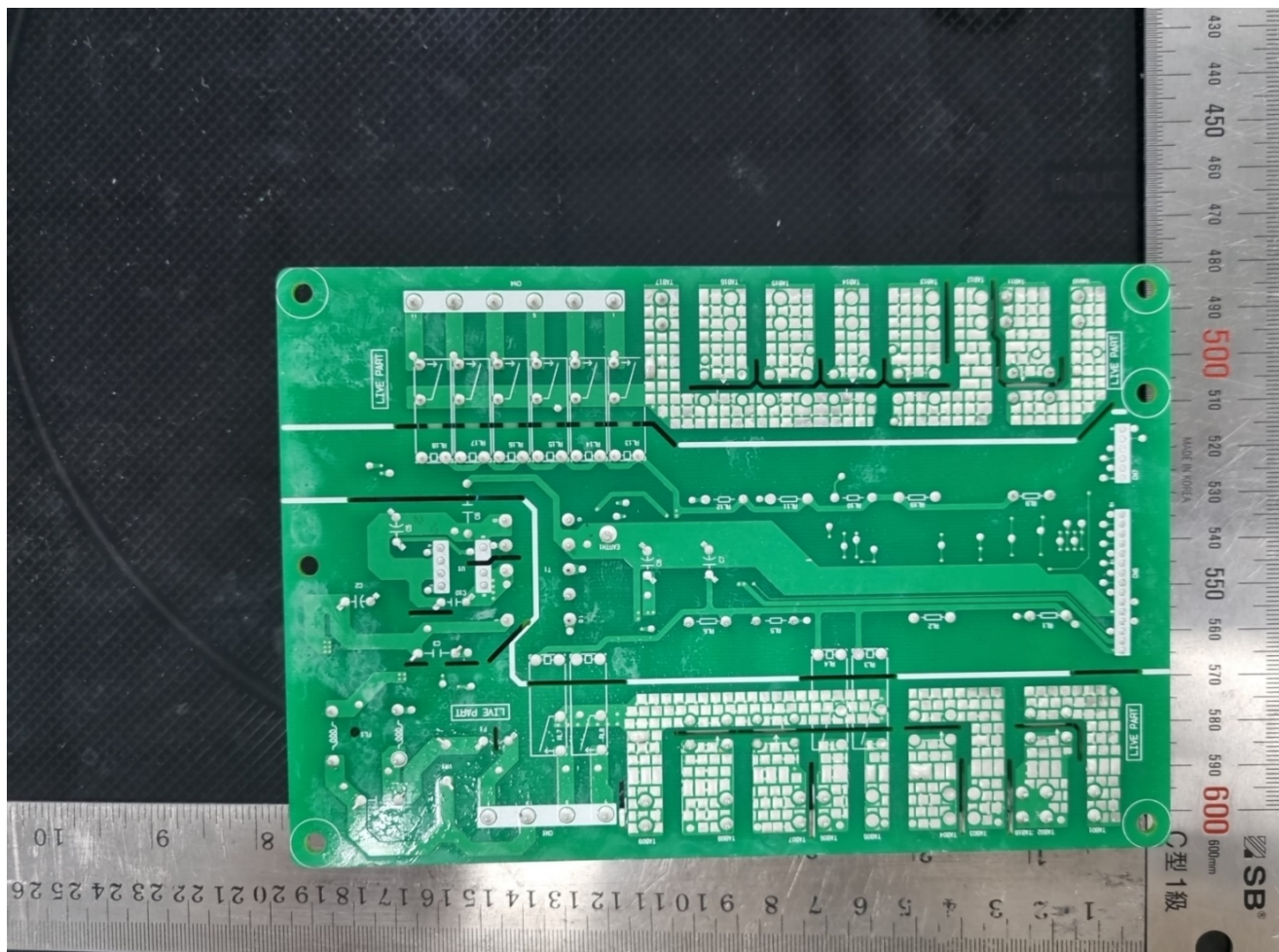


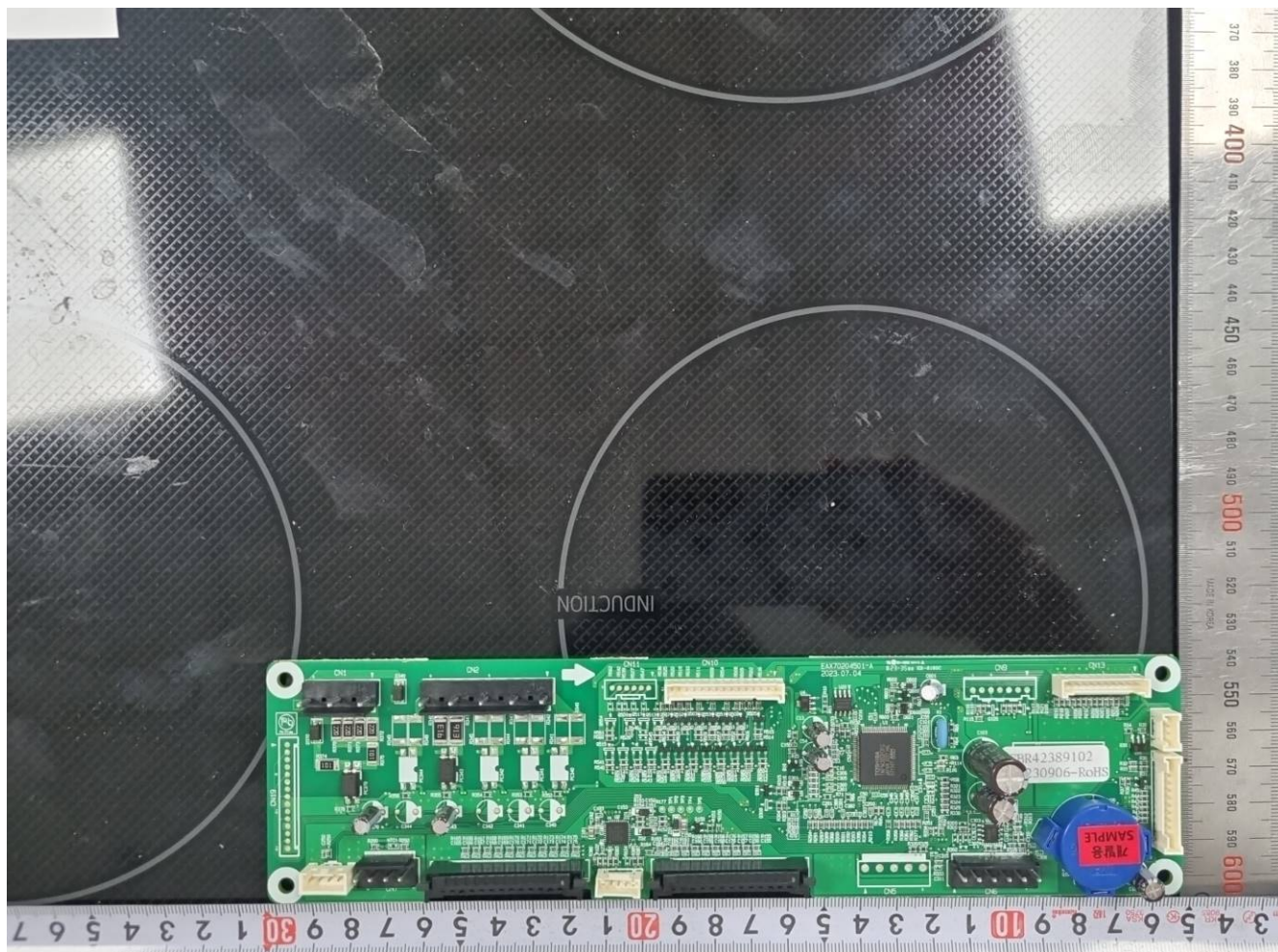


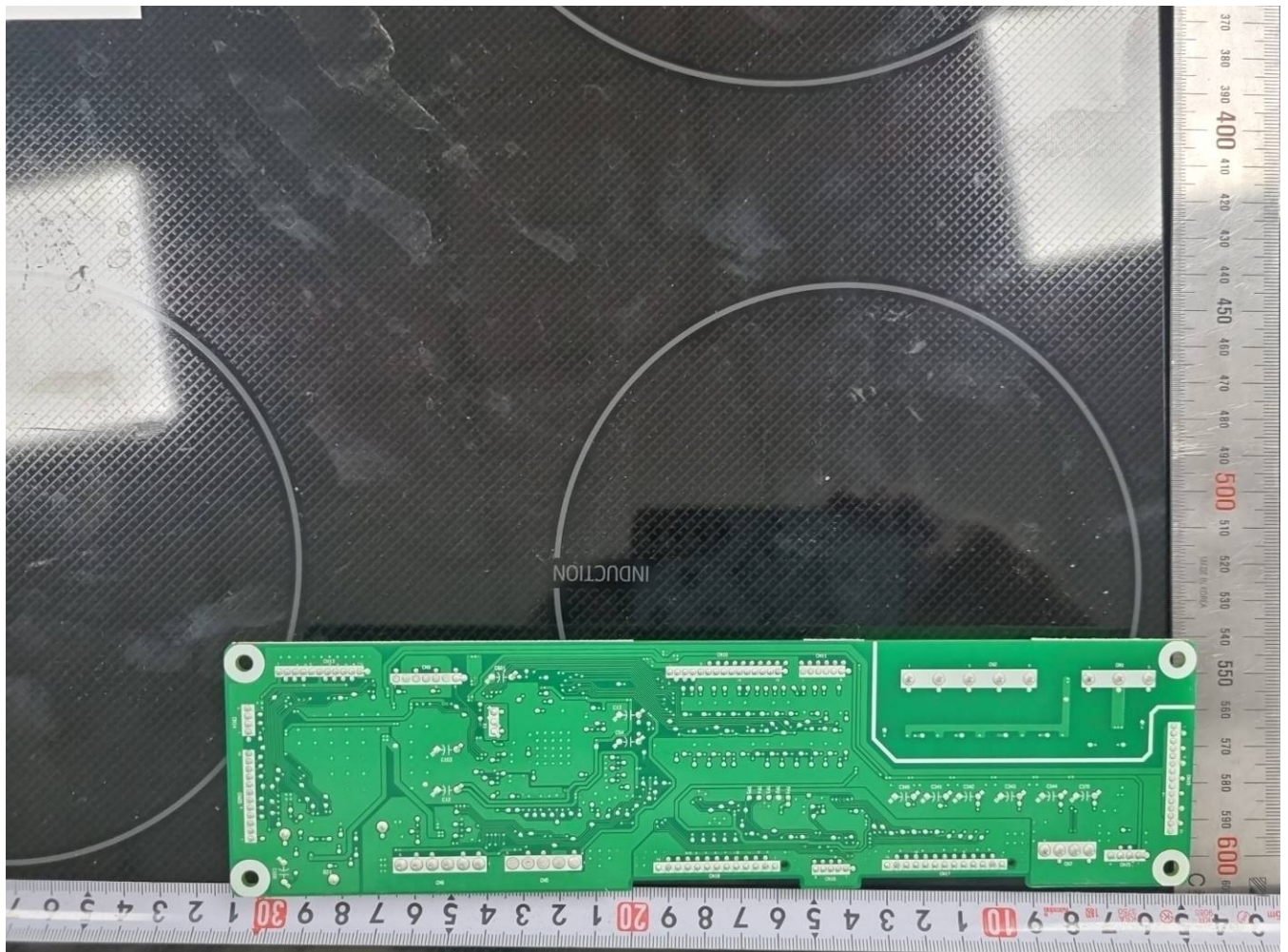


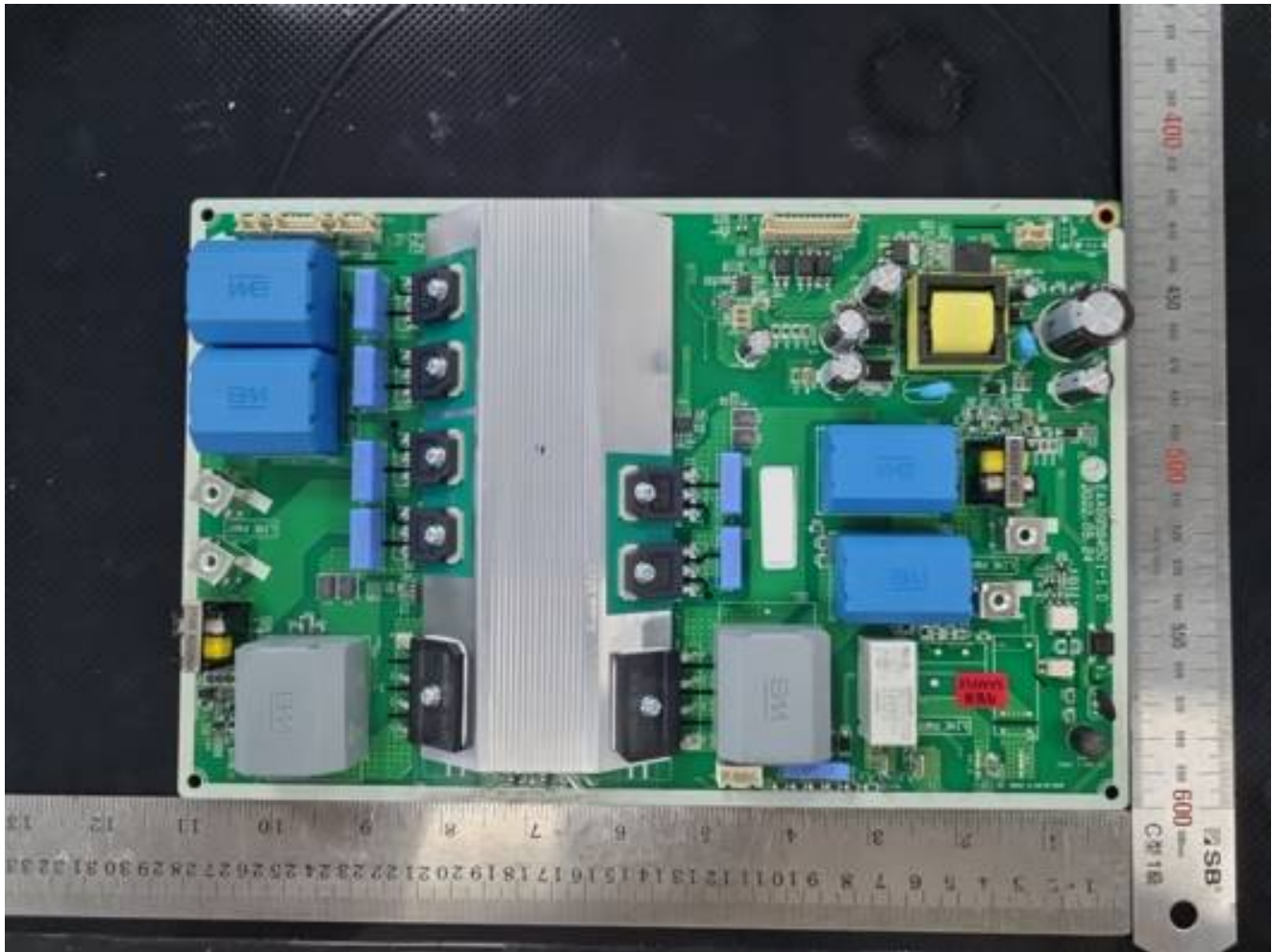


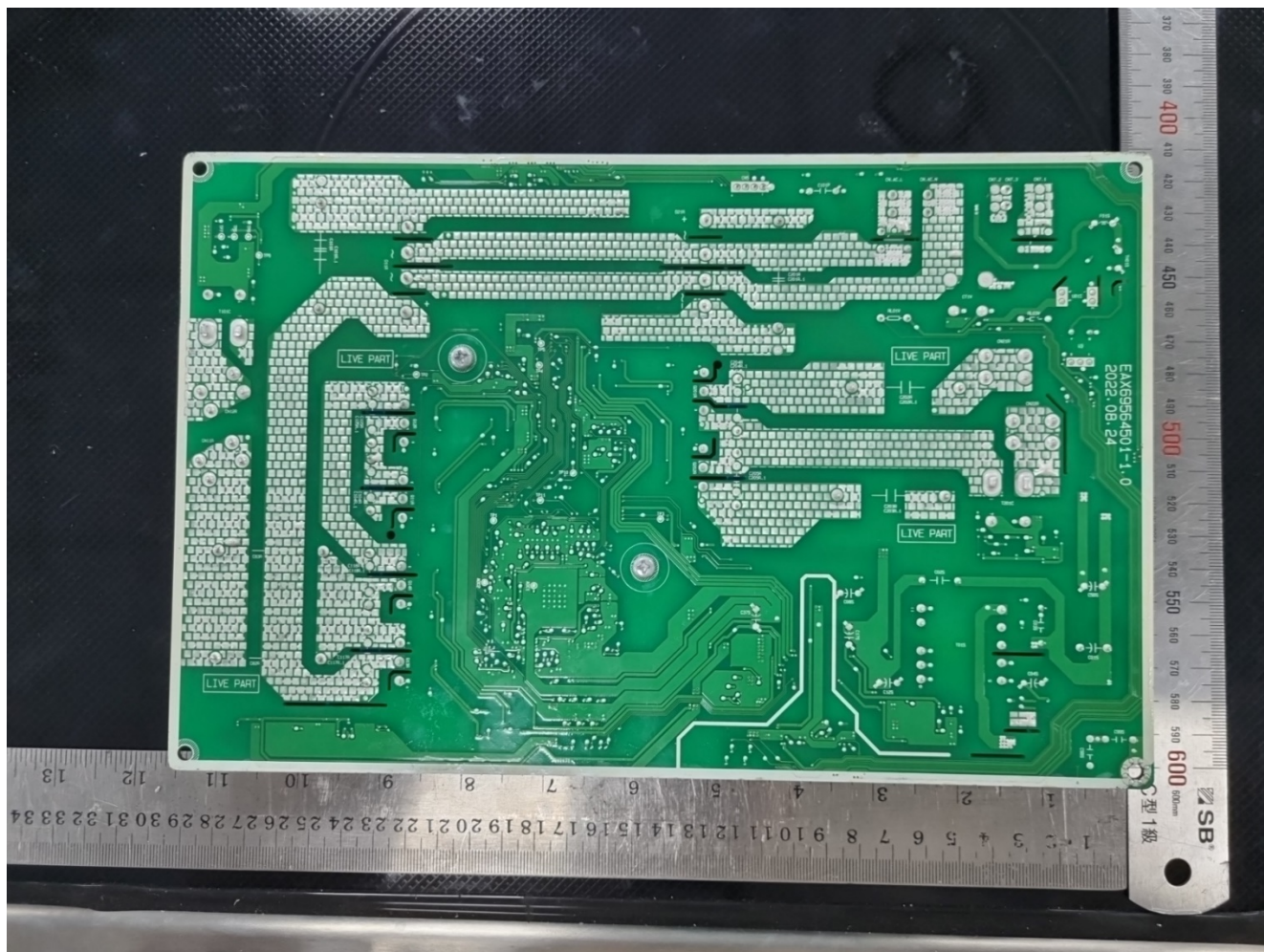


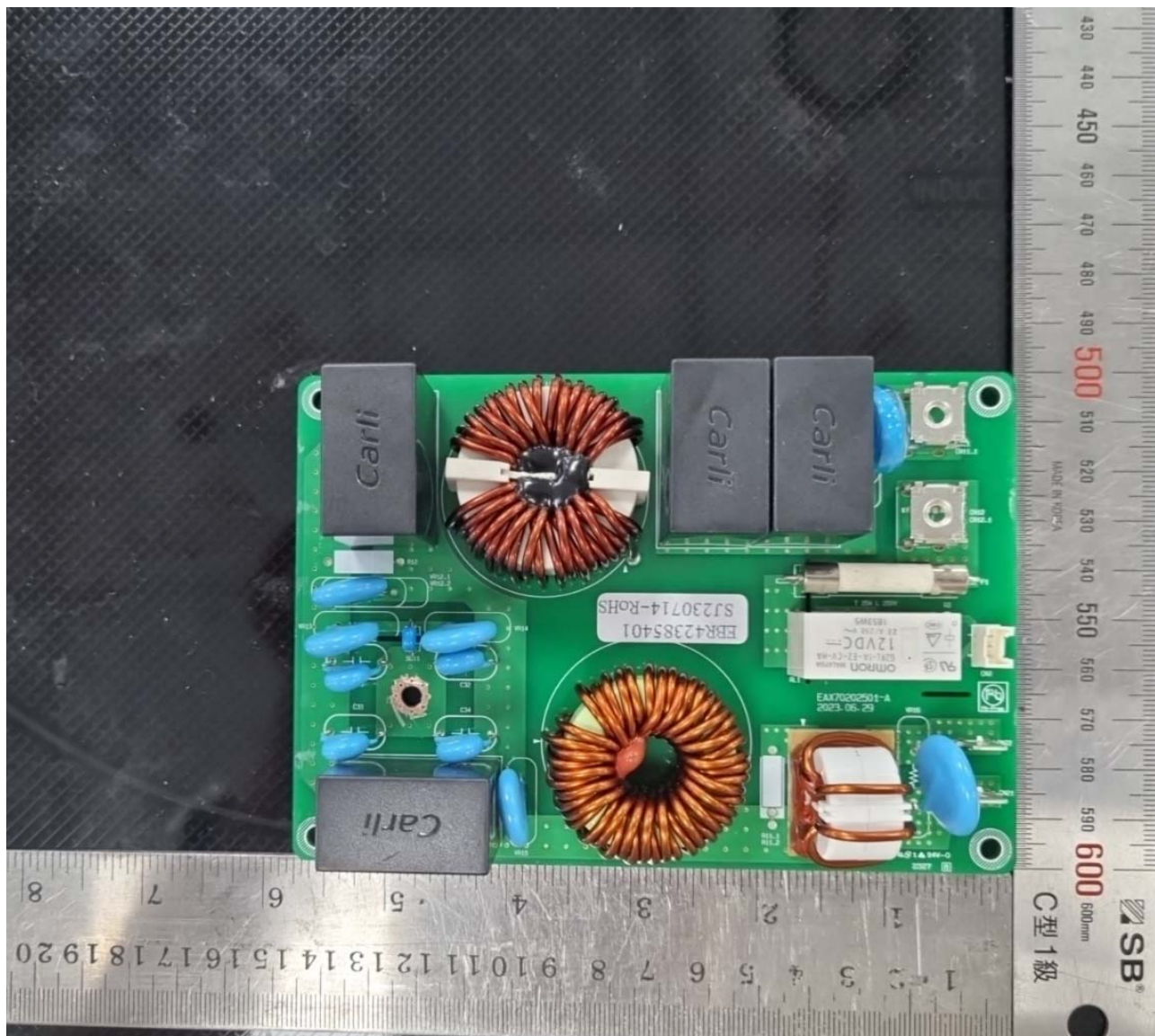


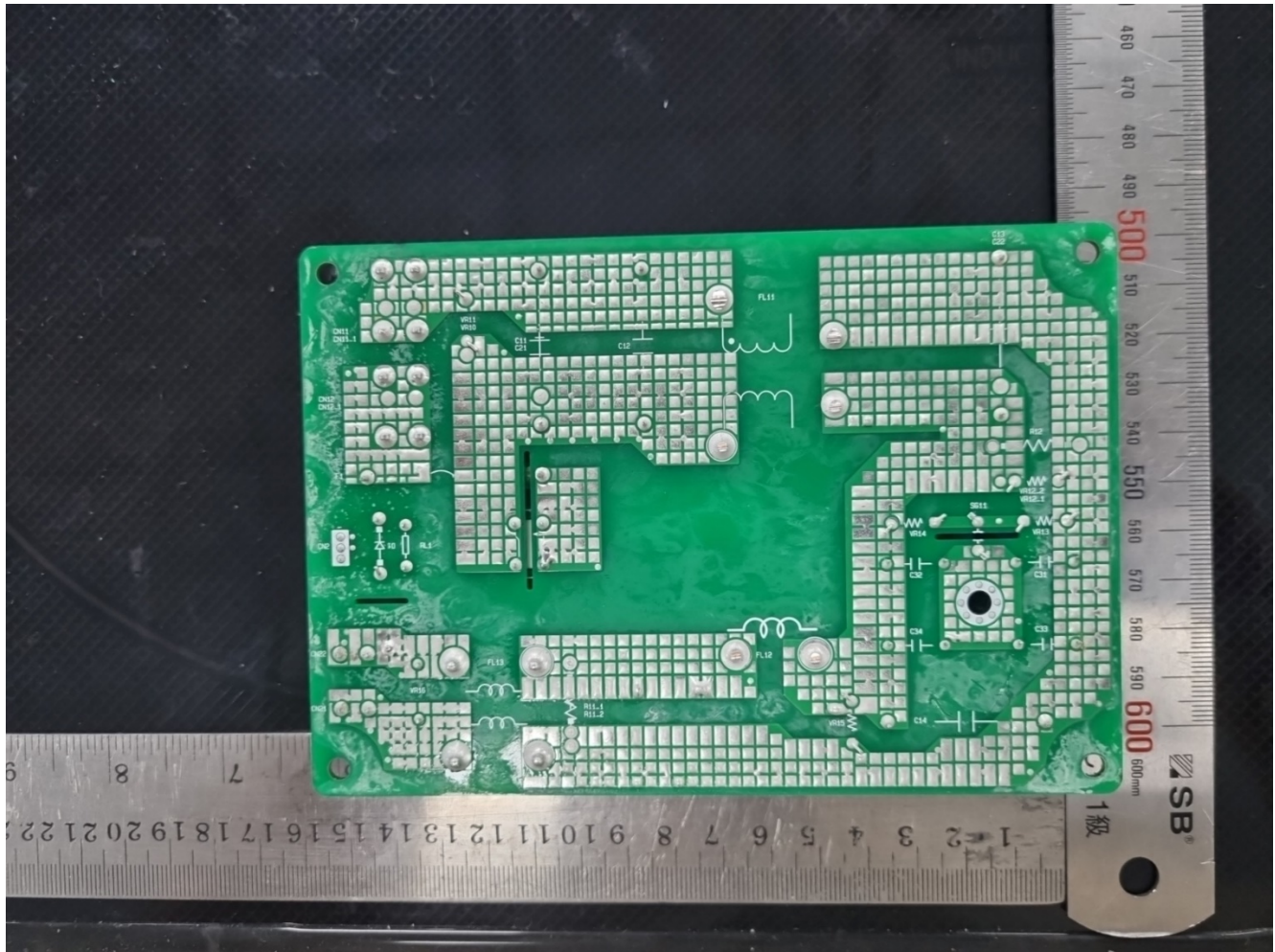




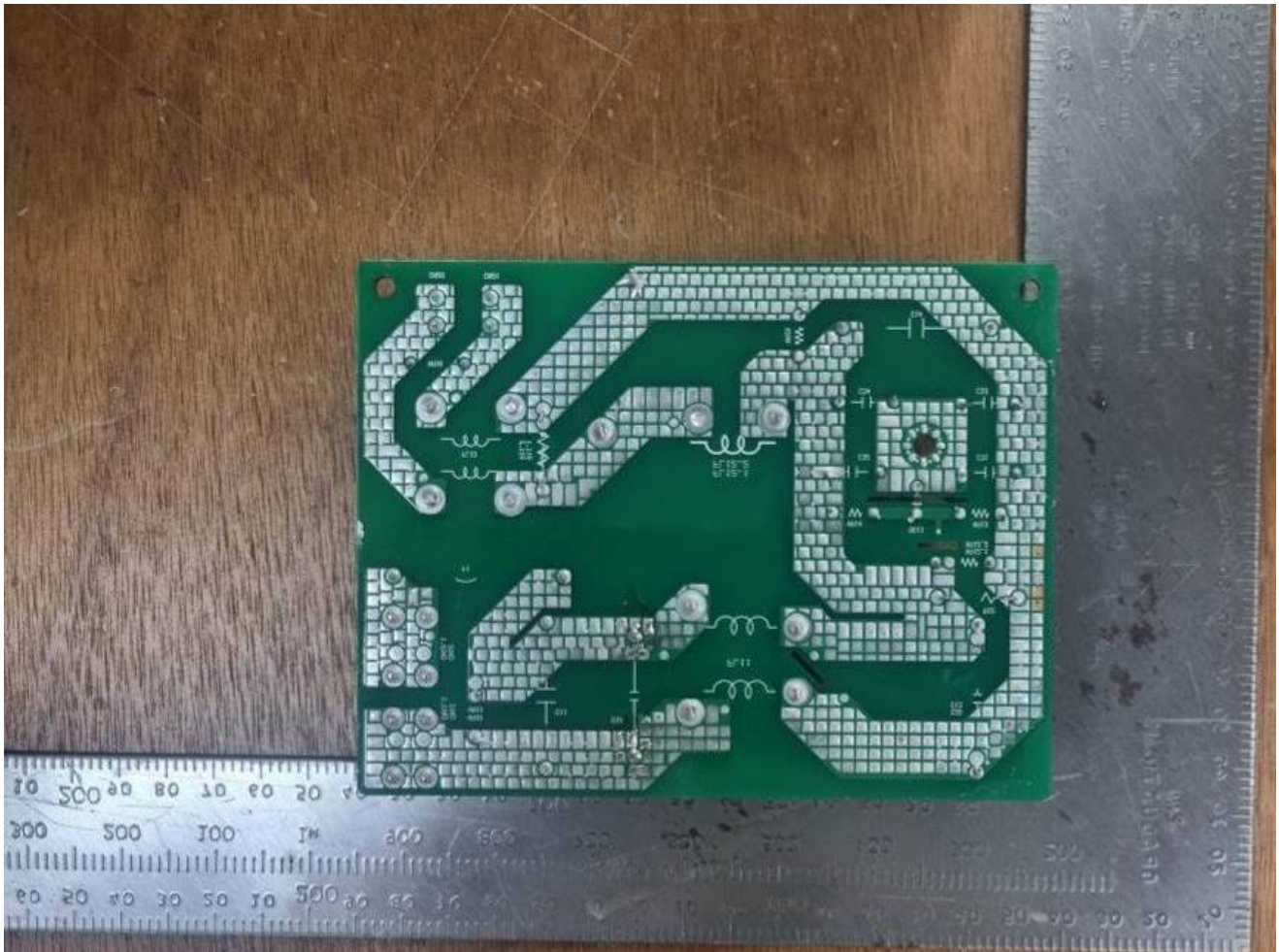




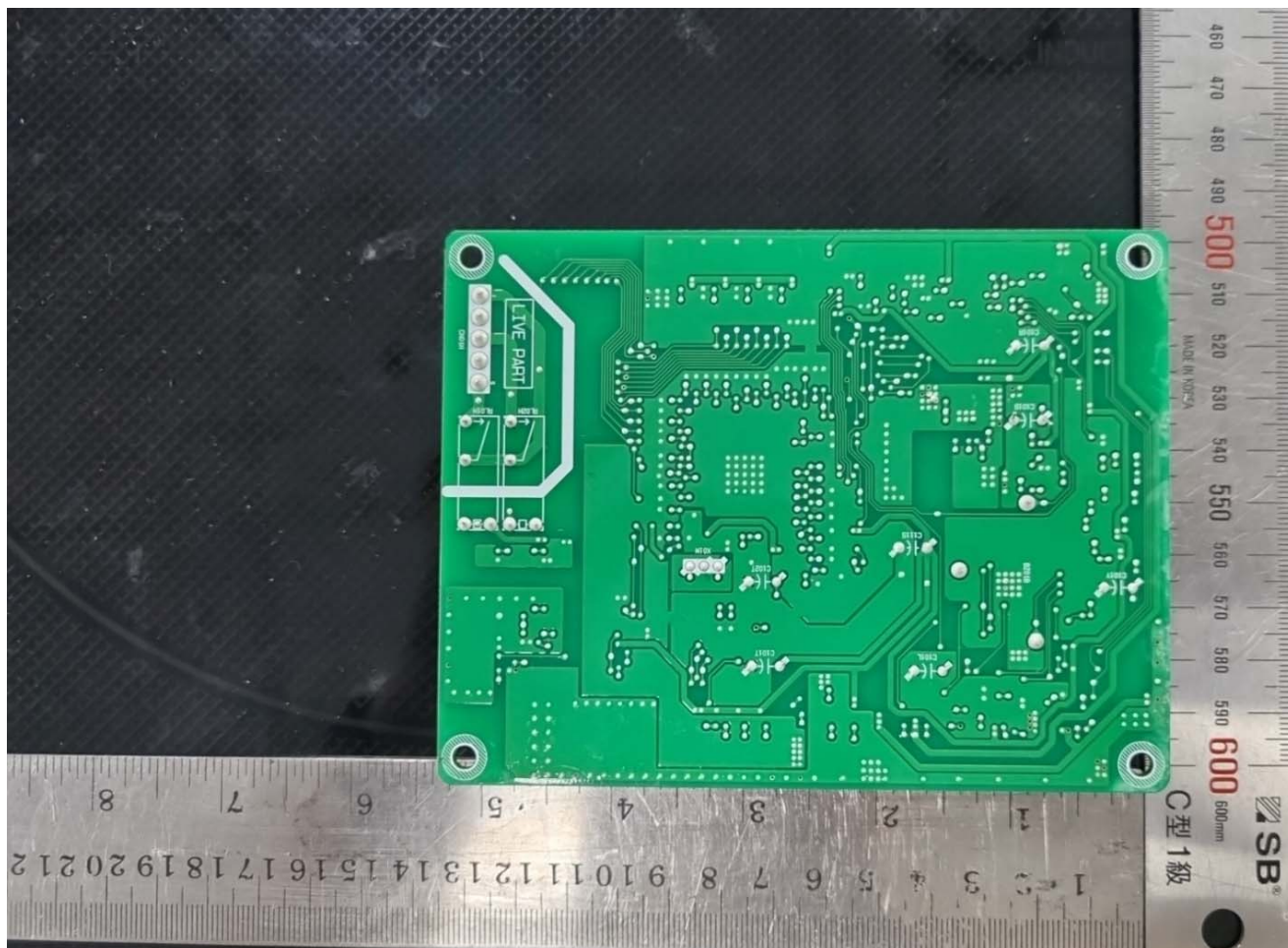


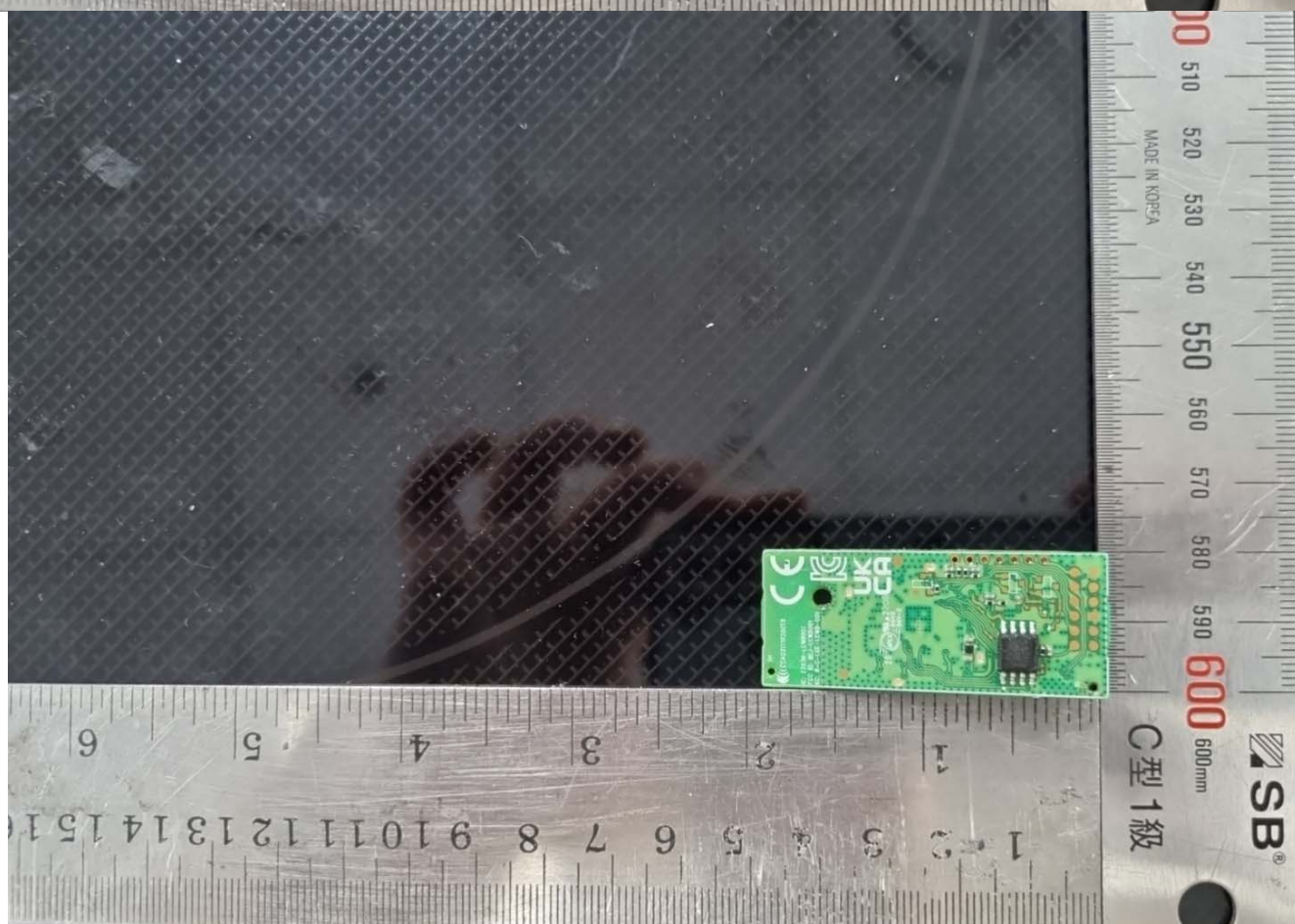
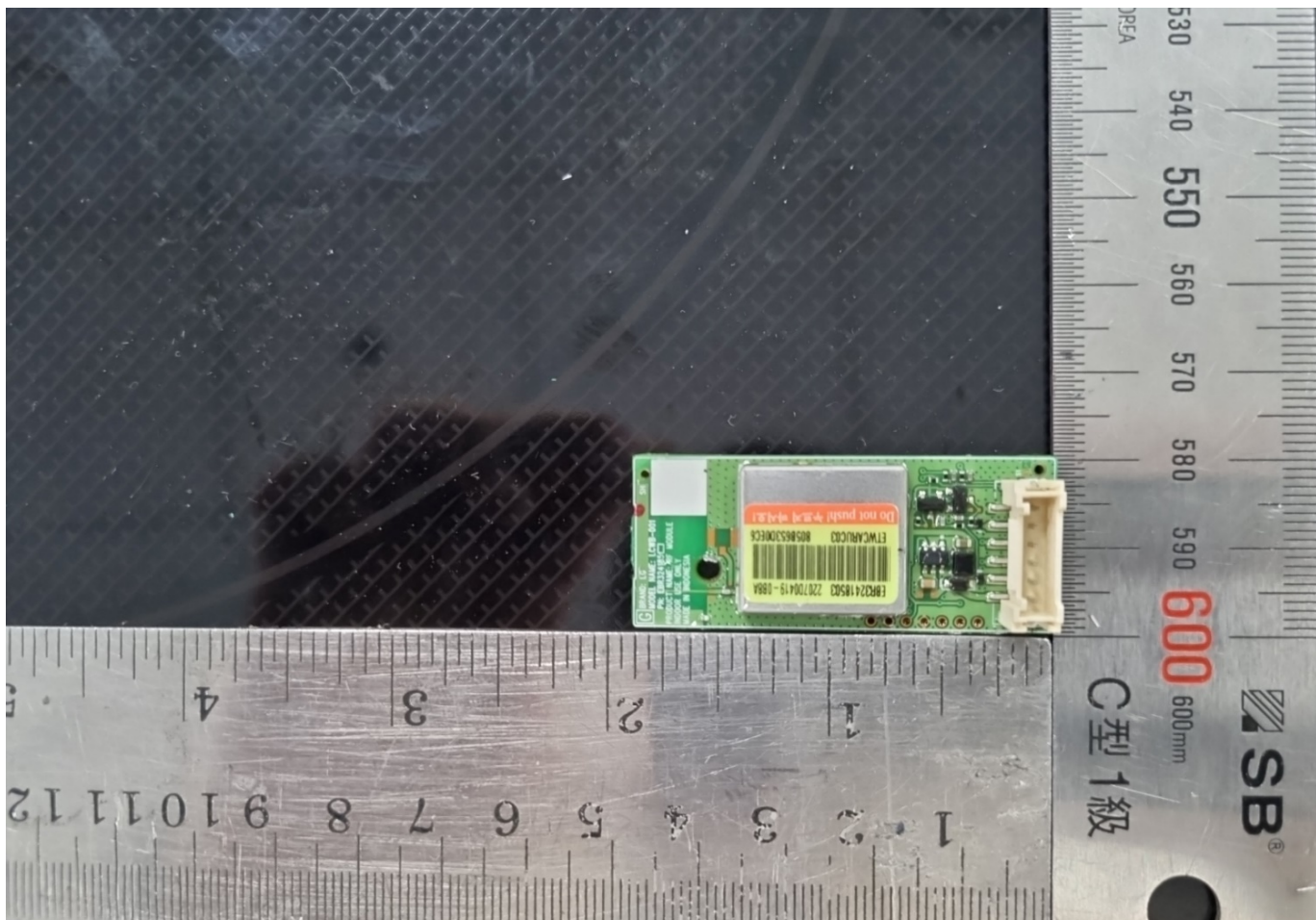














IDENTIFICATION LABEL:

PROPOSED FCC ID LABEL

The FCC ID shall be permanently affixed in the rear side of the equipment

<p align="center">FCC ID : BEJS47113HA Contains FCC ID : BEJ-LCWB001</p> <p>This device complies with Part 18 of the FCC Rules. Operation is subject to the following two conditions: (1) this device may not cause harmful interference, and (2) this device must accept any interference received, including interference that may cause undesired operations.</p> <p>Made in Korea</p>
--

