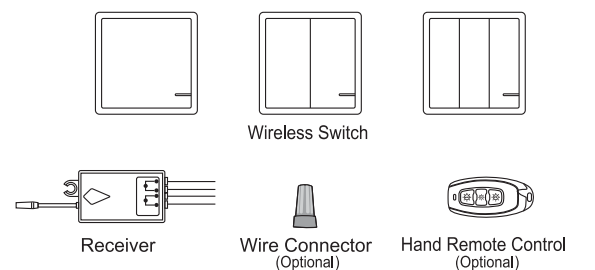


正面: 85x85(mm)

Wireless Switch User Manual

Product Appearance



* Note: The product depicted in this manual may appear slightly different from what you receive in the box *

Manufacturer: Shenzhen King-Serry Electronics Co.,Ltd
Agent Company: ALTOM INTERNATIONAL INC
Address: 9638 RUSH STREET STE D,SOUTH EL MONTE,CA91733
Fax: 001-6264444761
E-mail: bestrose2003@king-serry.com



FCC ID: 2ANPS-SWNK1R01

This device complies with part 15 of the FCC Rules. Operation is subject to the condition that this device does not cause harmful interference (1) this device may not cause harmful interference, and (2) this device must accept any interference received, including interference that may cause undesired operation.

Any changes or modifications not expressly approved by the party responsible for compliance could void the user's authority to operate the equipment.

NOTE: This equipment has been tested and found to comply with the limits for a Class B digital device, pursuant to Part 15 of the FCC Rules. These limits are designed to provide reasonable protection against harmful interference in residential installation. This equipment generates, uses and can radiate radio frequency energy and, if not installed and used in accordance with the instructions, may cause harmful interference to radio communications. However, there is no guarantee that interference will not occur in a particular installation. If this equipment does cause harmful interference to radio or television reception, which can be determined by turning the equipment off and on, the user is encouraged to try to correct the interference by one or more of the following measures:

- Reorient or relocate the receiving antenna.
 - Increase the separation between the equipment and receiver.
 - Connect the equipment into an outlet on a circuit different from that to which the receiver is connected.
 - Consult the dealer or an experienced radio/TV technician for help.
- To maintain compliance with FCC's RF Exposure guidelines, This equipment should be installed and operated with minimum distance between 20cm the radiator your body: Use only the supplied antenna.

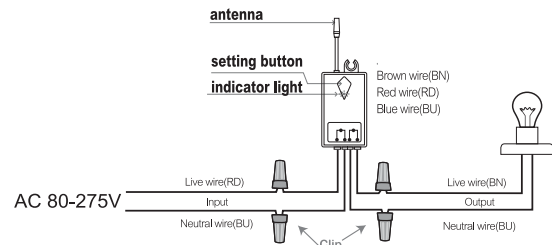
1

Installation Warnings:

1. Had better program the switch from receiver for first installation.
2. **Protect the receivers from damage by falling from height over 1m.**
3. **Do not touch the output live line with output neutral line after wiring, or receiver will be short circuit.**
4. It is not advisable to install switch on metal surface or receiver in a metal confined cover, metal will shield wireless signal, thus shortening remote control distance.
5. Install the receivers where man cannot reach.

Installation

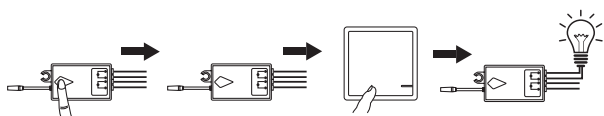
Receiver



Reminder : When received the product, the wireless switch and the receiver must be paired up before use. Please refer to the 3rd page : learning code guide.

2

Learning Code Operation



1. Connect the receiver between the light and the power source.
2. Power on electricity, press and hold the setting button for 2 seconds. When the indicator light flashes, it enters into matching code mode, then loosen your finger.
3. Press the wireless switch button that you want to pair. Use the wireless switch to control the light on or off, indicating that the learning code is successful.
4. Not recommended that 1 switch controls many receivers.

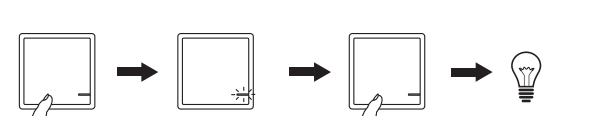
Adding a switch from paired switch



Press and hold paired switch panel for about 20s till LED indicator on switch blinks rapidly ,then loosen your finger, press the new one ,finally test whether it can turn on/off the lamps.

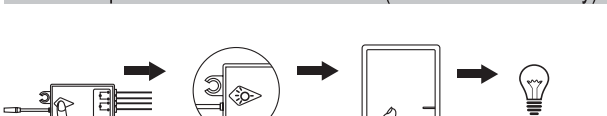
3

Delete the switch code that has been paired (Please use cautiously)



Press and hold paired switch panel for about 60s, during which LED indicator on switch changes from: firstly blinks rapidly; secondly blinks 8 times slowly, thirdly blinks 9 times at slower speed, finally blinks once at slowest speed, then loosen your finger, press the switch panel again cannot control the lamps.

Delete the paired wireless receiver code (Please use cautiously)

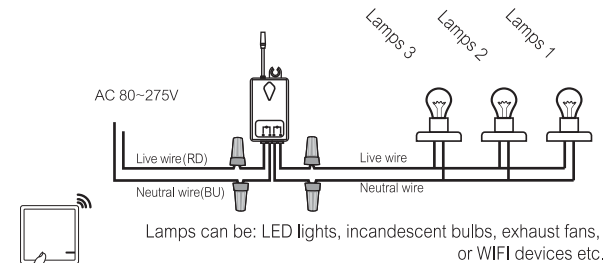


Press and hold the receiver button for about 10s, loosen your finger when indicator light changes from rapid blinks to slower, press the paired switch panel cannot control the lamps.

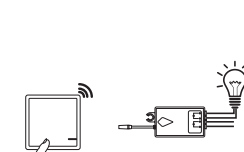
4

Application (Home, hotel, inn or Factory etc.)

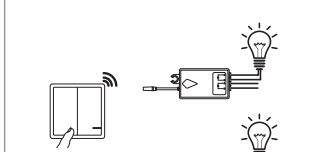
a. The integrated load of the wireless receiver is 1000W.



b. A one-gang wireless switch controls a wireless receiver



c. A two-gang wireless switch controls 2 wireless receivers

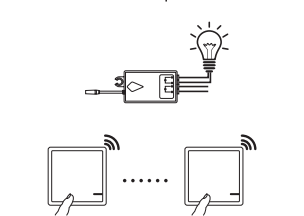


5

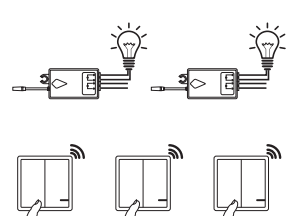
反面85x85(mm)

Application (Home, hotel, inn or Factory etc.)

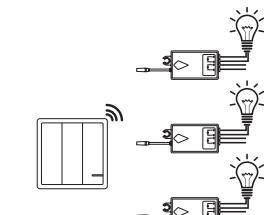
d. A receiver can be controlled by 8pcs of wireless switch panels at most.



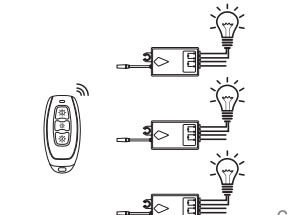
e. Three two-gang wireless switches controls 2 wireless receivers



f. A three-gang wireless switch controls 3 wireless receivers



g. A hand remote control controls 3 wireless receivers

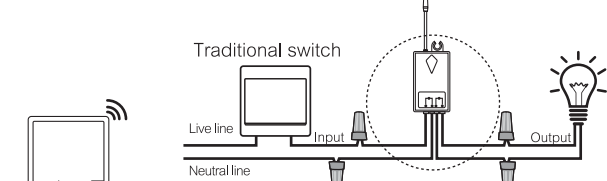


6

How to set Open / Close state of receiver to make wireless switch compatible with traditional switch

Note: The receiver is default in Close state when leaving the factory.

1. Power off electricity, install the receiver as the diagram, and distinguish live from neutral lines.
2. Power on electricity, then program receiver with the switch according to the Learning code Operation chapter.



Wiring diagram of add wireless switch to traditional switch.

IF the receiver is in Open state

- Turn on the traditional switch to light the lamps, the wireless switch can control the lamps.
- Turn off the traditional switch, wireless switch cannot control the lamps.

7

Method of set the receiver in Open state:

Press and hold setting button for 16s, loosen your finger when the indicator light is continuously bright. (During the 16s, the indicator light will change from quick flash to slower flash, after that, the indicator light will be off, then will be on.)

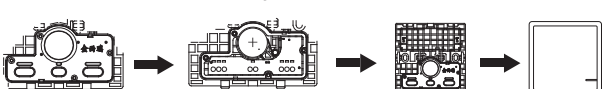
IF the receiver is in Close state:

- Turn on the traditional switch and press the wireless switch to light the lamps, the wireless switch can control the lamps.
- Turn off the traditional switch, wireless switch cannot control the lamps.

Method of set the receiver in Close state:

Same method of set the receiver in Open state, just press and hold setting button for 16s, loosen your finger when the indicator light is continuously bright.

Replace the battery



1. Remove switch frame and panel with hand or screwdriver.
2. Remove 4 screws with screwdriver, take off the battery cover;
3. Replace the old battery with the new one, pay attention to the positive and negative poles of the battery;
4. Install the panel and frame again.

8

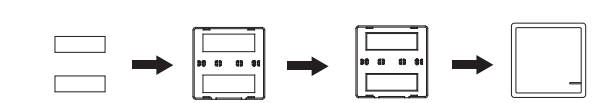
Installation

Wireless Switch

Wireless Switch

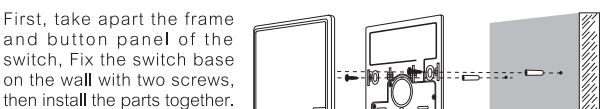
The switch can be surface mounted with screws or double-sided stickers. or set it on the table.

1. Install with Double-sided adhesive. (Included)



Pick up the area where you're going to place the switch, clean the surface with wet rag, post the adhesive rubber in the back of the switch, then attach the switch to the clean surface.

2. Install with screws (not included)



9

Specifications

Parameters of the wireless receiver

Switch times	≈400,000 times	Working voltage	AC 80~275V
Sensitivity	-116dB	Working frequency	433.92 MHz
Working current	≤0.8W	Current	10A or 16A
Temperature rise when working	≤15℃	Standby current	≤0.05W
Signal light on the receiver	Red light	Fireproof PC	CHIMEI
Working temperature	-40~+70℃	Package weight	32~35g

Parameters of the metal hand remote

Size	62*30*12MM	Working frequency	433.92 MHz
Waterproof	IP44	Quantity of the button	3 buttons
Working voltage	2~3V(CR2032)	Life of the battery	≈300,000 times
Standby current	≤0.01 uA	Working temperature	0~65℃
Emission current	≤25 mA	Storage temperature	-10~85℃
Emission Power	≥+5dbM	Remote distance	≈160m outdoor ≈30m indoor

Specifications

Parameters of the wireless switch

Product Size	86*86*11MM or 86*86*13MM	Type	1-gang,2gang, 3-gang
Switch times	≈600,000 times	Working frequency	433.92 MHz
Sensitivity	-116dB	Working voltage	3V (CR2032)
Package weight	82~86g	Life of the battery	≈300,000 times (6~8 years)
Emission current	≤30 mA	Standby current	≤0.01 uA
Working temperature	-40~+70℃	Waterproof	IP66
Working characteristics	No need wiring	Material	Fireproof PC
Wireless Range:	Open Space 300~500M;	Light on the switch	Blue light
Wireless Range:	Indoor 30~100M	Interchangeable panel	The three kinds of panels can be interchangeable

2020.09