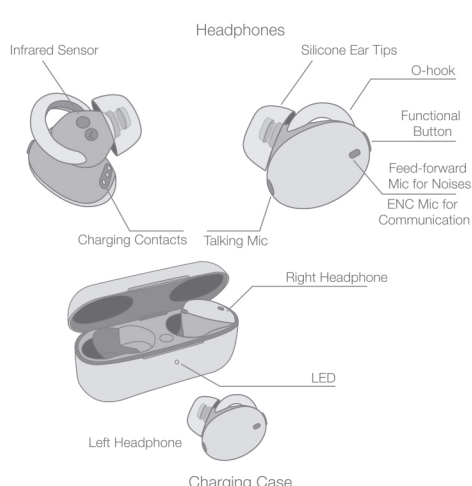
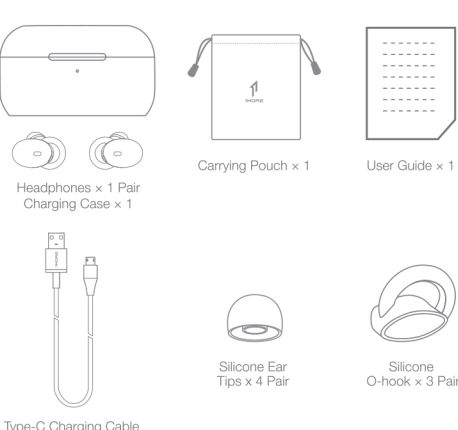
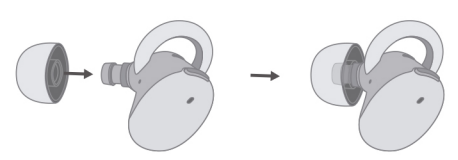


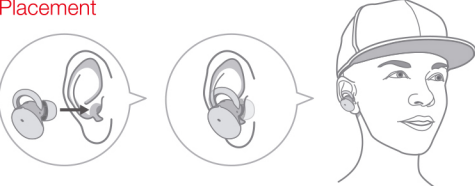
Unpack The Box



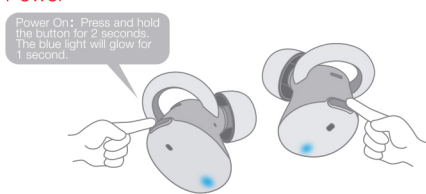
Replace



Placement



Power



Standby in Sleep Mode
Headphones are turned on:
1. When put inside the case, they will standby in Sleep Mode.
2. When put outside the case, they will standby in Sleep Mode if not be wearing and no operation in 3 minutes.
* Above functions are available in Right earbud in individual mode, and can also be implemented in both Left and Right earbuds in Stereo mode.

Pairing the Headphones

Headphones in case will be in standby mode, once taken out they will turn on. Once on, headphones will automatically pair to each other. Both earpieces in pairing mode will be indicated by red and blue alternate flashing lights. LED will turn off once paired successfully.

Switching Master/Slave Between Left/Right Earbud

The default setting with the earbuds is Right as the Master and Left as the Slave. As the Master, Right earbud will automatically connect to your device, while the Left earbud connects to the Right (when same battery level).
1. Left earbud will switch to Master when the battery level of the Left earbud is 30% higher than the Right.
2. If Master becomes out of range from connected device, then the Slave will switch to Master and initiate pairing mode to connect to your device. Previous Master will enter pairing mode.

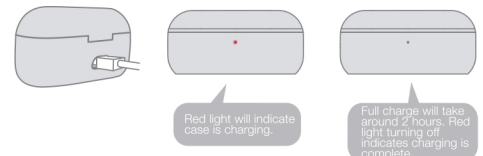
Connecting to your device (first use)

For the first use, take out the earbuds from charging case and power on to enter the pairing mode. The red and blue lights will flash alternately. Headphones will power off if not paired to a device within 5 minutes.

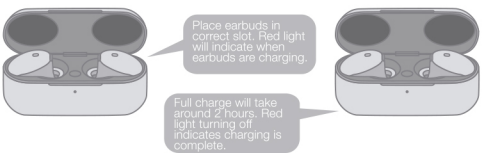
* After first successful pairing, headphones will automatically connect to your device.
Press and hold the button for 2 seconds when power on and no phone-calling, headphones will skip the recorded device and pair to the new one.
* Above functions are available in individual mode, and can also be implemented in Stereo mode.

Charging

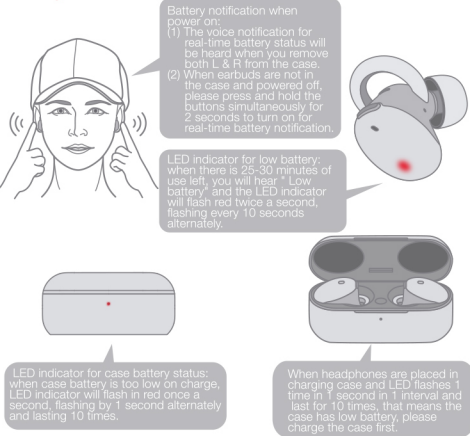
① To charge the case with Type-C cable.



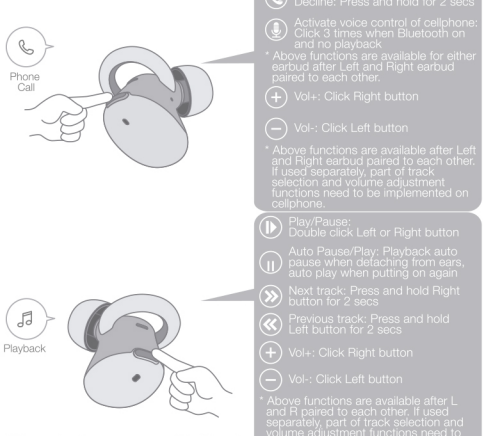
② To charge the headphones with the case.



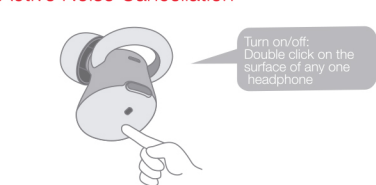
Battery Notification



Controls



Active Noise Cancellation



Extra Functions

If the headphones cannot pair normally when power on, click both buttons simultaneously for 4 times to start the re-searching mode.
To unpair the cellphone:
Put both L & R into the case, and then press and hold the pairing button for 2 seconds.
To unpair the L & R headphones and cellphone:
Put both L & R into the case, and then quick click the pairing button for 3 times.

Limited Warranty

1MORE Inc., (1MORE) warrants to the original retail purchaser that this product is to be free from defective materials and workmanship for a period of one year from the date of purchase, if it is properly used and maintained. If this product proves defective in either material or workmanship, 1MORE, at its option, will (a) repair the product, or (b) replace the product, at no charge for parts or labor. If the product model is no longer available and cannot be repaired effectively or replaced with an identical model,

1MORE at its sole option may replace the unit with a current model of equal or greater value. In some cases, modification to the mounting surface may be required where a new model is substituted. 1MORE assumes no responsibility or liability for such modification. To obtain a repair or replacement under the terms of this warranty, please return to dealer first, if possible, and the dealer will direct you accordingly for repairs or replacement. You will be required to submit a copy of the original receipt. Return shipping for exchanges/repairs is the sole responsibility of the original retail purchaser.

Limitations:

- This limited warranty does not cover failure of the product resulting from improper installation, misuse, abuse, accident, neglect, mishandling, or wear from ordinary use or environmental deterioration.
- This limited warranty does not cover cosmetic damage, including paint damage, or consequential damage to other components or premises which may result for any reason from the failure of the product.
- This limited warranty is null and void for products not used in accordance with 1MORE's instructions.
- This limited warranty is null and void for products with altered or missing serial numbers and for products not purchased from an authorized dealer.
- This limited warranty terminates if you sell or otherwise transfer this product to another party.

We Appreciate Your Business

We know you will enjoy new 1MORE headphones as much as we do. At 1MORE, we value your satisfaction. If you would like more details on this product or any of our other products, please visit us online by scanning the QR code. Go to www.1more.com and sign up for VIP, and 1MORE will treat you like one.

WEEE

Electrical and electronic equipment, parts and batteries marked with this symbol must not be disposed of with normal household wastage, it must be collected and disposed of separately to protect the environment.
Your 1MORE retailer will advise you of the correct way of disposal in your country. Do not expose batteries or battery packs to excessive heat such as sunshine, fire or the like.

CE

Hereby, 1MORE, declares that this Radio LAN device is in compliance with the essential requirements and other relevant provisions of Directive **2014/53/EU**

FCC

This device complies with FCC radiation exposure limits set forth for an uncontrolled environment.

This device complies with Part 15 of the FCC Rules. Operation is subject to the following two conditions: (1) this device may not cause harmful interference, and (2) this device must accept any interference received, including interference that may cause undesired operation.

Caution!

Any changes or modifications not expressly approved by the party responsible for compliance could void the user's authority to operate the equipment.

Tips

- Please read this instruction manual carefully and retain for future reference.
- Please fully charge the battery before first use.
- If the headphones have been unused for more than 3 months, we recommend that you charge them. This will improve battery capacity.
- Only use chargers that are FCC (Federal Communications Commission) approved.
- In dry environments, static electricity may numb your ear. This is not related to the quality of the product.

Safety Information

- Never disassemble the headphones. There are no user-serviceable parts inside.
- Do not expose the headphones to temperatures below 32 °F (0 °C) or to temperatures above 113 °F (45 °C).
- Do not use the headphones in a thunderstorm storm. This could prevent the headphones from working properly, and also increase your chance of being electrically shocked.
- Do not use oil or any volatile liquid to clean this product.
- Do not listen at high volumes for extended periods of time.
- Do not use the headphones while operating a motor vehicle. Do not use the headphones any time it would be dangerous to be unaware of noises around you.
- Adult supervision is required for children age 6 and under.
- If you don't feel comfortable after wearing the headphones, please refer to an aurist for advice on whether or not in-ear headphones are suitable for you.

FAQ

- The headphones don't turn on.
Check if your headphones have enough battery life. If not, please charge them for at least 30 minutes.
 - The headphones and my device do not connect, or take a long time to connect.
1) Check that your headphones are in the "discoverable" mode (red and blue lights flash alternately).
2) Make sure that your headphones are not connected to other devices, and that your device is not connected to other Bluetooth devices.
3) If headphones fail to connect, please put headphones into the correct slots in the charging case and take out again, headphones will automatically pair to mobile phone.
 - My Android device successfully connects to the headphones, but the headphones don't play music.
After pairing successfully, on the Bluetooth menu of your device, tap the icon on the right of your device name and make sure the "Media Audio" option is on.
 - My Android device successfully connects to the headphones, but there is no sound from the headphones while making phone calls.
After pairing successfully, on the Bluetooth menu of your device, tap the icon on the right of your device name and make sure the "Phone Audio" option is on.
 - The Bluetooth connection is not stable, causing some interruptions.
1) Try shortening the distance between your headphones and device. Avoid solid barriers in between.
2) Please keep away from strong interference sources, such as Wi-Fi and GPRS.
3) Please make sure the Bluetooth antenna of your device is not blocked.
 - While using third party music/video player apps, some in-line remote control functions do not match those in the manual.
- Your operating system and the third party music/video player apps may have different settings for the in-line remote control functions. We recommend that you use the music/video player apps that your device has originally provided.
- Note: For more detailed product FAQs, please visit the product support section under www.1more.com

Charging box

Charging box supports wireless charging function

Accessories information: USB cable

Operating temperature: 0°C -45°C

Operating frequency range:

2400-2483.5MHz

2.4G Tx Frequency Range: 2402MHz~2480MHz;

Outputpower:

Bluetooth for classic:8.9dBm

BLE:6dBm

Declaration of Conformity

Hereby, Tiinlab Acoustic Technology Limited declares that the radio equipment type EHD9001TA of 1MORE True Wireless ANC In-Ear Headphones is in compliance with Directive 2014/53/EU.

The full text of the EU declaration of conformity is available at the following internet address:

<https://www.1more.com>

This device may be used in each member state.

NOTE: The manufacturer is not responsible for any radio or TV interference caused by unauthorized modifications to this equipment. Such modifications could void the user's authority to operate the equipment.

NOTE: This equipment has been tested and found to comply with the limits for a Class B digital device, pursuant to part 15 of the FCC Rules. These limits are designed to provide reasonable protection against harmful interference in a residential installation. This equipment generates uses and can radiate radio frequency energy and, if not installed and used in accordance with the instructions, may cause harmful interference to radio communications. However, there is no guarantee that interference will not occur in a particular installation. If this equipment does cause harmful interference to radio or television reception, which can be determined by turning the equipment off and on, the user is encouraged to try to correct the interference by one or more of the following measures:

- Reorient or relocate the receiving antenna.
- Increase the separation between the equipment and receiver.
- Connect the equipment into an outlet on a circuit different from that to which the receiver is connected.
- Consult the dealer or an experienced radio/TV technician for help
- This device and its antenna(s) must not be co-located or operating in conjunction with any other antenna or transmitter.

This equipment complies with FCC RF radiation exposure limits set forth for an uncontrolled environment.

This device complies with part 15 of the FCC rules. Operation is subject to the following two conditions: (1) this device may not cause harmful interference, and (2) this device must accept any interference received, including interference that may cause undesired operation.

IC Statement

This device complies with Industry Canada licence-exempt RSS standard(s). Operation is subject to the following two conditions: (1) this device may not cause harmful interference, and (2) this device must accept any interference received, including interference that may cause undesired operation.

Le présent appareil est conforme aux CNR d'Industrie Canada applicables aux appareils radio exempts de licence. L'exploitation est autorisée aux deux conditions suivantes : (1) l'appareil ne doit pas produire de brouillage, et (2) l'utilisateur de l'appareil doit accepter tout brouillage radioélectrique subi, même si le brouillage est susceptible d'en compromettre le fonctionnement.