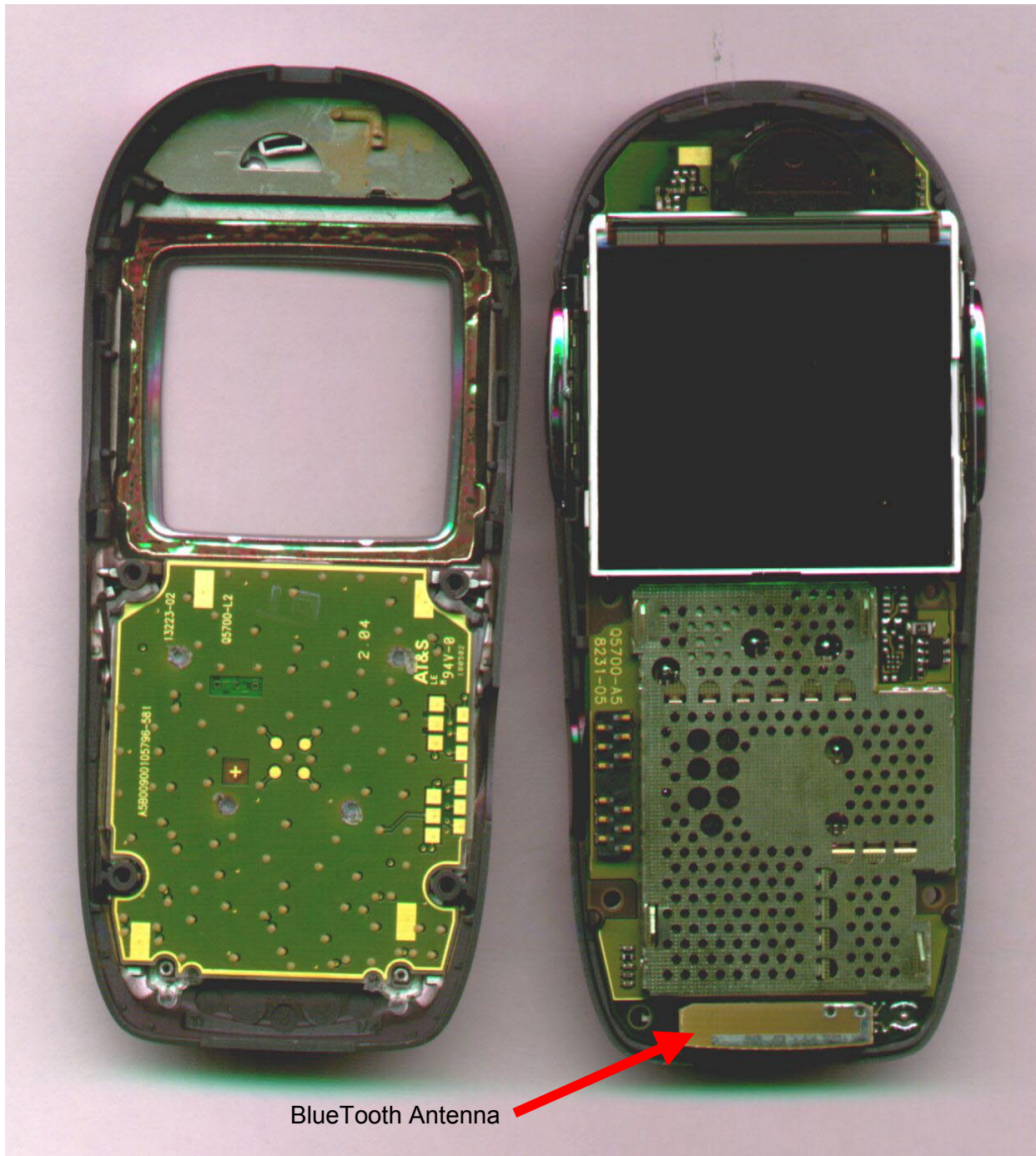


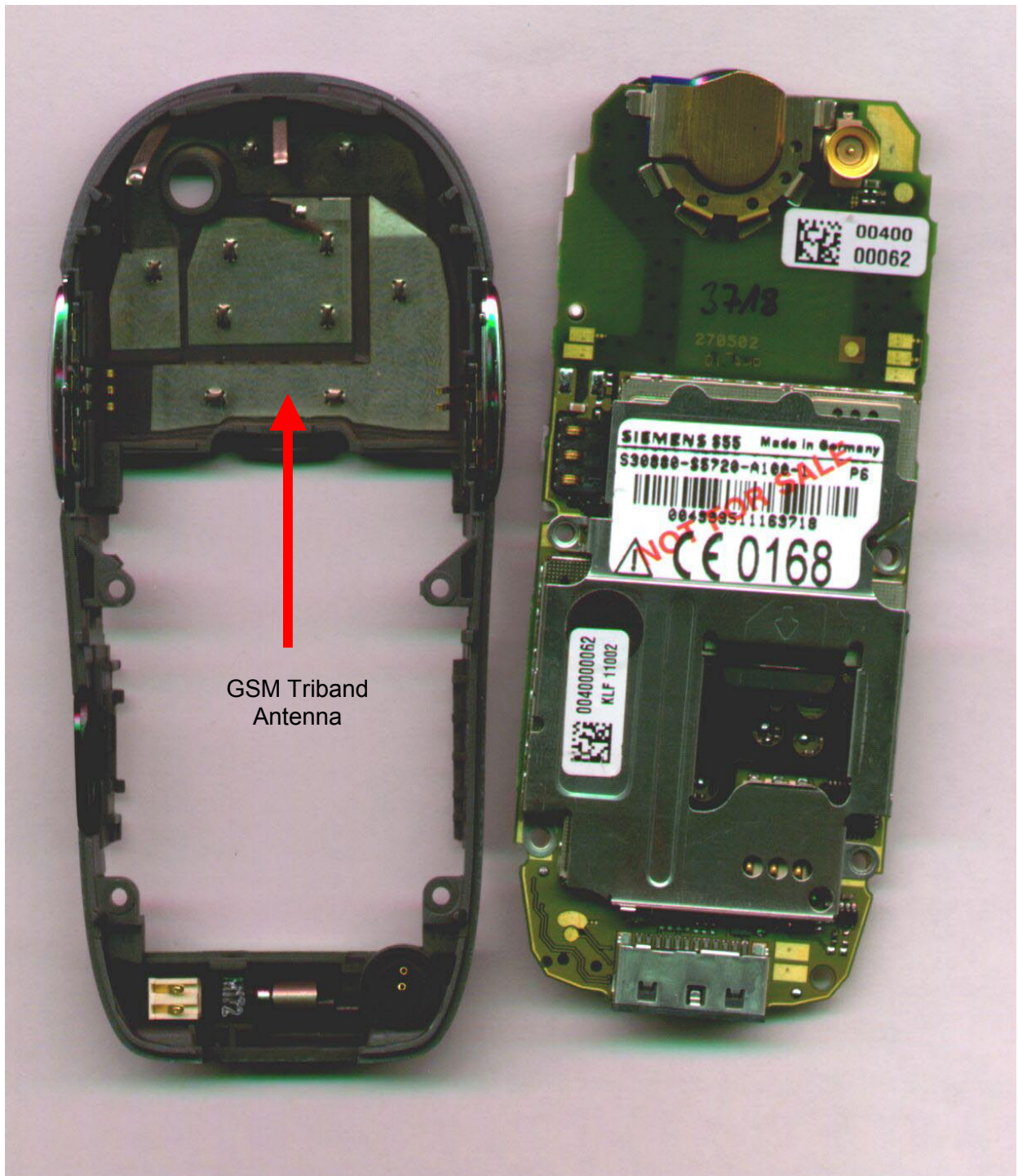


S55 open battery cover  
(Final label: see extra exhibit)

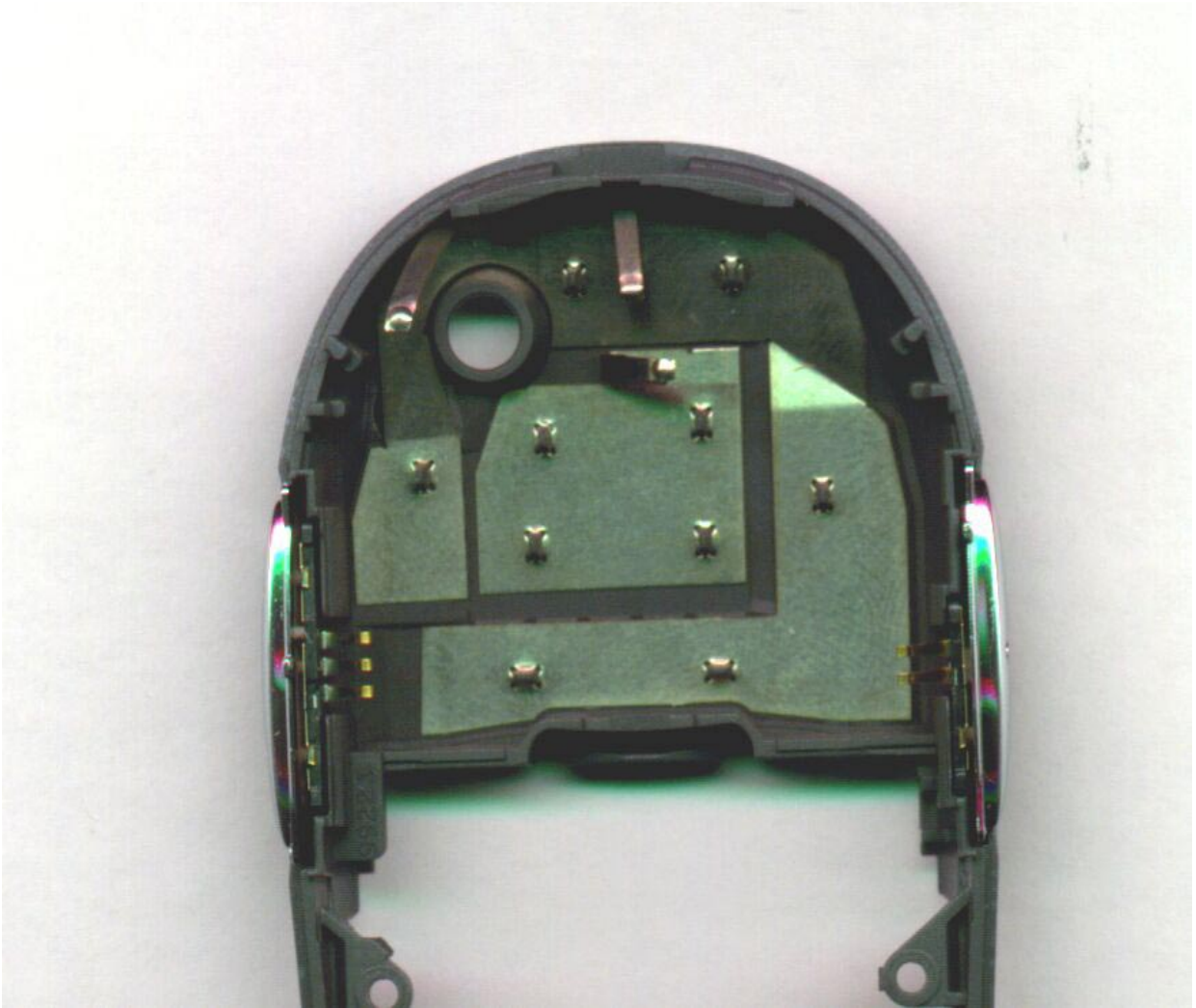


S55 Disassembly step 1:  
BlueTooth Antenna





S55 Disassembly step 2:  
GSM Triband Antenna

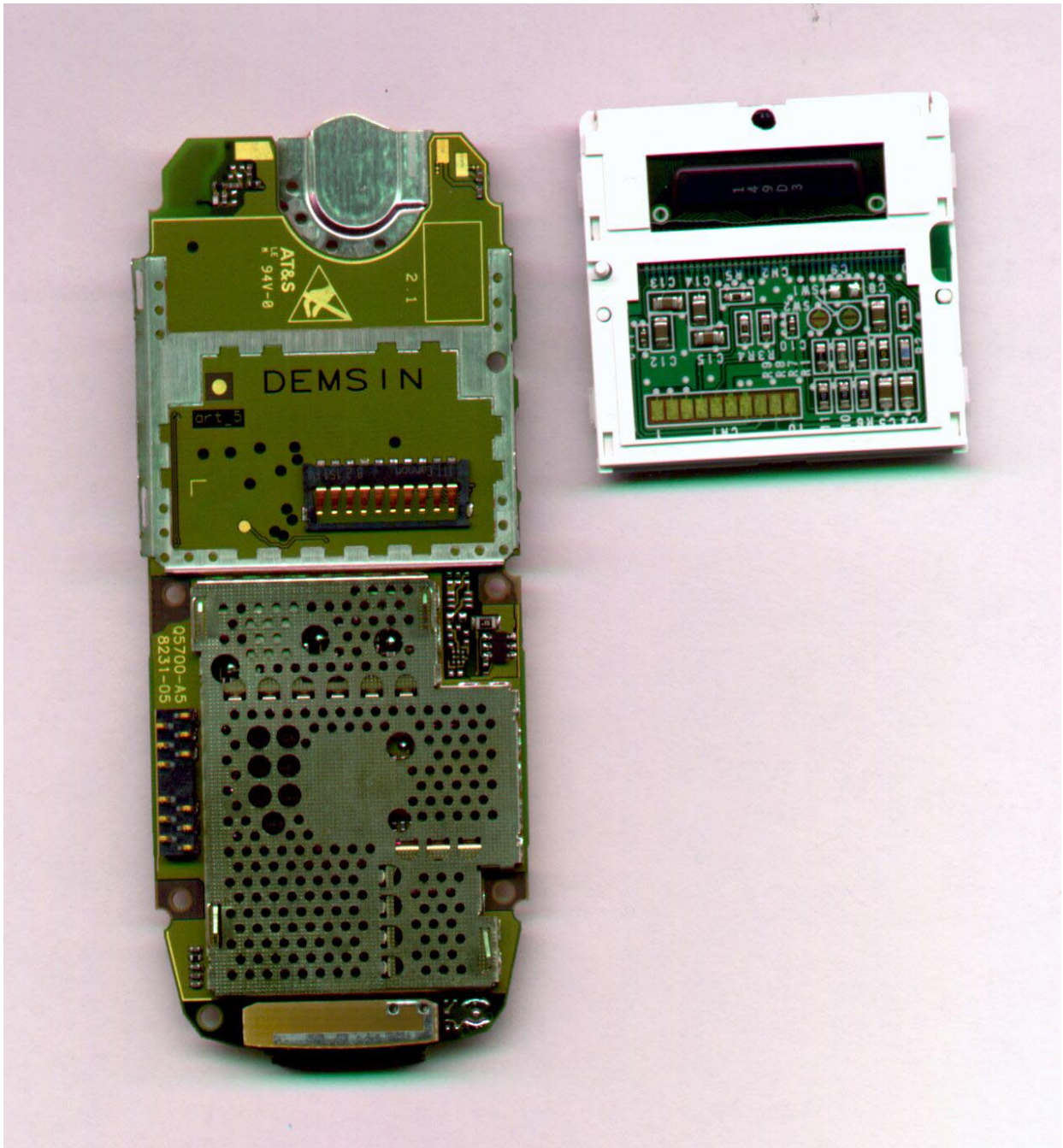


GSM Antenna



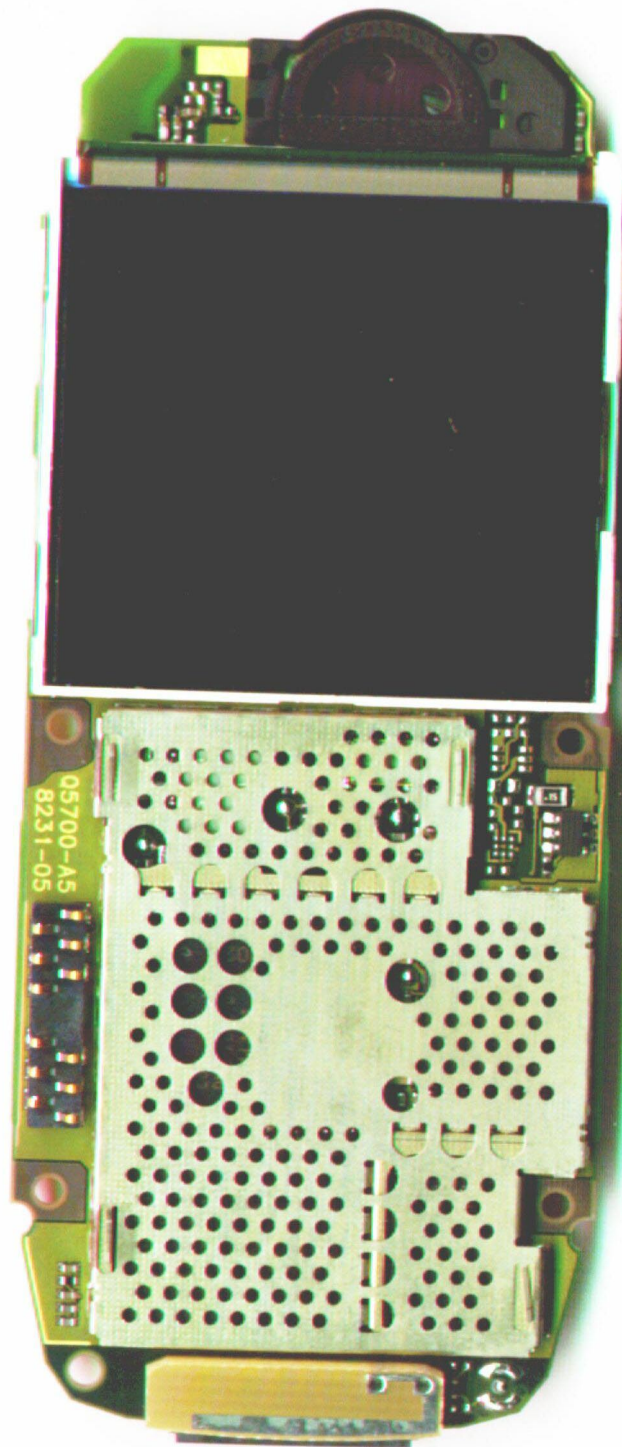


S55 Disassembly step 3

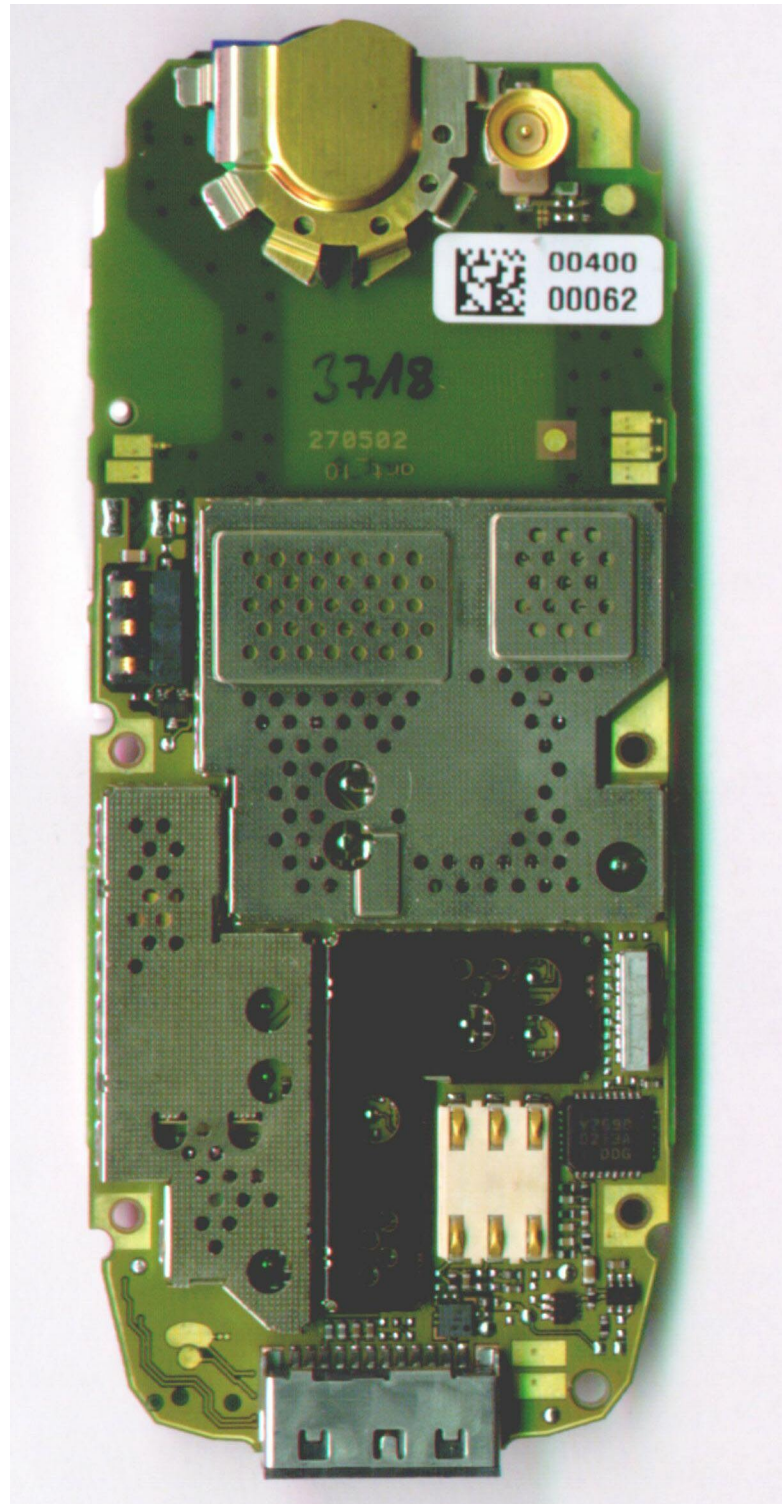


S55 Disassembly step 4



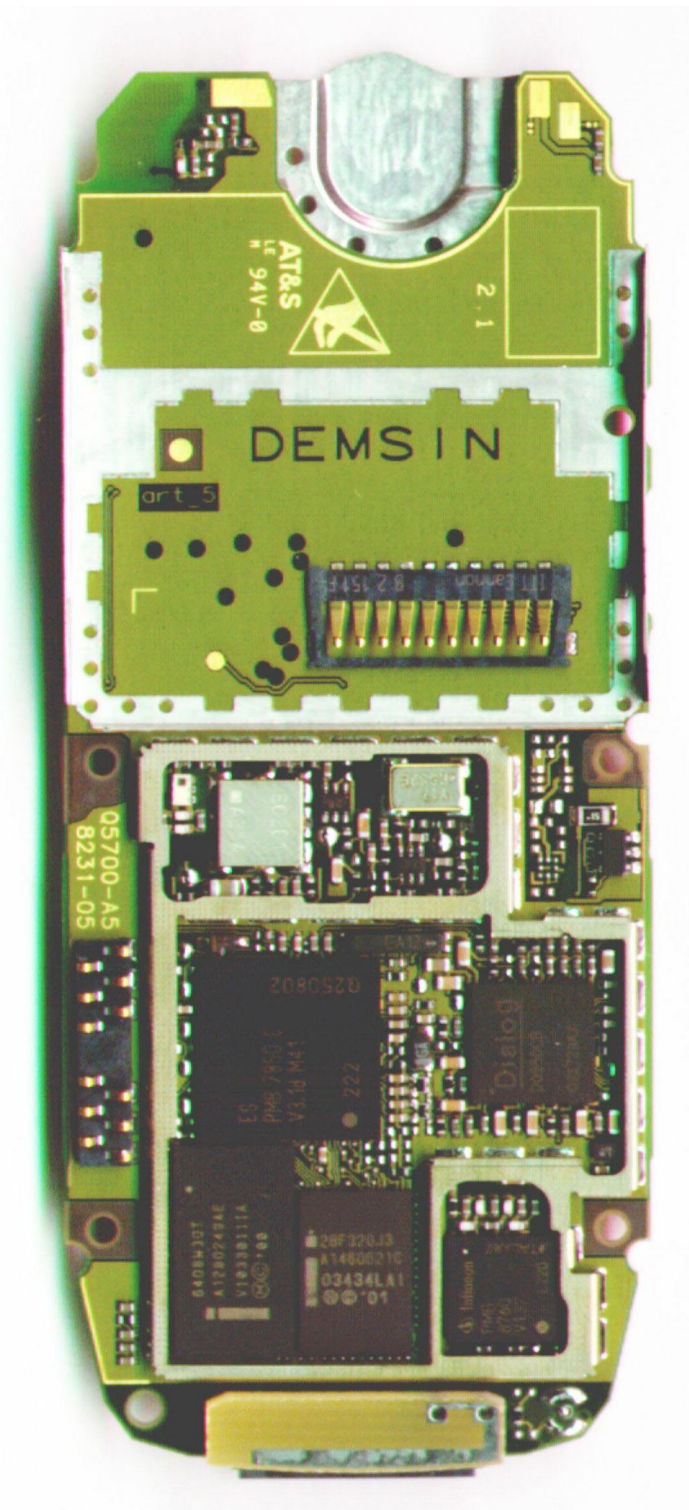


S55 Board with shielding, side 1

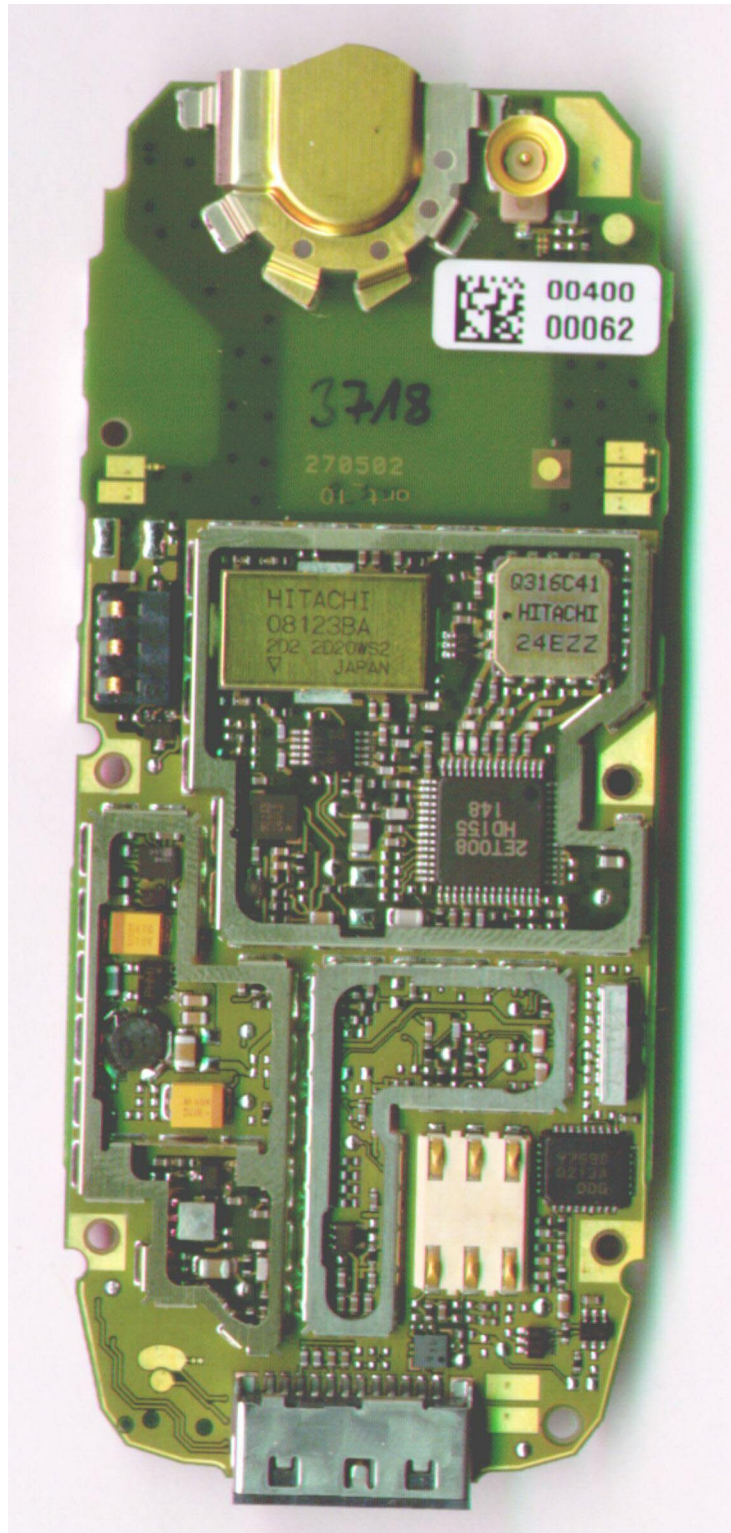


S55 Board with shielding, side 2





S55 Board without shielding and without display, side 1



S55 Board without shielding, side 2