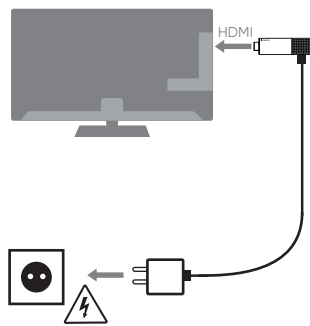
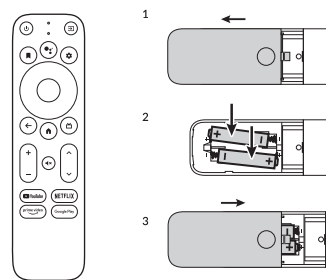
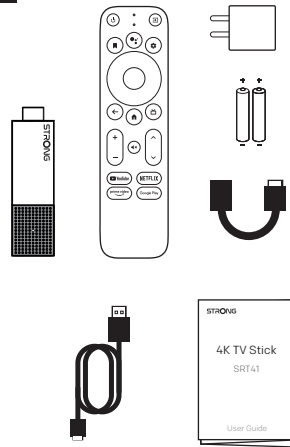
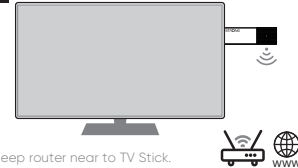


75mm

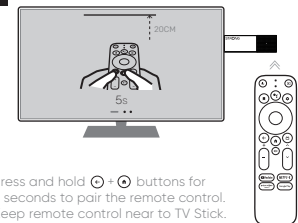
50mm



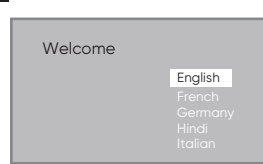
- Power on TV Stick and TV set.
- Select correct HDMI input on TV.



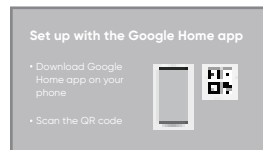
- Keep router near to TV Stick.
- Make sure internet is available.



- Press and hold + buttons for 5 seconds to pair the remote control.
- Keep remote control near to TV Stick.



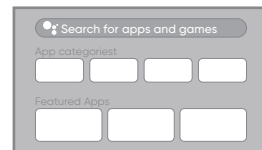
- Select language.



- Set up with Google Home app.  
Or, set up step by step using remote control.



- Press the Google Assistant button on your remote to talk to Google.



- Search for apps and games to download.

Radio	Frequency	Max. Output Power (EIRP)
Bluetooth	2.4GHz ~2.4835GHz	8.0 +/-2dBm
BLE	2.4GHz ~2.4835GHz	6.0 +/-2dBm
2.4GHz Wi-Fi	2.4GHz ~2.4835GHz	15.0 +/-2dBm
5GHz Wi-Fi	5.150GHz ~5.350GHz	14.0 +/-2dBm
	5.470GHz ~5.725GHz	
	5.725GHz ~5.850GHz	11.8 +/-2dBm

The functions of Wireless Access Systems including Radio Local Area Networks(WAS/RLANs) within the band 5150-5350 MHz for this device are restricted to indoor use only within all European Union countries (BE/BG/CZ/DK/DE/EE/IE/EL/ES/FR/HR/IT/CY/LV/LT/LU/HU/MT/NL/AT/PL/PT/RO/SI/SK/FI/SE/TR/NO/CH/IS/LI/UK/NL).

SERVICE CENTER			
AT	support_at@strong.tv 0820 400 150 (8.0-12 Min. Geben. Festnetz)	FR	support_fr@strong.tv 199 404 022 Du este între 9-18.00, d. min. 12.00, s. serv. scutit de la răspuns a 15.00, s. serv. scutit de la răspuns a 15.00
BG	support_bg@strong.tv +359 32 634451	IT	support_it@strong.tv 199 404 022 Du este între 9-18.00, d. min. 12.00, s. serv. scutit de la răspuns a 15.00, s. serv. scutit de la răspuns a 15.00
CEE	support_hu@strong.tv +36 1 445 26 10	NL	support_nl@strong.tv
DE	support_de@strong.tv 0180 501 49 91 (8.0-14 Min. deutsches Festnetz) (8.0-12 Min. min. Mobilfunknetz)	PL	support_pl@strong.tv 801 702 017
DK	support_dk@strong.tv	UA	support_ua@strong.tv +380 (44) 238 61 50

Supplied by STRONG AUSTRIA  
STRONG Ges.m.b.H  
Teinfaltstraße 8/4, Stock  
A-1010 Vienna, Austria  
Email : support\_at@strong.tv

STRONG



#### DECLARATION

Subject to alterations. In consequence of continuous research and development technical specifications, design and appearance of products may change. Google TV is the name of this device's software experience and a trademark of Google LLC. Google, Android, Android TV, Chromecast built-in and other marks are trademarks of Google LLC. Google Assistant is not available in certain languages and Countries. Availability of services varies by country and language. Google Assistant only available in English. The terms HDMI and HDMI High-Definition Multimedia Interface, and the HDMI logo are trademarks or registered trademarks of HDMI Licensing Administrator, Inc in the United States and other countries. Manufactured under license from Dolby Laboratories. Dolby Audio and the double-D symbol are registered trademarks of Dolby Laboratories. All other product names are trademarks or registered trademarks of the respective owners. © SKYWORTH 2021. All rights reserved.

#### Data Protection

Please be aware that SKYWORTH, its manufacturing partners, the application providers and the providers of the services may collect and use technical data and related information, including but not limited to technical information about this device, system and application software and peripherals. SKYWORTH, its manufacturing partners, the

application providers and the providers of the services may use such information to improve its products or to provide services or technologies to you, as long as it is in a form that does not personally identify you. Additionally, please keep in mind that some services provided - already in the device or installed by you - may request a registration for which you have to provide personal data. Beside that, please be aware that some services which are not pre-installed but can be installed may collect personal data even without providing additional warnings and that SKYWORTH can not be held liable for a possible breach of data protection by services not pre-installed.

#### Storage

Your device has been carefully checked and packed before shipping. When unpacking it, make sure that all the parts are included and keep the packaging away from children. We recommend that you keep the carton during the warranty period, to keep your device perfectly protected in the event of repair or warranty.

#### Software Description

This product includes a software that is restricted to be modified by a third party. The manufacturer reserves the right to publish software updates for maintenance or introducing new features.

#### Operating Environment

Do not install this equipment in a confined space such as a bookcase or similar unit. Do not use the set near damp, and cold areas, protect the set from overheating. Keep away from direct sunlight. Do not use the set near dust place. Do not place candles near the opening area, to avoid flammable foreign material from entering the device.

#### WARNING

Only use attachments/accessories specified or provided by the manufacturer (such as the exclusive supply adapter, battery etc.). Any other adapter may cause damage to the device. Such damage is not covered under warranty. Please refer to the information on the product enclosure for electrical and safety information before installing or operating the apparatus. To reduce the risk of fire or electric shock, do not expose this apparatus to rain or moisture. The apparatus shall not be exposed to dripping or splashing and that objects filled with liquids, such as vases, shall not be placed on apparatus. The ventilation should not be impeded by covering the ventilation openings with items, such as newspaper, table-cloths, curtains, etc. The batteries (battery pack or batteries installed) shall not be exposed to excessive heat

such as sunshine, fire or the like. The mains plug/appliance coupler/direct plug-in adapter is used as disconnect device, the disconnect device shall remain readily operable.



#### CAUTION

Danger of explosion if battery is incorrectly replaced. Replace only with the same or equivalent type. Risk of explosion if the battery is replaced by an incorrect type. Disposal of a battery into fire or a hot oven, or mechanically crushing or cutting of a battery, that can result in an explosion; Leaving a battery in an extremely high temperature surrounding environment that can result in an explosion or the leakage of flammable liquid or gas; A battery subjected to extremely low air pressure that may result in an explosion or the leakage of flammable liquid or gas.



This equipment is a Class II or double insulated electrical appliance. It has been designed in such a way that it does not require a safety connection to electrical earth. For the terminals marked with symbol of "⚡" may be of sufficient magnitude to constitute a risk of electric shock. The external

wiring connected to the terminals requires installation by an instructed person or the used of ready-made leads or cords.



arrowhead symbol within an equilateral triangle is intended to alert the user to the presence of non-insulated "dangerous voltage" within the product's enclosure that may be of sufficient magnitude to constitute a risk of electric shock. Warning: To reduce the risk of electric shock, do not remove cover (or back) as there are no user-serviceable parts inside. Refer servicing to qualified personnel. The exclamation point within an equilateral triangle is intended to alert the user to the presence of important operating and maintenance instructions in the literature accompanying the appliance.



#### WEEE Directive

Correct Disposal of this product. This marking indicates that this product should not be disposed with other household wastes throughout the EU. To prevent possible harm to the environment or human health from uncontrolled waste the sustainable reuse

of material resources. To return your used device, please use the return and collection systems or contact the retailer where the product was purchased. They can take this product for environmentally safe recycling.

#### FCC Statement

This equipment has been tested and found to comply with the limits for a Class B digital device, pursuant to part 15 of the FCC rules. These limits are designed to provide reasonable protection against harmful interference in a residential installation. This equipment generates, uses and can radiate radio frequency energy and, if not installed and used in accordance with the instructions, may cause harmful interference to radio communications. However, there is no guarantee that interference will not occur in a particular installation. If this equipment does cause harmful interference to radio or television reception, which can be determined by turning the equipment off and on, the user is encouraged to try to correct the interference by one or more of the following measures: - Reorient or relocate the receiving antenna. - Increase the separation between the equipment and receiver.

-Connect the equipment into an outlet on a circuit different from that to which the receiver is connected.  
-Consult the dealer or an experienced radio/TV technician for help.

To assure continued compliance, any changes or modifications not expressly approved by the party. Responsible for compliance could void the user's authority to operate this equipment. (Example- use only shielded interface cables when connecting to computer or peripheral devices).

This equipment complies with Part 15 of the FCC Rules. Operation is subject to the following two conditions:

- (1) This device may not cause harmful interference, and
- (2) This device must accept any interference received, including interference that may cause undesired operation.

FCC Radiation Exposure Statement:  
The equipment complies with FCC Radiation exposure limits set forth for uncontrolled environment. This equipment should be installed and operated with minimum distance 20cm between the radiator and your body.

STRONG

4K TV Stick  
SRT41

User Guide

封底Back

封面Front