



**中认信通**

CHINA CERTIFICATION ICT CO., LTD (DONGGUAN)



## SAR TEST REPORT

**Applicant: LAVA International Limited**

Address: A-56, Sector-64, Gautam Buddha Nagar, Noida Uttar Pradesh  
201301, India

**FCC ID: 2ARTX-TH868**

**Product Name: Tablet**

**TestModel: TH868**

**Multiple Models: TH868A, TH868B, TH868Y, TH868Z**

**Standard(s): 47 CFR Part 2(2.1093)**

The above equipment has been tested and found compliant with the requirement of the relative standards by China Certification ICT Co., Ltd (Dongguan)

**Report Number: CR230637471-20**

**Date Of Issue: 2023/08/28**

**Reviewed By: Karl Gong**

*Karl Gong*

Title: SAR Engineer

**Test Laboratory: China Certification ICT Co., Ltd (Dongguan)**

No. 113, Pingkang Road, Dalang Town, Dongguan,  
Guangdong, China  
Tel: +86-769-82016888

**SAR TEST RESULTS SUMMARY**

Operation Frequency Bands	Highest Reported 1g SAR (W/kg)		Limits (W/kg)
	Head SAR (Gap 0mm)	Body SAR (Gap 0mm)	
GSM 850	0.41	1.09	1.6
PCS 1900	0.18	0.85	
LTE Band 5	0.24	1.08	
LTE Band 40A	0.22	0.75	
LTE Band 40B	0.16	0.39	
LTE Band 41	0.20	1.21	
WLAN 2.4G	0.06	0.28	
U-NII-1& U-NII-2A	0.37	0.14	
U-NII-3	0.07	0.19	
Maximum Simultaneous Transmission SAR			
Items	Head SAR	Body SAR (Gap 0mm)	Limits
Sum SAR(W/kg)	0.78	1.54	1.6
SPLSR	NA	NA	0.04
EUT Received Date:	2023/07/03		
Tested Date:	2023/08/23~2023/08/25		
Tested Result:	Pass		

## Test Facility

The Test site used by China Certification ICT Co., Ltd (Dongguan) to collect test data is located on the No. 113, Pingkang Road, Dalang Town, Dongguan, Guangdong, China.

The lab has been recognized as the FCC accredited lab under the KDB 974614 D01 and is listed in the FCC Public Access Link (PAL) database, FCC Registration No. : 442868, the FCC Designation No. : CN1314.

The lab has been recognized by Innovation, Science and Economic Development Canada to test to Canadian radio equipment requirements, the CAB identifier: CN0123.

## Declarations

China Certification ICT Co., Ltd (Dongguan) is not responsible for the authenticity of any test data provided by the applicant. Data included from the applicant that may affect test results are marked with a triangle symbol “▲”. Customer model name, addresses, names, trademarks etc. are not considered data.

Unless otherwise stated the results shown in this test report refer only to the sample(s) tested.

This report cannot be reproduced except in full, without prior written approval of the Company.

This report is valid only with a valid digital signature. The digital signature may be available only under the Adobe software above version 7.0.

This report may contain data that are not covered by the accreditation scope and shall be marked with an asterisk “★”.

## CONTENTS

<b>SAR TEST RESULTS SUMMARY .....</b>	<b>2</b>
<b>TEST FACILITY .....</b>	<b>3</b>
<b>DECLARATIONS.....</b>	<b>3</b>
<b>DOCUMENT REVISION HISTORY .....</b>	<b>6</b>
<b>1. GENERAL INFORMATION .....</b>	<b>7</b>
<b>1.1 PRODUCT DESCRIPTION FOR EQUIPMENT UNDER TEST (EUT) .....</b>	<b>7</b>
<b>1.2 TEST SPECIFICATION, METHODS AND PROCEDURES .....</b>	<b>8</b>
<b>1.3 SAR LIMITS .....</b>	<b>9</b>
<b>2. SAR MEASUREMENT SYSTEM .....</b>	<b>10</b>
<b>3. EQUIPMENT LIST AND CALIBRATION .....</b>	<b>17</b>
<b>3.1 EQUIPMENTS LIST &amp; CALIBRATION INFORMATION .....</b>	<b>17</b>
<b>4. SAR MEASUREMENT SYSTEM VERIFICATION .....</b>	<b>18</b>
<b>4.1 LIQUID VERIFICATION .....</b>	<b>18</b>
<b>4.2 SYSTEM ACCURACY VERIFICATION .....</b>	<b>21</b>
<b>4.3 SAR SYSTEM VALIDATION DATA.....</b>	<b>22</b>
<b>5. EUT TEST STRATEGY AND METHODOLOGY .....</b>	<b>29</b>
<b>5.1 TEST POSITIONS FOR DEVICE OPERATING NEXT TO A PERSON'S EAR .....</b>	<b>29</b>
<b>5.2 CHEEK/TOUCH POSITION.....</b>	<b>30</b>
<b>5.3 EAR/TILT POSITION.....</b>	<b>30</b>
<b>5.4 TEST POSITIONS FOR BODY-WORN AND OTHER CONFIGURATIONS .....</b>	<b>31</b>
<b>5.5 TEST DISTANCE FOR SAR EVALUATION.....</b>	<b>32</b>
<b>5.6 SAR EVALUATION PROCEDURE .....</b>	<b>33</b>
<b>6. CONDUCTED OUTPUT POWER MEASUREMENT .....</b>	<b>34</b>
<b>6.2 DESCRIPTION OF TEST CONFIGURATION.....</b>	<b>35</b>
<b>6.3 MAXIMUM TARGET OUTPUT POWER.....</b>	<b>38</b>
<b>6.4 TEST RESULTS: .....</b>	<b>39</b>
<b>7. Standalone SAR test exclusion considerations .....</b>	<b>48</b>
<b>7.1 ANTENNA DISTANCE TO EDGE .....</b>	<b>48</b>
<b>7.2 STANDALONE SAR TEST EXCLUSION CONSIDERATIONS.....</b>	<b>48</b>
<b>7.3 STANDALONE SAR ESTIMATION: .....</b>	<b>49</b>
<b>7.4 SAR TEST EXCLUSION FOR THE EUT EDGE CONSIDERATIONS RESULT .....</b>	<b>49</b>
<b>7.4 SAR TEST EXCLUSION FOR THE EUT EDGE CONSIDERATIONS RESULT .....</b>	<b>49</b>

<b>8. SAR MEASUREMENT RESULTS .....</b>	<b>51</b>
<b>8.1 SAR TEST DATA .....</b>	<b>51</b>
<b>9. Measurement Variability .....</b>	<b>61</b>
<b>10. SAR SIMULTANEOUS TRANSMISSION DESCRIPTION .....</b>	<b>62</b>
<b>11. SAR Plots .....</b>	<b>63</b>
<b>APPENDIX A MEASUREMENT UNCERTAINTY .....</b>	<b>64</b>
<b>APPENDIX B EUT TEST POSITION PHOTOS.....</b>	<b>66</b>
<b>APPENDIX C CALIBRATION CERTIFICATES .....</b>	<b>67</b>

## DOCUMENT REVISION HISTORY

Revision Number	Report Number	Description of Revision	Date of Revision
1.0	CR230637471-20	Original Report	2023-08-28

## 1. GENERAL INFORMATION

### 1.1 Product Description for Equipment under Test (EUT)

<b>Device Type:</b>	Portable
<b>Exposure Category:</b>	Population / Uncontrolled
<b>Antenna Type(s):</b>	Internal Antenna
<b>Body-Worn Accessories:</b>	Headset
<b>Proximity Sensor:</b>	None
<b>Carrier Aggregation:</b>	None
<b>Operation modes:</b>	GSM Voice, GPRS Data, FDD-LTE, TDD-LTE, Wi-Fi and Bluetooth
<b>Frequency Band:</b>	GSM 850: 824-849 MHz(TX); 869-894 MHz(RX) PCS 1900: 1850-1910 MHz(TX); 1930-1990 MHz(RX) LTE Band 5: 824-849 MHz(TX) ; 869-894 MHz (RX) LTE Band 40A: 2305-2315 MHz(TX&RX) LTE Band 40B: 2350-2360 MHz(TX&RX) LTE Band 41: 2535-2655 MHz(TX&RX) Wi-Fi 2.4G: 2412 -2462 MHz(TX&RX) U-NII-1: 5150 -5250 MHz(TX&RX) U-NII-2A: 5250 -5350 MHz(TX&RX) U-NII-3: 5725 -5850 MHz(TX&RX) Bluetooth: 2402 -2480 MHz(TX&RX) BLE: 2402 -2480 MHz(TX&RX)
<b>Conducted RF Power:</b>	GSM 850: 32.87 dBm; PCS 1900: 30.11 dBm LTE Band 5: 23.36 dBm; LTE Band 40A: 22.45 dBm; LTE Band 40B: 21.82 dBm; LTE Band 41: 23.16 dBm; WLAN 2.4G: 16.93 dBm U-NII-1: 9.12 dBm; U-NII-2A: 9.82 dBm; U-NII-3: 7.97 dBm; Bluetooth(BDR/EDR) : 8.65 dBm BLE: -6.33 dBm
<b>Dimensions (L*W*H):</b>	223mm (L) *128mm (W) *10mm (H)
<b>Rated Input Voltage:</b>	DC 3.8V from Rechargeable Battery
<b>Serial Number:</b>	27KX-1
<b>Normal Operation:</b>	Head and Body Supported

## **1.2 Test Specification, Methods and Procedures**

The tests documented in this report were performed in accordance with FCC 47 CFR § 2.1093, IEEE 1528-2013, the following FCC Published RF exposure KDB procedures:

KDB 447498 D01 General RF Exposure Guidance v06  
KDB 616217 D04 SAR for laptop and tablets v01r02  
KDB 865664 D01 SAR Measurement 100 MHz to 6 GHz v01r04  
KDB 865664 D02 RF Exposure Reporting v01r02  
KDB 941225 D01 3G SAR Procedures v03r01  
KDB 941225 D05 SAR for LTE Devices v02r05  
KDB 248227 D01 802.11 Wi-Fi SAR v02r02

TCB Workshop April 2019: RF Exposure Procedures



### 1.3 SAR Limits

#### FCC Limit

EXPOSURE LIMITS	SAR (W/kg)	
	(General Population / Uncontrolled Exposure Environment)	(Occupational / Controlled Exposure Environment)
Spatial Average (averaged over the whole body)	0.08	0.4
Spatial Peak (averaged over any 1 g of tissue)	<b>1.60</b>	8.0
Spatial Peak (hands/wrists/feet/ankles averaged over 10 g)	4.0	20.0

Population/Uncontrolled Environments are defined as locations where there is the exposure of individual who have no knowledge or control of their exposure.

Occupational/Controlled Environments are defined as locations where there is exposure that may be incurred by people who are aware of the potential for exposure (i.e. as a result of employment or occupation).

General Population/Uncontrolled environments Spatial Peak limit 1.6W/kg for 1g SAR applied to the EUT.

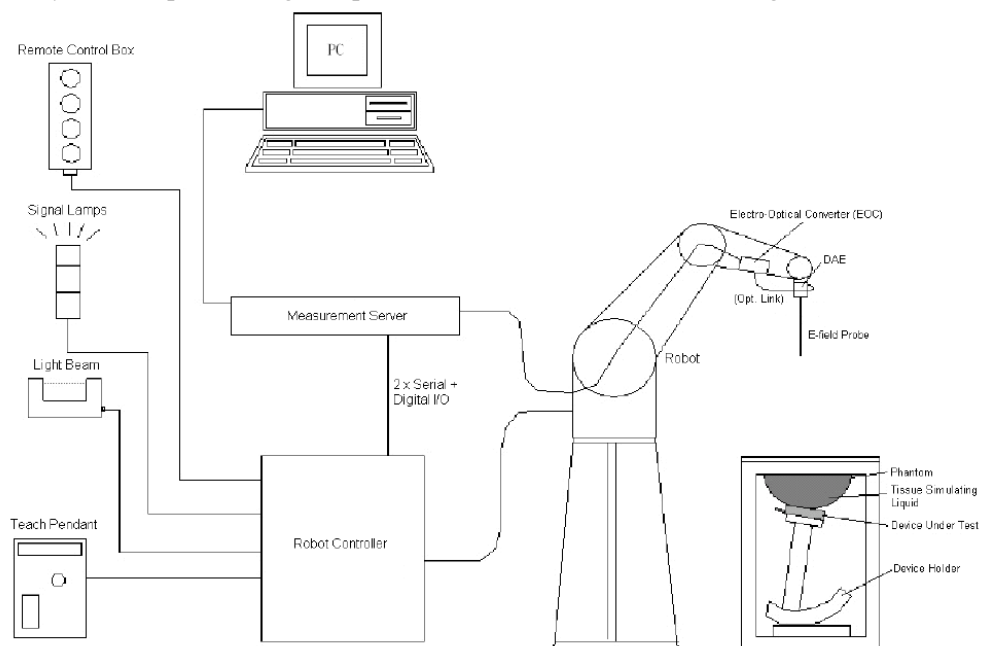
## 2. SAR MEASUREMENT SYSTEM

These measurements were performed with the automated near-field scanning system DASY5 from Schmid & Partner Engineering AG (SPEAG) which is the Fifth generation of the system shown in the figure hereinafter:



### DASY5 System Description

The DASY5 system for performing compliance tests consists of the following items:



- A standard high precision 6-axis robot with controller, teach pendant and software. An arm extension for accommodating the data acquisition electronics (DAE).
- An isotropic field probe optimized and calibrated for the targeted measurement.
- A data acquisition electronics (DAE) which performs the signal application, signal multiplexing, AD-conversion, offset measurements, mechanical surface detection, collision detection, etc. The unit is battery powered with standard or rechargeable batteries. The signal is optically transmitted to the EOC.
- The Electro-optical converter (EOC) performs the conversion from optical to electrical signals for the digital communication to the DAE. To use optical surface detection, a special version of the EOC is required. The EOC signal is transmitted to the measurement server.
- The function of the measurement server is to perform the time critical tasks such as signal filtering, control of the robot operation and fast movement interrupts.
- The Light Beam used is for probe alignment. This improves the (absolute) accuracy of the probe positioning.
- A computer running Win7 professional operating system and the DASY52 software.
- Remote control and teach pendant as well as additional circuitry for robot safety such as warning lamps, etc.
- The phantom, the device holder and other accessories according to the targeted measurement.

### **DASY5 Measurement Server**

The DASY5 measurement server is based on a PC/104 CPU board with a 400MHz Intel ULV Celeron, 128MB chip-disk and 128MB RAM. The necessary circuits for communication with the DAE4 (or DAE3) electronics box, as well as the 16 bit AD-converter system for optical detection and digital I/O interface are contained on the DASY5 I/O board, which is directly connected to the PC/104 bus of the CPU board.



The measurement server performs all real-time data evaluation of field measurements and surface detection, controls robot movements and handles safety operation. The PC operating system cannot interfere with these time critical processes. All connections are supervised by a watchdog, and disconnection of any of the cables to the measurement server will automatically disarm the robot and disable all program-controlled robot movements. Furthermore, the measurement server is equipped with an expansion port which is reserved for future applications. Please note that this expansion port does not have a standardized point out, and therefore only devices provided by SPEAG can be connected. Devices from any other supplier could seriously damage the measurement server.

### **Data Acquisition Electronics**

The data acquisition electronics (DAE4) consist of a highly sensitive electrometer-grade preamplifier with auto-zeroing, a channel and gain-switching multiplexer, a fast 16 bit AD-converter and a command decoder with a control logic unit. Transmission to the measurement server is accomplished through an optical downlink for data and status information, as well as an optical uplink for commands and the clock.

The mechanical probe mounting device includes two different sensor systems for frontal and sideways probe contacts. They are used for mechanical surface detection and probe collision detection.

The input impedance of both the DAE4 as well as of the DAE3 box is 200M $\Omega$ ; the inputs are symmetrical and floating. Common mode rejection is above 80 dB.

**EX3DV4 E-Field Probes**

<b>Frequency</b>	10 MHz to > 6 GHz Linearity: $\pm 0.2$ dB (30 MHz to 6 GHz)
<b>Directivity</b>	$\pm 0.3$ dB in TSL (rotation around probe axis) $\pm 0.5$ dB in TSL (rotation normal to probe axis)
<b>Dynamic Range</b>	10 $\mu$ W/g to > 100 mW/g Linearity: $\pm 0.2$ dB (noise: typically < 1 $\mu$ W/g)
<b>Dimensions</b>	Overall length: 337 mm (Tip: 20 mm) Tip diameter: 2.5 mm (Body: 12 mm) Typical distance from probe tip to dipole centers: 1 mm
<b>Application</b>	High precision dosimetric measurements in any exposure scenario (e.g., very strong gradient fields); the only probe that enables compliance testing for frequencies up to 6 GHz with precision of better 30%.
<b>Compatibility</b>	DASY3, DASY4, DASY52 SAR and higher, EASY4/MRI

**Calibration Frequency Points for EX3DV4 E-Field Probes SN: 7522 Calibrated: 2023/5/29**

Calibration Frequency Point(MHz)	Frequency Range(MHz)		Conversion Factor		
	From	To	X	Y	Z
750 Head	650	850	9.90	9.90	9.90
900 Head	850	1000	9.37	9.37	9.37
1750 Head	1650	1850	8.15	8.15	8.15
1900 Head	1850	2000	7.94	7.94	7.94
2300 Head	2200	2400	7.67	7.67	7.67
2450 Head	2400	2550	7.42	7.42	7.42
2600 Head	2550	2700	7.23	7.23	7.23
5250 Head	5140	5360	5.36	5.36	5.36
5500 Head	5390	5610	4.85	4.85	4.85
5750 Head	5640	5860	4.90	4.90	4.90

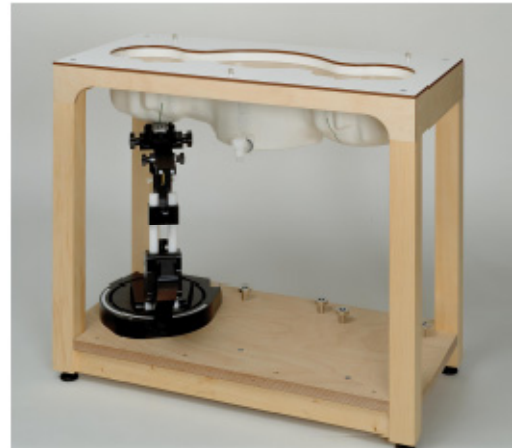
### **SAM Twin Phantom**

The SAM twin phantom is a fiberglass shell phantom with 2mm shell thickness (except the ear region, where shell thickness increases to 6 mm). The phantom has three measurement areas:

- \_ Left Head
- \_ Right Head
- \_ Flat phantom

The phantom table for the DASY systems based on the robots have the size of 100 x 50 x 85 cm (L x W x H). For easy dislocation these tables have fork lift cut outs at the bottom.

The bottom plate contains three pairs of bolts for locking the device holder. The device holder positions are adjusted to the standard measurement positions in the three sections. Only one device holder is necessary if two phantoms are used (e.g., for different liquids)



A white cover is provided to cover the phantom during off-periods to prevent water evaporation and changes in the liquid parameters. Free space scans of devices on top of this phantom cover are possible. Three reference marks are provided on the phantom counter. These reference marks are used to teach the absolute phantom position relative to the robot.

### **Robots**

The DASY5 system uses the high precision industrial robot. The robot offers the same features important for our application:

- High precision (repeatability 0.02mm)
- High reliability (industrial design)
- Low maintenance costs (virtually maintenance free due to direct drive gears; no belt drives)
- Jerk-free straight movements (brushless synchrony motors; no stepper motors)
- Low ELF interference (motor control fields shielded via the closed metallic construction shields)

The above mentioned robots are controlled by the Staubli CS8c robot controllers. All information regarding the use and maintenance of the robot arm and the robot controller is contained on the CDs delivered along with the robot. Paper manuals are available upon request direct from Staubli.

## SAR Scan Procedures

### Step 1: Power Reference Measurement

The Power Reference Measurement and Power Drift Measurements are for monitoring the power drift of the device under test in the batch process. The minimum distance of probe sensors to surface determines the closest measurement point to phantom surface. The minimum distance of probe sensors to surface is 1.4 mm. This distance cannot be smaller than the distance of sensor calibration points to probe tip as defined in the probe properties.

### Step 2: Area Scans

Area scans are defined prior to the measurement process being executed with a user defined variable spacing between each measurement point (integral) allowing low uncertainty measurements to be conducted. Scans defined for FCC applications utilize a 15mm 2 step integral, with 1.5mm interpolation used to locate the peak SAR area used for zoom scan assessments.

Where the system identifies multiple SAR peaks (which are within 25% of peak value) the system will provide the user with the option of assessing each peak location individually for zoom scan averaging.

Area Scan Parameters extracted from KDB 865664 D01 SAR Measurement 100 MHz to 6 GHz

	$\leq 3$ GHz	$> 3$ GHz
Maximum distance from closest measurement point (geometric center of probe sensors) to phantom surface	5 mm $\pm$ 1 mm	$\frac{1}{2} \cdot \delta \cdot \ln(2)$ mm $\pm$ 0.5 mm
Maximum probe angle from probe axis to phantom surface normal at the measurement location	$30^\circ \pm 1^\circ$	$20^\circ \pm 1^\circ$
Maximum area scan spatial resolution: $\Delta x_{Area}$ , $\Delta y_{Area}$	$\leq 2$ GHz: $\leq 15$ mm 2 – 3 GHz: $\leq 12$ mm	3 – 4 GHz: $\leq 12$ mm 4 – 6 GHz: $\leq 10$ mm
	When the x or y dimension of the test device, in the measurement plane orientation, is smaller than the above, the measurement resolution must be $\leq$ the corresponding x or y dimension of the test device with at least one measurement point on the test device.	

### Step 3: Zoom Scan (Cube Scan Averaging)

The averaging zoom scan volume utilized in the DASY5 software is in the shape of a cube and the side dimension of a 1 g or 10 g mass is dependent on the density of the liquid representing the simulated tissue. A density of 1000 kg/m<sup>3</sup> is used to represent the head and body tissue density and not the phantom liquid density, in order to be consistent with the definition of the liquid dielectric properties, i.e. the side length of the 1g cube is 5mm, with the side length of the 10g cube is 21.5mm.

Zoom Scan Parameters extracted from KDB 865664 D01 SAR Measurement 100 MHz to 6 GHz

			≤ 3 GHz	> 3 GHz
Maximum zoom scan spatial resolution: $\Delta x_{\text{Zoom}}$ , $\Delta y_{\text{Zoom}}$			$\leq 2$ GHz: $\leq 8$ mm 2 – 3 GHz: $\leq 5$ mm*	3 – 4 GHz: $\leq 5$ mm* 4 – 6 GHz: $\leq 4$ mm*
Maximum zoom scan spatial resolution, normal to phantom surface	uniform grid: $\Delta z_{\text{Zoom}}(n)$		$\leq 5$ mm	3 – 4 GHz: $\leq 4$ mm 4 – 5 GHz: $\leq 3$ mm 5 – 6 GHz: $\leq 2$ mm
	graded grid	$\Delta z_{\text{Zoom}}(1)$ : between 1 <sup>st</sup> two points closest to phantom surface	$\leq 4$ mm	3 – 4 GHz: $\leq 3$ mm 4 – 5 GHz: $\leq 2.5$ mm 5 – 6 GHz: $\leq 2$ mm
		$\Delta z_{\text{Zoom}}(n>1)$ : between subsequent points	$\leq 1.5 \cdot \Delta z_{\text{Zoom}}(n-1)$ mm	
Minimum zoom scan volume	x, y, z		$\geq 30$ mm	3 – 4 GHz: $\geq 28$ mm 4 – 5 GHz: $\geq 25$ mm 5 – 6 GHz: $\geq 22$ mm
Note: $\delta$ is the penetration depth of a plane-wave at normal incidence to the tissue medium; see IEEE Std 1528-2013 for details.				
* When zoom scan is required and the <i>reported</i> SAR from the <i>area scan based 1-g SAR estimation</i> procedures of KDB Publication 447498 is $\leq 1.4$ W/kg, $\leq 8$ mm, $\leq 7$ mm and $\leq 5$ mm zoom scan resolution may be applied, respectively, for 2 GHz to 3 GHz, 3 GHz to 4 GHz and 4 GHz to 6 GHz.				

### Step 4: Power Drift Measurement

The Power Drift Measurement measures the field at the same location as the most recent power reference measurement within the same procedure, and with the same settings. The Power Drift Measurement gives the field difference in dB from the reading conducted within the last Power Reference Measurement. This allows a user to monitor the power drift of the device under test within a batch process. The measurement procedure is the same as Step 1.

When the cube intersects with the surface of the phantom, it is oriented so that 3 vertices touch the surface of the shell or the center of a face is tangent to the surface. The face of the cube closest to the surface is modified in order to conform to the tangent surface.

The zoom scan integer steps can be user defined so as to reduce uncertainty, but normal practice for typical test applications (including FCC) utilize a physical step of 7 x 7 x 7 (5mmx5mmx5mm) providing a volume of 30 mm in the X & Y & Z axis.



## Tissue Dielectric Parameters for Head and Body Phantoms

The head tissue dielectric parameters recommended by the IEC 62209-1:2016

### Recommended Tissue Dielectric Parameters for Head liquid

**Table A.3 – Dielectric properties of the head tissue-equivalent liquid**

Frequency MHz	Relative permittivity $\epsilon_r$	Conductivity ( $\sigma$ ) S/m
300	45,3	0,87
450	43,5	0,87
<i>750</i>	<i>41,9</i>	<i>0,89</i>
835	41,5	0,90
900	41,5	0,97
1 450	40,5	1,20
<i>1 500</i>	<i>40,4</i>	<i>1,23</i>
<i>1 640</i>	<i>40,2</i>	<i>1,31</i>
<i>1 750</i>	<i>40,1</i>	<i>1,37</i>
1 800	40,0	1,40
1 900	40,0	1,40
2 000	40,0	1,40
<i>2 100</i>	<i>39,8</i>	<i>1,49</i>
<i>2 300</i>	<i>39,5</i>	<i>1,67</i>
2 450	39,2	1,80
<i>2 600</i>	<i>39,0</i>	<i>1,96</i>
3 000	38,5	2,40
<i>3 500</i>	<i>37,9</i>	<i>2,91</i>
<i>4 000</i>	<i>37,4</i>	<i>3,43</i>
<i>4 500</i>	<i>36,8</i>	<i>3,94</i>
<i>5 000</i>	<i>36,2</i>	<i>4,45</i>
<i>5 200</i>	<i>36,0</i>	<i>4,66</i>
<i>5 400</i>	<i>35,8</i>	<i>4,86</i>
<i>5 600</i>	<i>35,5</i>	<i>5,07</i>
<i>5 800</i>	<i>35,3</i>	<i>5,27</i>
<i>6 000</i>	<i>35,1</i>	<i>5,48</i>

NOTE For convenience, permittivity and conductivity values at those frequencies which are not part of the original data provided by Drossos et al. [33] or the extension to 5 800 MHz are provided (i.e. the values shown *in italics*). These values were linearly interpolated between the values in this table that are immediately above and below these values, except the values at 6 000 MHz that were linearly extrapolated from the values at 3 000 MHz and 5 800 MHz.



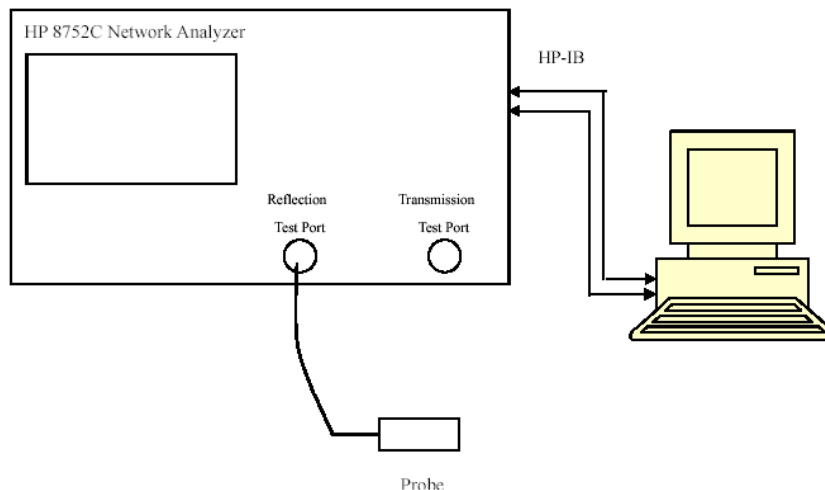
### 3. EQUIPMENT LIST AND CALIBRATION

#### 3.1 Equipments List & Calibration Information

DASY5 Test Software	DASY52.8	N/A	NCR	NCR
DASY5 Measurement Server	DASY5 5.0.28	1123	NCR	NCR
Data Acquisition Electronics	DAE4	1354	2022/10/31	2023/10/30
E-Field Probe	EX3DV4	7522	2023/5/29	2024/5/28
Mounting Device	MD4HHTV5	BJPCTC0152	NCR	NCR
Twin SAM	Twin SAM V5.0	1470	NCR	NCR
Dipole, 750 MHz	D750V3	1230	2023/3/24	2026/3/23
Dipole, 1900 MHz	D1900V2	5d251	2023/3/27	2026/3/26
Dipole, 2300 MHz	D2300V2	1135	2023/3/27	2026/3/26
Dipole, 2450 MHz	D2450V2	1102	2023/3/27	2026/3/26
Dipole, 2600 MHz	D2600V2	1206	2023/3/27	2026/3/26
Dipole,5GHz	D5GHzV2	1246	2022/11/1	2025/10/31
Simulated Tissue Liquid Head(500-9500 MHz)	HBBL600-10000V6	220420-2	Each Time	/
Network Analyzer	8753B	2828A00170	2022/10/24	2023/10/23
Dielectric assessment kit	1253	SM DAK 040 CA	NCR	NCR
MXG Vector Signal Generator	N5182B	MY51350144	2023/3/31	2024/3/30
Power Meter	EPM-441A/8484A	GB37481494	2023/3/31	2024/3/30
USB Wideband Power Sensor	U2021XA	MY54080015	2023/3/31	2024/3/30
Power Amplifier	ZVA-183-S+	5969001149	NCR	NCR
Directional Coupler	441493	520Z	NCR	NCR
Attenuator	20dB, 100W	LN749	NCR	NCR
Attenuator	6dB, 150W	2754	NCR	NCR
Universal Radio Communication Tester	CMU200	110 825	2023/3/31	2024/3/30
Wideband Radio Communication Tester	CMW500	149218	2023/3/31	2024/3/30
Spectrum Analyzer	FSV40	101943	2023/3/31	2024/3/30

## 4. SAR MEASUREMENT SYSTEM VERIFICATION

### 4.1 Liquid Verification



Liquid Verification Setup Block Diagram

### Liquid Verification Results

Frequency (MHz)	Liquid Type	Liquid Parameter		Target Value		Delta (%)		Tolerance (%)
		$\epsilon_r$	$\sigma$ (S/m)	$\epsilon_r$	$\sigma$ (S/m)	$\Delta\epsilon_r$	$\Delta\sigma$ (S/m)	
750	Simulated Tissue Liquid Head	42.463	0.897	41.90	0.89	1.34	0.79	$\pm 5$
824.2	Simulated Tissue Liquid Head	41.897	0.904	41.55	0.90	0.84	0.44	$\pm 5$
829	Simulated Tissue Liquid Head	41.206	0.918	41.53	0.90	-0.78	2	$\pm 5$
835	Simulated Tissue Liquid Head	41.099	0.919	41.50	0.90	-0.97	2.11	$\pm 5$
836.5	Simulated Tissue Liquid Head	41.317	0.925	41.50	0.90	-0.44	2.78	$\pm 5$
836.6	Simulated Tissue Liquid Head	41.323	0.924	41.50	0.90	-0.43	2.67	$\pm 5$
844	Simulated Tissue Liquid Head	41.551	0.937	41.50	0.91	0.12	2.97	$\pm 5$
848.8	Simulated Tissue Liquid Head	41.584	0.933	41.50	0.91	0.2	2.53	$\pm 5$

\*Liquid Verification above was performed on 2023/08/23.

Frequency (MHz)	Liquid Type	Liquid Parameter		Target Value		Delta (%)		Tolerance (%)
		$\epsilon_r$	$\sigma$ (S/m)	$\epsilon_r$	$\sigma$ (S/m)	$\Delta\epsilon_r$	$\Delta\sigma$ (S/m)	
1850.2	Simulated Tissue Liquid Head	40.124	1.405	40.00	1.40	0.31	0.36	$\pm 5$
1880	Simulated Tissue Liquid Head	40.324	1.414	40.00	1.40	0.81	1	$\pm 5$
1900	Simulated Tissue Liquid Head	39.571	1.418	40.00	1.40	-1.07	1.29	$\pm 5$
1909.8	Simulated Tissue Liquid Head	39.071	1.431	40.00	1.40	-2.32	2.21	$\pm 5$

\*Liquid Verification above was performed on 2023/08/23.

Frequency (MHz)	Liquid Type	Liquid Parameter		Target Value		Delta (%)		Tolerance (%)
		$\epsilon_r$	$\sigma$ (S/m)	$\epsilon_r$	$\sigma$ (S/m)	$\Delta\epsilon_r$	$\Delta\sigma$ (S/m)	
2300	Simulated Tissue Liquid Head	39.711	1.632	39.50	1.67	0.53	-2.28	$\pm 5$
2310	Simulated Tissue Liquid Head	40.216	1.715	39.48	1.68	1.86	2.08	$\pm 5$
2355	Simulated Tissue Liquid Head	40.116	1.753	39.39	1.72	1.84	1.92	$\pm 5$

\*Liquid Verification above was performed on 2023/08/24.

Frequency (MHz)	Liquid Type	Liquid Parameter		Target Value		Delta (%)		Tolerance (%)
		$\epsilon_r$	$\sigma$ (S/m)	$\epsilon_r$	$\sigma$ (S/m)	$\Delta\epsilon_r$	$\Delta\sigma$ (S/m)	
2412	Simulated Tissue Liquid Head	37.919	1.806	39.28	1.77	-3.46	2.03	$\pm 5$
2437	Simulated Tissue Liquid Head	38.203	1.842	39.23	1.79	-2.62	2.91	$\pm 5$
2450	Simulated Tissue Liquid Head	38.308	1.858	39.20	1.80	-2.28	3.22	$\pm 5$
2462	Simulated Tissue Liquid Head	38.284	1.863	39.18	1.81	-2.29	2.93	$\pm 5$

\*Liquid Verification above was performed on 2023/08/24.

Frequency (MHz)	Liquid Type	Liquid Parameter		Target Value		Delta (%)		Tolerance (%)
		$\epsilon_r$	$\sigma$ (S/m)	$\epsilon_r$	$\sigma$ (S/m)	$\Delta\epsilon_r$	$\Delta\sigma$ (S/m)	
2545	Simulated Tissue Liquid Head	39.478	1.916	39.07	1.90	1.04	0.84	$\pm 5$
2570	Simulated Tissue Liquid Head	39.542	1.951	39.04	1.93	1.29	1.09	$\pm 5$
2595	Simulated Tissue Liquid Head	39.635	1.938	39.01	1.95	1.6	-0.62	$\pm 5$
2600	Simulated Tissue Liquid Head	39.745	1.977	39.00	1.96	1.91	0.87	$\pm 5$
2620	Simulated Tissue Liquid Head	39.778	2.015	38.98	1.98	2.05	1.77	$\pm 5$
2645	Simulated Tissue Liquid Head	39.309	2.032	38.94	2.01	0.95	1.09	$\pm 5$

\*Liquid Verification above was performed on 2023/08/25.

Frequency (MHz)	Liquid Type	Liquid Parameter		Target Value		Delta (%)		Tolerance (%)
		$\epsilon_r$	$\sigma$ (S/m)	$\epsilon_r$	$\sigma$ (S/m)	$\Delta\epsilon_r$	$\Delta\sigma$	
5250	Simulated Tissue Liquid Head	35.281	4.481	35.95	4.71	-1.86	-4.86	$\pm 5$
5260	Simulated Tissue Liquid Head	35.341	4.495	35.94	4.72	-1.67	-4.77	$\pm 5$
5280	Simulated Tissue Liquid Head	35.517	4.516	35.92	4.74	-1.12	-4.73	$\pm 5$
5320	Simulated Tissue Liquid Head	35.227	4.572	35.88	4.78	-1.82	-4.35	$\pm 5$

\*Liquid Verification above was performed on 2023/08/24.

Frequency (MHz)	Liquid Type	Liquid Parameter		Target Value		Delta (%)		Tolerance (%)
		$\epsilon_r$	$\sigma$ (S/m)	$\epsilon_r$	$\sigma$ (S/m)	$\Delta\epsilon_r$	$\Delta\sigma$	
5745	Simulated Tissue Liquid Head	34.701	4.987	35.36	5.22	-1.86	-4.46	$\pm 5$
5750	Simulated Tissue Liquid Head	34.733	5.023	35.35	5.22	-1.75	-3.77	$\pm 5$
5785	Simulated Tissue Liquid Head	34.622	5.054	35.32	5.26	-1.98	-3.92	$\pm 5$
5825	Simulated Tissue Liquid Head	34.711	5.053	35.28	5.30	-1.61	-4.66	$\pm 5$

\*Liquid Verification above was performed on 2023/08/25.

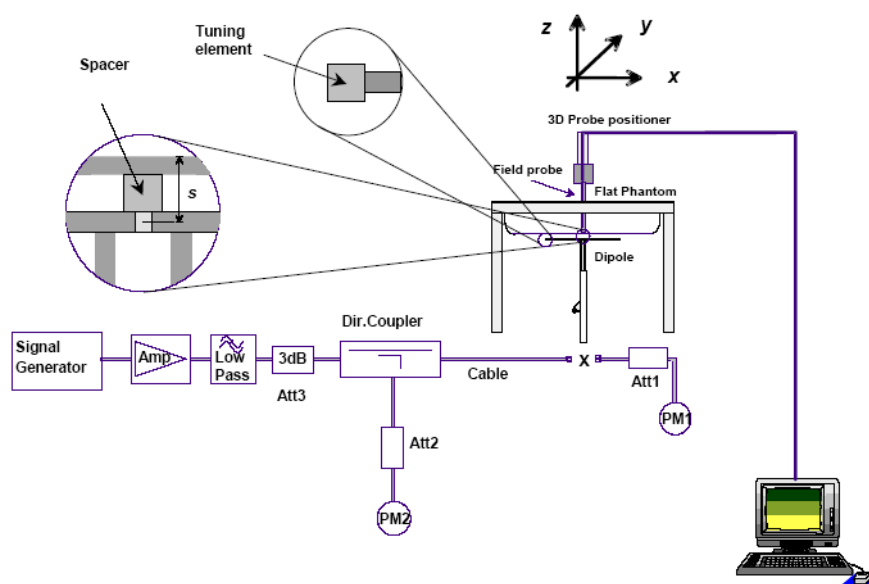
## 4.2 System Accuracy Verification

Prior to the assessment, the system validation kit was used to test whether the system was operating within its specifications of  $\pm 10\%$ . The validation results are tabulated below. And also the corresponding SAR plot is attached as well in the SAR plots files.

The spacing distances in the **System Verification Setup Block Diagram** is given by the following:

- $s = 15 \text{ mm} \pm 0,2 \text{ mm}$  for  $300 \text{ MHz} \leq f \leq 1\,000 \text{ MHz}$ ;
- $s = 10 \text{ mm} \pm 0,2 \text{ mm}$  for  $1\,000 \text{ MHz} < f \leq 3\,000 \text{ MHz}$ ;
- $s = 10 \text{ mm} \pm 0,2 \text{ mm}$  for  $3\,000 \text{ MHz} < f \leq 6\,000 \text{ MHz}$ .

### System Verification Setup Block Diagram



### System Accuracy Check Results

Date	Frequency Band	Liquid Type	Input Power (mW)	Measured SAR (W/kg)	Normalized to 1W (W/kg)	Target Value (W/kg)	Delta (%)	Tolerance (%)
2023/08/23	750	Simulated Tissue Liquid Head	100	1g 0.857	8.57	8.49	0.94	$\pm 10$
2023/08/23	1900	Simulated Tissue Liquid Head	100	1g 3.93	39.3	38.9	1.03	$\pm 10$
2023/08/24	2300	Simulated Tissue Liquid Head	100	1g 5.03	50.3	48.2	4.36	$\pm 10$
2023/08/24	2450	Simulated Tissue Liquid Head	100	1g 5.25	52.5	50.9	3.14	$\pm 10$
2023/08/25	2600	Simulated Tissue Liquid Head	100	1g 5.76	57.6	56	2.86	$\pm 10$
2023/08/24	5250	Simulated Tissue Liquid Head	100	1g 7.87	78.7	77.5	1.55	$\pm 10$
2023/08/25	5750	Simulated Tissue Liquid Head	100	1g 7.88	78.8	78.4	0.51	$\pm 10$

\*The SAR values above are normalized to 1 Watt forward power.

### 4.3 SAR SYSTEM VALIDATION DATA

#### System Performance 750 MHz

**DUT: D750V3; Type: 750 MHz; Serial: 1230**

Communication System: CW; Frequency: 750 MHz; Duty Cycle: 1:1

Medium parameters used:  $f = 750$  MHz;  $\sigma = 0.897$  S/m;  $\epsilon_r = 42.463$ ;  $\rho = 1000$  kg/m<sup>3</sup>

Phantom section: Flat Section

DASY5 Configuration:

- Probe: EX3DV4 - SN7522; ConvF(9.9, 9.9, 9.9) @ 750 MHz; Calibrated: 2023/5/29
- Sensor-Surface: 1.4mm (Mechanical Surface Detection)
- Electronics: DAE4 Sn1354; Calibrated: 2022/10/31
- Phantom: Twin SAM V5.0; Type: QD000P40CD; Serial: TP:1470
- Measurement SW: DASY52, Version 52.10 (2); SEMCAD X Version 14.6.12 (7470)

**Area Scan (7x14x1):** Measurement grid: dx=15mm, dy=15mm

Maximum value of SAR (measured) = 1.36 W/kg

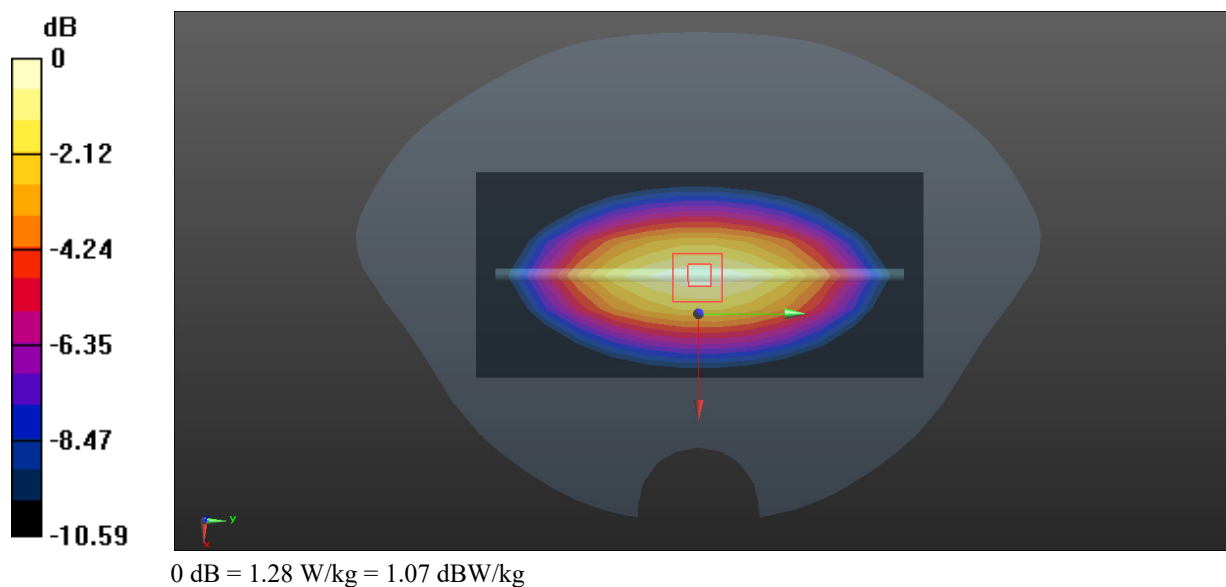
**Zoom Scan (5x5x7)/Cube 0:** Measurement grid: dx=8mm, dy=8mm, dz=5mm

Reference Value = 36.42 V/m; Power Drift = 0.04 dB

Peak SAR (extrapolated) = 1.43 W/kg

**SAR(1 g) = 0.857 W/kg; SAR(10 g) = 0.541 W/kg**

Maximum value of SAR (measured) = 1.28 W/kg



**System Performance 1900MHz****DUT: D1900V2; Type: 1900 MHz; Serial: 5d251**

Communication System: CW; Frequency: 1900 MHz; Duty Cycle: 1:1

Medium parameters used:  $f = 1900$  MHz;  $\sigma = 1.418$  S/m;  $\epsilon_r = 39.571$ ;  $\rho = 1000$  kg/m<sup>3</sup>

Phantom section: Flat Section

DASY5 Configuration:

- Probe: EX3DV4 - SN7522; ConvF(7.94, 7.94, 7.94)@ 1900 MHz; Calibrated: 2023/5/29
- Sensor-Surface: 1.4mm (Mechanical Surface Detection)
- Electronics: DAE4 Sn1354; Calibrated: 2022/10/31
- Phantom: Twin SAM V5.0; Type: QD000P40CC; Serial: TP:1470
- Measurement SW: DASY52, Version 52.8 (7); SEMCAD X Version 14.6.12 (7470)

**Area Scan (7x8x1):** Measurement grid: dx=15mm, dy=15mm

Maximum value of SAR (measured) = 6.83 W/kg

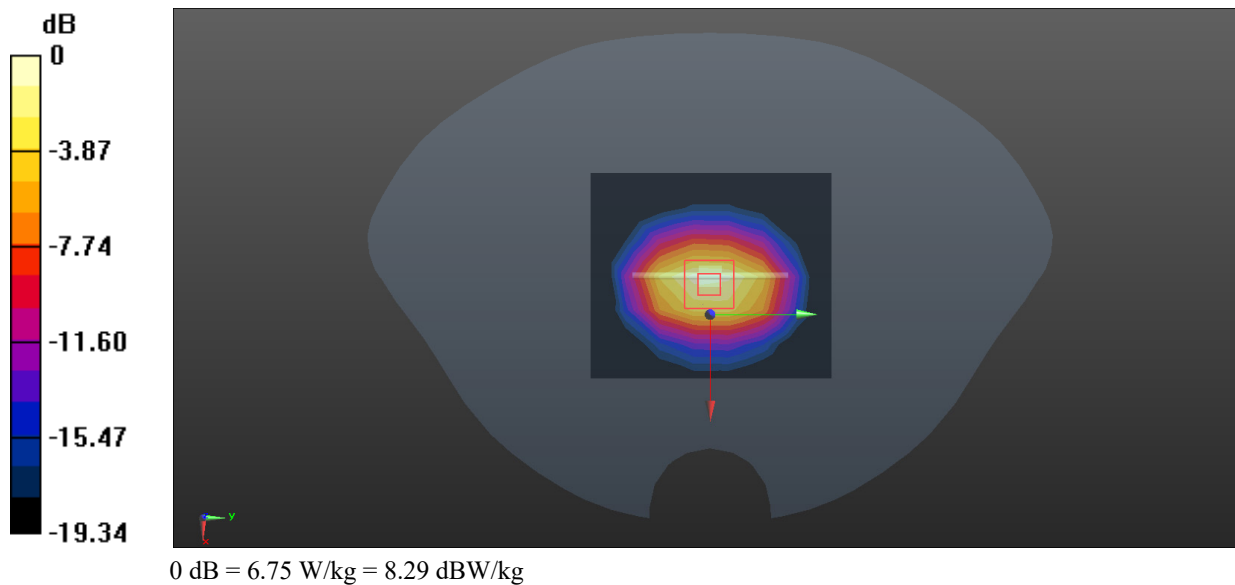
**Zoom Scan (5x5x7)/Cube 0:** Measurement grid: dx=8mm, dy=8mm, dz=5mm

Reference Value = 45.93 V/m; Power Drift = 0.04 dB

Peak SAR (extrapolated) = 8.07 W/kg

**SAR(1 g) = 3.93 W/kg; SAR(10 g) = 2.12 W/kg**

Maximum value of SAR (measured) = 6.75 W/kg



**System Performance 2300MHz****DUT: D2300V2; Type: 2300 MHz; Serial: 1135**

Communication System: CW; Frequency: 2300 MHz; Duty Cycle: 1:1

Medium parameters used:  $f = 2300$  MHz;  $\sigma = 1.632$  S/m;  $\epsilon_r = 39.711$ ;  $\rho = 1000$  kg/m<sup>3</sup>

Phantom section: Flat Section

DASY5 Configuration:

- Probe: EX3DV4 - SN7522; ConvF(7.67, 7.67, 7.67) @ 2300 MHz; Calibrated: 2023/5/29
- Sensor-Surface: 1.4mm (Mechanical Surface Detection)
- Electronics: DAE4 Sn1354; Calibrated: 2022/10/31
- Phantom: Twin SAM V5.0; Type: QD000P40CD; Serial: TP:1470
- Measurement SW: DASY52, Version 52.10 (2); SEMCAD X Version 14.6.12 (7470)

**Area Scan (7x10x1):** Measurement grid: dx=12mm, dy=12mm

Maximum value of SAR (Measured) = 8.16 W/kg

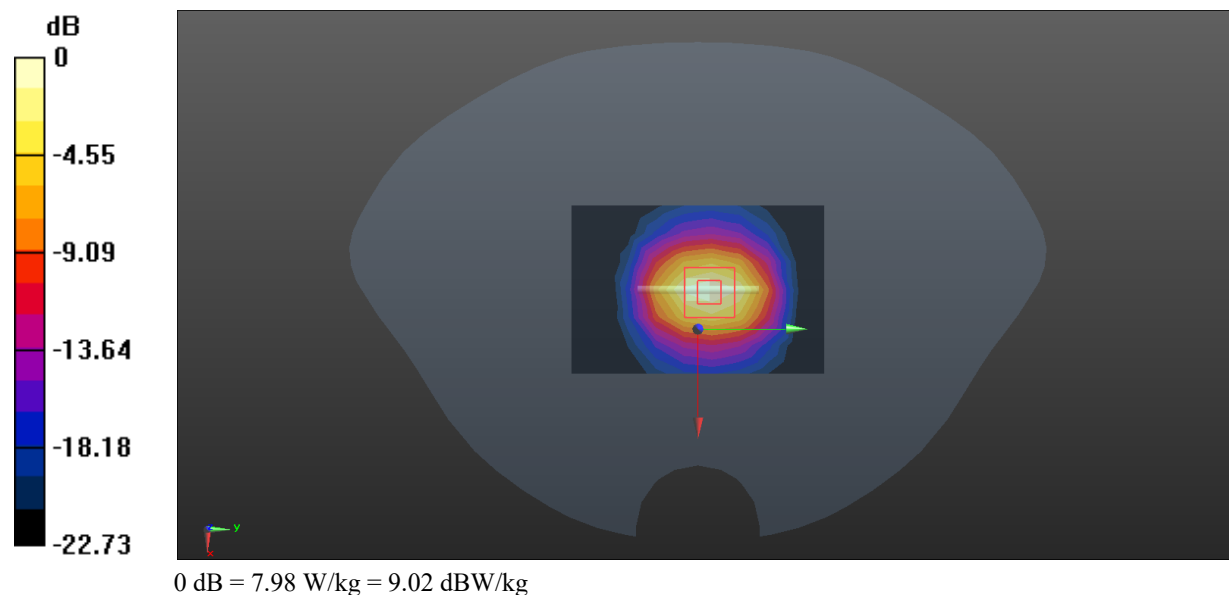
**Zoom Scan (7x7x7)/Cube 0:** Measurement grid: dx=5mm, dy=5mm, dz=5mm

Reference Value = 52.75 V/m; Power Drift = -0.09 dB

Peak SAR (extrapolated) = 10.6 W/kg

**SAR(1 g) = 5.03 W/kg; SAR(10 g) = 2.42 W/kg**

Maximum value of SAR (measured) = 7.98 W/kg





**System Performance 2450MHz****DUT: D2450V2; Type: 2450 MHz; Serial: 1102**

Communication System: CW; Frequency: 2450 MHz; Duty Cycle: 1:1

Medium parameters used:  $f = 2450$  MHz;  $\sigma = 1.858$  S/m;  $\epsilon_r = 38.308$ ;  $\rho = 1000$  kg/m<sup>3</sup>

Phantom section: Flat Section

DASY5 Configuration:

- Probe: EX3DV4 - SN7522; ConvF(7.42, 7.42, 7.42) @ 2450 MHz; Calibrated: 2023/5/29
- Sensor-Surface: 1.4mm (Mechanical Surface Detection)
- Electronics: DAE4 Sn1354; Calibrated: 2022/10/31
- Phantom: Twin SAM V5.0; Type: QD000P40CD; Serial: TP:1470
- Measurement SW: DASY52, Version 52.10 (2); SEMCAD X Version 14.6.12 (7470)

**Area Scan (6x7x1):** Measurement grid: dx=12mm, dy=12mm

Maximum value of SAR (Measured) = 9.16 W/kg

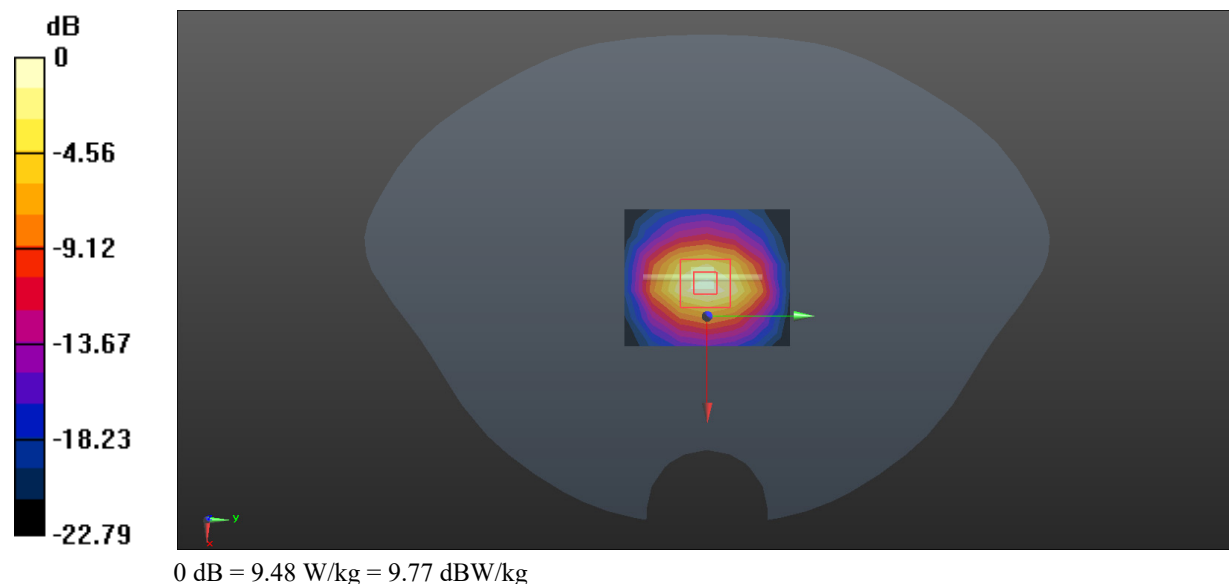
**Zoom Scan (7x7x7)/Cube 0:** Measurement grid: dx=5mm, dy=5mm, dz=5mm

Reference Value = 54.95 V/m; Power Drift = -0.12 dB

Peak SAR (extrapolated) = 11.1 W/kg

**SAR(1 g) = 5.25 W/kg; SAR(10 g) = 2.48 W/kg**

Maximum value of SAR (measured) = 9.48 W/kg



**System Performance 2600MHz****DUT: D2600V2; Type: 2600 MHz; Serial: 1206**

Communication System: CW; Frequency: 2600 MHz; Duty Cycle: 1:1

Medium parameters used:  $f = 2600$  MHz;  $\sigma = 1.977$  S/m;  $\epsilon_r = 39.745$ ;  $\rho = 1000$  kg/m<sup>3</sup>

Phantom section: Flat Section

DASY5 Configuration:

- Probe: EX3DV4 - SN7522; ConvF(7.23, 7.23, 7.23) @ 2600 MHz; Calibrated: 2023/5/29
- Sensor-Surface: 1.4mm (Mechanical Surface Detection)
- Electronics: DAE4 Sn1354; Calibrated: 2022/10/31
- Phantom: Twin SAM V5.0; Type: QD000P40CC; Serial: TP:1470
- Measurement SW: DASY52, Version 52.10 (2); SEMCAD X Version 14.6.12 (7470)

**Area Scan (8x9x1):** Measurement grid: dx=12 mm, dy=12mm

Maximum value of SAR (Measured) = 10.1 W/kg

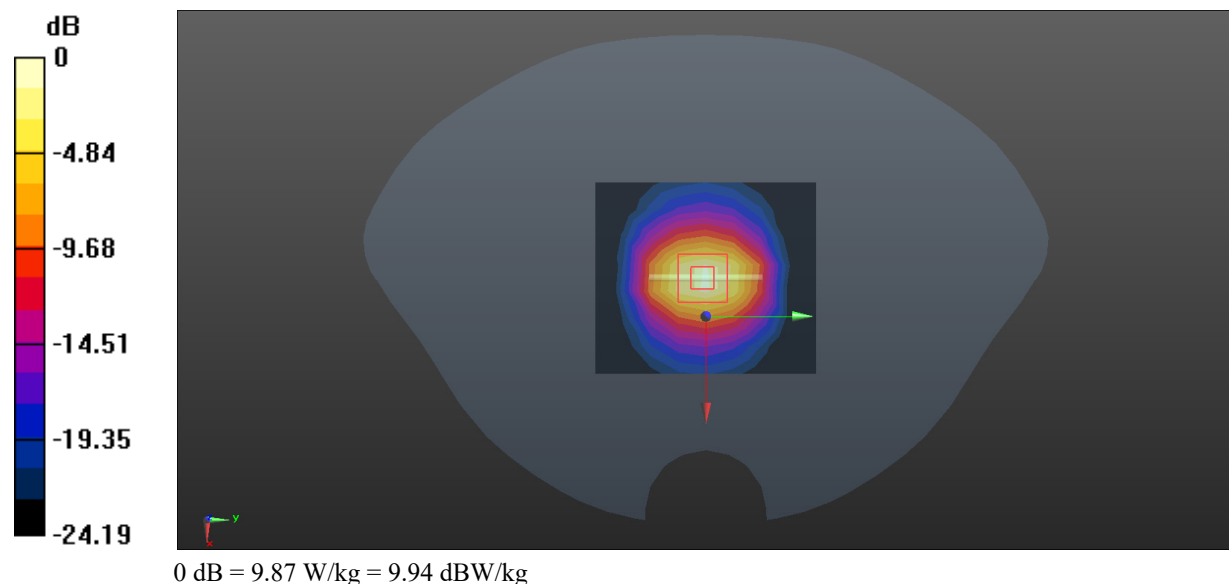
**Zoom Scan (7x7x7)/Cube 0:** Measurement grid: dx=5mm, dy=5mm, dz=5mm

Reference Value = 56.82 V/m; Power Drift = 0.08 dB

Peak SAR (extrapolated) = 11.4 W/kg

**SAR(1 g) = 5.76 W/kg; SAR(10 g) = 2.66 W/kg**

Maximum value of SAR (measured) = 9.87 W/kg



**System Performance 5250 MHz****DUT: D5GHzV2; Type: 5250 MHz; Serial: 1246**

Communication System: CW; Frequency: 5250 MHz; Duty Cycle: 1:1

Medium parameters used:  $f = 5250$  MHz;  $\sigma = 4.481$  S/m;  $\epsilon_r = 35.281$ ;  $\rho = 1000$  kg/m<sup>3</sup>

Phantom section: Flat Section

DASY5 Configuration:

- Probe: EX3DV4 - SN7522; ConvF(5.36, 5.36, 5.36) @ 5250 MHz; Calibrated: 2023/5/29
- Sensor-Surface: 1.4mm (Mechanical Surface Detection)
- Electronics: DAE4 Sn1354; Calibrated: 2022/10/31
- Phantom: Twin SAM V5.0; Type: QD000P40CD; Serial: TP:1470
- Measurement SW: DASY52, Version 52.10 (2); SEMCAD X Version 14.6.12 (7470)

**Area Scan (9x11x1):** Measurement grid: dx=10 mm, dy=10 mm

Maximum value of SAR (measured) = 22.1 W/kg

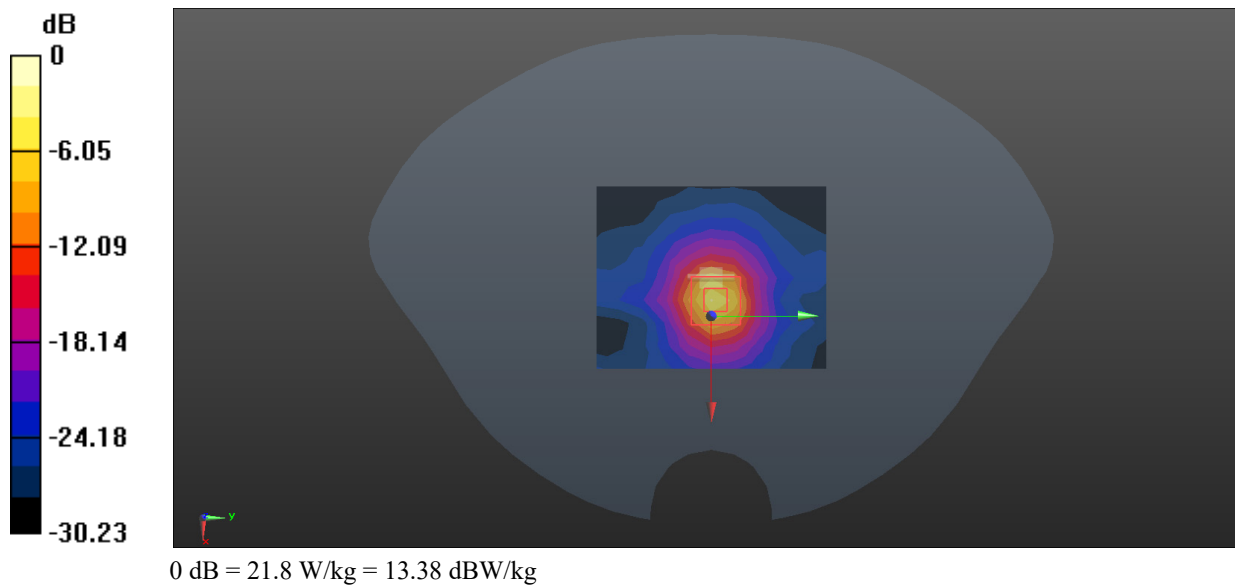
**Zoom Scan (7x7x16)/Cube 0::** Measurement grid: dx=4mm, dy=4mm, dz=2mm

Reference Value = 44.87 V/m; Power Drift = -0.06 dB

Peak SAR (extrapolated) = 31.7 W/kg

**SAR(1 g) = 7.87 W/kg; SAR(10 g) = 2.32 W/kg**

Maximum value of SAR (measured) = 21.8 W/kg



**System Performance 5750 MHz****DUT: D5GHzV2; Type: 5750 MHz; Serial: 1246**

Communication System: CW; Frequency: 5750 MHz; Duty Cycle: 1:1

Medium parameters used:  $f = 5750$  MHz;  $\sigma = 5.023$  S/m;  $\epsilon_r = 34.733$ ;  $\rho = 1000$  kg/m<sup>3</sup>

Phantom section: Flat Section

DASY5 Configuration:

- Probe: EX3DV4 - SN7522; ConvF(4.9, 4.9, 4.9) @ 5750 MHz; Calibrated: 2023/1/3
- Sensor-Surface: 1.4mm (Mechanical Surface Detection)
- Electronics: DAE4 Sn1354; Calibrated: 2022/10/31
- Phantom: Twin SAM V5.0; Type: QD000P40CD; Serial: TP:1470
- Measurement SW: DASY52, Version 52.10 (2); SEMCAD X Version 14.6.12 (7470)

**Area Scan (8x8x1):** Measurement grid: dx=10 mm, dy=10 mm

Maximum value of SAR (measured) = 24.6 W/kg

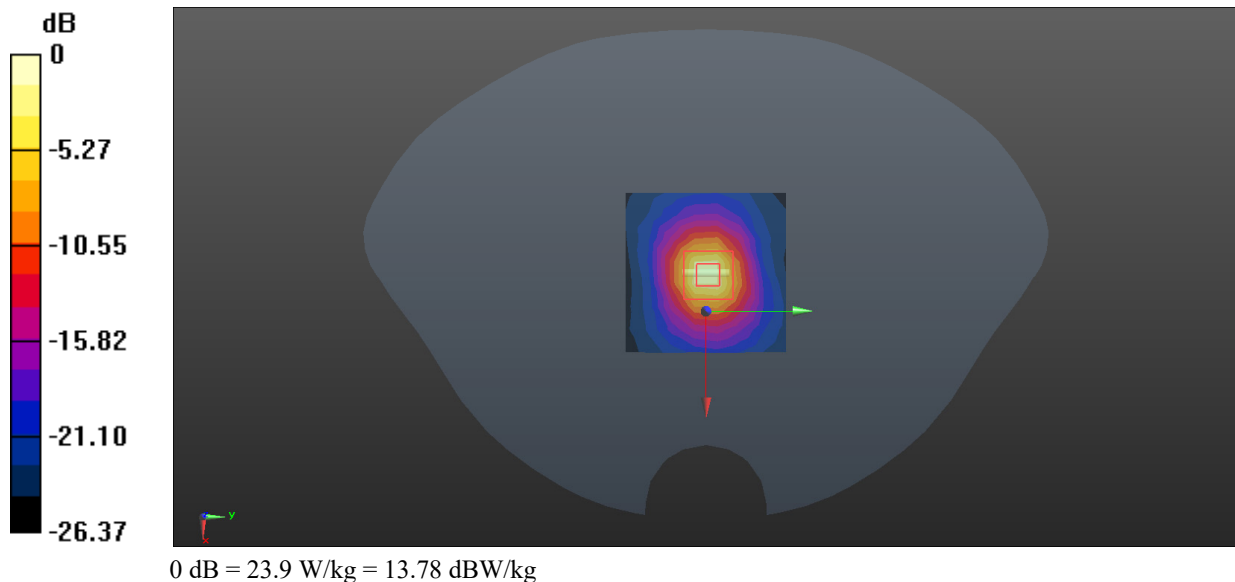
**Zoom Scan (7x7x16)/Cube 0::** Measurement grid: dx=4mm, dy=4mm, dz=2mm

Reference Value = 48.35 V/m; Power Drift = -0.11 dB

Peak SAR (extrapolated) = 32.4 W/kg

**SAR(1 g) = 7.88 W/kg; SAR(10 g) = 2.37 W/kg**

Maximum value of SAR (measured) = 23.9 W/kg

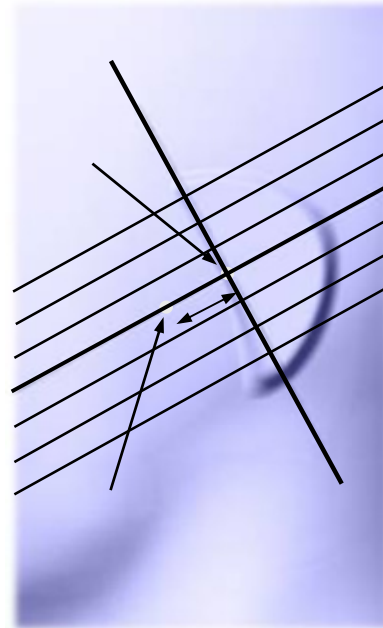
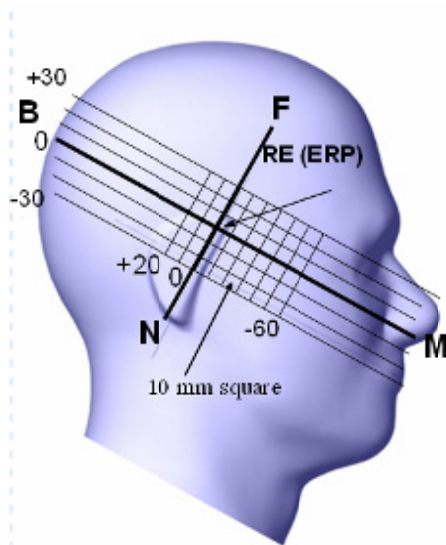


## 5. EUT TEST STRATEGY AND METHODOLOGY

### 5.1 Test Positions for Device Operating Next to a Person's Ear

This category includes most wireless handsets with fixed, retractable or internal antennas located toward the top half of the device, with or without a foldout, sliding or similar keypad cover. The handset should have its earpiece located within the upper ¼ of the device, either along the centerline or off-centered, as perceived by its users. This type of handset should be positioned in a normal operating position with the “test device reference point” located along the “vertical centerline” on the front of the device aligned to the “ear reference point”. The “test device reference point” should be located at the same level as the center of the earpiece region. The “vertical centerline” should bisect the front surface of the handset at its top and bottom edges. A “ear reference point” is located on the outer surface of the head phantom on each ear spacer. It is located 1.5 cm above the center of the ear canal entrance in the “phantom reference plane” defined by the three lines joining the center of each “ear reference point” (left and right) and the tip of the mouth.

A handset should be initially positioned with the earpiece region pressed against the ear spacer of a head phantom. For the SCC-34/SC-2 head phantom, the device should be positioned parallel to the “N-F” line defined along the base of the ear spacer that contains the “ear reference point”. For interim head phantoms, the device should be positioned parallel to the cheek for maximum RF energy coupling. The “test device reference point” is aligned to the “ear reference point” on the head phantom and the “vertical centerline” is aligned to the “phantom reference plane”. This is called the “initial ear position”. While maintaining these three alignments, the body of the handset is gradually adjusted to each of the following positions for evaluating SAR:



## 5.2 Cheek/Touch Position

The device is brought toward the mouth of the head phantom by pivoting against the “ear reference point” or along the “N-F” line for the SCC-34/SC-2 head phantom.

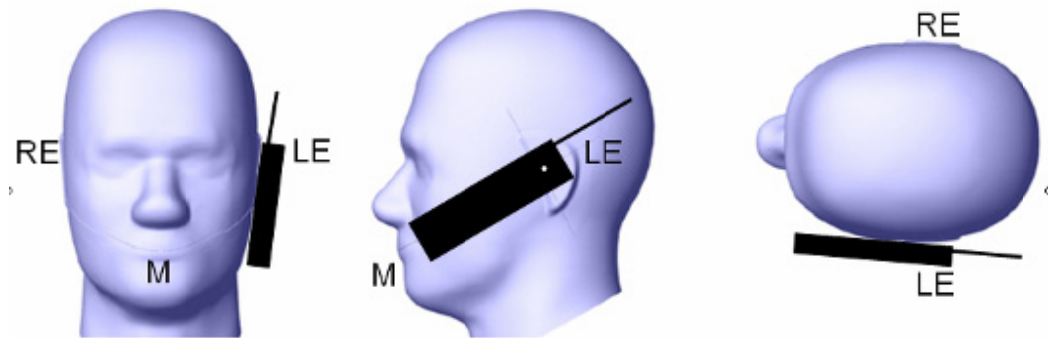
This test position is established:

When any point on the display, keypad or mouthpiece portions of the handset is in contact with the phantom.

(or) When any portion of a foldout, sliding or similar keypad cover opened to its intended self-adjusting normal use position is in contact with the cheek or mouth of the phantom.

For existing head phantoms – when the handset loses contact with the phantom at the pivoting point, rotation should continue until the device touches the cheek of the phantom or breaks its last contact from the ear spacer.

### Cheek /Touch Position



## 5.3 Ear/Tilt Position

With the handset aligned in the “Cheek/Touch Position”:

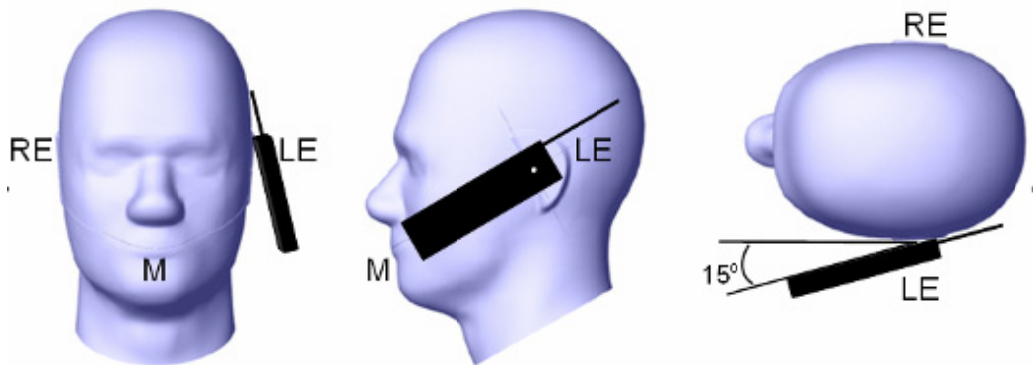
1) If the earpiece of the handset is not in full contact with the phantom’s ear spacer (in the “Cheek/Touch position”) and the peak SAR location for the “Cheek/Touch” position is located at the ear spacer region or corresponds to the earpiece region of the handset, the device should be returned to the “initial ear position” by rotating it away from the mouth until the earpiece is in full contact with the ear spacer.

2) (otherwise) The handset should be moved (translated) away from the cheek perpendicular to the line passes through both “ear reference points” (note: one of these ear reference points may not physically exist on a split head model) for approximate 2-3 cm. While it is in this position, the device handset is tilted away from the mouth with respect to the “test device reference point” until the inside angle between the vertical centerline on the front surface of the phone and the horizontal line passing through the ear reference point is by 15 80°. After the tilt, it is then moved (translated) back toward the head perpendicular to the line passes through both “ear reference points” until the device touches the phantom or the ear spacer. If the antenna touches the head first, the positioning process should be repeated with a tilt angle less than 15° so that the device and its antenna would touch the phantom simultaneously. This test position may require a device holder or positioner to achieve the translation and tilting with acceptable positioning repeatability.

If a device is also designed to transmit with its keypad cover closed for operating in the head position, such positions should also be considered in the SAR evaluation. The device should be tested on the left and right side of the head phantom in the “Cheek/Touch” and “Ear/Tilt” positions. When applicable, each configuration should be tested with the antenna in its fully extended and fully retracted positions. These

test configurations should be tested at the high, middle and low frequency channels of each operating mode; for example, AMPS, CDMA, and TDMA. If the SAR measured at the middle channel for each test configuration (left, right, Cheek/Touch, Tilt/Ear, extended and retracted) is at least 2.0 dB lower than the SAR limit, testing at the high and low channels is optional for such test configuration(s). If the transmission band of the test device is less than 10 MHz, testing at the high and low frequency channels is optional.

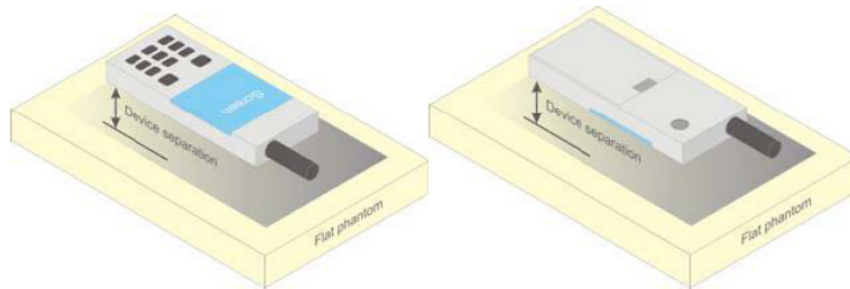
#### Ear /Tilt 15° Position



#### **5.4 Test positions for body-worn and other configurations**

Body-worn operating configurations should be tested with the belt-clips and holsters attached to the device and positioned against a flat phantom in normal use configurations. Devices with a headset output should be tested with a headset connected to the device. When multiple accessories that do not contain metallic components are supplied with the device, the device may be tested with only the accessory that dictates the closest spacing to the body. When multiple accessories that contain metallic components are supplied with the device, the device must be tested with each accessory that contains a unique metallic component. If multiple accessories share an identical metallic component (e.g., the same metallic belt-clip used with different holsters with no other metallic components), only the accessory that dictates the closest spacing to the body must be tested.

Body-worn accessories may not always be supplied or available as options for some devices that are intended to be authorized for body-worn use. A separation distance of 1.5 cm between the back of the device and a flat phantom is recommended for testing body-worn SAR compliance under such circumstances. Other separation distances may be used, but they should not exceed 2.5 cm. In these cases, the device may use body-worn accessories that provide a separation distance greater than that tested for the device provided however that the accessory contains no metallic components.



**Figure 5 – Test positions for body-worn devices**

### **5.5 Test Distance for SAR Evaluation**

In this case the EUT(Equipment Under Test) is set directly against the phantom, the test distance is 0mm.



## 5.6 SAR Evaluation Procedure

The evaluation was performed with the following procedure:

Step 1: Measurement of the SAR value at a fixed location above the ear point or central position was used as a reference value for assessing the power drop. The SAR at this point is measured at the start of the test and then again at the end of the testing.

Step 2: The SAR distribution at the exposed side of the head was measured at a distance of 4 mm from the inner surface of the shell. The area covered the entire dimension of the head or radiating structures of the EUT, the horizontal grid spacing was 15 mm x 15 mm, and the SAR distribution was determined by integrated grid of 1.5mm x 1.5mm. Based on these data, the area of the maximum absorption was determined by spline interpolation. The first Area Scan covers the entire dimension of the EUT to ensure that the hotspot was correctly identified.

Step 3: Around this point, a volume of 30 mm x 30 mm x 30 mm was assessed by measuring 7x 7 x 7 points. On the basis of this data set, the spatial peak SAR value was evaluated under the following procedure:

- 1) The data at the surface were extrapolated, since the center of the dipoles is 1.2 mm away from the tip of the probe and the distance between the surface and the lowest measuring point is 1.3 mm. The extrapolation was based on a least square algorithm. A polynomial of the fourth order was calculated through the points in z-axes. This polynomial was then used to evaluate the points between the surface and the probe tip.

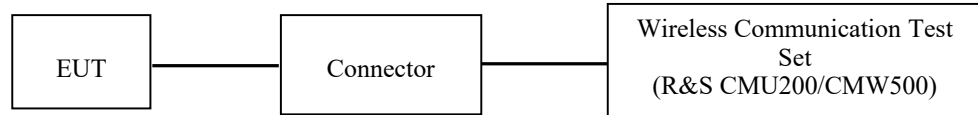
- 2) The maximum Measured value was searched with a straightforward algorithm. Around this maximum the SAR values averaged over the spatial volumes (1 g or 10 g) were computed by the 3D-Spline interpolation algorithm. The 3D-Spline is composed of three one dimensional splines with the "Not a knot"-condition (in x, y and z-directions). The volume was integrated with the trapezoidal-algorithm. One thousand points (10 x 10 x 10) were Measured to calculate the averages.

All neighboring volumes were evaluated until no neighboring volume with a higher average value was found.

Step 4: Re-measurement of the SAR value at the same location as in Step 1. If the value changed by more than 5%, the evaluation was repeated.

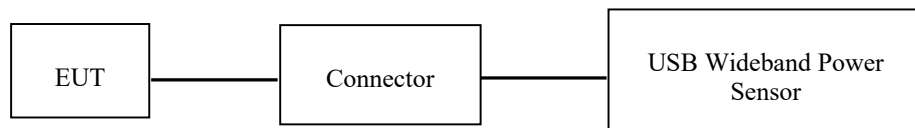
## 6. CONDUCTED OUTPUT POWER MEASUREMENT

The RF output of the transmitter was connected to the input of the Wireless Communication Test Set through Connector.



### GSM/LTE

The RF output of the transmitter was connected to the input port of the USB Wideband Power Sensor through Connector.



### BT/WLAN

## 6.2 Description of Test Configuration

### EUT Operation Condition:

<b>EUT Operation Mode:</b>	The system was configured for testing in each operation mode.
<b>Equipment Modifications:</b>	No
<b>EUT Exercise Software:</b>	No
<p>The maximum power was configured per 3GPP Standard for each operation modes as below setting:</p> <p><b>GSM/GPRS/EGPRS</b></p> <p>Function: Menu select &gt; GSM Mobile Station &gt; GSM 850/1900            Press Connection control to choose the different menus            Press RESET &gt; choose all the reset all settings            Connection Press Signal Off to turn off the signal and change settings            Network Support &gt; GSM + GPRS or GSM + EGSM            Main Service &gt; Packet Data            Service selection &gt; Test Mode A – Auto Slot Config. off            MS Signal Press Slot Config Bottom on the right twice to select and change the number of time slots and power setting</p> <ul style="list-style-type: none"> <li>&gt; Slot configuration &gt; Uplink/Gamma</li> <li>&gt; 33 dBm for GPRS 850</li> <li>&gt; 30 dBm for GPRS 1900</li> <li>&gt; 27 dBm for EGPRS 850</li> <li>&gt; 26 dBm for EGPRS 1900</li> </ul> <p>BS Signal Enter the same channel number for TCH channel (test channel) and BCCH channel            Frequency Offset &gt; + 0 Hz            Mode &gt; BCCH and TCH</p> <p>BCCH Level &gt; -85 dBm (May need to adjust if link is not stable)            BCCH Channel &gt; choose desire test channel [Enter the same channel number for TCH channel (test channel) and BCCH channel]</p> <p>Channel Type &gt; Off            P0 &gt; 4 dB            Slot Config &gt; Unchanged (if already set under MS signal)            TCH &gt; choose desired test channel            Hopping &gt; Off            Main Timeslot &gt; 3            Network Coding Scheme &gt; CS4 (GPRS) and MCS5 (EGPRS)</p> <p>Bit Stream &gt; 2E9-1 PSR Bit Stream            AF/RF Enter appropriate offsets for Ext. Att. Output and Ext. Att. Input            Connection Press Sign</p>	

**LTE (FDD):**

The following tests were conducted according to the test requirements in 3GPP TS36.101

The following tests were conducted according to the test requirements outlined in section 6.2 of the 3GPP TS36.101 specification.

UE Power Class: 3 (23 +/- 2dBm). The allowed Maximum Power Reduction (MPR) for the maximum output power due to higher order modulation and transmit bandwidth configuration (resource blocks) is specified in Table 6.2.3-1 of the 3GPP TS36.101.

**Table 6.2.3-1: Maximum Power Reduction (MPR) for Power Class 3**

Modulation	Channel bandwidth / Transmission bandwidth (RB)						MPR (dB)
	1.4 MHz	3.0 MHz	5 MHz	10 MHz	15 MHz	20 MHz	
QPSK	> 5	> 4	> 8	> 12	> 16	> 18	≤ 1
16 QAM	≤ 5	≤ 4	≤ 8	≤ 12	≤ 16	≤ 18	≤ 1
64 QAM	> 5	> 4	> 8	> 12	> 16	> 18	≤ 2

The allowed A-MPR values specified below in Table 6.2.4.-1 of 3GPP TS36.101 are in addition to the allowed MPR requirements. All the measurements below were performed with A-MPR disabled, by using Network Signaling Value of "NS\_01".

**Table 6.2.4-1: Additional Maximum Power Reduction (A-MPR)**

Network Signalling value	Requirements (sub-clause)	E-UTRA Band	Channel bandwidth (MHz)	Resources Blocks ( $N_{RB}$ )	A-MPR (dB)
NS_01	6.6.2.1.1	Table 5.5-1	1.4, 3, 5, 10, 15, 20	Table 5.6-1	NA
NS_03	6.6.2.2.1	2, 4, 10, 23, 25, 35, 36	3	>5	≤ 1
			5	>6	≤ 1
			10	>6	≤ 1
			15	>8	≤ 1
			20	>10	≤ 1
NS_04	6.6.2.2.2	41	5	>6	≤ 1
			10, 15, 20	See Table 6.2.4-4	
NS_05	6.6.3.3.1	1	10,15,20	≥ 50	≤ 1
NS_06	6.6.2.2.3	12, 13, 14, 17	1.4, 3, 5, 10	Table 5.6-1	n/a
NS_07	6.6.2.2.3	13	10	Table 6.2.4-2	Table 6.2.4-2
	6.6.3.3.2				
NS_08	6.6.3.3.3	19	10, 15	> 44	≤ 3
NS_09	6.6.3.3.4	21	10, 15	> 40	≤ 1
				> 55	≤ 2
NS_10		20	15, 20	Table 6.2.4-3	Table 6.2.4-3
NS_11	6.6.2.2.1	23 <sup>1</sup>	1.4, 3, 5, 10	Table 6.2.4-5	Table 6.2.4-5
..					
NS_32	-	-	-	-	-

Note 1: Applies to the lower block of Band 23, i.e. a carrier placed in the 2000-2010 MHz region.

## TDD-LTE

LTE TDD Band 41 supports 3GPP TS 36.211 section 4.2 for Type 2 Frame Structure and Table 4.2-2 for uplink-downlink configurations and Table 4.2-1 for Special subframe configurations.

Table 4.2-1: Configuration of special subframe (lengths of DwPTS/GP/UpPTS).

Special subframe configuration	Normal cyclic prefix in downlink		Extended cyclic prefix in downlink	
	DwPTS	UpPTS	DwPTS	UpPTS
		Normal cyclic prefix in uplink	Extended cyclic prefix in uplink	
0	$6592 \cdot T_s$	$2192 \cdot T_s$	$2560 \cdot T_s$	$7680 \cdot T_s$
1	$19760 \cdot T_s$			$20480 \cdot T_s$
2	$21952 \cdot T_s$			$23040 \cdot T_s$
3	$24144 \cdot T_s$			$25600 \cdot T_s$
4	$26336 \cdot T_s$	$4384 \cdot T_s$	$5120 \cdot T_s$	$7680 \cdot T_s$
5	$6592 \cdot T_s$			$20480 \cdot T_s$
6	$19760 \cdot T_s$			$23040 \cdot T_s$
7	$21952 \cdot T_s$			$12800 \cdot T_s$
8	$24144 \cdot T_s$			-
9	$13168 \cdot T_s$			-

Table 4.2-2: Uplink-downlink configurations.

Uplink-downlink configuration	Downlink-to-Uplink Switch-point periodicity	Subframe number									
		0	1	2	3	4	5	6	7	8	9
0	5 ms	D	S	U	U	U	D	S	U	U	U
1	5 ms	D	S	U	U	D	D	S	U	U	D
2	5 ms	D	S	U	D	D	D	S	U	D	D

Calculated Duty Cycle

Uplink-Downlink Configuration	Downlink-to-Uplink Switch-point Periodicity	Subframe Number										Calculated Duty Cycle (%)
		0	1	2	3	4	5	6	7	8	9	
0	5 ms	D	S	U	U	U	D	S	U	U	U	63.33
1	5 ms	D	S	U	U	D	D	S	U	U	D	43.33
2	5 ms	D	S	U	D	D	D	S	U	D	D	23.33
3	10 ms	D	S	U	U	U	D	D	D	D	D	31.67
4	10 ms	D	S	U	U	D	D	D	D	D	D	21.67
5	10 ms	D	S	U	D	D	D	D	D	D	D	11.67
6	5 ms	D	S	U	U	U	D	S	U	U	D	53.33

We used configuration 0 for SAR test, that is 63.33%(1:1.58)for duty cycle

### 6.3 Maximum Target Output Power

Max Target Power(dBm)			
Mode/Band	Channel		
	Low	Middle	High
GSM 850	33.0	33.0	33.0
GPRS 1 TX Slot	33.0	33.0	33.0
GPRS 2 TX Slot	32.5	32.5	32.5
GPRS 3 TX Slot	31.0	31.0	31.0
GPRS 4 TX Slot	29.5	29.5	29.5
PCS 1900	30.5	30.5	30.5
GPRS 1 TX Slot	30.5	30.5	30.5
GPRS 2 TX Slot	29.5	29.5	29.5
GPRS 3 TX Slot	28.0	28.0	28.0
GPRS 4 TX Slot	26.5	26.5	26.5
LTE Band 5	23.5	23.5	23.5
LTE Band 40A	22.5	22.5	22.5
LTE Band 40B	22.0	22.0	22.0
LTE Band 41	23.5	23.5	23.5
WLAN 2.4G	17.5	17.5	17.5
U-NII-1	10.0	10.0	10.0
U-NII-2A	10.0	10.0	10.0
U-NII-3	8.5	8.5	8.5
Bluetooth	9.0	9.0	9.0
BLE	-6.0	-6.0	-6.0

**6.4 Test Results:****GSM:**

Band	Channel No.	Frequency (MHz)	RF Output Power (dBm)
GSM 850	128	824.2	32.49
	190	836.6	32.65
	251	848.8	<b>32.87</b>
PCS 1900	512	1850.2	29.95
	661	1880	30.10
	810	1909.8	30.03

**GPRS:**

Band	Channel No.	Frequency (MHz)	RF Output Power (dBm)			
			1 slot	2 slots	3 slots	4 slots
GSM 850	128	824.2	32.52	31.80	30.06	28.80
	190	836.6	32.67	31.96	30.25	29.04
	251	848.8	32.73	32.07	30.40	29.18
PCS 1900	512	1850.2	<b>30.11</b>	29.26	27.20	25.93
	661	1880	30.06	29.25	27.23	25.96
	810	1909.8	30.02	29.23	27.24	25.96

For SAR, the time based average power is relevant, the difference in between depends on the duty cycle of the TDMA signal.

Number of Time slot	1	2	3	4
Duty Cycle	1:8	1:4	1:2.66	1:2
Time based Ave. power compared to slotted Ave. power	-9 dB	-6 dB	-4.25 dB	-3 dB
Crest Factor	8	4	2.66	2

**The time based average power for GPRS**

Band	Channel No.	Frequency (MHz)	RF Output Power (dBm)			
			1 slot	2 slots	3 slots	4 slots
GSM 850	128	824.2	23.52	25.80	25.81	25.80
	190	836.6	23.67	25.96	26.00	26.04
	251	848.8	23.73	26.07	26.15	<b>26.18</b>
PCS 1900	512	1850.2	21.11	<b>23.26</b>	22.95	22.93
	661	1880	21.06	23.25	22.98	22.96
	810	1909.8	21.02	23.23	22.99	22.96

**Note:**

1. Rohde & Schwarz Radio Communication Tester (CMU500) was used for the measurement of GSM peak and average output power for active timeslots.
- 2 .For GSM voice, 1 timeslot has been activated with power level 5 (850 MHz band) and 0 (1900 MHz band).
- 3 .For GPRS, 1, 2, 3 and 4 timeslots has been activated separately with power level 2 (850 MHz band) and 3(1900 MHz band).



**LTE Band 5:**

Test Bandwidth	Test Modulation	Resource Block & RB offset	Target MPR	Meas MPR	Low Channel (dBm)	Middle Channel (dBm)	High Channel (dBm)
1.4M	QPSK	RB1#0	0	0	23.14	22.86	23.05
		RB1#3	0	0	23.06	22.83	22.94
		RB1#5	0	0	23.08	22.83	22.85
		RB3#0	1	1	23.12	22.84	23.03
		RB3#3	1	1	23.04	22.81	22.92
		RB6#0	1	1	23.06	22.81	22.83
	16-QAM	RB1#0	1	1	22.90	22.58	22.69
		RB1#3	1	1	22.87	22.60	22.60
		RB1#5	1	1	22.88	22.57	22.61
		RB3#0	2	2	22.89	22.57	22.68
		RB3#3	2	2	22.86	22.59	22.59
		RB6#0	2	2	22.87	22.56	22.60
3M	QPSK	RB1#0	0	0	23.18	22.90	23.09
		RB1#8	0	0	23.10	22.87	22.98
		RB1#14	0	0	23.12	22.87	22.89
		RB6#0	1	1	23.01	22.81	22.82
		RB6#9	1	1	23.02	22.73	22.84
		RB15#0	1	1	22.98	22.72	22.68
	16-QAM	RB1#0	1	1	22.94	22.62	22.73
		RB1#8	1	1	22.91	22.64	22.64
		RB1#14	1	1	22.92	22.61	22.65
		RB6#0	2	2	22.58	22.36	22.36
		RB6#9	2	2	22.53	22.31	22.39
		RB15#0	2	2	22.53	22.30	22.25
5M	QPSK	RB1#0	0	0	23.24	22.96	23.15
		RB1#13	0	0	23.16	22.93	23.04
		RB1#24	0	0	23.18	22.93	22.95
		RB15#0	1	1	23.07	22.87	22.88
		RB15#10	1	1	23.08	22.79	22.90
		RB25#0	1	1	23.04	22.78	22.74
	16-QAM	RB1#0	1	1	23.00	22.68	22.79
		RB1#13	1	1	22.97	22.70	22.70
		RB1#24	1	1	22.98	22.67	22.71
		RB15#0	2	2	22.64	22.42	22.42
		RB15#10	2	2	22.59	22.37	22.45
		RB25#0	2	2	22.59	22.36	22.31
10M	QPSK	RB1#0	0	0	<b>23.36</b>	23.11	23.24
		RB1#25	0	0	23.32	23.05	23.17
		RB1#49	0	0	23.28	23.01	23.10
		RB25#0	1	1	23.21	23.28	23.24
		RB25#25	1	1	23.16	23.19	23.17

	16-QAM	RB50#0	1	1	22.85	23.11	22.88
		RB1#0	1	1	23.06	22.80	22.83
		RB1#25	1	1	23.03	22.77	22.80
		RB1#49	1	1	23.02	22.76	22.79
		RB25#0	2	2	22.73	22.47	22.50
		RB25#25	2	2	22.72	22.46	22.49
		RB50#0	2	2	22.67	22.41	22.44

**LTE Band 40 A:**

Test Bandwidth	Test Modulation	Resource Block & RB offset	Low Channel (dBm)	Middle Channel (dBm)	High Channel (dBm)
5M	QPSK	RB1#0	21.65	21.62	21.57
		RB1#13	21.71	21.68	21.66
		RB1#24	21.58	21.60	21.54
		RB15#0	20.68	20.68	20.66
		RB15#10	20.81	20.56	20.65
		RB25#0	20.70	20.68	20.66
	16QAM	RB1#0	20.63	20.87	20.52
		RB1#13	20.81	20.98	20.59
		RB1#24	20.67	20.80	20.50
		RB15#0	19.61	19.56	19.51
		RB15#10	19.68	19.59	19.52
		RB25#0	19.64	19.65	19.63
10M	QPSK	RB1#0	/	21.84	/
		RB1#25	/	22.36	/
		RB1#49	/	21.98	/
		RB25#0	/	<b>22.45</b>	/
		RB25#25	/	20.64	/
		RB50#0	/	22.41	/
	16QAM	RB1#0	/	20.67	/
		RB1#25	/	20.93	/
		RB1#49	/	20.49	/
		RB25#0	/	19.78	/
		RB25#25	/	19.66	/
		RB50#0	/	19.72	/

**LTE Band 40B:**

Test Bandwidth	Test Modulation	Resource Block & RB offset	Low Channel (dBm)	Middle Channel (dBm)	High Channel (dBm)
5M	QPSK	RB1#0	21.35	21.32	21.28
		RB1#13	21.44	21.43	21.39
		RB1#24	21.25	21.34	21.25
		RB15#0	20.44	20.38	20.28
		RB15#10	20.33	20.37	20.45
		RB25#0	20.30	20.46	20.30
	16QAM	RB1#0	20.46	20.58	20.38
		RB1#13	20.48	20.65	20.41
		RB1#24	20.40	20.52	20.33
		RB15#0	19.37	19.45	19.23
		RB15#10	19.37	19.37	19.23
		RB25#0	19.48	19.22	19.40
10M	QPSK	RB1#0	/	21.56	/
		RB1#25	/	21.73	/
		RB1#49	/	21.32	/
		RB25#0	/	21.69	/
		RB25#25	/	<b>21.82</b>	/
		RB50#0	/	21.77	/
	16QAM	RB1#0	/	20.32	/
		RB1#25	/	20.62	/
		RB1#49	/	20.24	/
		RB25#0	/	19.40	/
		RB25#25	/	19.44	/
		RB50#0	/	19.44	/

**LTE Band 41:**

Test Bandwidth	Test Modulation	Resource Block & RB offset	Target MP R	Meas M PR	Low Channel (dBm)	Low-Mid Channel (dBm)	Mid Channel (dBm)	Mid-High Channel (dBm)	High Channel (dBm)
5M	QPSK	RB1#0	0	0	22.94	23.03	23.01	22.89	22.85
		RB1#13	0	0	22.86	22.89	22.88	22.86	22.67
		RB1#24	0	0	22.85	22.76	22.85	22.71	22.57
		RB15#0	1	1	22.84	22.75	22.83	22.64	22.47
		RB15#10	1	1	22.82	22.71	22.75	22.56	22.38
		RB25#0	1	1	22.79	22.64	22.71	22.51	22.30
	16-QAM	RB1#0	1	1	22.73	22.62	22.67	22.46	22.24
		RB1#13	1	1	22.70	22.57	22.66	22.41	22.23
		RB1#24	1	1	22.69	22.44	22.51	22.33	22.20
		RB15#0	2	2	22.66	22.42	22.49	22.32	22.18
		RB15#10	2	2	22.57	22.36	22.31	22.18	22.17
		RB25#0	2	2	22.53	22.28	22.28	22.17	22.10
10M	QPSK	RB1#0	0	0	22.97	23.06	23.04	22.92	22.88
		RB1#25	0	0	22.89	22.92	22.91	22.89	22.70
		RB1#49	0	0	22.88	22.79	22.88	22.74	22.60
		RB25#0	1	1	22.87	22.78	22.86	22.67	22.50
		RB25#25	1	1	22.85	22.74	22.78	22.59	22.41
		RB50#0	1	1	22.82	22.67	22.74	22.54	22.33
	16-QAM	RB1#0	1	1	22.76	22.65	22.70	22.49	22.27
		RB1#25	1	1	22.73	22.60	22.69	22.44	22.26
		RB1#49	1	1	22.72	22.47	22.54	22.36	22.23
		RB25#0	2	2	22.69	22.45	22.52	22.35	22.21
		RB25#25	2	2	22.60	22.39	22.34	22.21	22.20
		RB50#0	2	2	22.56	22.31	22.31	22.20	22.13
15M	QPSK	RB1#0	0	0	23.01	23.10	23.08	22.96	22.92
		RB1#38	0	0	22.93	22.96	22.95	22.93	22.74
		RB1#74	0	0	22.92	22.83	22.92	22.78	22.64
		RB36#0	1	1	22.91	22.82	22.90	22.71	22.54
		RB36#39	1	1	22.89	22.78	22.82	22.63	22.45
		RB75#0	1	1	22.86	22.71	22.78	22.58	22.37
	16-QAM	RB1#0	1	1	22.80	22.69	22.74	22.53	22.31
		RB1#38	1	1	22.77	22.64	22.73	22.48	22.30
		RB1#74	1	1	22.76	22.51	22.58	22.40	22.27
		RB36#0	2	2	22.73	22.49	22.56	22.39	22.25
		RB36#39	2	2	22.64	22.43	22.38	22.25	22.24
		RB75#0	2	2	22.60	22.35	22.35	22.24	22.17
20M	QPSK	RB1#0	0	0	23.06	<b>23.16</b>	23.12	23.01	22.98
		RB1#50	0	0	22.99	23.02	23.01	22.99	22.80
		RB1#99	0	0	22.98	22.89	22.98	22.84	22.70
		RB50#0	1	1	22.97	22.88	23.16	22.77	22.60
		RB50#50	1	1	22.95	22.84	22.88	22.69	22.51

	16-QAM	RB100#0	1	1	22.92	22.77	22.96	22.64	22.43
		RB1#0	1	1	22.86	22.75	22.80	22.59	22.37
		RB1#50	1	1	22.83	22.70	22.79	22.54	22.36
		RB1#99	1	1	22.82	22.57	22.64	22.46	22.33
		RB50#0	2	2	22.79	22.55	22.62	22.45	22.31
		RB50#50	2	2	22.70	22.49	22.44	22.31	22.30
		RB100#0	2	2	22.69	22.48	22.42	22.29	22.29

The frequency range of LTE Band 41 is 2535 ~ 2655MHz. Per KDB 447498 D01, according to the following formula Calculate  $N_c$  is 4, We chose to test 5 frequency points.

KDB procedures, the following should be applied to determine the number of required test channels. The test channels should be evenly spread across the transmission frequency band of each wireless mode.<sup>14</sup>

$$N_c = \text{Round} \left\{ \left[ 100(f_{\text{high}} - f_{\text{low}}) / f_c \right]^{0.5} \times (f_c / 100)^{0.2} \right\},$$

where

- $N_c$  is the number of test channels, rounded to the nearest integer,
- $f_{\text{high}}$  and  $f_{\text{low}}$  are the highest and lowest channel frequencies within the transmission band,
- $f_c$  is the mid-band channel frequency,
- all frequencies are in MHz.

**Wi-Fi 2.4G:**

Mode	Channel frequency (MHz)	Data Rate	Duty cycle (%)	RF Output Power (dBm)
802.11b	2412	1Mbps	100	15.98
	2437			<b>16.93</b>
	2462			15.76
802.11g	2412	6Mbps	100	16.63
	2437			16.84
	2462			15.42
802.11n HT20	2412	MCS0	100	16.08
	2437			16.91
	2462			15.41

**Wi-Fi 5.2G:**

Mode	Channel frequency (MHz)	Data Rate	Duty cycle (%)	RF Output Power (dBm)
802.11a	5180	6Mbps	100	9.09
	5200			<b>9.12</b>
	5240			9.08
802.11ac20	5180	MCS0	100	9.05
	5200			8.91
	5240			8.94
802.11ac40	5190	MCS0	100	8.76
	5230			9.02
802.11ac80	5210	MCS0	100	7.64

**Wi-Fi 5.3G:**

Mode	Channel frequency (MHz)	Data Rate	Duty cycle (%)	RF Output Power (dBm)
802.11a	5260	6Mbps	100	9.56
	5280			<b>9.82</b>
	5320			9.24
802.11ac20	5260	MCS0	100	9.35
	5280			8.29
	5320			8.09
802.11ac40	5270	MCS0	100	7.74
	5310			7.52
802.11ac80	5290	MCS0	100	6.51

**Wi-Fi 5.8G:**

Mode	Channel frequency (MHz)	Data Rate	Duty cycle (%)	RF Output Power (dBm)
802.11a	5745	6Mbps	100	7.15
	5785			<b>7.97</b>
	5825			7.94
802.11ac20	5745	MCS0	100	7.96
	5785			7.94
	5825			7.87
802.11ac40	5755	MCS0	100	7.85
	5795			7.92
802.11ac80	5775	MCS0	100	7.71

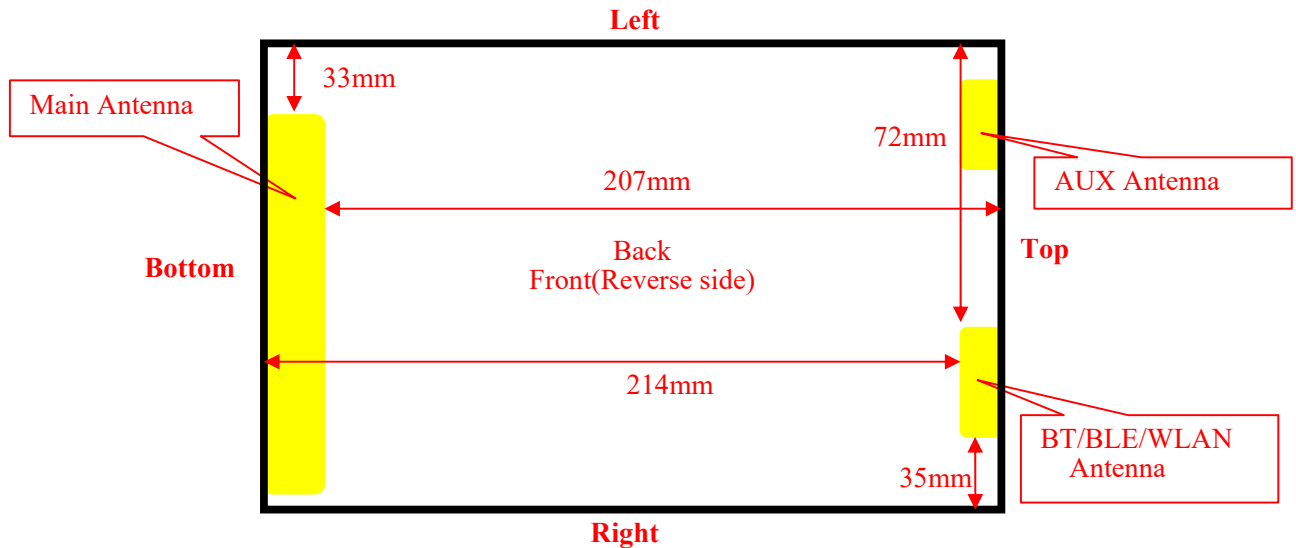
*Note: The duty cycle plots please refer to radio report.*

**Bluetooth:**

Mode	Channel frequency (MHz)	RF Output Power (dBm)
BDR(GFSK)	2402	5.66
	2441	6.32
	2480	<b>8.65</b>
	2454	3.52
EDR( $\pi/4$ -DQPSK)	2402	5.37
	2441	5.62
	2480	7.83
	2454	2.94
EDR(8DPSK)	2402	5.35
	2441	5.72
	2480	7.86
	2454	2.92
BLE_1M	2402	-7.46
	2440	-6.93
	2480	-8.52
BLE_2M	2402	-7.51
	2440	<b>-6.33</b>
	2480	-8.49

## 7. Standalone SAR test exclusion considerations

### Antennas Location:



Note: The AUX antenna can only receive.

### 7.1 Antenna Distance To Edge

Antenna Distance To Edge(mm)						
Antenna	Back	Front	Left	Right	Top	Bottom
WWAN(GSM/LTE) Main Antenna	< 5	< 5	33.	< 5	207	< 5
WLAN&BT Antenna	< 5	< 5	72	35	< 5	214

### 7.2 Standalone SAR test exclusion considerations

Mode	Frequency (MHz)	Output Power (dBm)	Output Power (mW)	Distance (mm)	Calculated value	Threshold (1-g)	SAR Test Exclusion
2.4G WLAN	2462	17.5	56.23	0	17.6	3	No
U-NII-1	5250	10.0	10.00	0	4.6	3	No
U-NII-2A	5350	10.0	10.00	0	4.6	3	No
U-NII-3	5850	8.5	7.08	0	3.4	3	No
Bluetooth	2480	9.0	7.94	0	2.5	3	Yes

#### NOTE:

The 1-g and 10-g SAR test exclusion thresholds for 100 MHz to 6 GHz at test separation distances  $\leq 50$  mm are determined by:

$$\left[ \frac{(\text{max. power of channel, including tune-up tolerance, mW})}{(\text{min. test separation distance, mm})} \right] \cdot$$

$$[\sqrt{f(\text{GHz})}] \leq 3.0 \text{ for 1-g SAR and } \leq 7.5 \text{ for 10-g extremity SAR, where}$$

1.  $f(\text{GHz})$  is the RF channel transmit frequency in GHz.

2. Power and distance are rounded to the nearest mW and mm before calculation.

3. The result is rounded to one decimal place for comparison.



4. When the minimum test separation distance is < 5 mm, a distance of 5 mm is applied to determine SAR test Exclusion.

### 7.3 Standalone SAR estimation:

Mode	Frequency (MHz)	Output Power (dBm)	Output Power (mW)	Distance (mm)	Estimated 1-g (W/kg)
BT Head	2480	9.0	7.94	0	0.33
BT Body	2480	9.0	7.94	0	0.33

**Note:** The bluetooth based peak power for calculation.

When standalone SAR test exclusion applies to an antenna that transmits simultaneously with other antennas, the standalone SAR must be estimated according to following to determine simultaneous transmission SAR test exclusion:

$$[(\text{max. power of channel, including tune-up tolerance, mW}) / (\text{min. test separation distance, mm})] \cdot [\sqrt{f(\text{GHz})} / x]$$

W/kg for test separation distances  $\leq 50$  mm;

where  $x = 7.5$  for 1-g SAR.

When the minimum test separation distance is < 5 mm, a distance of 5 mm is applied to determine SAR test Exclusion

### 7.4 SAR test exclusion for the EUT edge considerations Result

Mode	Frequency (MHz)	Output Power (dBm)	Output Power (mW)	Exclusion distance (mm)
GSM 850	849	26.5	446.7	100.1
PCS 1900	1910	23.5	223.9	61.5
LTE Band 5	849	23.5	223.9	60.7
LTE Band 40A	2315	22.5	177.8	57.9
LTE Band 40B	2360	22	158.5	56.0
LTE Band 41	2655	23.5	223.9	63.1
2.4G WLAN	2462	17.5	56.2	29.3
U-NII-1	5250	10.0	10.0	7.6
U-NII-2A	5350	10.0	10.0	7.7
U-NII-3	5850	8.5	7.1	5.7

### 7.4 SAR test exclusion for the EUT edge considerations Result

According to KDB 616217 Section 4.3, SAR evaluation for the front surface of tablet display screens are generally not necessary.

Mode	Back	Left	Right	Top	Bottom
GSM 850	Required	Required	Required	Exclusion	Required
PCS 1900	Required	Required	Required	Exclusion	Required
LTE Band 5	Required	Required	Required	Exclusion	Required
LTE Band 40A	Required	Required	Required	Exclusion	Required
LTE Band 40B	Required	Required	Required	Exclusion	Required
LTE Band 41	Required	Required	Required	Exclusion	Required
2.4G WLAN	Required	Exclusion	Exclusion	Required	Exclusion
U-NII-1	Required	Exclusion	Exclusion	Required	Exclusion
U-NII-2A	Required	Exclusion	Exclusion	Required	Exclusion
U-NII-3	Required	Exclusion	Exclusion	Required	Exclusion

**Note:**

Required: The distance to Edge is less than Exclusion distance, testing is required.

Exclusion: The distance to Edge is more than Exclusion distance, testing is not required.

**SAR test exclusion for the EUT edge considerations detail:****Distance < 50mm (To Edges)**

The 1-g and 10-g SAR test exclusion thresholds for 100 MHz to 6 GHz at test separation distances  $\leq 50$  mm are determined by:

$[(\text{max. power of channel, including tune-up tolerance, mW}) / (\text{min. test separation distance, mm})] \cdot$

$[\sqrt{f(\text{GHz})}] \leq 3.0$  for 1-g SAR and  $\leq 7.5$  for 10-g extremity SAR, where

1.  $f(\text{GHz})$  is the RF channel transmit frequency in GHz.

2. Power and distance are rounded to the nearest mW and mm before calculation.

3. The result is rounded to one decimal place for comparison.

4. When the minimum test separation distance is  $< 5$  mm, a distance of 5 mm is applied to determine SAR test Exclusion.

5. The Time based average Power is used for calculation

**Distance > 50mm (To Edges)**

At 100 MHz to 6 GHz and for *test separation distances*  $> 50$  mm, the SAR test exclusion threshold is determined according to the following:

a)  $[\text{Power allowed at numeric threshold for } 50 \text{ mm in step 1}) + (\text{test separation distance} - 50 \text{ mm}) \cdot (f(\text{MHz})/150)]$  mW, at 100 MHz to 1500 MHz

b)  $[\text{Power allowed at numeric threshold for } 50 \text{ mm in step 1}) + (\text{test separation distance} - 50 \text{ mm}) \cdot 10]$  mW at  $> 1500$  MHz and  $\leq 6$  GHz

## 8. SAR MEASUREMENT RESULTS

This page summarizes the results of the performed dosimetric evaluation.

### 8.1 SAR Test Data

#### Environmental Conditions

<b>Temperature:</b>	22.1-23.3 °C	22.6-23.5 °C	22.2-23 °C
<b>Relative Humidity:</b>	40-53 %	41-57 %	46-52 %
<b>ATM Pressure:</b>	100.9 kPa	100.5 kPa	101.1 kPa
<b>Test Date:</b>	2023/08/23	2023/08/24	2023/08/25

*Testing was performed by Carl Chen, Weidong Lu, Way Li.*

**GSM 850 :**

EUT Position	Frequency (MHz)	Test Mode	Max. Meas. Power (dBm)	Max. Rated Power (dBm)	1g SAR (W/kg)			
					Scaled Factor	Meas. SAR	Scaled SAR	Plot
Head Mode	824.2	GSM	/	/	/	/	/	/
	836.6	GSM	32.65	33.0	1.084	0.38	0.41	1#
	848.8	GSM	/	/	/	/	/	/
Body Worn Back (0mm)	824.2	GSM	/	/	/	/	/	/
	836.6	GSM	32.65	33.0	1.084	0.649	0.70	2#
	848.8	GSM	/	/	/	/	/	/
Body Back (0mm)	824.2	GPRS	28.80	29.5	1.175	0.635	0.75	3#
	836.6	GPRS	29.04	29.5	1.112	0.705	0.78	4#
	848.8	GPRS	29.18	29.5	1.076	1.01	<b>1.09</b>	5#
Body Left (0mm)	824.2	GPRS	/	/	/	/	/	/
	836.6	GPRS	29.04	29.5	1.112	0.194	0.22	6#
	848.8	GPRS	/	/	/	/	/	/
Body Right (0mm)	824.2	GPRS	/	/	/	/	/	/
	836.6	GPRS	29.04	29.5	1.112	0.479	0.53	7#
	848.8	GPRS	/	/	/	/	/	/
Body Bottom (0mm)	824.2	GPRS	28.80	29.5	1.175	0.852	1	8#
	836.6	GPRS	29.04	29.5	1.112	0.883	0.98	9#
	848.8	GPRS	29.18	29.5	1.076	0.995	1.07	10#

**Note:**

1. The EUT transmit and receive through the same GSM antenna while testing SAR.
2. When SAR or MPE is not measured at the maximum power level allowed for production units, the results must be scaled to the maximum tune-up tolerance limit according to the power applied to the individual channels tested to determine compliance.
3. When the maximum output power variation across the required test channels is > 0.5 dB, instead of the middle channel, the highest output power channel must be used.
4. The Multi-slot Classes of EUT is Class 12 which has maximum 4 Downlink slots and 4 Uplink slots, the maximum active slots is 5, when perform the multiple slots scan, 1DL+4UL is the worst case.

**PCS 1900 :**

EUT Position	Frequency (MHz)	Test Mode	Max. Meas. Power (dBm)	Max. Rated Power (dBm)	1g SAR (W/kg)			
					Scaled Factor	Meas. SAR	Scaled SAR	Plot
Head Mode	1850.2	GSM	/	/	/	/	/	/
	1880	GSM	30.10	30.5	1.096	0.168	0.18	11#
	1909.8	GSM	/	/	/	/	/	/
Body Worn Back (0mm)	1850.2	GSM	/	/	/	/	/	/
	1880	GSM	30.10	30.5	1.096	0.152	0.17	12#
	1909.8	GSM	/	/	/	/	/	/
Body Back (0mm)	1850.2	GPRS	29.26	29.5	1.057	0.806	<b>0.85</b>	13#
	1880	GPRS	29.25	29.5	1.059	0.779	0.82	14#
	1909.8	GPRS	29.23	29.5	1.064	0.685	0.73	15#
Body Left (0mm)	1850.2	GPRS	/	/	/	/	/	/
	1880	GPRS	29.25	29.5	1.059	0.113	0.12	16#
	1909.8	GPRS	/	/	/	/	/	/
Body Right (0mm)	1850.2	GPRS	/	/	/	/	/	/
	1880	GPRS	29.25	29.5	1.059	0.059	0.06	17#
	1909.8	GPRS	/	/	/	/	/	/
Body Bottom (0mm)	1850.2	GPRS	/	/	/	/	/	/
	1880	GPRS	29.25	29.5	1.059	0.013	0.01	18#
	1909.8	GPRS	/	/	/	/	/	/

**Note:**

1. The EUT transmit and receive through the same GSM antenna while testing SAR.
2. When SAR or MPE is not measured at the maximum power level allowed for production units, the results must be scaled to the maximum tune-up tolerance limit according to the power applied to the individual channels tested to determine compliance.
3. When the maximum output power variation across the required test channels is > 0.5 dB, instead of the middle channel, the highest output power channel must be used.
4. The Multi-slot Classes of EUT is Class 12 which has maximum 4 Downlink slots and 4 Uplink slots, the maximum active slots is 5, when perform the multiple slots scan, 3DL+2UL is the worst case.

**LTE Band 5 :**

EUT Position	Frequency (MHz)	Bandwidth (MHz)	Test Mode	Max. Meas. Power (dBm)	Max. Rated Power (dBm)	1g SAR (W/kg)			
						Scaled Factor	Meas. SAR	Scaled SAR	Plot
Head Mode	829	10	1RB	/	/	/	/	/	/
	836.5	10	1RB	23.11	23.5	1.094	0.22	<b>0.24</b>	19#
	844	10	1RB	/	/	/	/	/	/
	836.5	10	50%RB	23.05	23.5	1.109	0.198	0.22	20#
Body Back (0mm)	829	10	1RB	23.36	23.5	1.033	1.02	1.05	21#
	836.5	10	1RB	23.11	23.5	1.094	0.98	1.07	22#
	844	10	1RB	23.24	23.5	1.062	1.02	<b>1.08</b>	23#
	829	10	50%RB	23.21	23.5	1.069	0.828	0.89	24#
	836.5	10	50%RB	23.28	23.5	1.052	0.834	0.88	25#
	844	10	50%RB	23.24	23.5	1.062	0.81	0.86	26#
	836.5	10	100%RB	23.11	23.5	1.094	0.793	0.87	27#
Body Left (0mm)	829	10	1RB	/	/	/	/	/	/
	836.5	10	1RB	23.11	23.5	1.094	0.059	0.06	28#
	844	10	1RB	/	/	/	/	/	/
	836.5	10	50%RB	23.05	23.5	1.109	0.049	0.05	29#
Body Right (0mm)	829	10	1RB	/	/	/	/	/	/
	836.5	10	1RB	23.11	23.5	1.094	0.205	0.22	30#
	844	10	1RB	/	/	/	/	/	/
	836.5	10	50%RB	23.05	23.5	1.109	0.168	0.19	31#
Body Bottom (0mm)	829	10	1RB	23.36	23.5	1.033	0.956	0.99	32#
	836.5	10	1RB	23.11	23.5	1.094	0.857	0.94	33#
	844	10	1RB	23.24	23.5	1.062	0.838	0.89	34#
	836.5	10	50%RB	23.28	23.5	1.052	0.733	0.77	35#
	836.5	10	100%RB	23.11	23.5	1.094	0.676	0.74	36#

**LTE Band 40A :**

EUT Position	Frequency (MHz)	Bandwidth (MHz)	Test Mode	Max. Meas. Power (dBm)	Max. Rated Power (dBm)	1g SAR (W/kg)			
						Scaled Factor	Meas. SAR	Scaled SAR	Plot
Head Mode	2310	10	1RB	22.36	22.5	1.033	0.209	<b>0.22</b>	37#
	2310	10	50%RB	22.45	22.5	1.012	0.151	0.15	38#
Body Back (0mm)	2310	10	1RB	22.36	22.5	1.033	0.726	<b>0.75</b>	39#
	2310	10	50%RB	22.45	22.5	1.012	0.567	0.57	40#
Body Left (0mm)	2310	10	1RB	22.36	22.5	1.033	0.034	0.04	41#
	2310	10	50%RB	22.45	22.5	1.012	0.026	0.03	42#
Body Right (0mm)	2310	10	1RB	22.36	22.5	1.033	0.089	0.09	43#
	2310	10	50%RB	22.45	22.5	1.012	0.071	0.07	44#
Body Bottom (0mm)	2310	10	1RB	22.36	22.5	1.033	0.712	0.74	45#
	2310	10	50%RB	22.45	22.5	1.012	0.556	0.56	46#

**LTE Band 40B :**

EUT Position	Frequency (MHz)	Bandwidth (MHz)	Test Mode	Max. Meas. Power (dBm)	Max. Rated Power (dBm)	1g SAR (W/kg)			
						Scaled Factor	Meas. SAR	Scaled SAR	Plot
Head Mode	2355	10	1RB	21.73	22.0	1.064	0.148	<b>0.16</b>	47#
	2355	10	50%RB	21.82	22.0	1.042	0.109	0.11	48#
Body Back (0mm)	2355	10	1RB	21.73	22.0	1.064	0.355	0.38	49#
	2355	10	50%RB	21.82	22.0	1.042	0.311	0.32	50#
Body Left (0mm)	2355	10	1RB	21.73	22.0	1.064	0.00602	0.01	51#
	2355	10	50%RB	21.82	22.0	1.042	0.00584	0.01	52#
Body Right (0mm)	2355	10	1RB	21.73	22.0	1.064	0.266	0.28	53#
	2355	10	50%RB	21.82	22.0	1.042	0.286	0.30	54#
Body Bottom (0mm)	2355	10	1RB	21.73	22.0	1.064	0.367	<b>0.39</b>	55#
	2355	10	50%RB	21.82	22.0	1.042	0.325	0.34	56#

**LTE Band 41 :**

EUT Position	Frequency (MHz)	Bandwidth (MHz)	Test Mode	Max. Meas. Power (dBm)	Max. Rated Power (dBm)	1g SAR (W/kg)			
						Scaled Factor	Meas. SAR	Scaled SAR	Plot
Head Mode	2545	20	1RB	/	/	/	/	/	/
	2570	20	1RB	/	/	/	/	/	/
	2595	20	1RB	23.12	23.5	1.091	0.186	<b>0.20</b>	57#
	2620	20	1RB	/	/	/	/	/	/
	2645	20	1RB	/	/	/	/	/	/
	2595	20	50%RB	23.01	23.5	1.119	0.144	0.16	58#
Body Back (0mm)	2545	20	1RB	23.06	23.5	1.107	0.319	0.35	59#
	2570	20	1RB	23.16	23.5	1.081	0.733	0.79	60#
	2595	20	1RB	23.12	23.5	1.091	0.838	0.91	61#
	2620	20	1RB	23.01	23.5	1.119	0.933	1.04	62#
	2645	20	1RB	22.98	23.5	1.127	0.978	1.1	63#
	2595	20	50%RB	23.16	23.5	1.081	0.669	0.72	64#
	2595	20	100%RB	22.96	23.5	1.132	0.692	0.78	65#
Body Left (0mm)	2545	20	1RB	/	/	/	/	/	/
	2570	20	1RB	/	/	/	/	/	/
	2595	20	1RB	23.12	23.5	1.091	0.021	0.02	66#
	2620	20	1RB	/	/	/	/	/	/
	2645	20	1RB	/	/	/	/	/	/
	2595	20	50%RB	23.01	23.5	1.119	0.016	0.02	67#
Body Right (0mm)	2545	20	1RB	/	/	/	/	/	/
	2570	20	1RB	/	/	/	/	/	/
	2595	20	1RB	23.12	23.5	1.091	0.353	0.39	68#
	2620	20	1RB	/	/	/	/	/	/
	2645	20	1RB	/	/	/	/	/	/
	2595	20	50%RB	23.01	23.5	1.119	0.278	0.31	69#
Body Bottom (0mm)	2545	20	1RB	23.06	23.5	1.107	0.49	0.54	70#
	2570	20	1RB	23.16	23.5	1.081	0.967	1.05	71#
	2595	20	1RB	23.12	23.5	1.091	1.02	1.11	72#
	2620	20	1RB	23.01	23.5	1.119	1.05	1.17	73#
	2645	20	1RB	22.98	23.5	1.127	1.07	<b>1.21</b>	74#
	2595	20	50%RB	23.16	23.5	1.081	0.673	0.73	75#
	2595	20	100%RB	22.96	23.5	1.132	0.695	0.79	76#

**Note:**

1. When the 1-g SAR is  $\leq 0.8\text{W/Kg}$ , testing for other channels are optional.
2. SAR for LTE band exposure configurations is measured according to the procedures of KDB 941225 D05 SAR for LTE Devices v02.
3. KDB941225D05-SAR for higher order modulation is required only when the highest maximum output power for the configuration in the higher order modulation is  $> 0.5\text{ dB}$  higher than the same configuration in QPSK or when the reported SAR for the QPSK configuration is  $> 1.45\text{ W/kg}$



4. KDB941225D05-For QPSK with 100% RB allocation, when the reported SAR measured for the Highest output power channel is  $<1.45$  W/kg, tests for the remaining required test channels are optional.
5. KDB941225D05- For QPSK with 100% RB allocation, SAR is not required when the highest maximum output power for 100 % RB allocation is less than the highest maximum output power in 50% and 1 RB allocations and the highest reported SAR for 1 RB and 50% RB allocation are  $\leq 0.8$  W/kg.
6. KDB941225D05- Start with the largest channel bandwidth and measure SAR for QPSK with 1 RB allocation, using the RB offset and required test channel combination with the highest maximum output power among RB offset the upper edge, middle and lower edge of each required test channel.
7. KDB941225D05- other channel bandwidths SAR test is required when the highest maximum output power of a configuration requiring testing in the smaller channel bandwidth is  $> 0.5$  dB higher than the equivalent channel configurations in the largest channel bandwidth configuration or the reported SAR of a configuration for the largest channel bandwidth is  $> 1.45$  W/kg.
8. Worst case SAR for 50% RB allocation is selected to be tested.

**WLAN 2.4G:**

EUT Position	Frequency (MHz)	Test Mode	Max. Meas. Power (dBm)	Max. Rated Power (dBm)	1g SAR (W/kg)				
					Scaled Factor	Duty Cycle (%)	Meas. SAR	Scaled SAR	Plot
Head Left Cheek	2412	802.11b	/	/	/	/	/	/	/
	2437	802.11b	16.93	17.5	1.140	100	0.055	0.06	77#
	2462	802.11b	/	/	/	/	/	/	/
Head Left Tilt	2412	802.11b	/	/	/	/	/	/	/
	2437	802.11b	16.93	17.5	1.140	100	0.057	0.06	78#
	2462	802.11b	/	/	/	/	/	/	/
Head Right Cheek	2412	802.11b	/	/	/	/	/	/	/
	2437	802.11b	16.93	17.5	1.140	100	0.036	0.04	79#
	2462	802.11b	/	/	/	/	/	/	/
Head Right Tilt	2412	802.11b	/	/	/	/	/	/	/
	2437	802.11b	16.93	17.5	1.140	100	0.027	0.03	80#
	2462	802.11b	/	/	/	/	/	/	/
Body Back (0mm)	2412	802.11b	/	/	/	/	/	/	/
	2437	802.11b	16.93	17.5	1.140	100	0.249	<b>0.28</b>	81#
	2462	802.11b	/	/	/	/	/	/	/
Body Top (0mm)	2412	802.11b	/	/	/	/	/	/	/
	2437	802.11b	16.93	17.5	1.140	100	0.081	0.09	82#
	2462	802.11b	/	/	/	/	/	/	/

**Note:**

1. When the 1-g SAR is  $\leq 0.8\text{W/Kg}$ , testing for other channels are optional.
2. When the highest *reported* SAR for DSSS is adjusted by the ratio of OFDM to DSSS specified maximum output power and the adjusted SAR is  $\leq 1.2\text{ W/kg}$ , OFDM SAR is not required.
3. When SAR or MPE is not measured at the maximum power level allowed for production units, the results must be scaled to the maximum tune-up tolerance limit according to the power applied to the individual channels tested to determine compliance.
4. According 2016 Oct. TCB, for SAR testing of 2.4G WIFI 802.11b signal with non-100% duty cycle, the measured SAR is scaled-up by the duty cycle scaling factor which is equal to "1/(duty cycle)".

**U-NII-2A:**

EUT Position	Frequency (MHz)	Test Mode	Max. Meas. Power (dBm)	Max. Rated Power (dBm)	1g SAR (W/kg)				
					Scaled Factor	Duty Cycle (%)	Meas. SAR	Scaled SAR	Plot
Head Left Cheek	5260	802.11a	/	/	/	/	/	/	/
	5280	802.11a	9.82	10.0	1.042	100	0.052	0.05	83#
	5320	802.11a	/	/	/	/	/	/	/
Head Left Tilt	5260	802.11a	/	/	/	/	/	/	/
	5280	802.11a	9.82	10.0	1.042	100	0.049	0.05	84#
	5320	802.11a	/	/	/	/	/	/	/
Head Right Cheek	5260	802.11a	/	/	/	/	/	/	/
	5280	802.11a	9.82	10.0	1.042	100	0.043	0.04	85#
	5320	802.11a	/	/	/	/	/	/	/
Head Right Tilt	5260	802.11a	/	/	/	/	/	/	/
	5280	802.11a	9.82	10.0	1.042	100	0.355	<b>0.37</b>	86#
	5320	802.11a	/	/	/	/	/	/	/
Body Back (0mm)	5260	802.11a	/	/	/	/	/	/	/
	5280	802.11a	9.82	10.0	1.042	100	0.138	0.14	87#
	5320	802.11a	/	/	/	/	/	/	/
Body Top (0mm)	5260	802.11a	/	/	/	/	/	/	/
	5280	802.11a	9.82	10.0	1.042	100	0.081	0.08	88#
	5320	802.11a	/	/	/	/	/	/	/

**Note:**

When the same maximum output power is specified for both bands, begin SAR measurement in U-NII-2A band by applying the OFDM SAR requirements. If the highest reported SAR for a test configuration is  $\leq 1.2$  W/kg, SAR is not required for U-NII-1 band for that configuration (802.11 mode and exposure condition); otherwise, each band is tested independently for SAR.

**U-NII-3:**

EUT Position	Frequency (MHz)	Test Mode	Max. Meas. Power (dBm)	Max. Rated Power (dBm)	1g SAR (W/kg)				
					Scaled Factor	Duty Cycle (%)	Meas. SAR	Scaled SAR	Plot
Head Left Cheek	5745	802.11a	/	/	/	/	/	/	/
	5785	802.11a	7.97	8.5	1.130	100	0.065	0.07	89#
	5825	802.11a	/	/	/	/	/	/	/
Head Left Tilt	5745	802.11a	/	/	/	/	/	/	/
	5785	802.11a	7.97	8.5	1.130	100	0.06	0.07	90#
	5825	802.11a	/	/	/	/	/	/	/
Head Right Cheek	5745	802.11a	/	/	/	/	/	/	/
	5785	802.11a	7.97	8.5	1.130	100	0.05	0.06	91#
	5825	802.11a	/	/	/	/	/	/	/
Head Right Tilt	5745	802.11a	/	/	/	/	/	/	/
	5785	802.11a	7.97	8.5	1.130	100	0.052	0.06	92#
	5825	802.11a	/	/	/	/	/	/	/
Body Back (0mm)	5745	802.11a	/	/	/	/	/	/	/
	5785	802.11a	7.97	8.5	1.130	100	0.164	<b>0.19</b>	93#
	5825	802.11a	/	/	/	/	/	/	/
Body Top (0mm)	5745	802.11a	/	/	/	/	/	/	/
	5785	802.11a	7.97	8.5	1.130	100	0.106	0.12	94#
	5825	802.11a	/	/	/	/	/	/	/

**Note:**

1. When the SAR value is less than half of the limit, testing for other channels are optional.
2. When SAR or MPE is not measured at the maximum power level allowed for production units, the results must be scaled to the maximum tune-up tolerance limit according to the power applied to the individual channels tested to determine compliance
3. According 2016 Oct. TCB, for SAR testing of 5G WIFI 802.11a signal with non-100% duty cycle, the measured SAR is scaled-up by the duty cycle scaling factor which is equal to "1/(duty cycle)".

## 9. Measurement Variability

In accordance with published RF Exposure KDB procedure 865664 D01 SAR measurement 100 MHz to 6 GHz v01. These additional measurements are repeated after the completion of all measurements requiring the same head or body tissue-equivalent medium in a frequency band. The test device should be returned to ambient conditions (normal room temperature) with the battery fully charged before it is re-mounted on the device holder for the repeated measurement(s) to minimize any unexpected variations in the repeated results

- 1) Repeated measurement is not required when the original highest measured SAR is  $< 0.80$  W/kg; steps 2) through 4) do not apply.
- 2) When the original highest measured SAR is  $\geq 0.80$  W/kg, repeat that measurement once.
- 3) Perform a second repeated measurement only if the ratio of largest to smallest SAR for the original and first repeated measurements is  $> 1.20$  or when the original or repeated measurement is  $\geq 1.45$  W/kg ( $\sim 10\%$  from the 1-g SAR limit).
- 4) Perform a third repeated measurement only if the original, first or second repeated measurement is  $\geq 1.5$  W/kg and the ratio of largest to smallest SAR for the original, first and second repeated measurements is  $> 1.20$ .

*Note: The same procedures should be adapted for measurements according to extremity and occupational exposure limits by applying a factor of 2.5 for extremity exposure and a factor of 5 for occupational exposure to the corresponding SAR thresholds.*

### The Highest Measured SAR Configuration in Each Frequency Band Head

SAR probe calibration point	Frequency Band	Freq.(MHz)	EUT Position	Meas. SAR (W/kg)		Largest to Smallest SAR Ratio
				Original	Repeated	
/	/	/	/	/	/	/

### Body

SAR probe calibration point	Frequency Band	Freq.(MHz)	EUT Position	Meas. SAR (W/kg)		Largest to Smallest SAR Ratio
				Original	Repeated	
750 MHz (650-850MHz)	LTE Band 5	829	Body Back	1.02	0.994	1.03
1900 MHz (1850-2000MHz)	PCS1900	1850.2	Body Back	0.806	0.785	1.03
2600 MHz (2550-2700MHz)	LTE Band 41	2645	Body Bottom	1.07	1.01	1.06

### Note:

1. Second Repeated Measurement is not required since the ratio of the largest to smallest SAR for the original and first repeated measurement is not  $> 1.20$ .
2. The measured SAR results **do not** have to be scaled to the maximum tune-up tolerance to determine if repeated measurements are required.
3. SAR measurement variability must be assessed for each frequency band, which is determined by the **SAR probe calibration point and tissue-equivalent medium** used for the device measurements.

## 10. SAR SIMULTANEOUS TRANSMISSION DESCRIPTION

### Simultaneous Transmission:

Description of Simultaneous Transmit Capabilities		
Transmitter Combination	Simultaneous?	Hotspot?
WWAN(GSM/LTE)Antenna + WLAN 2.4G/5G	√	√
WWAN(GSM/LTE) Antenna + Bluetooth	√	×
2.4G/5G WLAN+ BT	×	×

### Simultaneous SAR test exclusion considerations:

Mode(SAR1+SAR2)	Position	Reported SAR(W/kg)		ΣSAR <1.6W/kg
		SAR1	SAR2	
WWAN+WLAN 2.4G	Head	0.41	0.06	0.47
	Body	1.21	0.28	1.49
WWAN+WLAN 5G	Head	0.41	0.37	0.78
	Body	1.21	0.19	1.40
WWAN+BT	Head	0.41	0.33	0.74
	Body	1.21	0.33	<b>1.54</b>

### Conclusion:

Sum of SAR:  $\Sigma \text{SAR} \leq 1.6 \text{ W/kg}$  therefore simultaneous transmission SAR with Volume Scans is **not required**.

## 11. SAR Plots

---

**Please Refer to the Attachment.**

## APPENDIX A MEASUREMENT UNCERTAINTY

The uncertainty budget has been determined for the measurement system and is given in the following Table.

### Measurement uncertainty evaluation for IEEE1528-2013 SAR test

Source of uncertainty	Tolerance/ uncertainty ± %	Probability distribution	Divisor	ci (1 g)	ci (10 g)	Standard uncertainty ± %, (1 g)	Standard uncertainty ± %, (10 g)
<b>Measurement system</b>							
Probe calibration	6.55	N	1	1	1	6.3	6.3
Axial Isotropy	4.7	R	$\sqrt{3}$	1	1	2.7	2.7
Hemispherical Isotropy	9.6	R	$\sqrt{3}$	0	0	0.0	0.0
Boundary effect	1.0	R	$\sqrt{3}$	1	1	0.6	0.6
Linearity	4.7	R	$\sqrt{3}$	1	1	2.7	2.7
Detection limits	1.0	R	$\sqrt{3}$	1	1	0.6	0.6
Readout electronics	0.3	N	1	1	1	0.3	0.3
Response time	0.0	R	$\sqrt{3}$	1	1	0.0	0.0
Integration time	0.0	R	$\sqrt{3}$	1	1	0.0	0.0
RF ambient conditions – noise	1.0	R	$\sqrt{3}$	1	1	0.6	0.6
RF ambient conditions– reflections	1.0	R	$\sqrt{3}$	1	1	0.6	0.6
Probe positioner mech. Restrictions	0.8	R	$\sqrt{3}$	1	1	0.5	0.5
Probe positioning with respect to phantom shell	6.7	R	$\sqrt{3}$	1	1	3.9	3.9
Post-processing	2.0	R	$\sqrt{3}$	1	1	1.2	1.2
<b>Test sample related</b>							
Test sample positioning	2.8	N	1	1	1	2.8	2.8
Device holder uncertainty	6.3	N	1	1	1	6.3	6.3
Drift of output power	5.0	R	$\sqrt{3}$	1	1	2.9	2.9
<b>Phantom and set-up</b>							
Phantom uncertainty (shape and thickness tolerances)	4.0	R	$\sqrt{3}$	1	1	2.3	2.3
Liquid conductivity target)	5.0	R	$\sqrt{3}$	0.64	0.43	1.8	1.2
Liquid conductivity meas.)	2.5	N	1	0.64	0.43	1.6	1.1
Liquid permittivity target)	5.0	R	$\sqrt{3}$	0.6	0.49	1.7	1.4
Liquid permittivity meas.)	2.5	N	1	0.6	0.49	1.5	1.2
Combined standard uncertainty		RSS				12.2	12.0
Expanded uncertainty 95 % confidence interval)						24.1	23.7



## Measurement uncertainty evaluation for IEC62209-1 SAR test

Source of uncertainty	Tolerance/ uncertainty ± %	Probability distribution	Divisor	ci (1 g)	ci (10 g)	Standard uncertainty ± %, (1 g)	Standard uncertainty ± %, (10 g)
<b>Measurement system</b>							
Probe calibration	6.55	N	1	1	1	6.3	6.3
Axial Isotropy	4.7	R	$\sqrt{3}$	1	1	2.7	2.7
Hemispherical Isotropy	9.6	R	$\sqrt{3}$	0	0	0.0	0.0
Boundary effect	1.0	R	$\sqrt{3}$	1	1	0.6	0.6
Linearity	4.7	R	$\sqrt{3}$	1	1	2.7	2.7
Detection limits	1.0	R	$\sqrt{3}$	1	1	0.6	0.6
Readout electronics	0.3	N	1	1	1	0.3	0.3
Response time	0.0	R	$\sqrt{3}$	1	1	0.0	0.0
Integration time	0.0	R	$\sqrt{3}$	1	1	0.0	0.0
RF ambient conditions – noise	1.0	R	$\sqrt{3}$	1	1	0.6	0.6
Probe positioning with respect to phantom shell	6.7	R	$\sqrt{3}$	1	1	3.9	3.9
Probe positioner mech. Restrictions	0.8	R	$\sqrt{3}$	1	1	0.5	0.5
RF ambient conditions– reflections	1.0	R	$\sqrt{3}$	1	1	0.6	0.6
Post-processing	2.0	R	$\sqrt{3}$	1	1	1.2	1.2
<b>Test sample related</b>							
Test sample positioning	2.8	N	1	1	1	2.8	2.8
Device holder uncertainty	6.3	N	1	1	1	6.3	6.3
Drift of output power	5.0	R	$\sqrt{3}$	1	1	2.9	2.9
<b>Phantom and set-up</b>							
Phantom uncertainty (shape and thickness tolerances)	4.0	R	$\sqrt{3}$	1	1	2.3	2.3
Liquid conductivity target)	5.0	R	$\sqrt{3}$	0.64	0.43	1.8	1.2
Liquid conductivity meas.)	2.5	N	1	0.64	0.43	1.6	1.1
Liquid permittivity target)	5.0	R	$\sqrt{3}$	0.6	0.49	1.7	1.4
Liquid permittivity meas.)	2.5	N	1	0.6	0.49	1.5	1.2
Combined standard uncertainty		RSS				12.2	12.0
Expanded uncertainty 95 % confidence interval)						24.0	23.6

## **APPENDIX B EUT TEST POSITION PHOTOS**

**Please Refer to the Attachment.**

## **APPENDIX C CALIBRATION CERTIFICATES**

**Please Refer to the Attachment.**

**\*\*\*\*\* END OF REPORT \*\*\*\*\***