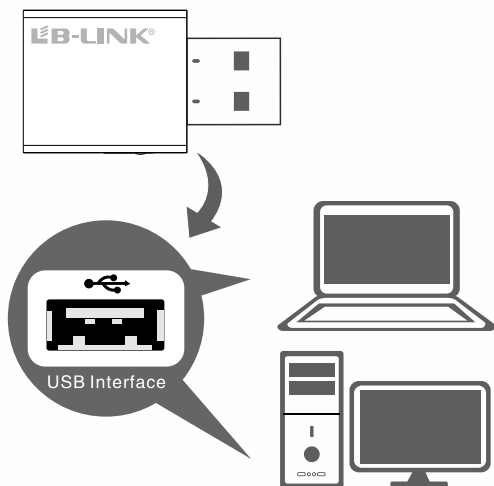


Quick Installation Guide

1200Mbps Wireless USB Adapter

Mode: BL-R8812RD3

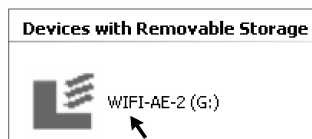
1. Hardware Installation



2. Software Installation

The software installation process under Windows XP/Vista / 8 is roughly the same, take Windows 7 system as an example.

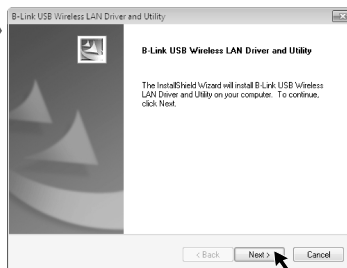
1



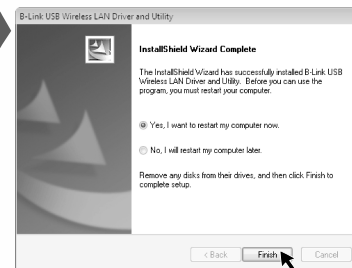
2



3

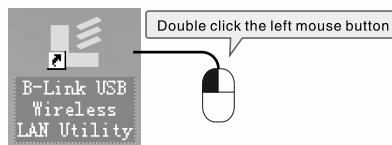


4

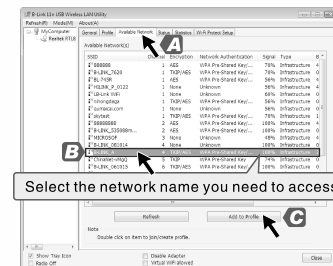


◆ Mode 1: Wireless network card access to the wireless network

1



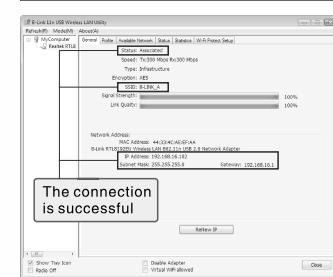
2



3



4



Note: The password should be the same as which set on the router or AP

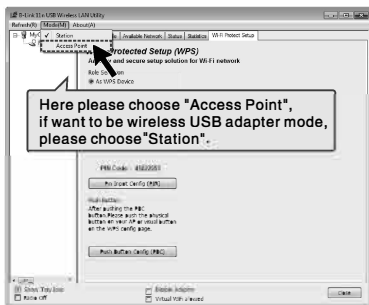
The connection is successful

◆ Mode 2: Wireless NIC set to AP

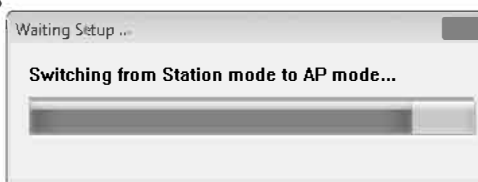
1 Before switch to AP mode, turn off the computer's firewall and other protective procedures.

Steps to close the firewall: click Start, select Setting, Control panel, then open Security center and click Windows firewall, select Close, at last click Apply.

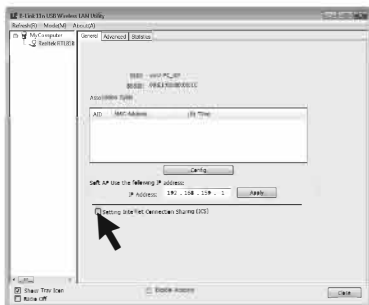
1



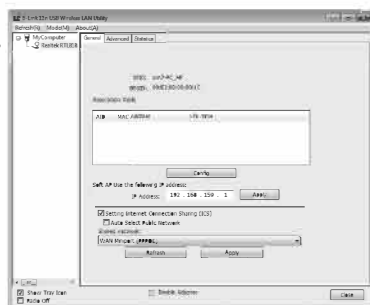
2



3



4



5



Config the AP's security.

Config the AP's SSID, Channel and Wireless network security.



◆ FCC Warning

This device complies with part 15 of the FCC rules. Operation is subject to the following two conditions: (1) this device may not cause harmful interference, and (2) this device must accept any interference received, including interference that may cause undesired operation.

Changes or modifications not expressly approved by the party responsible for compliance could void the user's authority to operate the equipment.

NOTE: This equipment has been tested and found to comply with the limits for a Class B digital device, pursuant to part 15 of the FCC Rules. These limits are designed to provide reasonable protection against harmful interference in a residential installation. This equipment generates uses and can radiate radio frequency energy and, if not installed and used in accordance with the instructions, may cause harmful interference to radio communications. However, there is no guarantee that interference will not occur in a particular installation. If this equipment does cause harmful interference to radio or television reception, which can be determined by turning the equipment off and on, the user is encouraged to try to correct the interference by one or more of the following measures:

Reorient or relocate the receiving antenna.

Increase the separation between the equipment and receiver.

Connect the equipment into an outlet on a circuit different from that to which the receiver is connected.

Consult the dealer or an experienced radio/TV technician for help.

Radiation Exposure Statement

The device has been evaluated to meet general RF exposure requirement. The device can be used in portable exposure condition without restriction.

Caution:

(i) The device for operation in the band 5150 - 5250 MHz is only for indoor use to reduce the potential for harmful interference to co-channel mobile satellite systems;