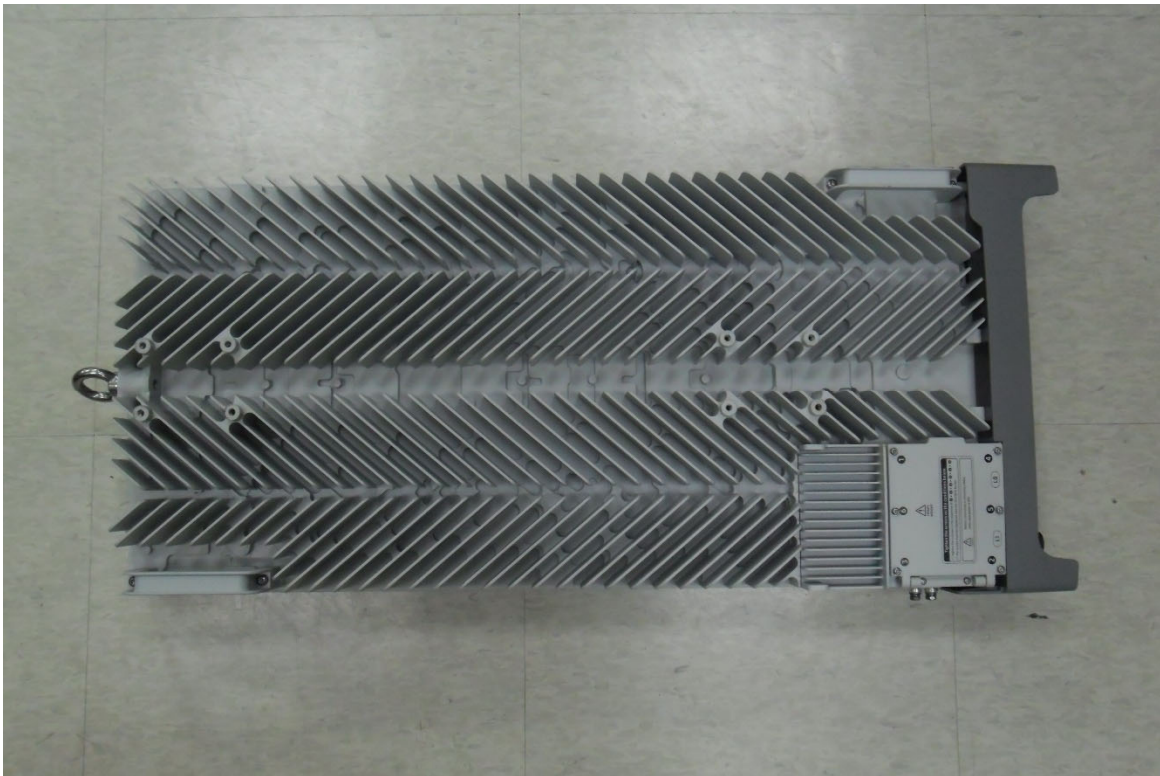


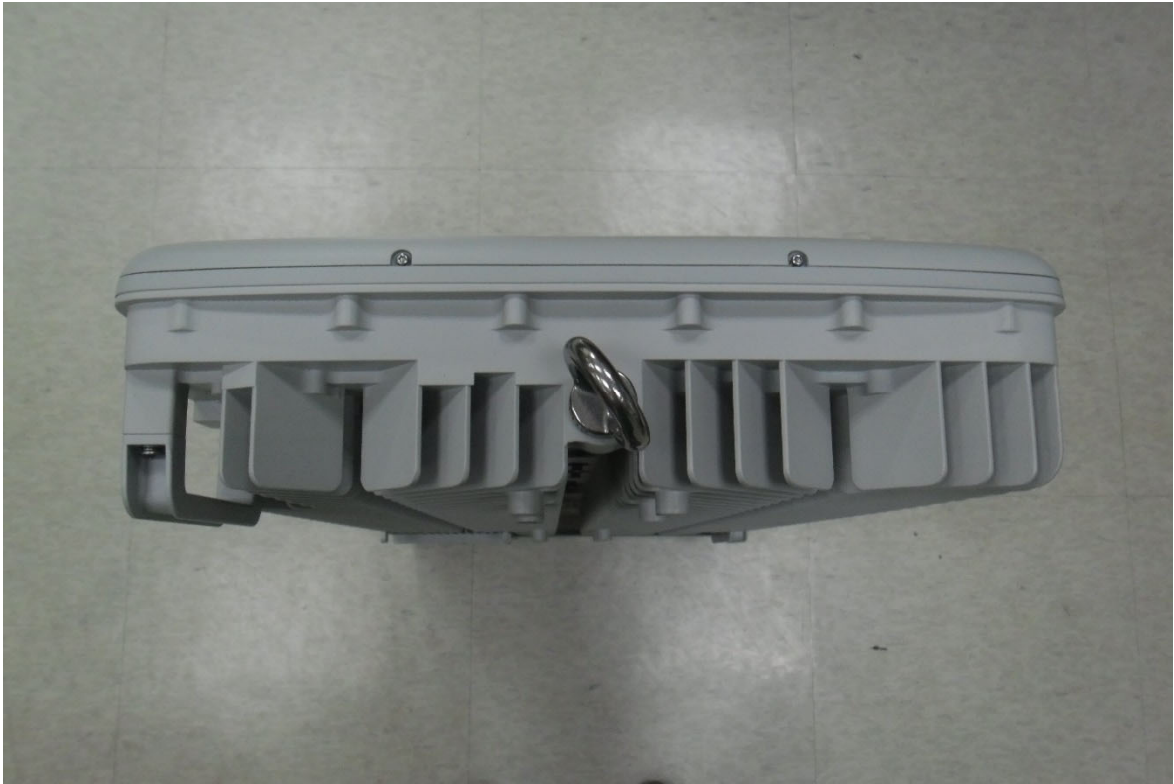
## External Photographs



Front



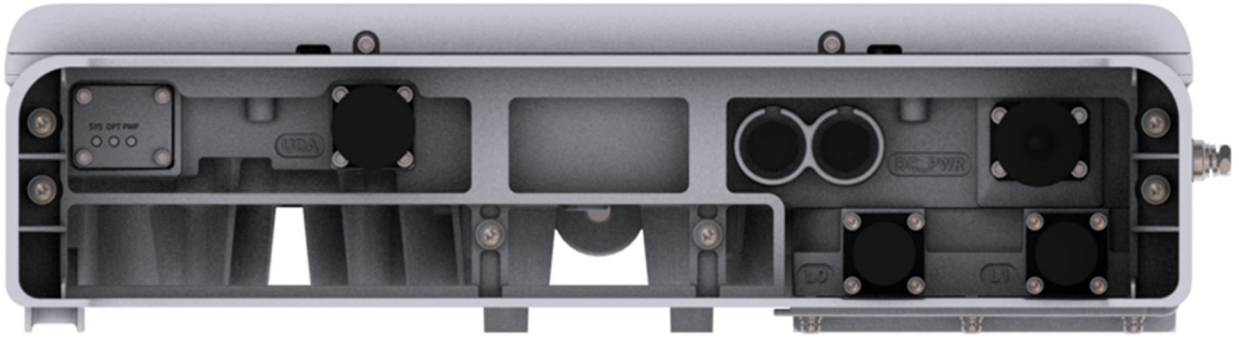
Rear



**Top**



## Bottom

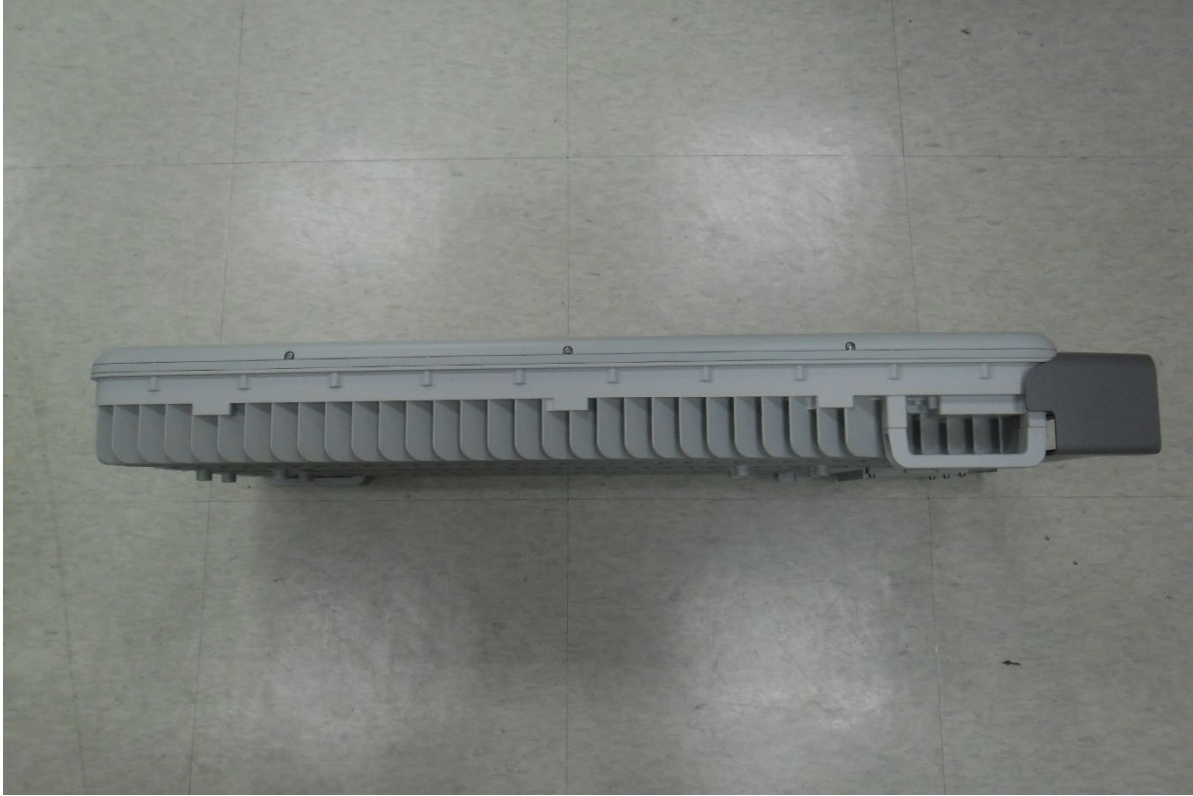


**Bottom**



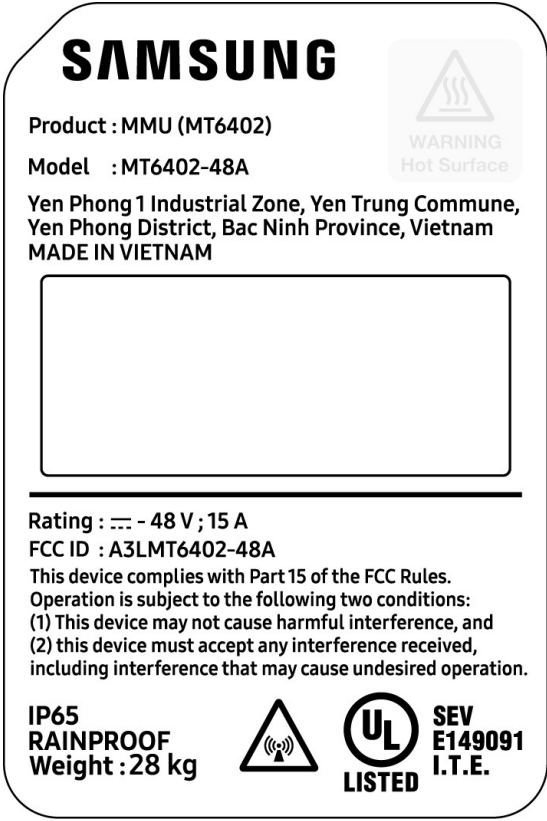


**Right Side**





**Left Side**

- Label and location

Label	Position
 <p><b>SAMSUNG</b></p> <p>Product : MMU (MT6402)</p> <p>Model : MT6402-48A</p> <p>Yen Phong 1 Industrial Zone, Yen Trung Commune, Yen Phong District, Bac Ninh Province, Vietnam MADE IN VIETNAM</p> <p>Rating : --- - 48 V; 15 A FCC ID : A3LMT6402-48A This device complies with Part 15 of the FCC Rules. Operation is subject to the following two conditions: (1) This device may not cause harmful interference, and (2) this device must accept any interference received, including interference that may cause undesired operation.</p> <p>IP65 RAINPROOF Weight : 28 kg</p> <p>UL LISTED SEV E149091 I.T.E.</p>	 
	<ul style="list-style-type: none"> <li>Label is laser printing on aluminum plate</li> <li>Label is attached to the side of the product by adhesive material</li> </ul>