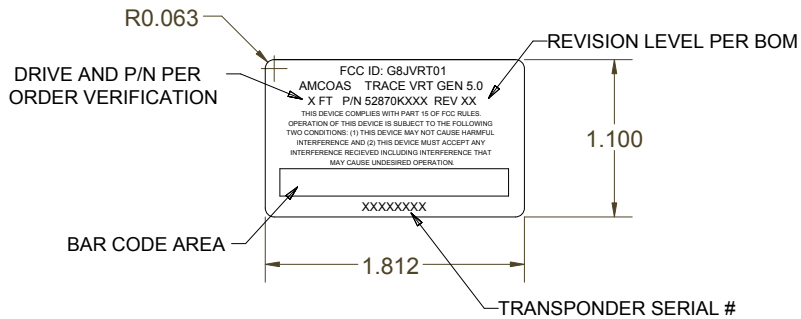


APPENDIX E: LABEL AND LABEL LOCATION



PHOTOGRAPH 1: LOCATION OF LABEL ON DEVICE

Please refer to the following page for the label sample.



REV	DESCRIPTION	DATE
A	INITIAL RELEASE	1/15/02
B	CHANGED MODEL TO TRACE VRT, ADDED P/N AND REV.	8/06/02

MATERIAL: WEATHER RESISTANT POLYIMIDE (KAPTON)
ADHESIVE: PERMANENT ACRYLIC
COLORS: BLACK COPY WITH A WHITE BACKGROUND
OEM P/N: BRADY THT-43-457-10, TYCO SA207-T2K-S OR
PERMACEL 45075

OLD DWG # N.A.		DRAWING RELEASE ECN #:		DRAWN smurray		12/12/2001		A MCO	
TOLERANCES-UNLESS OTHERWISE SPECIFIED <u>INCHES</u> <u>ANGLES</u> .X 1 .XX .02" .XXX .005" SURFACES w min		CHECKED						AUTOMATED SYSTEMS, LLC	
		QA						107 ERSKINE LANE SCOTT DEPOT, WV 25560 TEL: 304 757-3388 FAX: 304 757-3388	
		MFG						TITLE	
		APPROVED						LABEL, FCC, S/N, GAS, GEN 5	
THIS DOCUMENT IS THE PROPERTY OF THE AUTOMATED SYSTEMS BUSINESS UNIT, AND ITS SUBSTANCE IS CONFIDENTIAL AND PROPRIETARY. THE CONTENTS HEREOF SHALL NOT BE PUBLISHED OR DISCLOSED TO OUTSIDE PARTIES OR USED FOR THEIR BENEFIT WITHOUT THE WRITTEN AUTHORIZATION OF AUTOMATED SYSTEMS BUSINESS UNIT.						SIZE A		MATERIAL SEE NOTES	
						DWG NO 52870P015		REV	
						SCALE		SHEET OF	

