

## System Check\_H750

Frequency: 750 MHz; Duty Cycle: 1:1; Room Ambient Temperature: 23.0°C; Liquid

Temperature: 22.0°C

Medium parameters used:  $f = 750$  MHz;  $\sigma = 0.913$  S/m;  $\epsilon_r = 44.013$ ;  $\rho = 1000$  kg/m<sup>3</sup>

DASY5 Configuration:

- Area Scan Setting: Find Secondary Maximum Within: 2.0 dB and with a peak SAR value greater than 0.0012W/kg
- Electronics: DAE4 Sn1486; Calibrated: 2021/6/1
- Probe: EX3DV4 - SN7369; ConvF(10.16, 10.16, 10.16) @ 750 MHz; Calibrated: 2021/6/3
- Sensor-Surface: 2mm (Mechanical Surface Detection)
- Phantom: ELI V5.0 (20deg probe tilt); Type: QD OVA 002 AA; Serial: 1240

**Configuration/Pin=250mW/Area Scan (7x13x1):** Measurement grid: dx=15mm, dy=15mm

Maximum value of SAR (measured) = 2.76 W/kg

**Configuration/Pin=250mW/Zoom Scan (5x5x7)/Cube 0:** Measurement grid:

dx=8mm, dy=8mm, dz=5mm

Reference Value = 56.50 V/m; Power Drift = -0.01 dB

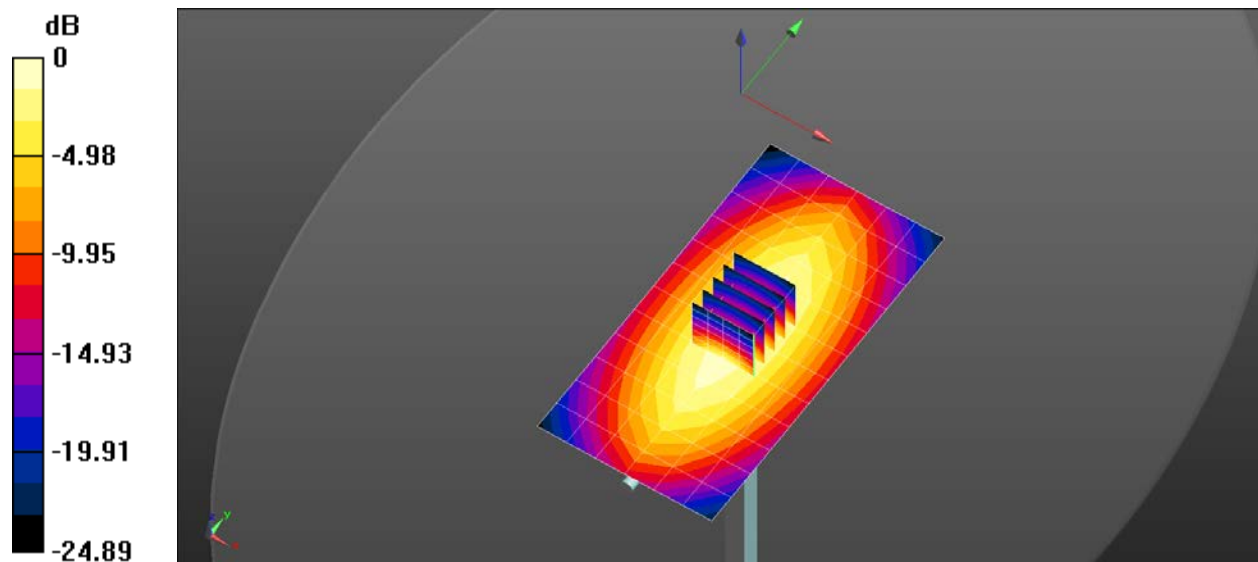
Peak SAR (extrapolated) = 3.21 W/kg

**SAR(1 g) = 2.21 W/kg; SAR(10 g) = 1.48 W/kg**

Smallest distance from peaks to all points 3 dB below = 21.5 mm

Ratio of SAR at M2 to SAR at M1 = 68.6%

Maximum value of SAR (measured) = 2.78 W/kg



0 dB = 2.76 W/kg = 4.41 dBW/kg

## System Check\_H900

Frequency: 900 MHz; Duty Cycle: 1:1; Room Ambient Temperature: 23.0°C; Liquid

Temperature: 22.0°C

Medium parameters used:  $f = 900$  MHz;  $\sigma = 0.967$  S/m;  $\epsilon_r = 42.004$ ;  $\rho = 1000$  kg/m<sup>3</sup>

DASY5 Configuration:

- Area Scan Setting: Find Secondary Maximum Within: 2.0 dB and with a peak SAR value greater than 0.0012W/kg
- Electronics: DAE4 Sn1486; Calibrated: 2021/6/1
- Probe: EX3DV4 - SN7369; ConvF(9.7, 9.7, 9.7) @ 900 MHz; Calibrated: 2021/6/3
- Sensor-Surface: 2mm (Mechanical Surface Detection)
- Phantom: ELI V5.0 (20deg probe tilt); Type: QD OVA 002 AA; Serial: 1240

**Configuration/Pin=250mW/Area Scan (7x13x1):** Measurement grid: dx=15mm, dy=15mm

Maximum value of SAR (measured) = 3.59 W/kg

**Configuration/Pin=250mW/Zoom Scan (5x5x7)/Cube 0:** Measurement grid:

dx=8mm, dy=8mm, dz=5mm

Reference Value = 61.80 V/m; Power Drift = 0.04 dB

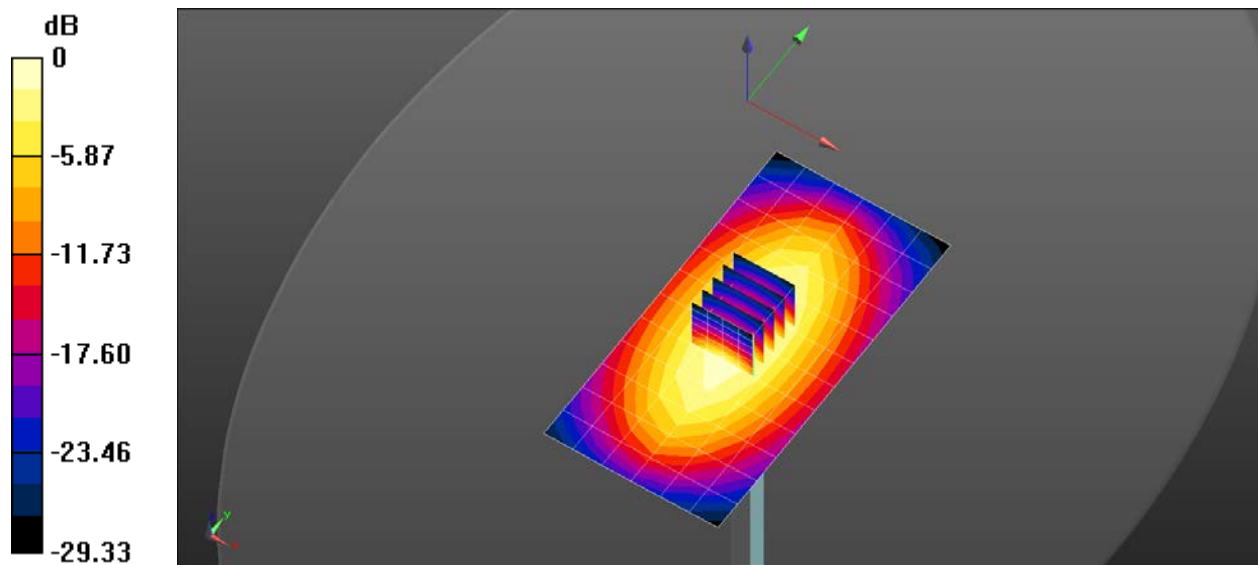
Peak SAR (extrapolated) = 4.29 W/kg

**SAR(1 g) = 2.86 W/kg; SAR(10 g) = 1.85 W/kg**

Smallest distance from peaks to all points 3 dB below = 16 mm

Ratio of SAR at M2 to SAR at M1 = 66.3%

Maximum value of SAR (measured) = 3.65 W/kg



## System Check\_H1800

Frequency: 1800 MHz; Duty Cycle: 1:1; Room Ambient Temperature: 23.0°C; Liquid Temperature: 22.0°C

Medium parameters used:  $f = 1800$  MHz;  $\sigma = 1.368$  S/m;  $\epsilon_r = 40.972$ ;  $\rho = 1000$  kg/m<sup>3</sup>

DASY5 Configuration:

- Area Scan Setting: Find Secondary Maximum Within: 2.0 dB and with a peak SAR value greater than 0.0012W/kg
- Electronics: DAE4 Sn1486; Calibrated: 2021/6/1
- Probe: EX3DV4 - SN7369; ConvF(8.6, 8.6, 8.6) @ 1800 MHz; Calibrated: 2021/6/3
- Sensor-Surface: 2mm (Mechanical Surface Detection)
- Phantom: ELI V5.0 (20deg probe tilt); Type: QD OVA 002 AA; Serial: 1240

**Configuration/Pin=250mW/Area Scan (7x7x1):** Measurement grid: dx=15mm, dy=15mm

Maximum value of SAR (measured) = 13.7 W/kg

**Configuration/Pin=250mW/Zoom Scan (5x5x7)/Cube 0:** Measurement grid:

dx=8mm, dy=8mm, dz=5mm

Reference Value = 102.3 V/m; Power Drift = -0.01 dB

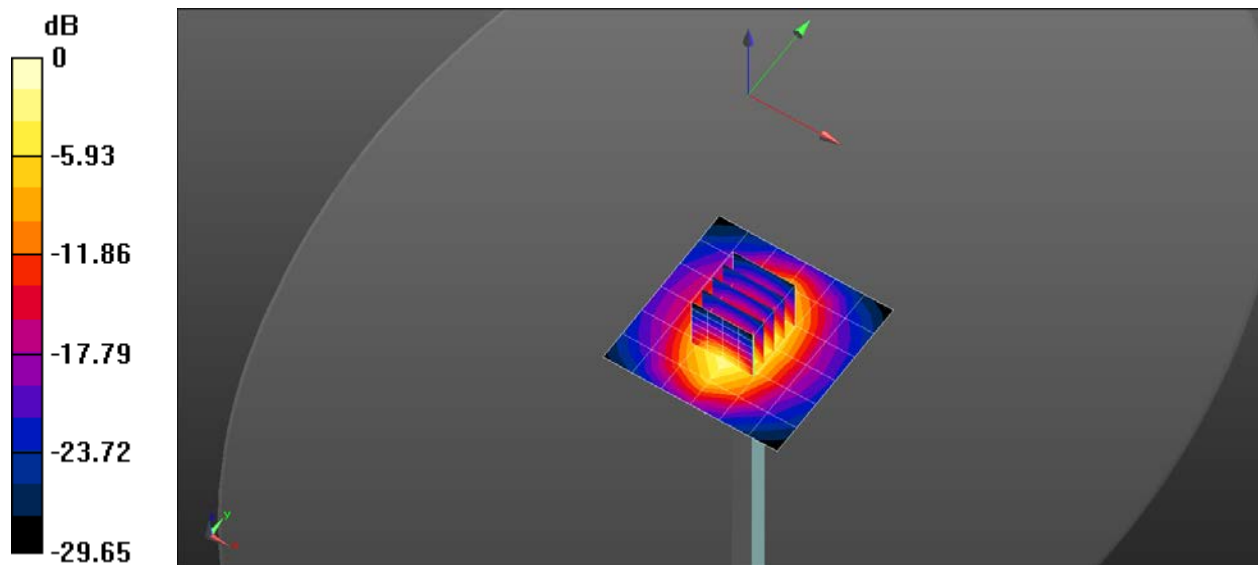
Peak SAR (extrapolated) = 17.5 W/kg

**SAR(1 g) = 9.62 W/kg; SAR(10 g) = 5.01 W/kg**

Smallest distance from peaks to all points 3 dB below = 10.7 mm

Ratio of SAR at M2 to SAR at M1 = 54.8%

Maximum value of SAR (measured) = 13.9 W/kg



0 dB = 13.7 W/kg = 11.38 dBW/kg

## System Check\_H1900

Frequency: 1900 MHz; Duty Cycle: 1:1; Room Ambient Temperature: 23.0°C; Liquid Temperature: 22.0°C

Medium parameters used:  $f = 1900$  MHz;  $\sigma = 1.412$  S/m;  $\epsilon_r = 41.154$ ;  $\rho = 1000$  kg/m<sup>3</sup>

DASY5 Configuration:

- Area Scan Setting: Find Secondary Maximum Within: 2.0 dB and with a peak SAR value greater than 0.0012W/kg
- Electronics: DAE4 Sn1486; Calibrated: 2021/6/1
- Probe: EX3DV4 - SN7369; ConvF(8.22, 8.22, 8.22) @ 1900 MHz; Calibrated: 2021/6/3
- Sensor-Surface: 1.4mm (Mechanical Surface Detection)
- Phantom: ELI V5.0 (20deg probe tilt); Type: QD OVA 002 AA; Serial: 1240

**Configuration/Pin=250mW/Area Scan (7x7x1):** Measurement grid: dx=15mm, dy=15mm

Maximum value of SAR (measured) = 14.4 W/kg

**Configuration/Pin=250mW/Zoom Scan (5x5x7)/Cube 0:** Measurement grid:

dx=8mm, dy=8mm, dz=5mm

Reference Value = 98.41 V/m; Power Drift = 0.02 dB

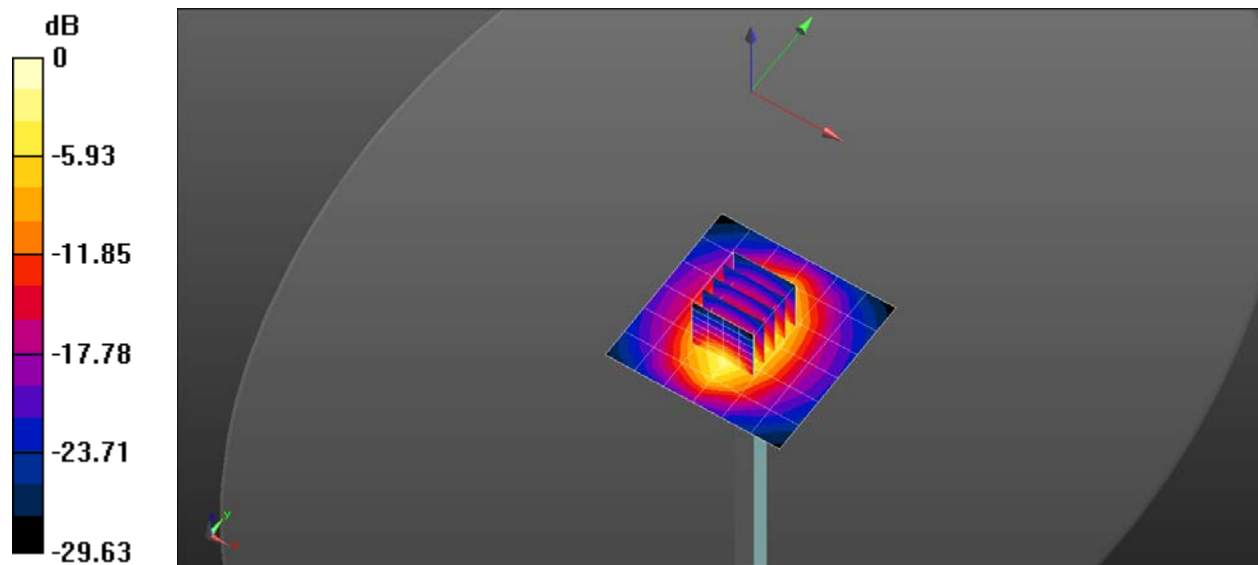
Peak SAR (extrapolated) = 17.4 W/kg

**SAR(1 g) = 9.67 W/kg; SAR(10 g) = 5.12 W/kg**

Smallest distance from peaks to all points 3 dB below = 10.1 mm

Ratio of SAR at M2 to SAR at M1 = 55.6%

Maximum value of SAR (measured) = 14.8 W/kg



0 dB = 14.4 W/kg = 11.58 dBW/kg

## System Check\_H2300

Frequency: 2300 MHz; Duty Cycle: 1:1; Room Ambient Temperature: 23.0°C; Liquid Temperature: 22.0°C

Medium parameters used:  $f = 2300$  MHz;  $\sigma = 1.682$  S/m;  $\epsilon_r = 40.908$ ;  $\rho = 1000$  kg/m<sup>3</sup>

DASY5 Configuration:

- Area Scan Setting: Find Secondary Maximum Within: 2.0 dB and with a peak SAR value greater than 0.0012W/kg
- Electronics: DAE4 Sn1486; Calibrated: 2021/6/1
- Probe: EX3DV4 - SN7369; ConvF(7.94, 7.94, 7.94) @ 2300 MHz; Calibrated: 2021/6/3
- Sensor-Surface: 2mm (Mechanical Surface Detection)
- Phantom: ELI V5.0 (20deg probe tilt); Type: QD OVA 002 AA; Serial: 1240

**Configuration/Pin=250mW/Area Scan (9x9x1):** Measurement grid: dx=12mm, dy=12mm

Maximum value of SAR (measured) = 18.4 W/kg

**Configuration/Pin=250mW/Zoom Scan (7x7x7)/Cube 0:** Measurement grid:

dx=5mm, dy=5mm, dz=5mm

Reference Value = 106.2 V/m; Power Drift = 0.04 dB

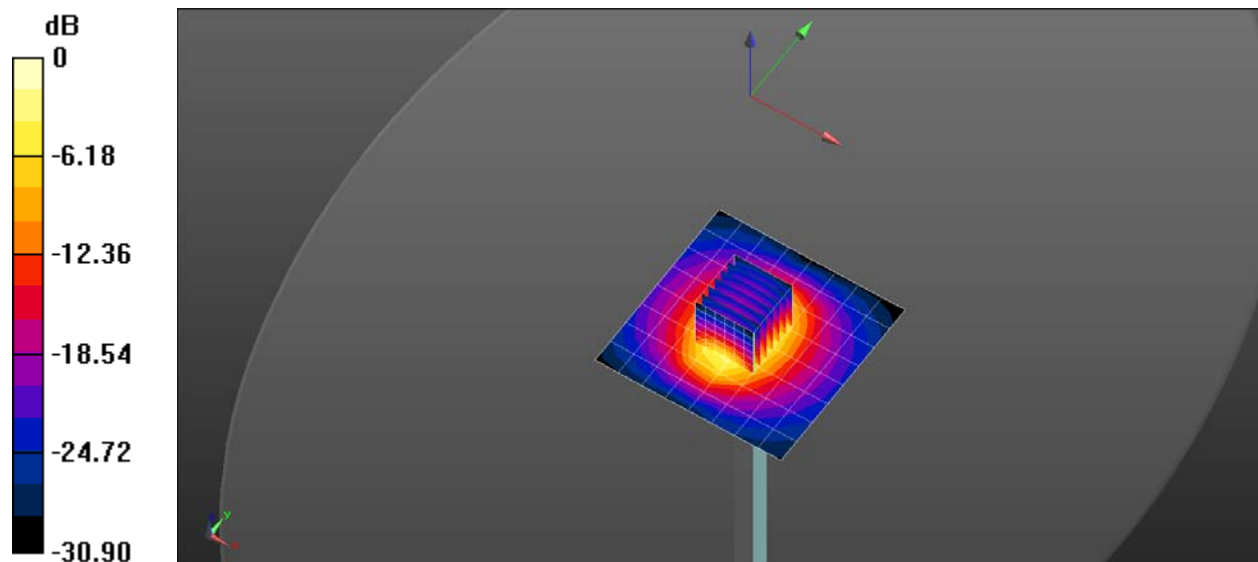
Peak SAR (extrapolated) = 25.8 W/kg

**SAR(1 g) = 13.1 W/kg; SAR(10 g) = 6.28 W/kg**

Smallest distance from peaks to all points 3 dB below = 9.2 mm

Ratio of SAR at M2 to SAR at M1 = 51.1%

Maximum value of SAR (measured) = 19.6 W/kg



0 dB = 18.4 W/kg = 12.65 dBW/kg

## System Check\_H2600

Frequency: 2600 MHz; Duty Cycle: 1:1; Room Ambient Temperature: 23.0°C; Liquid Temperature: 22.0°C

Medium parameters used:  $f = 2600$  MHz;  $\sigma = 1.919$  S/m;  $\epsilon_r = 38.858$ ;  $\rho = 1000$  kg/m<sup>3</sup>

DASY5 Configuration:

- Area Scan Setting: Find Secondary Maximum Within: 2.0 dB and with a peak SAR value greater than 0.0012W/kg
- Electronics: DAE4 Sn1486; Calibrated: 2021/6/1
- Probe: EX3DV4 - SN7369; ConvF(7.45, 7.45, 7.45) @ 2600 MHz; Calibrated: 2021/6/3
- Sensor-Surface: 2mm (Mechanical Surface Detection)
- Phantom: ELI V5.0 (20deg probe tilt); Type: QD OVA 002 AA; Serial: 1240

## System Performance Check at Frequencies above 1

**GHz/Pin=250mW/Area Scan (9x9x1):** Measurement grid: dx=12mm, dy=12mm

Maximum value of SAR (measured) = 23.4 W/kg

## System Performance Check at Frequencies above 1

**GHz/Pin=250mW/Zoom Scan (7x7x7)/Cube 0:** Measurement grid: dx=5mm, dy=5mm, dz=5mm

Reference Value = 112.7 V/m; Power Drift = 0.01 dB

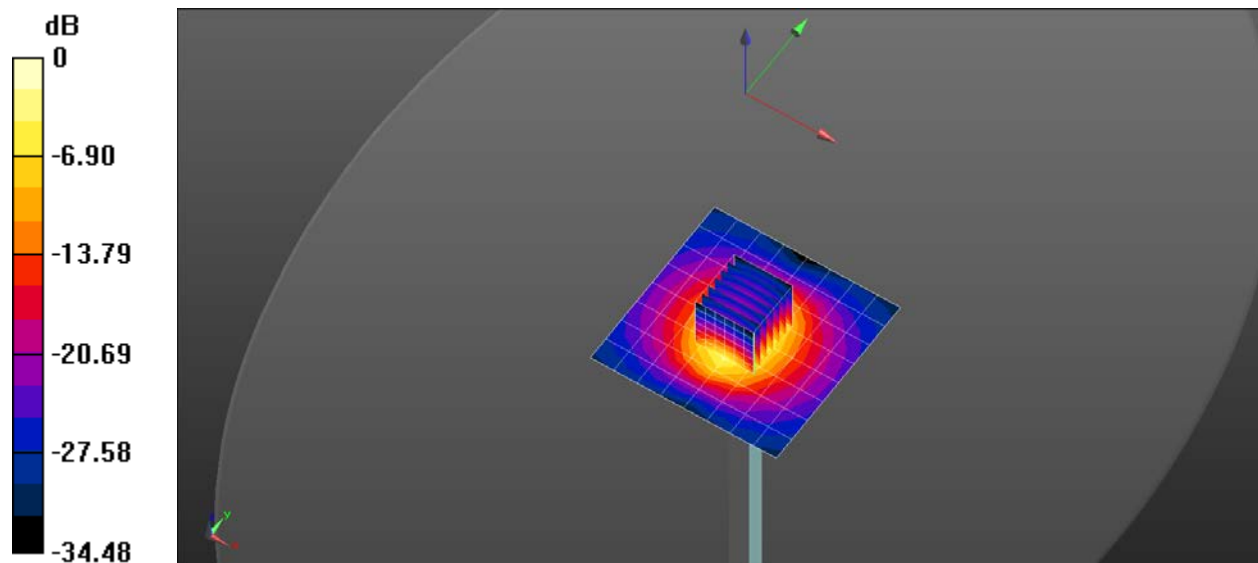
Peak SAR (extrapolated) = 32.8 W/kg

**SAR(1 g) = 14.7 W/kg; SAR(10 g) = 6.39 W/kg**

Smallest distance from peaks to all points 3 dB below = 9 mm

Ratio of SAR at M2 to SAR at M1 = 44.4%

Maximum value of SAR (measured) = 23.4 W/kg



0 dB = 23.4 W/kg = 13.69 dBW/kg

## System Check\_H3500

Frequency: 3500 MHz; Duty Cycle: 1:1; Room Ambient Temperature: 23.0°C; Liquid

Temperature: 22.0°C

Medium parameters used:  $f = 3500$  MHz;  $\sigma = 2.833$  S/m;  $\epsilon_r = 36.494$ ;  $\rho = 1000$  kg/m<sup>3</sup>

DASY5 Configuration:

- Area Scan Setting: Find Secondary Maximum Within: 2.0 dB and with a peak SAR value greater than 0.0012W/kg
- Electronics: DAE4 Sn1486; Calibrated: 2021/6/1
- Probe: EX3DV4 - SN7369; ConvF(6.9, 6.9, 6.9) @ 3500 MHz; Calibrated: 2021/6/3
- Sensor-Surface: 1.4mm (Mechanical Surface Detection (Locations From Previous Scan Used)), Sensor-Surface: 1.4mm (Mechanical Surface Detection)
- Phantom: ELI V5.0 (20deg probe tilt); Type: QD OVA 002 AA; Serial: 1240

**Configuration/Pin=100mW/Area Scan (10x10x1):** Measurement grid: dx=10mm, dy=10mm

Maximum value of SAR (measured) = 9.93 W/kg

**Configuration/Pin=100mW/Zoom Scan (7x7x12)/Cube 0:** Measurement grid: dx=4mm, dy=4mm, dz=2mm

Reference Value = 66.08 V/m; Power Drift = -0.01 dB

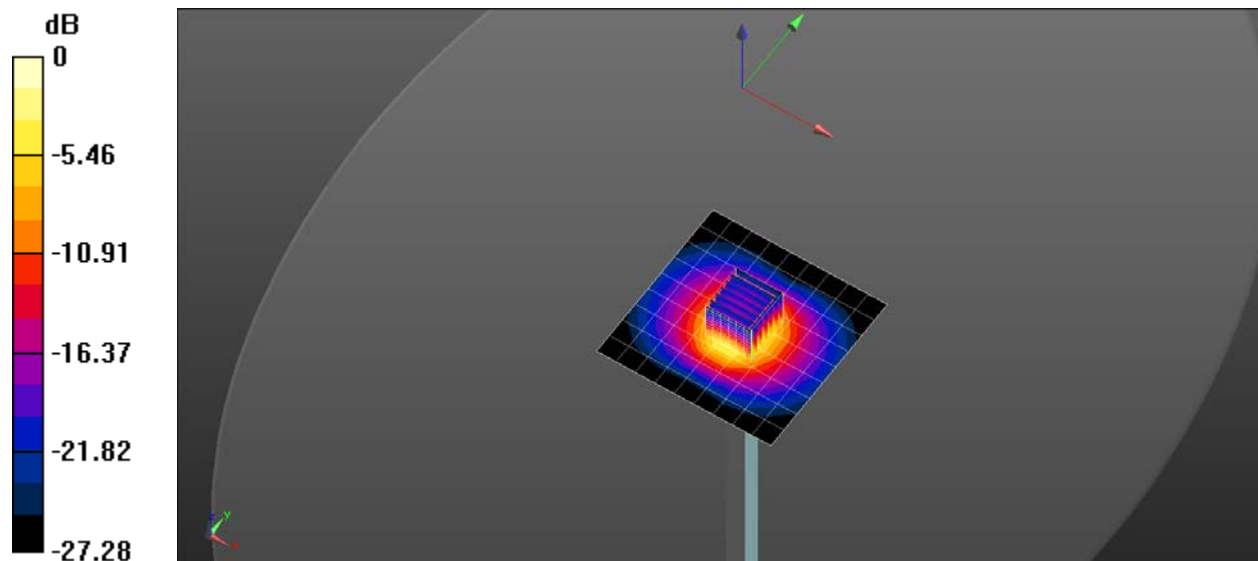
Peak SAR (extrapolated) = 18.8 W/kg

**SAR(1 g) = 6.42 W/kg; SAR(10 g) = 2.35 W/kg**

Smallest distance from peaks to all points 3 dB below = 8.8 mm

Ratio of SAR at M2 to SAR at M1 = 62.5%

Maximum value of SAR (measured) = 13.3 W/kg



0 dB = 13.3 W/kg = 11.24 dBW/kg

## System Check\_H3700

Frequency: 3700 MHz; Duty Cycle: 1:1; Room Ambient Temperature: 23.0°C; Liquid Temperature: 22.0°C

Medium parameters used:  $f = 3700$  MHz;  $\sigma = 3.063$  S/m;  $\epsilon_r = 35.901$ ;  $\rho = 1000$  kg/m<sup>3</sup>

DASY5 Configuration:

- Area Scan Setting: Find Secondary Maximum Within: 2.0 dB and with a peak SAR value greater than 0.0012W/kg
- Electronics: DAE4 Sn1486; Calibrated: 2021/6/1
- Probe: EX3DV4 - SN7369; ConvF(6.8, 6.8, 6.8) @ 3700 MHz; Calibrated: 2021/6/3
- Sensor-Surface: 1.4mm (Mechanical Surface Detection)
- Phantom: ELI V5.0 (20deg probe tilt); Type: QD OVA 002 AA; Serial: 1240

**Configuration/Pin=100mW/Area Scan (10x10x1):** Measurement grid: dx=10mm, dy=10mm

Maximum value of SAR (measured) = 10.5 W/kg

**Configuration/Pin=100mW/Zoom Scan (7x7x12)/Cube 0:** Measurement grid:

dx=4mm, dy=4mm, dz=2mm

Reference Value = 62.54 V/m; Power Drift = -0.02 dB

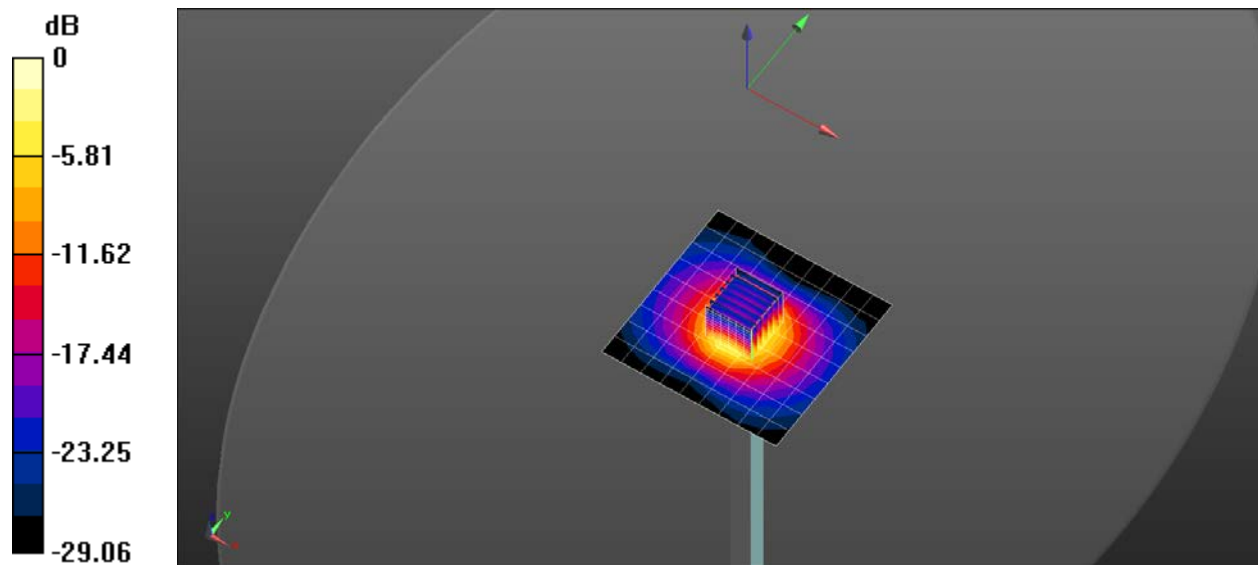
Peak SAR (extrapolated) = 19.7 W/kg

**SAR(1 g) = 6.21 W/kg; SAR(10 g) = 2.2 W/kg**

Smallest distance from peaks to all points 3 dB below = 8.4 mm

Ratio of SAR at M2 to SAR at M1 = 59.9%

Maximum value of SAR (measured) = 13.5 W/kg



0 dB = 13.5 W/kg = 11.30 dBW/kg