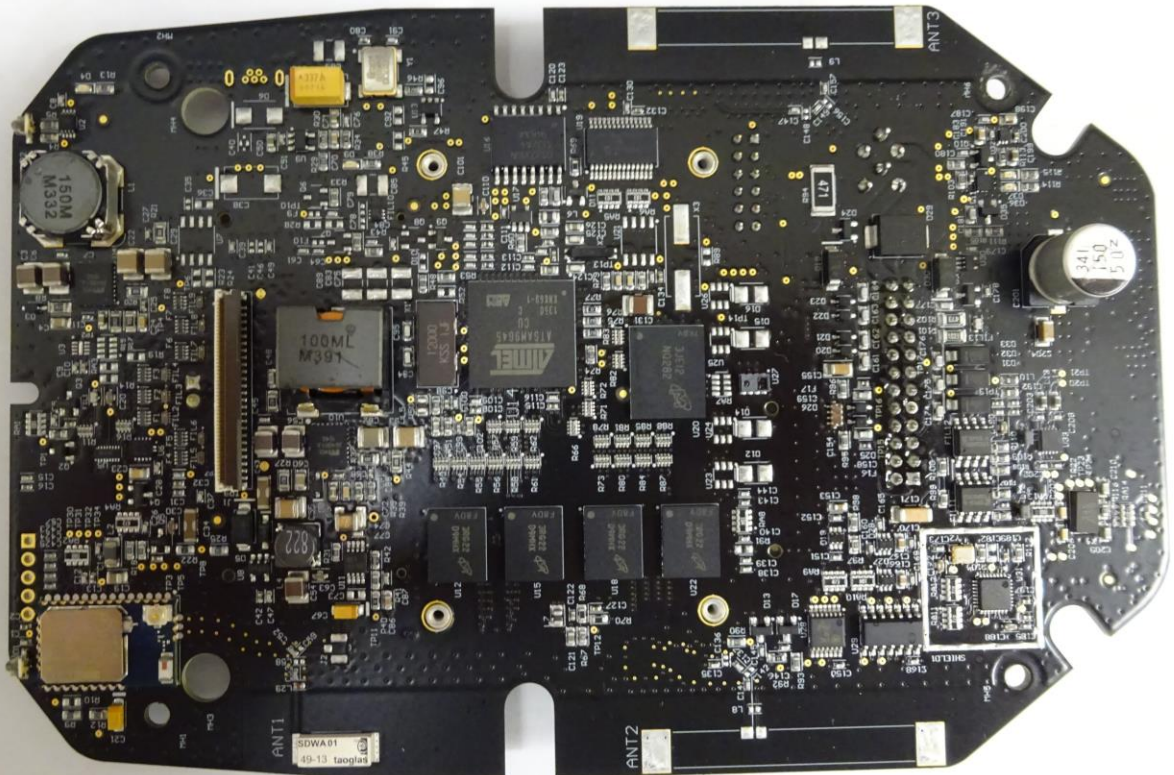
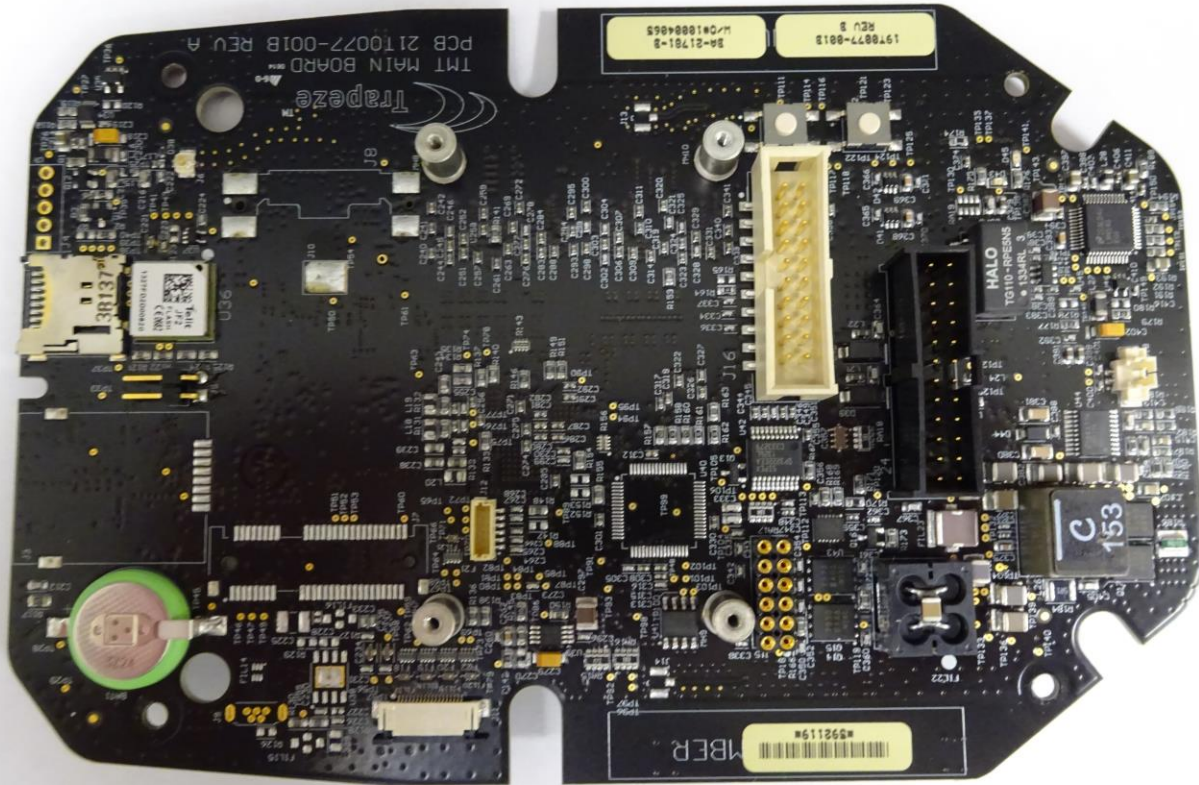


Internal Product Photos

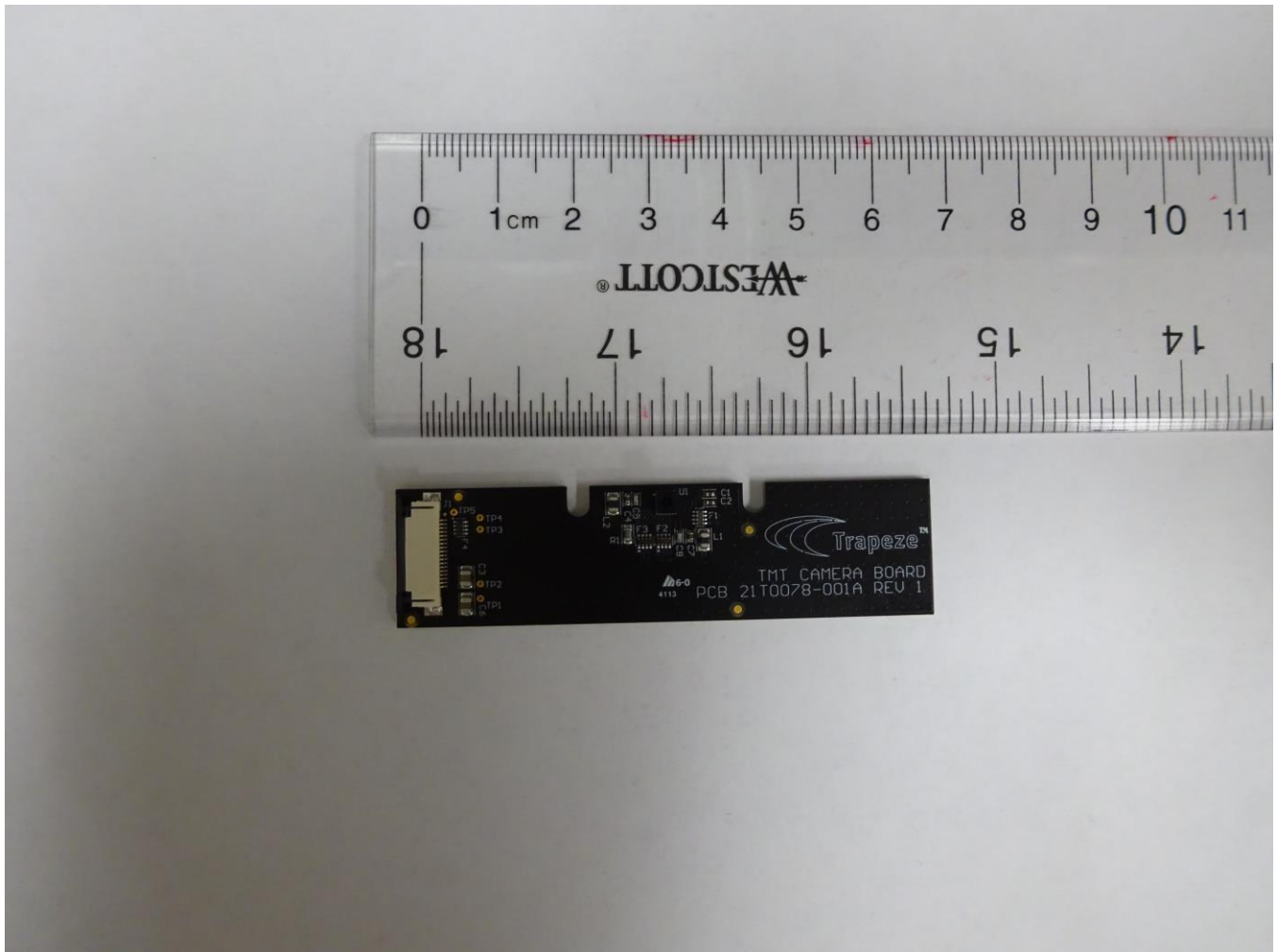
Main Controller PCB (Front View)



Main Controller PCB (Rear View)



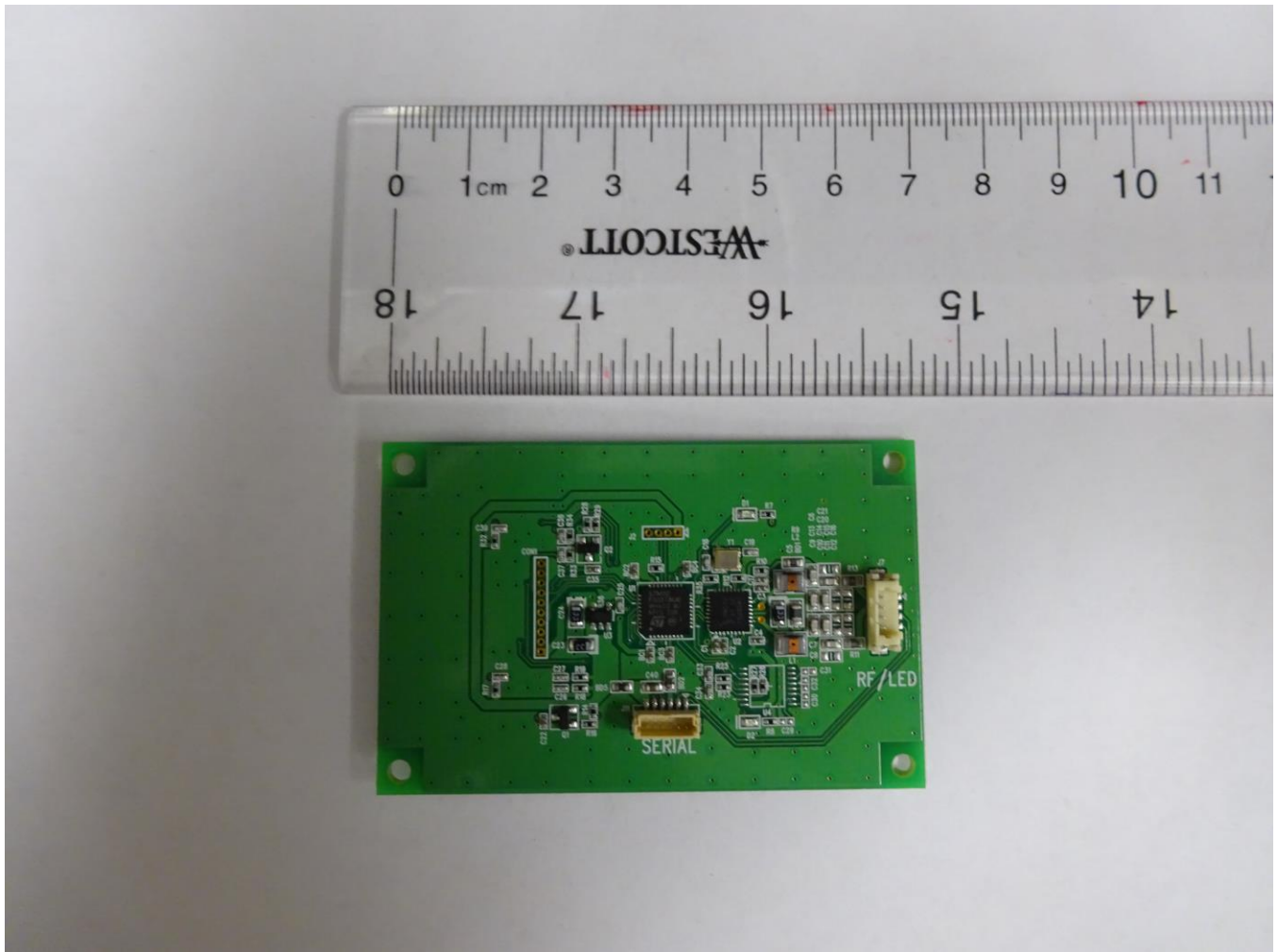
Camera PCB (Front View)



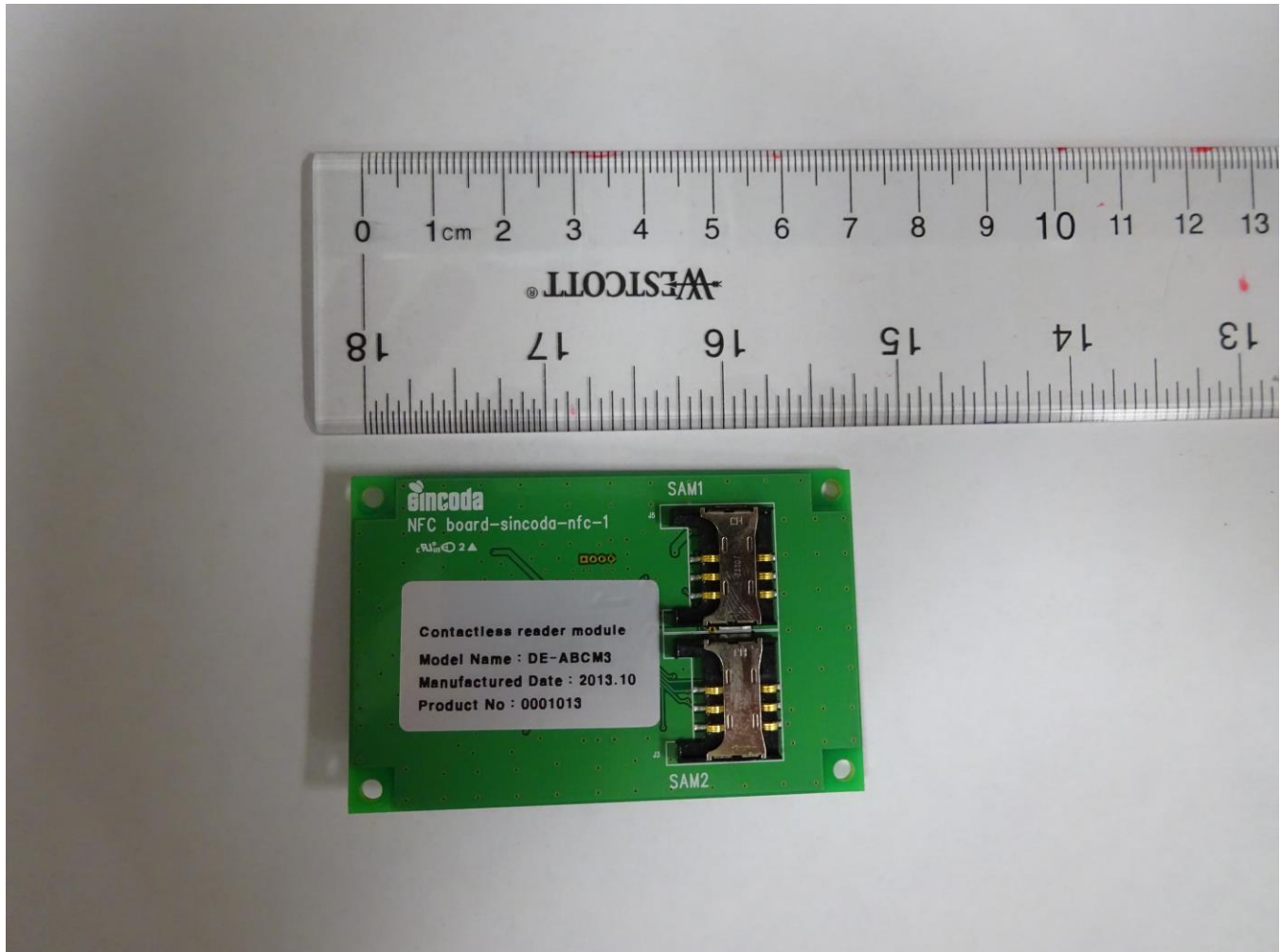
Camera PCB (Rear View)



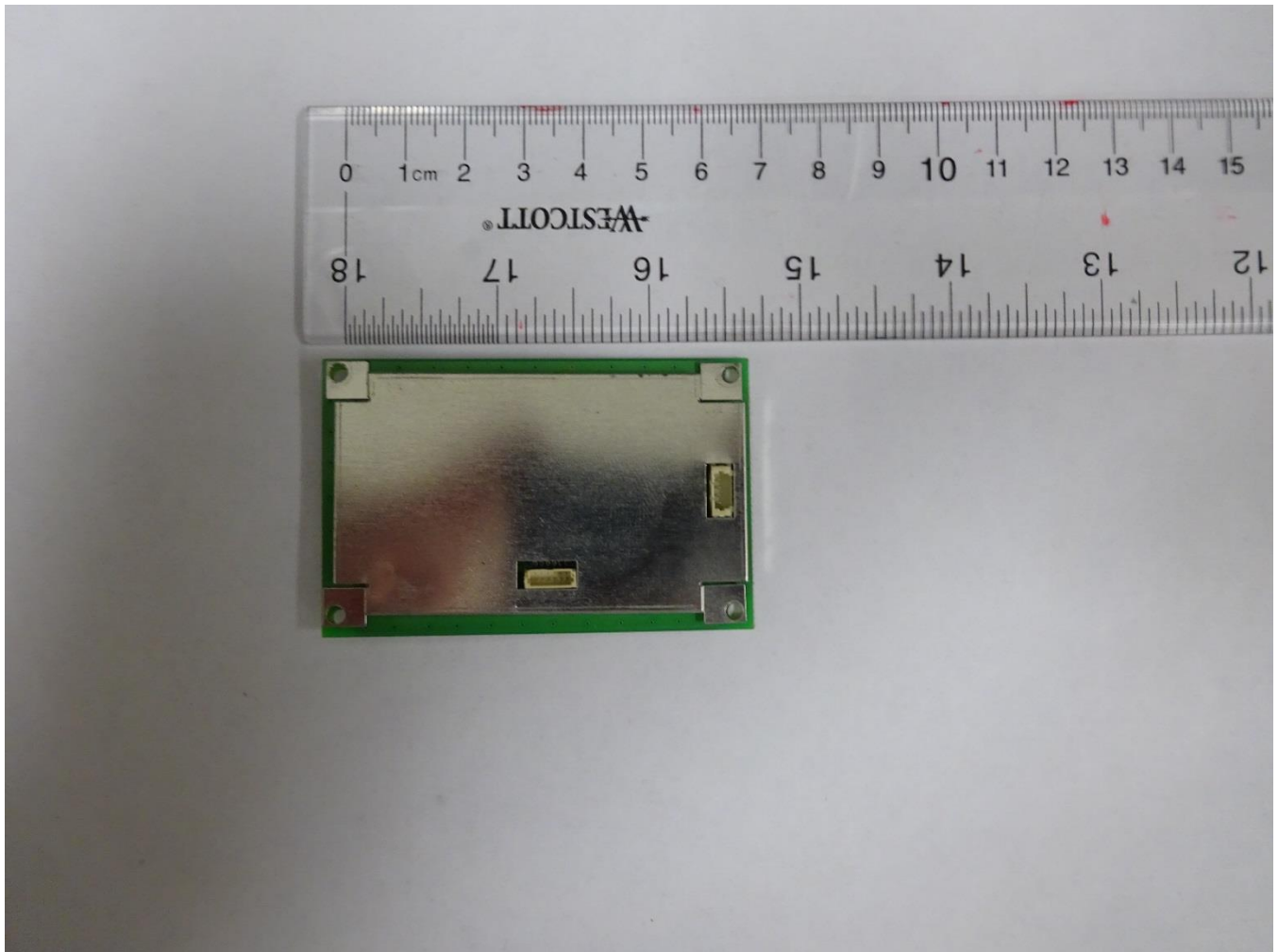
Near Field Communications PCB (Front View)



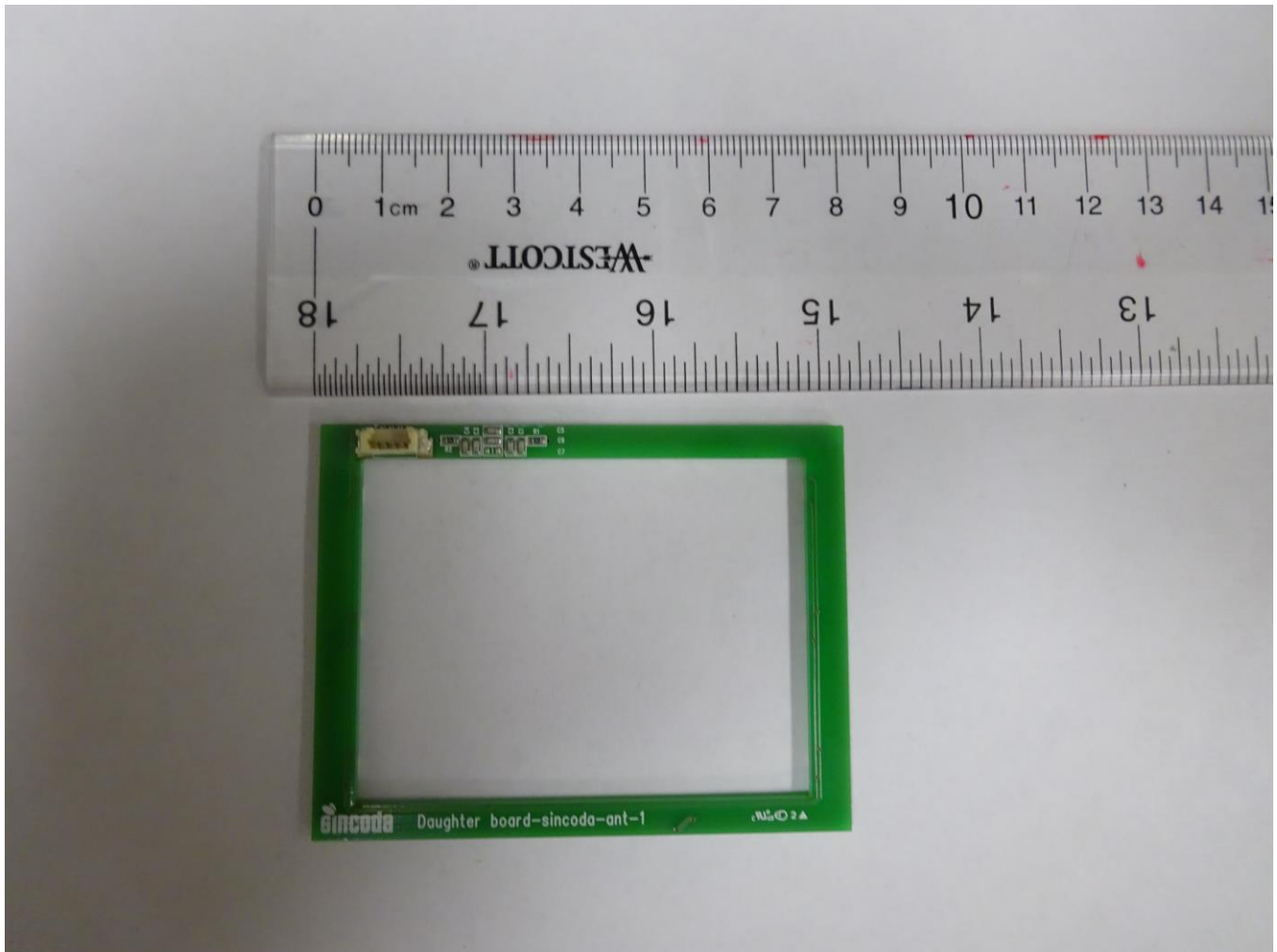
Near Field Communications PCB (Rear View)



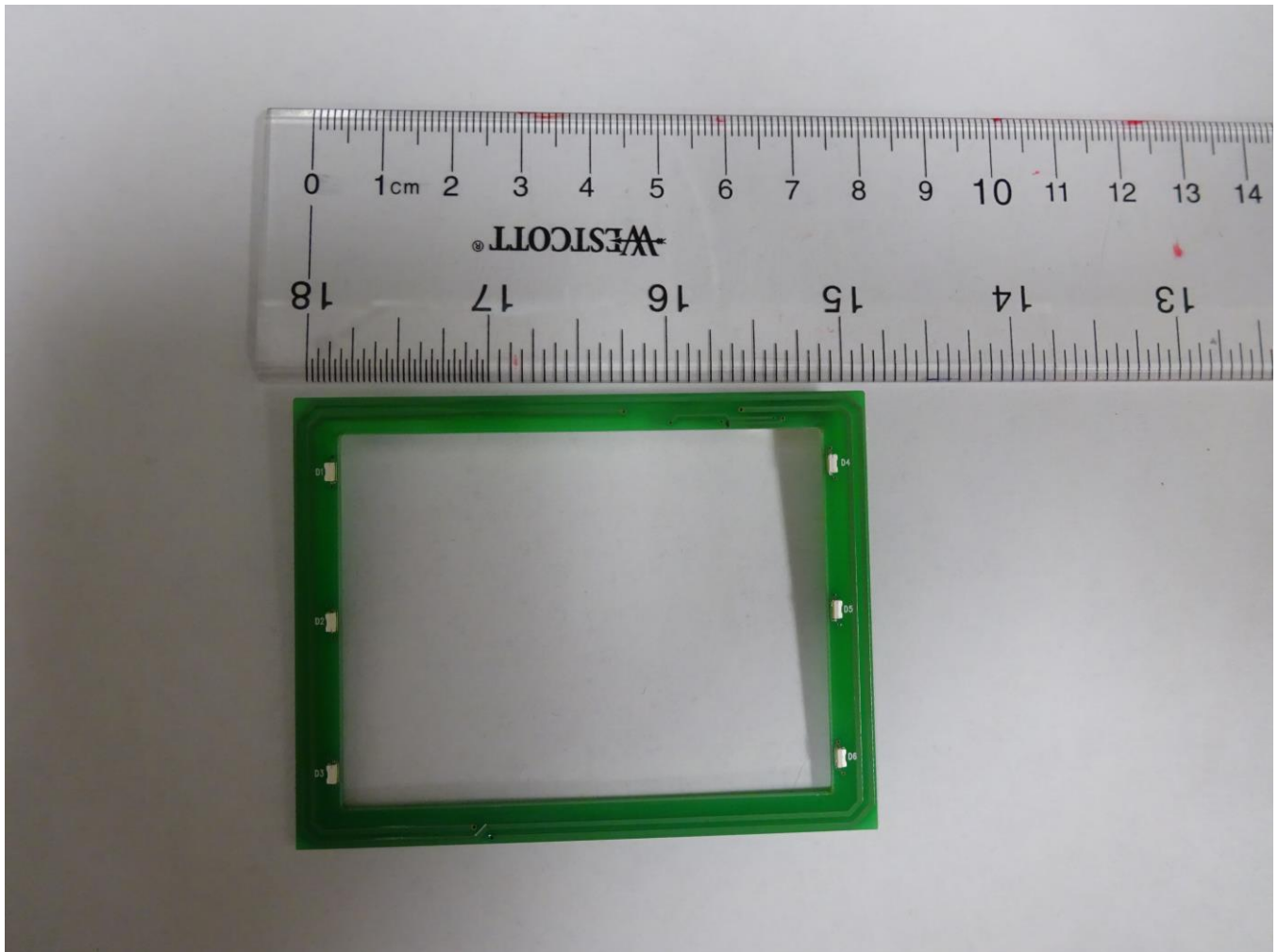
Near Field Communications PCB with Shield Installed (Front View)



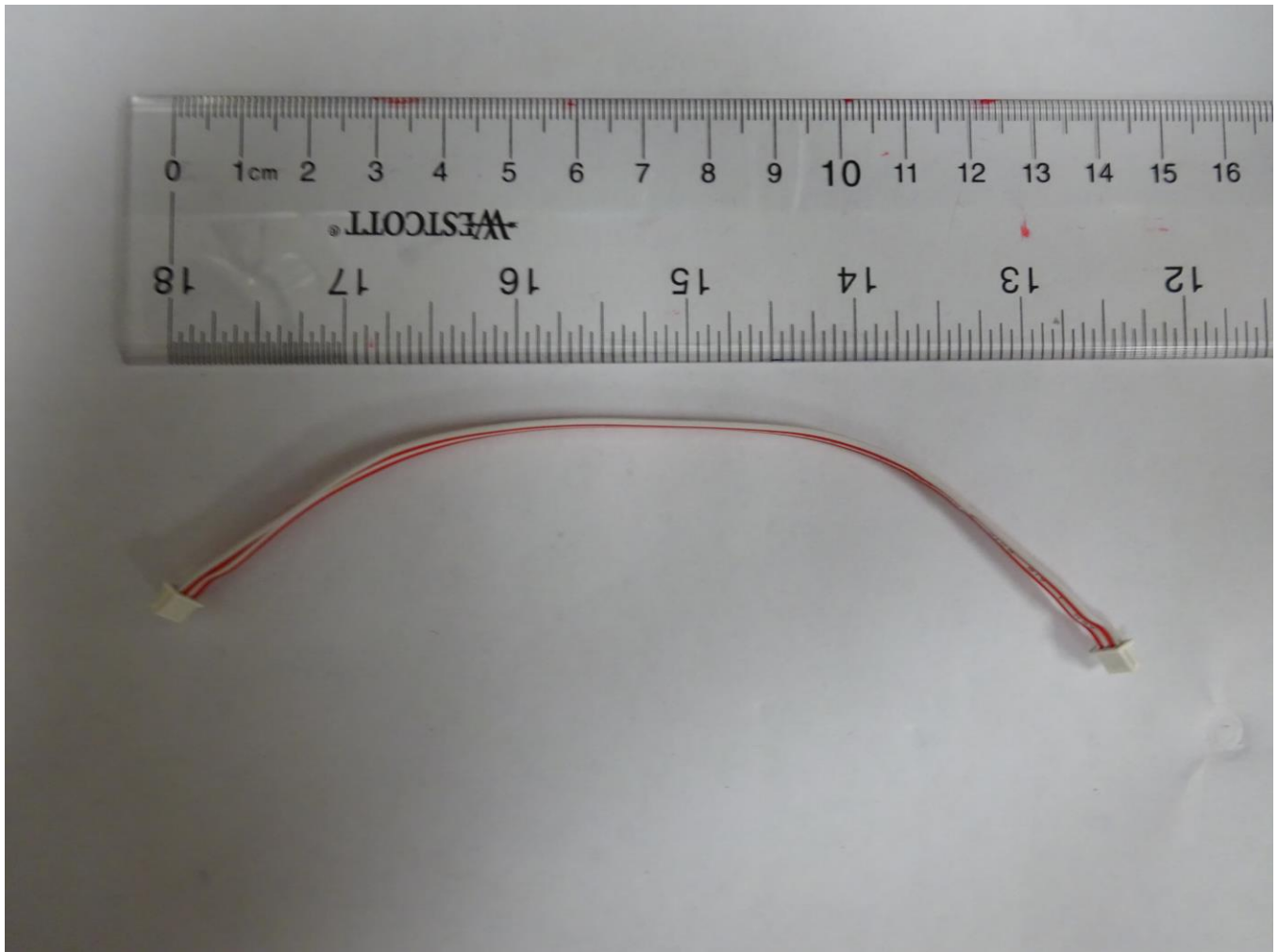
Near Field Communications Antenna PCB (Front View)



Near Field Communications Antenna PCB (Rear View)



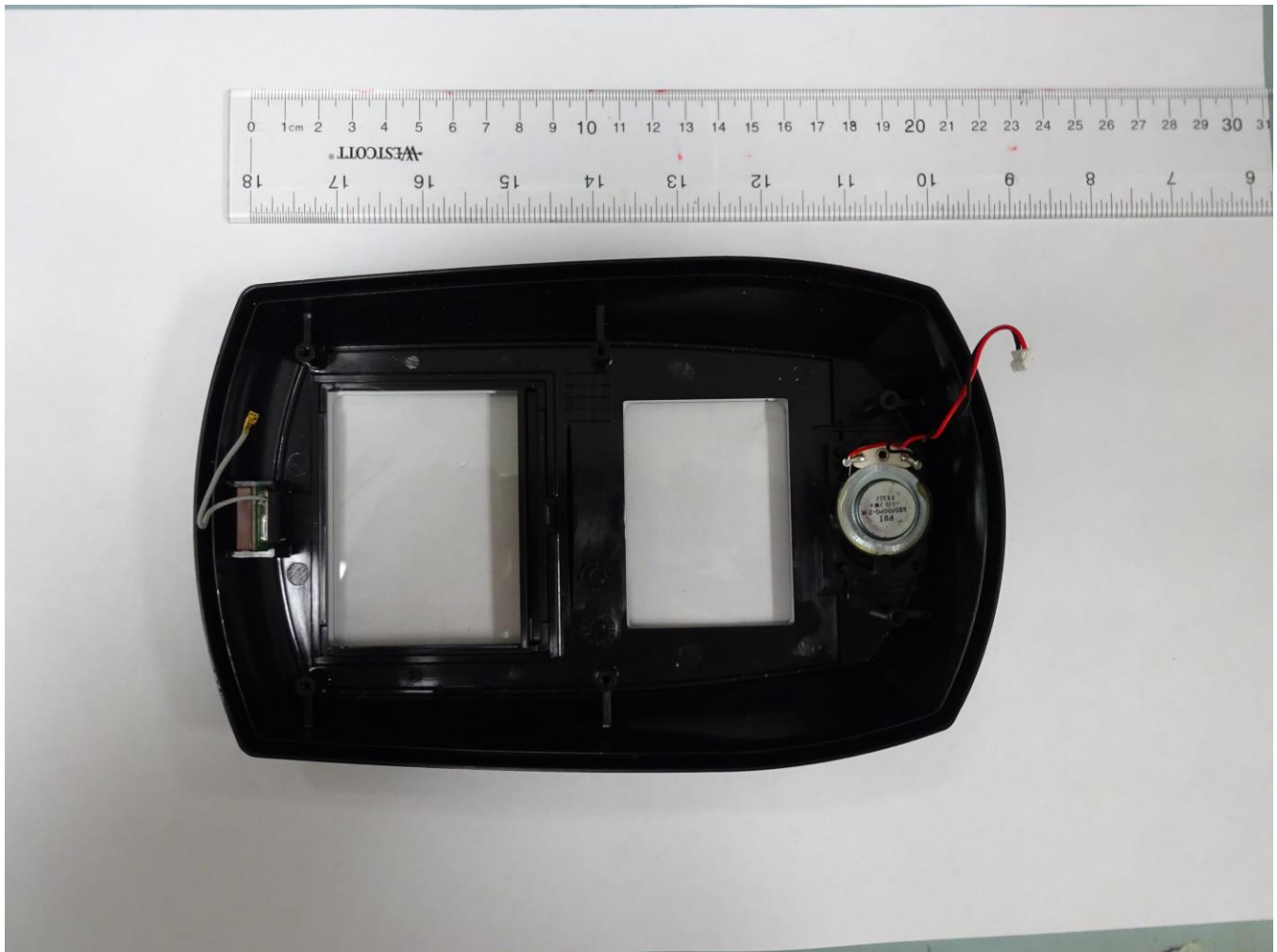
Near Field Communications Antenna Cable



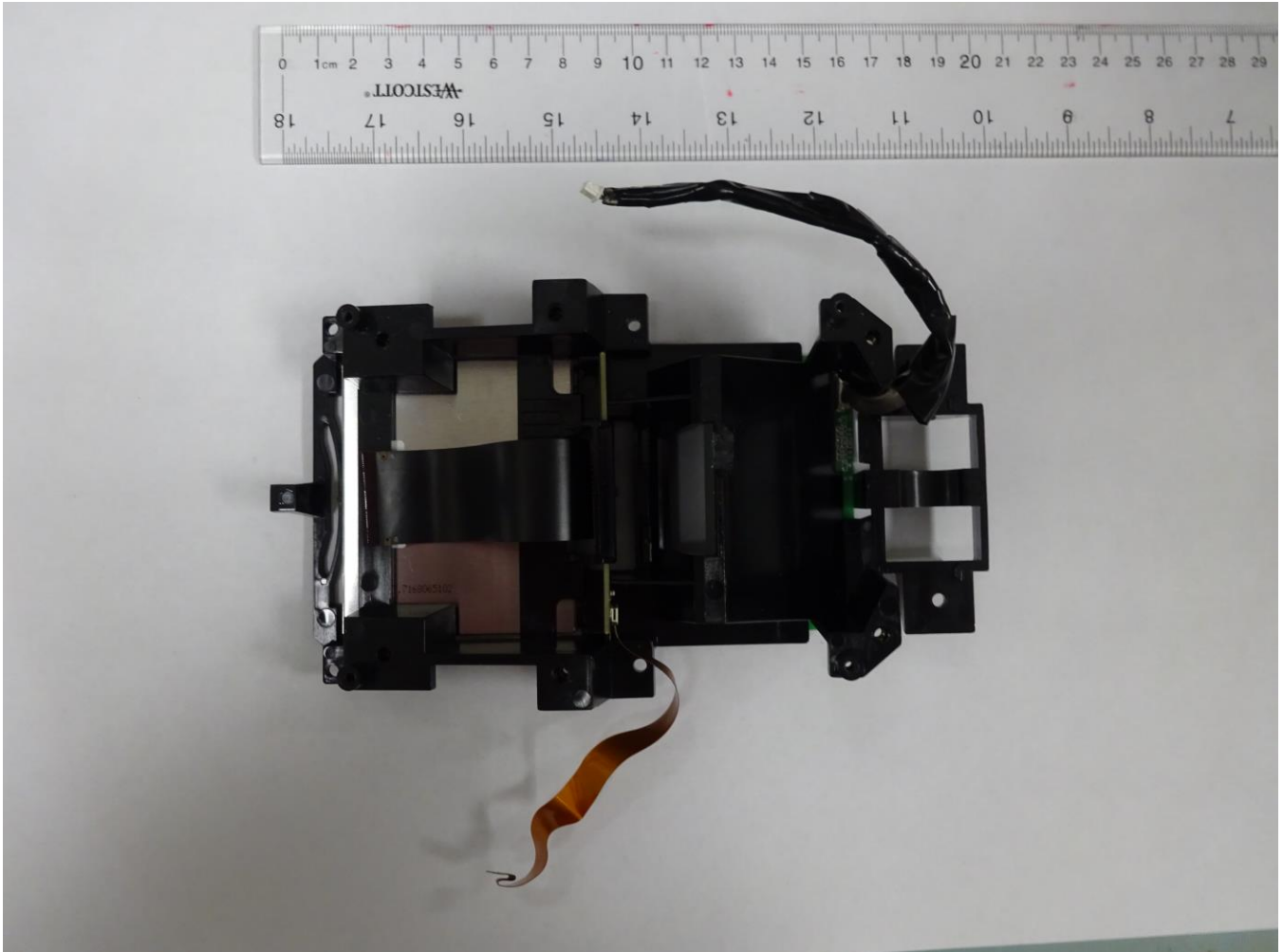
Near Field Communications Antenna Cable With Shield Installed



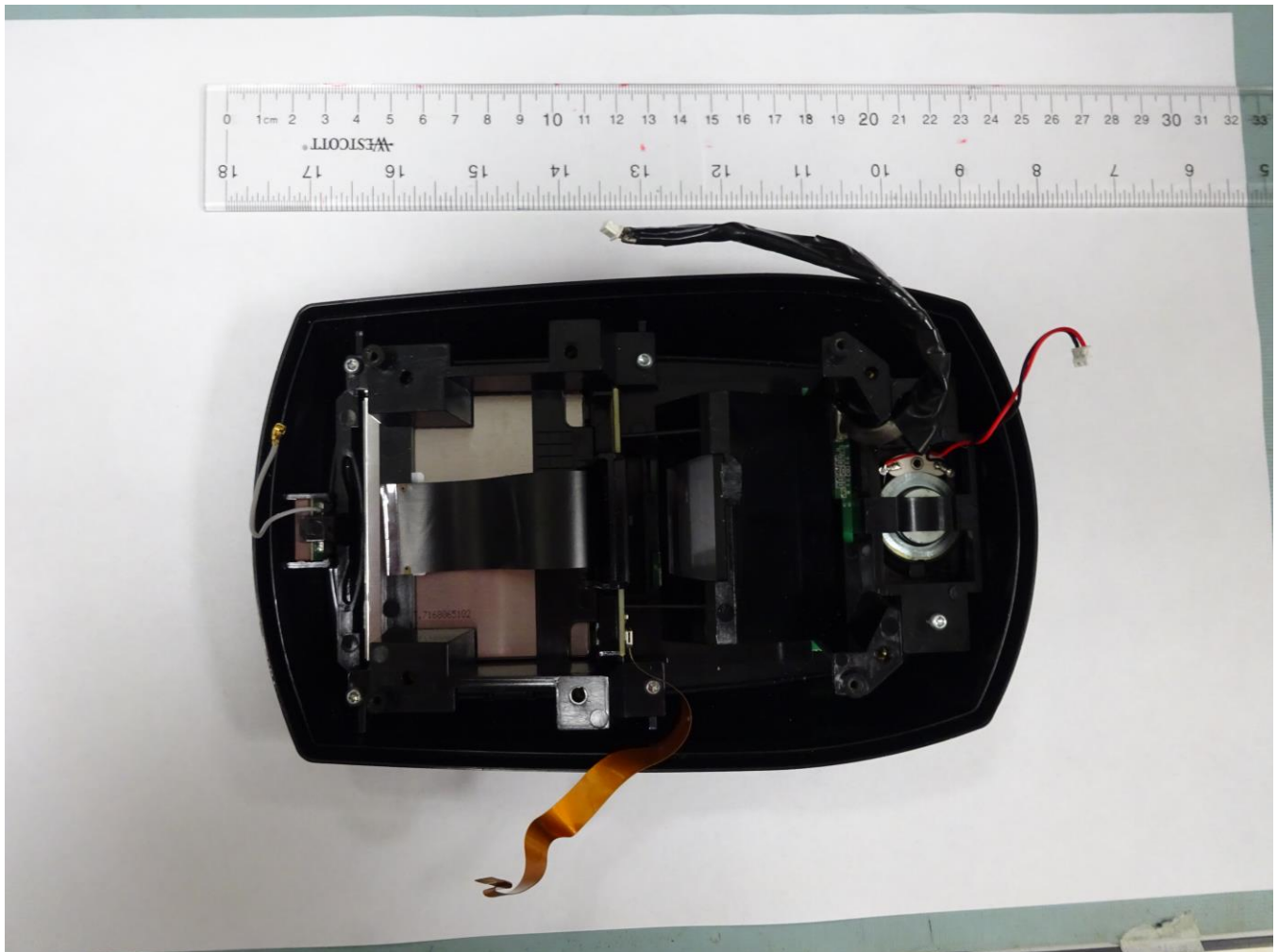
Internal View of Front Enclosure Piece



Carrier Piece with Camera Board, Antenna Board and LCD Installed



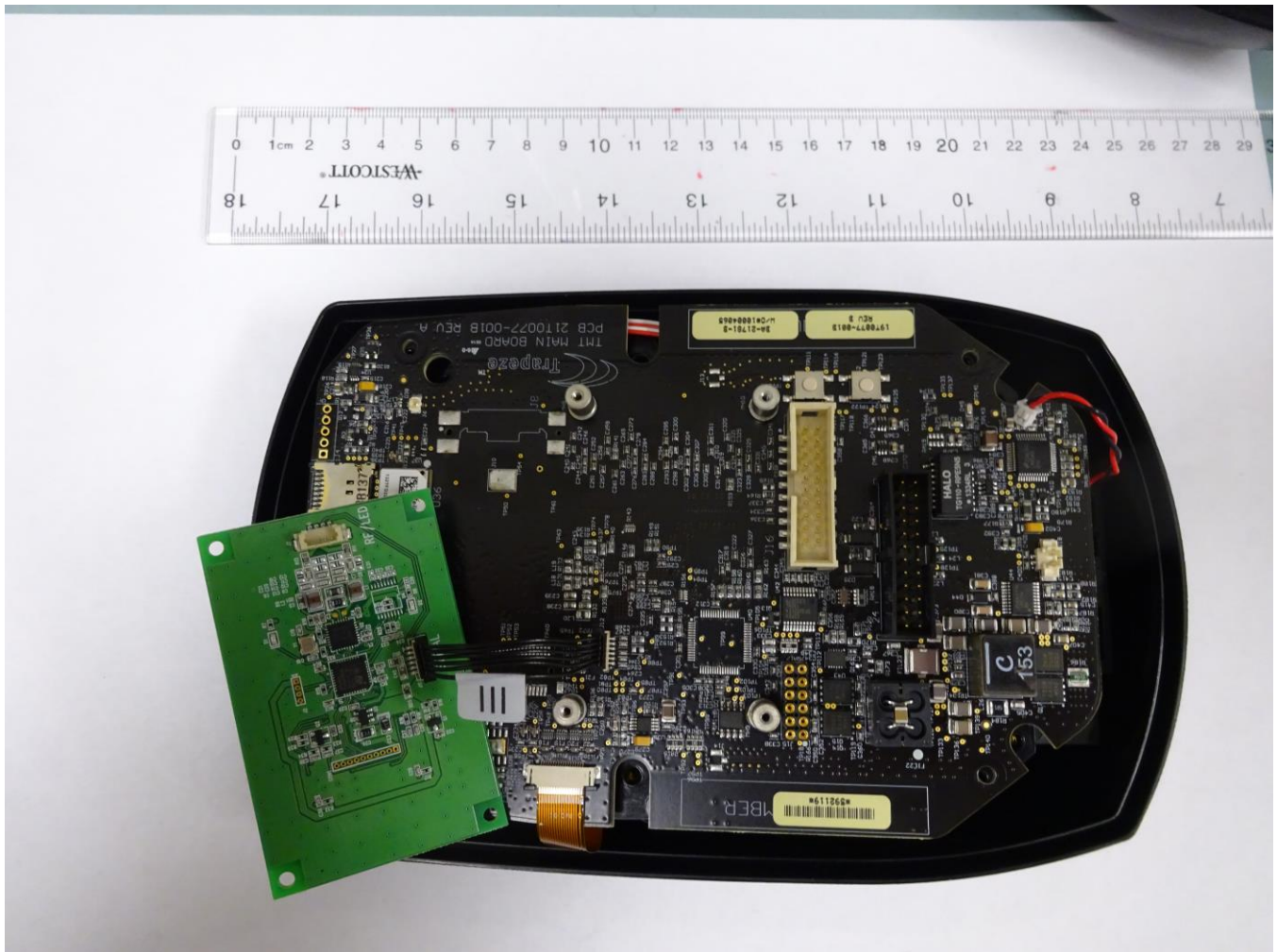
Carrier Piece Installed In Front Enclosure Piece



Main Controller PCB Installed (Affixed To Carrier Piece)



Near Field Communications PCB Attached Via Cabling Without Shield



Near Field Communications PCB Attached With Shield And Shielded Cable



Near Field Communications PCB Installed

