

EXHIBIT 9**Internal Photographs**

(Pursuant to FCC Part 2.1033(b)(7), 2.1033(c)(12) and RSP 100 Annex C)

The following photographs are attached.

Exhibit

- | | |
|--|----|
| 1. RF board <u>with</u> Chassis and Housing (Front Side), Model MTP8550EX | 9A |
| 2. RF board <u>with</u> Chassis and Housing (Front Side), Model MTP8500EX | 9B |
| 3. RF board <u>with</u> Chassis and Housing (Back Side), Model MTP8550EX/MTP8500EX | 9C |
| 4. RF board <u>with</u> Shields (Top), Model MTP8550EX /MTP8500EX | 9D |
| 5. RF board <u>without</u> Shields (Top), Model MTP8550EX/MTP8500EX | 9E |
| 6. RF board <u>with</u> Shields (Bottom), Model MTP8550EX/MTP8500EX | 9F |
| 7. RF board <u>without</u> Shields (Bottom), Model MTP8550EX/MTP8500EX | 9G |
| 8. Keypad Flex (Front and Back Side), Model MTP8550EX | 9H |
| 9. Keypad Flex (Front and Back Side), Model MTP8500EX | 9I |

Exhibit 9A

RF Board with Chassis and Housing (Front Side), Model MTP8550Ex



Exhibit 9B

RF board with Chassis and Housing (Front Side), Model MTP8500Ex



Exhibit 9C

RF Board with Chassis and Housing (Back Side), Model MTP8550Ex / MTP8500Ex



Exhibit 9D

RF board with Shields (Top), Model MTP8550Ex / MTP8500Ex

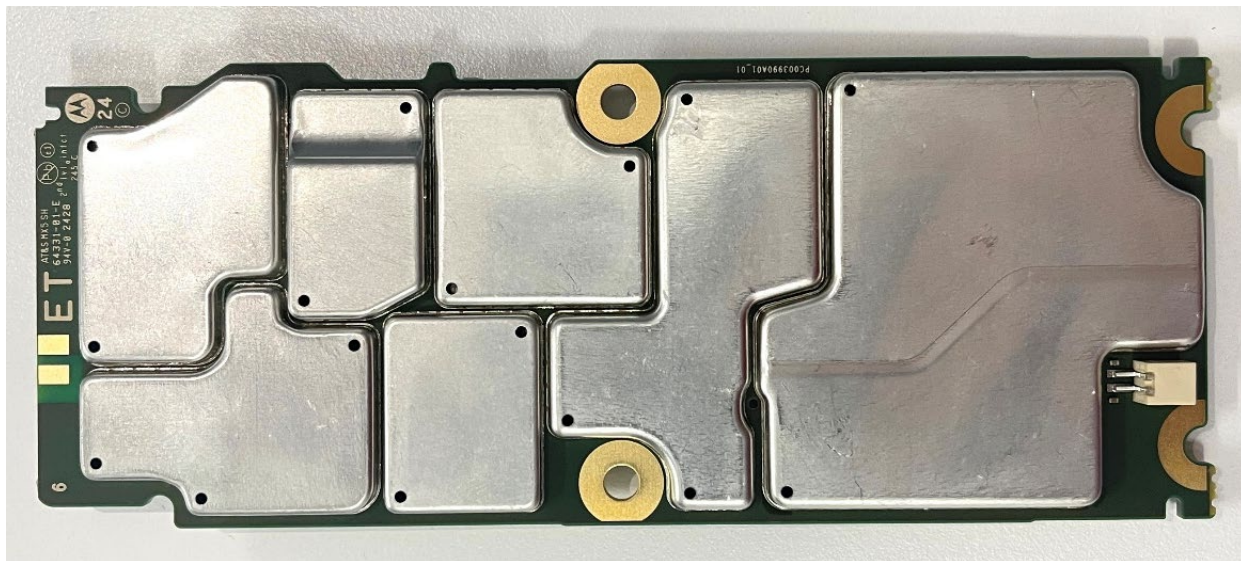


Exhibit 9E

RF board without Shields (Top), Model MTP8550Ex / MTP8500Ex

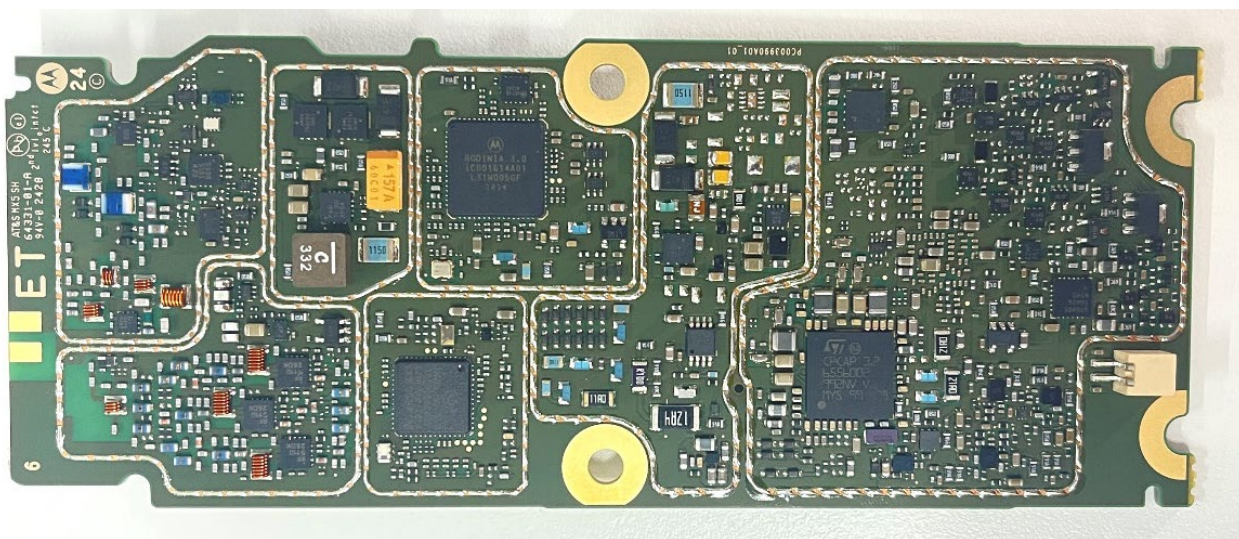


Exhibit 9F

RF board with Shields (Bottom), Model MTP8550Ex / MTP8500Ex

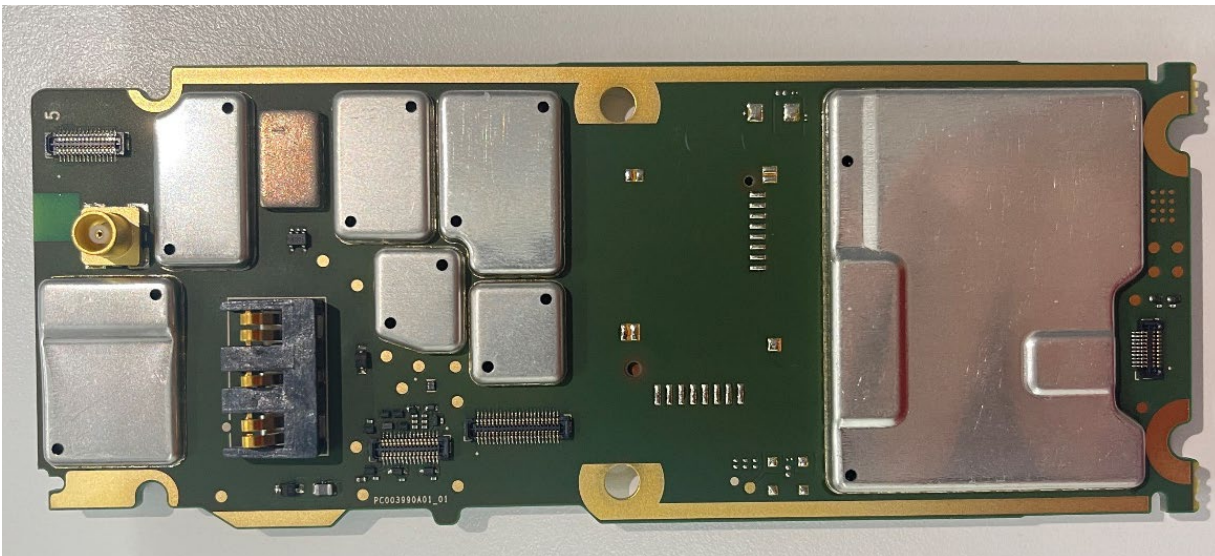


Exhibit 9G

RF board without Shields (Bottom), Model MTP8550Ex / MTP8500Ex

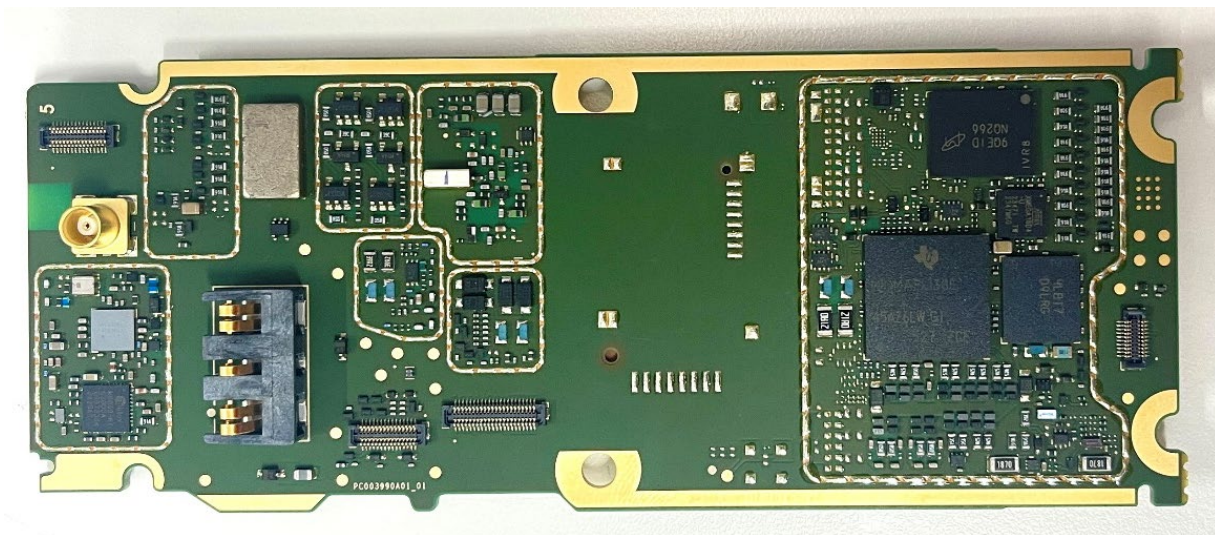


Exhibit 9H

Keypad Flex (Front and Back Side), Model MTP8550Ex



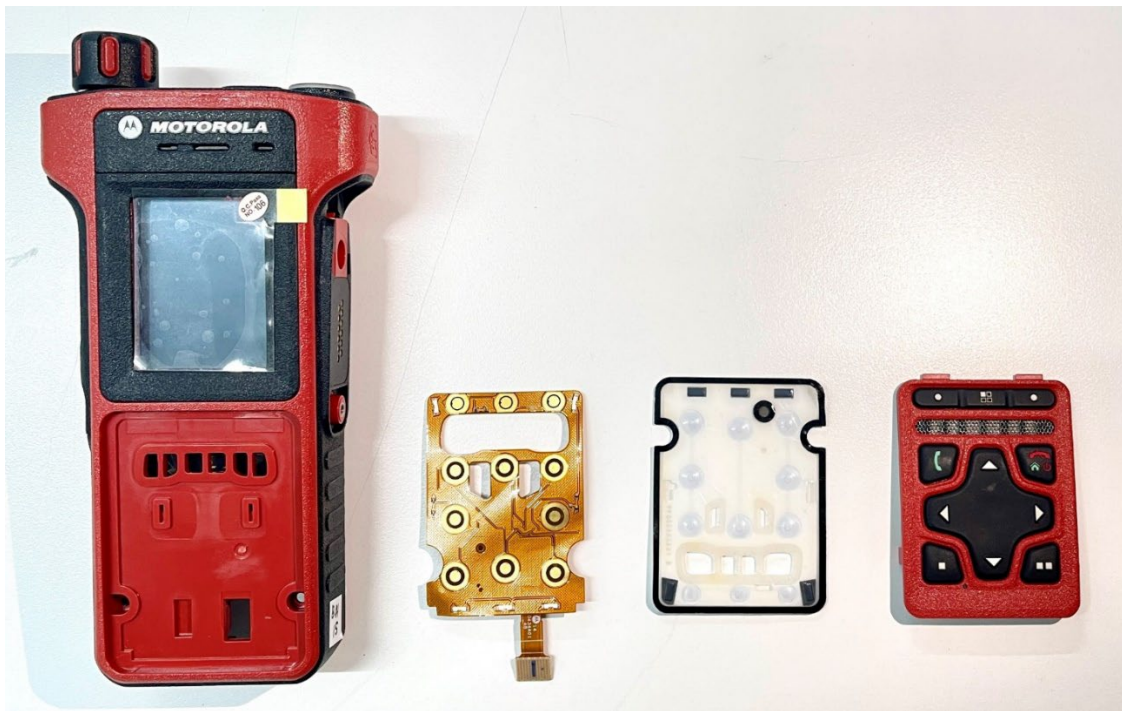
Front Side



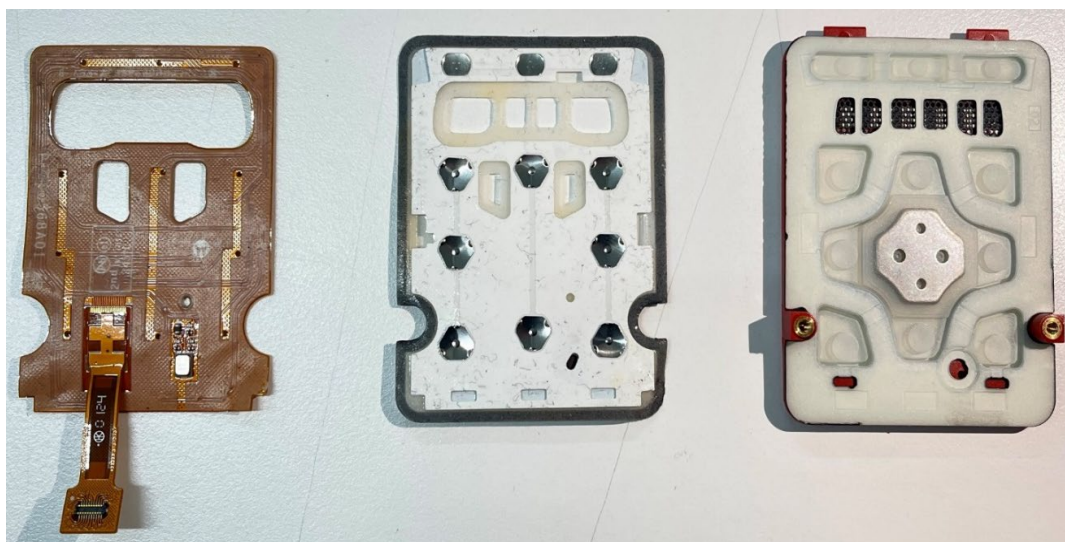
Back Side

Exhibit 9I

Keypad Flex (Front and Back Side), Model MTP8500Ex



Front Side



Back Side

*** END ***