

PCS 1900 RF Interference Potential Test Report

Hardware Setup

Probe | Calibration Date

EF3DV3 - SN4041 | March 11, 2024

DAE | Calibration Date

DAE4 Sn1798 | May 22, 2024

Software Version

1.2.6.2199

Communication Systems

MIF

3.8

Channel | Frequency [MHz]

512 | 1850.2

Communication Systems' Name

GPRS-FDD (TDMA, GMSK, TN 0)

Grid Settings

Extent X [mm]

50.0

Step X [mm]

10.0

Extent Y [mm]

50.0

Step Y [mm]

10.0

Distance [mm]

15.0

Results

Emax [dBV/m]

23.59

Eavg 50x50 Max [dBV/m]

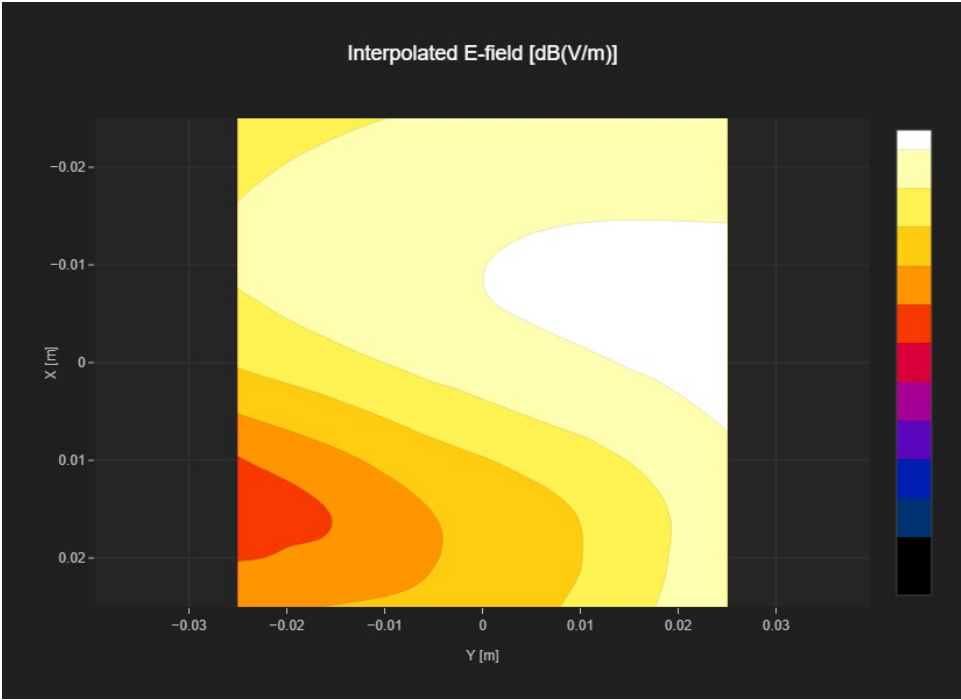
21.06

Drift [dB]

-0.02

RFail [dBV/m]

24.86



PCS 1900 RF Interference Potential Test Report

Hardware Setup

Probe | Calibration DateEF3DV3 - SN4041 | March 11, 2024

DAE | Calibration DateDAE4 Sn1798 | May 22, 2024

Software Version1.2.6.2199

Communication Systems

MIF3.8

Channel | Frequency [MHz]661 | 1880.0

Communication Systems' NameGPRS-FDD (TDMA, GMSK, TN 0)

Grid Settings

Extent X [mm]50.0Step X [mm]10.0

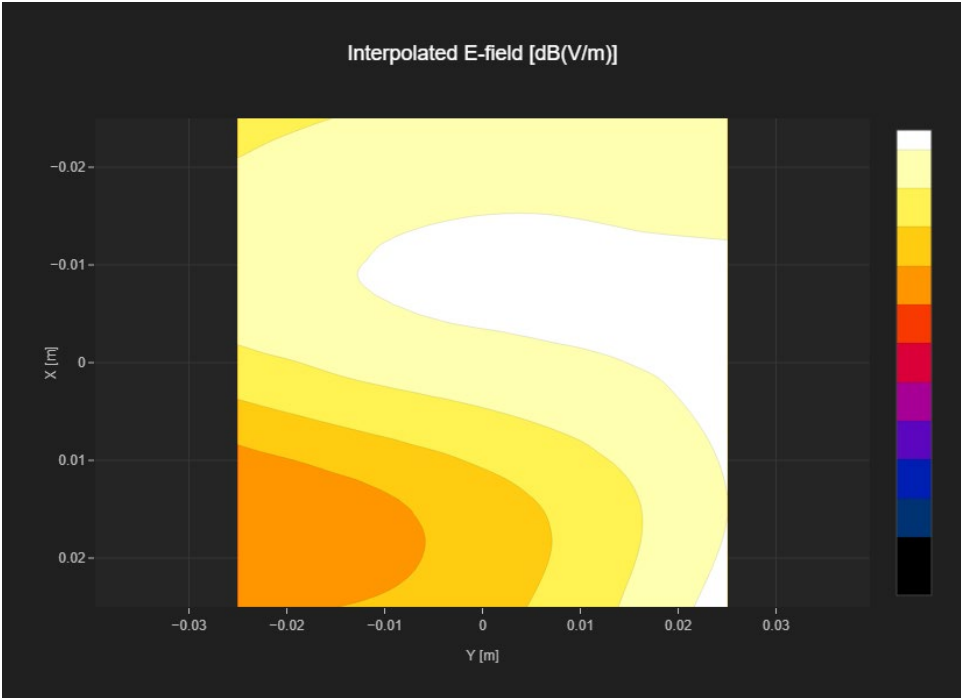
Extent Y [mm]50.0Step Y [mm]10.0

Distance [mm]15.0

Results

Emax [dBV/m]22.91Eavg 50x50 Max [dBV/m]21.03

Drift [dB]0.18RFail [dBV/m]24.83



PCS 1900 RF Interference Potential Test Report

Hardware Setup

Probe | Calibration DateEF3DV3 - SN4041 | March 11, 2024

DAE | Calibration DateDAE4 Sn1798 | May 22, 2024

Software Version1.2.6.2199

Communication Systems

MIF3.8

Channel | Frequency [MHz]810 | 1909.8

Communication Systems' NameGPRS-FDD (TDMA, GMSK, TN 0)

Grid Settings

Extent X [mm]50.0Step X [mm]10.0

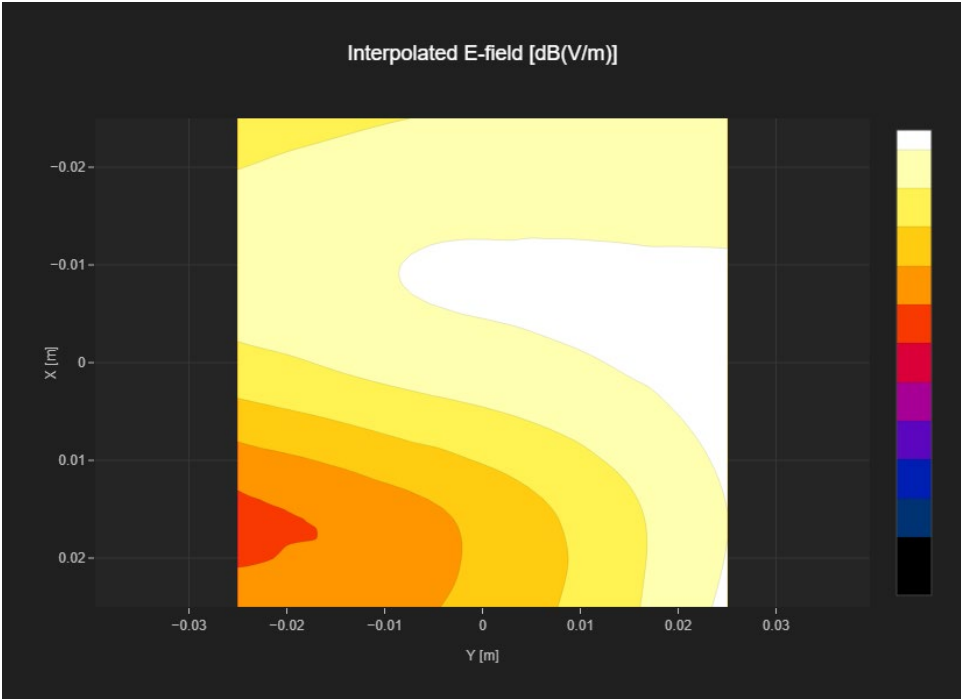
Extent Y [mm]50.0Step Y [mm]10.0

Distance [mm]15.0

Results

Emax [dBV/m]23.45Eavg 50x50 Max [dBV/m]21.1

Drift [dB]0.03RFail [dBV/m]24.9



PCS 1900 RF Interference Potential Test Report

Hardware Setup

Probe | Calibration DateEF3DV3 - SN4041 | March 11, 2024

DAE | Calibration DateDAE4 Sn1798 | May 22, 2024

Software Version1.2.6.2199

Communication Systems

MIF1.15

Channel | Frequency [MHz]512 | 1850.2

Communication Systems' NameGPRS-FDD (TDMA, GMSK, TN 0-1)

Grid Settings

Extent X [mm]50.0Step X [mm]10.0

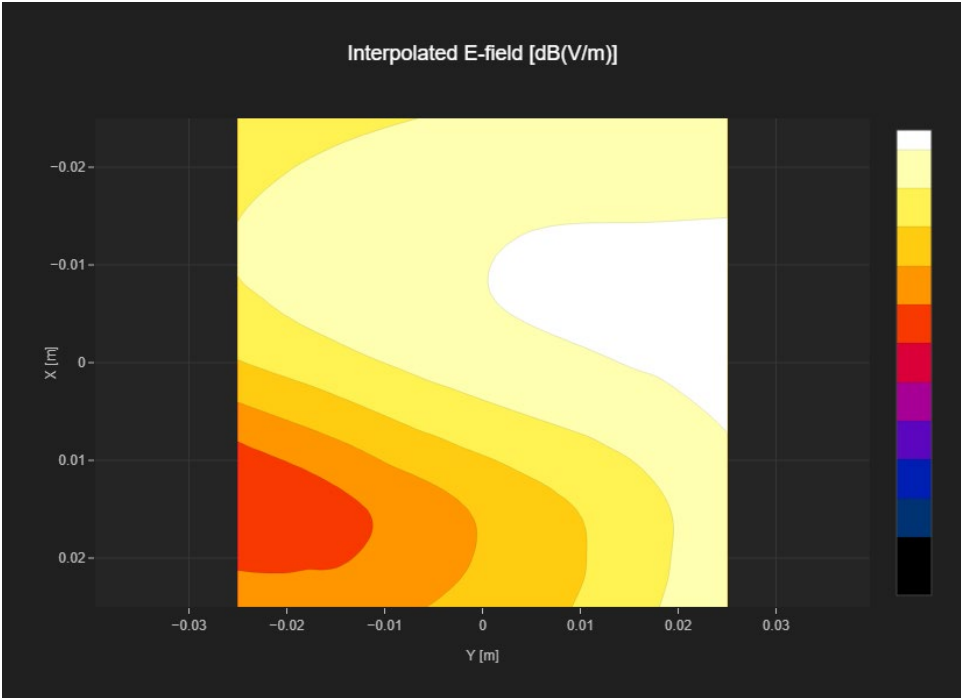
Extent Y [mm]50.0Step Y [mm]10.0

Distance [mm]15.0

Results

Emax [dBV/m]25.85Eavg 50x50 Max [dBV/m]23.23

Drift [dB]0.03RFail [dBV/m]24.38



PCS 1900 RF Interference Potential Test Report

Hardware Setup

Probe | Calibration Date

EF3DV3 - SN4041 | March 11, 2024

DAE | Calibration Date

DAE4 Sn1798 | May 22, 2024

Software Version

1.2.6.2199

Communication Systems

MIF

1.15

Channel | Frequency [MHz]

661 | 1880.0

Communication Systems' Name

GPRS-FDD (TDMA, GMSK, TN 0-1)

Grid Settings

Extent X [mm]

50.0

Step X [mm]

10.0

Extent Y [mm]

50.0

Step Y [mm]

10.0

Distance [mm]

15.0

Results

Emax [dBV/m]

25.24

Eavg 50x50 Max [dBV/m]

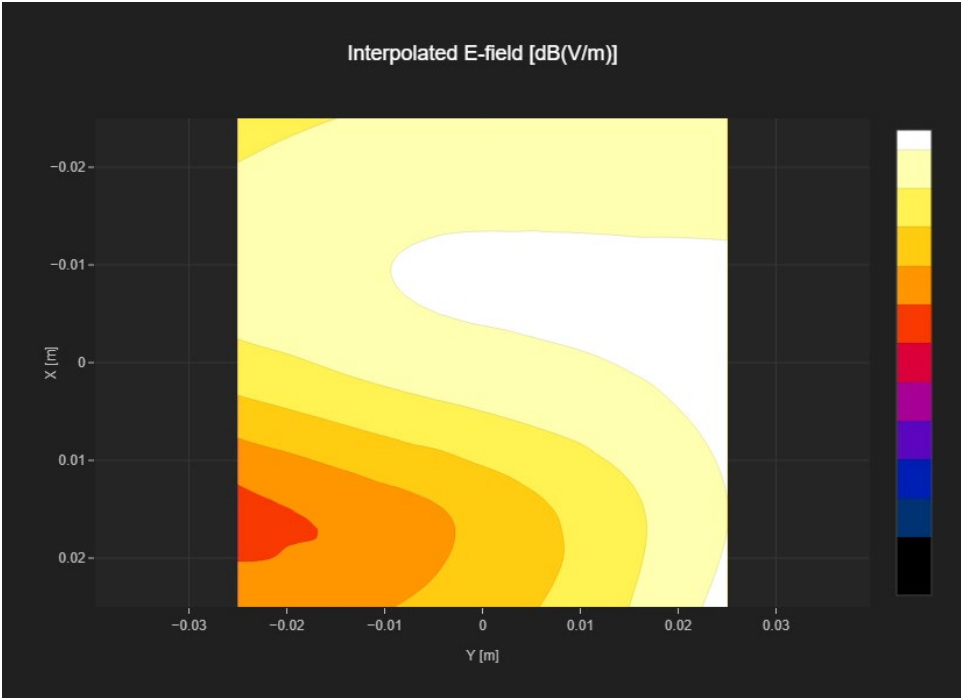
22.96

Drift [dB]

0.03

RFail [dBV/m]

24.11



PCS 1900 RF Interference Potential Test Report

Hardware Setup

Probe | Calibration DateEF3DV3 - SN4041 | March 11, 2024

DAE | Calibration DateDAE4 Sn1798 | May 22, 2024

Software Version1.2.6.2199

Communication Systems

MIF1.15

Channel | Frequency [MHz]810 | 1909.8

Communication Systems' NameGPRS-FDD (TDMA, GMSK, TN 0-1)

Grid Settings

Extent X [mm]50.0Step X [mm]10.0

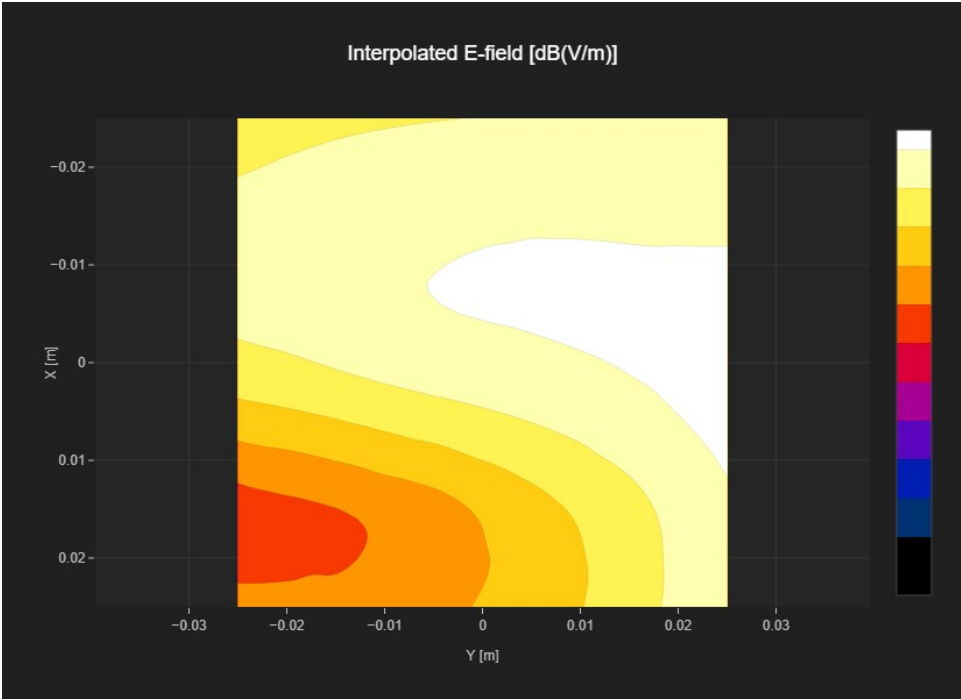
Extent Y [mm]50.0Step Y [mm]10.0

Distance [mm]15.0

Results

Emax [dBV/m]25.4Eavg 50x50 Max [dBV/m]22.95

Drift [dB]0.02RFail [dBV/m]24.1



PCS 1900 RF Interference Potential Test Report

Hardware Setup

Probe | Calibration DateEF3DV3 - SN4041 | March 11, 2024

DAE | Calibration DateDAE4 Sn1798 | May 22, 2024

Software Version1.2.6.2199

Communication Systems

MIF3.8

Channel | Frequency [MHz]512 | 1850.2

Communication Systems' NameGPRS-FDD (TDMA, GMSK, TN 0)

Grid Settings

Extent X [mm]50.0Step X [mm]10.0

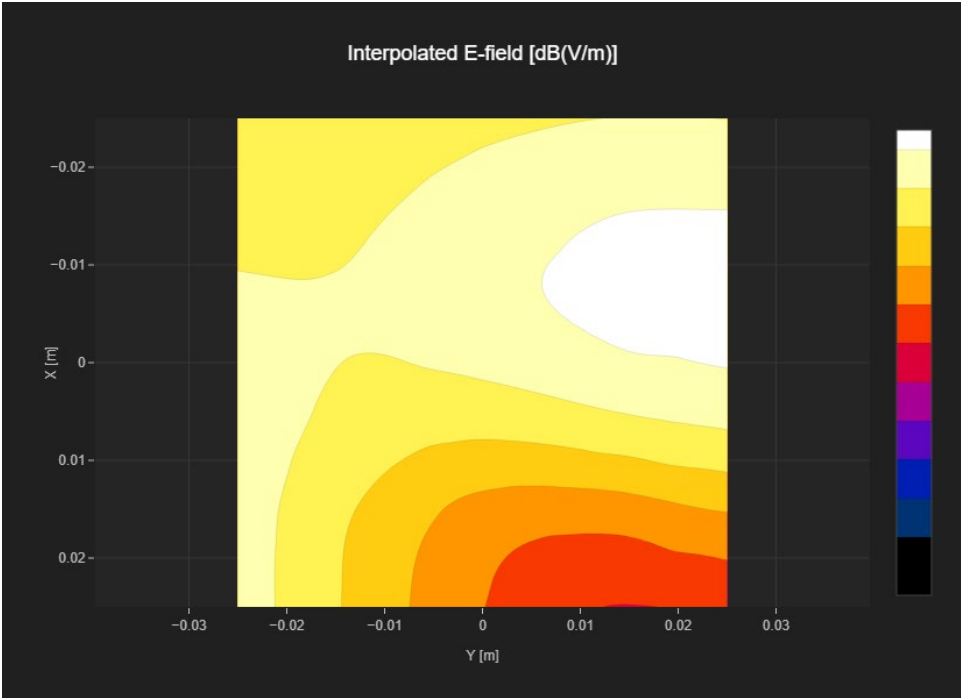
Extent Y [mm]50.0Step Y [mm]10.0

Distance [mm]15.0

Results

Emax [dBV/m]27.81Eavg 50x50 Max [dBV/m]24.9

Drift [dB]0.04RFail [dBV/m]28.7



PCS 1900 RF Interference Potential Test Report

Hardware Setup

Probe | Calibration Date

EF3DV3 - SN4041 | March 11, 2024

DAE | Calibration Date

DAE4 Sn1798 | May 22, 2024

Software Version

1.2.6.2199

Communication Systems

MIF

3.8

Channel | Frequency [MHz]

661 | 1880.0

Communication Systems' Name

GPRS-FDD (TDMA, GMSK, TN 0)

Grid Settings

Extent X [mm]

50.0

Step X [mm]

10.0

Extent Y [mm]

50.0

Step Y [mm]

10.0

Distance [mm]

15.0

Results

Emax [dBV/m]

27.5

Eavg 50x50 Max [dBV/m]

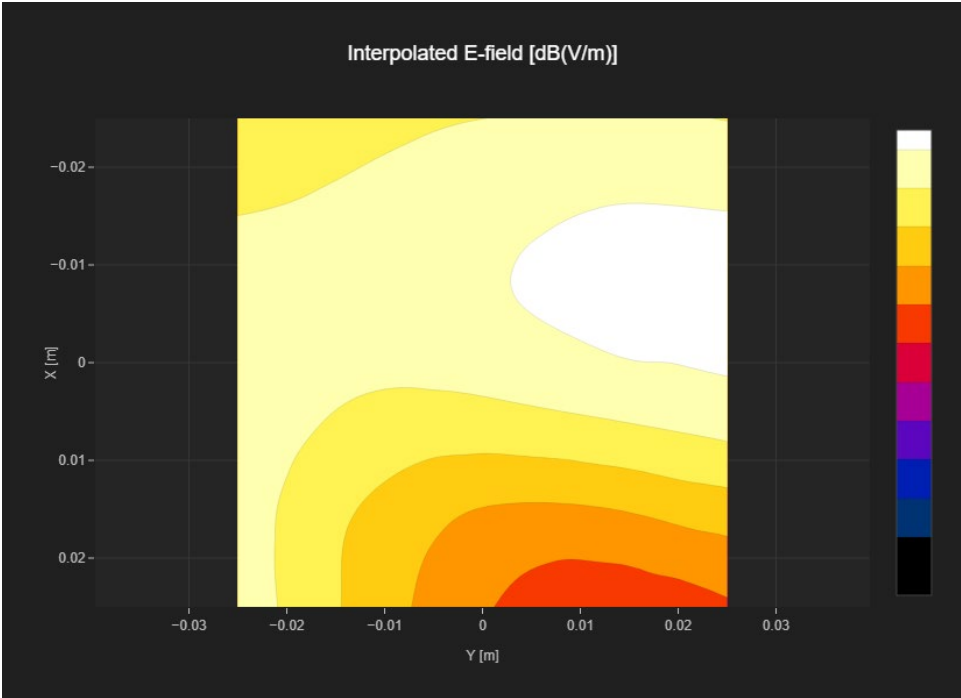
24.96

Drift [dB]

0.01

RFail [dBV/m]

28.76



PCS 1900 RF Interference Potential Test Report

Hardware Setup

Probe | Calibration DateEF3DV3 - SN4041 | March 11, 2024

DAE | Calibration DateDAE4 Sn1798 | May 22, 2024

Software Version1.2.6.2199

Communication Systems

MIF3.8

Channel | Frequency [MHz]810 | 1909.8

Communication Systems' NameGPRS-FDD (TDMA, GMSK, TN 0)

Grid Settings

Extent X [mm]50.0Step X [mm]10.0

Extent Y [mm]50.0Step Y [mm]10.0

Distance [mm]15.0

Results

Emax [dBV/m]27.18Eavg 50x50 Max [dBV/m]24.48

Drift [dB]0.05RFail [dBV/m]28.28

