

Model Difference Letter

We, the undersigned hereby declare, that the following equipment:

Product Name: Allegro Cellular

Model: PIT_Unit X

Is electrically equal to:

Models: PIT Unit X

Their Difference is:

These is a subset product of the product *Allegro Cellular*. For this product some components were added/replaced because they are required for the functionality of their specific application. (please relate to **Appendix A** for further details). The subset product is identical externally which includes mechanical housing dimensions and labelling (please relate to **Appendix B** for further details).

Point of contact:

Date:

26/09/2024

Signature:



Name: Negreanu Vily

Company Name: Arad Technologies Ltd.

Appendix A

The following equipment:

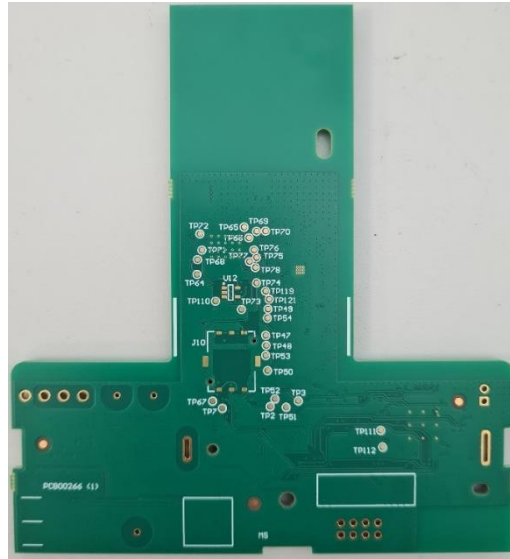
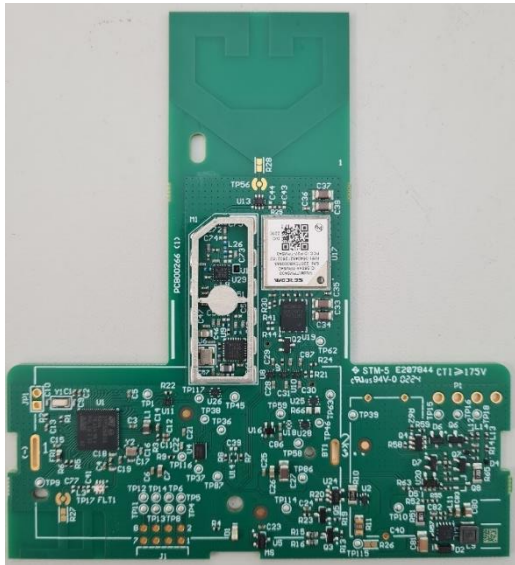
Brand/Item	Type/Model	Short Product description
Allegro Cellular	PIT_Unit X	Spread Spectrum Transceiver

Is a **Superset** to the following equipment (including Software/Hardware version(s)):

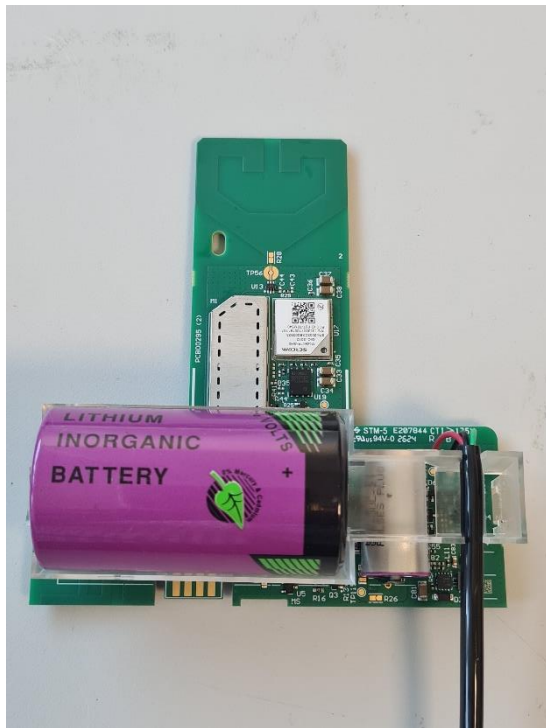
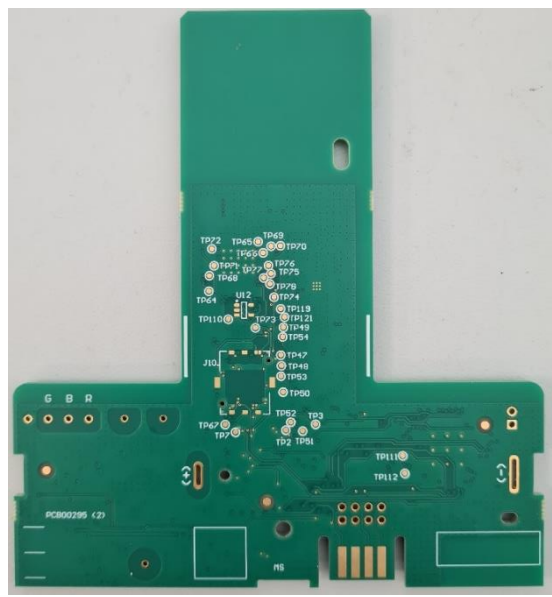
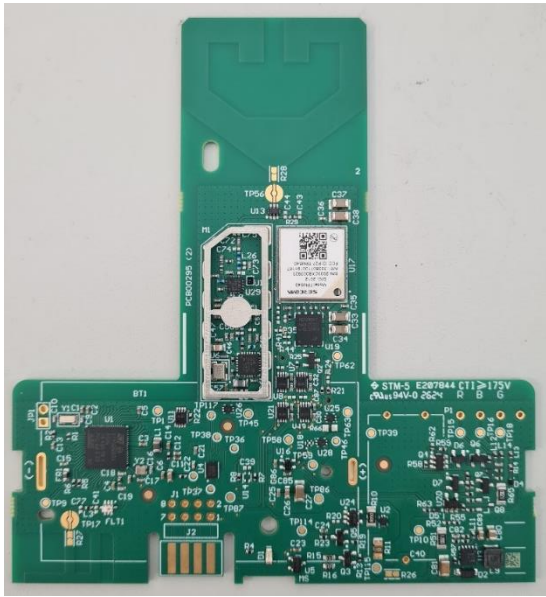
Brand/Item	Type/Model	Short Product description
Allegro Cellular	PIT Unit X	Spread Spectrum Transceiver

External and internal photos of each Model:

PIT Unit X



PIT_Unit X



Appendix B

Allegro Cellular PIT_Unit X, is a battery-operated radio module designed for automated water meter reading. The Allegro cellular is capable of reading water consumption data from residential and commercial water meters equipped with an Encoder or Solid-State Register.

Subset product of: Allegro Cellular

PIT Unit X has a subset product which is listed in this document. The subset product has the same enclosure and the same electronic card as its superset product but for the subset product certain components are added to the electronic card compared to the corresponding superset product. The components that are added are not changing the radio functions. The reason for adding these components is because they are required for the functionality of their specific application.

