




>>> 1.3 Specifications

🔍 Form Factor	CardBus
🔍 Operation voltage	3.3 V
🔍 Standard	IEEE802.11b
🔍 Frequency Range	2.4GHz to 2.4835GHz
🔍 Data Rate and Modulation Types	IEEE 802.11b(Auto-Fallback): <ul style="list-style-type: none">- CCK @ 5.5 and 11 Mbps- DQPSK @ 2Mbps- DBPSK @ 1 Mbps
🔍 Operating Channels	- 11
🔍 Media Access Protocol	CSMA/CA
🔍 Security / Encryption	64-/128-bit WEP
🔍 Range	Open Space: <ul style="list-style-type: none">- 170m @ 11 Mbps Indoor: <ul style="list-style-type: none">- 120m @ 11 Mbps
🔍 Antenna	Internal diversity
🔍 Operating system	Microsoft® Windows® 98SE/ ME/2000/XP

 Environmental	Operating Temperature: 0 ~ 55°C Operating Humidity: 0 ~ 95%, non-condensing
 EMI Compliance	FCC, CE, BSMI, DGT
 Dimensions (WxDxH)	115 X 54 X 7mm
 Weight	38.5g

>>> 1.4 System Requirements

Before installing the CB11B2 (MS-6829), your PC should meet the following:



Notebook PC with PC Card slot, or desktop PC with PC Card slot module.



Windows® 98SE/ME/2000/XP operating system.



Minimum 5MB free disk space for installing the driver and utilities.



CD-ROM drive, double speed or higher.

>>> 1.5 Package Contents

Unpack the package and check all the items carefully. If any item contained is damaged or missing, please contact your local dealer as soon as possible. Also, keep the box and packing materials in case you need to ship the unit in the future. The package should contain the following items:



One Wireless 11b CardBus Card.



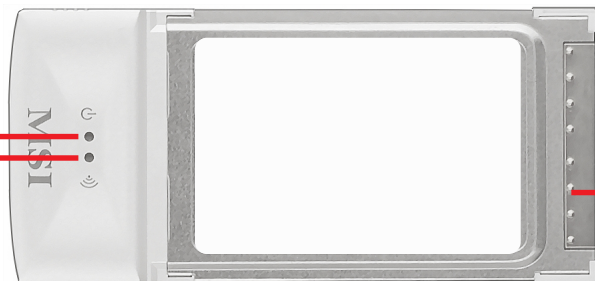
One Quick Installation Guide.



One CD title including drivers, utilities, user's manual and quick guide.

>>> 1.6 Product View

Power LED - Solid **BLUE**, indicating that the CB11B2 (MS-6829) is power on.



Golden Finger

Link LED - **BLUE**, indicating the networking status by:

- ON - CB11B2 (MS-6829) is connected.
- Flash - CB11B2 (MS-6829) is searching for available Access Point or receiving/transmitting data over the wireless network.

2

Hardware Installation

The following diagrams provide you a basic installation for the CB11B2 (MS-6829), including how to install and remove the CardBus adapter.

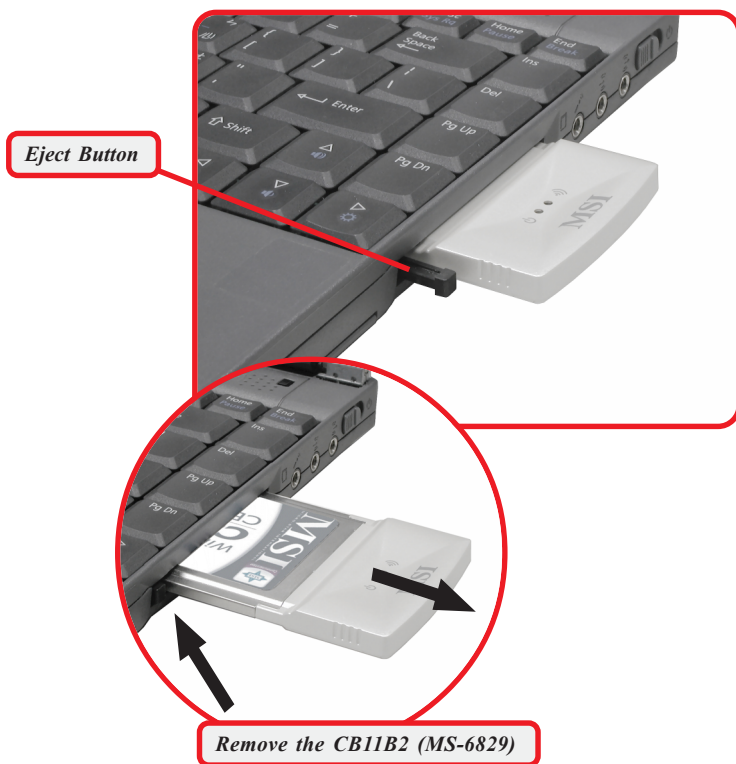
>>> 2.1 Connecting the CB11B2 (MS-6829)

Locate the PC card slot on your notebook computer. If there is the dummy card in the slot, remove it first; then, insert the CB11B2 (MS-6829) into the slot (usually with its label facing up) and push it until it is firmly seated.



>>> 2.2 Removing the CB11B2

Press the Eject Button to make it stretch out. Push the Eject Button and the CB11B2 (MS-6829) will slide out slightly. Then, pull it out of the slot.



Before removing the CB11B2 (MS-6829), you should stop the device in Windows operating system.