



Quick Start Guide



All software & files can be downloaded from
<https://www.milesight.com/iot/resources/download-center/#documents>

Better Inside, More in Sight

Xiamen Milesight IoT Co., Ltd. | www.milesight.com
Building C09, Software Park Phase III, Xiamen 361024, Fujian, China



QUICK START GUIDE

Wi-Fi HaLow Gateway

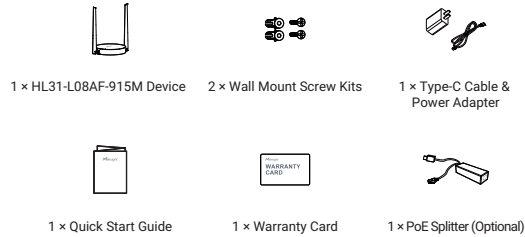


HL31-L08AF-915M

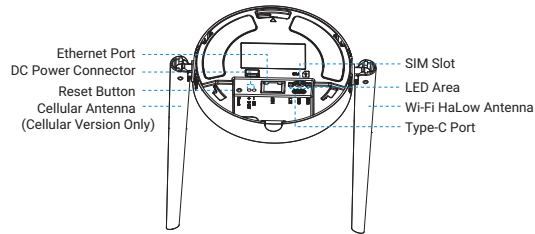
Table of Contents

1. Packing List.....	2
2. Hardware Introduction.....	2
3. SIM Card Installation (Cellular Version Only).....	3
4. Power Supply.....	3
5. Installation.....	4
6. Web GUI Access.....	6
7. FCC Statement.....	8

1. Packing List



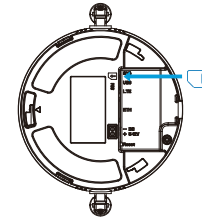
2. Hardware Introduction



Reset to Factory Default: press and hold on the reset button for more than 5s until the SYS LED quickly blinks.

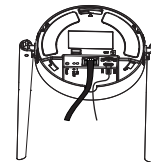
3. SIM Card Installation (Cellular Version Only)

Insert the micro SIM card into the device according to arrows as follows. If you need to take out the SIM card, press the SIM card and it will pop up automatically. This is only applicable to the cellular version device which PN includes "-L".

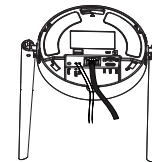


4. Power Supply

HL31-L08AF-915M can be powered by either a USB port (5V) or a DC power connector (5-12V) by default. It is necessary to connect a USB cable or a DC power cable, and an Ethernet cable to corresponding interfaces, then pass them through the groove.

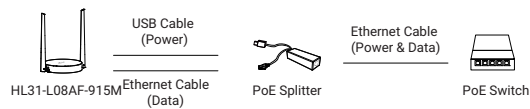


USB Powered



DC Powered

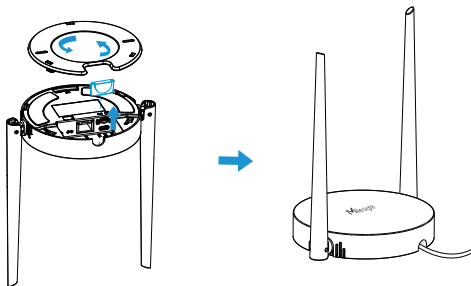
Additionally, it can also be powered by an 802.3af standard PoE source via a PoE splitter.



5. Installation

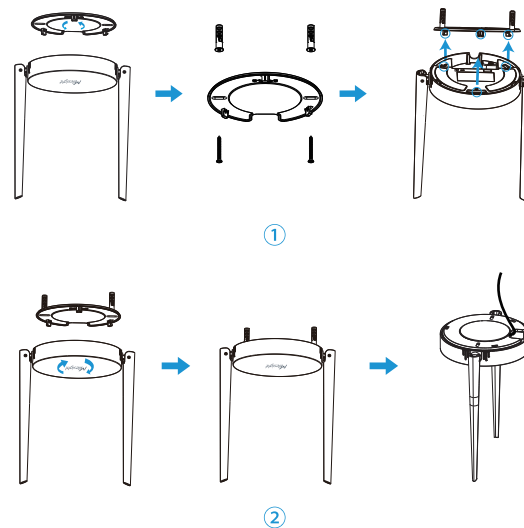
Desktop

Take off the baffle and mounting plate on the back of the device, then you can place the device on the desktop.



Ceiling or Wall Mounting

1. Take off the mounting plate on the back of the device, drill 2 holes in the wall or ceiling according to the mounting plate, then fix the wall plugs into the wall or ceiling.
2. Fix the mounting plate to the wall plugs with screws, then turn the device clockwise to lock it onto the mounting plate.



6. Web GUI Access

HF31 provides a web-based configuration interface for management. If it is the first time you configure the device, please use the default settings listed below:

ETH IP Address: **192.168.23.150**

Wi-Fi IP Address: **192.168.1.1**

Wi-Fi AP: **Gateway_*******

Username: **admin**

Password: **password**

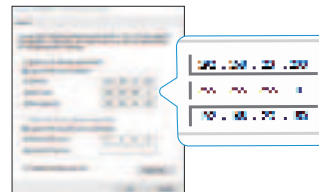
Here are 2 ways of accessing the web GUI:

- **Wireless Mode:** Enable Wireless Network Connection on your computer and search for access point "Gateway_*****" to connect it. Then, type 192.168.1.1 to your Internet browser to log in the web GUI of HL31-L08AF-915M.
- **Wired Mode:** Connect HL31-L08AF-915M to your computer via Ethernet port and configure the IP address of computer manually, then type 192.168.23.150 to your browser to log in the web GUI of HL31-L08AF-915M. You can follow the steps below to configure computer IP address manually based on Windows 10 system.

A. Go to "Control Panel" → "Network and Internet" → "Network and Sharing Center", then click "Ethernet" (It may have different names).



B. Go to "Properties" → "Internet Protocol Version 4 (TCP/IPv4)" and select "Use the following IP address", then assign a static IP manually within the same subnet of HL31-L08AF-915M.



7. FCC Statement

Any changes or modifications not expressly approved by the party responsible for compliance could void the user's authority to operate the equipment. This device complies with part 15 of the FCC Rules. Operation is subject to the following two conditions:

- (1) This device may not cause harmful interference, and.
- (2) This device must accept any interference received, including interference that may cause undesired operation.

Note: This equipment has been tested and found to comply with the limits for a Class B digital device, pursuant to part 15 of the FCC Rules. These limits are designed to provide reasonable protection against harmful interference in a residential installation. This equipment generates, uses and can radiate radio frequency energy and, if not installed and used in accordance with the instructions, may cause harmful interference to radio communications. However, there is no guarantee that interference will not occur in a particular installation. If this equipment does cause harmful interference to radio or television reception, which can be determined by turning the equipment off and on, the user is encouraged to try to correct the interference by one or more of the following measures:

- Reorient or relocate the receiving antenna.
- Increase the separation between the equipment and receiver.
- Connect the equipment into an outlet on a circuit different from that to which the receiver is connected.
- Consult the dealer or an experienced radio/TV technician for help.

FCC Radiation Exposure Statement:

This equipment complies with FCC radiation exposure limits set forth for an uncontrolled environment. This equipment should be installed and operated with minimum distance 20cm between the radiator& your body. This transmitter must not be co-located or operating in conjunction with any other antenna or transmitter.