

November 4, 2015

Federal Communications Commission  
445 12<sup>th</sup> Street SW  
Washington, DC 20554

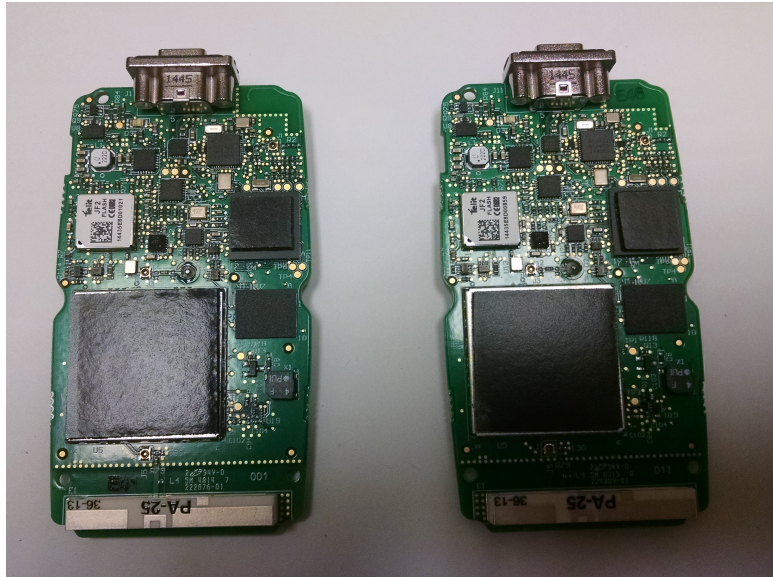
Subject: ANT + 15.247, Report Number: 101941214LEX-003

ANT+ report of Qollector1, FCC ID: C9O-QOLL1 and IC: 10161A-QOLL1 is representative of Qollector2, FCC ID: C9O-QOLL2, IC: 10161A-QOLL2 model.

The below internal photos of the device are the side by side comparison to justify the reasoning of why the Qollector1 is representative of Qollector2:



*Illustration 1: Qollector1 on left, Qollector2 on right*



*Illustration 2: s*

The two devices are functionally equivalent, except that Collector1 contains a Telit CE910 cell module and Collector2 contains a Telit HE910 cell module. Because no other differences exist, I believe test results for the ANT+ transceiver are equivalent for both parts.

If you have any questions or comments, please do not hesitate to contact me.

Sincerely,

Taz Sears  
Team Leader, *Power and Data*  
(605) 641-2365