	<b>Annex A: System Check</b>
	<b>Tested Model : X5</b>
	<b>Report Number: FCC17030156A-6</b>

## I. RESULTS

<b><u>TYPE</u></b>	<b><u>BAND</u></b>	<b><u>PARAMETERS</u></b>
<b>Validation</b>	<b>CW835</b>	<u>Measurement 1</u> : Validation Plane with Dipole device position on Middle Channel in CW mode
<b>Validation</b>	<b>CW835</b>	<u>Measurement 2</u> : Validation Plane with Dipole device position on Middle Channel in CW mode
<b>Validation</b>	<b>CW1800</b>	<u>Measurement 3</u> : Validation Plane with Dipole device position on Middle Channel in CW mode
<b>Validation</b>	<b>CW1800</b>	<u>Measurement 4</u> : Validation Plane with Dipole device position on Middle Channel in CW mode
<b>Validation</b>	<b>CW1900</b>	<u>Measurement 5</u> : Validation Plane with Dipole device position on Middle Channel in CW mode
<b>Validation</b>	<b>CW1900</b>	<u>Measurement 6</u> : Validation Plane with Dipole device position on Middle Channel in CW mode
<b>Validation</b>	<b>CW2450</b>	<u>Measurement 7</u> : Validation Plane with Dipole device position on Middle Channel in CW mode
<b>Validation</b>	<b>CW2450</b>	<u>Measurement 8</u> : Validation Plane with Dipole device position on Middle Channel in CW mode

## MEASUREMENT 1

### BODY

Type: Validation measurement (Complete)

Date of measurement: 30/3/2017

Measurement duration: 11 minutes 54 seconds

#### **A. Experimental conditions.**

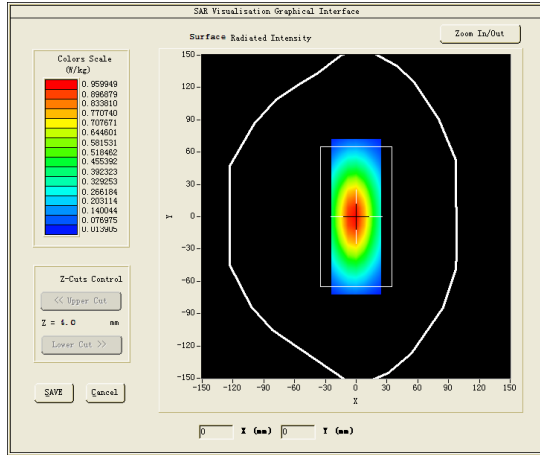
<b><u>Area Scan</u></b>	<u>dx=8mm dy=8mm</u>
<b><u>ZoomScan</u></b>	<u>5x5x7, dx=8mm dy=8mm</u> <u>dz=5mm, Complete</u>
<b><u>Phantom</u></b>	<u>Validation plane</u>
<b><u>Device Position</u></b>	<u>Dipole</u>
<b><u>Band</u></b>	<u>CW835</u>
<b><u>Channels</u></b>	<u>Middle</u>
<b><u>Signal</u></b>	<u>CW (Crest factor: 1.0)</u>

#### **B. SAR Measurement Results**

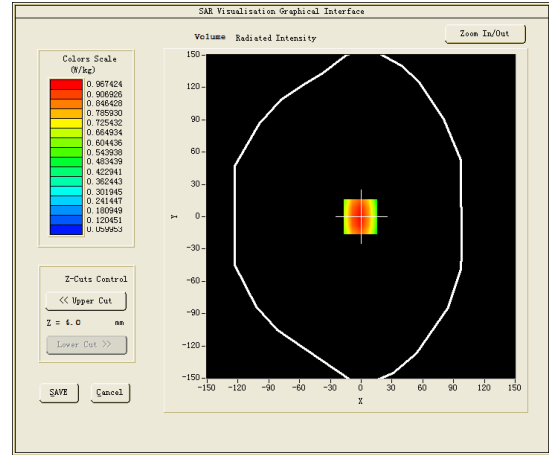
Middle Band SAR (Channel -1):

<b>Frequency (MHz)</b>	835.000000
<b>Relative permittivity (real part)</b>	53.927799
<b>Relative permittivity (imaginary part)</b>	21.281300
<b>Conductivity (S/m)</b>	0.987216
<b>Variation (%)</b>	0.120000

## SURFACE SAR



## VOLUME SAR

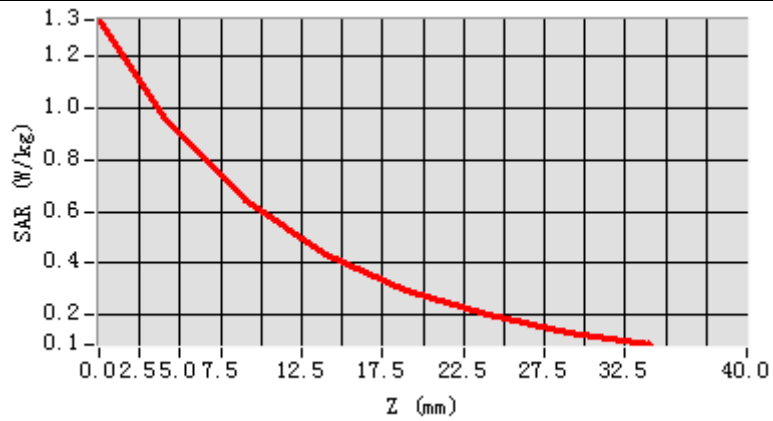


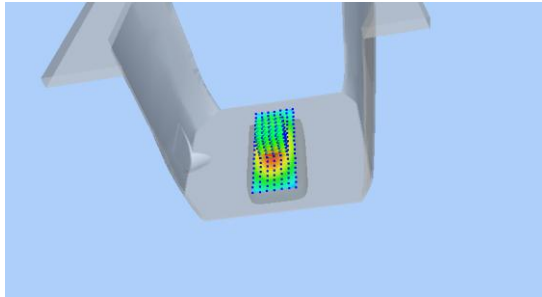
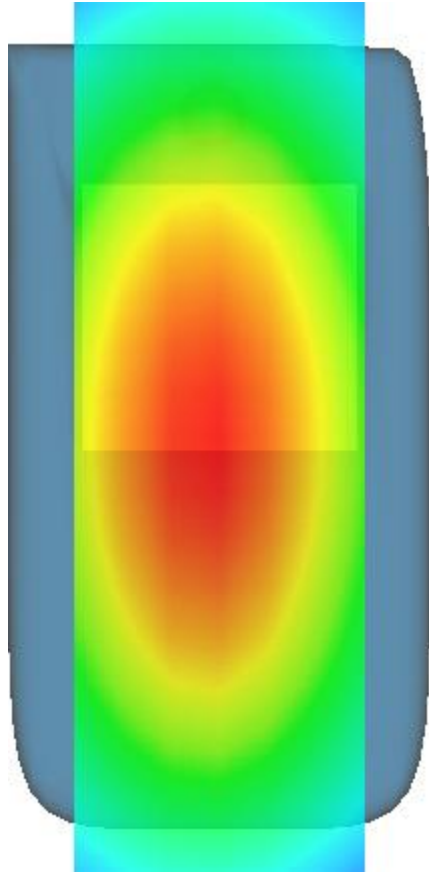
**Maximum location: X=-1.00, Y=0.00**

**SAR Peak: 1.44 W/kg**

<b>SAR 10g (W/Kg)</b>	6.44746
<b>SAR 1g (W/Kg)</b>	10.14583

Z (mm)	0.00	4.00	9.00	14.00	19.00	24.00	29.00
SAR (W/Kg)	1.3418	0.9674	0.6426	0.4358	0.2947	0.1989	0.1326



3D screen shot	Hot spot position
	

## MEASUREMENT 2

### HEAD

Type: Validation measurement (Complete)

Date of measurement: 30/3/2017

Measurement duration: 11 minutes 54 seconds

#### **A. Experimental conditions.**

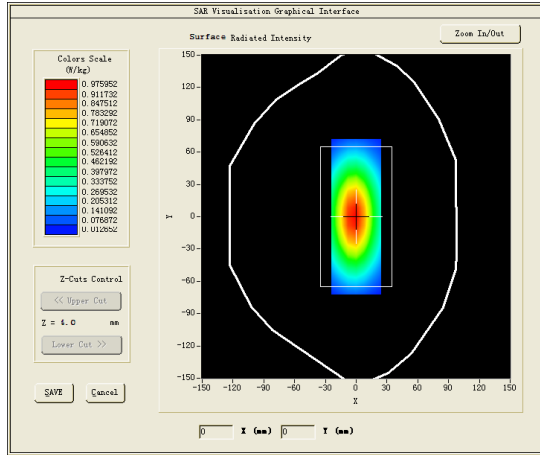
<b><u>Area Scan</u></b>	<u>dx=8mm dy=8mm</u>
<b><u>ZoomScan</u></b>	<u>5x5x7, dx=8mm dy=8mm</u> <u>dz=5mm, Complete</u>
<b><u>Phantom</u></b>	<u>Validation plane</u>
<b><u>Device Position</u></b>	<u>Dipole</u>
<b><u>Band</u></b>	<u>CW835</u>
<b><u>Channels</u></b>	<u>Middle</u>
<b><u>Signal</u></b>	<u>CW (Crest factor: 1.0)</u>

#### **B. SAR Measurement Results**

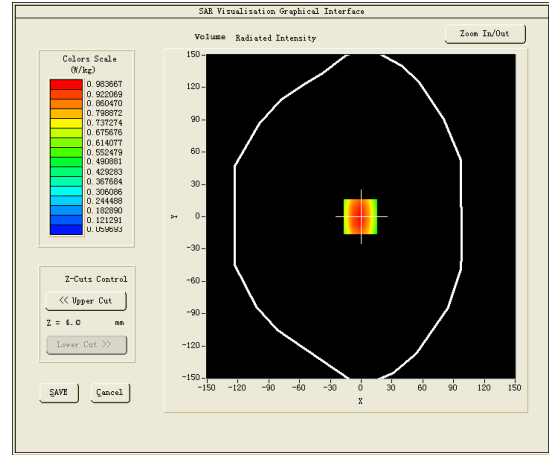
Middle Band SAR (Channel -1):

<b>Frequency (MHz)</b>	835.000000
<b>Relative permittivity (real part)</b>	40.328999
<b>Relative permittivity (imaginary part)</b>	19.880501
<b>Conductivity (S/m)</b>	0.922234
<b>Variation (%)</b>	-0.070000

## SURFACE SAR



## VOLUME SAR

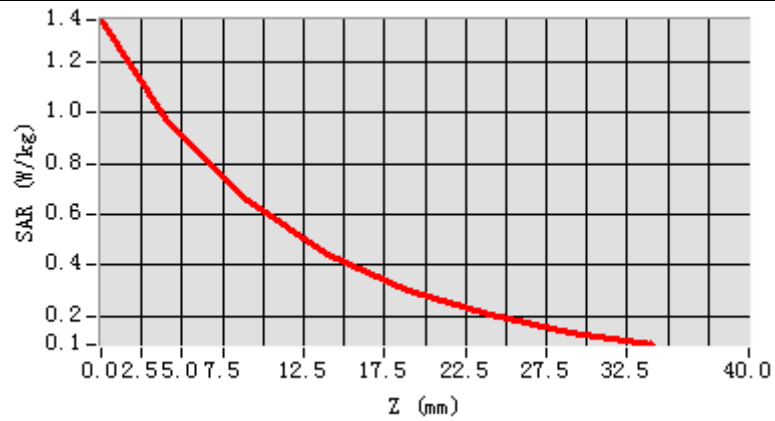


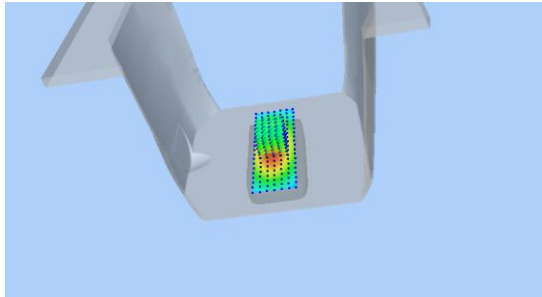
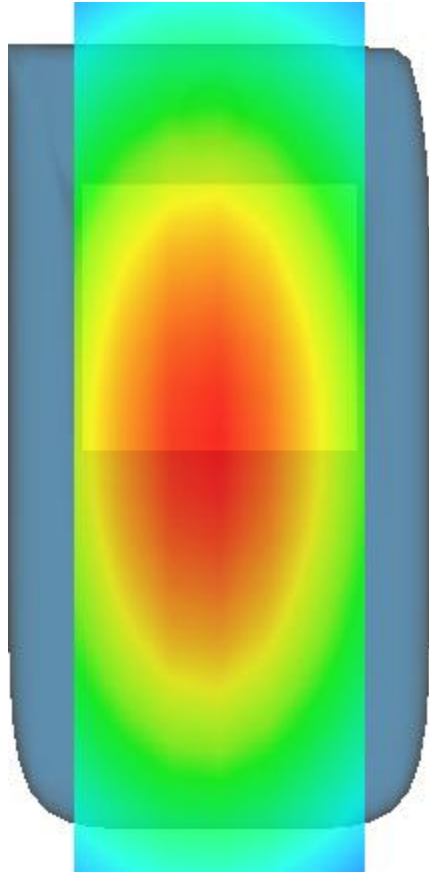
**Maximum location: X=-1.00, Y=0.00**

**SAR Peak: 1.37 W/kg**

<b>SAR 10g (W/Kg)</b>	6.15004
<b>SAR 1g (W/Kg)</b>	9.70049

Z (mm)	0.00	4.00	9.00	14.00	19.00	24.00	29.00
SAR (W/Kg)	1.3669	0.9837	0.6529	0.4412	0.2993	0.2017	0.1343



3D screen shot	Hot spot position
	

## MEASUREMENT 3

### BODY

Type: Validation measurement (Complete)

Date of measurement: 5/4/2017

Measurement duration: 11 minutes 43 seconds

### A. Experimental conditions.

<b><u>Area Scan</u></b>	<u>dx=8mm dy=8mm</u>
<b><u>ZoomScan</u></b>	<u>5x5x7, dx=8mm dy=8mm</u> <u>dz=5mm, Complete</u>
<b><u>Phantom</u></b>	<u>Validation plane</u>
<b><u>Device Position</u></b>	<u>Dipole</u>
<b><u>Band</u></b>	<u>CW1800</u>
<b><u>Channels</u></b>	<u>Middle</u>
<b><u>Signal</u></b>	<u>CW (Crest factor: 1.0)</u>

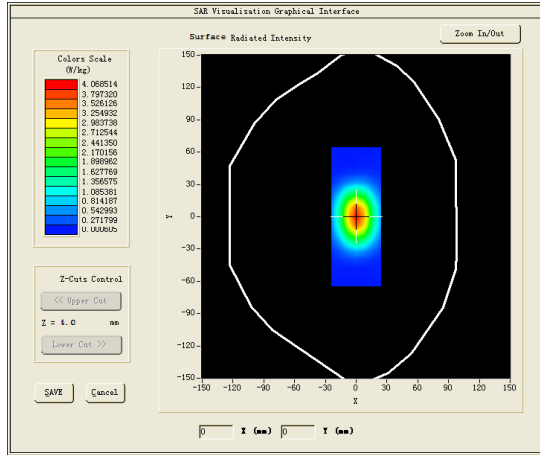
### B. SAR Measurement Results

Middle Band SAR (Channel -1):

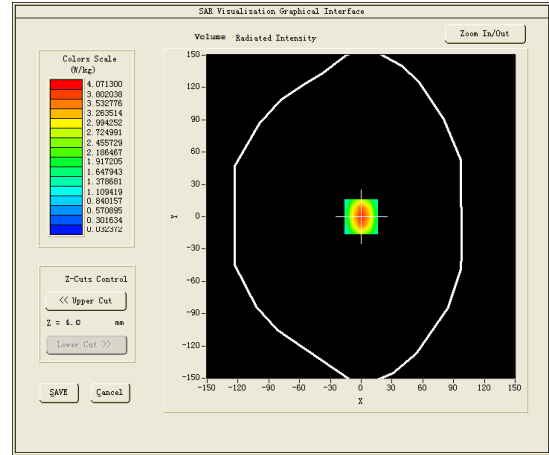
<b>Frequency (MHz)</b>	1800.000000
<b>Relative permittivity (real part)</b>	52.970200
<b>Relative permittivity (imaginary part)</b>	15.414900
<b>Conductivity (S/m)</b>	1.541490
<b>Variation (%)</b>	-0.080000



## SURFACE SAR



## VOLUME SAR

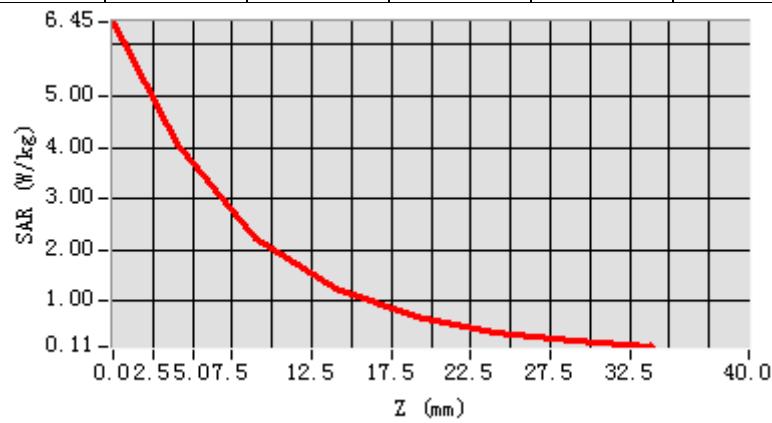


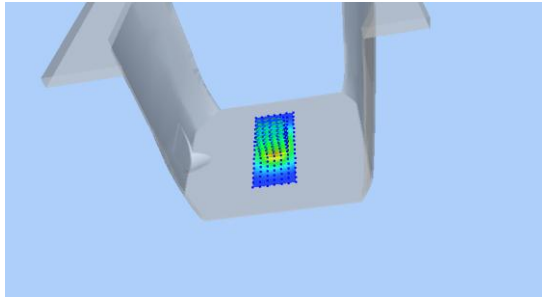
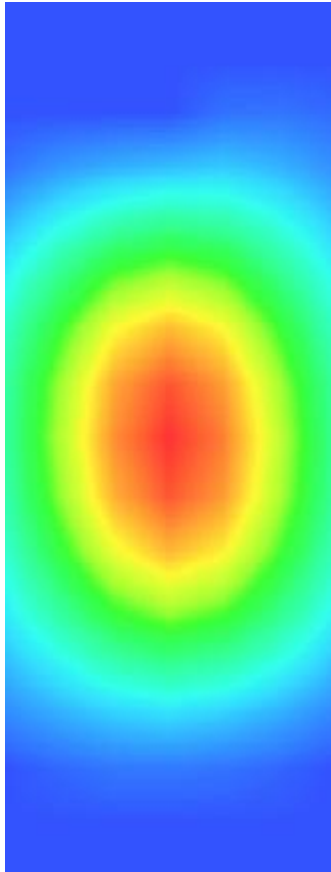
**Maximum location: X=0.00, Y=0.00**

**SAR Peak: 6.86 W/kg**

<b>SAR 10g (W/Kg)</b>	21.71523
<b>SAR 1g (W/Kg)</b>	41.55761

Z (mm)	0.00	4.00	9.00	14.00	19.00	24.00	29.00
SAR (W/Kg)	6.4478	4.0713	2.2310	1.2495	0.7043	0.3895	0.2089



3D screen shot	Hot spot position
	

## MEASUREMENT 4

### HEAD

Type: Validation measurement (Complete)

Date of measurement: 5/4/2017

Measurement duration: 11 minutes 41 seconds

#### **A. Experimental conditions.**

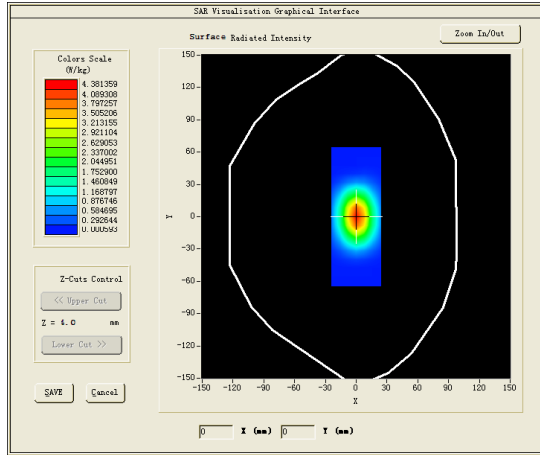
<b><u>Area Scan</u></b>	<u>dx=8mm dy=8mm</u>
<b><u>ZoomScan</u></b>	<u>5x5x7, dx=8mm dy=8mm</u> <u>dz=5mm, Complete</u>
<b><u>Phantom</u></b>	<u>Validation plane</u>
<b><u>Device Position</u></b>	<u>Dipole</u>
<b><u>Band</u></b>	<u>CW1800</u>
<b><u>Channels</u></b>	<u>Middle</u>
<b><u>Signal</u></b>	<u>CW (Crest factor: 1.0)</u>

#### **B. SAR Measurement Results**

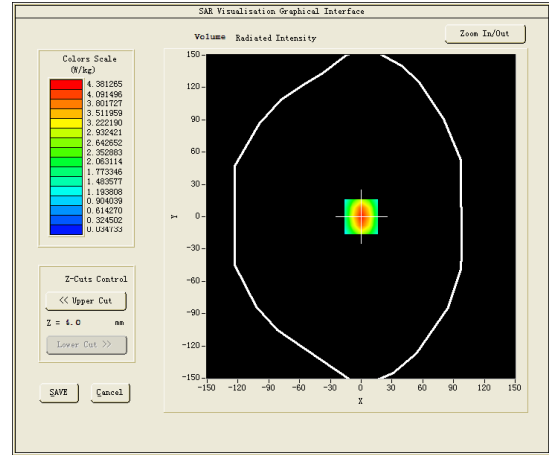
Middle Band SAR (Channel -1):

<b>Frequency (MHz)</b>	1800.000000
<b>Relative permittivity (real part)</b>	39.484501
<b>Relative permittivity (imaginary part)</b>	14.358300
<b>Conductivity (S/m)</b>	1.435830
<b>Variation (%)</b>	0.610000

## SURFACE SAR



## VOLUME SAR

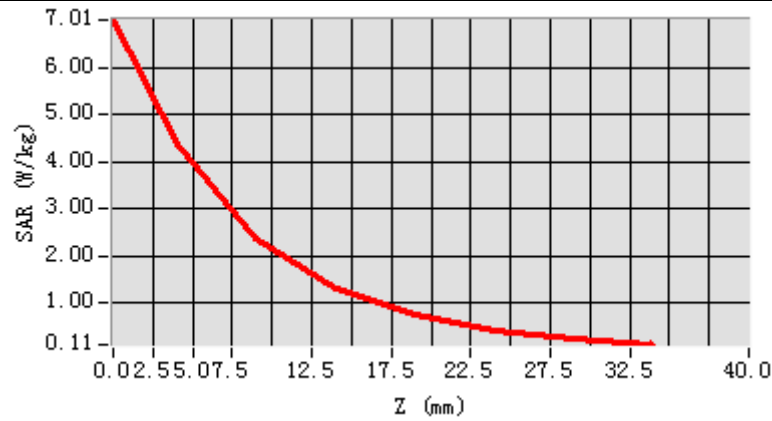


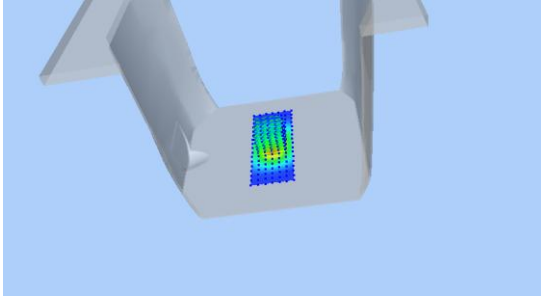
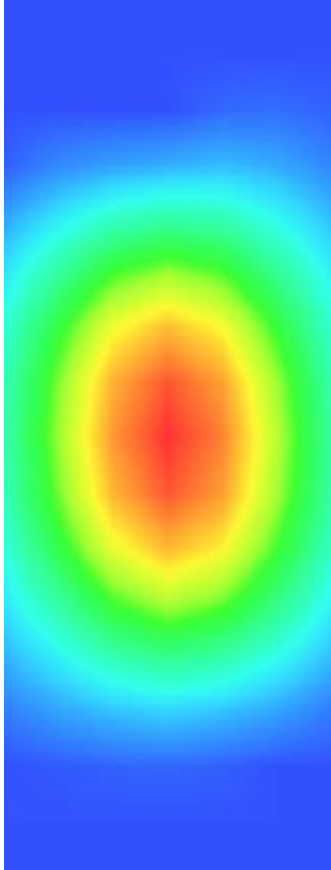
**Maximum location: X=0.00, Y=0.00**

**SAR Peak: 6.95 W/kg**

<b>SAR 10g (W/Kg)</b>	21.60484
<b>SAR 1g (W/Kg)</b>	41.98096

Z (mm)	0.00	4.00	9.00	14.00	19.00	24.00	29.00
SAR (W/Kg)	7.0118	4.3813	2.3674	1.3177	0.7415	0.4093	0.2206



3D screen shot	Hot spot position
	

## MEASUREMENT 5

### BODY

Type: Validation measurement (Complete)

Date of measurement: 29/3/2017

Measurement duration: 10 minutes 57 seconds

### A. Experimental conditions.

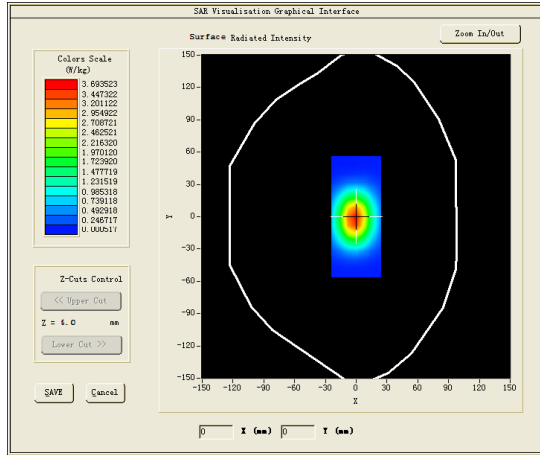
<b><u>Area Scan</u></b>	<u>dx=8mm dy=8mm</u>
<b><u>ZoomScan</u></b>	<u>5x5x7, dx=8mm dy=8mm</u> <u>dz=5mm, Complete</u>
<b><u>Phantom</u></b>	<u>Validation plane</u>
<b><u>Device Position</u></b>	<u>Dipole</u>
<b><u>Band</u></b>	<u>CW1900</u>
<b><u>Channels</u></b>	<u>Middle</u>
<b><u>Signal</u></b>	<u>CW (Crest factor: 1.0)</u>

### B. SAR Measurement Results

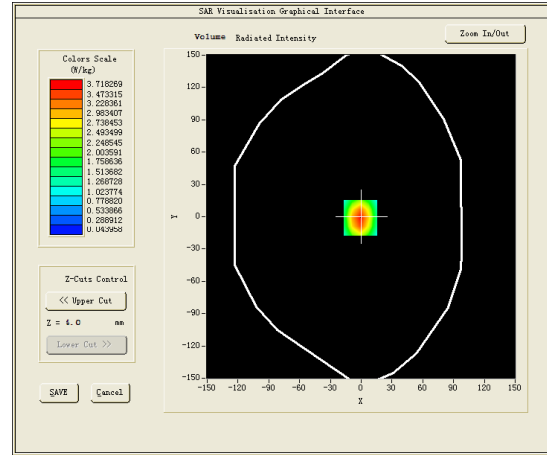
Middle Band SAR (Channel -1):

<b>Frequency (MHz)</b>	1900.000000
<b>Relative permittivity (real part)</b>	53.365299
<b>Relative permittivity (imaginary part)</b>	14.757600
<b>Conductivity (S/m)</b>	1.557747
<b>Variation (%)</b>	-0.450000

## SURFACE SAR



## VOLUME SAR

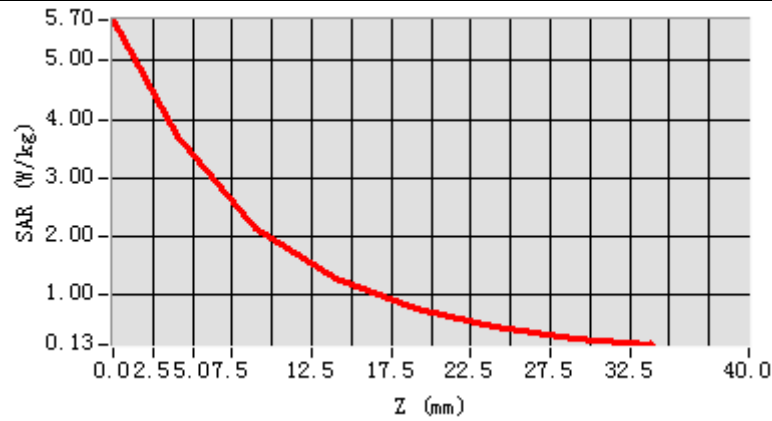


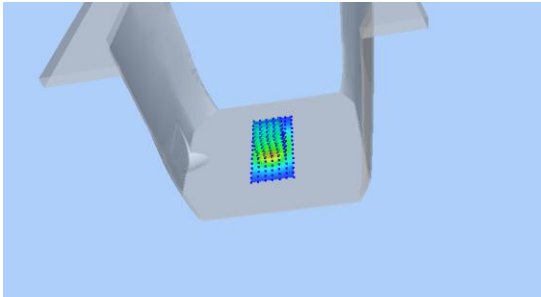
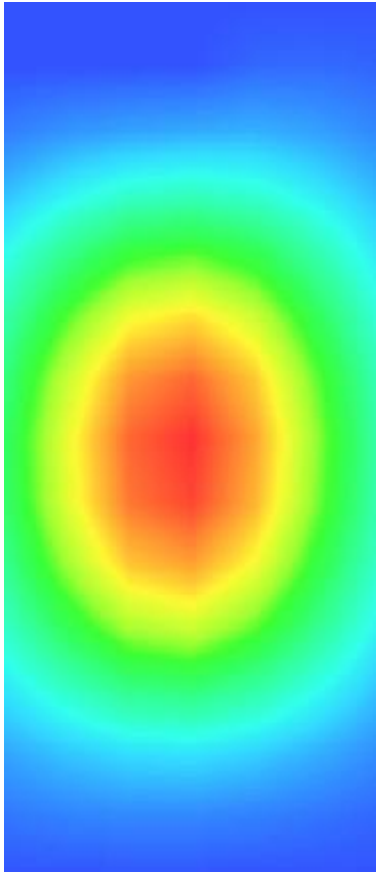
**Maximum location: X=-1.00, Y=-1.00**

**SAR Peak: 6.26 W/kg**

<b>SAR 10g (W/Kg)</b>	20.93533
<b>SAR 1g (W/Kg)</b>	39.32904

Z (mm)	0.00	4.00	9.00	14.00	19.00	24.00	29.00
SAR (W/Kg)	5.7034	3.7183	2.1347	1.2560	0.7338	0.4260	0.2429



3D screen shot	Hot spot position
	



## MEASUREMENT 6

### HEAD

Type: Validation measurement (Complete)

Date of measurement: 29/3/2017

Measurement duration: 11 minutes 6 seconds

#### **A. Experimental conditions.**

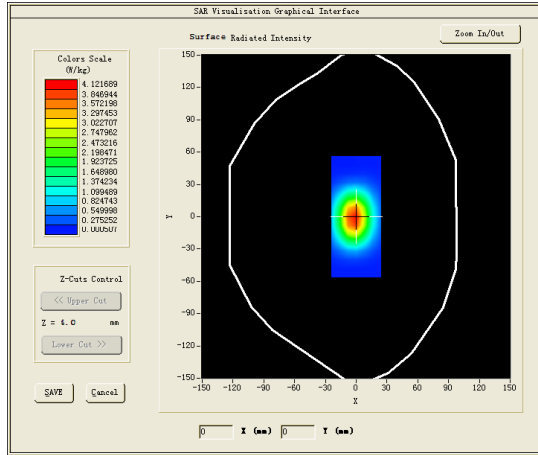
<b><u>Area Scan</u></b>	<u>dx=8mm dy=8mm</u>
<b><u>ZoomScan</u></b>	<u>5x5x7, dx=8mm dy=8mm</u> <u>dz=5mm, Complete</u>
<b><u>Phantom</u></b>	<u>Validation plane</u>
<b><u>Device Position</u></b>	<u>Dipole</u>
<b><u>Band</u></b>	<u>CW1900</u>
<b><u>Channels</u></b>	<u>Middle</u>
<b><u>Signal</u></b>	<u>CW (Crest factor: 1.0)</u>

#### **B. SAR Measurement Results**

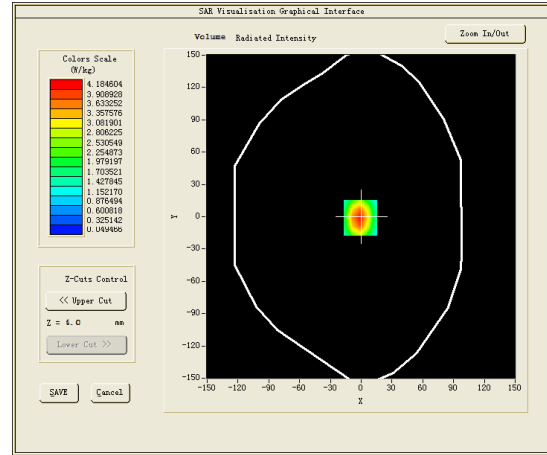
Middle Band SAR (Channel -1):

<b>Frequency (MHz)</b>	1900.000000
<b>Relative permittivity (real part)</b>	39.976398
<b>Relative permittivity (imaginary part)</b>	13.386300
<b>Conductivity (S/m)</b>	1.412998
<b>Variation (%)</b>	-0.040000

## SURFACE SAR



## VOLUME SAR

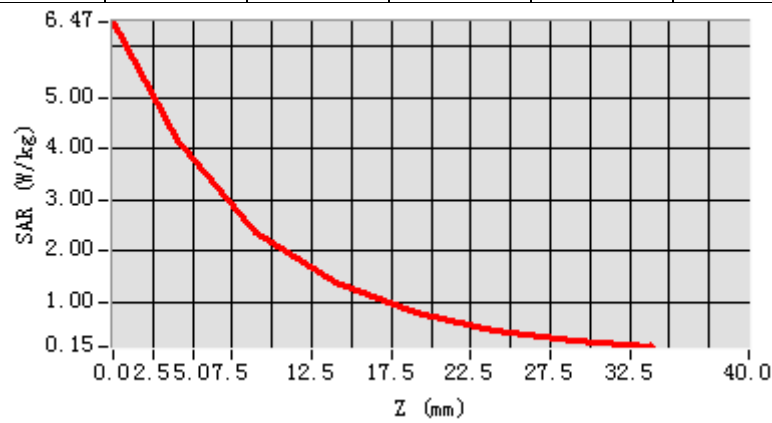


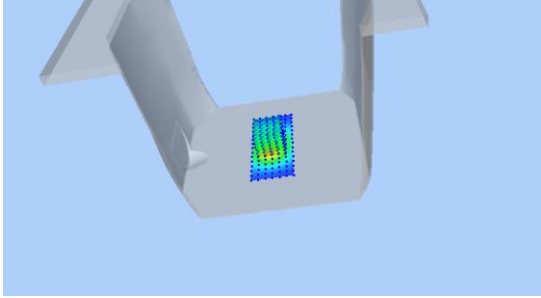
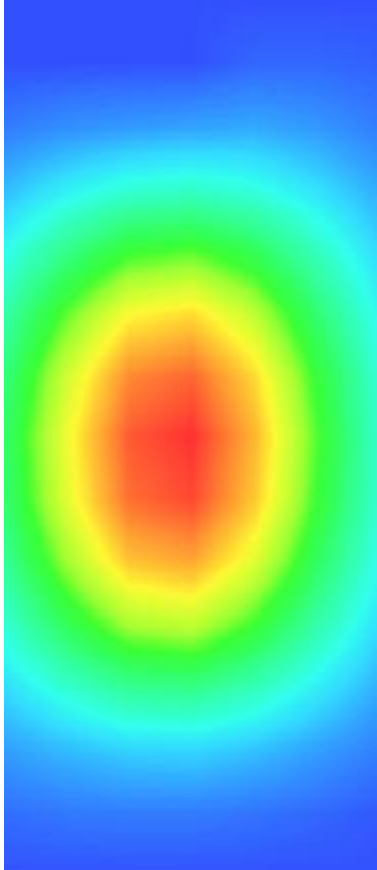
**Maximum location: X=-1.00, Y=-1.00**

**SAR Peak: 6.48 W/kg**

<b>SAR 10g (W/Kg)</b>	21.07104
<b>SAR 1g (W/Kg)</b>	39.97625

Z (mm)	0.00	4.00	9.00	14.00	19.00	24.00	29.00
SAR (W/Kg)	6.4693	4.1846	2.3780	1.3892	0.8084	0.4680	0.2662



3D screen shot	Hot spot position
	

## MEASUREMENT 7

### BODY

Type: Validation measurement (Complete)

Date of measurement: 28/3/2017

Measurement duration: 9 minutes 46 seconds

### A. Experimental conditions.

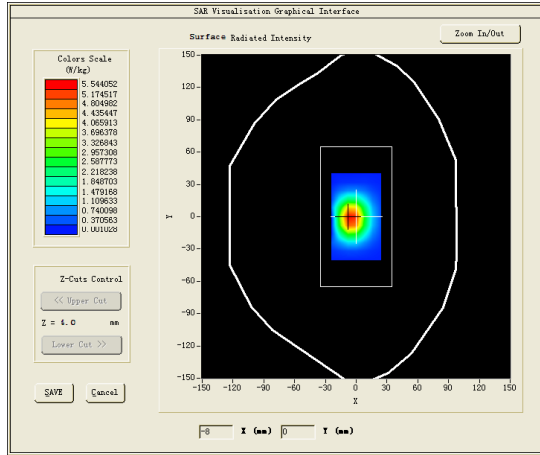
<b><u>Area Scan</u></b>	<u>dx=8mm dy=8mm</u>
<b><u>ZoomScan</u></b>	<u>5x5x7, dx=8mm dy=8mm</u> <u>dz=5mm, Complete</u>
<b><u>Phantom</u></b>	<u>Validation plane</u>
<b><u>Device Position</u></b>	<u>Dipole</u>
<b><u>Band</u></b>	<u>CW2450</u>
<b><u>Channels</u></b>	<u>Middle</u>
<b><u>Signal</u></b>	<u>CW (Crest factor: 1.0)</u>

### B. SAR Measurement Results

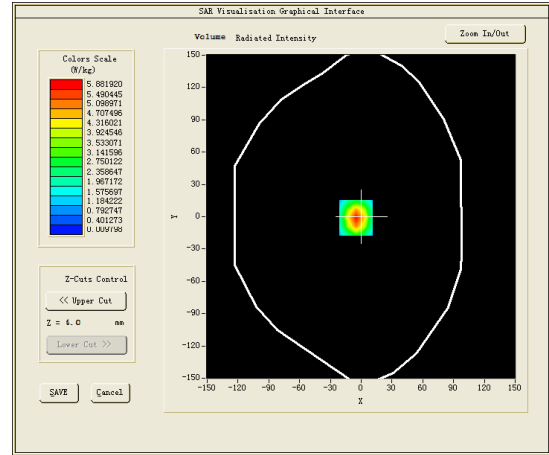
Middle Band SAR (Channel -1):

<b>Frequency (MHz)</b>	2450.000000
<b>Relative permittivity (real part)</b>	52.735699
<b>Relative permittivity (imaginary part)</b>	14.017300
<b>Conductivity (S/m)</b>	1.907910
<b>Variation (%)</b>	0.390000

## SURFACE SAR



## VOLUME SAR

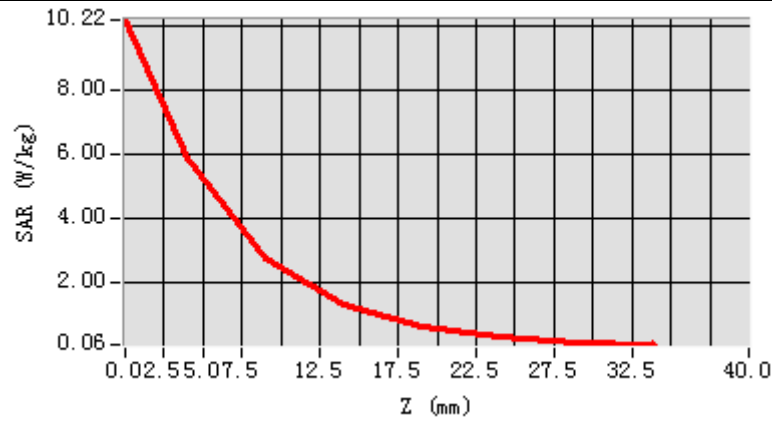


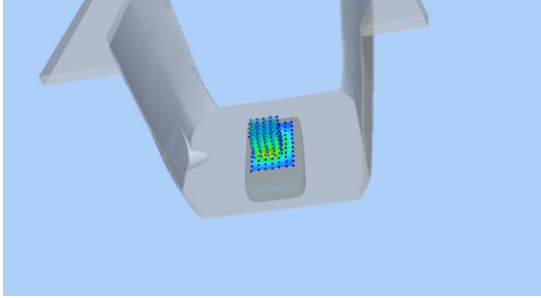
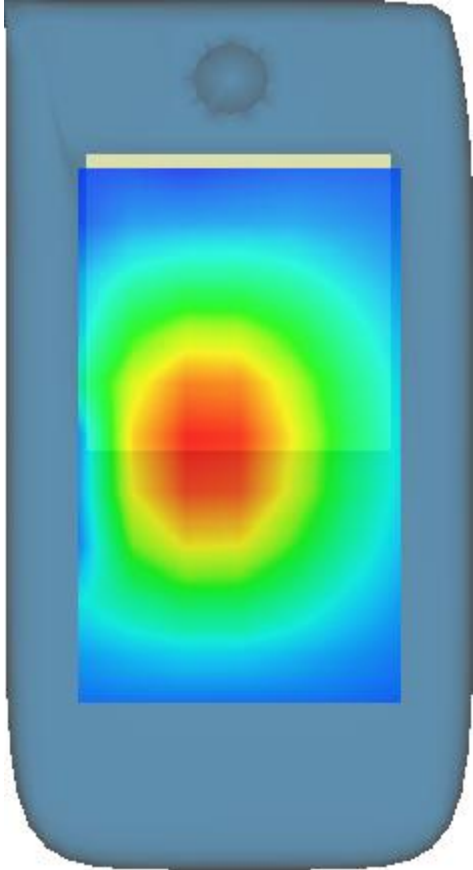
**Maximum location: X=-5.00, Y=-1.00**

**SAR Peak: 10.96 W/kg**

<b>SAR 10g (W/Kg)</b>	23.33453
<b>SAR 1g (W/Kg)</b>	56.33343

Z (mm)	0.00	4.00	9.00	14.00	19.00	24.00	29.00
SAR (W/Kg)	10.2188	5.8819	2.7478	1.3151	0.6266	0.2969	0.1341



3D screen shot	Hot spot position
	

## MEASUREMENT 8

### HEAD

Type: Validation measurement (Complete)

Date of measurement: 28/3/2017

Measurement duration: 9 minutes 46 seconds

#### **A. Experimental conditions.**

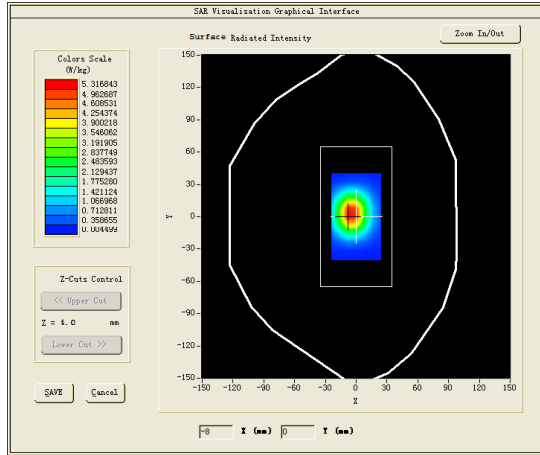
<b><u>Area Scan</u></b>	<u>dx=8mm dy=8mm</u>
<b><u>ZoomScan</u></b>	<u>5x5x7,dx=8mm dy=8mm</u> <u>dz=5mm,Complete</u>
<b><u>Phantom</u></b>	<u>Validation plane</u>
<b><u>Device Position</u></b>	<u>Dipole</u>
<b><u>Band</u></b>	<u>CW2450</u>
<b><u>Channels</u></b>	<u>Middle</u>
<b><u>Signal</u></b>	<u>CW (Crest factor: 1.0)</u>

#### **B. SAR Measurement Results**

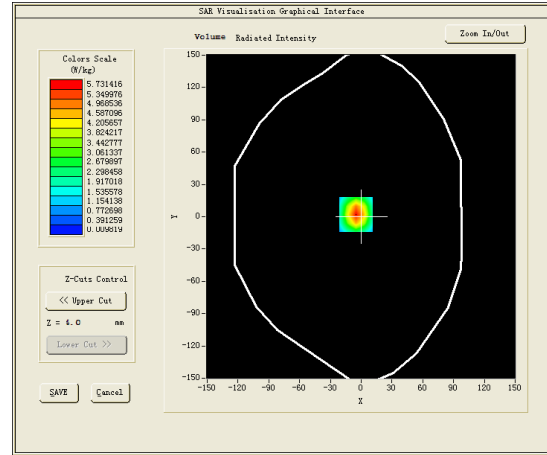
Middle Band SAR (Channel -1):

<b>Frequency (MHz)</b>	2450.000000
<b>Relative permittivity (real part)</b>	39.235699
<b>Relative permittivity (imaginary part)</b>	12.917300
<b>Conductivity (S/m)</b>	1.758188
<b>Variation (%)</b>	2.820000

## SURFACE SAR



## VOLUME SAR



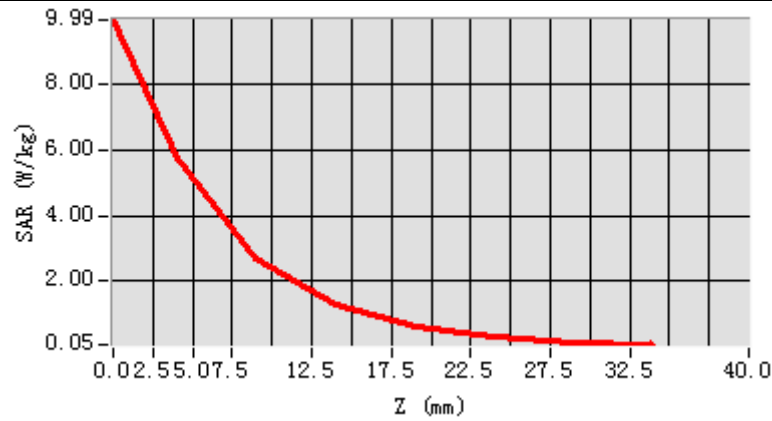
**Maximum location: X=-5.00, Y=2.00**

**SAR Peak: 9.92 W/kg**

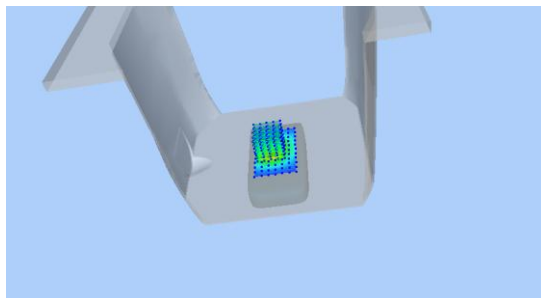
<b>SAR 10g (W/Kg)</b>	24.52895
<b>SAR 1g (W/Kg)</b>	53.93069



Z (mm)	0.00	4.00	9.00	14.00	19.00	24.00	29.00
SAR (W/Kg)	9.9915	5.7314	2.6626	1.2722	0.6047	0.2852	0.1274



**3D screen shot**



**Hot spot position**

