

12. Appendix 3: Test configuration illustration



**Photo # 3.
Base Station + Subscriber Unit
Radiated emission test on open site**

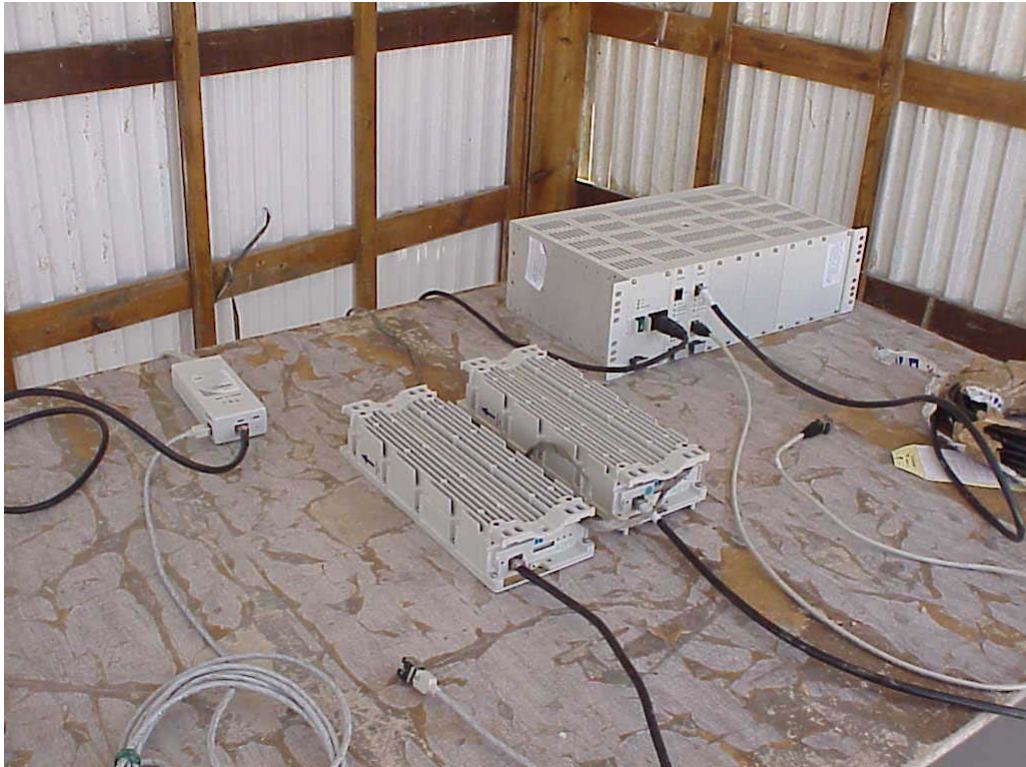
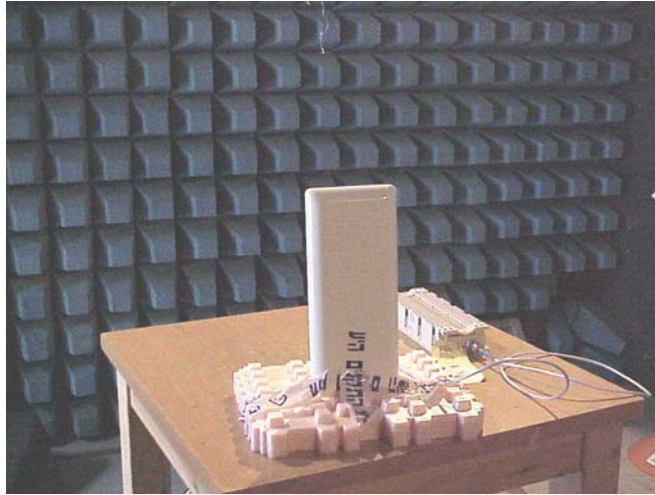


Photo # 4.
Base Station + Subscriber Unit
Radiated emission test on open site



**Photo # 5. P/N AN1152
Spurious emission test**



**Photo # 6.
Radio unit with MTI sector antenna P/N AN1152.
Spurious emission test**



Photo # 7.
Radio unit with Unidirectional antenna UNI-28-4 P/N AN1230
Spurious emission test

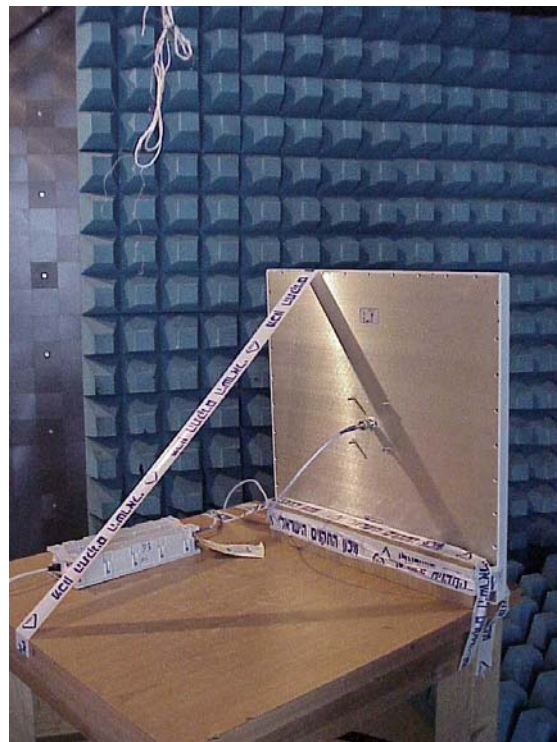


Photo # 8.
Radio unit with Unidirectional antenna UNI-28-4 P/N AN1230
Spurious emission test

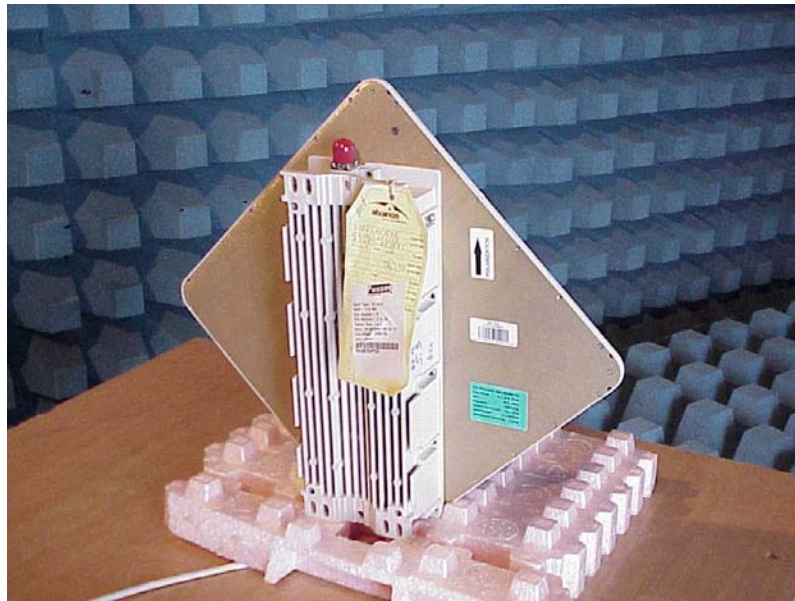


Photo # 9.

**Radio unit with integrated antenna P/N AN1248
Spurious emission test**

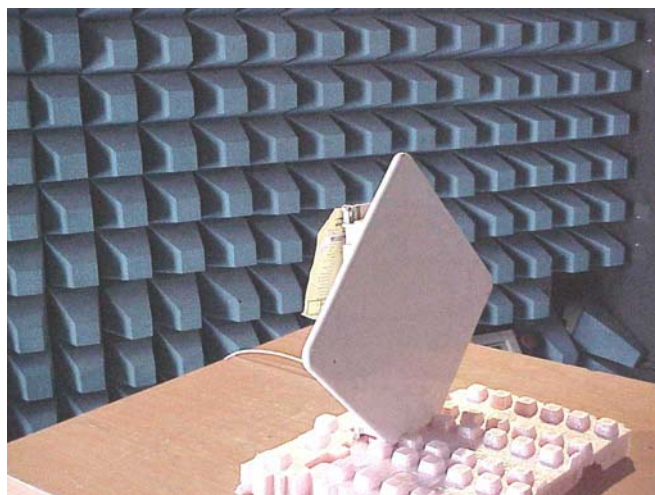


Photo # 10.

**Radio unit with integrated antenna P/N AN1248
Spurious emission test**