

Exhibit 7

## Photographs

Front View



Rear View



**PHILIPS**

20"液晶彩色顯示器

MODEL NO./型號: 200P4

電源: 100-240V ~ 60-50Hz 1.2-0.6 A

MADE IN CHINA FABRIQUÉ EN CHINE 中國製造

FCC ID: A3KM121

Philips Consumer Elec. Co.  
of Suzhou Ltd.  
蘇州飛利浦電子有限公司

No. 161, Zhiquang Road, New District,  
Suzhou 215011, P.R.C.  
蘇州新區錫山路161號

Model ID.: 200P4VG/00  
Manufactured/製造日期: July 2003  
製造日期: 參考銘牌標

This device complies with part 15 of the FCC Rules. Operation is subject to the following two conditions: (1) This device may not cause harmful interference, and (2) This device must accept any interference received, including interference that may cause undesired operation. Apparatus shall not be used in conjunction with any other equipment. Apparatus shall not be used in conjunction with any other equipment.

This class B digital apparatus complies with Canadian ICES 003. Cet appareil numérique de la classe B est conforme à la norme NMB 003 du Canada. As an "Energy Star" Partner, Philips has determined that this product meets the ENERGY STAR® guidelines for energy efficiency.

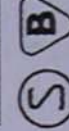
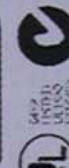
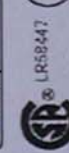
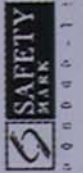
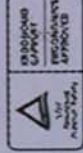


R33048

**WARNING:**

- A) This apparatus must be earthed.
- B) Live parts are made accessible when backcover is removed.
- C) Always remove main plug from wall socket before any service operation. Never remove covers unless qualified to do so.

This unit contains dangerous voltages.





Assembly w/o Base

