

Wireless Vertical Trackball Mouse

Model No: B107LR



User's Guide

Introduction

Congratulations on your purchase of the most innovative Wireless Vertical Trackball Mouse with one additional detachable base for a different angle to find your comfortable hand position. With the naturally upright and relaxed hand position, you may use the mouse more comfortably. The trackball reduce the use of the wrist and the risk of carpal tunnel syndrome. The unique precise cursor control technology can automatically adjust the cursor speed to precisely get to your target points. It offers even more advance that will make you more productive and more comfortable.

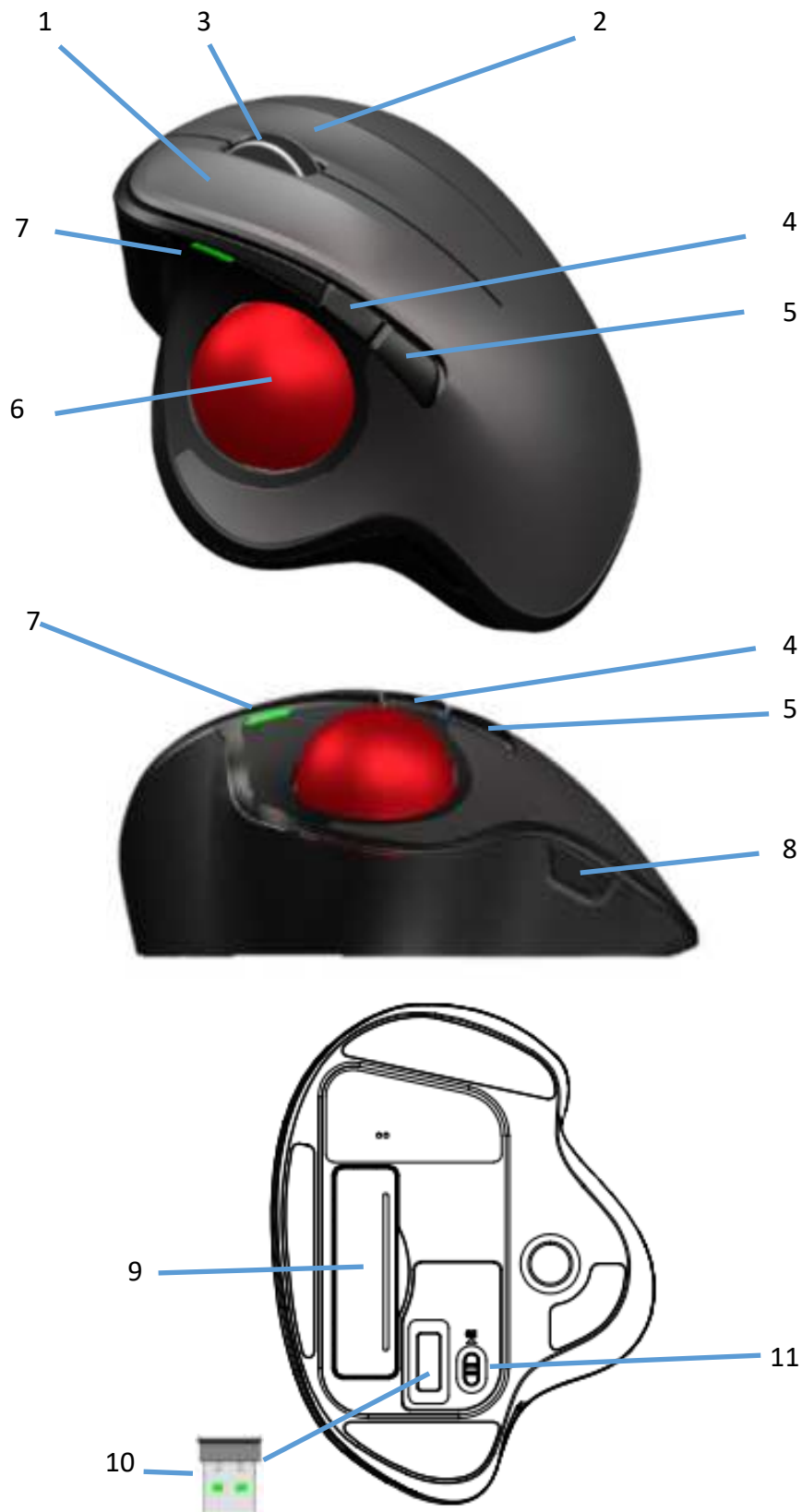
Product Features

- 2.4GHz (distance 6~8m), 16 Channels
- The state-of-the-art sensor for best tracking performance on the trackball
- Auto-Link, Plug and Play! No need to set the channel ID. Power on/off switch.
- Auto-Speed technology automatically adjust your cursor speed to precisely get to the point you want.
- Vertical contour design and two selectable angles make you use the mouse in a more natural and relaxed hand position.
- Three DPI levels switchable: (1) Fixed 600 dpi (2) Auto-Speed 450~1200 dpi (3) Auto-Speed 600~1600 dpi
- Storable Nano Receiver
- 2*AA Alkaline batteries included.
- Mouse Dimension: 127 x 96 x 52 mm; Receiver dimension: 17.6 x 15 x 6 mm

System Requirements

- Microsoft Windows Vista & Windows 7 / 8 /10 or MAC OS X (Button functions may differ on a MAC).
- USB Port

Product Functions





1. Left Button
2. Right Button
3. Scroll Wheel / Middle Button
4. Internet Explorer Forward
5. Internet Explorer Backward
6. 34mm diameter trackball
7. One RED LED indicator:
 - a. Power ON indicator:
ON for 6 seconds when Power is switched to ON.
 - b. Low Power Indicator:
Flash for 6 seconds when battery power is low.
 - c. DPI Switch indicator:
Flash once when switched to fixed 600 dpi; flash twice when switched to auto-speed 450~1200 dpi; flash three times when switched to auto-speed 600~1600 dpi
8. DPI switch button
9. Battery Cover
10. Nano Receiver
11. Power On/Off Switch
12. 10-Degree-Adding Base

(!) Note:

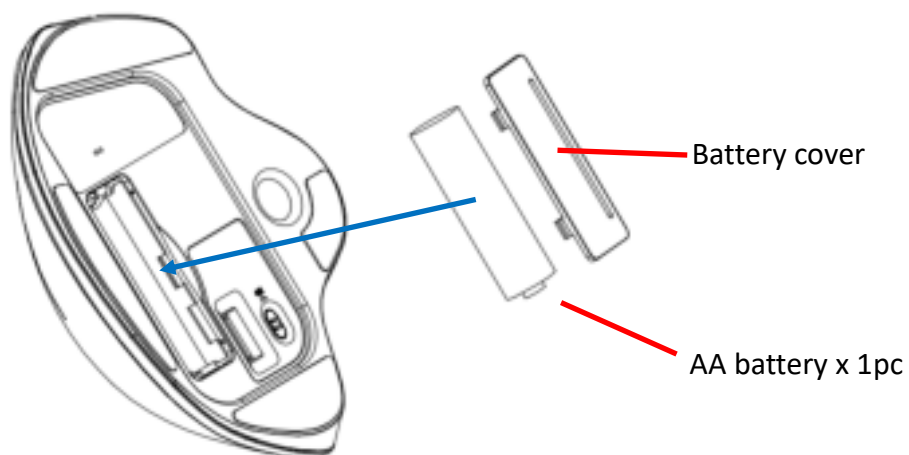
- The unit offers a strong power saving management. Once the mouse accesses the sleeping mode, "to click any button of the mouse" is compulsory to wake it up.

Power On/Off:

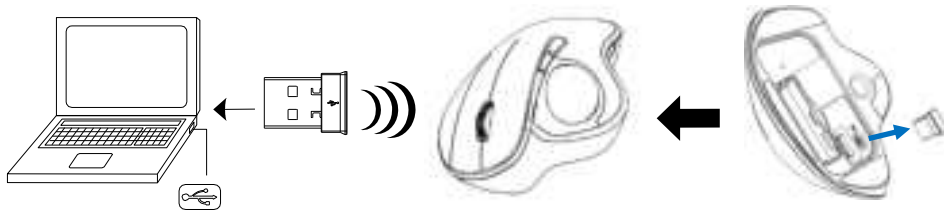
- To save energy for long period of non-usage, switch the On/Off button to Off position to turn off the mouse.
- Users can press the DPI button to change the resolution. The LED will flash once or twice or three times when dpi has been successfully switched.

Operation

1. Insert the batteries
 - a. Lift the battery cover up.
 - b. Insert Alkaline battery AA x 1pc. Please ensure the batteries' polarities (+/-) match the battery compartment's polarities.
 - c. Close the battery cover.
 - d. Switch the Power on-off switch on the bottom of the mouse to the ON position.
 - e. The Low Power LED on the top case will be on for 6 seconds when the power is switched on.



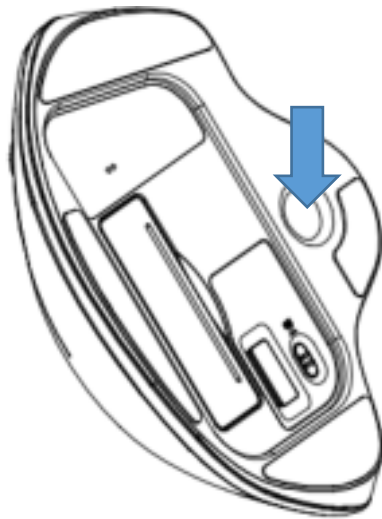
2. Connect the receiver
 - a. Turn on your PC.
 - b. Plug the receiver into the USB port on PC.



3. Communication : the mouse & the receiver
 - a. Make sure the Power On/Off Switch on the bottom of the mouse is ON.
 - b. The mouse and receiver have been successfully linked when the cursor's movement mimics that of the mouse.

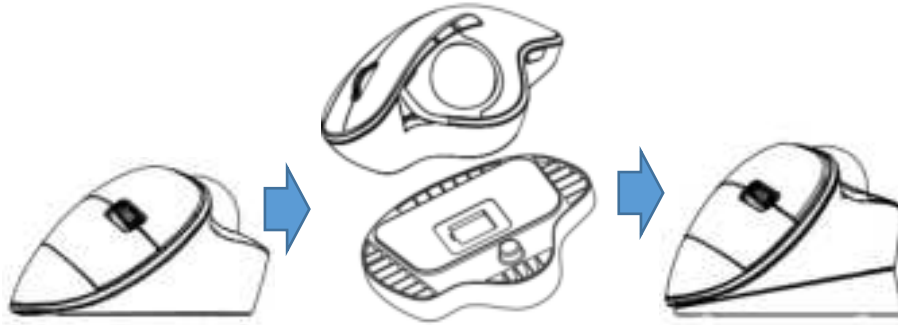
4. Clean the trackball holder

You may use a pen, through the hole at the mouse bottom, to push out the trackball and clean the trackball holder if dirt is inside.



5. 10-Degree Adding Base

There is an additional base to add 10 degree more tilt angle for the mouse. You may select a more comfortable hand position, by using or not to use the base.



(!) Note:

- The mouse, while working if encountering any interference, will automatically source out with the receiver and transfer to another free channel. During the transferring, the cursor movement may have a second delay.

(!) Note:

- The Red LED on the mouse top is the low battery power indicator. Its 6-seconds flashing indicates that the batteries inside the mouse are needed to be replaced.

Trouble Shooting

1. Make sure you have put the batteries in correction directions, and power switch is ON.
2. Make sure you have connected the receiver correctly to the computer's USB port.
3. Try another USB port, in case that your USB port is loose.
4. Replace new batteries if needed when the battery power is low.
5. If mouse performance is slow or intermittent around a wireless network, unplug the Nano receiver from the USB port and then re-insert it. To reactivate the mouse, switch it on, off and on again using the On/Off switch on the bottom of the mouse.
6. Repeat the connection procedure. You can also try moving the mouse closer to the Nano receiver.
7. For the best performance, we suggest that you place the receiver away from other electrical devices.

Battery Use Reminders

1. Remove worn-out batteries from equipment immediately and dispose of them properly.
2. Keep all batteries (used or new) out of the reach of children.
3. Never dispose of batteries in fire.
4. Do not mix old and new batteries. Do not mix alkaline, standard (Carbon-Zinc), or rechargeable (Nickel Cadmium) batteries.
5. Remove the batteries from this device if the device will not be used for a long period of time.
6. If the performance of the battery decreases substantially, it is time to replace the battery.

FCC Statement

This equipment has been tested and found to comply with the limits for a class B digital device, pursuant to Part 15 of the FCC Rules. These limits are designed to provide reasonable protection against harmful interference in a residential installation.

This equipment generates uses and can radiate radio frequency energy and, if not installed and used in accordance with the instructions, may cause harmful interference to radio communications. However, there is no guarantee that interference will not occur in a particular installation if this equipment does cause harmful interference to radio or television reception, which can be determined by turning the equipment off and on, the user is encouraged to try to correct the interference by one of the following measures:

- Reorient or relocate the receiving antenna.
- Increase the separation between the equipment and receiver.
- Connect the equipment into an outlet on a circuit different from that to which the receiver is connected.

To assure continued compliance, any changes or modifications not expressly approved by the party responsible for compliance could void the user's authority to operate this equipment. (Example-use only shielded interface cables when connecting to computer or peripheral devices).

This device complies with Part 15 of the FCC Rules. Operation is subject to the following two conditions:

- 1) This device may not cause harmful interference. And
- 2) This device must accept any interference received, including interference that may cause undesired operation.



This symbol on the product or in the instructions means that your electrical and electronic equipment should be disposed at the end its life separately from your household waste.

There are separate collection system for recycling in the EU.

For more information, please contact the local authority or your retailer where you purchased the product.

CAUTION:

RISK OF EXPLOSION IF BATTERY IS REPLACED BY INCORRECT TYPE. DISPOSE OF USED BATTERIES ACCORDING TO THE INSTRUCTION.

This product uses non-rechargeable alkaline batteries.