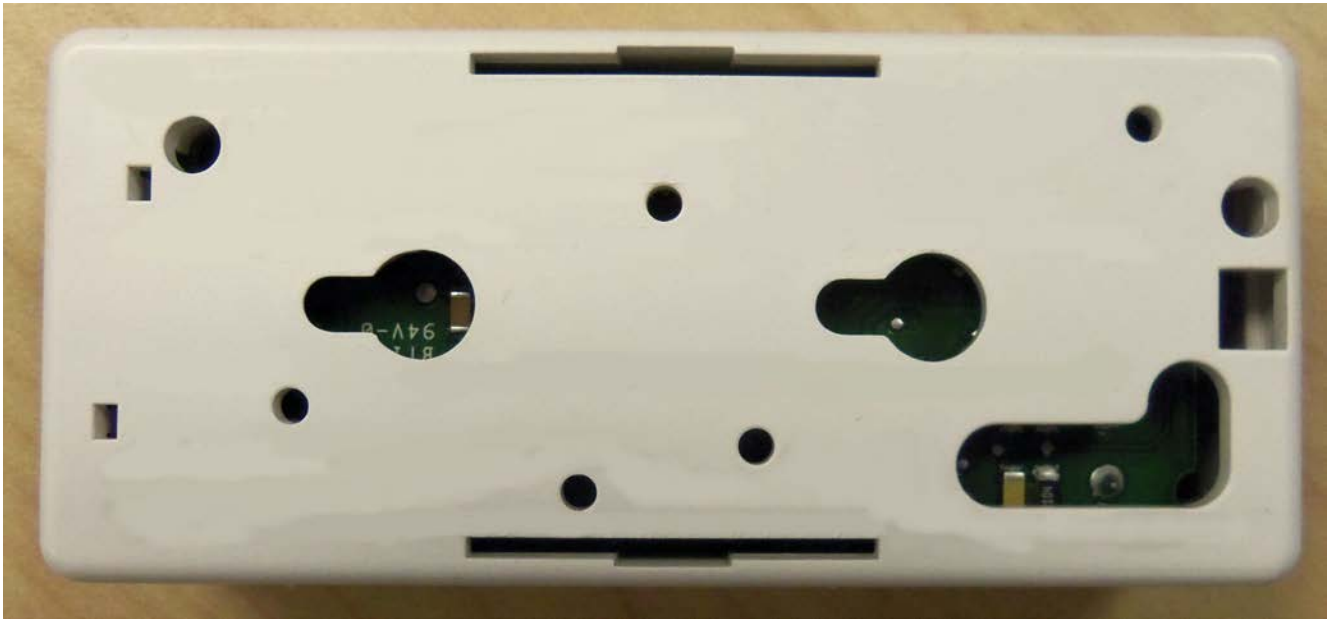


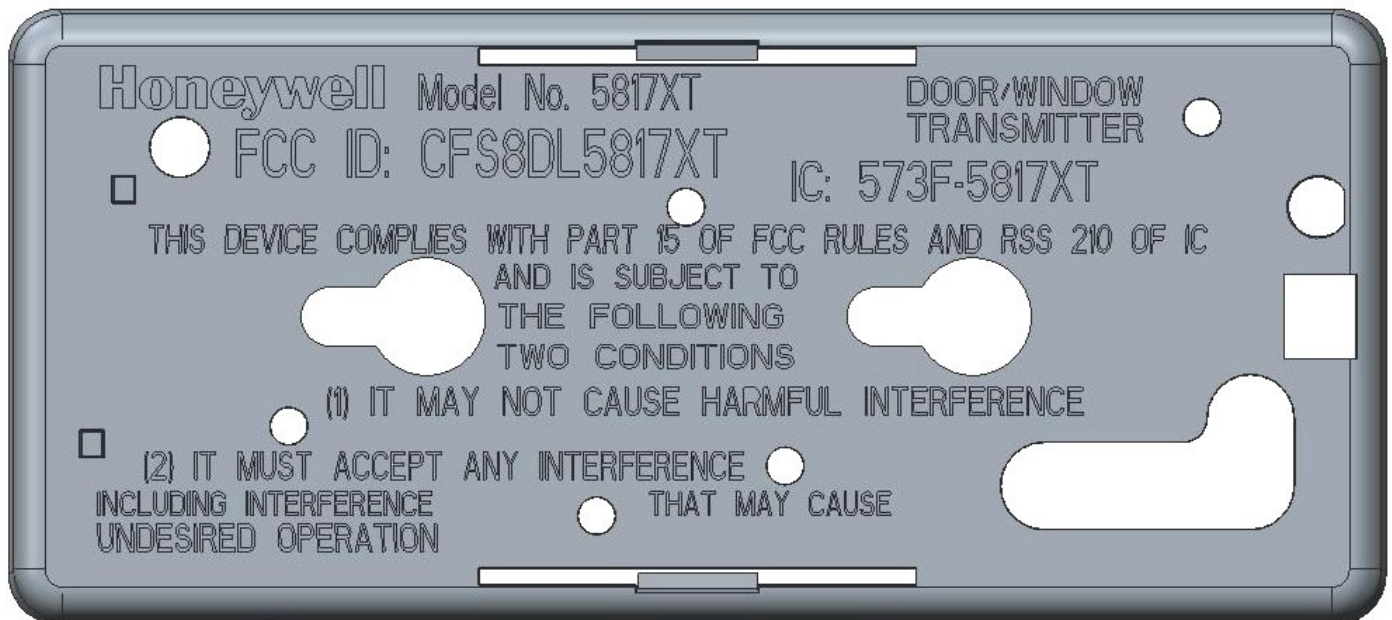
LABEL INFORMATION

EXACT LOCATION OF THE LABEL:

LABEL WITH FCC / IC INFORMATION WILL BE EMBOSSED IN THE PLASTIC CASE BACK:

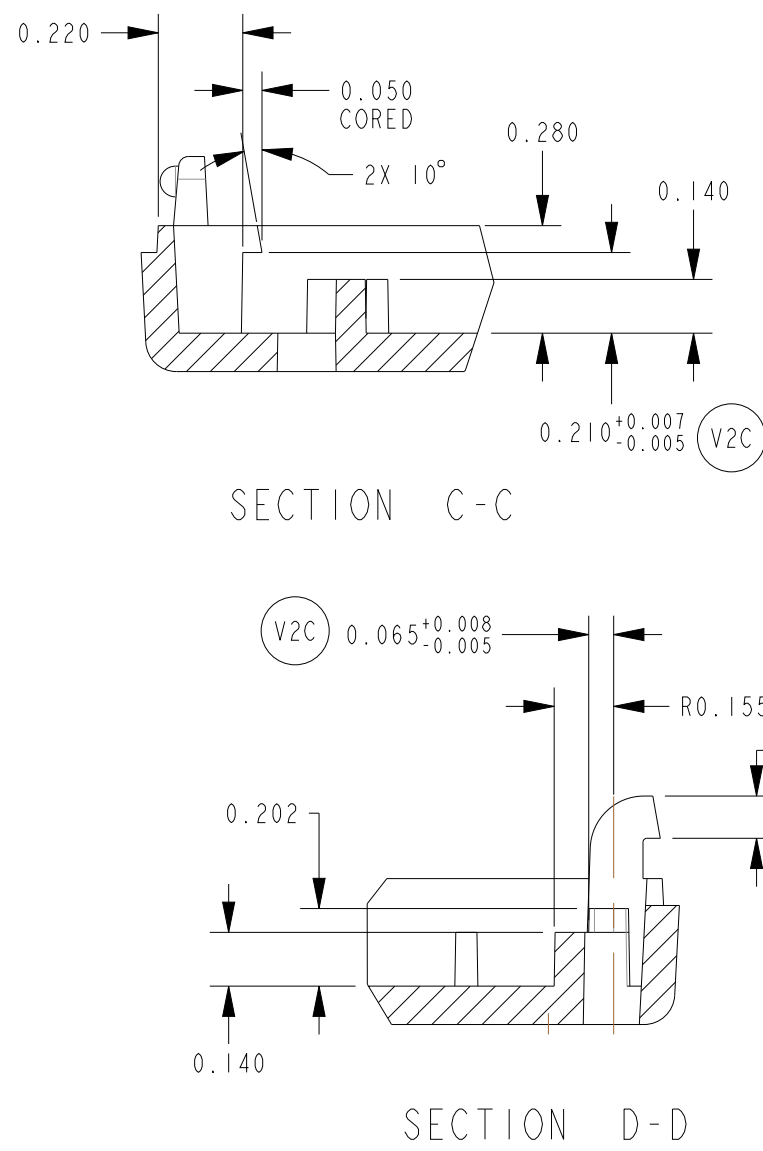
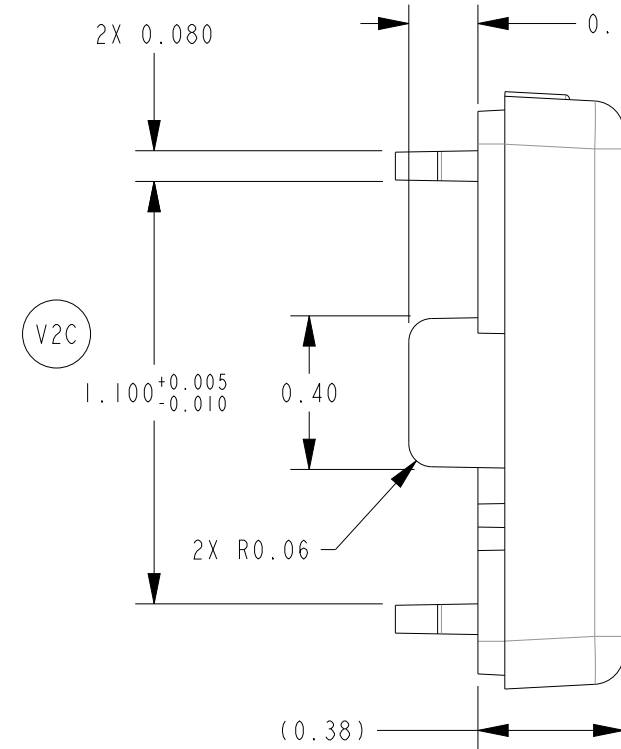
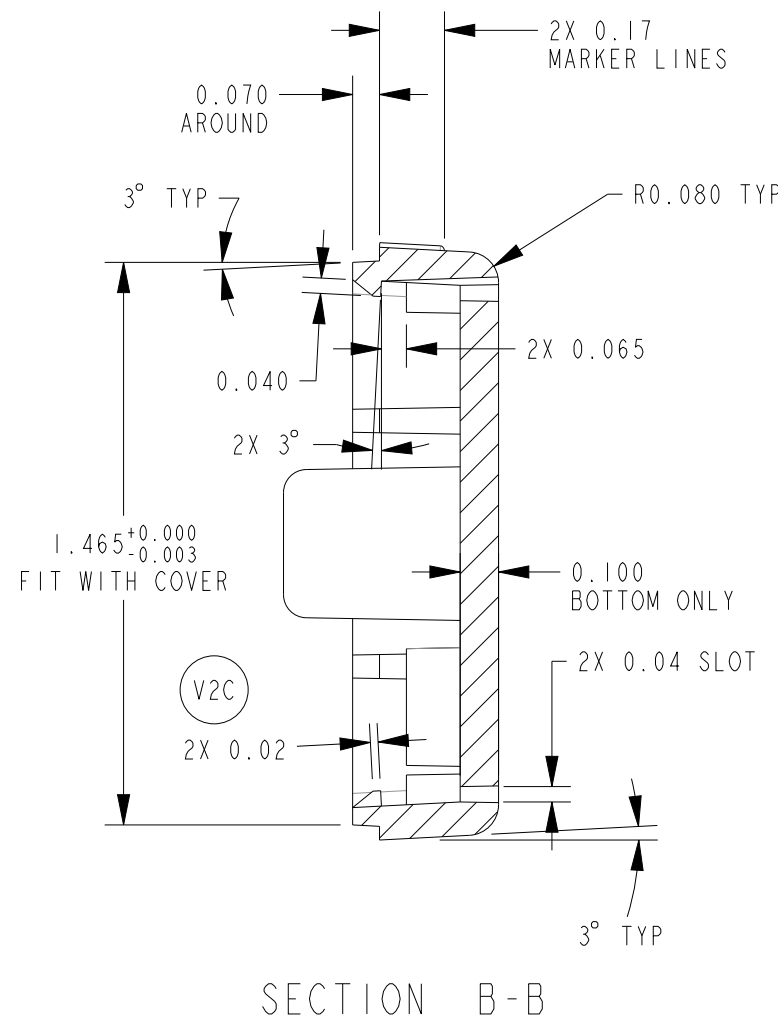


TEXT LOCATIONS FOR LABEL WILL BE LOCATED ACCORDING TO THIS PLASTIC MODEL DRAWING:

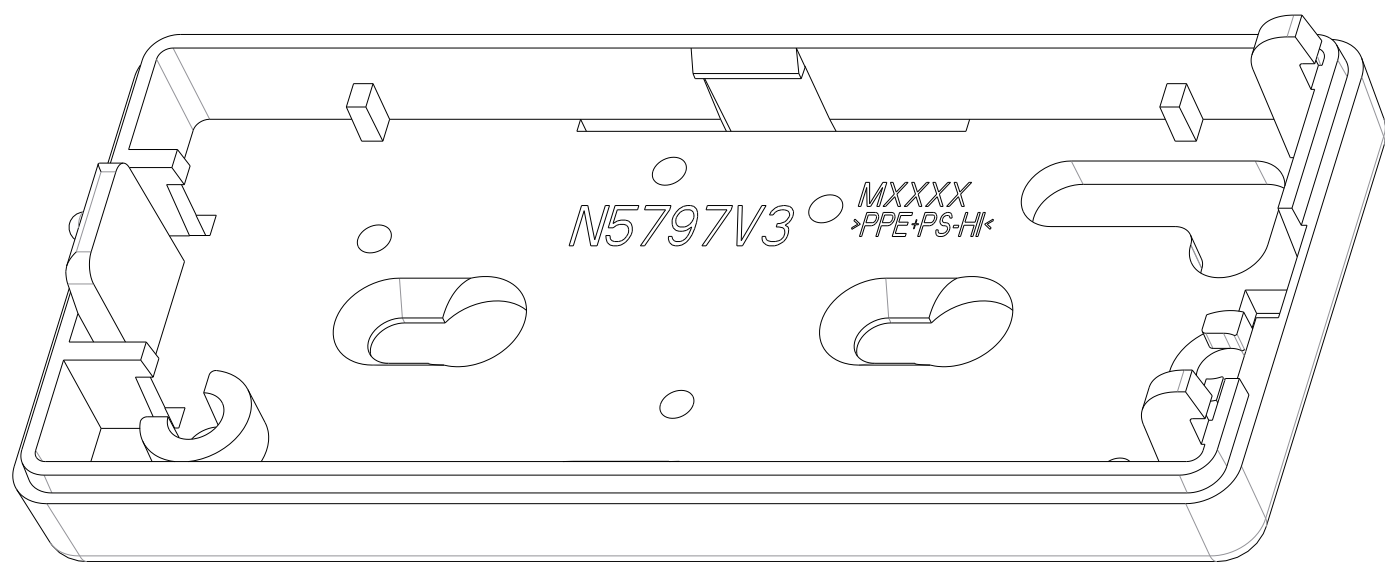
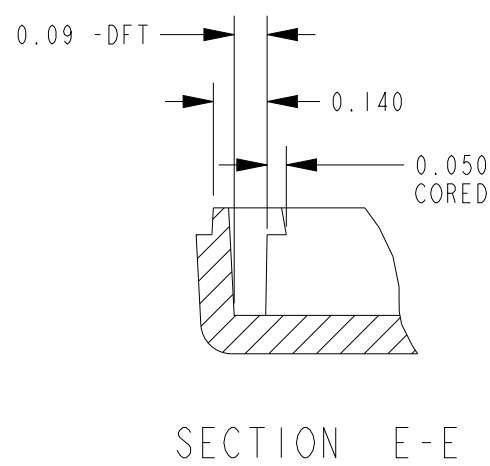


AN ENGINEER'S DRAWING OF THE CASE BACK WITH THE TEXT LOCATIONS AND DIMENSIONS IS ON THE NEXT PAGE:

CFS8DL5817XT / 573F-5817XT

1

- NOTES: UNLESS OTHERWISE STATED
1. MATERIAL: HSPRO00001731 PER 000-00296 LATEST REV. MATERIAL MAY CONSIST OF 10% BY VOLUME MAXIMUM REGIND OF THE SPECIFIED RESIN ONLY.
2. COLOR: HSPCH09A066 PER 000-00296. COLOR CLASSIFICATION 2 PER 000-00297 LATEST REV. PRE-COLORED PLASTIC RESIN FROM THE PLASTIC MANUFACTURER IS REQUIRED.
3. TEXT: ALL EXTERNAL SURFACES PER MOLD TECH 1055-2, REF (KOREAN STANDARD 3411), (CHINESE STANDARD YS1284)
4. 63 MICRO INCH OR BETTER FINISH ON ALL INTERNAL SURFACES MAXIMUM.
5. MOLD CLASS 3 OR BETTER PER 000-00292 LATEST REV. FOR MOLD CONSTRUCTION REQUIREMENTS.
6. WHERE PART SIZE ALLOWS, GENERIC PART NUMBER, MOLD NUMBER "MXXXX", CAVITY NUMBER (FOR MULTICAVITY TOOLS ONLY), RECYCLE LOGO, INTERCHANGEABLE MONTH/YEAR INDICATOR LOCATED AS SHOWN ON AN ADJUSTABLE REVISION WHEEL WHERE POSSIBLE. IF THE REVISION LETTER IS ALREADY IN THE TOOL REMOVE IT. THE PRIORITIZATION OF THE TEXT INDICATED ABOVE IS NOT CRITICAL.
7. ALL OTHER MOLDED IN TEXT AND LOGOS NOT PREVIOUSLY MENTIONED TO BE RECESSED 0.005".
8. PART WARPAGE SHALL NOT EXCEED 0.003" PER INCH.
9. DRAWING SHALL BE USED IN CONJUNCTION WITH THE PRO/ENGINEER 3-D MODEL OF THE APPROPRIATE REVISION. DIMENSIONS SHOWN ARE TO AID QC INSPECTION. GEOMETRY SHALL BE DERIVED FROM PRO/E FILE. UNDIMENSIONED FEATURES SHALL NOT DEVIATE FROM THE PRO/E FILE MORE THAN +/-0.005" UNLESS OTHERWISE SPECIFIED. DRAWING AND 3-D MODEL DIMENSIONS TO BE CHECKED BY THE APPROPRIATE HONEYWELL INSPECTION GROUP INDICATED ON THE PO FOR TOOL APPROVAL. FIRST SHOT SAMPLES MUST BE APPROVED IN BOTH PRIMARY AND SECONDARY RESINS. ALL BALLOONED "INSPECTION" DIMENSIONS TO BE CHECKED BY HONEYWELL INCOMING INSPECTION DEPARTMENT.
10. PART TO BE INSPECTED TO COSMETIC INSPECTION CLASSIFICATION 1 PER 000-00293 LATEST REV.
11. SEE 000-00295 LATEST REV. FOR ADDITIONAL STANDARD PART AND SHIPPING REQUIREMENTS.
12. GRAPHICS TO BE RESISTANT TO WEAR SUCH THAT RUBBING WITH A PLASTIC ERASER UNDER A 500g LOAD FOR 1500 CYCLES WILL NOT RENDER THE GRAPHICS ILLEGIBLE.
13. PART VOLUME 0.69 CU IN, PART WIEGHT 0.72 OZ.



Honeywell		2 CORPORATE CENTER DR MELVILLE, NY 11747		SHEET 1 OF 1	
TOLERANCES (UNLESS OTHERWISE SPECIFIED):		DRAWN BY GGS		DIMENSIONS ARE IN INCHES	
FRACTIONAL XX±.001 IN. XX±.010 XXX±.005		CHECKED BY M.D.		TITLE <i>CASE BACK, 5817</i>	
ANGULAR X±.000 IN. XX±.X XXX±.X		APPROVED BY		COMPUTER FILE NAME <i>N5797V3</i>	
T.O. & OVER XX±.X XXX±.X		EPL MFG DATE 3-20-91		DRAWING NUMBER <i>N5797V3-XX</i>	
SCALE 2:1					