

Bluetooth USB Adapter

Quick Installation Guide

Product Introduction

The Bluetooth USB Dongle allows a computer with a USB port to communicate with other Bluetooth-enabled devices. When used with the Bluetooth application software, it can perform wireless network applications such as information exchange, file transfer, network access, dial-up networking, headset, audio gateway, printer application, and so on.

Package Contents

- Installation CD ROM
- Bluetooth USB dongle
- Quick Installation Guide

System Requirements

- IBM compatible PC with Pentium, Celeron processor or equivalent CPU or higher.
- RAM 64M or above
- Screen: 800*600 or above
- Display: adapter True Color 16bits or above.
- Microsoft Windows 98SE/ME/2000/XP/x64 Edition

Installation Steps

Step 1:

Uninstall previous version of Widcomm Bluetooth software.

Step 2:

Plugged Bluetooth USB dongle in your PC. Insert the Installation software CD into the CD-ROM of your machine, an auto-install program will start to guide you to complete



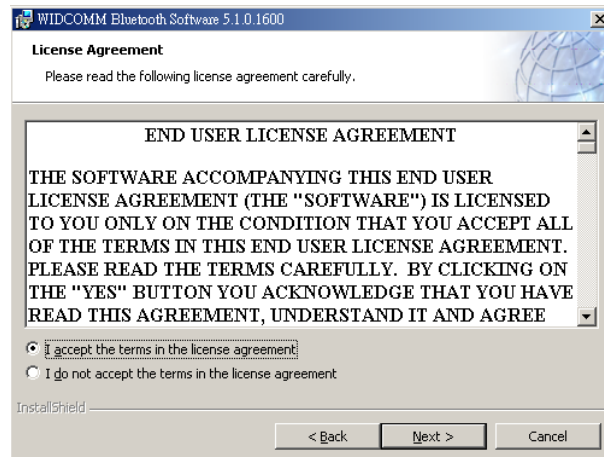
the installation step by step. You also can find Setup.exe

from the given Widcomm Drive CD, double click on it the installshield wizard dialog box will open. Click Next.

Step 3:

Accept the software license agreement.

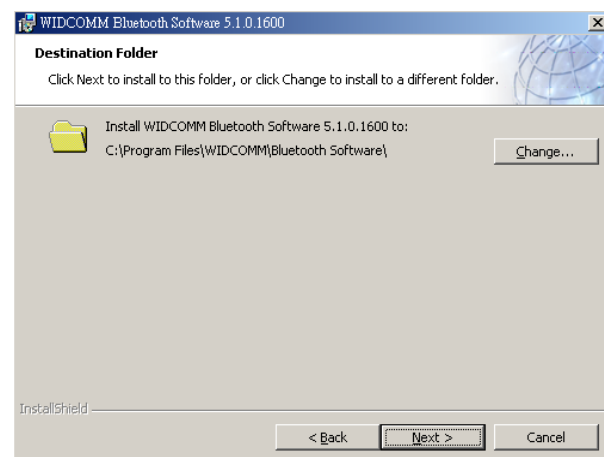
Click Next.



Step 4:

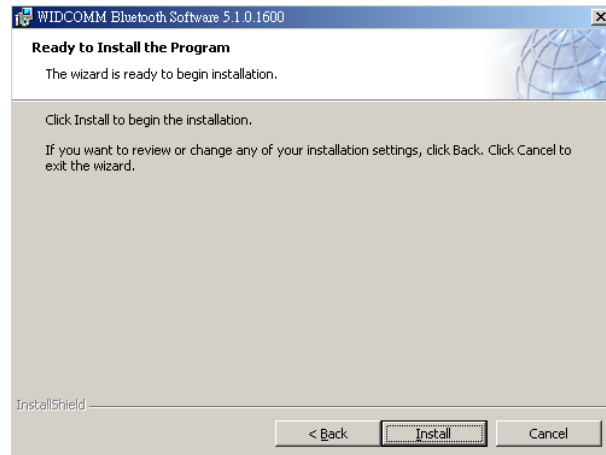
Select destination folder, you can choose

The default or change to your favorite.




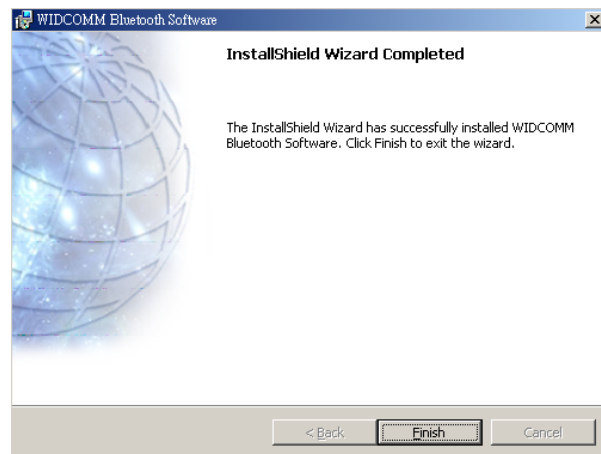
Step 5:

Click Install to start the installation
and
Files coping in processing...



Step 6:

Installation is complete.
My Bluetooth place  should
appear on your desktop and a
similar icon also appears on the
lower right corner of your screen.



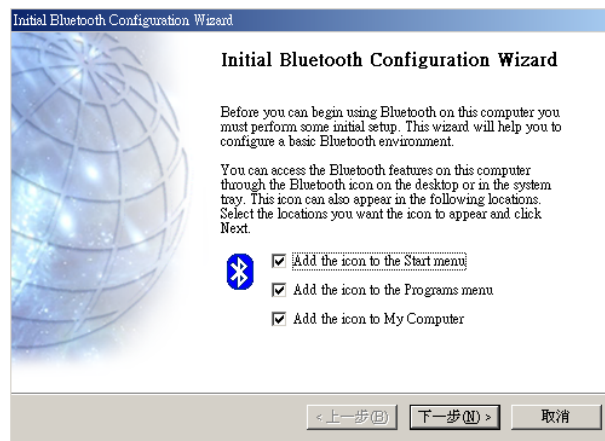
Select Bluetooth Service

When the first time Widcomm driver is installed, and Bluetooth USB dongle is plugged to your system, you can configure your Bluetooth services for your system.

Step 1:

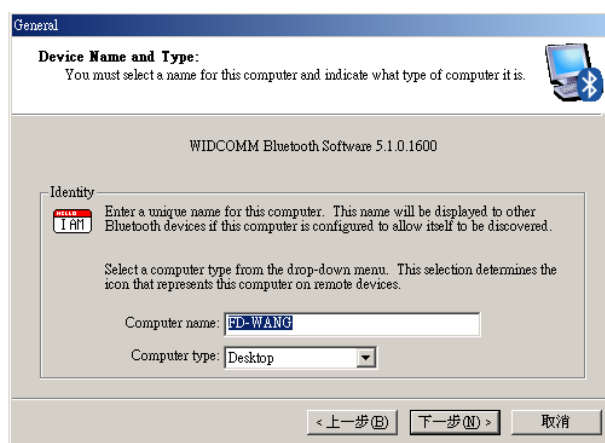


Double-click on the Bluetooth icon on the lower-right corner of the screen, you will see configuration wizard. Click Next bottom.



Step 2:

Assign computer name and specify Computer type, then click Next button. These can be defined by customer.



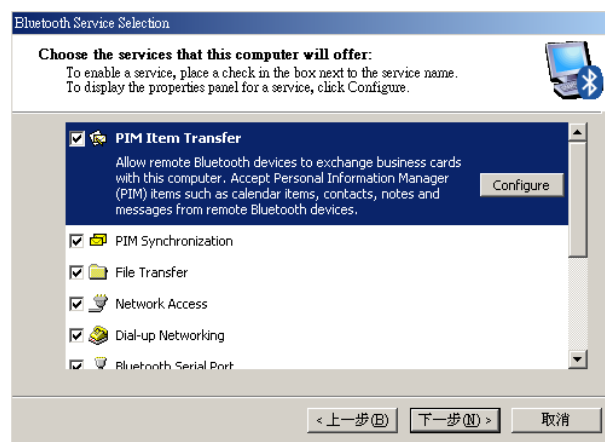
Step 3:

Click Next bottom to configure bluetooth services.



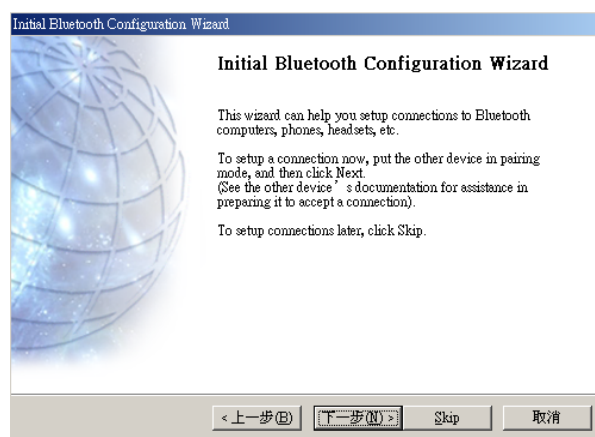
Step 4:

The default setting is that all services are available, you can check or uncheck one or more services, then click Next bottom.



Step 5:

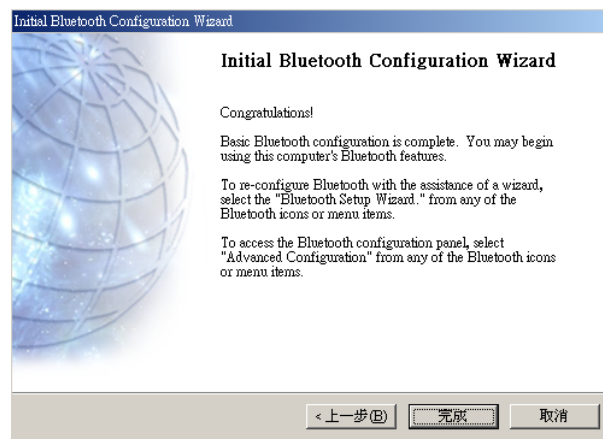
Click Skip.



Step 6:

Configuration is completed.

Click Finish.



FCC Statement

This device complies with Part 15 of the FCC Rules. Operation is subject to the following two conditions:

- (1) This device may not cause harmful interference.
- (2) This device must accept any interference received, including interference that may cause undesired operation.

15.105 Federal Communications Commission (FCC) Requirements, Part 15

This equipment has been tested and found to comply with the limits for a class B digital device, pursuant to part 15 of the FCC Rules. These limits are designed to provide reasonable protection against harmful interference in a residential installation.

This equipment generates, uses and can radiate radio frequency energy and, if not installed and used in accordance with the instructions, may cause harmful interference to radio communications. However, there is no guarantee that interference will not occur in a particular installation. If this equipment does cause harmful interference to radio or television reception, which can be determined by turning the equipment off and on, the user is encouraged to try to correct the interference by one or more of the following measures:

- Reorient or relocate the receiving antenna.**
- Increase the separation between the equipment and receiver.**
- Connect the equipment into an outlet on a circuit different from that to which the receiver is connected.**
- Consult the dealer or an experienced radio/TV technician for help.**

Any changes or modifications (including the antennas) made to this device that are not expressly approved by the manufacturer may void the user's authority to operate the equipment.

FCC RF Radiation Exposure Statement: This equipment complies with FCC RF radiation exposure limits set forth for an uncontrolled environment.

DELTA
Bluetooth USB Adapter
Model: DFBD-B4321
FCC ID: H79DFBD-B4321



Made in Taiwan

DELTA
Bluetooth USB Adapter
Model: CN-514
FCC ID: H79DFBD-B4321



Made in Taiwan