

## EDIFIER STAX SPIRIT S10

True Wireless Planar Magnetic Earbuds with Active Noise Cancellation

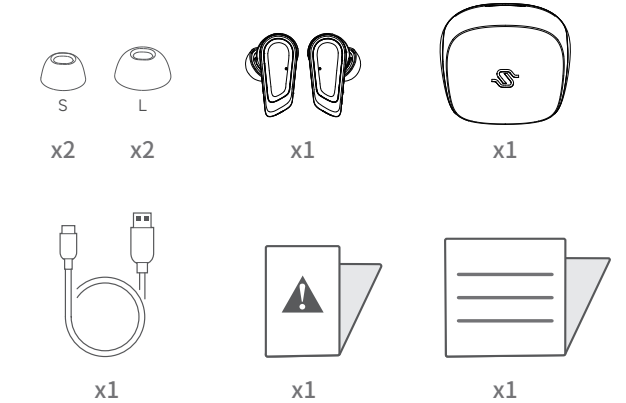
Manual

BC



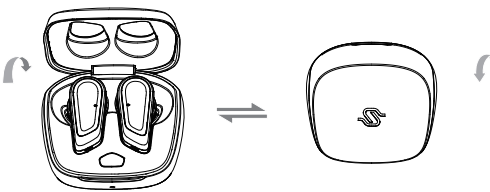
### WHAT'S IN THE BOX

1



### POWER ON/OFF

3



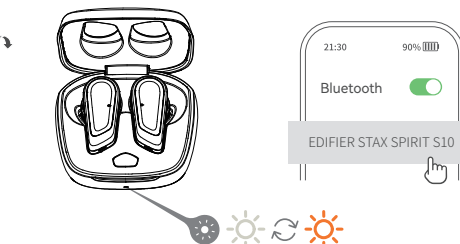
Open or close the case to power on/off.

打開或關閉充電盒，耳機自動開機或關機。



### FIRST PAIRING

4



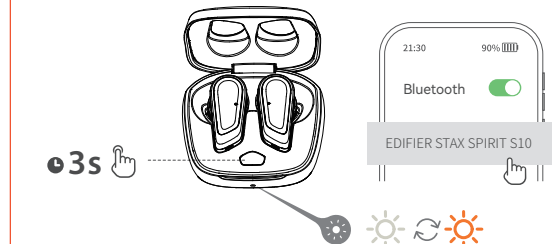
Power on and then select "EDIFIER STAX SPIRIT S10" in your device setting to connect.

開機後在設備設置中選擇 "EDIFIER STAX SPIRIT S10" 去連接。



### PAIRING FOR NEW DEVICE

5



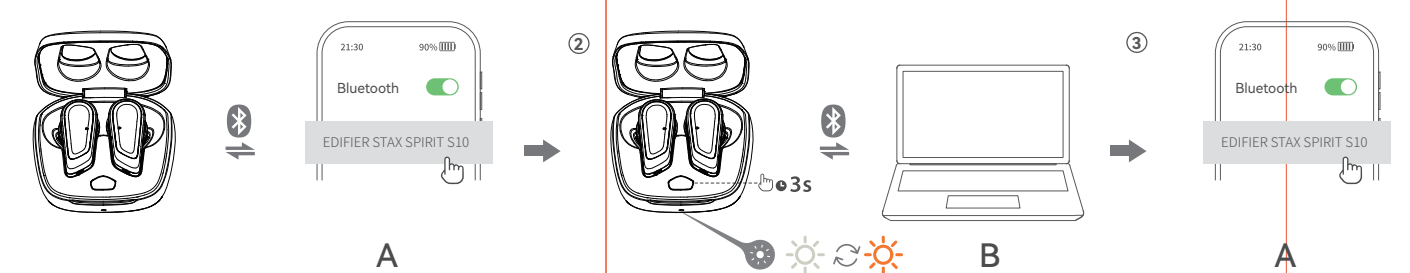
1. In ON state, press and hold the button on the case for about 3s.  
2. Select "EDIFIER STAX SPIRIT S10" in your device setting to connect.  
Note: For subsequent use, the earbuds will automatically connect to the device used last time.

1. 在開機狀態下長按多功能按鍵約3s。  
2. 在設備設置中選擇 "EDIFIER STAX SPIRIT S10" 去連接。  
注意：再次開機，耳機可自動回連最後一次連接過的設備。



### DUAL-DEVICE CONNECTION

6



1. Pair device A with the earbuds and don't take the earbuds out.  
2. Re-enter Bluetooth pairing and select "EDIFIER STAX SPIRIT S10" in device B setting to connect.  
3. Select "EDIFIER STAX SPIRIT S10" in device A setting to connect manually.

1. 耳機先與A設備連接且不要取出耳機。  
2. 重新進入藍牙配對模式並在B設備設置裏選擇 "EDIFIER W260NC" 去連接。  
3. 在A設備手動點擊 "EDIFIER STAX SPIRIT S10" 連接。

For more information, please visit our website:

www.edifier.com

Edifier International Limited  
P.O. Box 6264  
General Post Office  
Hong Kong

www.edifier.com  
©2024 Edifier International Limited. All rights reserved.  
Printed in China

NOTICE:  
For the need of technical improvement and system upgrade,  
information contained herein may be subject to change from time to  
time without prior notice.

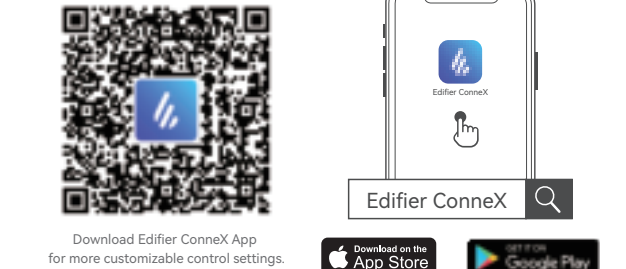
Products of EDIFIER will be customized for different applications.  
Pictures and illustrations shown on this manual may be slightly  
different from actual product.  
If any difference is found, the actual product prevails.

Model: EDF200137



### APP

2

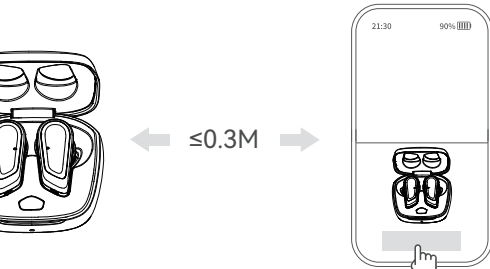


Download Edifier Connect App  
for more customizable control settings.



### GOOGLE FAST PAIR

7



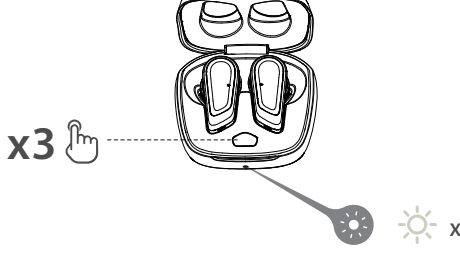
Enter Bluetooth pairing mode with the Android device,  
then confirm the pop-up window to connect.

進入與Android設備的藍牙配對模式，然後確認彈出窗口進行連接。



### RESET

8



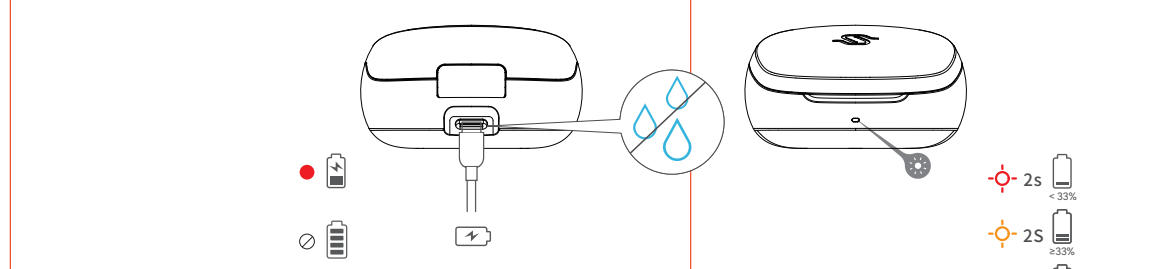
1. Place the earbuds in the case and keep it open.  
2. Press the button on the case 3 times to finish factory reset.

1. 耳機置於充電盒並保持開蓋。  
2. 按3次按鍵去完成出廠設置。



### CHARGING

9



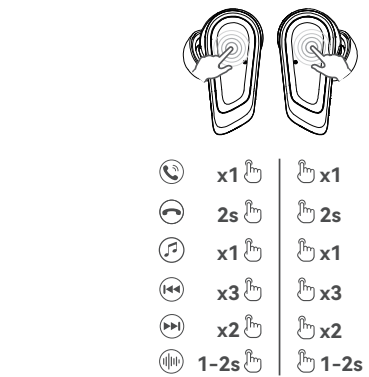
Input: 5V=200mA(Earbuds) 5V=1A(Charging case)  
Note: Please do not charge the earbuds when there is sweat or other liquids inside the charging port, which may damage the earbuds.

輸入：5V=200mA（耳機） 5V=1A（充電盒）  
注意：請勿在充電口有汗液或其他液體時對耳機進行充電，有可能對耳機元器件造成損壞！



### CONTROLS

10



Note:  
1. Default sound control: High noise cancellation / Ambient sound / Noise cancellation off.  
2. Images are for illustrative purposes only and may differ from the actual product.

1. 默認聲音模式：深度降噪/環境聲/降噪關  
2. 本說明書中的圖片均為示意圖，可能與實物有偏差。

NCC聲明：  
取得審驗證明之低功率射頻器材，非經核准，公司、商號或使用者均不得擅自變更  
頻率、加大功率或變更原設計之特性及功能。低功率射頻器材之使用不得影響  
飛航安全及干擾合法通信；經發現有干擾現象時，應立即停用，並改善至無干擾  
時方得繼續使用。前述合法通信，指依電信管理法規定作業之無線電通信。低功  
率射頻器材須忍受合法通信或工業、科學及醫療用電波輻射性電機設備之干擾。

### 產品中有害物質的名稱及含量

設備名稱 Equipment name: 真無線平板降噪耳機	型號 (型式) Type designation (Type): EDF200137	限制物質及其化學符號 Restricted substances and its chemical symbols					
		鉛 Lead (Pb)	汞 Mercury (Hg)	鎘 Cadmium (Cd)	六價鉻 Hexavalent chromium (Cr <sup>6+</sup> )	多溴聯苯 Polybrominated biphenyls (PBBs)	多溴二苯醚 Polybrominated diphenyl ethers (PBDEs)
金屬部件	超出0.1wt %	○	○	○	○	○	○
塑膠部件	○	○	○	○	○	○	○
電線電纜	超出0.1wt %	○	○	○	○	○	○
電路板組件	超出0.1wt %	○	○	○	○	○	○
電鍍件	○	○	○	○	○	○	○
電池	超出0.1wt %	○	○	○	○	○	○

備註1: "超出0.1 wt %" 及 "超出0.01 wt %" 係指限制物質之百分比含量超出百分比含量基準值。  
Note 1: "Exceeding 0.1 wt %" and "exceeding 0.01 wt %" indicate that the percentage content of the  
restricted substance exceeds the reference percentage value of presence condition.  
備註2: "○"係指該項限制物質之百分比含量未超出百分比含量基準值。  
Note 2: "○" indicates that the percentage content of the restricted substance does not exceed the  
percentage of reference value of presence.  
備註3: "—"係指該項限制物質為排除項目。  
Note 3: The "-" indicates that the restricted substance corresponds to the exemption.

FCC statement:  
This device complies with Part 15 of the FCC Rules. Operation is subject  
to the following two conditions:  
(1) this device may not cause harmful interference, and (2) this device  
must accept any interference received, including interference that may  
cause undesired operation.  
IC statement: CAN ICES-003(B) / NMB-003(B).

FCC ID: Z9G-EDF230  
IC: 10004A-EDF230

XXX-XXXXXX

Declaration for EU  
Frequency Band: 2400MHz ~ 2483.5MHz  
RF Power Output: ≤XX dBm (EIRP)  
There is no restriction of use.

Hereby, Edifier International Limited declares that the radio equipment type  
EDF200137 is in compliance with Directive 2014/53/EU. The full text of the  
EU declaration of conformity is available at the following internet address:  
https://www.edifier.com/int/eu-doc.html

Input: 5V=200mA(Earbuds)  
5V=1A(Charging case)