

EXHIBIT 9**Internal Photographs**

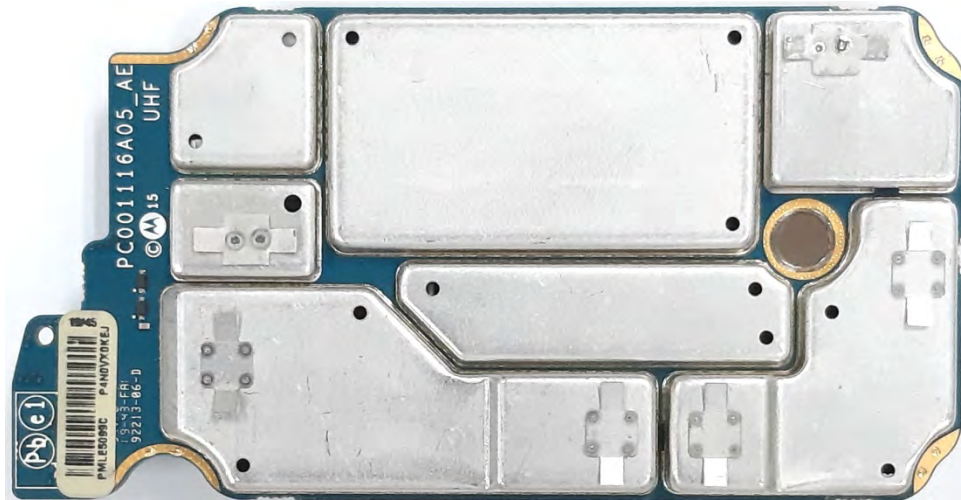
(Pursuant to FCC Part 2.1033(b)(7), 2.1033(c)(12) and RSP 100 Annex C)

The following photographs are attached.

Exhibit

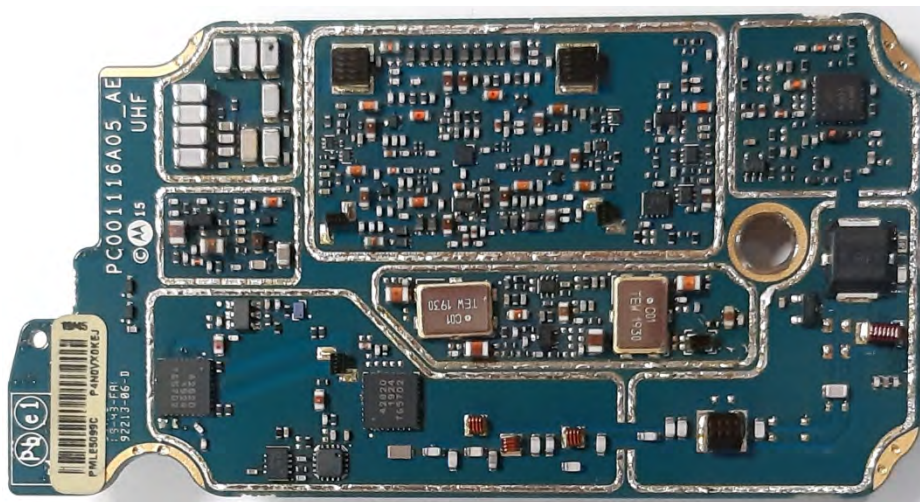
1. RF board <u>with</u> Shields (Top) (APX6000/APX5000/APX6000XE/APX6000Li/SRX2200)	9A
2. RF board <u>without</u> Shields (Top) (APX6000/APX5000/APX6000XE/APX6000Li/SRX2200)	9B
3. RF board <u>with</u> Shields (Bottom) (APX6000/APX5000/APX6000XE/APX6000Li/SRX2200)	9C
4. RF board <u>without</u> Shields (Bottom) (APX6000/APX5000/APX6000XE/APX6000Li/SRX2200)	9D
5. Expansion board <u>with</u> shields (Top) (APX6000/APX5000/APX6000XE/APX6000Li/SRX2200)	9E
6. Expansion board <u>without</u> shields (Top) (APX6000/APX5000/APX6000XE/APX6000Li/SRX2200)	9F
7. Expansion board <u>with</u> shields (Bottom) (APX6000/APX5000/APX6000XE/APX6000Li/SRX2200)	9G
8. Expansion board <u>without</u> shields (Bottom) (APX6000/APX5000/APX6000XE/APX6000Li/SRX2200)	9H
9. Vocon board <u>with</u> shields (Top) (APX6000/APX5000/APX6000XE/APX6000Li/SRX2200)	9I
10. Vocon board <u>without</u> shields (Top) (APX6000/APX5000/APX6000XE/APX6000Li/SRX2200)	9J
11. Vocon board <u>with</u> shields (Bottom) (APX6000/APX5000/APX6000XE/APX6000Li/SRX2200)	9K
12. Vocon board <u>without</u> shields (Bottom) (APX6000/APX5000/APX6000XE/APX6000Li/SRX2200)	9L
13. RF and Vocon boards <u>with</u> chassis and housing (APX6000/APX6000Li/APX5000 Model 1.5) (Front side)	9M
14. Expansion board <u>with</u> chassis and housing (APX6000/APX6000Li/APX5000 Model 1.5) (Back side)	9N
15. RF and Vocon boards <u>with</u> chassis and housing (APX6000/APX6000Li/APX5000 Model 2.5) (Front side)	9O
16. Expansion board <u>with</u> chassis and housing (APX6000/APX6000Li/APX5000 Model 2.5) (Back side)	9P
17. RF and Vocon boards <u>with</u> chassis and housing (APX6000/ APX6000Li /APX5000 Model 3.5) (Front side)	9Q
18. Expansion board <u>with</u> chassis and housing (APX6000/ APX6000Li /APX5000 Model 3.5) (Back side)	9R
19. RF and Vocon boards <u>with</u> chassis and housing of SRX2200 Model 1.5 (Front side)	9S
20. Expansion board <u>with</u> chassis and housing of SRX2200 Model 1.5 (Back side)	9T
21. RF and Vocon boards <u>with</u> chassis and housing of SRX2200 Model 3.5 (Front side)	9U
22. Expansion board <u>with</u> chassis and housing of SRX2200 Model 3.5 (Back side)	9V
23. RF and Vocon boards <u>with</u> chassis and housing of APX6000XE Model 1.5 (Front side)	9W
24. Expansion board <u>with</u> chassis and housing of APX6000XE Model 1.5 (Back side)	9X
25. RF and Vocon boards <u>with</u> chassis and housing of APX6000XE Model 2.5 (Front side)	9Y
26. Expansion board <u>with</u> chassis and housing of APX6000XE Model 2.5 (Back side)	9Z
27. RF and Vocon boards <u>with</u> chassis and housing of APX6000XE Model 3.5 (Front side)	9AA
28. Expansion board <u>with</u> chassis and housing of APX6000XE Model 3.5 (Back side)	9AB
29. Exploded view of APX6000/APX6000Li/APX5000/SRX2200 Model 1.5	9AC
30. Exploded view of APX6000/APX6000Li/APX5000 Model 2.5	9AD
31. Exploded view of APX6000/APX6000Li/APX5000/SRX2200 Model 3.5	9AE
32. Exploded view of APX6000XE Model 1.5	9AF
33. Exploded view of APX6000XE Model 2.5	9AG
34. Exploded view of APX6000XE Model 3.5	9AH

Exhibits 9A



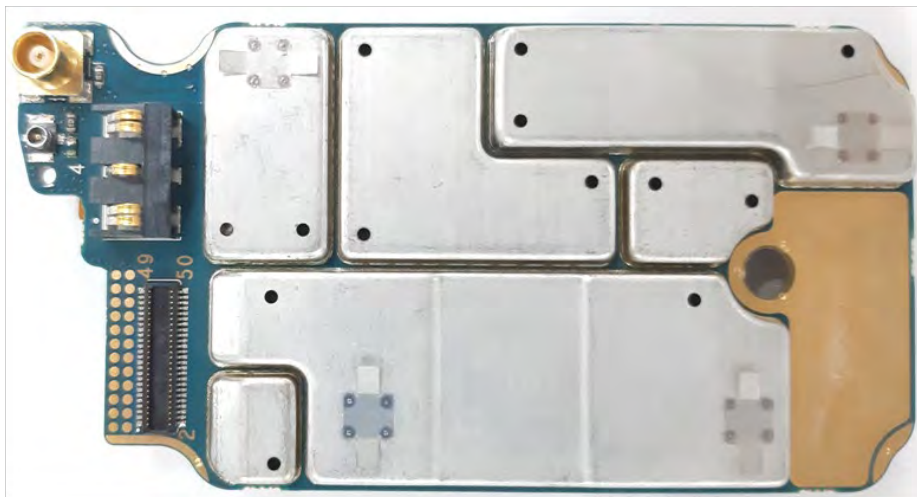
RF board with Shields (Top)
(APX6000/APX5000/APX6000XE/APX6000Li/SRX2200)

Exhibit 9B



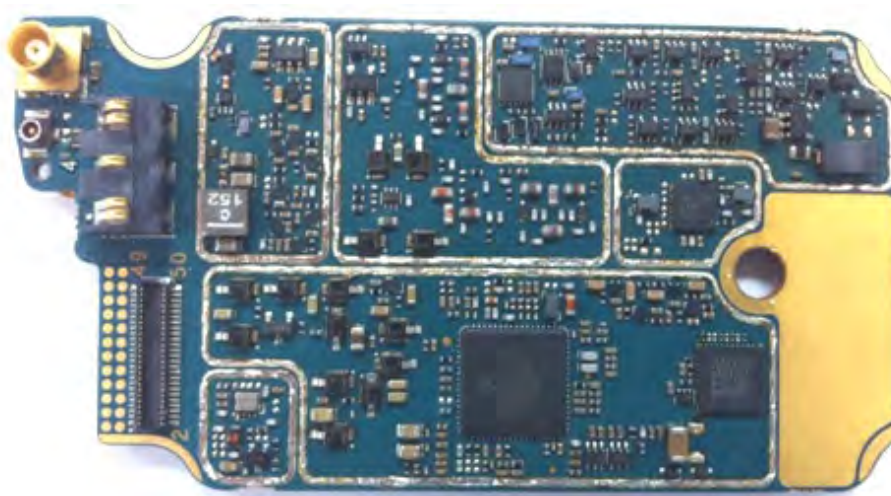
RF board without Shields (Top)
(APX6000/APX5000/APX6000XE/APX6000Li/SRX2200)

Exhibit 9C



RF board with Shields (Bottom)
(APX6000/APX5000/APX6000XE/APX6000Li/SRX2200)

Exhibit 9D



RF board without Shields (Bottom)
(APX6000/APX5000/APX6000XE/APX6000Li/SRX2200)

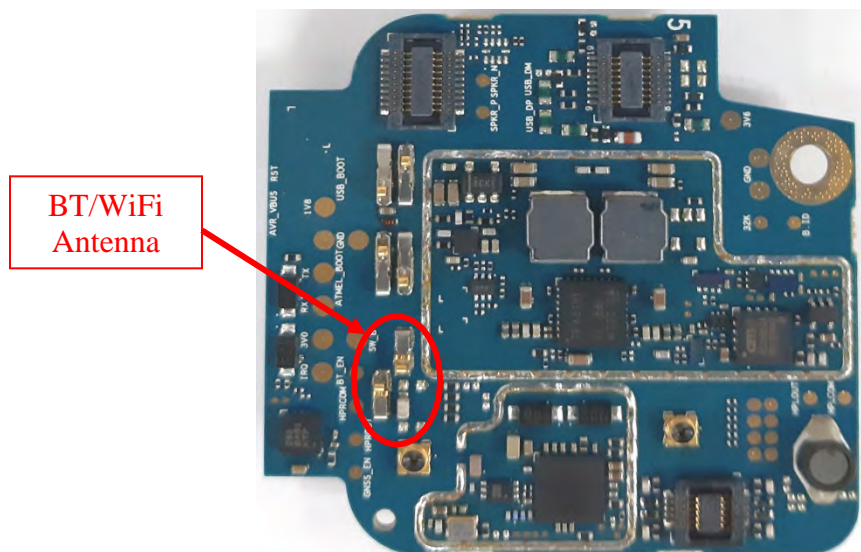
Exhibit 9F

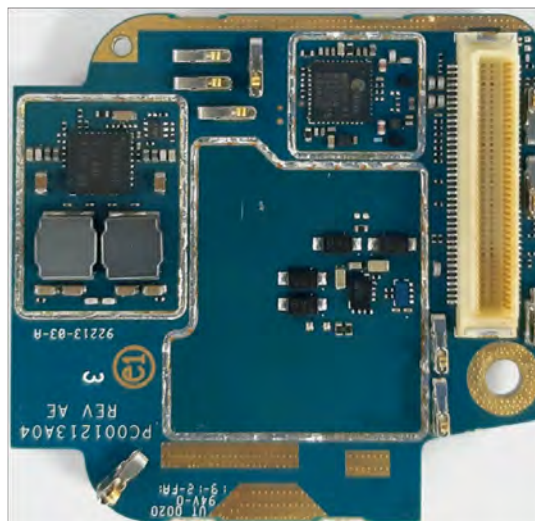
EXHIBIT 9
SHEET 4 OF 29

Exhibit 9G



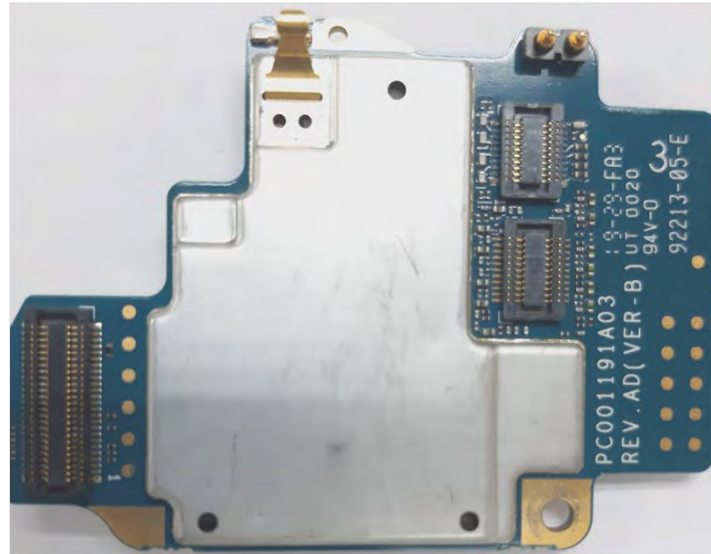
Expansion board with shields (Bottom)
(APX6000/APX5000/APX6000XE/APX6000Li/SRX2200)

Exhibit 9H



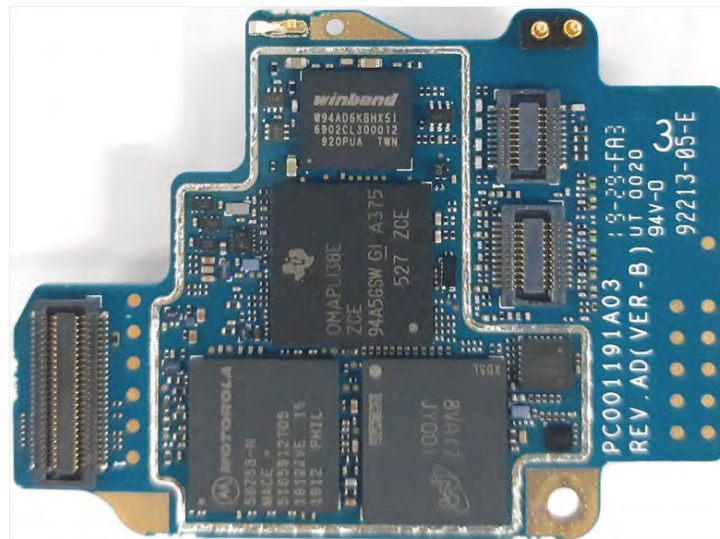
Expansion board without shields (Bottom)
(APX6000/APX5000/APX6000XE/APX6000Li/SRX2200)

Exhibit 9I



Vocon board with shields (Top)
(APX6000/APX5000/APX6000XE/APX6000Li/SRX2200)

Exhibit 9J



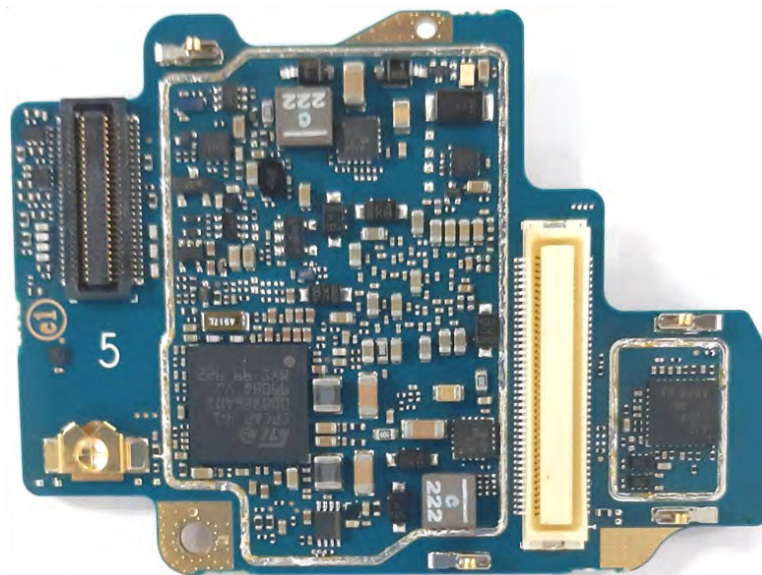
Vocon board without shields (Top)
(APX6000/APX5000/APX6000XE/APX6000Li/SRX2200)

Exhibit 9K



Vocon board with shields (Bottom)
(APX6000/APX5000/APX6000XE/APX6000Li/SRX2200)

Exhibit 9L



Vocon board without shields (Bottom)
(APX6000/APX5000/APX6000XE/APX6000Li/SRX2200)

Exhibit 9M



RF and Vocon boards with chassis and housing of APX6000/APX6000Li/APX5000 Model 1.5 (Front side)

Exhibit 9N



Expansion board with chassis and housing of APX6000/APX6000Li/APX5000 Model 1.5 (Back side)

Exhibit 90



RF and Vocon boards with chassis and housing of APX6000/APX6000Li/APX5000 Model 2.5 (Front side)

Exhibit 9P



Expansion board with chassis and housing of APX6000/APX6000Li/APX5000 Model 2.5 (Back side)

Exhibit 9Q



RF and Vocon boards with chassis and housing of APX6000/APX6000Li/APX5000 Model 3.5 (Front side)

Exhibit 9R



Expansion board with chassis and housing of APX6000/APX6000Li/APX5000 Model 3.5 (Back side)

Exhibit 9S



RF and Vocon boards with chassis and housing of SRX2200 Model 1.5 (Front side)

Exhibit 9T



Expansion board with chassis and housing of SRX2200 Model 1.5 (Back side)

Exhibit 9U



RF and Vocon boards with chassis and housing of SRX2200 Model 3.5 (Front side)

Exhibit 9V



Expansion board with chassis and housing of SRX2200 Model 3.5 (Back side)

Exhibit 9W



RF and Vocon boards with chassis and housing of APX6000XE Model 1.5 (Front side)

Exhibit 9X



Expansion board with chassis and housing of APX6000XE Model 1.5 (Back side)

Exhibit 9Y



RF and Vocon boards with chassis and housing of APX6000XE Model 2.5 (Front side)

Exhibit 9Z



Expansion board with chassis and housing of APX6000XE Model 2.5 (Back side)

Exhibit 9AA



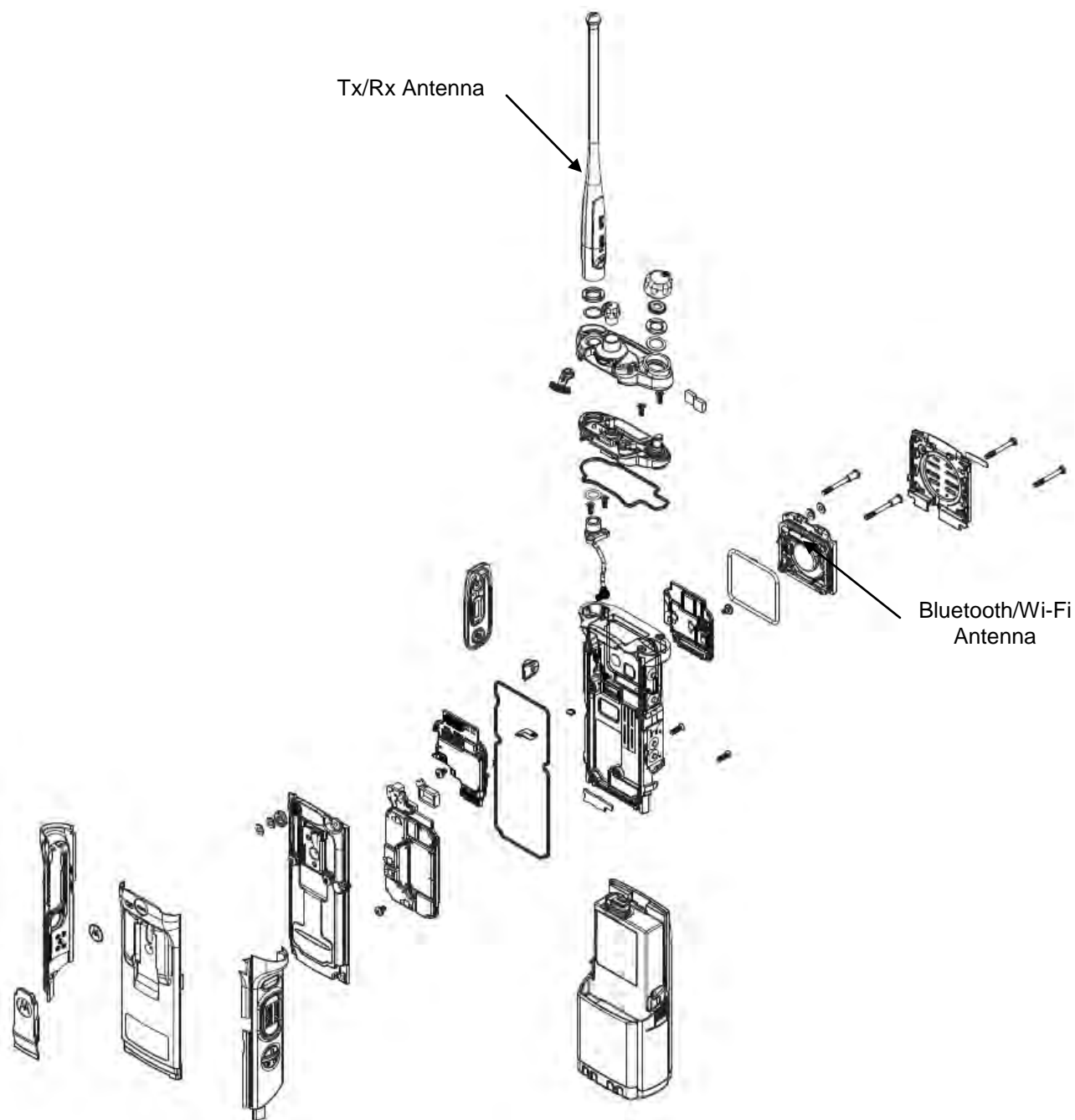
RF and Vocon boards with chassis and housing of APX6000XE Model 3.5 (Front side)

Exhibit 9AB



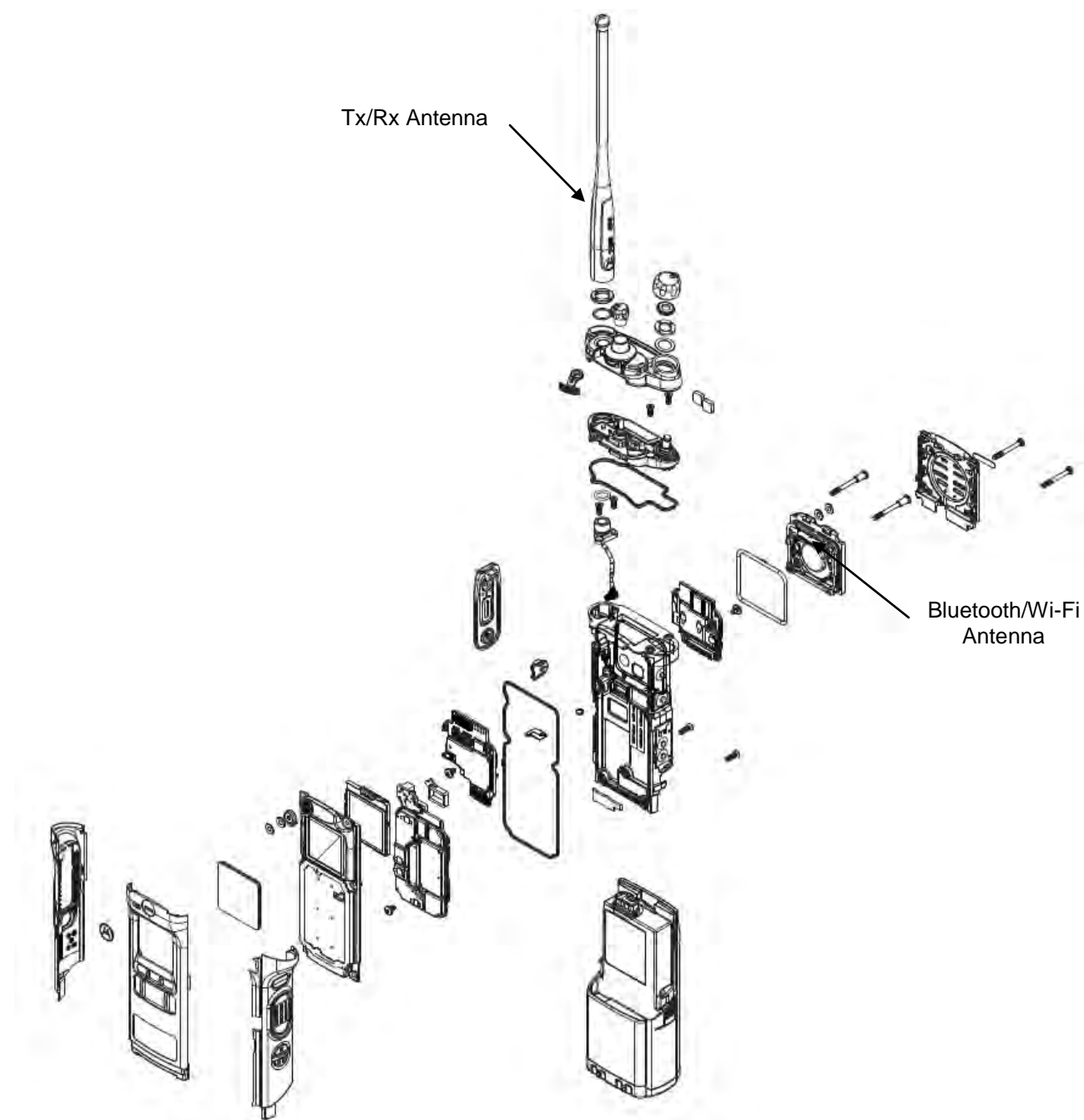
Expansion board with chassis and housing of APX6000XE Model 3.5 (Back side)

Exhibit 9AC



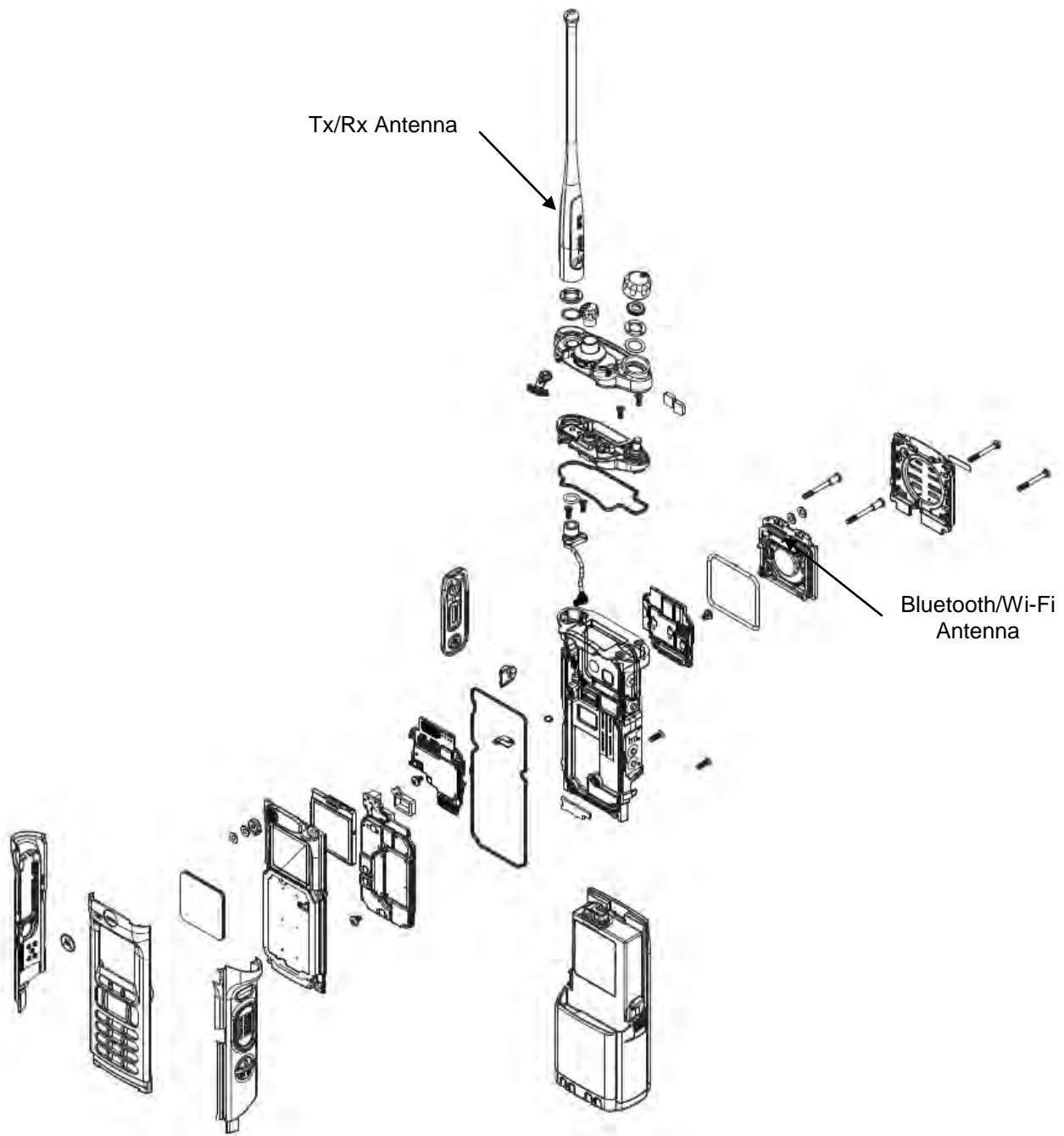
Exploded view of APX6000/APX6000Li/APX5000/SRX2200 Model 1.5

Exhibit 9AD



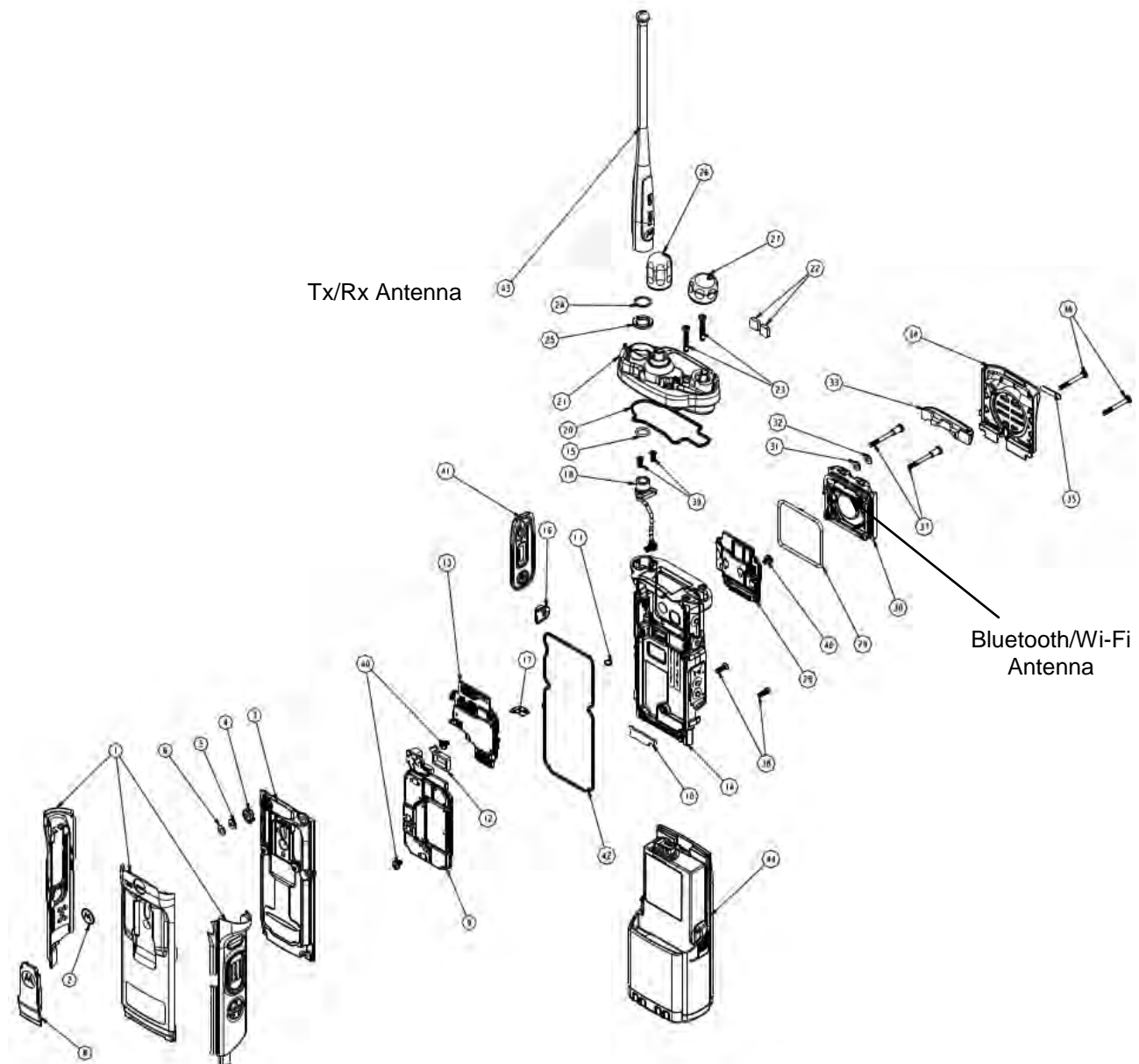
Exploded view of APX6000/APX6000Li/APX5000 Model 2.5

Exhibit 9AE



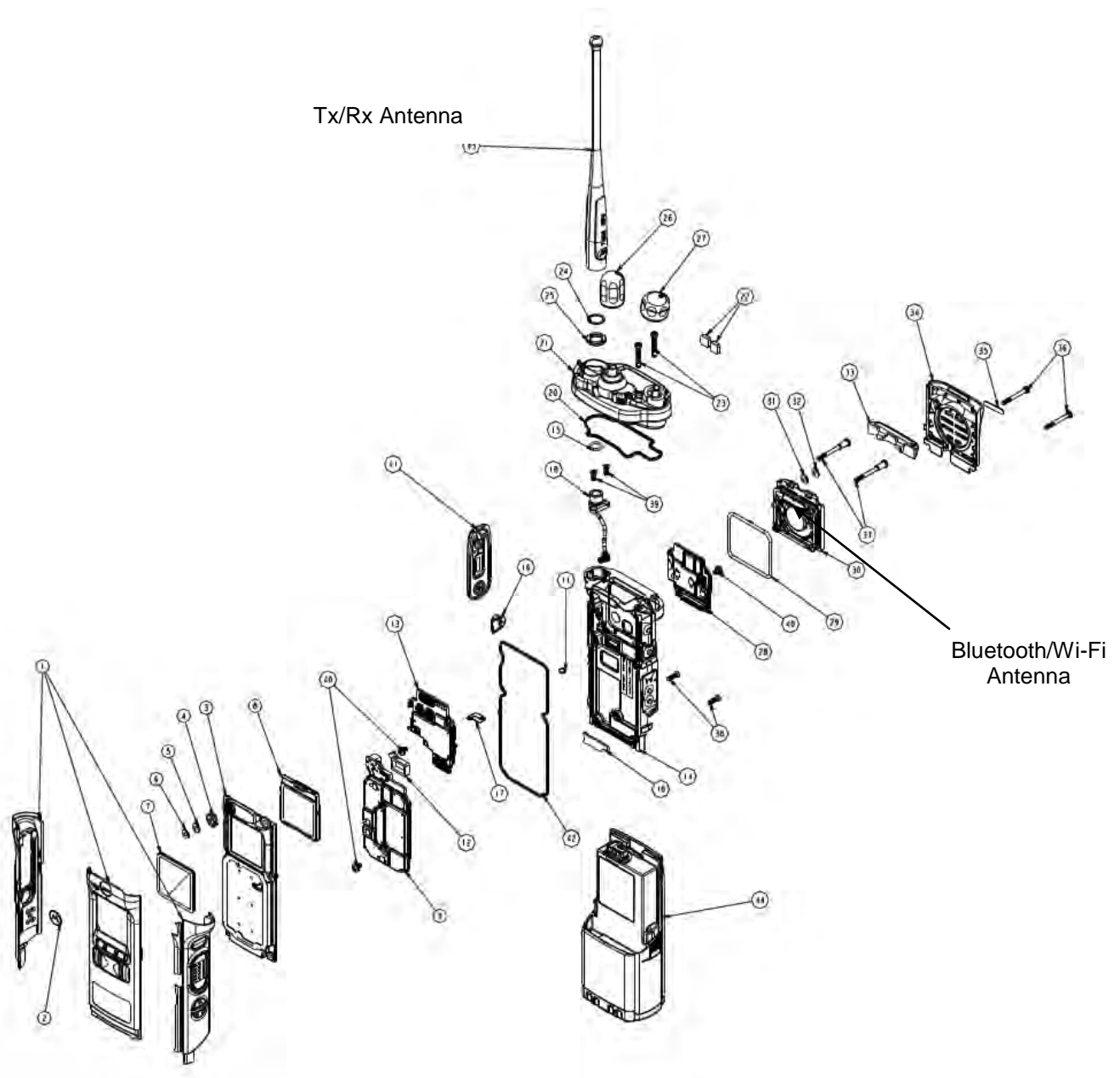
Exploded view of APX6000/APX6000Li/APX5000/SRX2200 Model 3.5

Exhibit 9AF



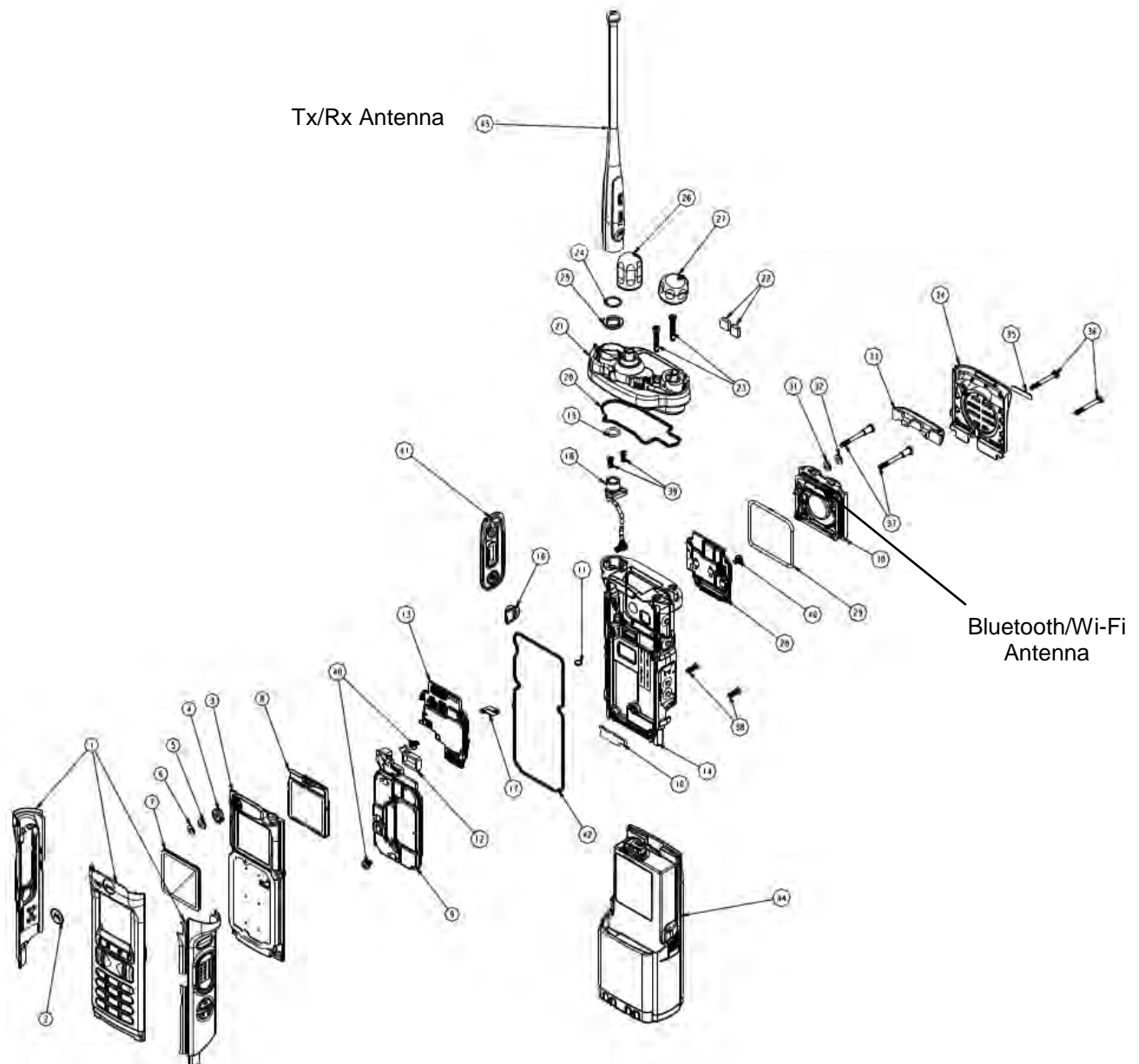
Exploded view of APX6000XE Model 1.5

Exhibit 9AG



Exploded view of APX6000XE Model 2.5

Exhibit 9AH



Exploded view of APX6000XE Model 3.5