

1. Project: ES901BUL2

2. 5.8GHz Antenna Specification

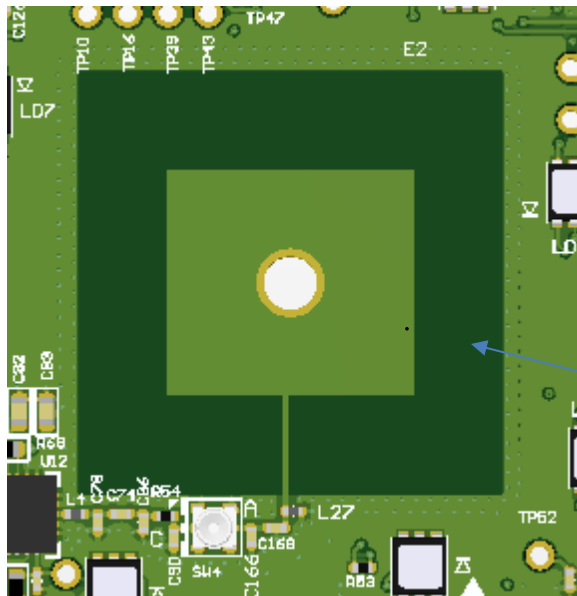
2.1 Electrical functional requirements

Input impedance – 50 ohms Nominal

Frequency band –5.7-5.9GHz

Peak Gain – 1.5 dBi

2.1.1 Antenna PCB trace design



Antenna

3. Wi-Fi/BLE Antenna Specification

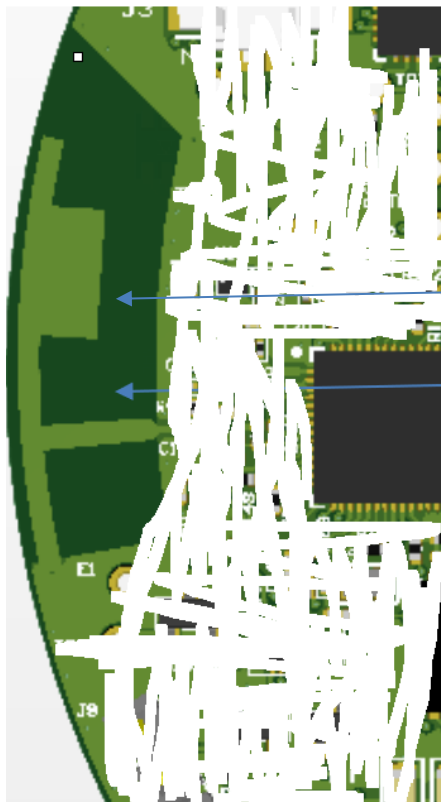
3.1 Electrical functional requirements

Input impedance – 50 ohms Nominal

Frequency band – 2400-2485MHz

Peak Gain – 2.5 dBi

3.2 Antenna PCB trace design



Antenna