

# MAGNETIC EXTENDABLE TRIPOD



BY-PG-MC-300-TR

## PACKAGE INCLUDES:

- 1(One) Magnetic Selfie Light 2.7in. x 2.3in. x 0.75in.(6.9cm x 5.8cm x 1.9cm)
- 1(One) Manual

## FEATURES AND BENEFITS:

- Great for hands free pictures, group photos, video recording, video calling.
- Extends up to 2 feet.
- Remote control: Play/Pause/Shutter button.
- Bluetooth® connection up to 33 feet.
- Don't have a MagSafe® phone? Simply stick an Adhesive Magnetic Ring (included) to your phone's case to instantly transform it into a MagSafe® compatible device.

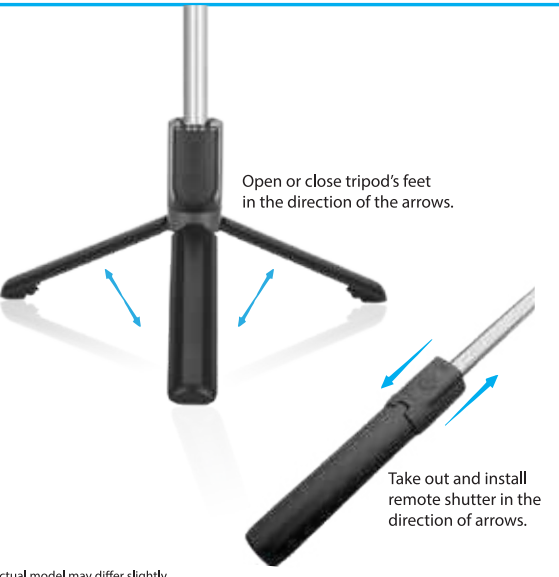
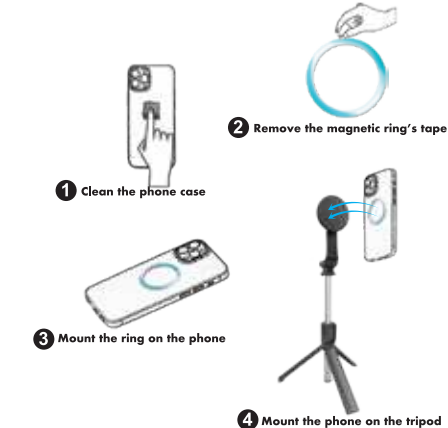
## Pairing Instructions:

1. Go to Bluetooth® Settings on your mobile device.
2. Turn Bluetooth® ON, on your device.
3. Press and hold the camera icon on the shutter remote button until you see a blue blinking light, indicating it is ready to pair.
3. On your Bluetooth® device, select "BY-MC-300" from the list of available devices to pair to.
4. The blue light will shut off when the shutter and your device are paired.
5. To turn off the shutter remote, press and hold the camera icon until the blue light blinks and shuts off.

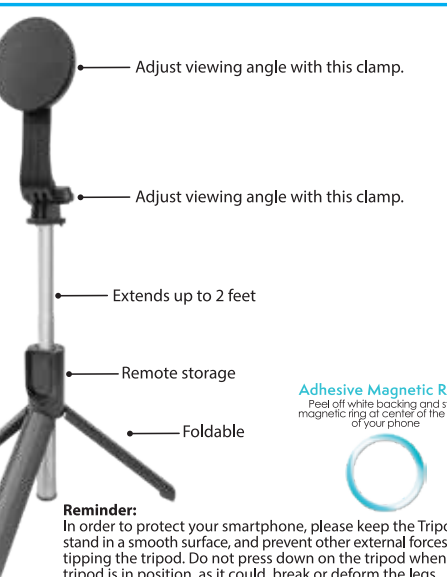


## MAGNETIC RING INSTALLATION

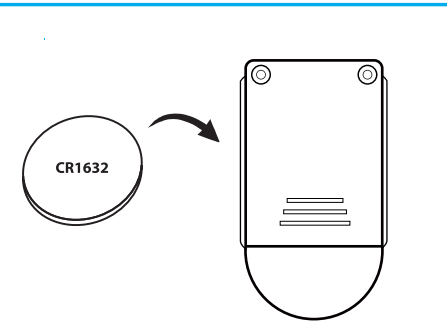
Magnetic Extendable Tripod is compatible with MagSafe® phones. Magnetic ring is optional for devices that have MagSafe® built-in. For phones that don't have MagSafe® built-in, follow instructions below:



\*Actual model may differ slightly.



**Adhesive Magnetic Ring:**  
Peel off white backing and stick magnetic ring at center of the back of your phone



## Battery replacement instructions for shutter remote:

Simultaneously unscrew the 2 screws from the battery door cover.

Slip the battery out from under the holding arm. Replace old battery with new battery.

Replace the top cover, and secure the battery door cover with original screw.

Note: This equipment has been tested and found to comply with the limits for a Class B digital device, pursuant to part 15 of the FCC Rules. These limits are designed to provide reasonable protection against harmful interference in a residential installation. This equipment generates, uses and can radiate radio frequency energy and, if not installed and used in accordance with the instructions, may cause harmful interference to radio communications. However, there is no guarantee that interference will not occur in a particular installation. If this equipment does cause harmful interference to radio or television reception, which can be determined by turning the equipment off and on, the user is encouraged to try to correct the interference by one or more of the following measures:

- Reorient or relocate the receiving antenna.
- Increase the separation between the equipment and receiver.
- Connect the equipment into an outlet on a circuit different from that to which the receiver is connected.
- Consult the dealer or an experienced radio/TV technician for help.

This device complies with part 15 of the FCC Rules. Operation is subject to the following two conditions: (1) This device may not cause harmful interference, and (2) this device must accept any interference received, including interference that may cause undesired operation.

FCC Radiation Exposure Statement:  
This equipment complies with FCC radiation exposure limits set forth for an uncontrolled environment.

Caution: Any changes or modifications not expressly approved could void the user's authority to operate the equipment.

FCC ID:2AHN6-PGMC300

WARRANTY- 12 MONTH

Please visit our website [Bytechintl.com/warranty](http://Bytechintl.com/warranty)

\*All Trademarks and copyrights are the property of the respective companies.  
\*iPhone® is a registered trademark of Apple, Inc.  
\*MagSafe® is a registered trademark of Apple, Inc.  
\*Bluetooth® is a registered trademark of SIG.Inc  
\*Smartphones not included.

Distributed By: 1616 Holdings, Inc.  
701 Market Street, Suite 200  
Philadelphia, PA 19106  
Made in China

## WARNING

- **INGESTION HAZARD:** This product contains a button cell or coin battery.
- **DEATH** or serious injury can occur if ingested.
- A swallowed button cell or coin battery can cause **Internal Chemical Burns** in as little as **2 hours**.
- **KEEP** new and used batteries **OUT OF REACH** of **CHILDREN**
- **Seek immediate medical attention** if a battery is suspected to be swallowed or inserted inside any part of the body.



- Remove and immediately recycle or dispose of used batteries according to local regulations and keep away from children. Do NOT dispose of batteries in household trash or incinerate.
- Even used batteries may cause severe injury or death.
- Call a local poison control center for treatment information.
- Compatible battery type 3V CR1632.
- Non-rechargeable batteries are not to be recharged.
- Do not force discharge, recharge, disassemble, heat above (77° F / 25° C) or incinerate. Doing so may result in injury due to venting, leakage or explosion resulting in chemical burns.
- Ensure the batteries are installed correctly according to polarity (+ and -).
- Do not mix old and new batteries, different brands or types of batteries, such as alkaline, carbon-zinc, or rechargeable batteries.
- Remove and immediately recycle or dispose of batteries from equipment not used for an extended period of time according to local regulations.
- Always completely secure the battery compartment. If the battery compartment does not close securely, stop using the product, remove the batteries, and keep them away from children.

BLACK-ONLY, ONE SIDED  
ACCORDIAN STYLE FOLD

