

PCS 1900 RF Interference Potential Test Report

Hardware Setup

Probe Calibration Date	EF3DV3 - SN4041 March 11, 2024
DAE Calibration Date	DAE4 Sn1798 May 22, 2024
Software Version	1.2.6.2199

Communication Systems

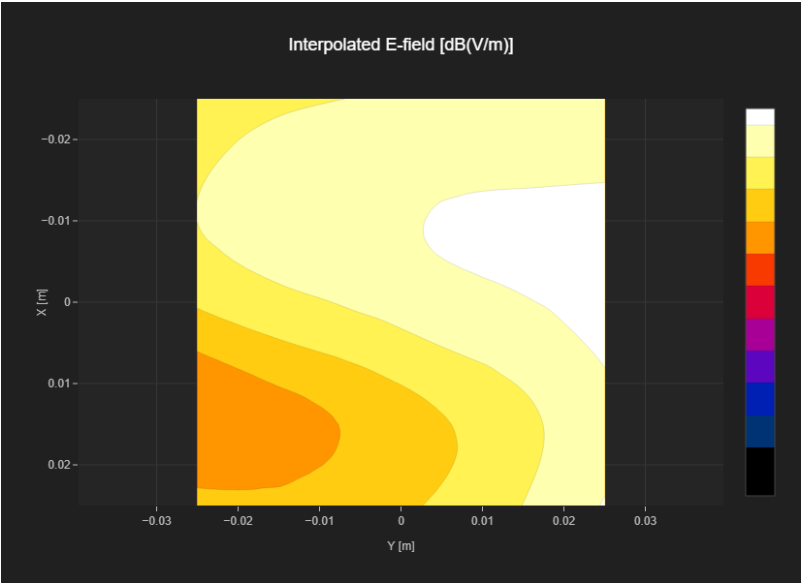
MIF	3.8
Channel Frequency [MHz]	512 1850.2
Communication Systems' Name	GPRS-FDD (TDMA, GMSK, TN 0)

Grid Settings

Extent X [mm]	50.0	Step X [mm]	10.0
Extent Y [mm]	50.0	Step Y [mm]	10.0
Distance [mm]	15.0		

Results

Emax [dBV/m]	23.07	Eavg 50x50 Max [dBV/m]	20.6
Drift [dB]	0.02	RFail [dBV/m]	24.4



PCS 1900 RF Interference Potential Test Report

Hardware Setup

Probe Calibration Date	EF3DV3 - SN4041 March 11, 2024
DAE Calibration Date	DAE4 Sn1798 May 22, 2024
Software Version	1.2.6.2199

Communication Systems

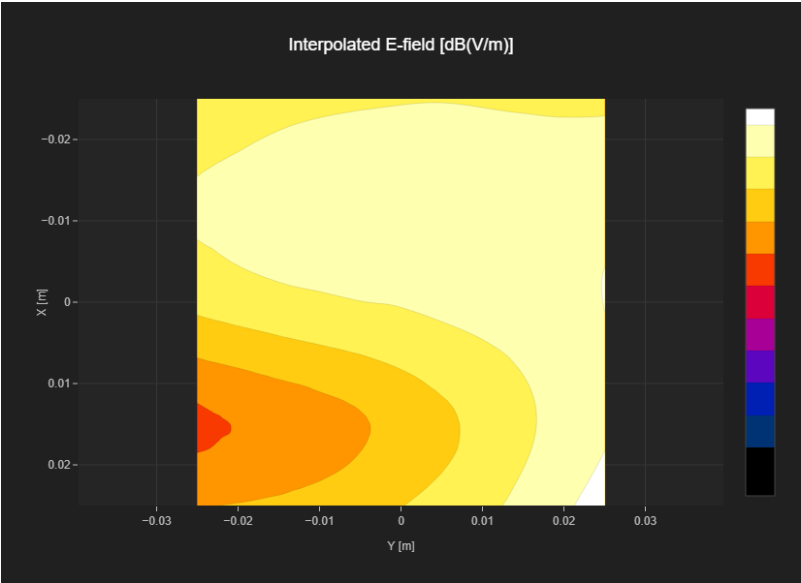
MIF	3.8
Channel Frequency [MHz]	661 1880.0
Communication Systems' Name	GPRS-FDD (TDMA, GMSK, TN 0)

Grid Settings

Extent X [mm]	50.0	Step X [mm]	10.0
Extent Y [mm]	50.0	Step Y [mm]	10.0
Distance [mm]	15.0		

Results

Emax [dBV/m]	23.44	Eavg 50x50 Max [dBV/m]	20.61
Drift [dB]	0.12	RFail [dBV/m]	24.41



PCS 1900 RF Interference Potential Test Report

Hardware Setup

Probe Calibration Date	EF3DV3 - SN4041 March 11, 2024
DAE Calibration Date	DAE4 Sn1798 May 22, 2024
Software Version	1.2.6.2199

Communication Systems

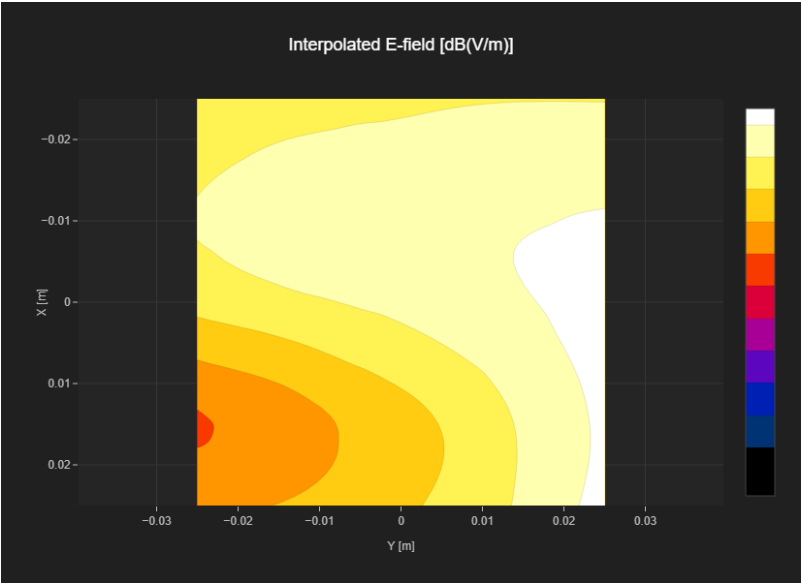
MIF	3.8
Channel Frequency [MHz]	810 1909.8
Communication Systems' Name	GPRS-FDD (TDMA, GMSK, TN 0)

Grid Settings

Extent X [mm]	50.0	Step X [mm]	10.0
Extent Y [mm]	50.0	Step Y [mm]	10.0
Distance [mm]	15.0		

Results

Emax [dBV/m]	23.42	Eavg 50x50 Max [dBV/m]	20.83
Drift [dB]	0.08	RFail [dBV/m]	24.63



PCS 1900 RF Interference Potential Test Report

Hardware Setup

Probe Calibration Date	EF3DV3 - SN4041 March 11, 2024
DAE Calibration Date	DAE4 Sn1798 May 22, 2024
Software Version	1.2.6.2199

Communication Systems

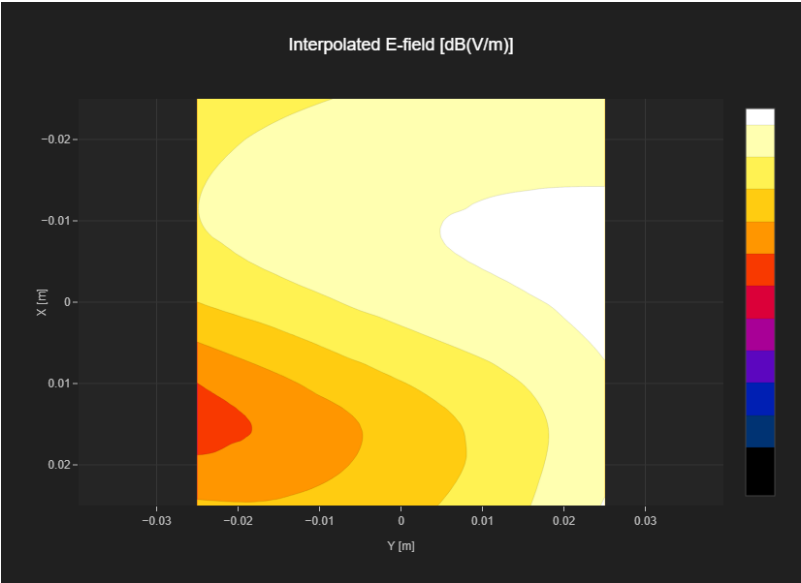
MIF	1.15
Channel Frequency [MHz]	512 1850.2
Communication Systems' Name	GPRS-FDD (TDMA, GMSK, TN 0-1)

Grid Settings

Extent X [mm]	50.0	Step X [mm]	10.0
Extent Y [mm]	50.0	Step Y [mm]	10.0
Distance [mm]	15.0		

Results

Emax [dBV/m]	25.95	Eavg 50x50 Max [dBV/m]	23.36
Drift [dB]	0.01	RFail [dBV/m]	24.51



PCS 1900 RF Interference Potential Test Report

Hardware Setup

Probe Calibration Date	EF3DV3 - SN4041 March 11, 2024
DAE Calibration Date	DAE4 Sn1798 May 22, 2024
Software Version	1.2.6.2199

Communication Systems

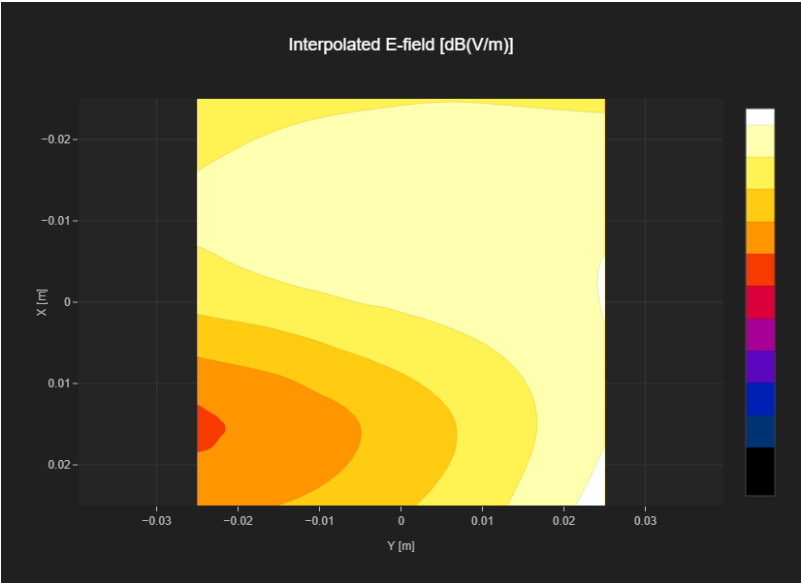
MIF	1.15
Channel Frequency [MHz]	661 1880.0
Communication Systems' Name	GPRS-FDD (TDMA, GMSK, TN 0-1)

Grid Settings

Extent X [mm]	50.0	Step X [mm]	10.0
Extent Y [mm]	50.0	Step Y [mm]	10.0
Distance [mm]	15.0		

Results

Emax [dBV/m]	24.98	Eavg 50x50 Max [dBV/m]	23.41
Drift [dB]	0.02	RFail [dBV/m]	24.56



PCS 1900 RF Interference Potential Test Report

Hardware Setup

Probe Calibration Date	EF3DV3 - SN4041 March 11, 2024
DAE Calibration Date	DAE4 Sn1798 May 22, 2024
Software Version	1.2.6.2199

Communication Systems

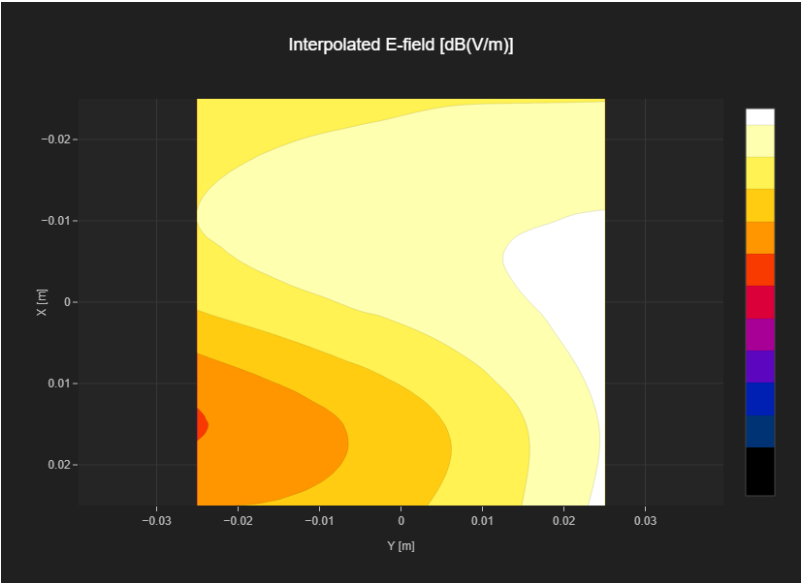
MIF	1.15
Channel Frequency [MHz]	810 1909.8
Communication Systems' Name	GPRS-FDD (TDMA, GMSK, TN 0-1)

Grid Settings

Extent X [mm]	50.0	Step X [mm]	10.0
Extent Y [mm]	50.0	Step Y [mm]	10.0
Distance [mm]	15.0		

Results

Emax [dBV/m]	26.27	Eavg 50x50 Max [dBV/m]	23.63
Drift [dB]	0.06	RFail [dBV/m]	24.78



PCS 1900 RF Interference Potential Test Report

Hardware Setup

Probe Calibration Date	EF3DV3 - SN4041 March 11, 2024
DAE Calibration Date	DAE4 Sn1798 May 22, 2024
Software Version	1.2.6.2199

Communication Systems

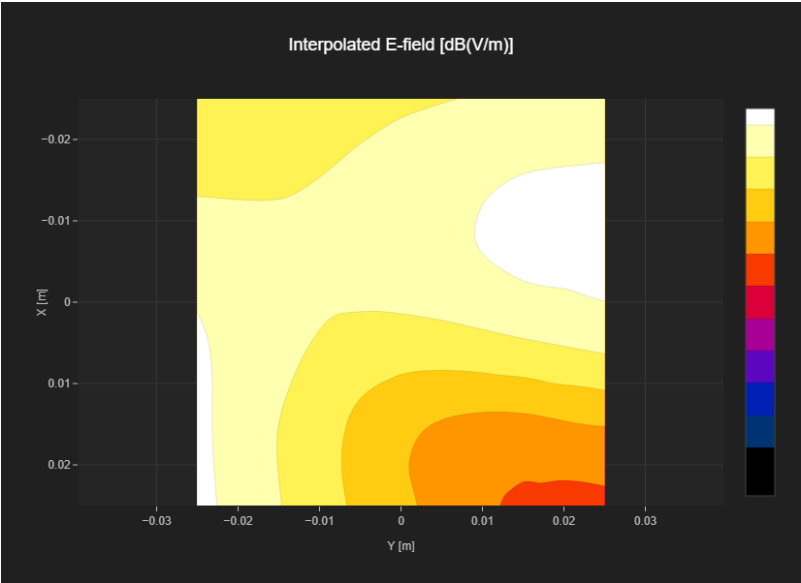
MIF	3.8
Channel Frequency [MHz]	512 1850.2
Communication Systems' Name	GPRS-FDD (TDMA, GMSK, TN 0)

Grid Settings

Extent X [mm]	50.0	Step X [mm]	10.0
Extent Y [mm]	50.0	Step Y [mm]	10.0
Distance [mm]	15.0		

Results

E _{max} [dBV/m]	27.51	E _{avg 50x50 Max} [dBV/m]	24.93
Drift [dB]	0.05	R _{Fail} [dBV/m]	28.73



PCS 1900 RF Interference Potential Test Report

Hardware Setup

Probe Calibration Date	EF3DV3 - SN4041 March 11, 2024
DAE Calibration Date	DAE4 Sn1798 May 22, 2024
Software Version	1.2.6.2199

Communication Systems

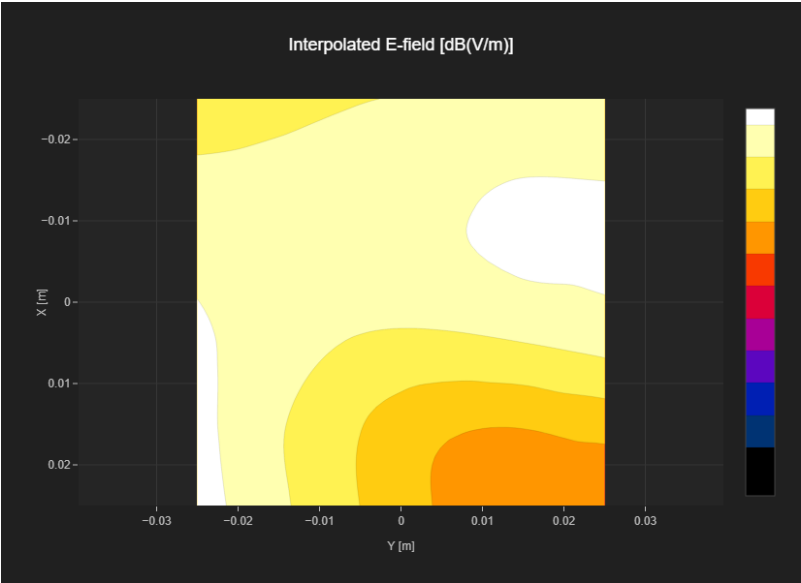
MIF	3.8
Channel Frequency [MHz]	661 1880.0
Communication Systems' Name	GPRS-FDD (TDMA, GMSK, TN 0)

Grid Settings

Extent X [mm]	50.0	Step X [mm]	10.0
Extent Y [mm]	50.0	Step Y [mm]	10.0
Distance [mm]	15.0		

Results

E _{max} [dBV/m]	27.36	E _{avg 50x50 Max} [dBV/m]	25.04
Drift [dB]	-0.01	RFail [dBV/m]	28.84



PCS 1900 RF Interference Potential Test Report

Hardware Setup

Probe Calibration Date	EF3DV3 - SN4041 March 11, 2024
DAE Calibration Date	DAE4 Sn1798 May 22, 2024
Software Version	1.2.6.2199

Communication Systems

MIF	3.8
Channel Frequency [MHz]	810 1909.8
Communication Systems' Name	GPRS-FDD (TDMA, GMSK, TN 0)

Grid Settings

Extent X [mm]	50.0	Step X [mm]	10.0
Extent Y [mm]	50.0	Step Y [mm]	10.0
Distance [mm]	15.0		

Results

Emax [dBV/m]	27.09	Eavg 50x50 Max [dBV/m]	24.69
Drift [dB]	-0.01	RFail [dBV/m]	28.49

