

User Manual of PS4 Bluetooth Controller

Dear User:

Thank you very much for choosing the Game Controller! Please read this Manual in detail before use in order to operate and use it correctly, and bring the superior performance of the product into full play. The descriptions in this Manual are based on the default settings of the device; all the pictures, statements and text information in this Manual are for reference only, please refer to the actual product. The content is subject to update without further notice. The update will be included in the new version of the Manual, and the Company reserves the right of final interpretation. Available functions and additional services may vary by device, software or service provider. Please charge the product fully before use. If there are typographical errors or translation errors, we sincerely hope for all users understanding!

1. Introduction

The Controller is a Dual Shock 4 Bluetooth controller for PS4 console, with Bluetooth distance reach more than 10M; using new motion sensing technology, built in three-axis gyroscope and three-axis accelerator, composed of 6-axis sensor function, a full range of dynamic information including Roll, Pitch, and Yaw are detected. In addition to accurately sensing the tilt angle of the Controller, it can also capture acceleration information on the X, Y, Z, and 3 axes of three-dimensional space, and quickly transmit all that information to the game system. With this feature, players can use PS4 Dual Shock 4's innovative motion-sensing technology to play games with special operation. The Dual Shock 4 also increased new features, including a two-point capacitive inductive Touchpad which can be pressed on the front of the Controller. The Dual Shock 4 is also the first controller to support Windows personal PC. There are several output ports inside the controller, including a 3.5mm TRRS stereo connector for headphones and microphones, allowing users to receive and transmit Audio at the same time. The Controller also has a Micro-USB port, an expansion port, and a mono speaker. The Controller can be charged via Micro-USB or exclusive charger.

The Controller is also equipped with a light bar that displays various colors. Different colors can be used to represent different game players, and can be used as an important message reminder (for example, the game character's health reduced, etc.). In addition, the light bar can also interact with the PlayStation Camera, allowing the Camera to determine the Controller's actions and distance through the light bar.

2. Feature

1. Standard buttons: P4, Share, Option, ↑, ↓, ←, →, ×, ○, □, △, L1, L2, L3, R1, R2, R3, VRL, VRR, RESET.
2. The controller adopts Bluetooth 4.2 version with stable performance, and the Bluetooth distance can reach more than 10M. It supports all PS4 consoles with different version.
3. The Controller with 3D acceleration sensor and gyroscope sensor function, composed of 6 axis

sensor function, with RGB LED color channel indication, easy to distinguish different users and roles.

4. The Bluetooth connection mode is same as the original Controller.

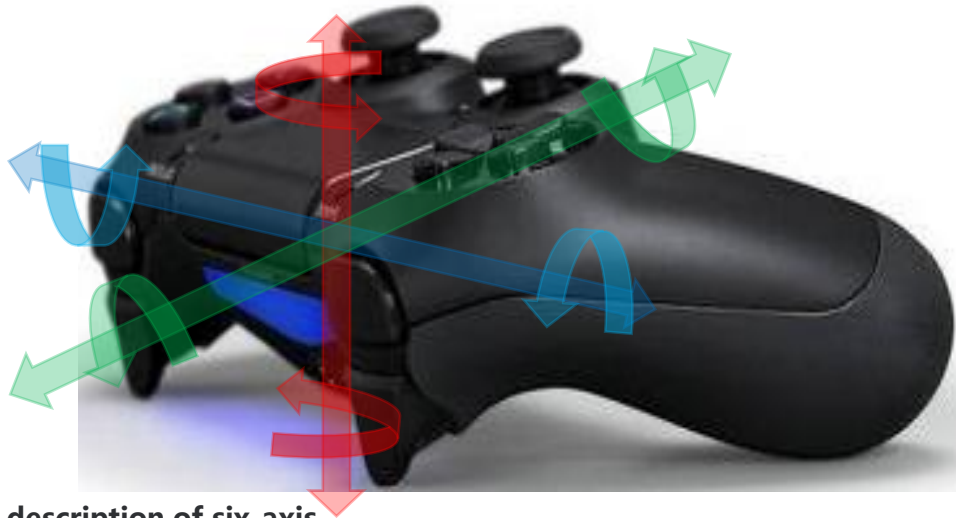
5. It support charge by USB, and charge by EXT charge port ; Support 3.5mm TRRS stereo jack can connect headphones and microphone, built-in speaker independent output; Support double point capacitive inductive Touchpad ; Support double motor vibration function, use pressure sensitive motor.

6. The controller uses standard PS4 function (The same function as the original controller, can work on the PC through the driver, no need driver on Windows10).

3. Product Function

3.1 PS4 Controller Six-axis Sensor function

3.1.1. The six-axis function composed of 3D-Sensor and G-Sensor, as shown in the figure below



3.1.2. The description of six-axis

X-axis : the acceleration movement of X-axis (X+/X-direction movement) , the movement is : Left → Right, Right → Left ; Some games with this features, for example the game ' NBA07 '.

Y-axis : the acceleration movement of Y-axis (Y+/Y- direction movement) , the movement is : Front → Back, Back → Front ; Some games with this features, for example the game ' NBA07'.

Z-axis : the acceleration movement of Z axis (Z+/Z-direction movement) , the movement is : Up → Down, Down → Up ; Some games with this features, for example the game ' NBA07'.

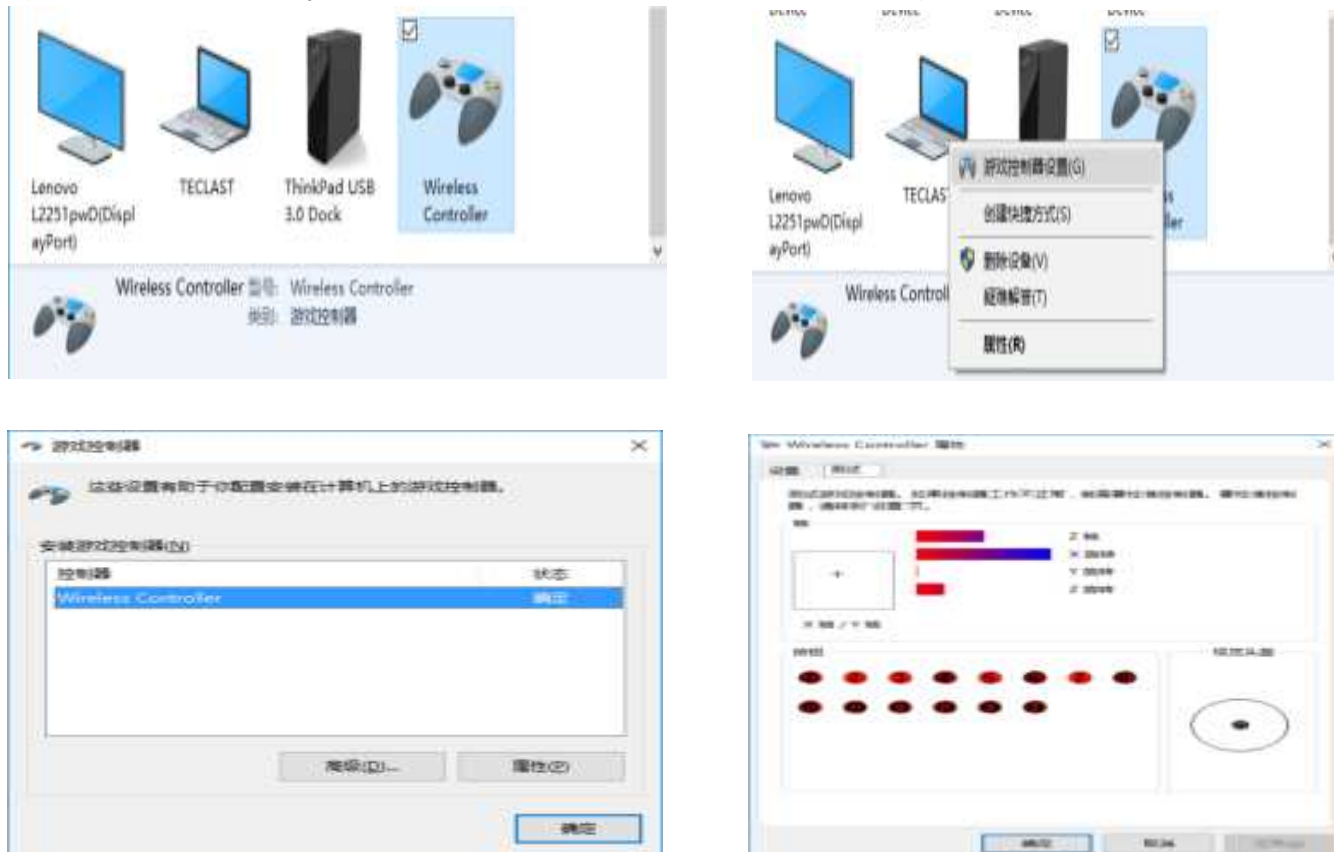
Roll axis (left and right tilt) : tilt left and right with the Y-axis as the center , the movement is : Level → Left tilt , Level → Right tilt ; These games with this features: 'BLAZING ANG, TONY HAWK' S, GENJI, RIDGE RACER' .

Pitch axis (front and back tilt) : tilt front and back with the X-axis as the center , the movement is : Level → Front tilt, Level → Back tilt. These games with this features : 'BLAZING ANG" 、 'TONY HAWK' S, 'GENJI' .

Yaw axis : (left and right rotation) : rotate left and right with the Z-axis as the center, the movement is : Level → Left rotation, Level → Right rotation. These games with this features: 'NBA07' 、 'TONY HAWK' S' .

3.2 The controller works in Standard-PS4 mode

3.2.1 Any function in the game can be realized on the PS4 console, including basic digital and analog buttons, as well as the six-axis SENSOR function and LED color display function, and can also support vibration function for specific games ; And in the Windows10 PC test will appear a virtual 6 axis 14 key + visual helmet function of the device, in this time the device could not achieve any operation; 6 Axis 16Key 1POV in Windows 10 default interface (D-Input mode) .



3.3 Color LED indicator

The LED on Controller will be displayed as a breathing light in orange color when charging under shutdown state, and the indicator light will go off after full charge.

When multiple Controllers are connected to the PS4 console at the same time, the controller LED will be display different colors to distinguish players. For example, user 1 will display blue light, user 2 will display red light... It displays white light and flashes when the Controller is disconnected.

3.4 PS4 Console Connection Method

3.4.1 When the Controller is not connected to the current PS4 console or has been connected to other consoles and needs to be connected to the current console, it first needs to use a USB cable to connect with the PS4 console. In the process of connection, the program automatically match code , press the P4 button, and the Controller will be connected wireless by Bluetooth with the Console.

When connecting the USB, press the P4 key, the LED light of the Controller will display a constant color, then it indicates that the Controller has been connected with the Console.

When multiple Controllers are connected to the Console at the same time, the LED light of the Controller will display different colors to distinguish different users and players.

3.4.2 The common PS4 console supports multiple Bluetooth devices, and the Controller is perfect

support for PS4 series games.

3.4.3 The Controller can only be used in USB wired mode on the PS3 console, and the indicator color is displayed randomly.

3.5 The connection method of Apple devices iOS 13.0 or above system

3.5.1 The Dual Shock 4 Controller support connecting Apple devices with iOS13.0 or above system , support games in Apple Store , it compatible with Apple systems, support for games: Metal Slug 3, Minecraft, Wild Ride 8 and other games.

The same screen operation function of PS4 consoles and Apple devices : search and download PS4 Remote Play in the PP assistant , and installed it , both the Console and Apple devices are connected to the network, and log in the same account as the PS4 console, then you can use Apple devices play PS4 games on the same screen as the PS4 console, the Controller can play PS4 games on Apple devices. At present, the Controller does not support touchpad, 6-axis and vibration functions, which is the same as the original Controller.

3.5.2 The Connection method

(1) Make sure your iPhone, iPad have been upgraded to iOS 13 and above system.

(2) When the Controller is turned off, press and hold the SHARE button, and then press P4 combination key (SHARE + P4), long press for 3 seconds, the Controller enter the Pairing, the white light on Controller flashing.

(3) Open the Settings of iPhone, iPad, click the "Bluetooth" and turn it on, find the device "Dual Shock 4 Wireless Controller" and click it for connecting, the LED light displays pink after connected the device.

Remark : If the Controller is not connected to the device in about 60 seconds, the Controller will shut down and sleep.

3.6 The connection method of Android devices

When the Controller is turned off, press the SHARE button, and then press P4 combination key (SHARE + P4), long press for 3 seconds, the Controller enter the Pairing and the white light on Controller flashing. Open the Android device, click the "Bluetooth" and turn it on, find the name " Wireless Controller" and click it for connecting, the LED light display blue after connected the device. If the Controller is not connected to the device in about 60 seconds, the Controller will shut down and sleep. When the Controller is connected to the device, if you need to close the Controller, long press the P4 button for 10 seconds to shut the Controller down.

3.7 PC Wired Connection

Connect the Controller to the Computer by a USB cable and the Computer will automatically install the driver , you can see the driver is being installed in the Windows 7/10 interface. After the driver is installed, the Controller icon will appear in the "Device and Printer" screen and the device name is "Wireless Controller".

4. The Controller Auto Sleep / Power ON/OFF

If the Controller fails to connect with the PS4 Console within 30 seconds, the Controller will go to

sleep ;

Short press the P4 button to wake up the Controller during hibernation. The sleep time can be set on the Console.

Short press the P4 button for Power ON, the white LED flashing and the Controller enters the search reconnect state, long press the P4 button for 8-10 seconds to turn the Controller off.

5. Lower Battery Alarm

When the Controller battery is low, the current mode indicator is blinking, indicating that the battery is low. If you continue to use the Controller until its voltage reaches a certain value, the Controller will automatically go to sleep.

6. Recharge

The Controller is built-in Lithium-ion battery, which is connected to PS4 Console through Micro-USB data cable or a DC 5V output AC power adapter for charging. When the controller power off and charging, the indicator will be displayed as a breathing light with random color, and the indicator light will go off after full charged.

7. Reset Function

When the Controller function is abnormal or crashes, you can reset the Controller by pressing the button of the reset hole on the Controller backside.

Reset mode : Insert a slender object into the Reset hole on the Controller backside and press it with a little force to reset the Controller.

8. Controller button corresponding table

PS4	□	×	○	△	L1	R1	L2	R2	SHARE	OPTION	L3	R3	PS	T-PAD
PC	1	2	3	4	5	6	7	8	9	10	11	12	13	14
IOS	X	A	B	Y	LB	LT	RB	RT						

9. Controller reference current

RAM	Symbol	Mini Data	Typical Data	Max Data	Unit
Working Voltage	Vo	3.4		4.5	V
Working Current	Io		55		mA
Sleep Current	Isp		0		uA
Motor Current	Im			80-100	mA

10. Controller Electrical specification

Power Supply	Built-in Li Battery	Working Time	≈10 hour
Capacity	600MAH	Charging Time	≈2.5 hour
Charging	USB DC5V	Charging Current	<400MA
Axis Sensor	Six-Axis Gyro	Vibration	Support Dual Motors

FCC Statement

This equipment has been tested and found to comply with the limits for a Class B digital device, pursuant to part 15 of the FCC Rules. These limits are designed to provide reasonable protection against harmful interference in a residential installation. This equipment generates, uses and can radiate radio frequency energy and, if not installed and used in accordance with the instructions, may cause harmful interference to radio communications. However, there is no guarantee that interference will not occur in a particular installation. If this equipment does cause harmful interference to radio or television reception, which can be determined by turning the equipment off and on, the user is encouraged to try to correct the interference by one or more of the following measures:

- Reorient or relocate the receiving antenna.
- Increase the separation between the equipment and receiver.
- Connect the equipment into an outlet on a circuit different from that to which the receiver is connected.
- Consult the dealer or an experienced radio/TV technician for help.

Caution: Any changes or modifications to this device not explicitly approved by manufacturer could void your authority to operate this equipment.

This device complies with part 15 of the FCC Rules. Operation is subject to the following two conditions: (1) This device may not cause harmful interference, and (2) this device must accept any interference received, including interference that may cause undesired operation.

RF Exposure Information

The device has been evaluated to meet general RF exposure requirement. The device can be used in portable exposure condition without restriction.