

Functions

Power on/off

Press and hold the power-on button for 3 seconds. The indicator will be on and the robot will be powered on.

If the power is lower than 10% when the robot is outside the station, the robot will power off automatically.

When the robot is working, you can press and hold the power-on button for 3 seconds to power off the robot.

Tip: During charging, the robot will power on automatically and cannot be powered off. If you need to power off the robot, move it out of the station first.

Start/Pause

You can short press the start button to start cleaning and short press it again to pause cleaning. When you press and hold the start button for 3 seconds, the robot will return to the station.

Map building

The first time you power on the robot, place it into the station and short press the start button on the station. The robot will start to build a map.

If there is no map in the app, place the robot in the station and select map building in the app. The robot will start to build a map. After the map is built, the robot will return to the station automatically.

Tip: During map building, keep the robot away from children and pets and do not move the robot or station.

Area-specific cleaning

Use the app to set the designated area. The robot will clean the designated area as instructed.

Overall automatic cleaning

In the app, select overall automatic cleaning. The robot will automatically plan the path, adjust the cleaning parameters (when AI recognition is enabled), and clean room by room. After cleaning is finished, the robot will return to the station.

Scheduled cleaning

You can set a scheduled cleaning task through the app. The robot will automatically start cleaning at the specified time and return to the station automatically after the cleaning is finished.

Tip: If the DND mode is enabled, the scheduled cleaning task will not be executed during the DND period.

Resumable cleaning

The robot supports resumable cleaning. When the battery is low during the cleaning process, the robot will automatically find the station for charging. After charging is finished, the robot will return to the interrupted point to continue cleaning. If you end the cleaning task manually during the charging process, the resumable cleaning will be canceled.

Functions

No-go area

You can set the no-go area through the app to prevent the robot from entering the area that doesn't need to be cleaned.

Tips:

- Before using this function, you need to save the map in the app.
- Moving the robot or significant changes in the home environment may cause the map to become invalid, resulting in the loss of the no-go area.

Return to station

If you press the return button in the app when the robot is powered on and outside the station, the robot will end the current task and return to the station. If the robot is pulled out of the station forcibly during the charging process, the robot will return to the station automatically 35 seconds later. When the power is too low during work, the robot will automatically return to the station for charging. When the power is sufficient, the robot will automatically return to the interrupted point to continue cleaning. After finishing the cleaning task, the robot will automatically return to the station.

Dust collection

After the robot finishes the cleaning task and returns to the station, the station will automatically collect dust for the robot. If you press the return button in the app when the robot is working, the robot will automatically return to the station and trigger dust collection. When the robot is idle in the station, you can press the dust collection button on the screen of the station or in the app to trigger dust collection.

Tips:

- When the battery is too low and the robot returns to the station for charging, dust collection will not be performed. Dust collection will be triggered only when the task is finished.
- Dust collection will not be performed if you trigger the dust collection function too frequently

through the app.

- In the DND period, the robot will not collect dust but will charge itself by default. You can change it on the "DND" interface in the app.

Rinsing

After finishing the cleaning task and returning to the station, the robot will carry out the rinsing task.

Tips:

- The robot will start rinsing only after the water change is completed.
- The rinsing task will be interrupted if the power supply of the station is disconnected, the robot leaves the station, the sewage box is full, or the water tank is not installed in place. You need to check before rinsing.
- In the DND period, the robot will not carry out the rinsing task but will charge itself by default. You can change it on the "DND" interface in the app.
- In the DND period, the robot will not carry out the rinsing task but will charge itself by default. You can disable it through the app.

Hot air drying

After finishing the cleaning task and returning to the station, the robot will carry out the hot air drying task. Press the hot air drying button in the app to trigger the hot air drying function.

Tip: In the DND period, the robot will not carry out the air drying task but will charge itself by default. You can change it on the "DND" interface in the app.

Water purification and recycling

After the robot finishes the cleaning task and returns to the station, the station will automatically recycle the sewage in the robot and refill it with clean distilled water. The water recycling system purifies the sewage into sterile distilled water by distillation. At the same time, it collects water from the air by condensation to replenish the consumption. In this way, the station does not need to add clean water or empty sewage.

Functions

Distillation and disinfection

The distillation and disinfection system heats the sewage recovered to the station into slightly boiling water (90°C), which effectively kills H1N1 virus, Staphylococcus aureus, Candida albicans, Escherichia coli, and other germs. After the triple treatment of distillation and disinfection, silver ion sterilization module, and Unilever herbal cleaning solution, the sterile distilled water achieves a 99.9% degerming effect for floor mopping.

Carpet recognition

After recognizing the carpet during the cleaning process, the robot automatically enables suction enhancement. You can disable this function in the app. If you enable the carpet avoidance function in the app, the robot will automatically bypass the carpet.

Tip: The robot may misrecognize children's floor mats, yoga mats, sponge mats, and hard short-wool carpets, which, however, will not affect normal use. You can set the no-go area to prevent the robot from entering the area that doesn't need to be cleaned.

Cleaning along the edge

When the robot is cleaning the corners and legs of tables and chairs, the roller mop automatically expands to clean along the edges. After finishing cleaning along the edges, the roller mop automatically retracts. The roller mop also automatically retracts during obstacle avoidance when cleaning along the edges.

Resetting/Restoring the system

Short press the networking button 3 times to restore the default settings.

DND mode

In the DND period, the robot does not respond to resumable cleaning or scheduled cleaning and does not provide active voice announcements. The DND mode is enabled by default, and the default time period is from 10:00 pm to 8:00 am. You can disable and modify the DND mode through the app.

Tip: In the DND period, the indicator goes off after the robot has been charged for 1 minute.

Sleep

The robot will automatically enter the sleep state if it is not running or not operated for more than 5 minutes in the non-charging state. The robot will end the sleep state and automatically power off when the power is lower than 10%. You can wake up the robot by pressing buttons on the robot or station or through the app.

Tip: The robot will not enter the sleep state when it is in the station.

Maintenance

Robot

Accessory name	Recommended cleaning frequency	Recommended replacement frequency
Side brush	Once every month	Every 3-6 months
Roller mop	Once every month	Every 3 months
Main brush	Once every month	Every 6-12 months
Dust box filter	Clean as needed	Every 6-12 months
Sewage box	Once every month	/
Dust box	Once every month	/
Cliff sensor/Rear IR indicator for recharging	Once every month	/
Camera/Dual-wire laser	Once every month	/
Universal wheel	Clean as needed	/

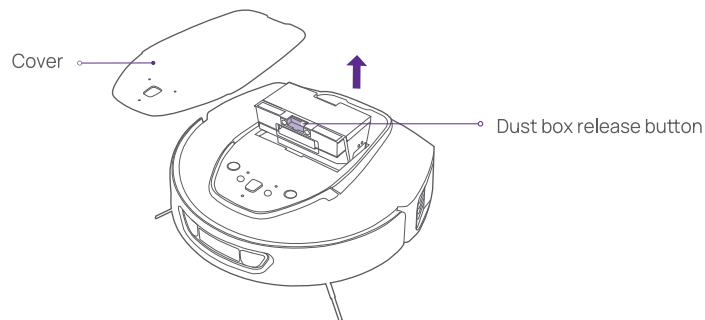
Base station

Accessory name	Recommended cleaning frequency	Recommended replacement frequency
Dust bag	Clean as needed	Replace as needed, typically every 2-3 months
Cleaning solution	/	Replace as needed, typically every 2-3 months
Station filter	Clean as needed	Over 2 years
Cleaning tank	Once every month	/

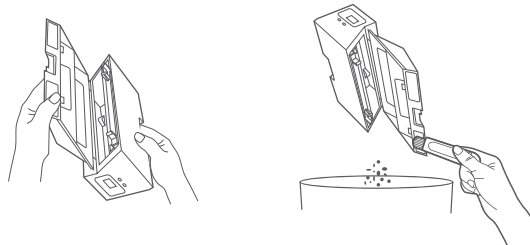
Maintenance

Dust box

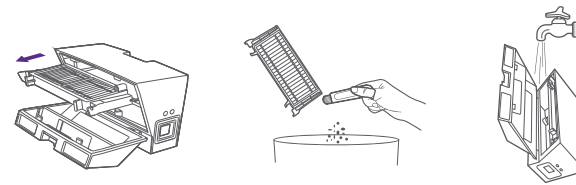
1. Open the robot cover. Press and hold the dust box release button to remove the dust box.



2. Open the dust box cover as shown in the figure. Dump the trash and clean the dust box with the cleaning brush.



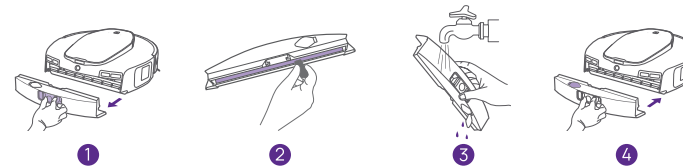
3. Remove the filter as shown in the figure. Clean the dust box and filter with the cleaning brush, rinse with water, and dry them. After that, install them in place.



Tips: It is recommended to clean the dust box thoroughly at least once every two weeks. Be sure to dry the dust box and filter before use.

Sewage box

1. Press and hold the sewage box release button to remove the sewage box.
2. Clean the sewage tank with a cleaning brush.
3. Rinse and dump the residual water in the sewage box.
4. Flatten the rubber plug and install the sewage box in place.



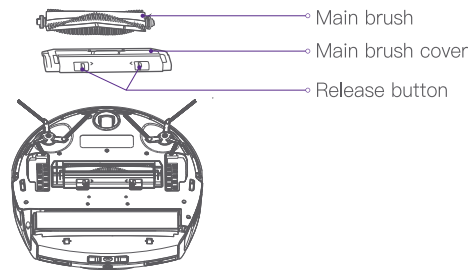
Tips:

- After mopping, take out the sewage tank and clean it in time to avoid odor and mold.
- The sewage box must be placed and removed forward. Before moving or turning the robot, remove the sewage box to avoid water leakage into the main unit.
- Clean the sewage tank regularly.

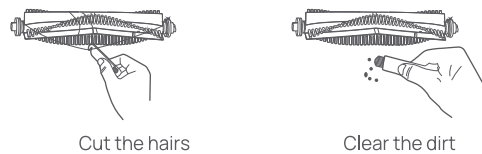
Maintenance

Main brush

1. Turn the robot over, and press and hold both release buttons to remove the main brush cover.
2. Take out the main brush upward.
3. Use the blade on the cleaning brush to cut hairs tangled on the main brush and thoroughly clean the main brush.
4. Install the main brush and then the main brush cover. Press the main brush cover to install it in place.



Main brush cleaning method

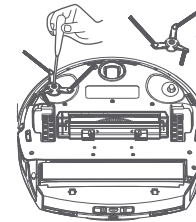


Tips:

- To ensure the cleaning effect, it is recommended to replace the main brush every 6-12 months.
- The sewage box must be placed and removed forward. Before moving or turning the robot, remove the sewage box to avoid water leakage into the main unit.

Side brush

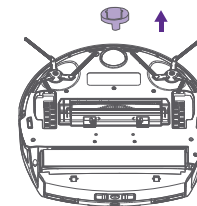
1. Turn the robot over and remove the side brush screws.
2. Remove and clean the side brush.
3. Install the side brush and tighten the screws.



Tips: To ensure the cleaning effect, it is recommended to replace the side brush every 3-6 months.

Universal wheel

1. Turn the robot over and pull the universal wheel upward.
2. Clear the hairs and dirt from the universal wheel.
3. Install the universal wheel in place.

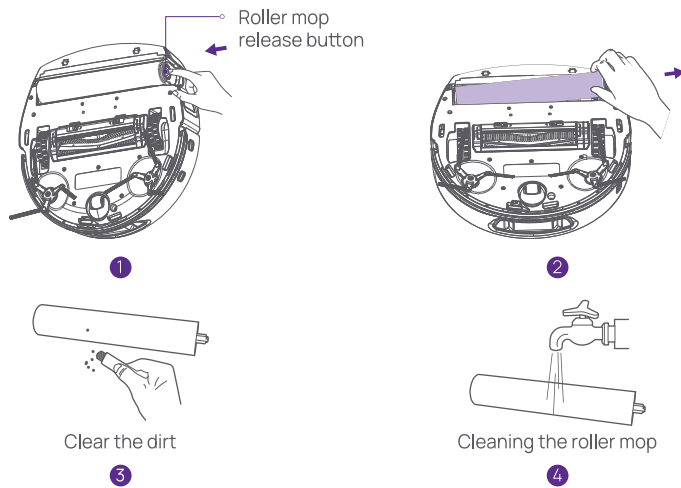


Maintenance

Roller mop

1. Turn the robot over, and press and hold the roller mop release button. Lift the roller mop upwards and pull it to the right to remove it.
2. Use the cleaning brush to clear the dirt from the roller mop, and then thoroughly rinse the roller mop.
3. Install the roller mop and press the roller mop release button to install it in place.

Roller mop removal procedure:

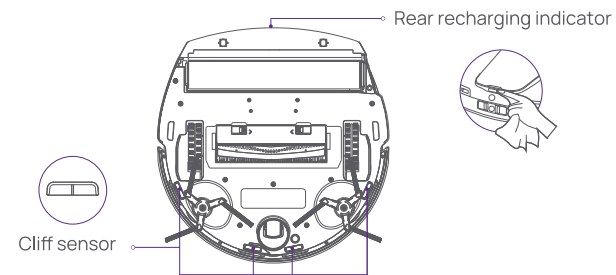


Tips:

- To ensure the mopping effect, it is recommended to replace the roller mop every 3 months.
- The sewage box must be placed and removed forward. Before moving or turning the robot, remove the sewage box to avoid water leakage into the main unit.

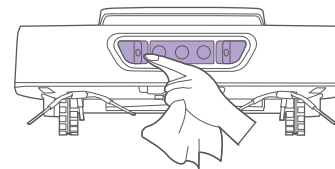
Cliff sensor/Rear recharging indicator

Clean the cliff sensor and rear recharging indicator regularly with a soft dry cloth.



Camera/Dual-wire laser

Clean the camera/dual-wire laser regularly with a soft dry cloth.



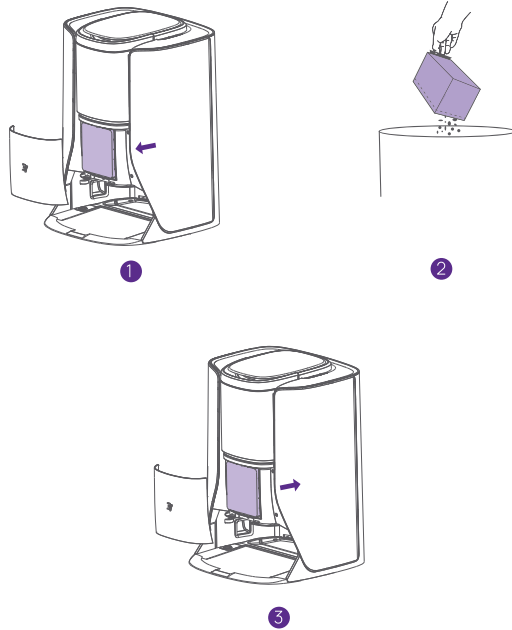
Tips:

- Do not use chemicals such as detergents or sprays to clean the camera/dual-wire laser.

Maintenance

Dust bag

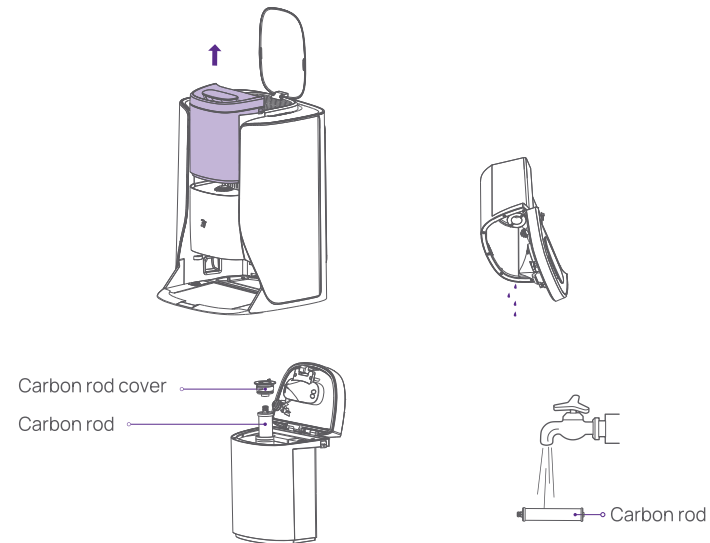
1. Open the dust box and remove the dust bag filled with trash.
2. Wipe the dust box with a rag and install a new dust bag.
3. Close the dust box.



Tips: To avoid affecting the effect of dust collection, replace the dust bag when it is full of trash.

Water tank

1. Open the station cover and take out the water tank.
2. Pour the residual water and pull out the carbon rod from the water tank.
3. Clear the stains and impurities in the carbon rod slot.
4. Install the carbon rod and add clean water.
5. Buckle the water tank cover, install the water tank, and close the station cover.



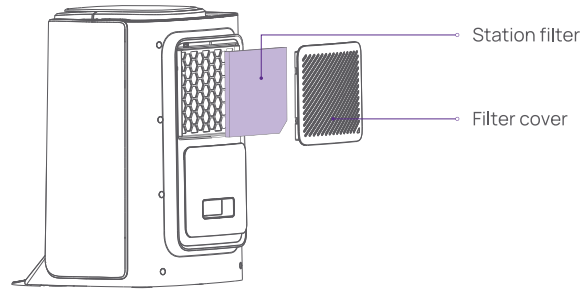
Tips:

- It is recommended to clean the water tank and add clean water at least once every 2 weeks.
- It is recommended to replenish the cleaning solution of the specified brand when the cleaning solution at the station runs out.

Maintenance

Station filter

1. Press and hold the filter cover release button to remove the station filter.
2. Clear the dust on the filter and filter cover.
3. Install the station filter and filter cover in place.

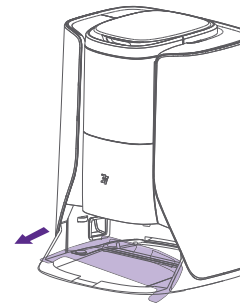


Tips:

- After cleaning the station filter regularly, be sure to dry the filter cover and the station filter before use.
- It is recommended to replace the station filter every 1-2 years.

Cleaning tank/Recharging tray

Remove the cleaning tank as shown in the figure. Clean the cleaning tank and charging tray to avoid odor and mold.



Tips: It is recommended to clean the cleaning tank and charging tray once a month.