

VERTU

SP-1V BLUETOOTH TRAVEL SPEAKER

USER GUIDE VERSION 1.0

TABLE OF CONTENTS

English.....	1
Français.....	23
Deutsch	45
Italiano.....	67
Р у с с к и й	89
简体中文	111
繁體中文	135

Tiếng Việt.....	157
Bahasa Indonesia	179
Español.....	201
Українська	223
Türkçe.....	245
Հայերեն.....	267

VERTU SP-1V BLUETOOTH TRAVEL SPEAKER

Thank you for purchasing the Vertu SP-1V Bluetooth travel speaker. The SP-1V speaker allows you to enjoy your media and make conference calls wirelessly over Bluetooth. You can use the SP-1V speaker with all Vertu phones and devices that are Bluetooth enabled and have the right specifications.

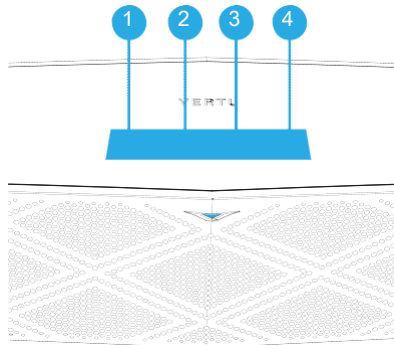
For details, see Specifications on page 16.

PACKAGE CONTENTS

- Bluetooth travel speaker
- Wall charger AC-32V with regional plugs
- Micro USB cable 1200 mm (CA-225DV)
- Audio cable with 3.5 mm to 3.5 mm jack
- Carry pouch
- User guide

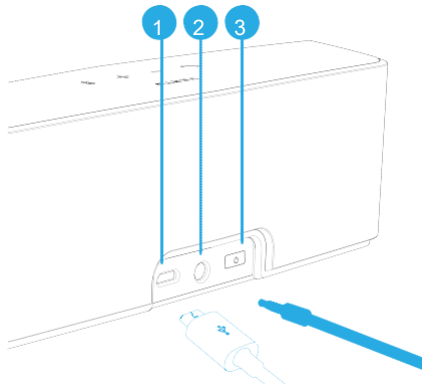
BLUETOOTH TRAVEL SPEAKER

- 1 Answer or reject a call
- 2 Volume down
- 3 Volume up
- 4 Enter or exit Bluetooth pairing mode



BLUETOOTH TRAVEL SPEAKER

- 1 Micro USB port
- 2 3.5 mm jack socket
- 3 Power on or off

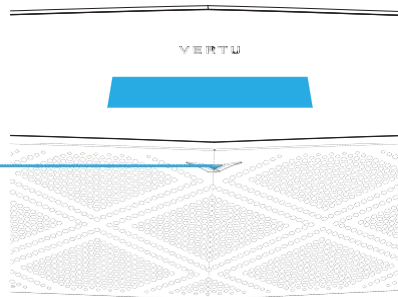


LED STATUS INDICATOR

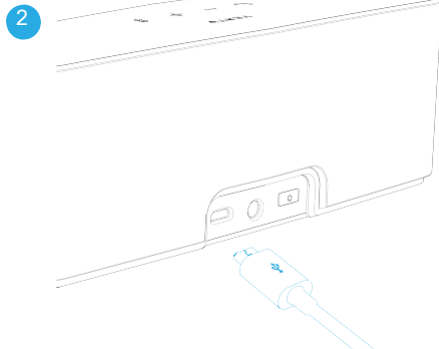
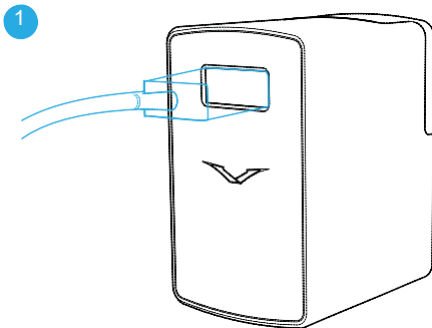
Colour of the light	Speaker status
Flashing white	Switched on
Flashing blue	In Bluetooth pairing mode
Flashing green	Charging
Constant green	Fully charged
Constant red	Power is low

1

LED status indicator



CHARGING THE BLUETOOTH TRAVEL SPEAKER



CHARGING THE BLUETOOTH TRAVEL SPEAKER

- Fully charge the speaker before you use it for the first time.
- Use the supplied AC-32V charger.
- Fully charge the speaker every six months, even if you don't use it.

You can use the speaker while it charges. The speaker might charge more slowly while in use.

CONNECTING THE SPEAKER TO YOUR DEVICE WITH BLUETOOTH

When you switch on the speaker for the first time, it automatically enters pairing mode.

If the speaker does not enter pairing mode, you can use manual pairing or simple secure pairing.

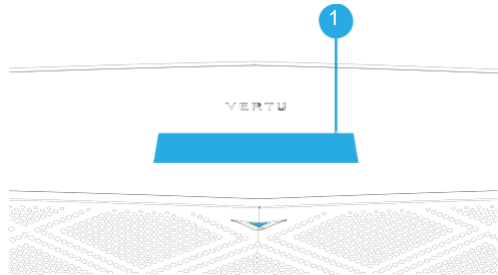
The speaker remembers the paired device and automatically connects to it again when the device is in range and available for pairing.

If the speaker does not pair with a device within 5 minutes, the speaker exits pairing mode.

MANUAL PAIRING

1. Press and hold the Bluetooth pairing button for 2 seconds.
2. There is a sound and the LED indicator flashes blue.
3. Enable Bluetooth on your device.
4. From your device, add or search for devices.
5. From the list, select Vertu SP-1V.
6. If you are asked for a pass code, enter 0000.

- 1 Bluetooth pairing button



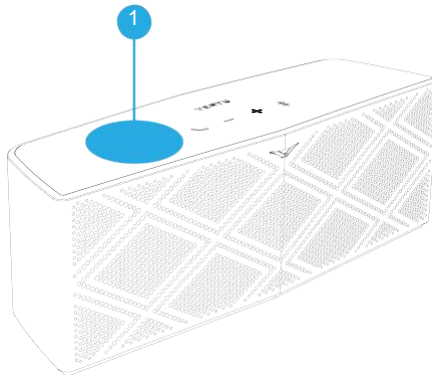
SIMPLE SECURE PAIRING WITH NFC

To use simple secure pairing, your device must be NFC-enabled.

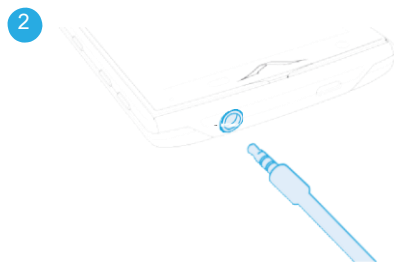
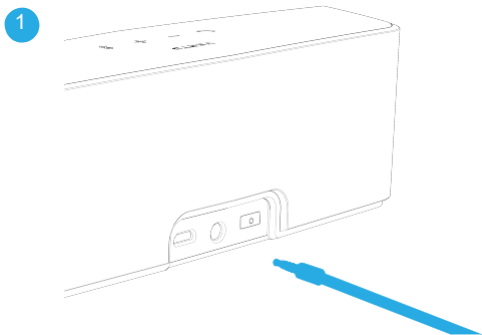
1 NFC area

- Put your NFC-enabled device over the NFC area.

The SP-1V speaker powers up when it detects your device. The LED indicator flashes white and then flashes blue. When the indicator flashes blue, the speaker and the device are connected.



CONNECTING THE SPEAKER TO YOUR DEVICE WITH THE AUDIO CABLE



LISTENING TO MUSIC

1. Connect the speaker to your device.
2. Navigate to the media player on your device and play your music.

For best results:

- Set the volume on your device to maximum and adjust the volume on the speaker.
- Stand the speaker on its base facing forwards.

INCOMING CALLS

If you are connected to your phone, incoming calls and messages take priority over media. You hear your ringtone through the speaker.

Note: If your phone does not support the ringtone transfer feature, the speaker uses its own default ring tone.

CONNECTION PRIORITY

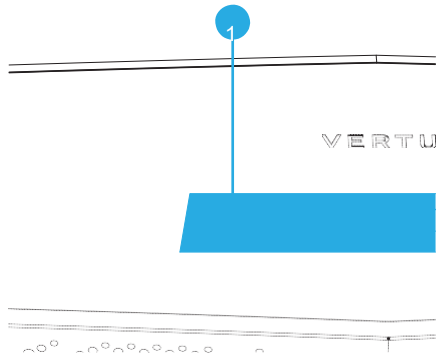
If you connect the speaker to both Bluetooth and the audio cable, then the Bluetooth connection takes priority.

MAKING HANDS-FREE AND CONFERENCE CALLS

CALLS

If you can make hands-free and conference calls with your phone, then you can make them with the SP-1V speaker. You can answer and reject calls with your phone, or with the call button on the speaker.

- 1 The call button



DIALLING WITH THE SPEAKER

- If your phone supports voice dialling with Bluetooth, press the call button to activate voice dialling mode.

ANSWERING CALLS WITH THE SPEAKER

1. Press the call button on the speaker.

The call is played through the speaker.

2. To end the call, press the call button.

If you were listening to music before the call, the speaker resumes playing music.

Some phones might play the call through the phone. You might need to select the speaker as the audio device for hands-free calls.

REJECTING CALLS WITH THE SPEAKER

- Press and hold the call button for about 2.5 seconds, until the call is rejected.

TIPS FOR MAKING HANDS-FREE CALLS

- Speak into the front of the speaker.
- Sit within one metre of the speaker.

TROUBLESHOOTING

Unable to connect the speaker to my device with Bluetooth

- Check that no other Bluetooth devices are connected to the speaker.
- Check that your device is Bluetooth compatible and that Bluetooth is switched on.

Unable to connect the speaker to my device with NFC

- Check that your device is NFC enabled and that NFC is switched on.

Sound is distorted

- Reduce the volume on the speaker. If the speaker volume is at the lowest setting, reduce the volume on the device.
- Check that the speaker is fully charged.

Signal cuts out

- Check that the speaker and device have a direct line of sight. Obstructions can interrupt the signal.
- Check that the device is no more than 10 metres away from the speaker.

No sound or too quiet

- On the Bluetooth setting menu of your device, check that your device is connected to the speaker.
- Check that the speaker is not in pairing mode. The LED indicator flashes blue when the speaker is in pairing mode.
- If you are using the Bluetooth connection, check that the audio cable is not connected.
- If you are using the audio cable connection, check that the jacks are firmly inserted into the sockets.
- Check the volume levels on your speaker and device.
- If you are using the Bluetooth connection and the sound is still too low, try using the audio cable connection.

The speaker turned itself off

- Turn the speaker on. On the Bluetooth setting menu of your device, check that your device is connected to the speaker.
If the speaker does not receive a signal for 15 minutes, it powers off automatically.
- Check that the speaker is fully charged. If the speaker runs low on power, it powers off automatically.

Force power off

- To force the speaker to power off, press and hold the power button for 10 seconds.

SPECIFICATIONS

Audio

- Power rating nominal 5 W, maximum 8 W per channel
- Built-in microphone x1
- Frequency Response: 60 Hz - 35 kHz
- Maximum output power 6 Watts x2
- Support 3.5 mm line-in using Northern American standard
- Approximately 16 hours of continuous play measured at 1 Watt over Bluetooth. Varies by volume level and audio content.

Bluetooth

- Wireless Range: 10 m minimum point to point line of sight in open space
- Supports Enhanced Data Rate (EDR)
- Supports aptX Standard

SUPPORTED BLUETOOTH PROFILES

- Advanced Audio Distribution Profile (A2DP) 1.2
- Hands-Free Profile (HFP) 1.6
- Headset Profile (HSP) 1.2
- Audio Video Remote Control Profile (AVRCP) 1.5

OTHER SPECIFICATIONS

- Micro USB charging port
- Built-in rechargeable Lithium-ion battery

DIMENSIONS

190 mm W x 60 mm D x 61 mm H

SPEAKER MEMORY

The speaker remembers up to 8 paired devices. If you pair a ninth device, the speaker deletes the device that you used least recently.

CARING FOR THE COMPONENTS OF YOUR SP-1V TRAVEL SPEAKER

Do:

- Keep all components dry and free of dust and dirt.
- Clean the components with a soft cloth.

Do not:

- Use or store the components in hot or cold places.
- Drop, knock or shake the components.
- Use harsh or abrasive chemicals, cleaning solvents or strong detergents to clean the components.
- Paint the components.

If you think that the speaker is not working correctly, take it to your nearest Vertu authorised service facility.

NICKEL

The surface of this product is nickel-free.

RoHS STATEMENT

This Product does not contain any of the substances, listed in accordance with EU RoHS (Restriction of Hazardous Substances) Directive 2011/65/EU.

EXPORT CONTROLS

Your Vertu Bluetooth travel speaker (SP-1V) may contain commodities, technology, or software exported from the United States in accordance with the Export Administration regulations. Diversion contrary to U.S. law is prohibited.

DECLARATION OF CONFORMITY



We, Vertu, declare, under our sole responsibility, that the product, Bluetooth travel speaker, type SP-1V and the USB Wall Charger, type AC-32V are in conformity with the provision of Council Directive 1999/5/EC. A copy of the Declaration of Conformity can be found at <http://www.vertu.com>.

EU RECYCLING NOTICE

Vertu complies with European Community requirements for the recycling of Waste Electrical & Electronic Equipment (WEEE). Such compliance is indicated by the addition of the crossed-out wheeled-bin symbol to the Product where appropriate.

Background information on the European WEEE directive is available from http://ec.europa.eu/environment/waste/weee/index_en.htm.



This symbol indicates that the Product was put onto the market after the WEEE legislation was implemented, and that the consumer should not dispose of the Product as normal household waste or unsorted municipal waste, but that it should be appropriately recycled.

If you want Vertu to recycle your Product at the end of its life, please either return it to the point from which you purchased it (if known), or return it to Vertu's headquarters. Alternatively, should you purchase a replacement Product from another supplier, the new supplier is obliged to take back the original Product and recycle it appropriately.

FCC COMPLIANCE STATEMENT

This Class B digital apparatus complies with Canada CAN ICES-3 (B)/NMB-3(B).

Any changes or modifications not expressly approved by the party responsible for compliance could void the user's authority to operate this equipment.

This device complies with Part 15 of the FCC Rules.

Operation is subject to the following two conditions:

- (1) this device may not cause harmful interference, and**
- (2) this device must accept any interference received, including interference that may cause undesired operation.**

FCC COMPLIANCE STATEMENT

Federal Communication Commission Interference Statement

This equipment has been tested and found to comply with the limits for a Class B digital device, pursuant to Part 15 of the FCC Rules. These limits are designed to provide reasonable protection against harmful interference in a residential installation. This equipment generates, uses and can radiate radio frequency energy and, if not installed and used in accordance with the instructions, may cause harmful interference to radio communications. However, there is no guarantee that interference will not occur in a particular installation. If this equipment does cause harmful interference to radio or television reception, which can be

determined by turning the equipment off and on, the user is encouraged to try to correct the interference by one or more of the following measures:

- Reorient or relocate the receiving antenna.
- Increase the separation between the equipment and receiver.
- Connect the equipment into an outlet on a circuit different from that to which the receiver is connected.
- Consult the dealer or an experienced radio/TV technician for help.

WARRANTY

The warranty period Vertu provides for this product is 12 months. For details please visit the local Vertu online warranty text web site www.vertu.com



Copyright © 2014 Vertu Corporation Ltd. All rights reserved.

Vertu and the V logo are registered trademarks. Vertu operates a policy of continuous development. Therefore, Vertu reserves the right to make changes and improvements to any of the products described in this document without prior notice. Refer to www.vertu.com for the latest updates for service and support in your location.

© 2012 CSR plc and its group companies. The APTX® mark and the APTX logo are trademarks of CSR plc or one of its group companies and maybe registered in one or more jurisdictions.

The Bluetooth word mark and logos are owned by the Bluetooth SIG, Inc. and any use of such marks by Vertu is under license

Third party products/names may be TMs of their respective owners.

This device complies with Industry Canada licence-exempt RSS standard(s). Operation is subject to the following two conditions: (1) this device may not cause interference, and (2) this device must accept any interference, including interference that may cause undesired operation of the device.

Le présent appareil est conforme aux CNR d'Industrie Canada applicables aux appareils radio exempts de licence. L'exploitation est autorisée aux deux conditions suivantes : (1) l'appareil ne doit pas produire de brouillage, et (2) l'utilisateur de l'appareil doit accepter tout brouillage radioélectrique subi, même si le brouillage est susceptible d'en compromettre le fonctionnement.

