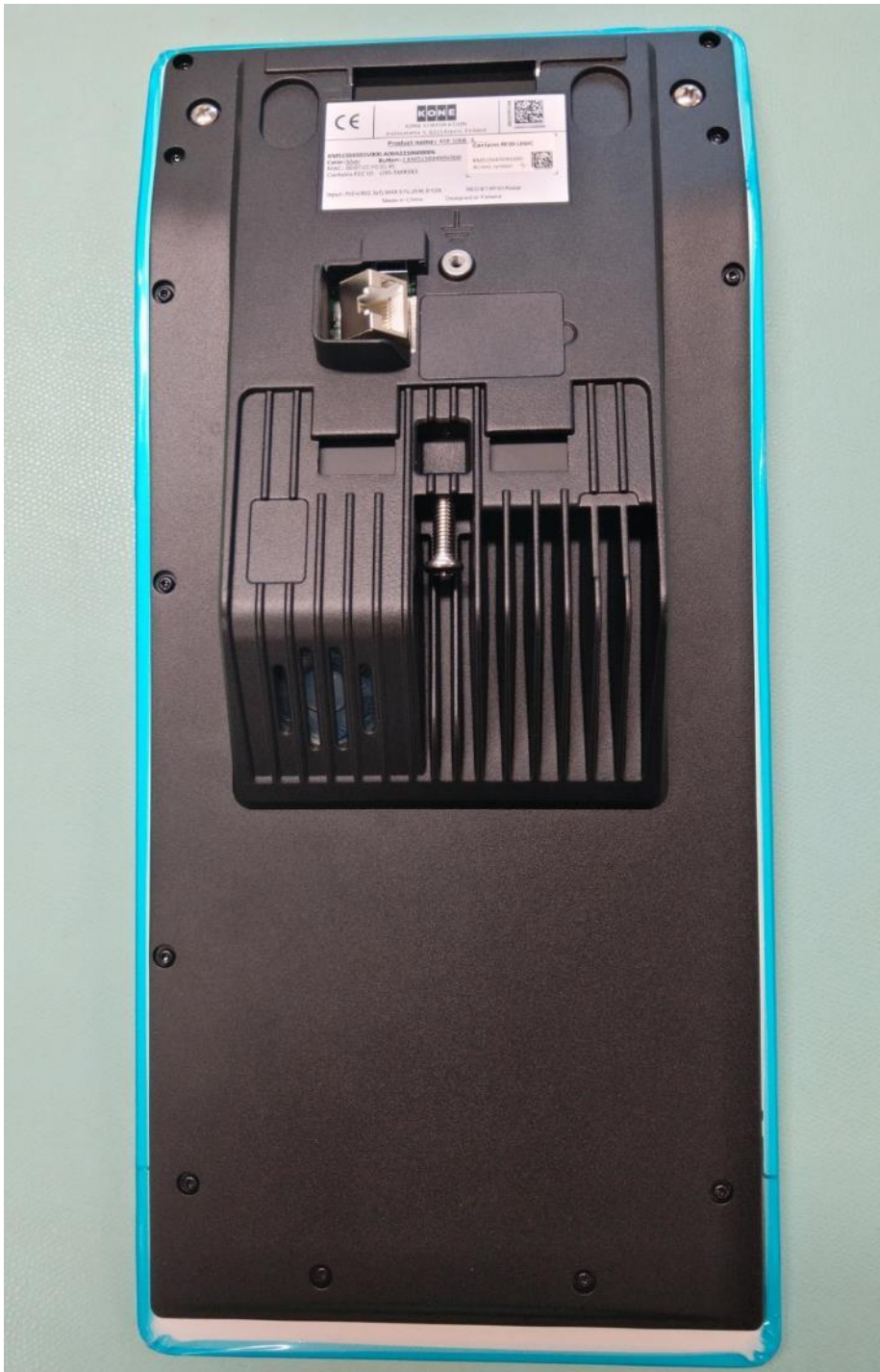




KSP 1068 -L

Front View



KSP 1068 -L

Back View

Back Cover closed



KSP 1068 -L

Front View (Access glass removed)

(Legic RFID antenna is visible behind the removed access glass)



KSP 1068 -L Access glass closed



KSP 1068 -L Access glass removed

(Top side of the "KSP Access module" visible behind aluminum frame in -L Legic configuration)



KSP 1068 -L

Back view

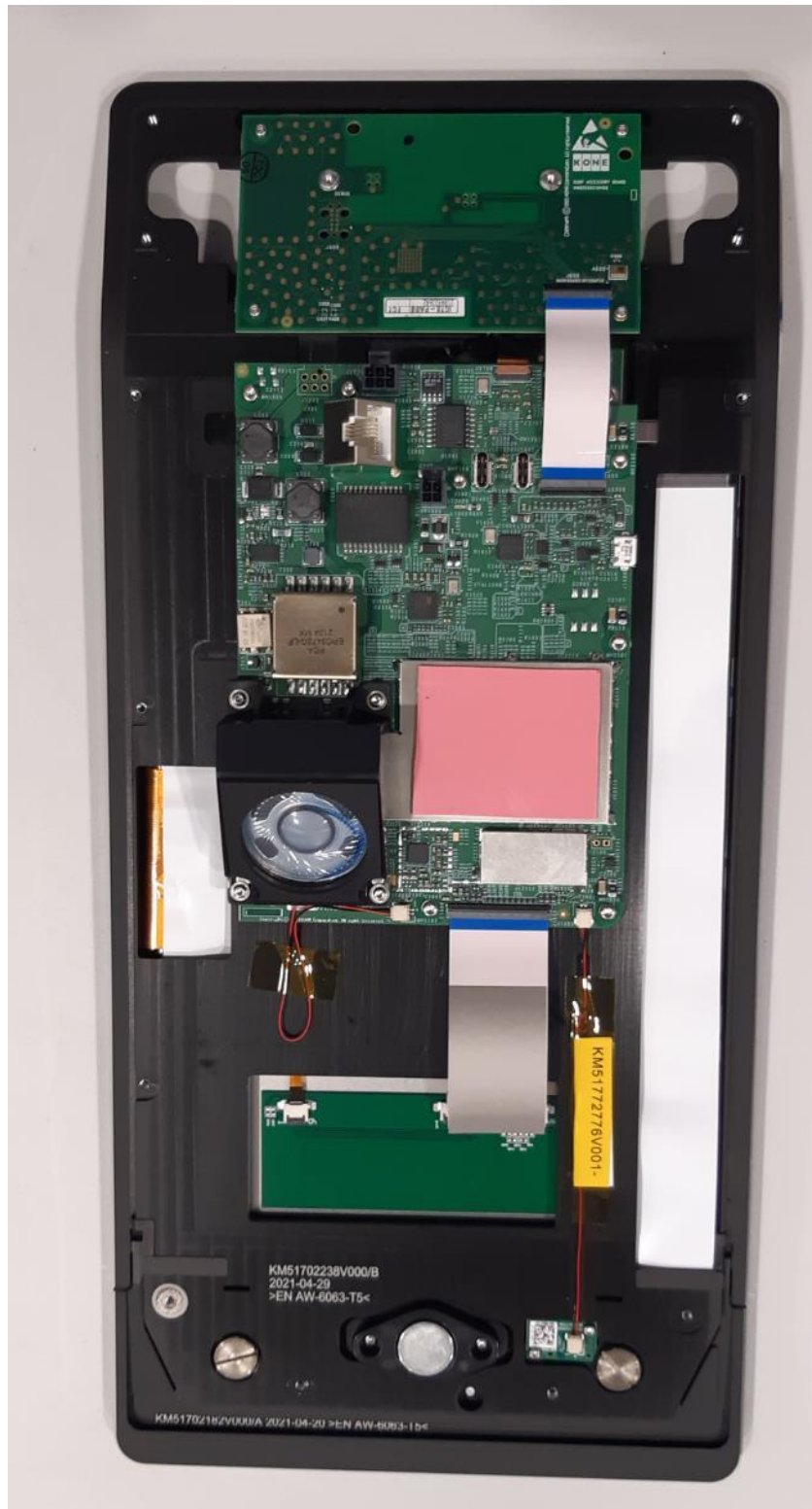
"KSP Access module" not installed



KSP 1028 -L

Back view

“KSP Access module” installed



KSP 1028 -L

Back view

"KSP Access module" installed

FRONT SIDE



REAR SIDE



KSP Access Module



Front View:

"KSP Access module" in -L (Legic) configuration. Legic RFID antenna installed.



Back View:

"KSP Access module" installed to KSP 1068 -H and KSP 1068 -L host devices. (No difference between -H and -L configurations can be seen from back side)

FRONT SIDE



REAR SIDE



RFID Legic Antenna