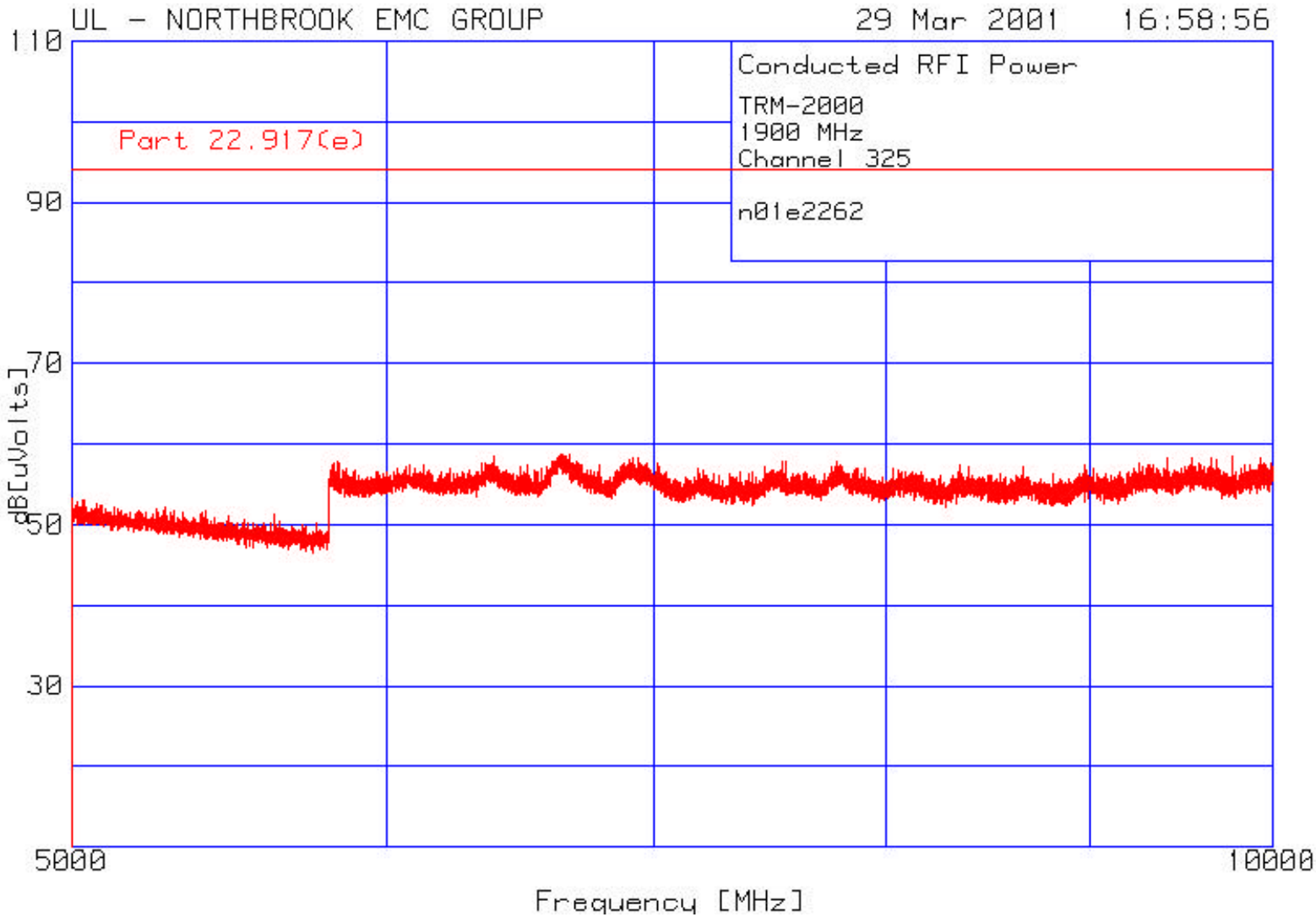
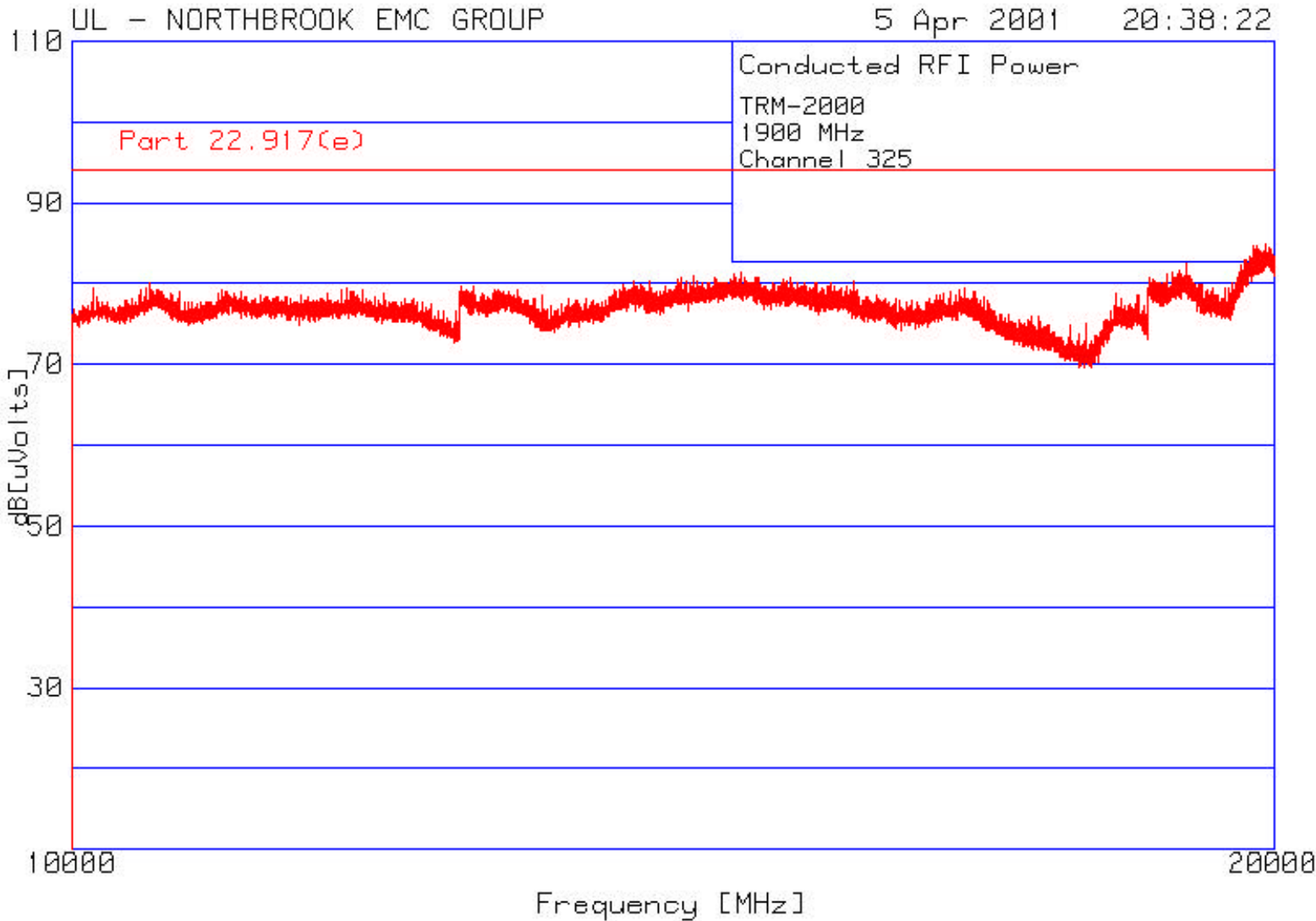


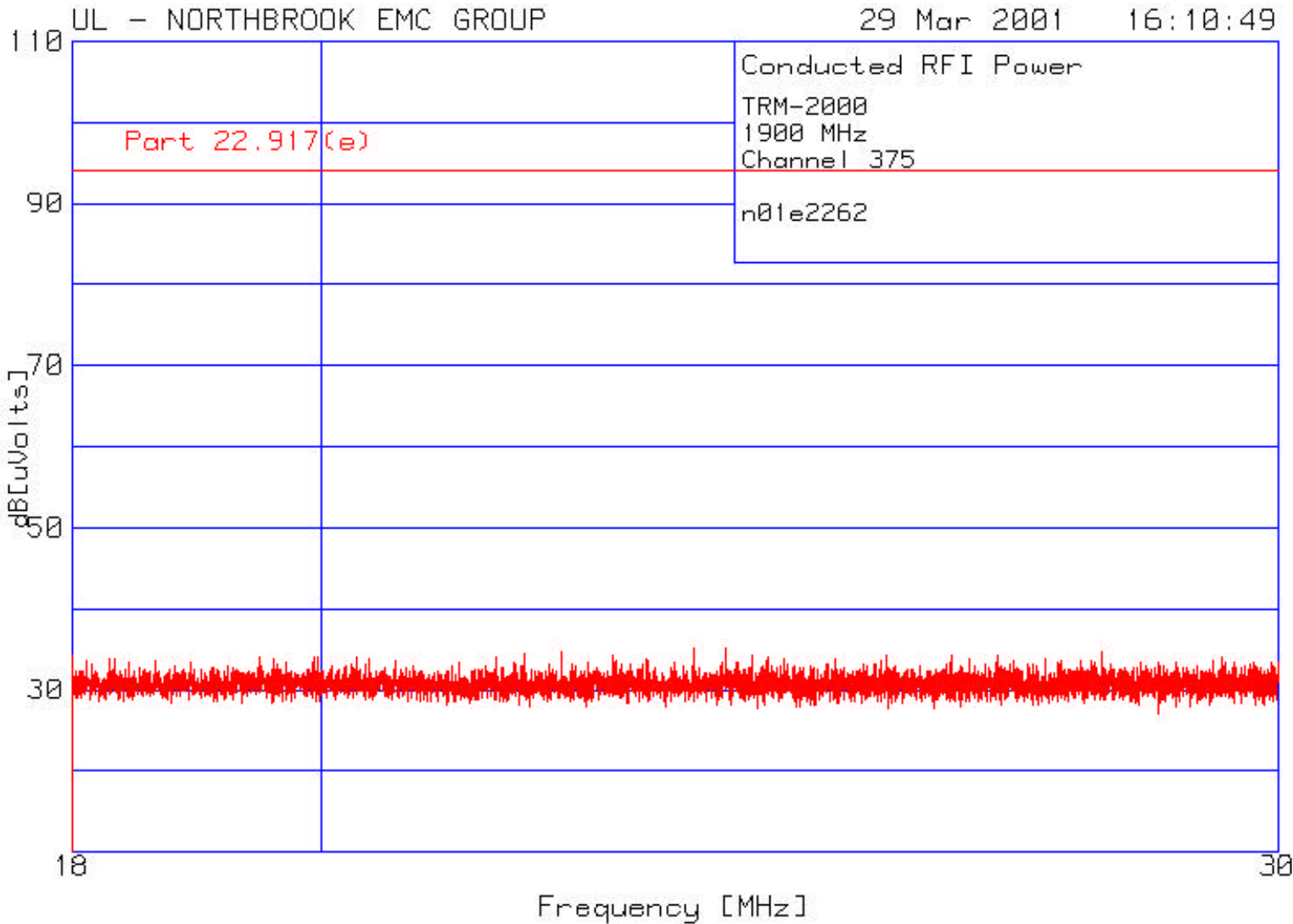
Spurious Emissions at Antenna Terminals  
Channel 0325  
5 to 10 GHz



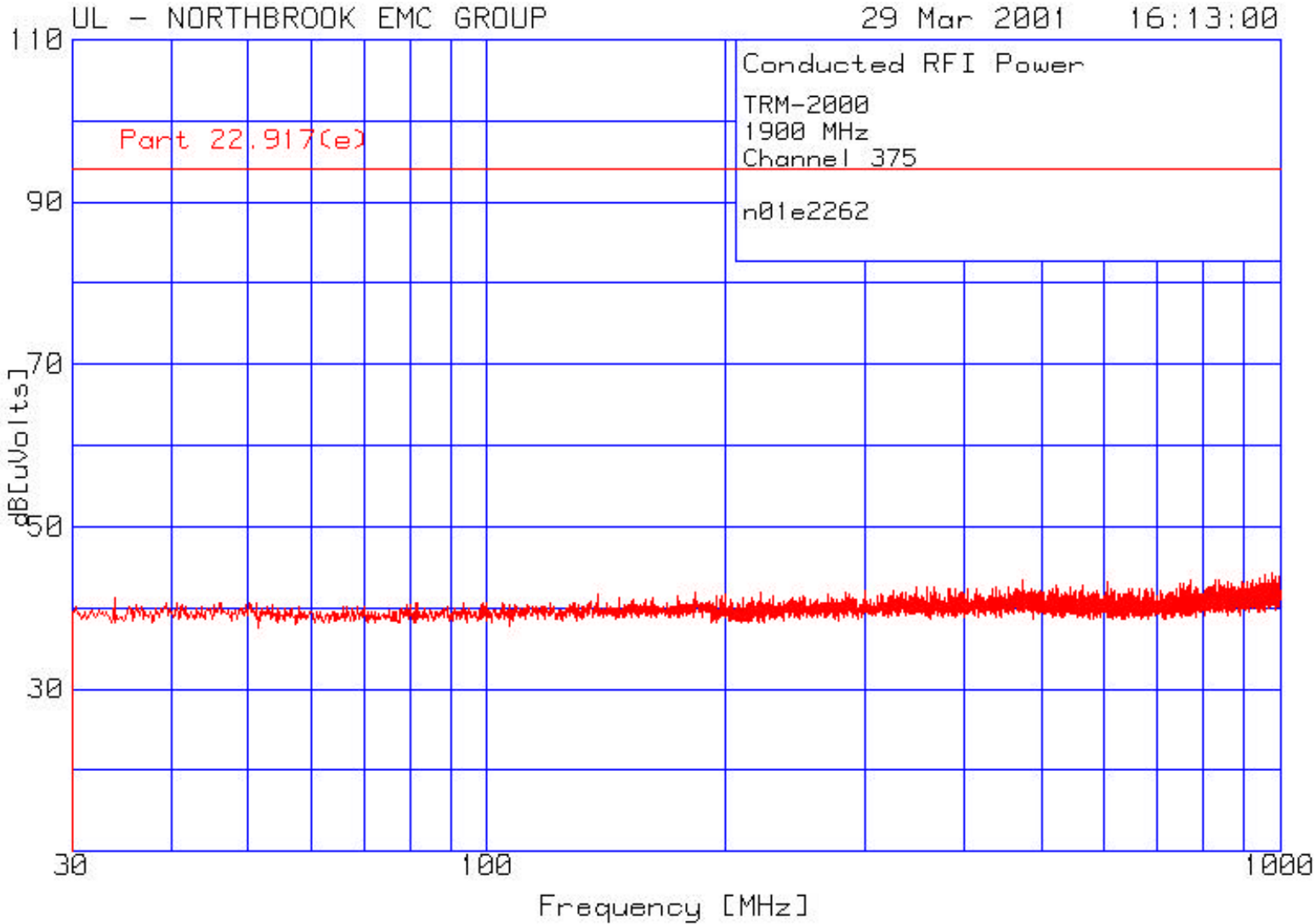
Spurious Emissions at Antenna Terminals  
Channel 0325  
10 to 20 GHz



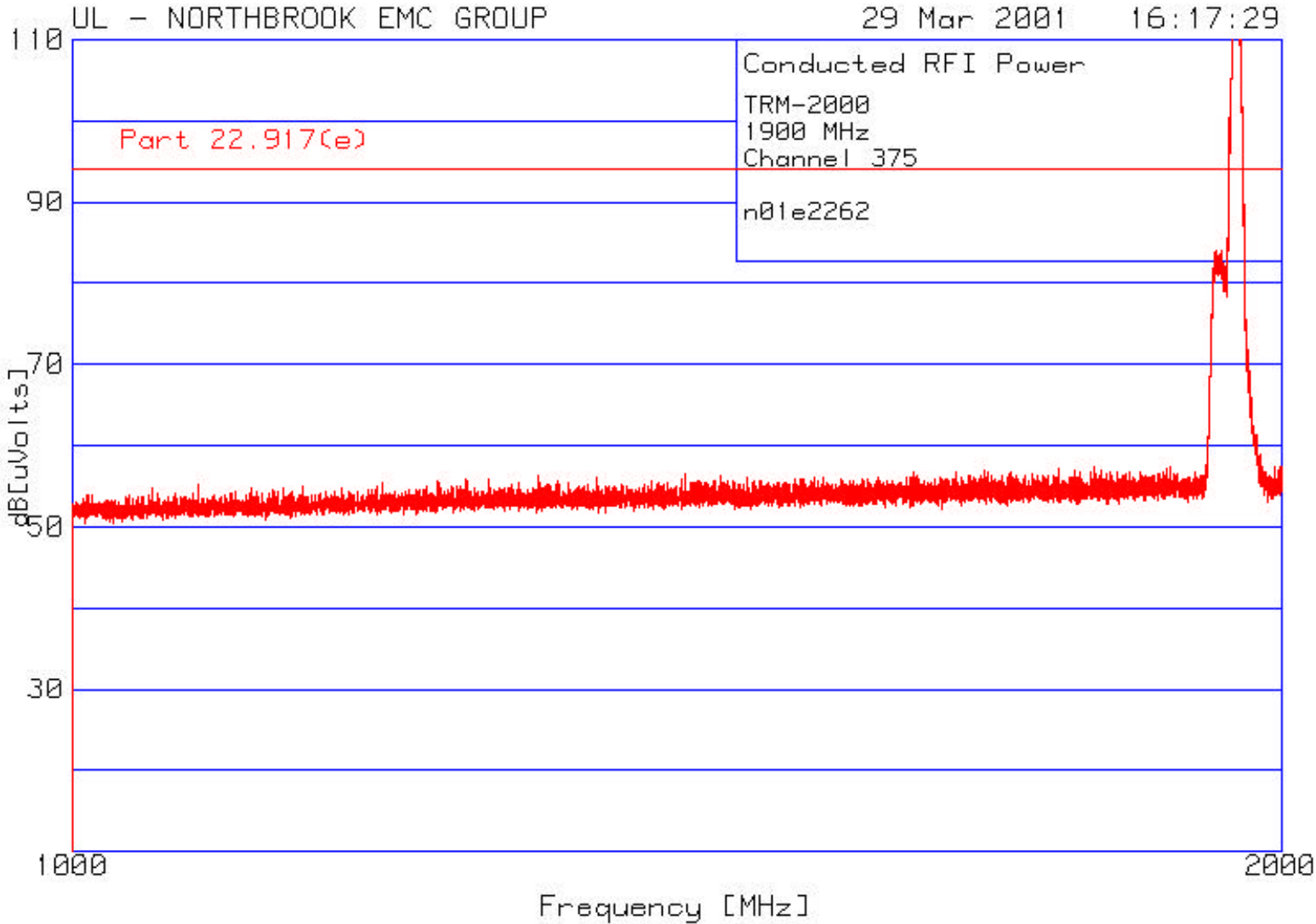
Spurious Emissions at Antenna Terminals  
Channel 0375  
18 to 30 MHz



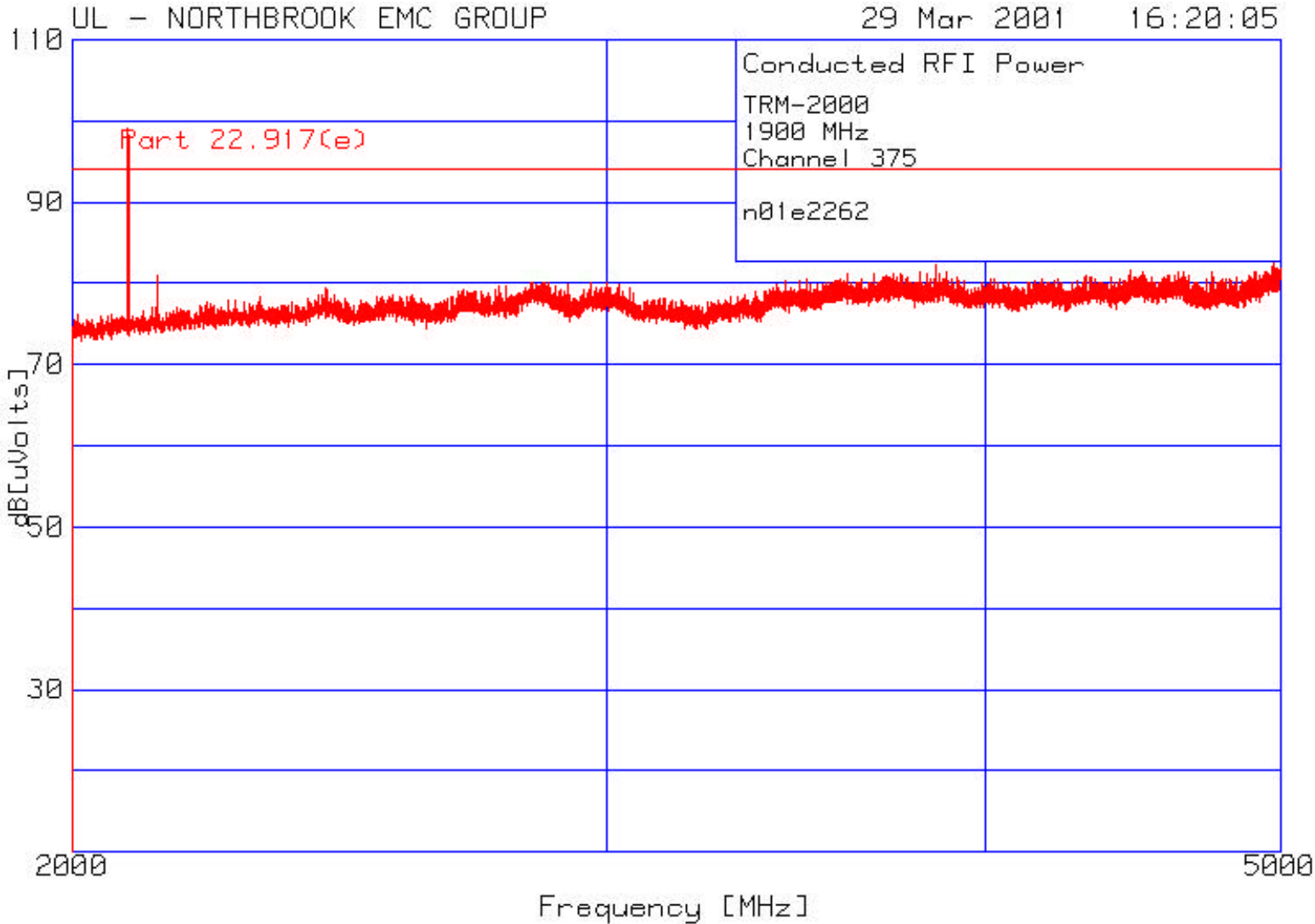
Spurious Emissions at Antenna Terminals  
Channel 0375  
30 MHz to 1 GHz



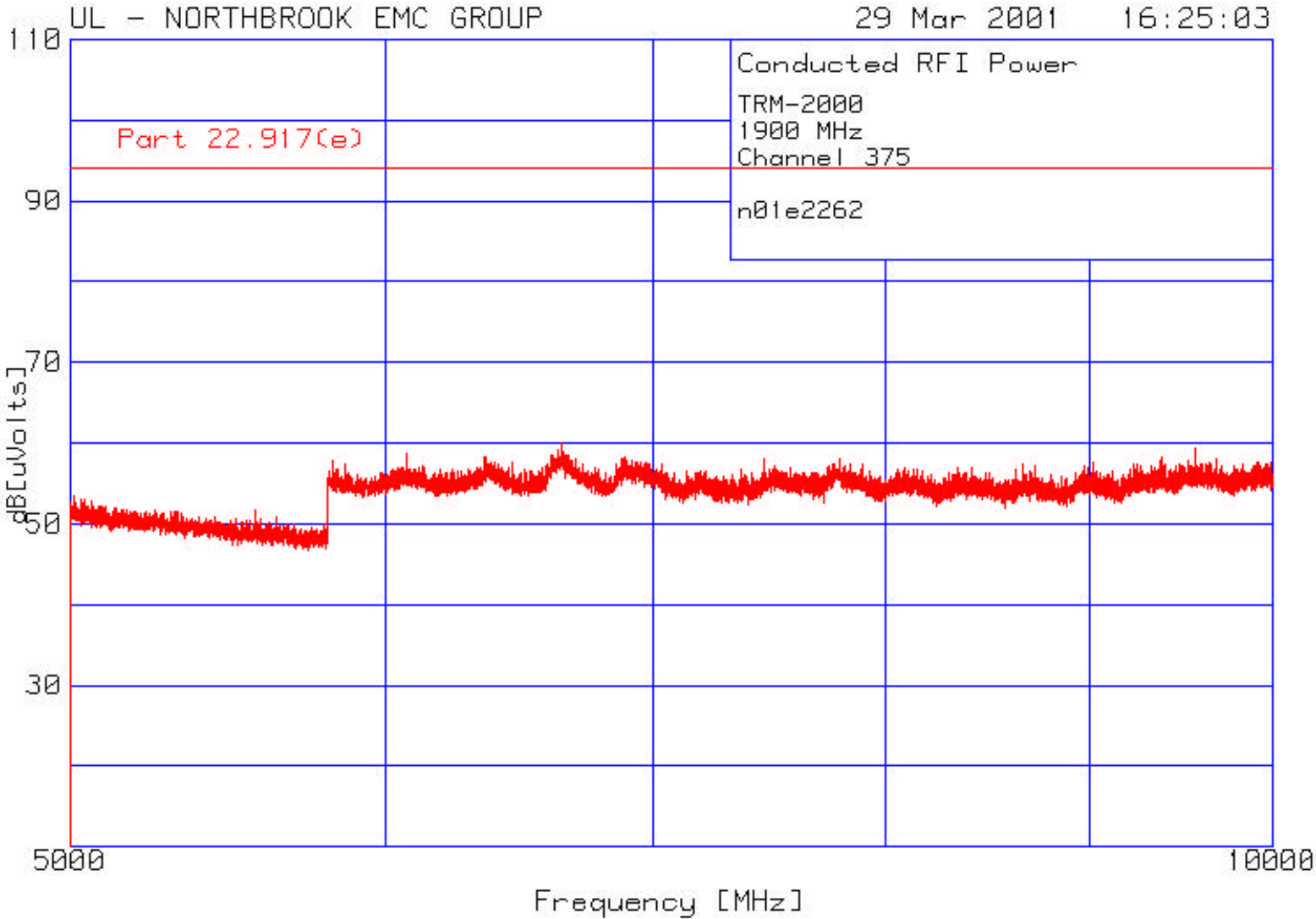
Spurious Emissions at Antenna Terminals  
Channel 0375  
1 to 2 GHz



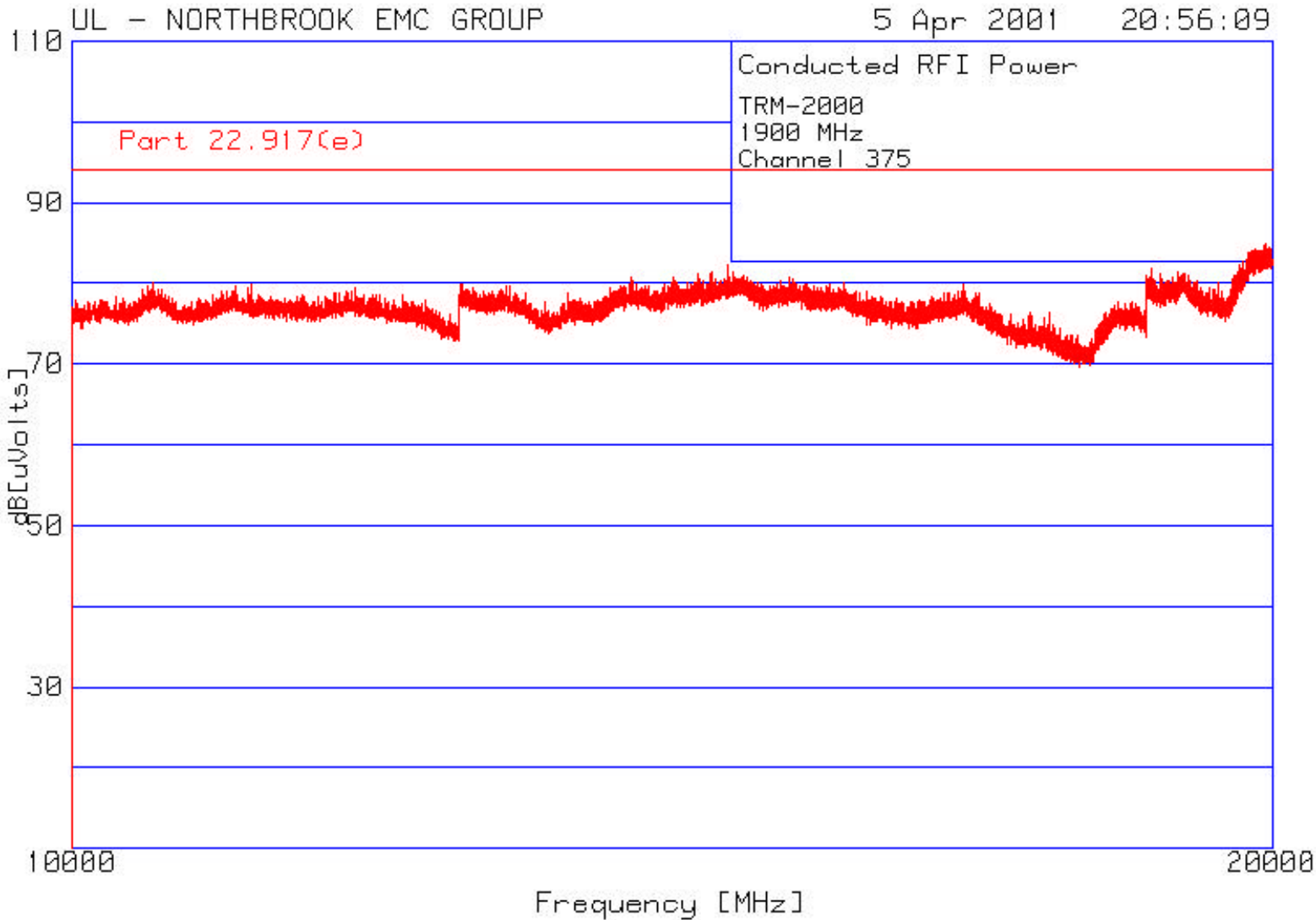
Spurious Emissions at Antenna Terminals  
Channel 0375  
2 to 5 GHz



Spurious Emissions at Antenna Terminals  
Channel 0375  
5 to 10 GHz

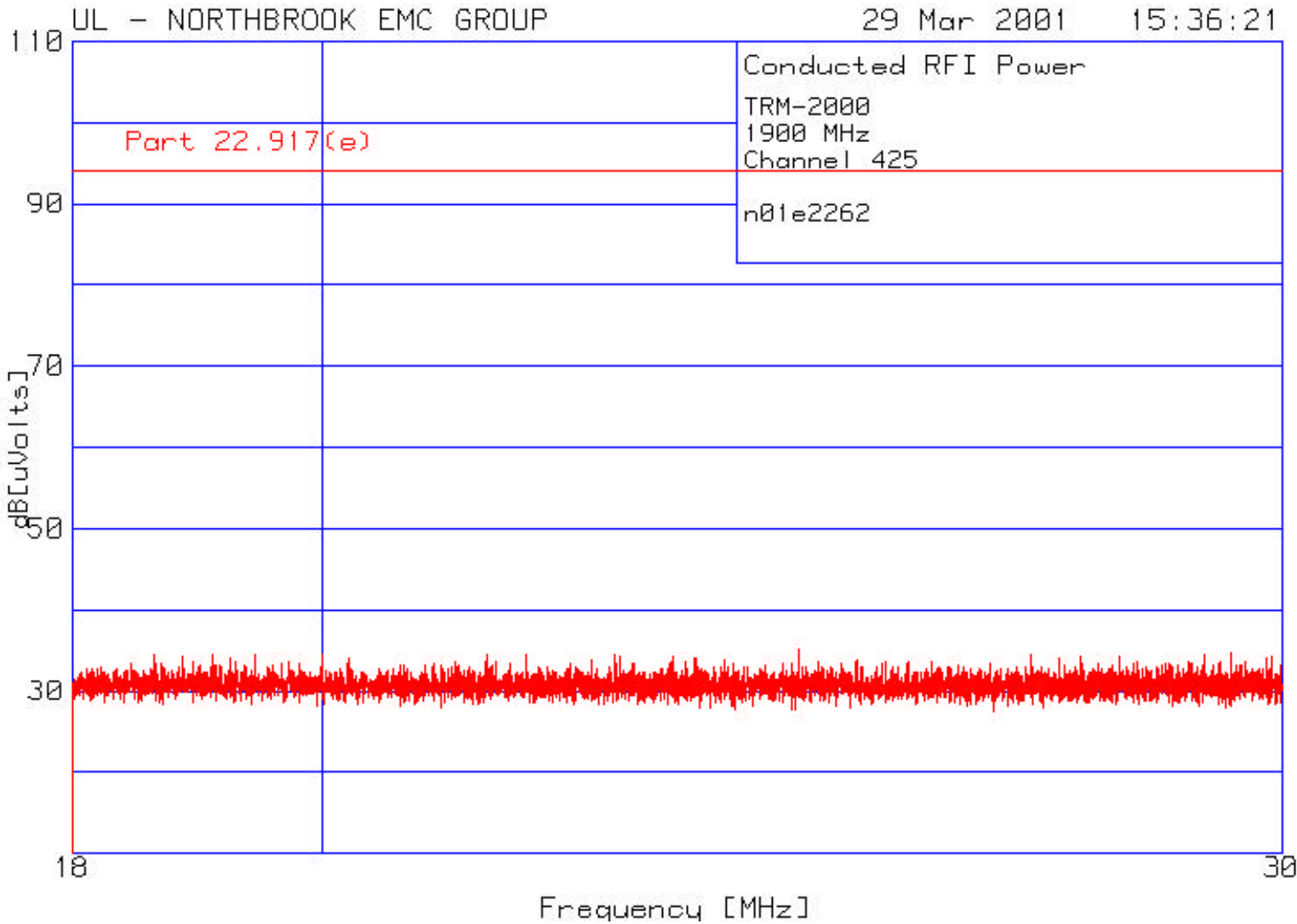


Spurious Emissions at Antenna Terminals  
Channel 0375  
10 to 20 GHz

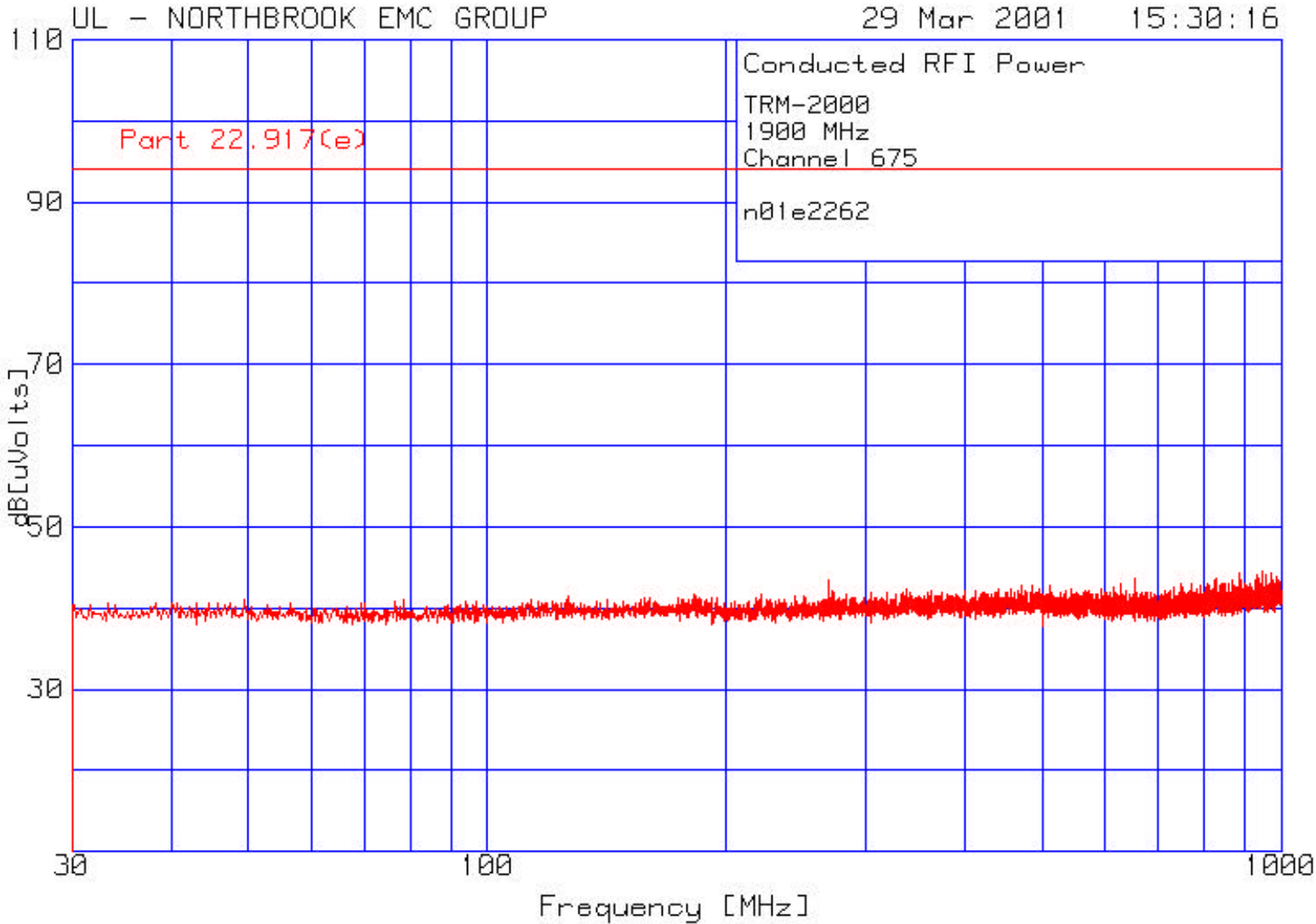




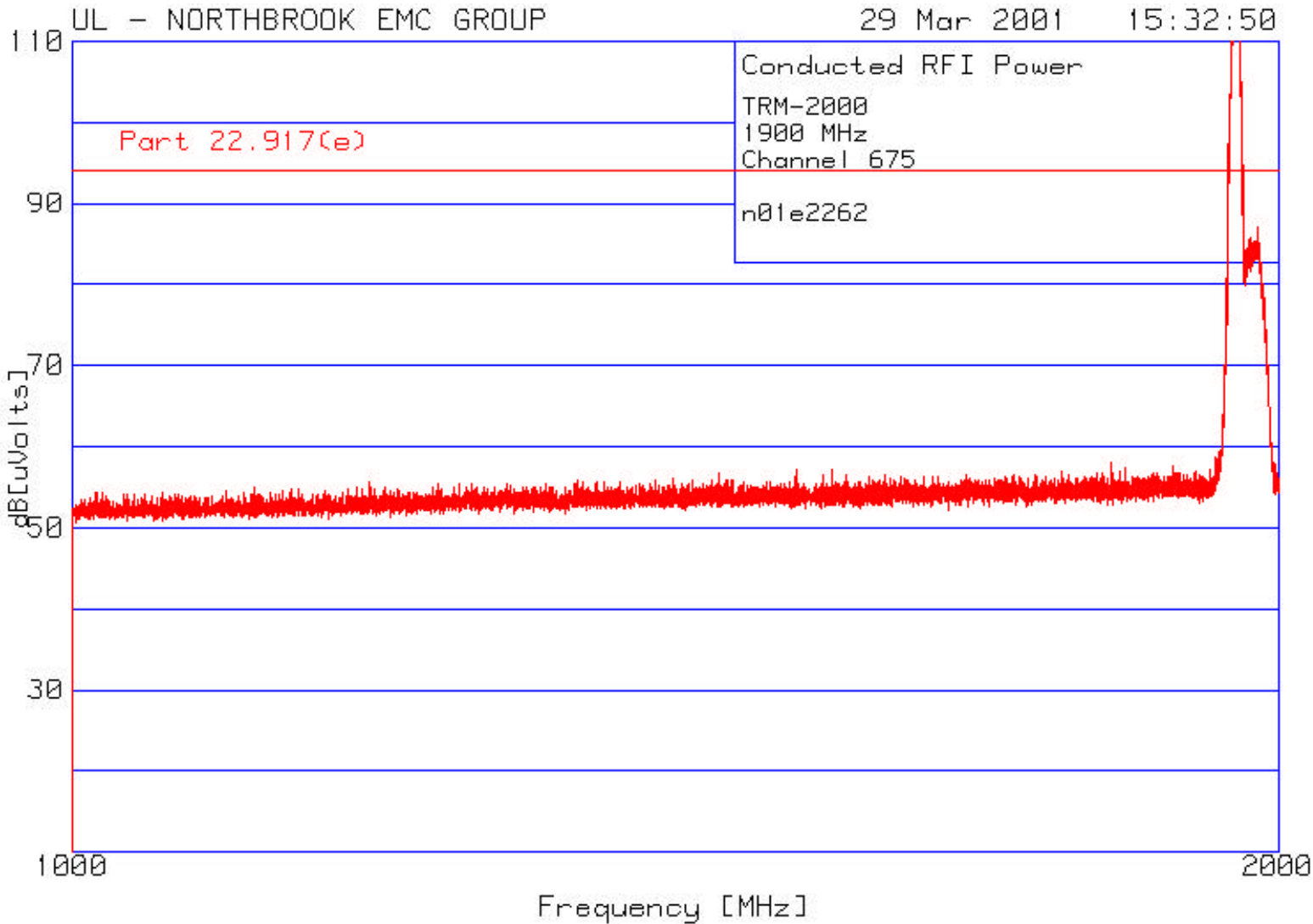
Spurious Emissions at Antenna Terminals  
Channel 0425  
18 to 30 MHz



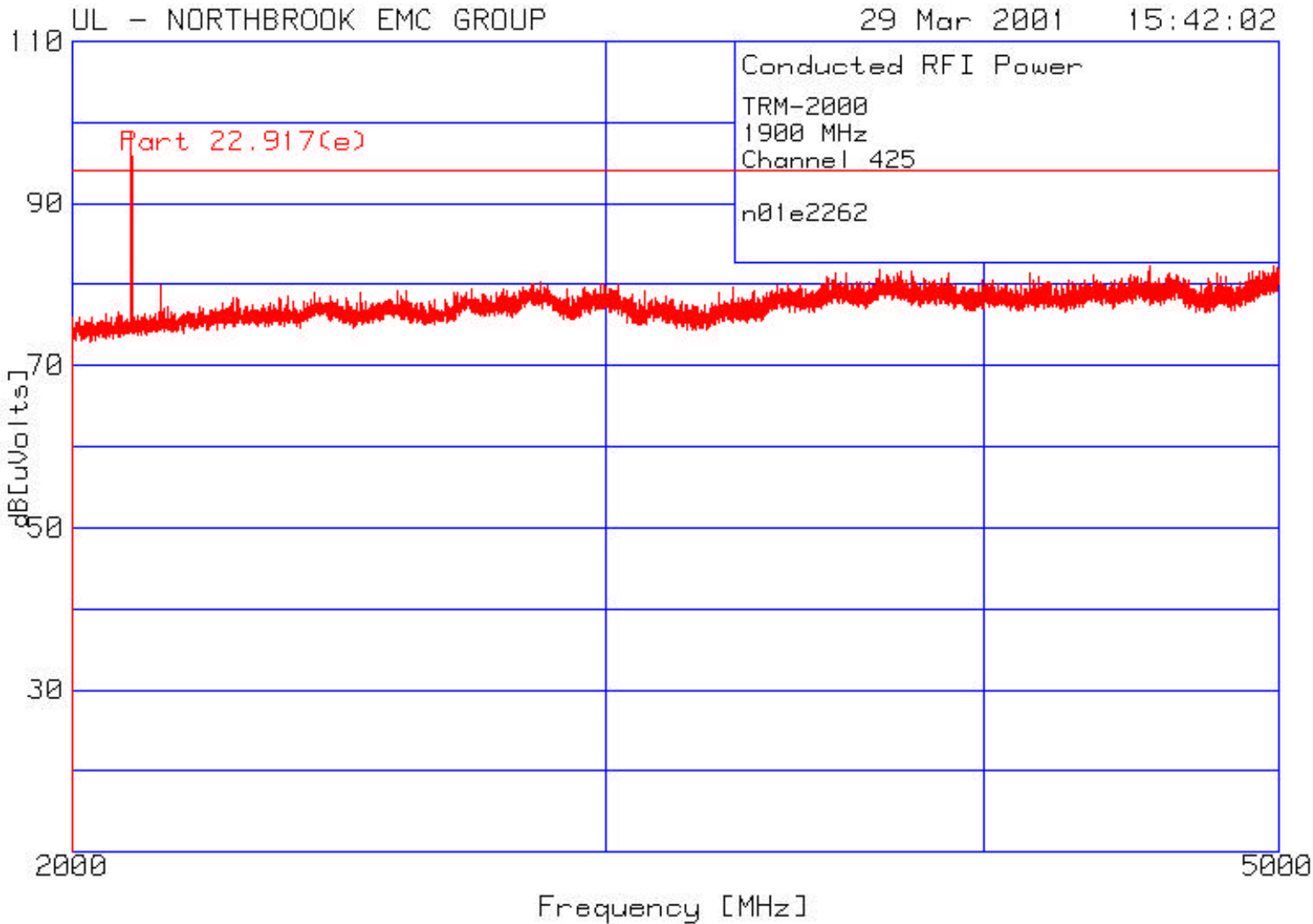
Spurious Emissions at Antenna Terminals  
Channel 0425  
30 MHz to 1 GHz



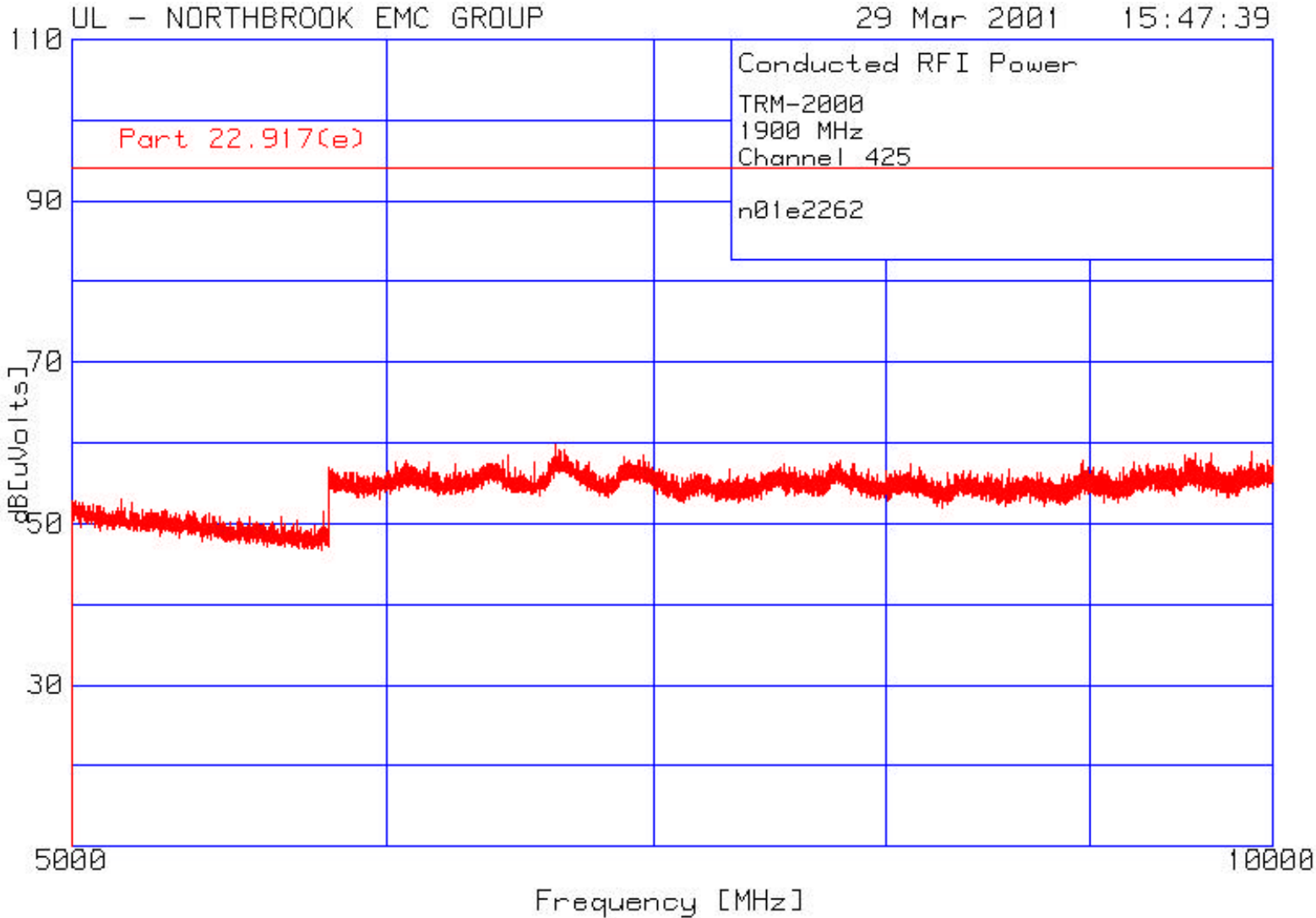
Spurious Emissions at Antenna Terminals  
Channel 0425  
1 to 2 GHz



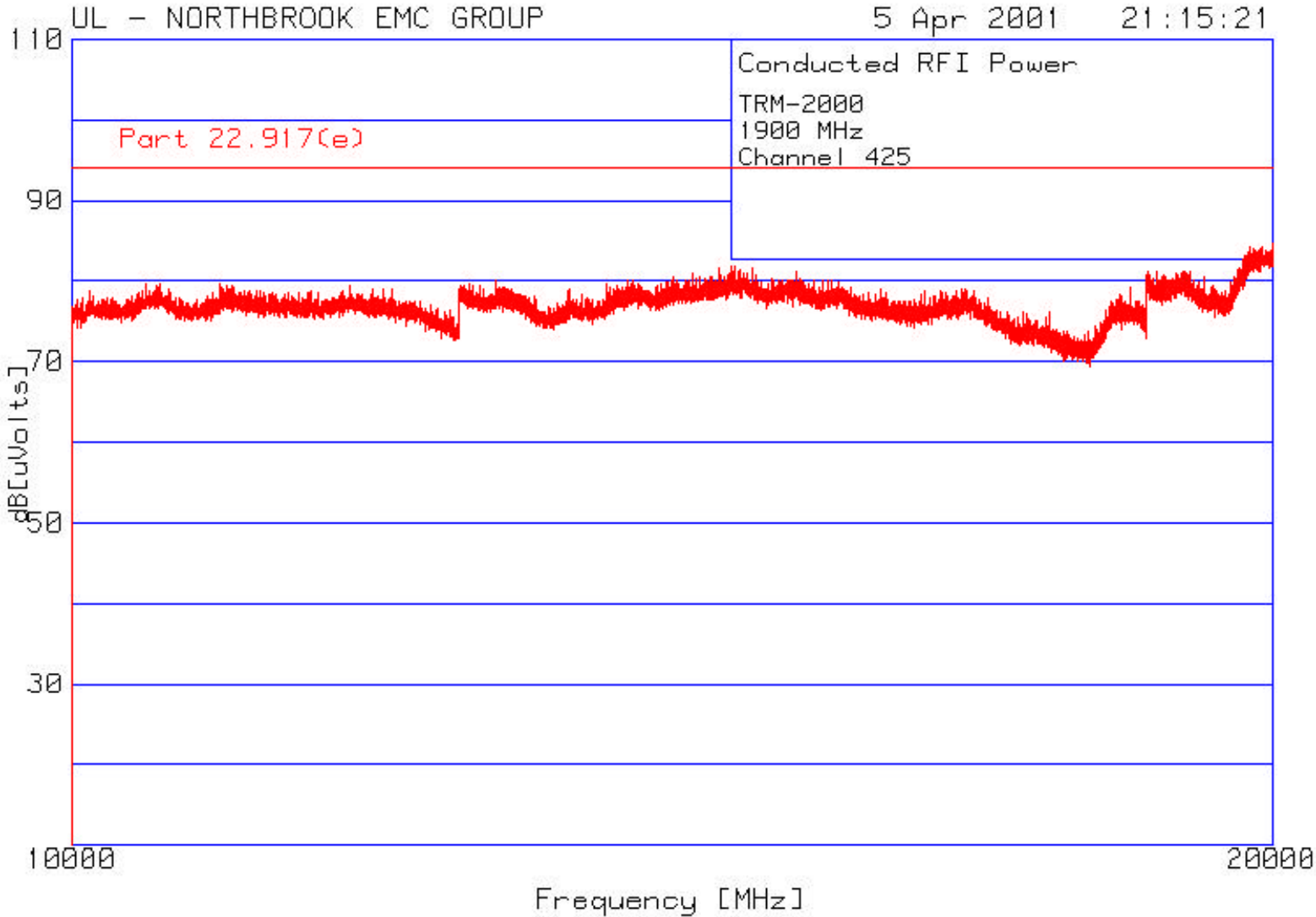
Spurious Emissions at Antenna Terminals  
Channel 0425  
2 to 5 GHz



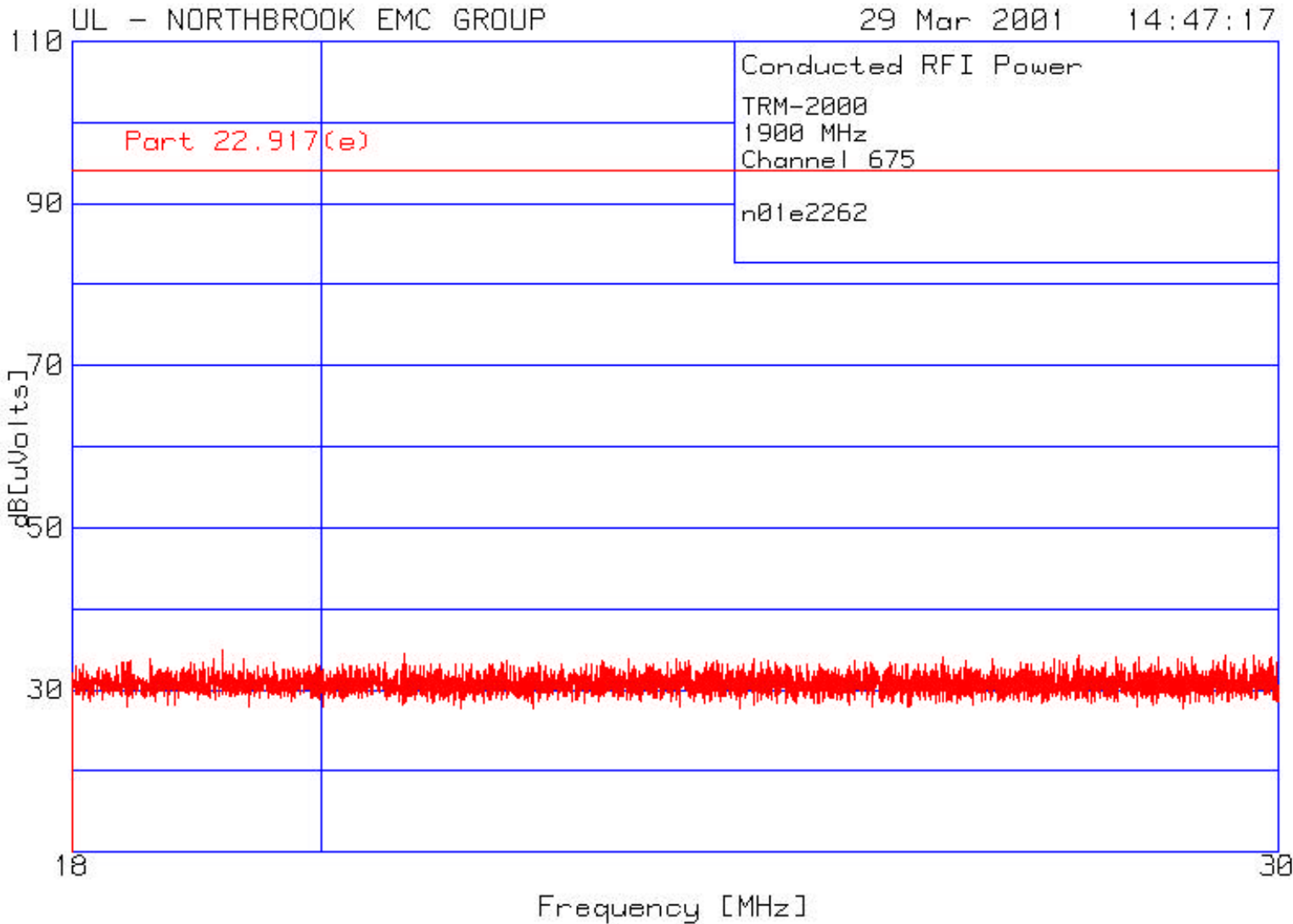
Spurious Emissions at Antenna Terminals  
Channel 0425  
5 to 10 GHz



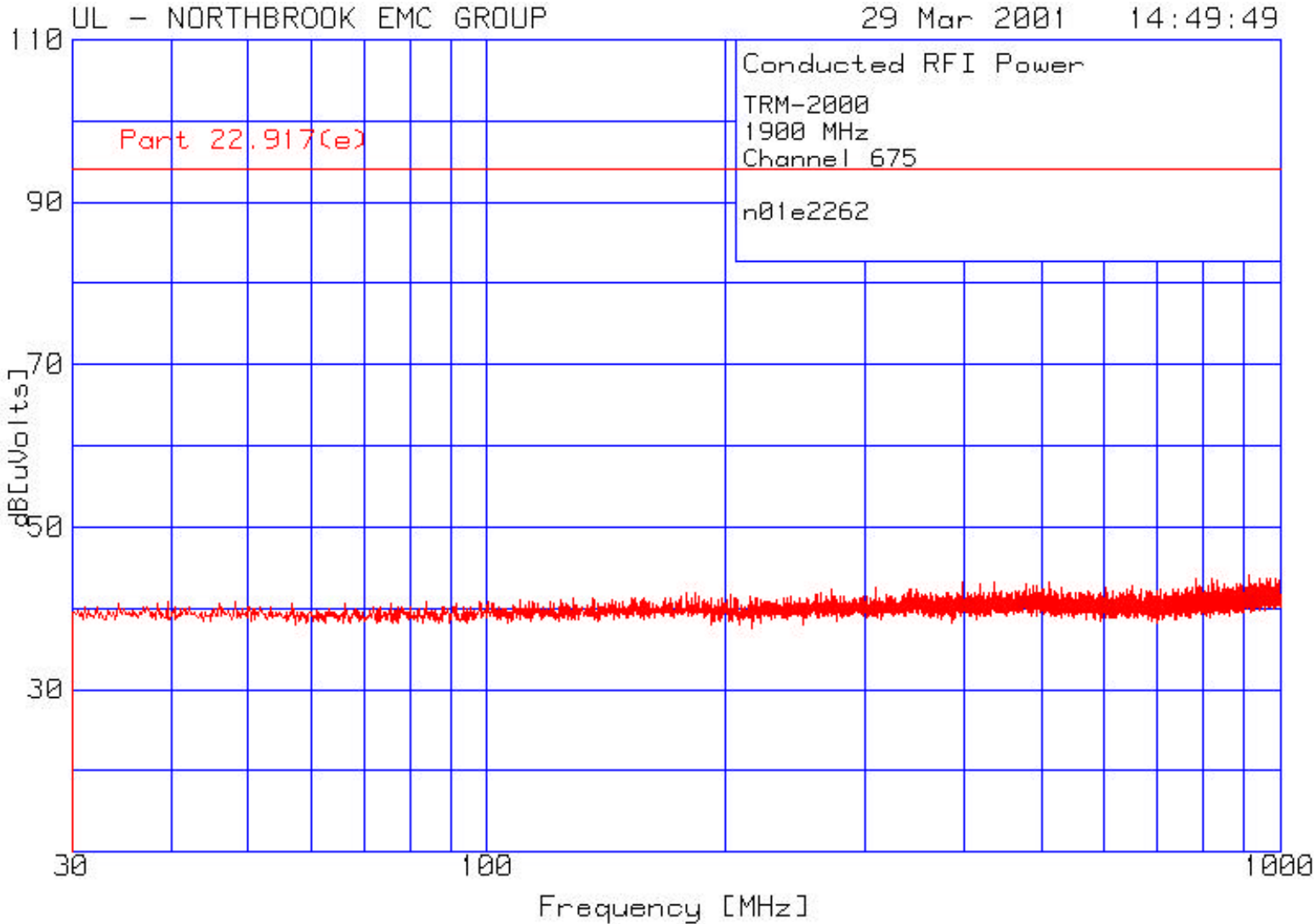
Spurious Emissions at Antenna Terminals  
Channel 0425  
10 to 20 GHz



Spurious Emissions at Antenna Terminals  
Channel 0675  
18 to 30 MHz

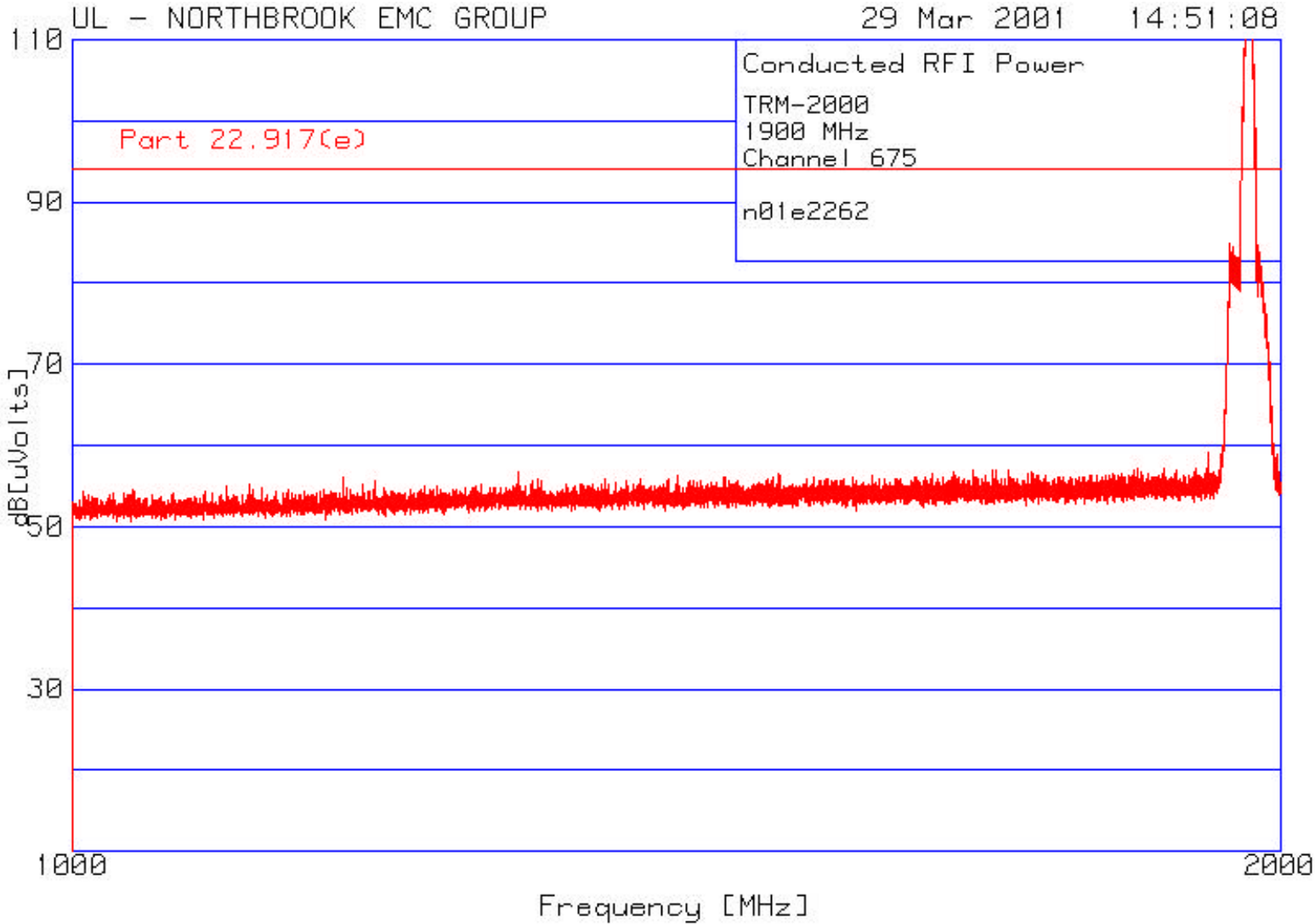


Spurious Emissions at Antenna Terminals  
Channel 0675  
30 MHz to 1 GHz





Spurious Emissions at Antenna Terminals  
Channel 0675  
1 to 2 GHz



Spurious Emissions at Antenna Terminals  
Channel 0675  
2 to 5 GHz

