

## New Gen Mini Workstation Series

Copyright @ 2024-2025 Micro Computer (HK) Tech Limited.

## • Disclaimer

- 1.Thank you for purchasing M5-A2 product.
- 2.The contents mentioned in this disclaimer are related to your safety, legal rights and responsibilities. Please pay attention to any warnings, cautions and attention signs on the instructions and product labels, and install according to the instructions in the instructions.
- 3.The product is relatively complex, and users need to have basic hands-on installation skills and safety knowledge. You should be careful during installation.
- 4.Before using this product, please read the instructions carefully to ensure that the product can be set up correctly. Failure to follow the instructions, warnings, cautions, and attention signs may damage the product or data, and may result in personal or property injury or loss.
- 5.Once you use this product, you are deemed to have carefully read the content requirements of the disclaimer, warning, caution, and attention signs, understood and accepted all the contents. You promise to take full responsibility for the consequences of using this product. You promise to use this product only for legitimate purposes and agree to this statement and any policies and guidelines formulated by MINISFORUM.
- 6.In addition to the warranty terms, MINISFORUM is not legally responsible for damage or injury caused directly or indirectly by using this product, especially those caused by failure to operate in accordance with safety guidelines. Users should follow the instructions mentioned in this statement and all safety guidelines.
- 7.The final interpretation right of this statement belongs to MINISFORUM.

## • Safety Precautions

- 1.Dust, moisture and drastic temperature changes will affect the product life, so please try to avoid placing the product in these places.
- 2.The suitable temperature for the MINI PC and accessories is 0°C ~ 35°C.
- 3.Before you using this product, make sure you leave enough space around the device for ventilation. Please don't block or cover these openings. Never insert objects of any kind into the ventilation openings.
- 4.This equipment should be installed and operated with a minimum distance of 20cm between the radiator and your body.
- 5.When you use the power extension cords, the total current of all connected products should be within the rated current of cables, ensuring stable operation.

## • Maintenance Guideline

- 1.Do not step on the power cord or put anything on your Mini PC.
- 2.Do not spill water or any other liquid over this product.
- 3.There's still some current passing through even when the system is off. To avoid severe damage caused by possible electric shock, plug out all power cables from sockets temporarily before cleaning or moving this product.
- 4.If you encounter the technical problems with the product unplug the power cord and contact a qualified service technician or your retailer.

## • FAQ

- 1.The start-up speed may be slow in the following situations: unexpected restart, BIOS reset, memory bank replacement, and SSD replacement. Generally speaking, the start-up speed will return to normal after one successful power-on and power-off process.
- 2.The core graphics card will occupy a part of the memory as GPU-specific memory.
- 3.All M.2 do not support the SATA protocol and only support NVME SSDs based on PCIe. The U.2 adapter card also only supports NVME U.2 2.5-inch 7mm height hard drives based on the PCIe protocol.
- 4.When running at high load, the CPU temperature of this device can reach up to 94 degrees, which is normal.
- 5.To prevent the SSD from overheating, the two SSDs on the right side of the back support a maximum speed of PCIe4.0x4, but are set to PCIe3.0x4 by default. You can adjust it to PCIe Gen4 speed in OnBoard Setting in BIOS, but it may cause the SSD to overheat, which may result in blue screen, freeze, or data loss.

## 2

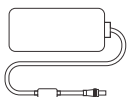
## Conventions Used In This Manual

Note: --- This message contains additional instructions for this item.

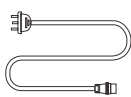
Important! --- This information contains instructions that must be followed.

Warning! --- This message contains information about user safety and product safety.

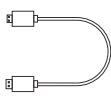
## Package Contents



Ac Power Adapter \*/



Power Cord \*/



HDMI® I Cable \*/



SSD Heatsink \*/



Customized U.2 to M.2 \*/



U.2 Mounting Screw Set \*/



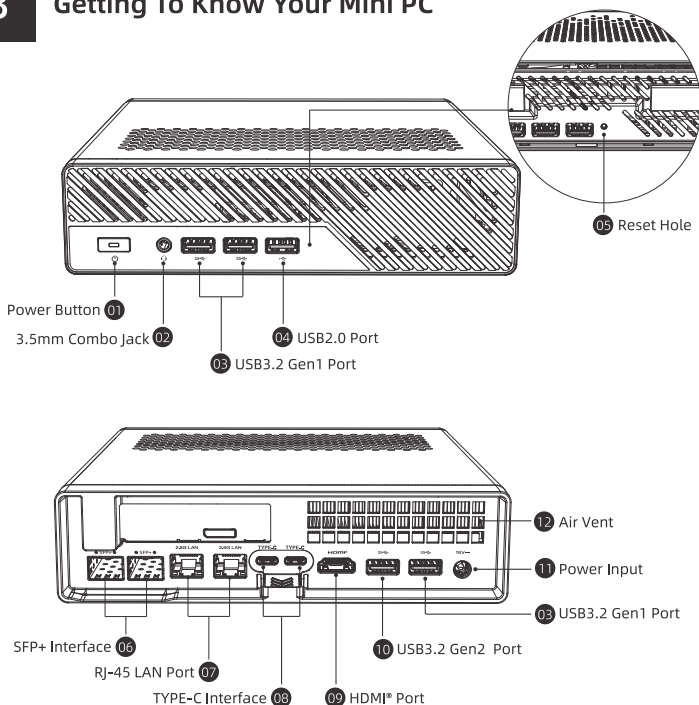
User Manual \*/

### NOTE:

\* The power adapter and other accessories included in the box will vary depending on the model parameter or area purchased

## 3

## Getting To Know Your Mini PC



# Interface

## 01 Power Button

The power button allows you to turn the Mini PC on /off. You can press the power button to put your Mini PC to sleep mode or press it for 10 seconds to force shutdown your Mini PC.

## 02 3.5mm Combo Jack

This connector is used to connect audio output signals to a power amplifier or headphones. You can also use it to connect an external microphone or output signals from audio equipment.

## 03 USB3.2 Gen1 Port

USB3.2 Gen1 (Universal Serial Bus) port provides a transfer rate of up to 5 Gbit/s. It can be connected to keyboards, pointing devices, cameras, hard disks, printers and scanners.

## 04 USB2.0 Port

The USB (Universal Serial Bus) port is compatible with USB2.0 or USB1.1 devices such as keyboards, and printers.

## 05 Reset Hole

Please remove the power source and hold the reset hole for ten seconds to restore the BIOS to its factory default settings.

**Important!** If you encounter certain issues during use, you can first try to resolve them by holding the reset hole.

## 06 SFP+ Interface

SFP+ network interface supports standard SFP+ DAC cable, fiber optic module, or RJ45-SFP+ conversion module. Supports 10Gbps/1Gbps rate.

## 07 RJ-45 LAN Port

This RJ-45 network interface supports standard Ethernet cables and can be connected to a local area network. (Transmission speed 2.5Gbps)

## 08 TYPE-C Interface

This interface supports USB3.2 Gen2 transmission protocol, with a maximum data transmission rate of 10Gbps. Support Alt DP audio and video output, support 5V/3A charging for peripherals power, maximum charging power 15W.

## 09 HDMI® Port

The HDMI® port (High-Definition Multimedia interface) is uncompressed, fully digital audio/video interface that provides a common data connection channel for compatible devices. It can be used to connect external display devices and televisions.

## 10 USB3.2 Gen2 Port

USB3.2 Gen2 (Universal Serial Bus) port provides a transfer rate of up to 10 Gbit/s. It can be connected to keyboards, pointing devices, cameras, hard disks, printers and scanners.

## 11 Power Input

The power adapter can convert AC power to DC power. The converted power provides power to your Mini PC through the power input interface. To avoid damaging your Mini PC, please use the power adapter provided with the product.

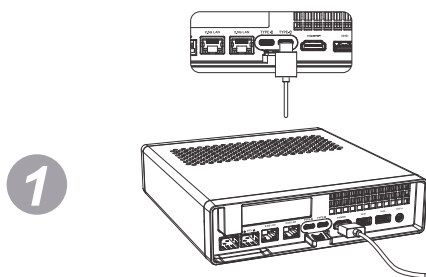
**Warning!** When the power supply is in use, the temperature of the power adapter may rise and become hot. Do not place the power adapter close to your body.

Power adapter: DC 19V

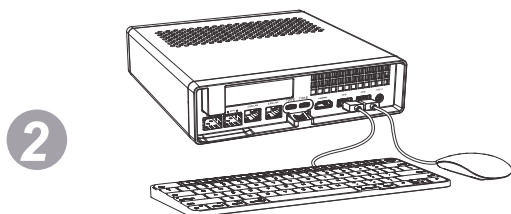
## 12 Air Vent

The air vents allow your Mini PC chassis to expel hot air out.

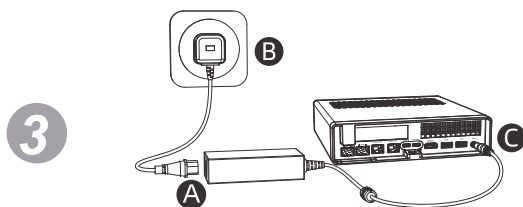
**Important!** For optimum heat dissipation and air ventilation, ensure that the air vents are free from obstructions (such as Paper, books, clothes, transmission lines).



Connect the display to the Mini PC's HDMI® port/Type-C port.



Connect the keyboard and mouse.



Connect the provided power adapter to your Mini PC.



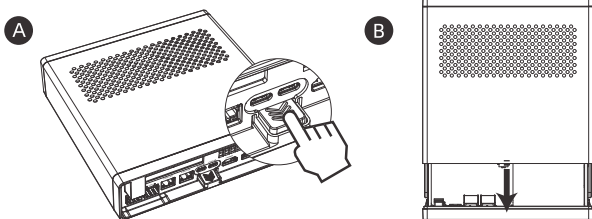
Turn on the power and start the Mini PC.

If the Mini PC is frozen or slow to respond, press and hold the power button at least for 10 seconds to force it shutdown.

To put your Mini PC on Sleep mode, press the Power button once.

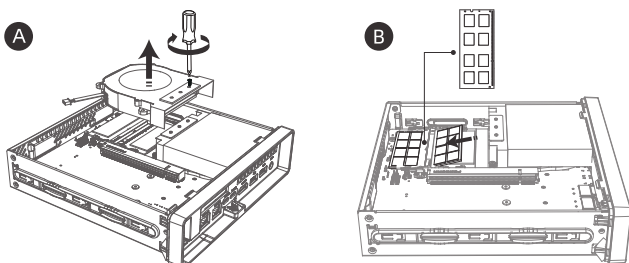
# Installation Guide

- 1 While pressing the button, pull out the motherboard case.



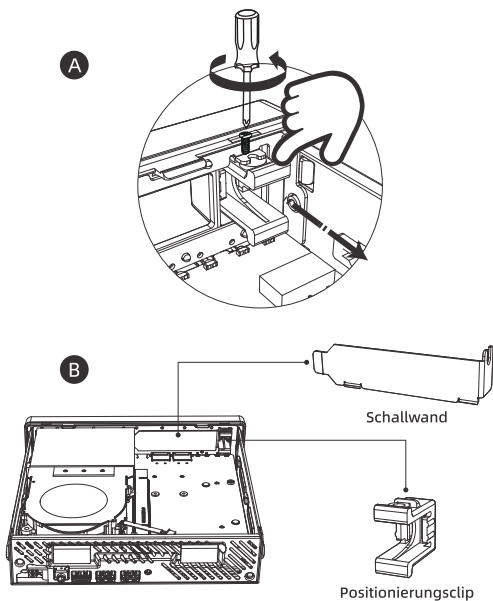
## DIY DDR

- 2 First remove the radiator, and then insert the memory into the memory slot as shown.

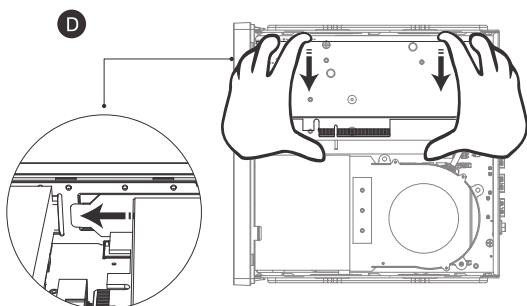
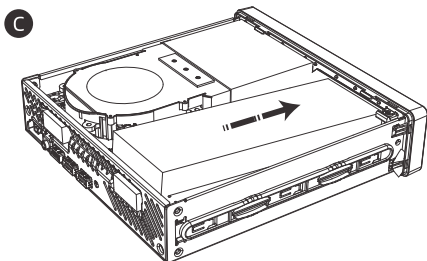


## DIY PCIE Expansion Card

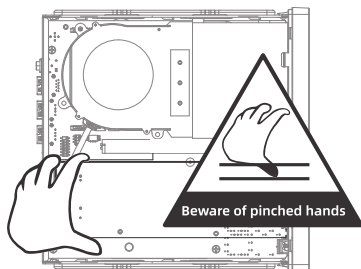
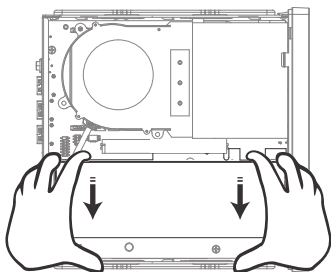
- 3 First use a tool to unscrew the positioning clamp screw, press the positioning clamp to take it out, and remove the baffle.



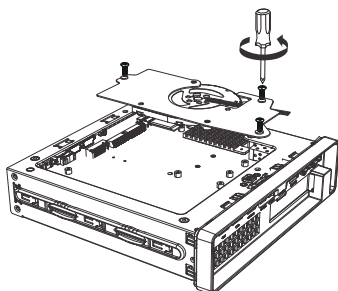
- 4 Insert the expansion card into the motherboard slot in an oblique direction, and insert the expansion card parallel into the PCIe slot with both hands.  
**Note:** Only half-height single-slot PCIe expansion cards are supported



**Warn!** The correct way to disassemble the expansion card is as shown in the figure, and be careful not to pinch your hands.

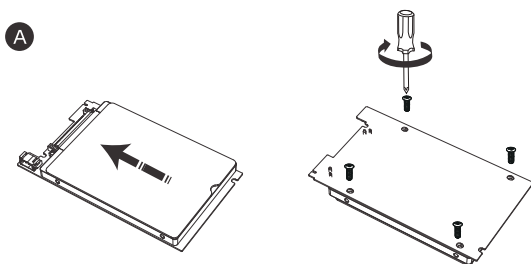


- 5 Turn it over and use tools to remove the heat dissipation bracket.

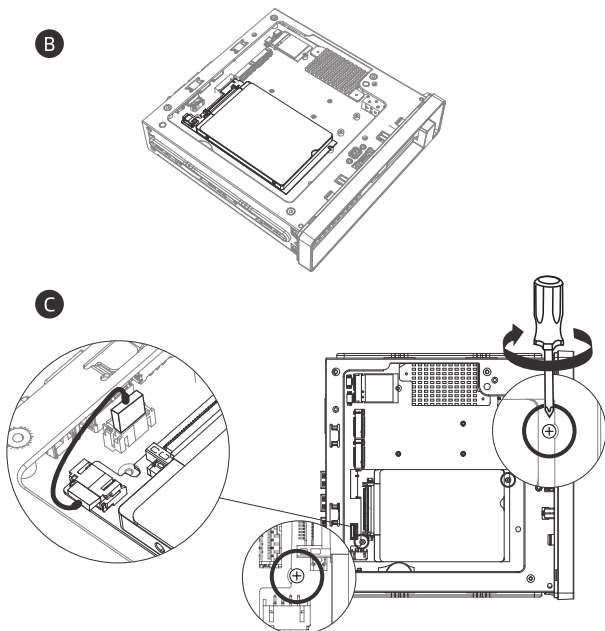


## DIY Customized U.2 To M.2

- 6 Assemble the U.2 hard drive to the U.2 to custom M.2 adapter card and lock the screws.

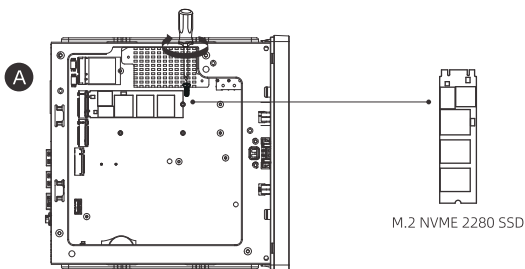


- 7 Insert the U.2 to private M.2 adapter card into the M.2 slot, align it and tighten the fixing screws, and finally connect the power cable.

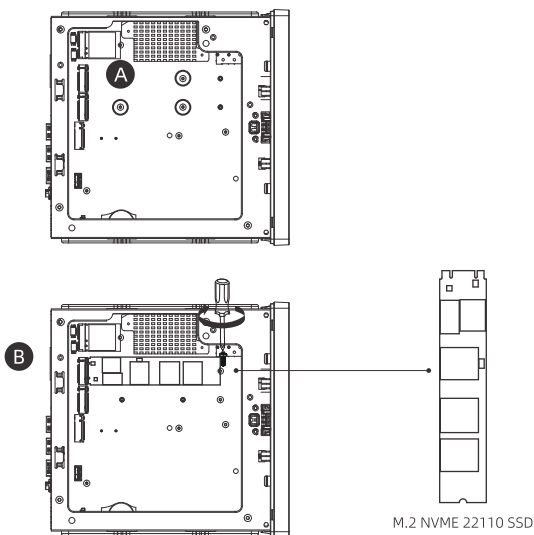




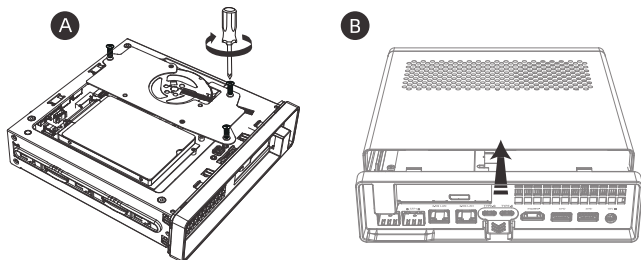
- 8 Insert the SSD card into the card slot at an angle and secure it with screws.



- 9 **Note:** To installation 22110 SSD, you need to use a tool to unscrew the hexagonal screw post first.



- 10 Re-tighten the screws of the heat dissipation bracket and install the motherboard case into the chassis.



## FCC STATEMENT

This device complies with Part 15 of the FCC Rules. Operation is subject to the following two conditions:

- (1) This device may not cause harmful interference, and
- (2) This device must accept any interference received, including interference that may cause undesired operation.

This equipment has been tested and found to comply with the limits for a Class B digital device, pursuant to part 15 of the FCC Rules. These limits are designed to provide reasonable protection against harmful interference in a residential installation. This equipment generates, uses and can radiate radio frequency energy and, if not installed and used in accordance with the instructions, may cause harmful interference to radiocommunications. However, there is no guarantee that interference will not occur in a particular installation. If this equipment does cause harmful interference to radio or television reception, which can be determined by turning the equipment off and on, the user is encouraged to try to correct the interference by one or more of the following measures:

- Reorient or relocate the receiving antenna.
- Increase the separation between the equipment and receiver.
- Connect the equipment into an outlet on a circuit different from that to which the receiver is connected.
- Consult the dealer or an experienced radio/ TV technician for help.

This device complies with part 15 of the FCC rules. Operation is subject to the following two conditions

- (1) this device may not cause harmful interference, and
- (2) this device must accept any interference received, including interference that may cause undesired operation.

This equipment complies with FCC radiation exposure limits set forth for an uncontrolled environment.

This equipment should be installed and operated with minimum distance 20cm between the radiator & your body.

Transmitters in the 5.925-7.125 GHz band are prohibited from operating to control or communicate with unmanned aircraft systems.

FCC regulations restrict the operation of this device to indoor use only. It is prohibited on oil platforms, cars, trains, boats, and aircraft, except it is permitted in large aircraft while flying above 10,000 feet.

This product is only suitable for indoor use only.



#### 联系信息

生产商： 深圳市美高电子设备有限公司  
网址： <https://www.miniscloud.com>  
地址： 深圳市龙岗区平湖街道禾花社区富康路6号深业物流平湖中心厂房B（宝能智创谷B栋）201、206-208、217-222  
电话： 0755-84659450

#### 售后技术支持

网址： <https://www.minisforum.com/new/support>  
电话： 400-090-9901

#### Contact information

Manufacturer: Micro Computer (HK) Tech Limited  
Website: <https://www.miniscloud.com>  
Address: FLAT/RM 18, 28/F, Shui On Centre, 6-8 Harbour Road, Waterfront Wan Chai , Hong Kong  
TEL: 852-23860910

#### Online Technical Support

Website: <https://www.minisforum.com/new/support>  
Email : [support@minisforum.com](mailto:support@minisforum.com)