

FC41D

User Manual

Wi-Fi&Bluetooth Module Series

Version: 1.0.0

Date: 2021-11-17

Status: Preliminary

Our aim is to provide customers with timely and comprehensive service. For any assistance, please contact our company headquarters:

Quectel Wireless Solutions Co., Ltd.

Building 5, Shanghai Business Park Phase III (Area B), No.1016 Tianlin Road, Minhang District, Shanghai 200233, China

Tel: +86 21 5108 6236

Email: info@quectel.com

Or our local office. For more information, please visit:

<http://www.quectel.com/support/sales.htm>.

For technical support, or to report documentation errors, please visit:

<http://www.quectel.com/support/technical.htm>

Or email to support@quectel.com.

General Notes

Quectel offers the information as a service to its customers. The information provided is based upon customers' requirements. Quectel makes every effort to ensure the quality of the information it makes available. Quectel does not make any warranty as to the information contained herein, and does not accept any liability for any injury, loss or damage of any kind incurred by use of or reliance upon the information. All information supplied herein is subject to change without prior notice.

Disclaimer

While Quectel has made efforts to ensure that the functions and features under development are free from errors, it is possible that these functions and features could contain errors, inaccuracies and omissions. Unless otherwise provided by valid agreement, Quectel makes no warranties of any kind, implied or express, with respect to the use of features and functions under development. To the maximum extent permitted by law, Quectel excludes all liability for any loss or damage suffered in connection with the use of the functions and features under development, regardless of whether such loss or damage may have been foreseeable.

Copyright

The information contained here is proprietary technical information of Quectel wireless solutions co., ltd. Transmitting, reproducing, disseminating and editing this document as well as using the content without permission are forbidden. Offenders will be held liable for payment of damages. All rights are reserved in the event of a patent grant or registration of a utility model or design.

Copyright © Quectel Wireless Solutions Co., Ltd. 2021. All rights reserved.

Safety Information

The following safety precautions must be observed during all phases of operation, such as usage, service or repair of any cellular terminal or mobile incorporating the module. Manufacturers of the cellular terminal should notify users and operating personnel of the following safety information by incorporating these guidelines into all manuals of the product. Otherwise, Quectel assumes no liability for customers' failure to comply with these precautions.



Full attention must be paid to driving at all times in order to reduce the risk of an accident. Using a mobile while driving (even with a handsfree kit) causes distraction and can lead to an accident. Please comply with laws and regulations restricting the use of wireless devices while driving.



Switch off the cellular terminal or mobile before boarding an aircraft. The operation of wireless appliances in an aircraft is forbidden to prevent interference with communication systems. If there is an Airplane Mode, it should be enabled prior to boarding an aircraft. Please consult the airline staff for more restrictions on the use of wireless devices on an aircraft.



Wireless devices may cause interference on sensitive medical equipment, so please be aware of the restrictions on the use of wireless devices when in hospitals, clinics or other healthcare facilities.



Cellular terminals or mobiles operating over radio signal and cellular network cannot be guaranteed to connect in certain conditions, such as when the mobile bill is unpaid or the (U)SIM card is invalid. When emergent help is needed in such conditions, use emergency call if the device supports it. In order to make or receive a call, the cellular terminal or mobile must be switched on in a service area with adequate cellular signal strength. In an emergency, the device with emergency call function cannot be used as the only contact method considering network connection cannot be guaranteed under all circumstances.



The cellular terminal or mobile contains a transceiver. When it is ON, it receives and transmits radio frequency signals. RF interference can occur if it is used close to TV sets, radios, computers or other electric equipment.



In locations with explosive or potentially explosive atmospheres, obey all posted signs and turn off wireless devices such as mobile phone or other cellular terminals. Areas with explosive or potentially explosive atmospheres include fuelling areas, below decks on boats, fuel or chemical transfer or storage facilities, and areas where the air contains chemicals or particles such as grain, dust or metal powders.

About the Document

Revision History

Version	Date	Author	Description
-	2021-11-17	Soni RAO/ Michael DU	Initial

Contents

Safety Information.....	2
About the Document.....	3
Contents.....	4
Table Index.....	6
Figure Index.....	7
1 Introduction	8
1.1. Special Mark.....	8
2 Product Concept	9
2.1. General Description.....	9
2.2. Key Features	9
2.3. Evaluation Board	11
3 Application Interfaces.....	12
3.1. General Description.....	12
3.2. Pin Assignment.....	13
3.3. Pin Description	14
3.4. Power Supply Design	17
3.4.1. Pin Description.....	17
3.5. Reset the module	18
3.6. Wireless Connection Interfaces.....	19
3.6.1. UART	19
3.6.2. SPI.....	20
3.7. I2C Interface	22
3.8. PWM Interface*	22
3.9. WAKEUP Interface	23
3.10. Network Status Indication.....	23
3.11. GPIO Interfaces.....	24
3.12. ADC Interface*.....	24
3.13. RF Antenna Interface	25
3.13.1. Operating Frequency	25
3.13.2. RF Antenna Pin Description.....	26
3.13.3. On Board PCB Antenna.....	26
3.13.4. IPEX Connector	27
3.13.5. RF Antenna Reference Design	27
3.13.6. Reference Design of RF Layout.....	28
3.13.7. Antenna Cable and Antenna Requirements	30
3.14. Recommended RF Connector for Antenna Installation	31
4 Reliability, Radio and Electrical Characteristics	34
4.1. General Description.....	34
4.2. Electrical Characteristics	34

4.3.	I/O Characteristics	35
4.4.	Current Consumption	35
4.5.	RF Performances	37
4.5.1.	Wi-Fi Performances	37
4.5.2.	BLE Performances.....	37
4.6.	ESD Performances.....	38
5	Mechanical Dimensions.....	39
5.1.	Mechanical Dimensions of the Module	39
5.2.	Recommended Footprint	41
6	Storage, Manufacturing and Packaging	42
6.1.	Storage.....	42
6.2.	Manufacturing and Soldering.....	43
6.3.	Packaging.....	44
7	Appendix References.....	46

Table Index

Table 1: Special Mark.....	8
Table 2: Key Features	9
Table 3: I/O Parameters Description	14
Table 4: Pin Description.....	14
Table 5: Definition of Power Supply and GND Pins	17
Table 6: Definition of Power Supply and GND Pins	18
Table 7: UART Pin Definition.....	19
Table 8: SPI Pin Definition.....	21
Table 9: SPI Timing Parameters	21
Table 10: I2C Pin Definition.....	22
Table 11: PWM Pin Definition.....	22
Table 12: Pin Definition of WAKEUP Interfaces.....	23
Table 13: NET_STATUS Pin Definition	23
Table 14: GPIO Pin Definition	24
Table 15: ADC Pin Definition.....	25
Table 16: ADC Features	25
Table 17: FC41D Operating Frequency	25
Table 18: Antenna Pin Definition	26
Table 19: On Board PCB Antenna Characteristics*	26
Table 20: Antenna Cable Requirement	31
Table 21: Antenna Requirement.....	31
Table 22: Absolute Maximum Ratings.....	34
Table 23: Recommended Operating Conditions	35
Table 24: General DC Electrical Characteristics	35
Table 25: Power Consumption of the Module (Low Power Modes, unit: mA).....	35
Table 26: 2.4 GHz Conducted Output Power	37
Table 27: 2.4 GHz Conducted Receive Sensitivity.....	37
Table 28: BLE Conducted Mode Output Power / Receive Sensitivity	37
Table 29: ESD Characteristics (Temperature: 25 °C, Humidity: 45 %).....	38
Table 30: Recommended Thermal Profile Parameters	44
Table 31: Reference Documents	46
Table 32: Terms and Abbreviations.....	46

Figure Index

Figure 1: Pin Assignment (Top View)	13
Figure 2: VBAT Reference Circuit	17
Figure 3: Reference Circuit of CEN by Using Driving Circuit	18
Figure 4: Reference Circuit of CEN by Using Button	18
Figure 5: Timing of Resetting Module.....	19
Figure 6: Main UART Connection Diagram.....	20
Figure 7: Debug UART Reference Crcuit.....	20
Figure 8: SPI Timing.....	21
Figure 9: Reference Circuit of the Network Status Indicator	24
Figure 10: IPEX Connector Size.....	27
Figure 11: RF Antenna Reference Design	28
Figure 12: keepout areas on the motherboard	28
Figure 13: Microstrip Design on a 2-layer PCB	29
Figure 14: Coplanar Waveguide Design on a 2-layer PCB.....	29
Figure 15: Coplanar Waveguide Design on a 4-layer PCB (Layer 3 as Reference Ground).....	29
Figure 16: Coplanar Waveguide Design on a 4-layer PCB (Layer 4 as Reference Ground).....	30
Figure 17: U.FL-R-SMT Connector (Unit: mm).....	32
Figure 18: U. FL-LP Series Connectors	32
Figure 19: Connectors and Connector Combinations (Unit: mm)	33
Figure 20: Module Top and Side Dimensions	39
Figure 21: Module Dimension (Bottom View).....	40
Figure 22: Recommeded Footprint (Top View)	41
Figure 23: Recommended Reflow Soldering Thermal Profile	43
Figure 24: Tap Specification	45
Figure 25: Reel Specification.....	45

1 Introduction

This document defines the FC41D module and describes its air interface and hardware interfaces which are connected with your application.

With this document, you can quickly understand module interface specifications, electrical and mechanical details, as well as other related information of the module. The document, coupled with application notes and user guides, makes it easy to design and set up mobile applications with the module.

1.1. Special Mark

Table 1: Special Mark

Mark	Definition
*	When an asterisk (*) is used after a function, feature, interface, pin name, AT command, or argument, it indicates that the function, feature, interface, pin name, AT command, or argument is under development and currently not supported, unless otherwise specified.

2 Product Concept

2.1. General Description

FC41D is a low-power, cost-effective Bluetooth 5.2 and Wi-Fi 802.11b/g/n module, which integrates the hardware and software resources required for Wi-Fi and Bluetooth applications. It can support AP and STA of Wi-Fi connection, and low-power Bluetooth connection. It is very suitable for low flow control and data acquisition applications such as home intelligent terminal, industrial application and so on.

FC41D module has a built-in Wi-Fi and bluetooth ultra-high integration microcontroller, which provides the necessary ability to calculate and stable Wi-Fi and Bluetooth connectivity for IoT data terminals. It includes:

- 120 MHz ARM kernel
- 256K Byte RAM
- 2M Byte Flash
- A controller that complies with IEEE 802.11 b/g/n and Bluetooth 5.2 standards

With a compact profile of 18.0 mm × 20.0 mm × 2.2 mm, FC41D is powered by a single 3.3 V power supply. It has a total of 27 LCC pins.

2.2. Key Features

The following table describes the key features of FC41D module.

Table 2: Key Features

Features	Details
Power Supply	<ul style="list-style-type: none"> ● VBAT Power Supply: Supply voltage range: 3.0–3.6 V Typical supply voltage: 3.3 V
Operating Frequency	<ul style="list-style-type: none"> ● 2.4 GHz: 2.412–2.484 GHz ● Bluetooth: 2.402–2.480 GHz

Wi-Fi Transmission Data Rates	<ul style="list-style-type: none"> ● 802.11b: 1 Mbps, 2 Mbps, 5.5 Mbps, 11 Mbps ● 802.11g: 6 Mbps, 9 Mbps, 12 Mbps, 18 Mbps, 24 Mbps, 36 Mbps, 48 Mbps, 54 Mbps ● 802.11n: HT20 (MCS0–MCS7)
Wi-Fi Transmitting Power	<ul style="list-style-type: none"> ● 2.4 GHz ● 802.11 b/11 Mbps: <u>16</u> dBm ● 802.11 g/54 Mbps: <u>14</u> dBm ● 802.11 n/HT20 MCS7: <u>13</u> dBm
Wi-Fi Protocol Features	<ul style="list-style-type: none"> ● IEEE 802.11 b/g/n
Wi-Fi Modulation	<ul style="list-style-type: none"> ● CCK, BPSK, QPSK, 16QAM, 64QAM
Wi-Fi Operation Mode	<ul style="list-style-type: none"> ● AP ● STA
Bluetooth Protocol Feature	<ul style="list-style-type: none"> ● GATT
Bluetooth Operation Mode	<ul style="list-style-type: none"> ● BLE
Bluetooth Modulation	<ul style="list-style-type: none"> ● GFSK
Wireless Application Interfaces	<ul style="list-style-type: none"> ● UART/SPI
Antenna Interface	<ul style="list-style-type: none"> ● Wi-Fi/Bluetooth antenna interface, 50 Ω impedance ● ANT_WIFI/BT, IPEX antenna and PCB antenna are optional
Physical Characteristics	<ul style="list-style-type: none"> ● Size: (18.0 ±0.15) mm × (20.0 ±0.15) mm × (2.2 ±0.2) mm (without shielding cover) (18.0 ±0.15) mm × (20.0 ±0.15) mm × (2.6 ±0.2) mm (with shielding cover) ● Package: LCC ● Weight: 1.05 g (without shielding cover) ● Weight: 1.51 g (with shielding cover)
Temperature Range	<ul style="list-style-type: none"> ● Operating temperature range: -40 °C to +85 °C ● Storage temperature range: -45 °C to +95 °C
RoHS	<ul style="list-style-type: none"> ● All hardware components are fully compliant with EU RoHS directive

2.3. Evaluation Board

To help customers develop applications with FC41D module conveniently, Quectel supplies the evaluation board (EVB). The evaluation board tool includes an EVB board (FC41D-TE-B), a USB 2.0 data cable, an antenna and other external equipment used for control and test modules. For more details, see **document [1]**.

3 Application Interfaces

3.1. General Description

The FC41D module has 27 LCC pins. The following interfaces are described in detail in subsequent chapters:

- Power supply
- Module reset
- Wireless connectivity interfaces
 - UART
 - SPI
- I2C interface
- PWM interface*
- WAKEUP interface
- Network status indication
- GPIO interfaces
- ADC interface*
- RF antenna interface

3.2. Pin Assignment

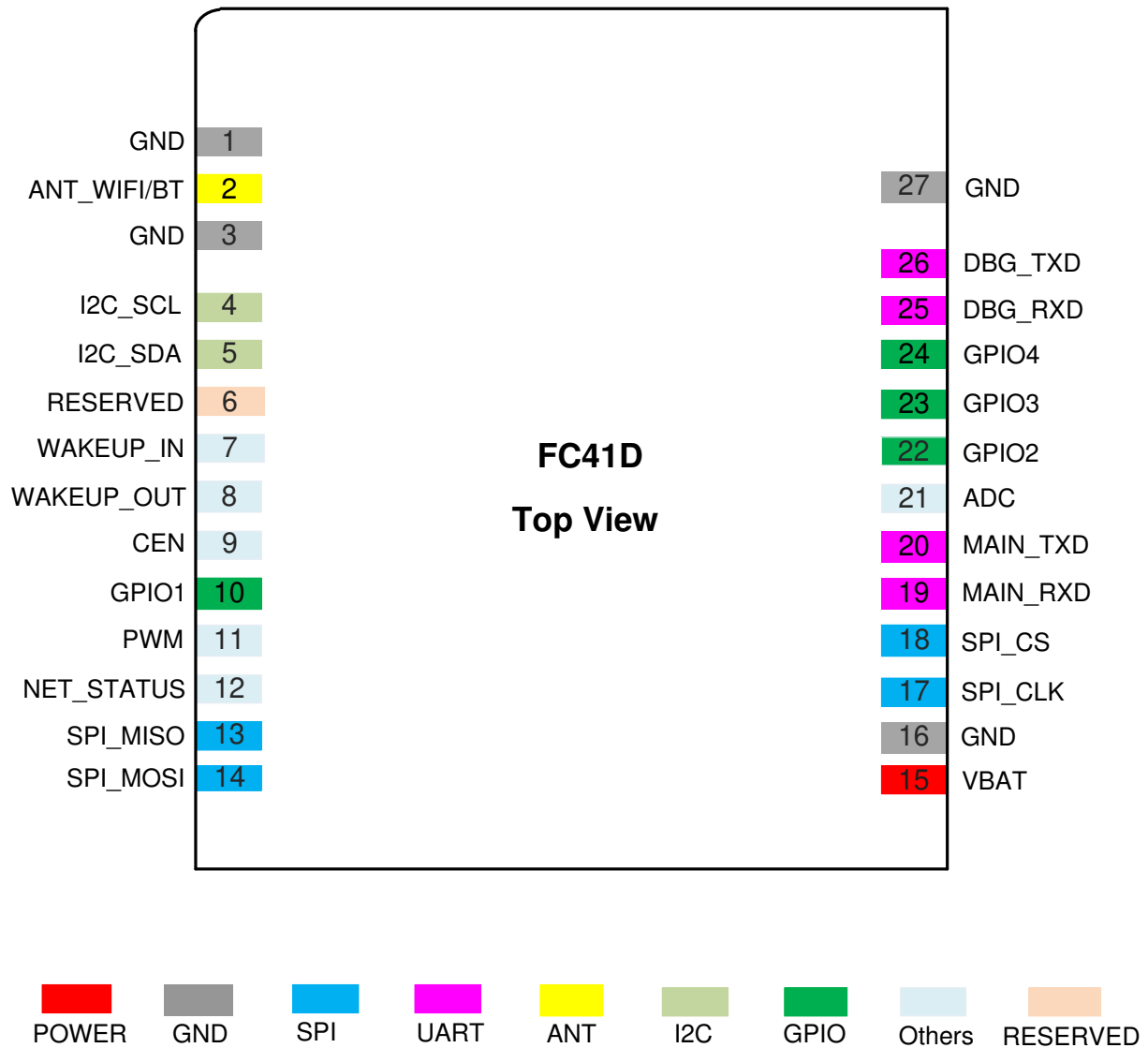


Figure 1: Pin Assignment (Top View)

NOTE

Please keep all RESERVED pins open.

3.3. Pin Description

The following tables show the pin description of module:

Table 3: I/O Parameters Description

Type	Description
AI	Analog Input
AIO	Analog Input/Output
DI	Digital Input
DIO	Digital Input/Output
DO	Digital Output
OD	Open Drain
PI	Power Input

Table 4: Pin Description

Power Supply					
Pin Name	Pin No.	I/O	Description	DC Characteristics	Comment
VBAT	15	PI	Power supply for the module	Vmax = 3.6 V Vmin = 3.0 V Vnom = 3.3 V	It must be provided with sufficient current up to 0.3 A.
GND	1, 3, 16, 27				
Reset					
Pin Name	Pin No.	I/O	Description	DC Characteristics	Comment
CEN	9	DI	Turn on/off and reset the module	Vmax = 3.6 V Vmin = 3.0 V Vnom = 3.3 V	Pulled up to 3.3 V internally.
UART Interfaces					
Pin Name	Pin No.	I/O	Description	DC Characteristics	Comment
MAIN_TXD	20	DO	Main UART	3.3 V power domain	

			transmit		
MAIN_RXD	19	DI	Main UART receive		
DBG_TXD	26	DO	Debug UART transmit		
DBG_RXD	25	DI	Debug UART receive		
SPI Interface					
Pin Name	Pin No.	I/O	Description	DC Characteristics	Comment
SPI_MISO	13	DIO	SPI master-in salve-out	3.3 V power domain	
SPI_MOSI	14	DIO	SPI master-out slave-in		
SPI_CLK	17	DIO	SPI clock		
SPI_CS	18	DIO	SPI chip selection		
I2C Interface					
Pin Name	Pin No.	I/O	Description	DC Characteristics	Comment
I2C_SCL	4	OD	I2C serial clock	3.3 V power domain	
I2C_SDA	5	OD	I2C serial data		
WAKEUP Interface					
Pin Name	Pin No.	I/O	Description	DC Characteristics	Comment
WAKEUP_IN	7	DI	Wake up the module from deep sleep	3.3 V power domain	
WAKEUP_OUT*	8	DO	Wake up output		
Indication Interface					
Pin Name	Pin No.	I/O	Description	DC Characteristics	Comment
NET_STATUS	12	DO	Indicate the module's network activity status	3.3 V power domain	Output high level when Wi-Fi is connected in STA mode; Can be reused as

PMW interface.

PWM Interface*

Pin Name	Pin No.	I/O	Description	DC Characteristics	Comment
PWM	11	DO	Pulse width modulation output channel	3.3 V power domain	

GPIO Interfaces

Pin Name	Pin No.	I/O	Description	DC Characteristics	Comment
GPIO1	10	DIO	General-purpose input/output	3.3 V power domain	Can be reused as PMW interface.
GPIO2	22	DIO	General-purpose input/output		
GPIO3	23	DIO	General-purpose input/output		
GPIO4	24	DIO	General-purpose input/output		

ADC Interface*

Pin Name	Pin No.	I/O	Description	DC Characteristics	Comment
ADC	21	AI	General-purpose ADC interface	Voltage Range: 0–2.4 V	Can be reused as PMW interface.

RF Antenna Interface

Pin Name	Pin No.	I/O	Description	DC Characteristics	Comment
ANT_WIFI/BT	2	AIO	Wi-Fi/Bluetooth antenna interface		50 Ω Impedence

RESERVED

Pin Name	Pin No.
RESERVED	6

NOTE

Please keep all RESERVED and unused pins open.

3.4. Power Supply Design

3.4.1. Pin Description

The following table shows the power supply pin and ground pin of FC41D module.

Table 5: Definition of Power Supply and GND Pins

Pin Name	Pin No.	Description	Min.	Typ.	Max.	Unit
VBAT	15	Power supply	3.0	3.3	3.6	V
GND	1, 3, 16, 27					

FC41D module is powered by VBAT, and it is recommended to use a power supply chip with sufficient current of at least 0.3 A. In order to achieve better power supply performance, it is recommended to parallel 22 μ F decoupling capacitor and 1 μ F, 100 nF filter capacitor near the module's VBAT pin. At the same time, it is suggested to add a TVS near the VBAT to improve the surge voltage bearing capacity of the module. In principle, the longer the VBAT line is, the wider it should be.

VBAT reference circuit is shown as below:

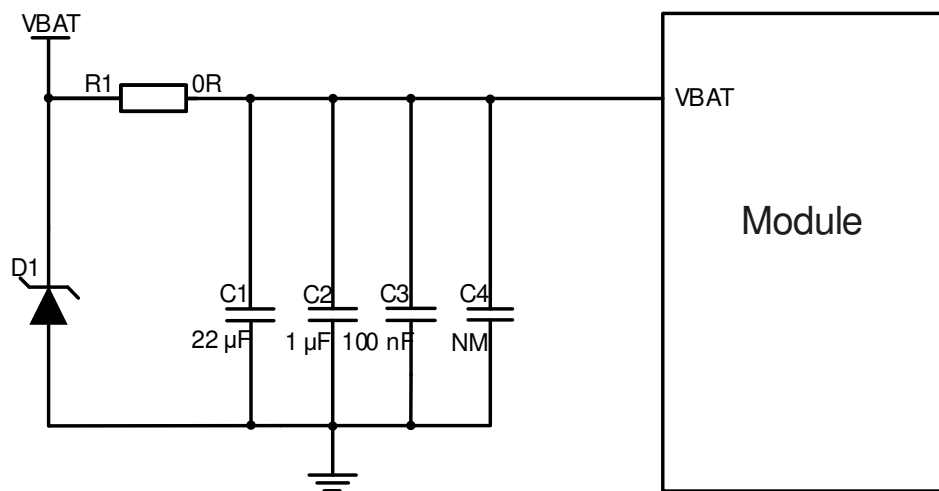


Figure 2: VBAT Reference Circuit

3.5. Reset the module

Drive CEN low for at least 100 ms and then release to reset the module.

Table 6: Definition of Power Supply and GND Pins

Pin Name	Pin No.	Description	Comment
CEN	9	Reset the module	Pulled up to 3.3 V internally (≥ 100 ms).

The reference designs for resetting the module are shown below. An open drain/collector driving circuit or a button can be used to control the CEN pin.

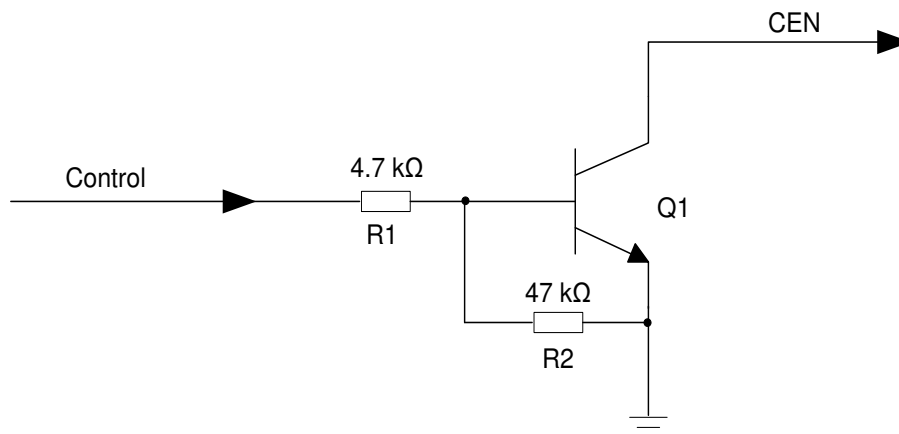


Figure 3: Reference Circuit of CEN by Using Driving Circuit

Another way to control the CEN is directly through a button switch. A TVS should be placed near the button for ESD protection. The reference circuit is as follows:

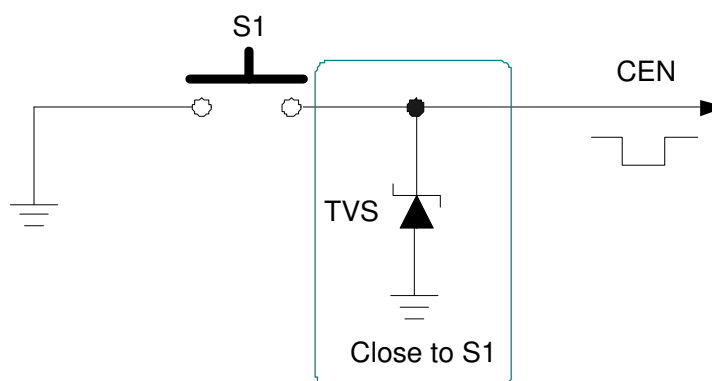


Figure 4: Reference Circuit of CEN by Using Button

The reset timing is illustrated in the following figure.

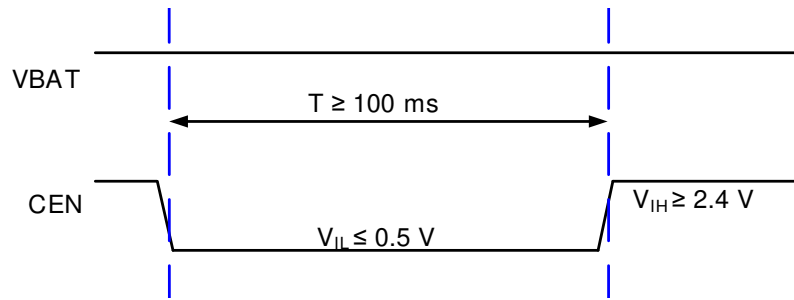


Figure 5: Timing of Resetting Module

3.6. Wireless Connection Interfaces

3.6.1. UART

The module has two serial interfaces: the main UART and the debug UART. The module is used as DCE (Data Communication Equipment), and is connected in the traditional DCE-DTE (Data Terminal Equipment) mode.

Table 7: UART Pin Definition

Interface	Pin Name	Pin No.	Description
Main UART	MAIN_TXD	20	Main UART transmit
	MAIN_RXD	19	Main UART receive
Debug UART	DBG_TXD	26	Debug UART transmit
	DBG_RXD	25	Debug UART receive

The main UART can be used for AT command transmission and data transmission. The default baud rate is 115200 bps, and the maximum baud rate can reach 921600 bps. For more details, see [document \[1\]](#).

The main UART is available for firmware upgrade and supports a default baud rate of 921600 bps when download.

The following diagram shows a schematic diagram of the main UART interface connection between DCE and DTE.

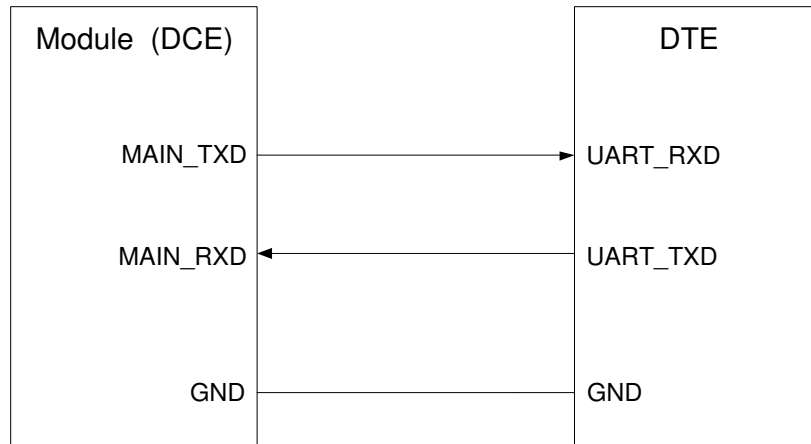


Figure 6: Main UART Connection Diagram

Through debug tools, the debug UART can be used to output logs for firmware debugging. Its baud rate is 115200 bps by default.

The following is a reference design of debug UART.

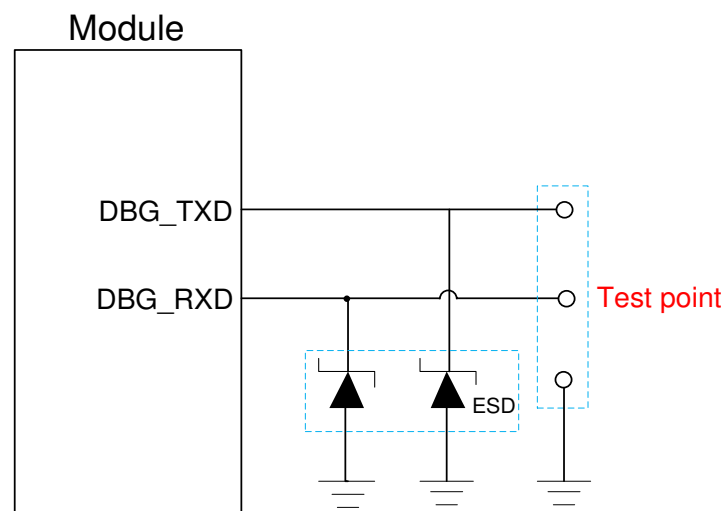


Figure 7: Debug UART Reference Circuit

3.6.2. SPI

FC41D module provides a SPI interface that supports both master and slave modes. The maximum clock frequency of the interface can reach 50 MHz in slave mode, and the clock frequency is 8 MHz in the master mode.

In the standard software version of FC41D, SPI does not provide a communication interface.

The pin description of SPI interface is shown in the below table:

Tabel 8: SPI Pin Definition

Interface	Pin Name	Pin No.	Description
SPI	SPI_MISO	13	SPI master input slave output
	SPI_MOSI	14	SPI master output slave input
	SPI_CLK	17	SPI clock
	SPI_CS	18	SPI chip selection

The timing of SPI interface is shown in the figure below, and the timing parameters are shown in the table below:

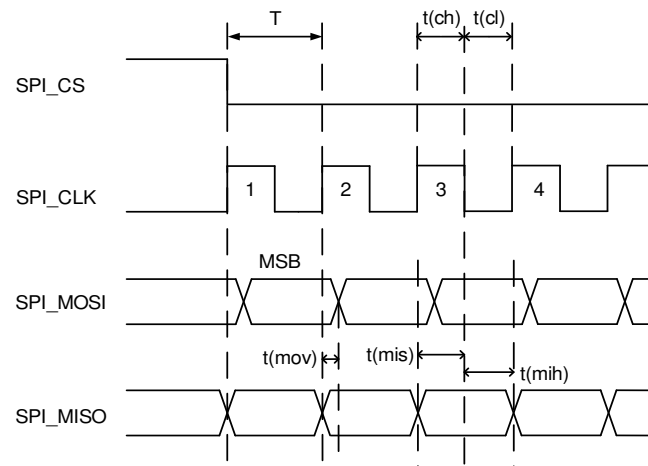


Figure 8: SPI Timing

Table 9: SPI Timing Parameters

Parameter	Description	Min.	Typ.	Max.	Unit
T	SPI clock cycle	20.0	-	-	ns
t(ch)	SPI clock high level time	9.0	-	-	ns
t(cl)	SPI clock low time	9.0	-	-	ns
t(mov)	SPI valid time of master mode data output	-5.0	-	5.0	ns
t(mis)	SPI setup time of master mode data input	5.0	-	-	ns

t(mih)	SPI hold time of master mode data input	1.0	-	-	ns
--------	---	-----	---	---	----

3.7. I2C Interface

FC41D module provides an I2C interface that support support master mode only with maximum clock frequency of 400 kHz and 7-bit addressing. It can be used to connect peripherals such as EEPROM.

Table 10: I2C Pin Definition

Pin Name	Pin No.	I/O	Description	Function
I2C_SCL	4	OD	I2C serial clock	Require external pull-up to 3.3 V
I2C_SDA	5	OD	I2C serial data	

3.8. PWM Interface*

FC41D module provides 1 PWM channel by default, and can supports up to 6 PWM interfaces through multiplexing from other interfaces. Each PWM channel has three modes: Timer mode, PWM mode, Capture mode, and each mode of each channel is multiplexed 32-bit count. The period and duty cycle are configurable on PWM mode.

The following table show the pin description of PWM interfaces.

Table 11: PWM Pin Definition

Pin Name	Pin No.	I/O	Function	
			Default Function	Alternate Function
GPIO2	22	DO	GPIO2	PWM1
GPIO3	23	DO	GPIO3	PWM2
GPIO4	24	DO	GPIO4	PWM3
PWM	11	DO	PWM4	
NET_STATUS	12	DO	NET_STATUS	PWM5

ADC	21	DO	ADC	PWM6
-----	----	----	-----	------

3.9. WAKEUP Interface

FC41D supports waking up host with WAKEUP_OUT*, and it can also be woken up from deep sleep by WAKEUP_IN.

Table 12: Pin Definition of WAKEUP Interfaces

Pin Name	Pin No.	I/O	Description	Comment
WAKEUP_IN	7	DI	Wake up the module from deep sleep	Rise level wakeup
WAKEUP_OUT*	8	DO	Wake up output	

3.10. Network Status Indication

FC41D provides one network indication pin: NET_STATUS. The pin is used to drive a network status indication LED.

The following tables describe the pin definition and logic level changes of NET_STATUS.

Table 13: NET_STATUS Pin Definition

Pin Name	Pin No.	I/O	Description	Note
NET_STATUS	12	DO	Indicate the module's network activity status	Output high level when Wi-Fi is connected in STA mode

A reference circuit is shown in the following figure.

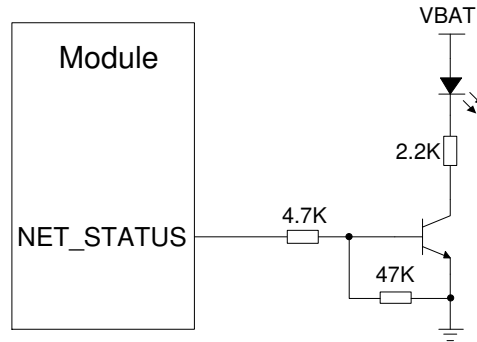


Figure 9: Reference Circuit of the Network Status Indicator

3.11. GPIO Interfaces

FC41D module provides 4 GPIOs by default. Any GPIO can be configured as interrupt to wake the module from low power mode.

The following table show the pin description of GPIO Interfaces.

Tabel 14: GPIO Pin Definition

Pin Name	Pin No.	I/O	Description	Note
GPIO1	10	DIO	General-purpose input/output	Wake-up interrupt; 3.3 V voltage domain.
GPIO2	22			
GPIO3	23			
GPIO4	24			

3.12. ADC Interface*

The module provides one ADC interface by default, and the voltage range is 0–2.4 V. The AT command can be used to read the voltage value of the ADC. In order to ensure the accuracy of the ADC voltage measurement, the ADC traces should be surrounded with ground.

Table 15: ADC Pin Definition

Pin Name	Pin No.	Description
ADC	21	General-purpose ADC interface

Table 16: ADC Features

Parameter	Min.	Typ.	Max.	Unit
ADC Voltage Range	0	-	2.4	V
ADC Resolution Rate	-	TBD	-	bits
ADC Sample Rate	-	TBD	-	MHz

3.13. RF Antenna Interface

FC41D module provides PCB antenna, IPEX connector or ANT_WIFI/BT pin (stamp hole) in three order codes. The IPEX connector is not mounted on the module when using PCB antenna or ANT_WIFI/BT pin.

3.13.1. Operating Frequency

The operating frequency of FC41D module is shown in the table below:

Table 17: FC41D Operating Frequency

Mode	Frequency	Unit
2.4 GHz Wi-Fi	2.412–2.484	GHz
Bluetooth 5.2	2.402–2.480	GHz

3.13.2. RF Antenna Pin Description

RF Antenna pin description is as below:

Table 18: Antenna Pin Definition

Pin Name	Pin No.	I/O	Description	Note
ANT_WIFI/BT	2	AIO	Wi-Fi/Bluetooth antenna interface	50 Ω impedance

3.13.3. On Board PCB Antenna

Table 19: On Board PCB Antenna Characteristics*

Characters	Min.	Typ.	Max.	Unit
Frequency	2400	-	2500	MHz
Impedance	-	50	-	Ω
VSWR	-	-	2	-
Gain	-	2	-	dBi
Efficiency	-	35%	-	-

3.13.4. IPEX Connector

The mechanic size of the IPEX connector([MPN: 20579-001E, MHF 4L Receptacle](#)) provided by the FC41D module are as follows.

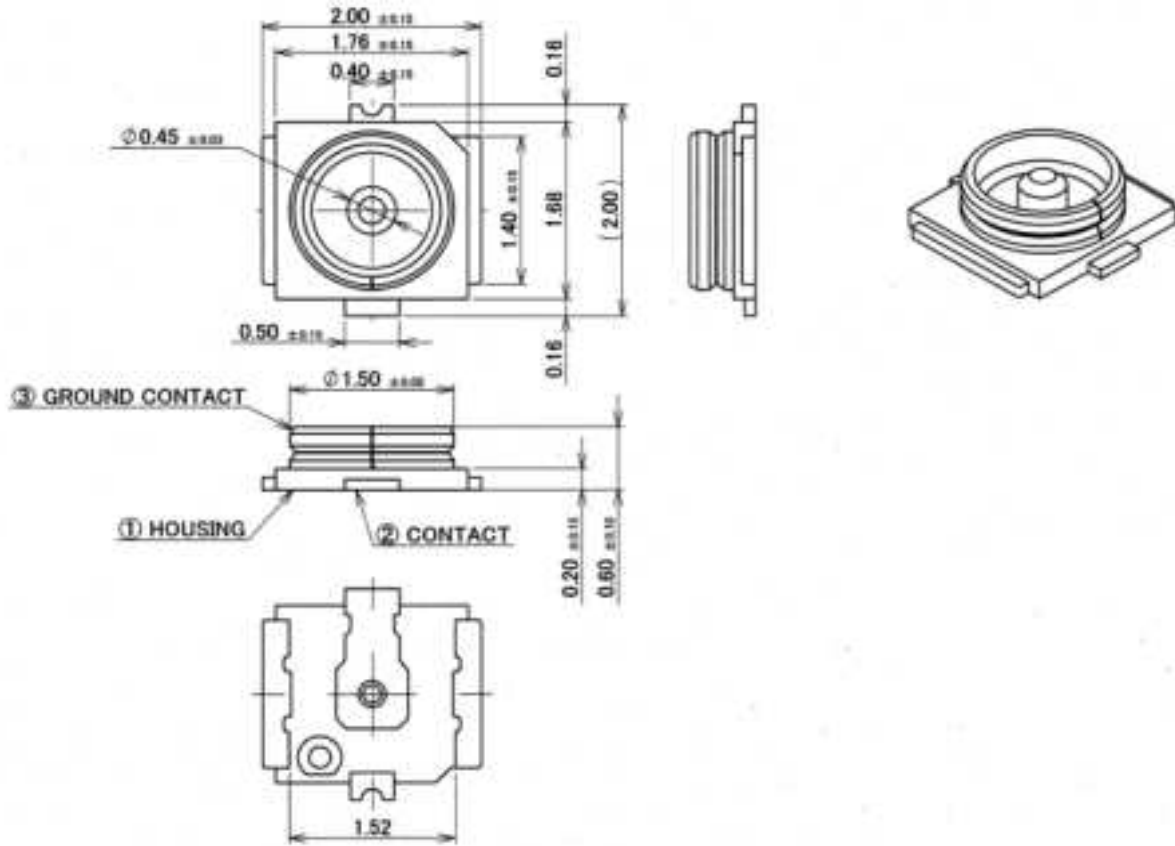


Figure 10: IPEX Connector Size

3.13.5. RF Antenna Reference Design

FC41D module is equipped with RF antenna pad for connecting Wi-Fi/Bluetooth antennas. The RF trace between main PCB and the module RF antenna pin must be the microstrip line or other types of RF trace, and the characteristic impedance should be close to 50 Ω . The GND pin of FC41D series module is close to the antenna solder pad for better grounding effect.

The circuit of RF antenna interface is shown below. In order to achieve better RF performance, it is necessary to reserve LC and π matching circuit. Matching components such as R1, L1, C1, C2, C3 should be placed as close to the antenna as possible, L1, C1, C2, C3 is not mounted by default.

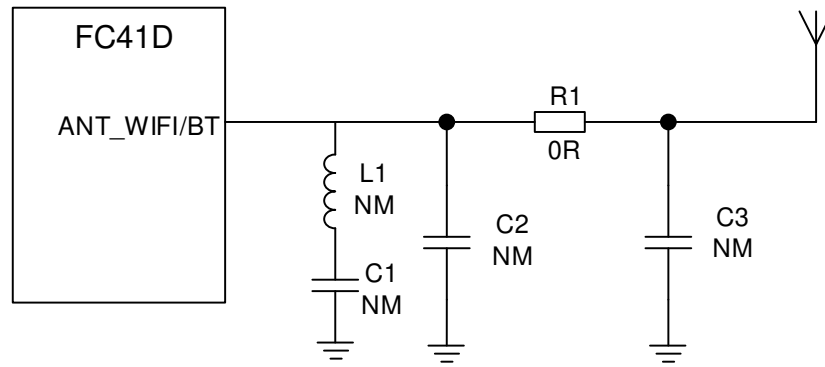


Figure 11: RF Antenna Reference Design

When using the PCB antenna on the module, the module should be placed at the side of the motherboard as far as possible, and the distance of keeout between PCB antenna to GND of motherboard should be at least 3mm, and the distance between PCB antenna to connectors, pin headers, ethernet port and any other high components on the motherboard should be at least 16 mm. All layers in the PCB of the motherboard under the PCB antenna should be designed as keepout areas.

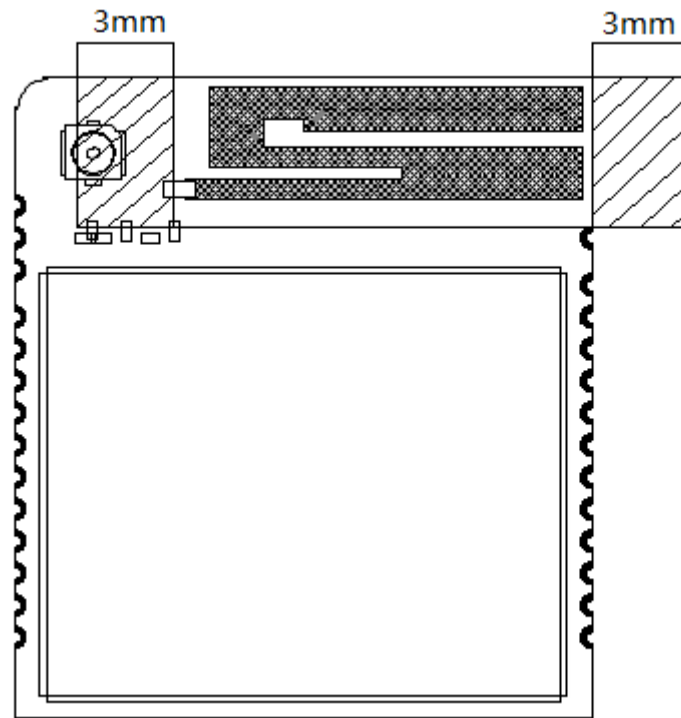


Figure 12: keepout areas on the motherboard

3.13.6. Reference Design of RF Layout

The characteristic impedance of all RF traces on your PCB should be controlled at 50 Ω . The impedance

of the RF traces is usually determined by the trace width (W), the material's dielectric constant, the height from the reference ground to the signal layer (H), and the spacing between RF traces and grounds (S). The microstrip or coplanar waveguide is typically used in RF layout to control characteristic impedance. The following are reference designs for microstrip or coplanar waveguide transmission lines with different PCB structures.

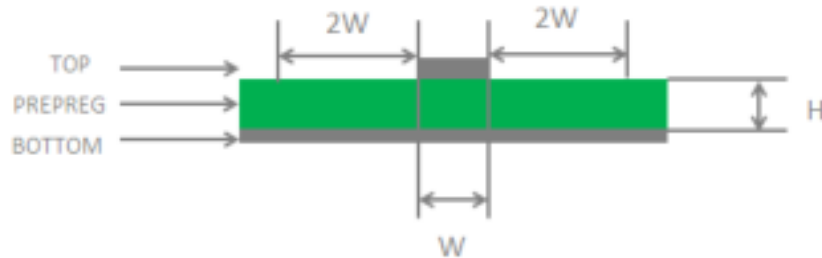


Figure 13: Microstrip Design on a 2-layer PCB

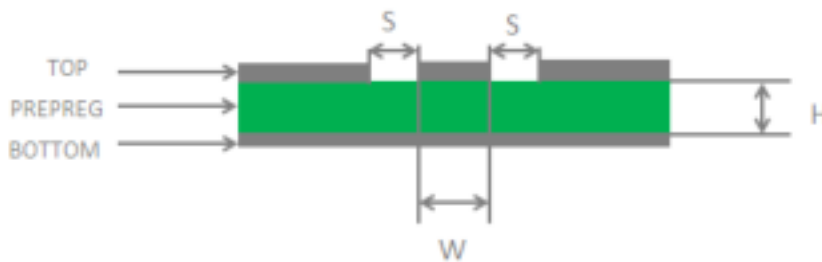


Figure 14: Coplanar Waveguide Design on a 2-layer PCB

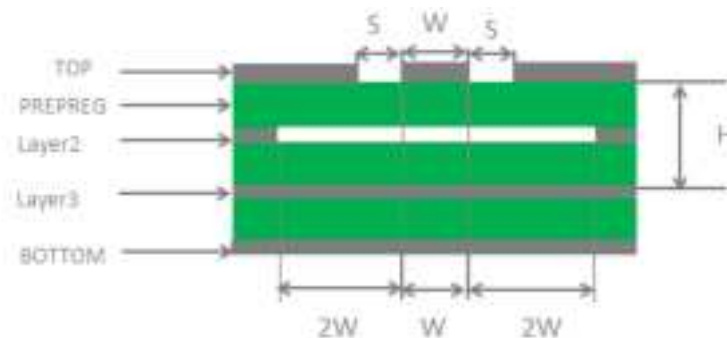


Figure 15: Coplanar Waveguide Design on a 4-layer PCB (Layer 3 as Reference Ground)

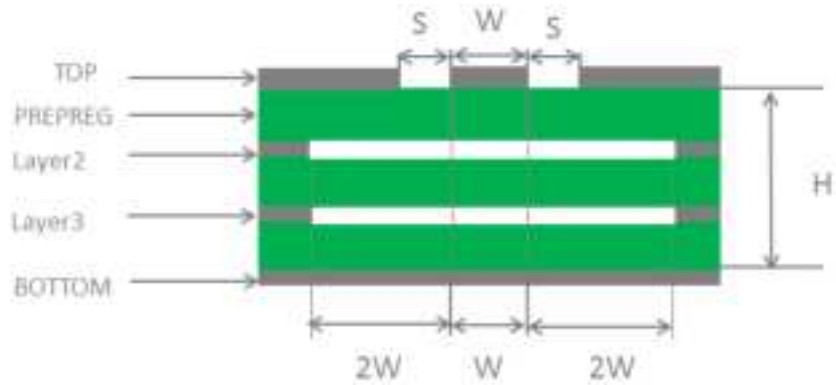


Figure 16: Coplanar Waveguide Design on a 4-layer PCB (Layer 4 as Reference Ground)

To ensure RF performance and reliability, the following principles should be complied with in RF layout design:

- Use an impedance simulation tool to accurately control the characteristic impedance of RF traces to 50 Ω .
- The GND pins adjacent to RF pins should not be designed as thermal relief pads, and should be fully connected to ground.
- The distance between the RF pins and the RF connector should be as short as possible and all the right-angle traces should be changed to curved ones. The recommended trace angle is 135°.
- There should be clearance under the signal pin of the antenna connector or solder joint.
- The reference ground of RF traces should be complete. Meanwhile, adding some ground vias around RF traces and the reference ground could help to improve RF performance. The distance between the ground vias and RF traces should be no less than two times the width of RF signal traces ($2 \times W$).
- Keep RF traces away from interference sources, and avoid intersection and paralleling between traces on adjacent layers.

For more details, see **document [3]**.

3.13.7. Antenna Cable and Antenna Requirements

To minimize the loss on RF trace and RF cable, pay attention to the antenna design. The following tables show the requirements on Wi-Fi and Bluetooth antenna.

Table 20: Antenna Cable Requirement

Frequency	Requirement
2.412–2.484 GHz	Insertion loss <1 dB

Table 21: Antenna Requirement

Type	Requirement
Frequency	2.412–2.484 GHz
VSWR	< 2
Gain (dBi)	Typical 1
Max input power (W)	50
Input impedance (Ω)	50
Polarization type	Vertical

3.14. Recommended RF Connector for Antenna Installation

If RF connector is used for antenna connection, it is recommended to use Hirose's U. FL-R-SMT connector.

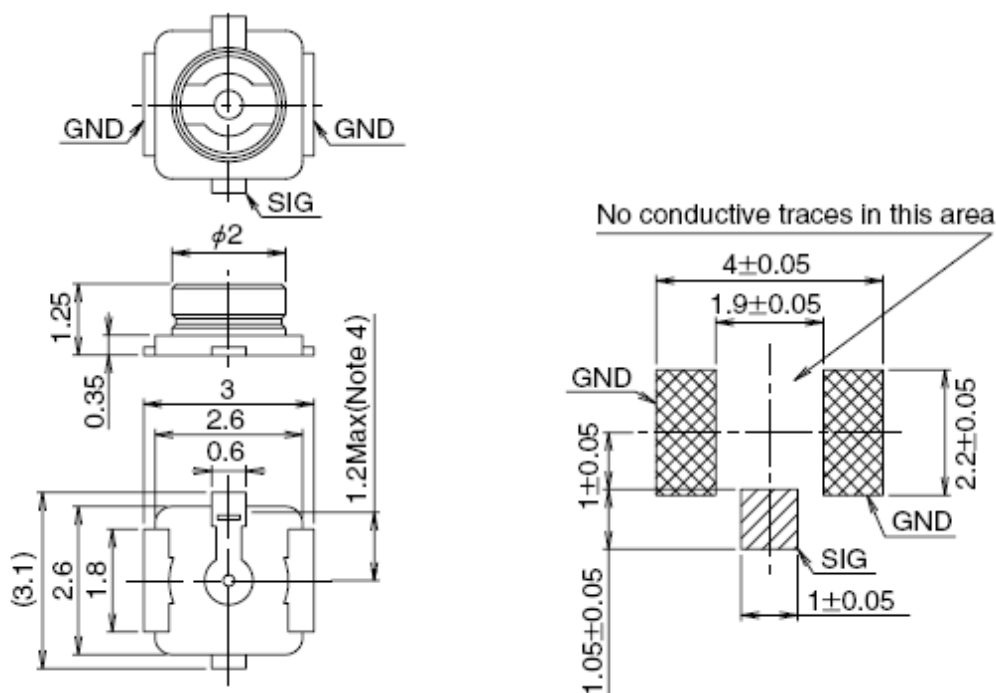


Figure 17: U.FL-R-SMT Connector (Unit: mm)

U. FL-LP series connectors can be selected to match U.FL-R-SMT.

Part No.	U.FL-LP-040	U.FL-LP-066	U.FL-LP(V)-040	U.FL-LP-062	U.FL-LP-088
Mated Height	2.5mm Max. (2.4mm Nom.)	2.5mm Max. (2.4mm Nom.)	2.0mm Max. (1.9mm Nom.)	2.4mm Max. (2.3mm Nom.)	2.4mm Max. (2.3mm Nom.)
Applicable cable	Dia. 0.81mm Coaxial cable	Dia. 1.13mm and Dia. 1.32mm Coaxial cable	Dia. 0.81mm Coaxial cable	Dia. 1mm Coaxial cable	Dia. 1.37mm Coaxial cable
Weight (mg)	63.7	59.1	34.8	45.5	71.7
RoHS	YES				

Figure 18: U. FL-LP Series Connectors

The following diagram shows the connector and the assembled dimensions of the connector:

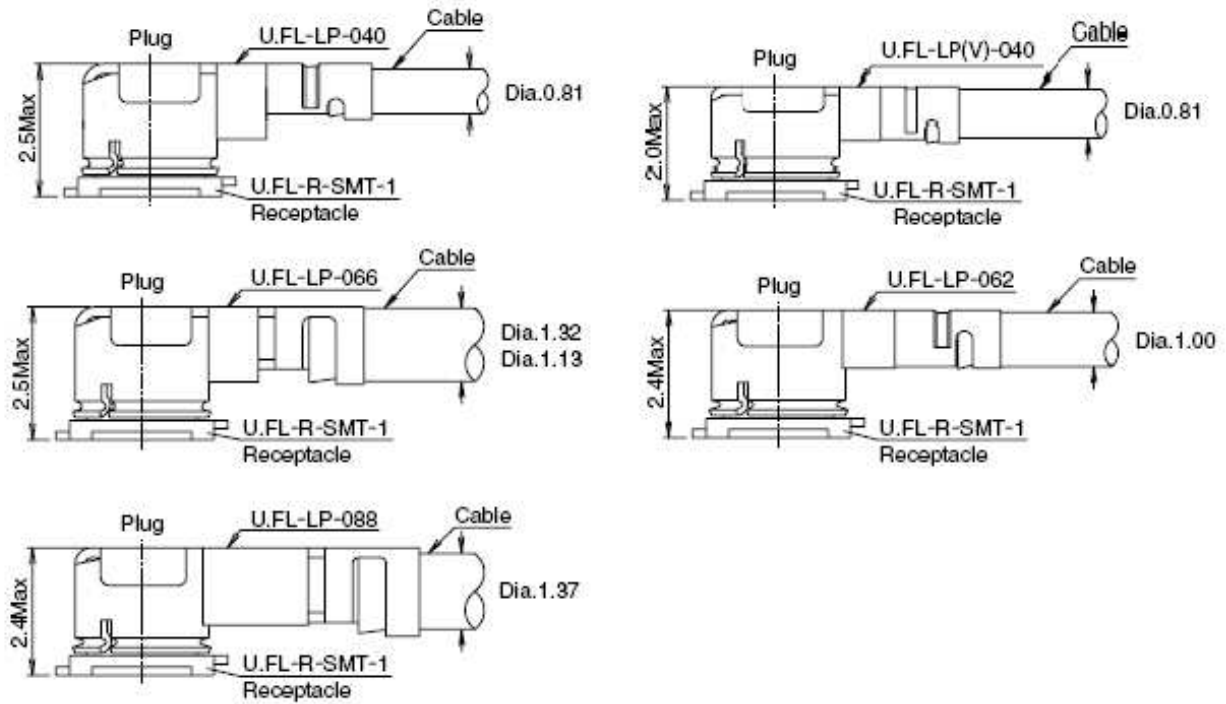


Figure 19: Connectors and Connector Combinations (Unit: mm)

For more information, please visit <http://www.hirose.com>.

4 Reliability, Radio and Electrical Characteristics

4.1. General Description

This chapter mainly introduces the electrical characteristics and RF characteristics of the module. The specific contents are as follows:

- Electrical Characteristics
- I/O Characteristics
- Power Consumption
- RF Characteristics
- ESD Performance

4.2. Electrical Characteristics

Absolute maximum ratings and recommended operating condition for power supply and voltage on digital and analog pins of the module are listed in the following table.

Table 22: Absolute Maximum Ratings

Parameter	Min.	Max.	Unit
VBAT	-0.3	3.9	V
I/O input voltage	-0.3	3.9	V

Table 23: Recommended Operating Conditions

Parameter	Min.	Typ.	Max.	Unit
VBAT	3.0	3.3	3.6	V

4.3. I/O Characteristics

The following table lists the general DC electrical characteristics of the module.

Table 24: General DC Electrical Characteristics

Parameter	Description	Min.	Max.	Unit
V _{IH}	High Level Input Voltage	0.7 × V _{IO}	V _{IO} + 0.2	V
V _{IL}	Low Level Input Voltage	-0.3	0.3 × V _{IO}	V
V _{OH}	High Level Output Voltage	0.9 × V _{IO}	V _{IO}	V
V _{OL}	Low Level Output Voltage	0	0.1 × V _{IO}	V
I _{IL}	Input leakage current	-5	5	μA

4.4. Current Consumption

The following tables show the power consumption of the module in different modes.

4.4.1. Power Consumption in Low Power Modes

Table 25: Power Consumption of the Module (Low Power Modes, unit: mA)

Parameter	Condition	Typical	Unit
Deep sleep current	AT+QDEEPSLEEP	8.6	μA
Low voltage standby current		TBD	μA
Normal standby current		TBD	μA

Idle	WiFi <u>and BT don't work</u>	22.74	mA
------	-------------------------------	-------	----

4.4.2. Power Consumption In Work Mode

Parameter	Condition	Typical	Unit
Wi-Fi Scan	<u>Scan every 2s</u>	68.59	μA
Wi-Fi Connected	Connect as Sta mode	74.52	mA
	Only enable AP, with 1 STA connection	77.11	mA
	Only enable AP, with 2 STA connection	77.29	mA
	Enable AP and STA synchronously, with STA mode connection	77.09	mA
data transmission mode	SoftAP mode data transmission	155.29	mA
	Sta mode data transmission	147.81	mA
	SoftAP mode+BLE Server mode data transmission	157.56	mA
	STA+BLE Server mode data transmission	149.66	mA
BT connected	Receive data as a Server	28.41	mA
	Transmit data as a Server	28.39	mA
	Receive data as a Client	23.68	mA
	Transmit data as a Client	23.68	mA
RF Nonsignaling mode	802.11b TX (2.4 GHz) 1 Mbps	91	mA
	802.11b TX (2.4 GHz) 11 Mbps	92	mA
	802.11g TX (2.4 GHz) 6 Mbps	90	mA
	802.11g TX (2.4 GHz) 54 Mbps	88	mA
	802.11n TX (2.4 GHz) HT20 MCS0	89	mA
	802.11n TX (2.4 GHz) HT20 MCS7	88	mA

4.5. RF Performances

4.5.1. Wi-Fi Performances

Table 26: 2.4 GHz Conducted Output Power

Operating Mode / Rate	Min.	Typ.	Unit
802.11b @ 1 Mbps	14	16	dBm
802.11b @ 11 Mbps	14	16	dBm
802.11g @ 6 Mbps	13	15	dBm
802.11g @ 54 Mbps	12	14	dBm
802.11n, HT20 @ MCS0	12	14	dBm
802.11n, HT20 @ MCS7	11	<u>13</u>	dBm

Table 27: 2.4 GHz Conducted Receive Sensitivity

Operating Mode / Rate	Typ. (dBm)
802.11b @ 1 Mbps	-96
802.11b @ 11 Mbps	-87
802.11g @ 6 Mbps	-89
802.11g @ 54 Mbps	-72
802.11n, HT20 @ MCS0	-89
802.11n, HT20 @ MCS7	-70

4.5.2. BLE Performances

Table 28: BLE Conducted Mode Output Power / Receive Sensitivity

Operating Mode	Output Power (Typical)	Receive Sensitivity (Typical)	Unit
BLE (1 MHz)	6	-95	dBm

4.6. ESD Performances

The module is not protected against electrostatics discharge (ESD) in general. Consequently, it is subject to ESD handling precautions that typically apply to ESD sensitive components. Proper ESD handling and packaging procedures must be applied throughout the processing, handling and operation of any application that incorporates the module.

The following table shows the module electrostatic discharge characteristics.

Table 29: ESD Characteristics (Temperature: 25 °C, Humidity: 45 %)

Tested Interfaces	Contact Discharge	Air Discharge	Unit
VBAT, GND	±4	±8	kV
ANT_WIFI/BT	±4	±8	kV
Other Interfaces	±0.5	±1	kV

5 Mechanical Dimensions

This chapter describes the mechanical dimensions of the module. All dimensions are measured in millimeter (mm), and the dimensional tolerances are ± 0.2 mm unless otherwise specified.

5.1. Mechanical Dimensions of the Module

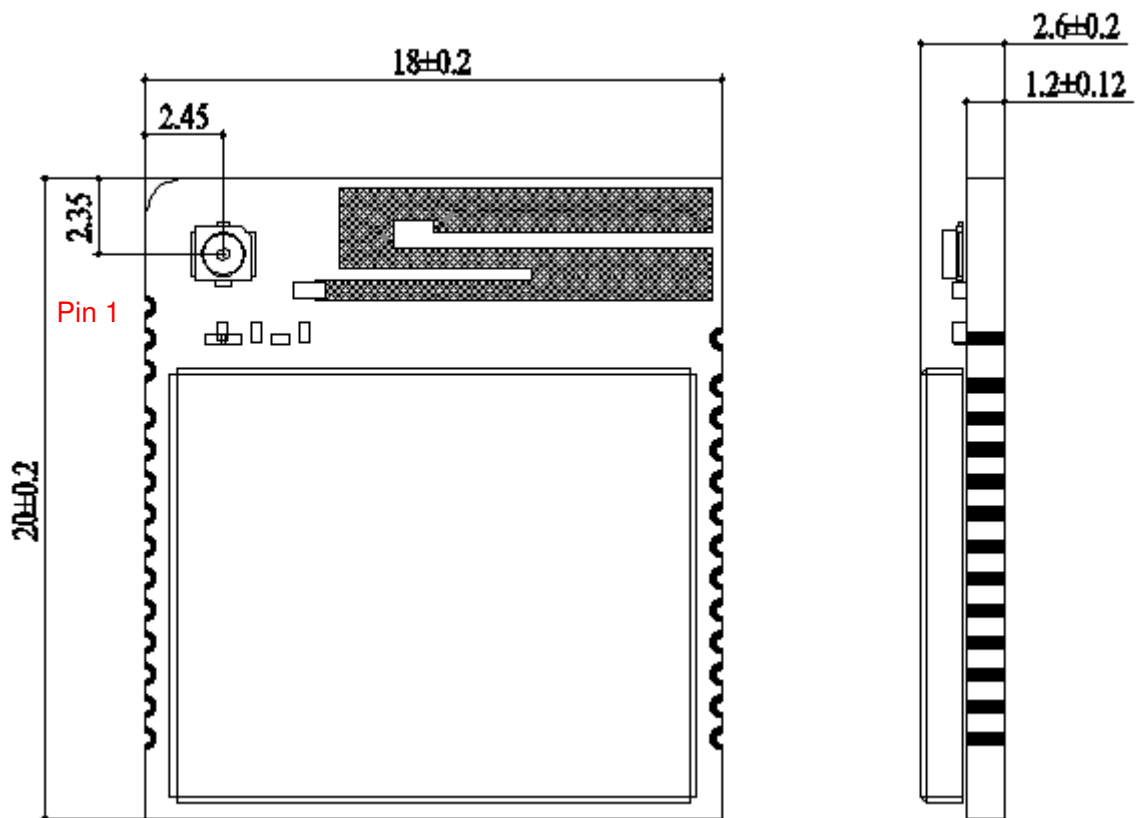
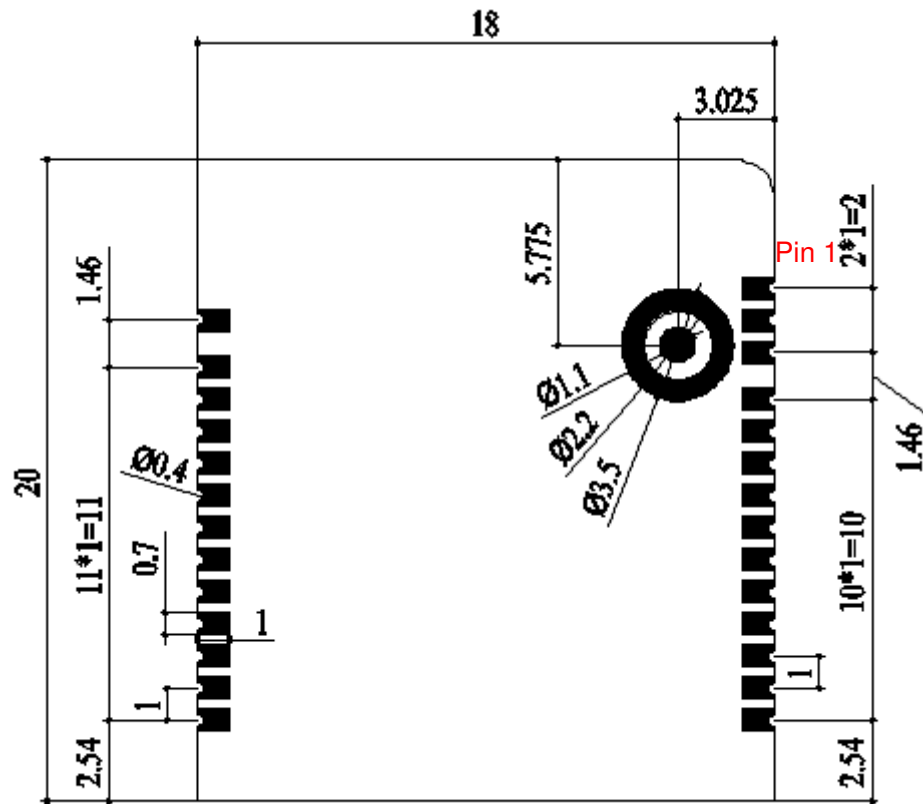


Figure 20: Module Top and Side Dimensions



NOTE

The package warpage level of the module conforms to the *JEITA ED-7306* standard.

5.2. Recommended Footprint

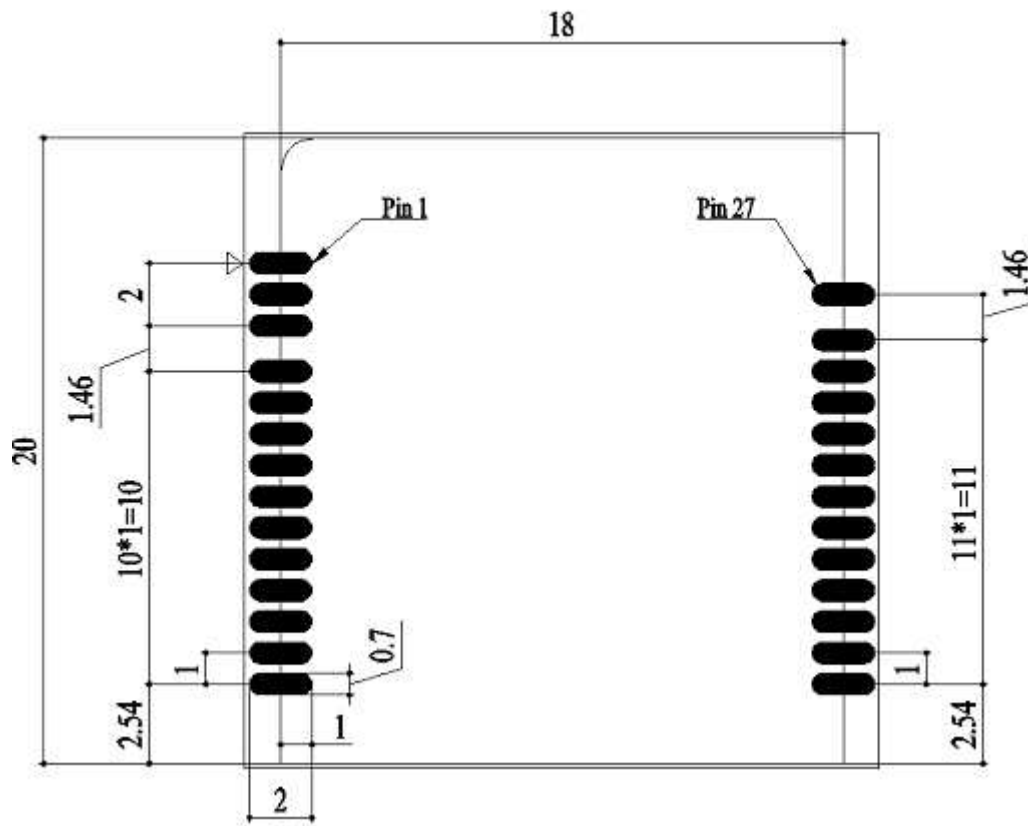


Figure 22: Recommended Footprint (Top View)

NOTE

For easy maintenance of the module, keep about 3 mm between the module and other components on the motherboard.

6 Storage, Manufacturing and Packaging

6.1. Storage

The module is provided with vacuum-sealed packaging. MSL of the module is rated as 3. The storage requirements are shown below.

1. Recommended Storage Condition: The temperature should be 23 ± 5 °C and the relative humidity should be 35–60 %.
2. The storage life (in vacuum-sealed packaging) is 12 months in Recommended Storage Condition.
3. The floor life of the module is 168 hours ¹ in a plant where the temperature is 23 ± 5 °C and relative humidity is below 60 %. After the vacuum-sealed packaging is removed, the module must be processed in reflow soldering or other high-temperature operations within 168 hours. Otherwise, the module should be stored in an environment where the relative humidity is less than 10 % (e.g. a drying cabinet).
4. The module should be pre-baked to avoid blistering, cracks and inner-layer separation in PCB under the following circumstances:
 - The module is not stored in Recommended Storage Condition;
 - Violation of the third requirement above occurs;
 - Vacuum-sealed packaging is broken, or the packaging has been removed for over 24 hours;
 - Before module repairing.
5. If needed, the pre-baking should follow the requirements below:
 - The module should be baked for 8 hours at 120 ± 5 °C;
 - All modules must be soldered to PCB within 24 hours after the baking, otherwise they should be put in a dry environment such as in a drying oven.

¹ This floor life is only applicable when the environment conforms to *IPC/JEDEC J-STD-033*. It is recommended to start the solder reflow process within 24 hours after the package is removed if the temperature and moisture do not conform to, or are not sure to conform to *IPC/JEDEC J-STD-033*. And do not remove the packages of tremendous modules if they are not ready for soldering.

NOTE

1. To avoid blistering, layer separation and other soldering issues, extended exposure of the module to the air is forbidden.
2. Take out the module from the package and put it on high-temperature-resistant fixtures before baking. All modules must be soldered to PCB within 24 hours after the baking, otherwise put them in the drying oven. If shorter baking time is desired, see *IPC/JEDEC J-STD-033* for the baking procedure.
3. Pay attention to ESD protection, such as wearing anti-static gloves, when touching the modules.

6.2. Manufacturing and Soldering

Push the squeegee to apply the solder paste on the surface of stencil, thus making the paste fill the stencil openings and then penetrate to the PCB. Apply proper force on the squeegee to produce a clean stencil surface on a single pass. To guarantee module soldering quality, the thickness of stencil for the module is recommended to be 0.15–0.18 mm. For more details, see **document [4]**.

The peak reflow temperature should be 238–246 °C, with 246 °C as the absolute maximum reflow temperature. To avoid damage to the module caused by repeated heating, it is strongly recommended that the module should be mounted only after reflow soldering for the other side of PCB has been completed. The recommended reflow soldering thermal profile (lead-free reflow soldering) and related parameters are shown below.

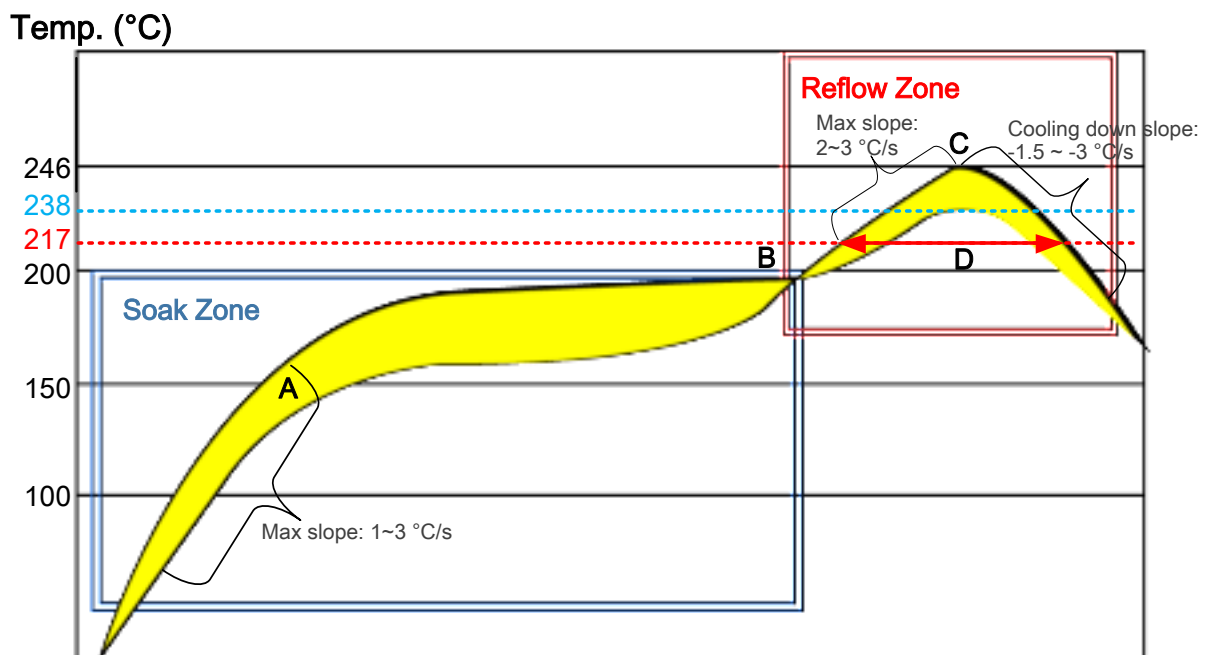


Figure 23: Recommended Reflow Soldering Thermal Profile

Table 30: Recommended Thermal Profile Parameters

Factor	Recommendation
Soak Zone	
Max slope	1–3 °C/s
Soak time (between A and B: 150 °C and 200 °C)	70–120 s
Reflow Zone	
Max slope	2–3 °C/s
Reflow time (D: over 217 °C)	40–70 s
Max temperature	238 °C to 246 °C
Cooling down slope	-1.5 to -3 °C/s
Reflow Cycle	
Max reflow cycle	1

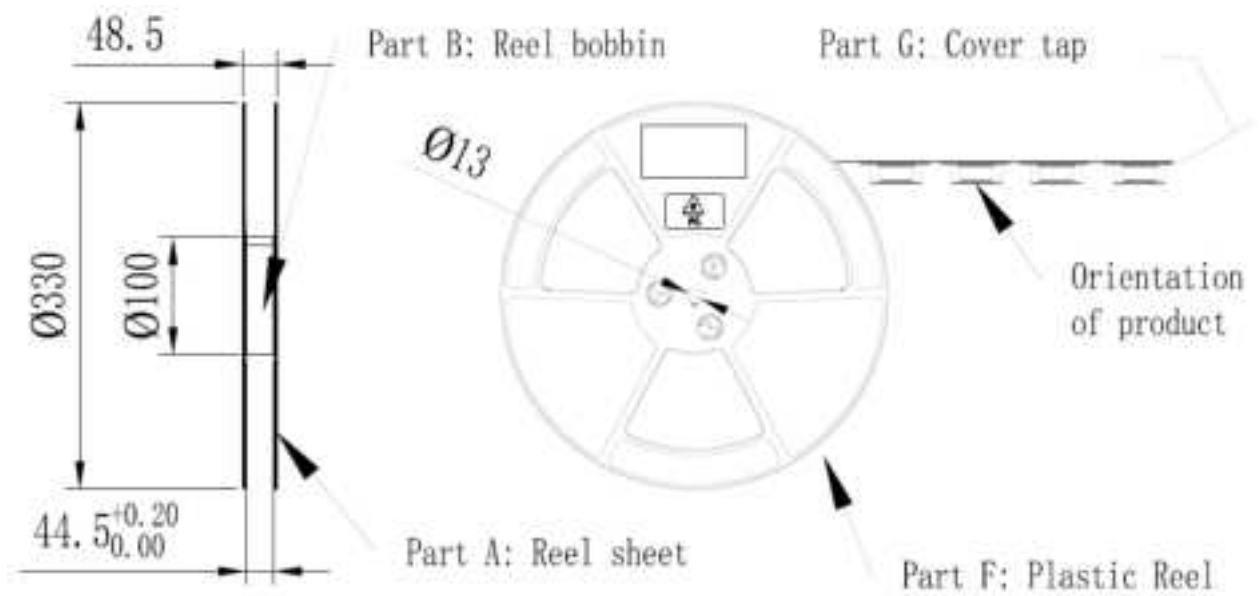
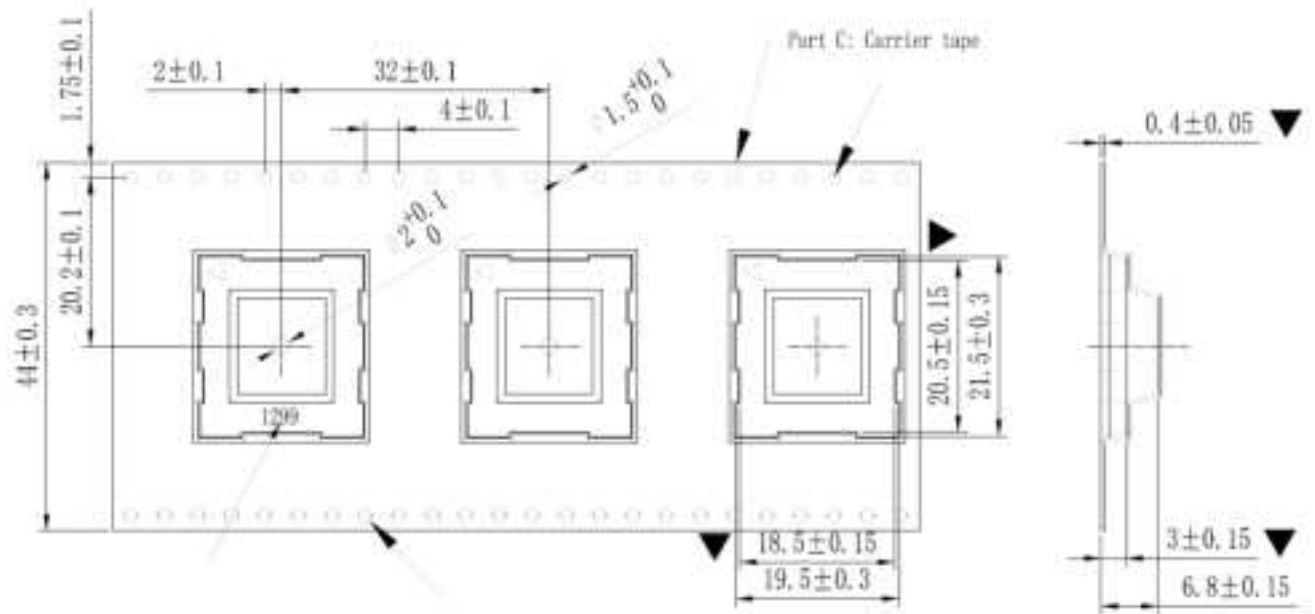
NOTE

1. During manufacturing and soldering, or any other processes that may contact the module directly, NEVER wipe the module's shielding can with organic solvents, such as acetone, ethyl alcohol, isopropyl alcohol, trichloroethylene, etc. Otherwise, the shielding can may become rusted.
2. The shielding can for the module is made of Cupro-Nickel base material. It is tested that after 12 hours' Neutral Salt Spray test, the laser engraved label information on the shielding can is still clearly identifiable and the QR code is still readable, although white rust may be found.
3. If a conformal coating is necessary for the module, do NOT use any coating material that may chemically react with the PCB or shielding cover, and prevent the coating material from flowing into the module.

6.3. Packaging

FC41D module is packaged with tape and sealed in a vacuum bag. It is recommended to open the vacuum package when it is used in actual production.

Each reel contains 250 FC41D modules with a reel diameter of 330 mm. The figures below show the packaging details, measured in mm.



7 Appendix References

Table 31: Reference Documents

Document Name
[1] Quectel_FC41D-TE-B_User_Guide
[2] Quectel_FC41D_AT_Command_Manual
[3] Quectel_RF_Layout_Application_Note
[4] Quectel_Module_SMT_Application_Note

Table 32: Terms and Abbreviations

Abbreviation	Description
AP	Access Point
BLE	Bluetooth Low Energy
BPSK	Binary Phase Shift Keying
BT	Bluetooth
CCK	Complementary Code Keying
CTS	Clear To Send
DPSK	Differential Phase Shift Keying
DQPSK	Differential Quadrature Reference Phase Shift Keying
ESD	Electrostatic Discharge
GATT	Generic Attribute Profile
GFSK	Gauss frequency Shift Keying

GND	Ground
HT	High Throughput
IEEE	Institute of Electrical and Electronics Engineers
I/O	Input/Output
Mbps	Million Bits Per Second
QAM	Quadrature Amplitude Modulation
QPSK	Quadrature Phase Shift Keying
RF	Radio Frequency
RH	Relative Humidity
RoHS	Restriction of Hazardous Substances
STA	Spike-triggered average
RTS	Request to Send
RXD	Receive Data
SDIO	Secure Digital Input and Output Card
TBD	To Be Determined
TXD	Transmit Data
UART	Universal Asynchronous Receiver/Transmitter
USB	Universal Serial Bus
VHT	Very High Throughput
Vnom	Normal Voltage Value
VSWR	Voltage Standing Wave Ratio
Wi-Fi	Wireless Fidelity

Hereby, [Quectel] declares that the radio equipment type [Stand-alone Wi-Fi&Bluetooth Module] is in compliance with Directive 2014/53/EU.

The full text of the EU declaration of conformity is available at the following internet address:

<https://www.quectel.com/shop>

OEM/Integrators Installation Manual

Important Notice to OEM integrators

- 1.This module is limited to OEM installation ONLY.
2. This module is limited to installation in mobile or fixed applications, according to Part 2.1091(b).
- 3.The separate approval is required for all other operating configurations, including portable configurations with respect to Part 2.1093 and different antenna configurations
- 4.For FCC Part 15.31 (h) and (k): The host manufacturer is responsible for additional testing to verify compliance as a composite system. When testing the host device for compliance with Part 15 Subpart B, the host manufacturer is required to show compliance with Part 15 Subpart B while the transmitter module(s) are installed and operating. The modules should be transmitting and the evaluation should confirm that the module's intentional emissions are compliant (i.e. fundamental and out of band emissions). The host manufacturer must verify that there are no additional unintentional emissions other than what is permitted in Part 15 Subpart B or emissions are complaint with the transmitter(s) rule(s). The Grantee will provide guidance to the host manufacturer for Part 15 B requirements if needed.

IMPORTANT NOTE:

In the event that these conditions can not be met (for example certain laptop configurations or co-location with another transmitter), then the FCC authorization is no longer considered valid and the FCC ID can not be used on the final product. In these circumstances, the OEM integrator will be responsible for re-evaluating the end product (including the transmitter) and obtaining a separate FCC authorization.

End Product Labeling

The final end product must be labeled in a visible area with the following:

Contains FCC ID:XMR20211108FC41D ; IC :10224A-20211108FC41D.

Manual Information to the End User

The OEM integrator has to be aware not to provide information to the end user regarding how to install or remove this RF module in the user' s manual of the end product which integrates this module.

Federal Communication Commission Interference Statement

This equipment has been tested and found to comply with the limits for a Class B digital device,

pursuant to Part 15 of the FCC Rules. These limits are designed to provide reasonable protection against harmful interference in a residential installation. This equipment generates, uses and can radiate radio frequency energy and, if not installed and used in accordance with the instructions, may cause harmful interference to radio communications. However, there is no guarantee that interference will not occur in a particular installation. If this equipment does cause harmful interference to radio or television reception, which can be determined by turning the equipment off and on, the user is encouraged to try to correct the interference by one of the following measures:

- Reorient or relocate the receiving antenna.
- Increase the separation between the equipment and receiver.
- Connect the equipment into an outlet on a circuit different from that to which the receiver is connected.
- Consult the dealer or an experienced radio/TV technician for help.

FCC Caution:

Any changes or modifications not expressly approved by the party responsible for compliance could void the user's authority to operate this equipment.

This device complies with Part 15 of the FCC Rules. Operation is subject to the following two conditions:

- (1) This device may not cause harmful interference, and
- (2) This device must accept any interference received, including interference that may cause undesired operation.

FCC Radiation Exposure Statement:

This equipment complies with FCC radiation exposure limits set forth for an uncontrolled environment. This equipment should be installed and operated with minimum distance 20cm between the radiator & your body. This transmitter must not be co-located or operating in conjunction with any other antenna or transmitter.

Industry Canada Statement

This device complies with Industry Canada RSS-210 and CAN ICES-3(B)/NMB-3(B). Operation is subject to the following two conditions:

- (1) this device may not cause interference, and
- (2) this device must accept any interference, including interference that may cause undesired operation of the device.

Le présent appareil est conforme aux CNR d'Industrie Canada applicables aux appareils radio RSS-210. L'exploitation est autorisée aux deux conditions suivantes :

- (1) l'appareil ne doit pas produire de brouillage, et
- (2) l'utilisateur de l'appareil doit accepter tout brouillage radioélectrique subi, même si le brouillage est susceptible d'en compromettre le fonctionnement.

This transmitter must not be co-located or operating in conjunction with any other antenna or transmitter.

Cet émetteur ne doit pas être Co-placé ou ne fonctionnant en même temps qu'aucune autre

antenne ou émetteur.

Caution Exposure:

This device meets the exemption from the routine evaluation limits in section 2.5 of RSS102 and users can obtain Canadian information on RF exposure and compliance.

Le dispositif répond à l'exemption des limites d'évaluation de routine dans la section 2.5 de RSS102

et les utilisateurs peuvent obtenir des renseignements canadiens sur l'exposition aux RF et le respect.

This equipment should be installed and operated with a minimum distance of 20 centimeters between the radiator and your body.

Cet équipement doit être installé et utilisé avec une distance minimale de 20 centimètres entre le radiateur et votre corps.