

User Manual

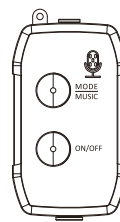
Curtain Lights

Specifications

Color	RGB
Power supply	Adapter
Input voltage	100-240V
Control method	Remote/ APP Control / Control box
Working temperature	-25 C~50 C

Dimmable,16Million Color,Music Sync-, App Control, Local control.

⚠ Please note that all colorful string lights cannot be DIY cut !



Mode/Music:
Long press the button for three seconds to cycle in sequence the three modes: scene mode, music mode, and monochromatic mode.
In the monochromatic mode, click the button to swotch light colors. All the colors loop on sequence; in the music mode, click the button to switch to the next reactive mode. All reactive modes loop in sequence; in the scene mode, click the button to switch to the next scene. All the scene modes loop in sequence.

On/Off: Short press to turn on/off the LED string light.

- 01 -

IR Remote Controller 40 KEY

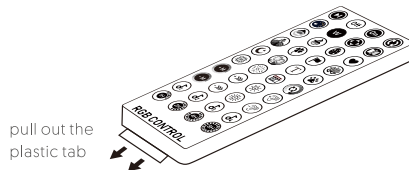


1. Pause/ Run Button
2. Turn On/ Off.
- 3.All modes in cycle button.
- 4.Color wheel, press to select color.
- 5.Cool white and warm white button.
- 6.Flip horizontally.
- 7.shift upward/downward/left/right, flash, solid.
- 8.15 theme scenes button.

- 02 -

- 9.Theme single scene mode loop, switching one every 30 seconds.
- 10.Single scene mode and music mode switch from previous to next.
- 11.Scene mode speed adjustment (+/-).
- 12.LED brightness adjustmnet (+/-).
- 13.Music mode sensitivity adjustment (+/-).
- 14.4 music modes.
- 15.timer: 1 hour, 2 hours, 4 hours, 8 hours.

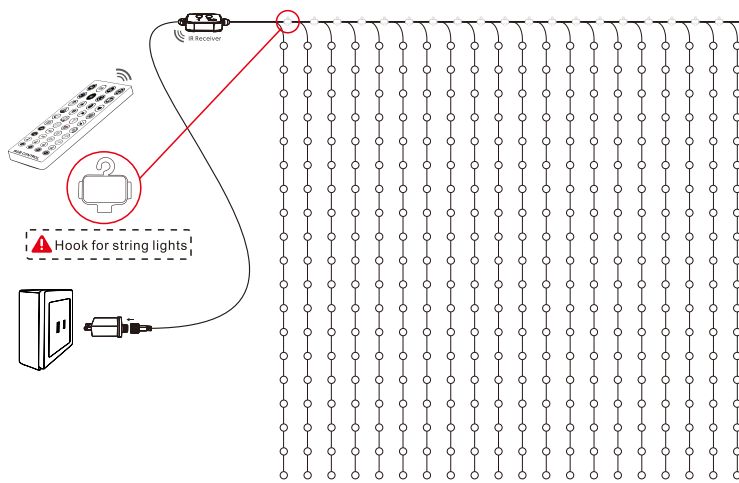
Please pull out the plastic tab from the bottom of the IR remote to ensure that the battery is powered properly.



Make sure the IR remote aims at the IR receiver within the sensing distance. The angle of the IR receiver is 120 and the sensing distance is 5 meters. Please remotely control within the sensing range.

- 03 -

Installation Diagram



- 04 -

Setting Smart Life App

1.Download the "Smart Life"APP from APP Store or Google Play Market, or scan the QR code and install the "Smart Life" for either IOS or Android.



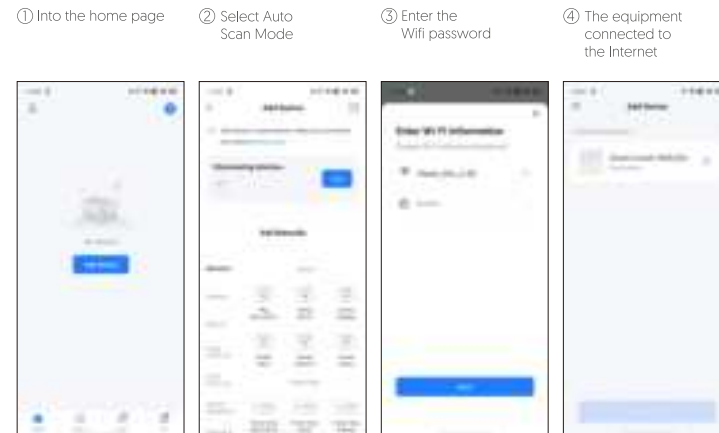
- 05 -

- 2.Once downloaded, the app will ask you to register your account.
- 3.Type your email,click to get verification code it will be sent to your email.
- 4.Type verification code to complete registration.

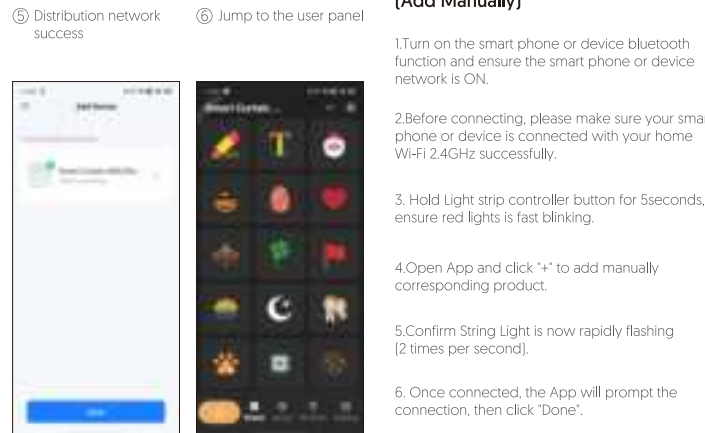
Connect with mobile phone (Auto Scan)

- 1.Turn on the smart phone.
- 2.Before connecting, please make sure your smart phone or device is connected with your home Wi-Fi 2.4GHz successfully.
3. Hold controller the button for 5 seconds, ensure red lights is now rapidly flashing (2 times per second).
- 4.Open the application, click "+" to select "Auto Scan Mode", and then start to automatically scan products that can be connected.
5. Once connected, the App will prompt the connection, then click "Done".
6. Now you can control the Smart LED Lighting through Smart Life App.

- 06 -



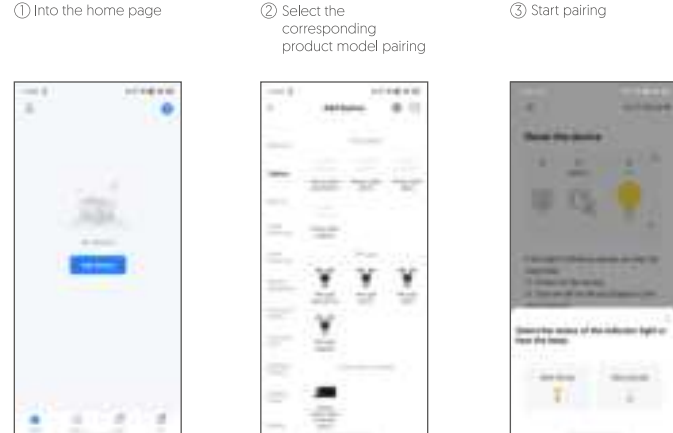
- 07 -



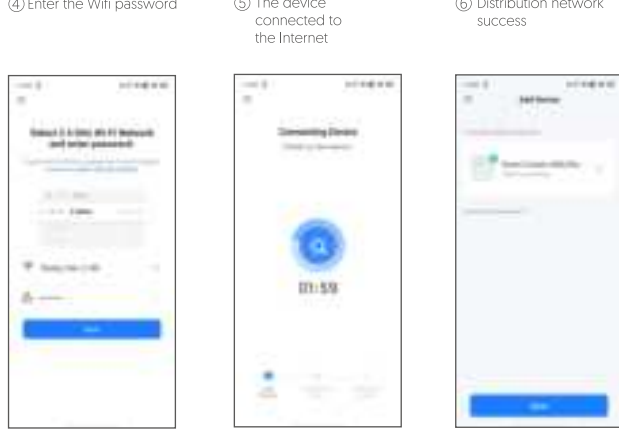
- 08 -

Connect with mobile phone (Add Manually)

- 1.Turn on the smart phone or device bluetooth function and ensure the smart phone or device network is ON.
- 2.Before connecting, please make sure your smart phone or device is connected with your home Wi-Fi 2.4GHz successfully.
3. Hold Light strip controller button for 5seconds, ensure red lights is fast blinking.
- 4.Open App and click "+" to add manually corresponding product.
- 5.Confirm String Light is now rapidly flashing (2 times per second).
6. Once connected, the App will prompt the connection, then click "Done".

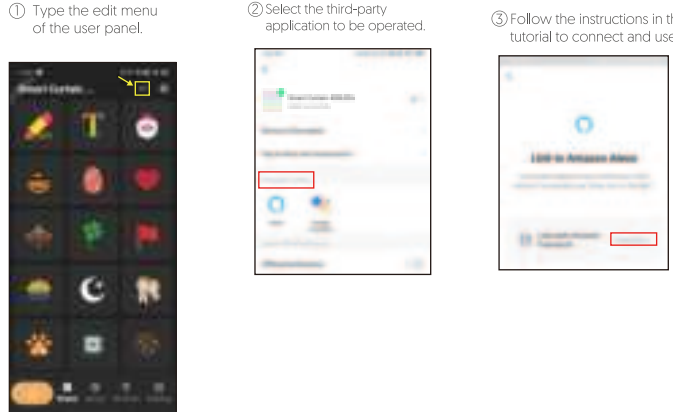


- 09 -



- 10 -

Support 3rd Party Control



- 11 -

Warm Tips

- Please check whether the device is connected with power and your phone is connected with Wi-Fi.
- Check routers: If the router is dual-band router, please select a 2.4GHz network to add device. You also need to open the router broadcasting function.
- Set up the wireless router: Set encryption method as WPA2-PSK authorization type as AES, or set both as auto. The Wireless mode cannot be only 5GHz. Please name router Wi-Fi in English. In order to stay strong Wi-Fi signal, please keep device and router within a certain distance.
- Check whether connected devices have reached the Maximum number router connection. If so, please try to turn off the Wi-Fi connection of some devices.
- Make sure router wireless MAC filtering function is enabled.
- Remove the device from the filter list and make sure that router is not prohibiting device from connection.
- Make sure the entered password is correct when adding a new device.
- App for more operations, please refer to the corresponding application tutorial.

FCC Statement

This device complies with part 15 of the FCC Rules. Operation is subject to the following two conditions:
[1] This device may not cause harmful interference, and [2] This device must accept any interference received, including interference that may cause undesired operation.

FCC Radiation Exposure Statement

The antennas used for this transmitter must be installed to provide a separation distance of at least 20 cm from all persons and must not be co-located for operating in conjunction with any other antenna or transmitter.

Warranty description

This product has one-year warranty from the day after signing. Please contact us if you have any questions or issues.

- 12 -

FCC Warning Statement

Changes or modifications not expressly approved by the party responsible for compliance could void the user's authority to operate the equipment. This equipment has been tested and found to comply with the limits for a Class B digital device, pursuant to Part 15 of the FCC Rules. These limits are designed to provide reasonable protection against harmful interference in a residential installation. This equipment generates uses and can radiate radio frequency energy and, if not installed and used in accordance with the instructions, may cause harmful interference to radio communications.However, there is no guarantees that interference will not occur in a particular installation. If this equipment does cause harmful interference to radio or television reception, which can be determined by turning the equipment off and on, the user is encouraged to try to correct the interference by one or more of the following measures:
---Reorient or relocate the receiving antenna.
---Increase the separation between the equipment and receiver.
---Connect the equipment into an outlet on a circuit different from that to which the receiver is connected.
---Consult the dealer or an experienced radio/TV technician for help.

