

A

B

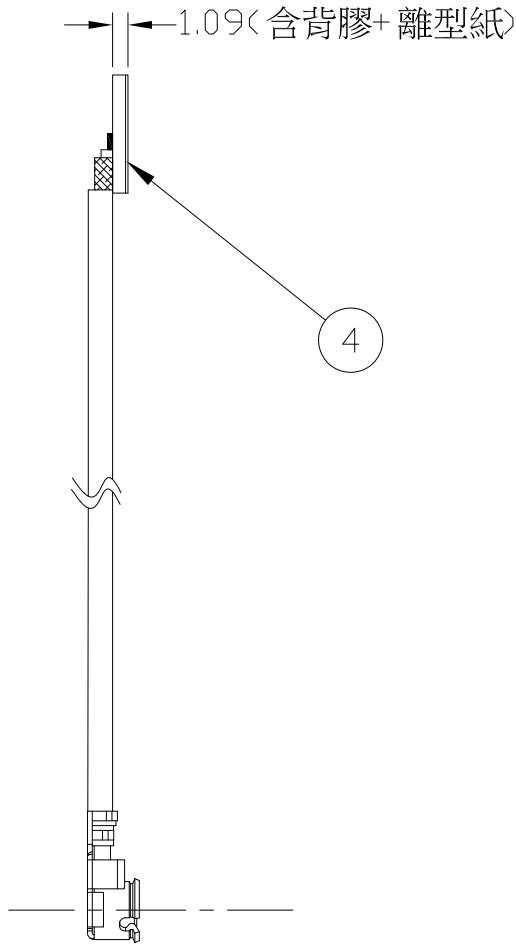
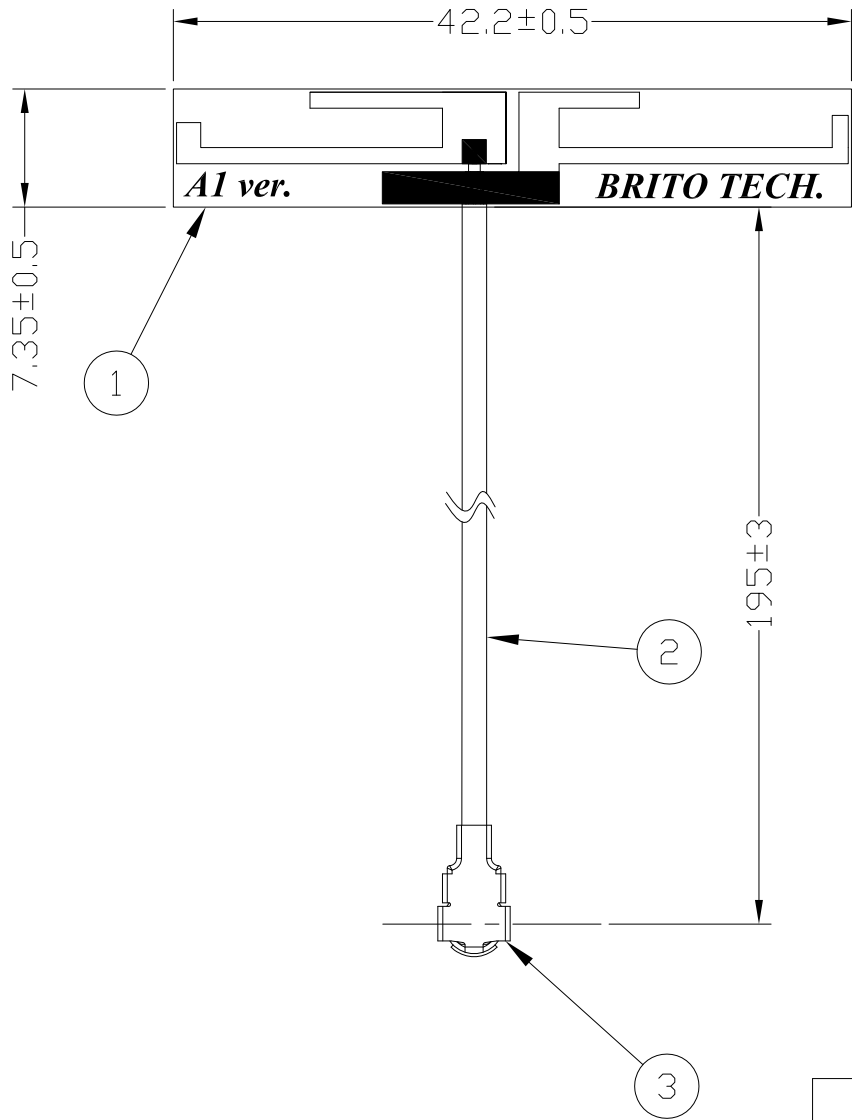
C

D


E

F

R E V I S I O N S				
REV	DESCRIPTION	LOCATION	DRAWN	DATE
△	圖面新增		ALGER	2015/8/5
△	PCB 圖號更改		ALGER	2015/9/7

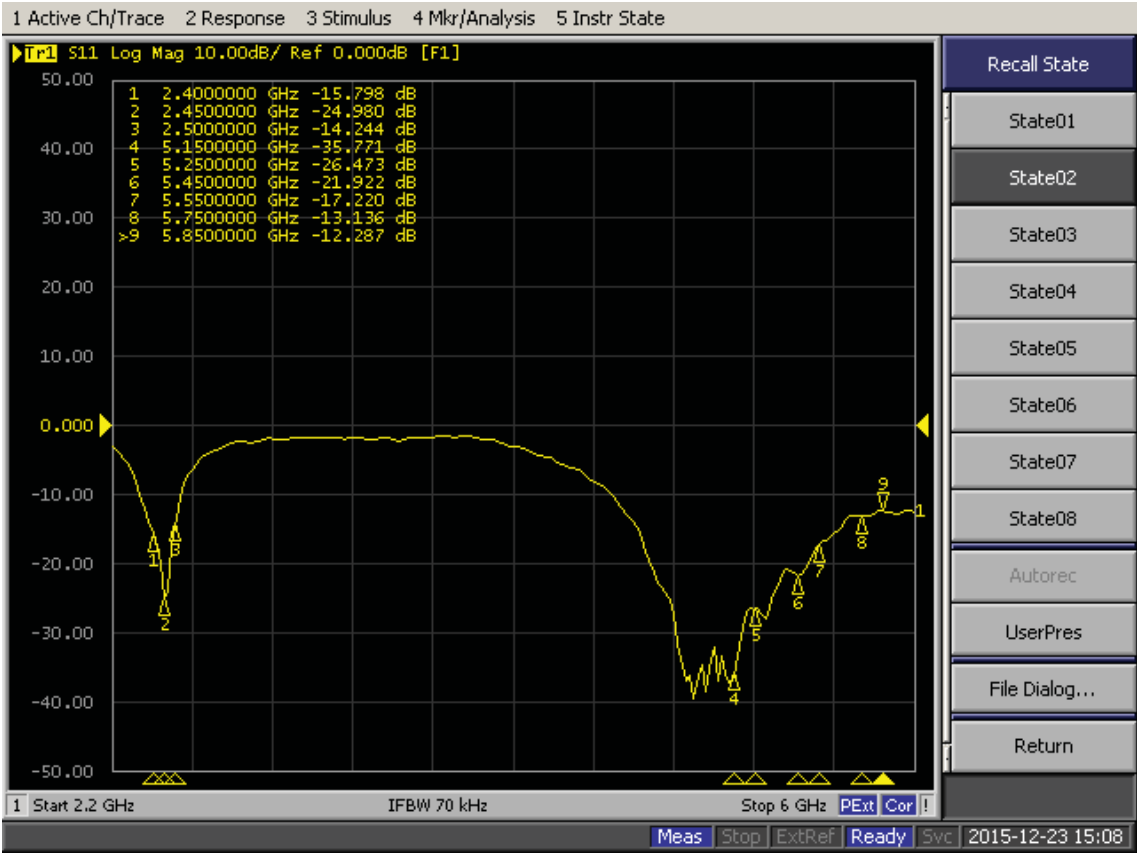


4	N/A	TISSUE TAPE	3M 9448A (42*7.3*0.29T)	CPN-TT-1508-0018-A	1PCS	N/A
3	N/A	CONNECTOR	IPEX	CPN-CA-1508-0017-A	1PCS	N/A
2	N/A	CABLE	Ø1.13mm CABLE;BLACK	CPN-CA-1508-0017-A	1PCS	N/A
1	EM60-PCB	PCB	FR-4	CPN-PCB-1508-0016-A△	1PCS	N/A
ITEM	PART NO.	PART NAME	MATERIAL	DWG NO.	QT'Y	REMARKS

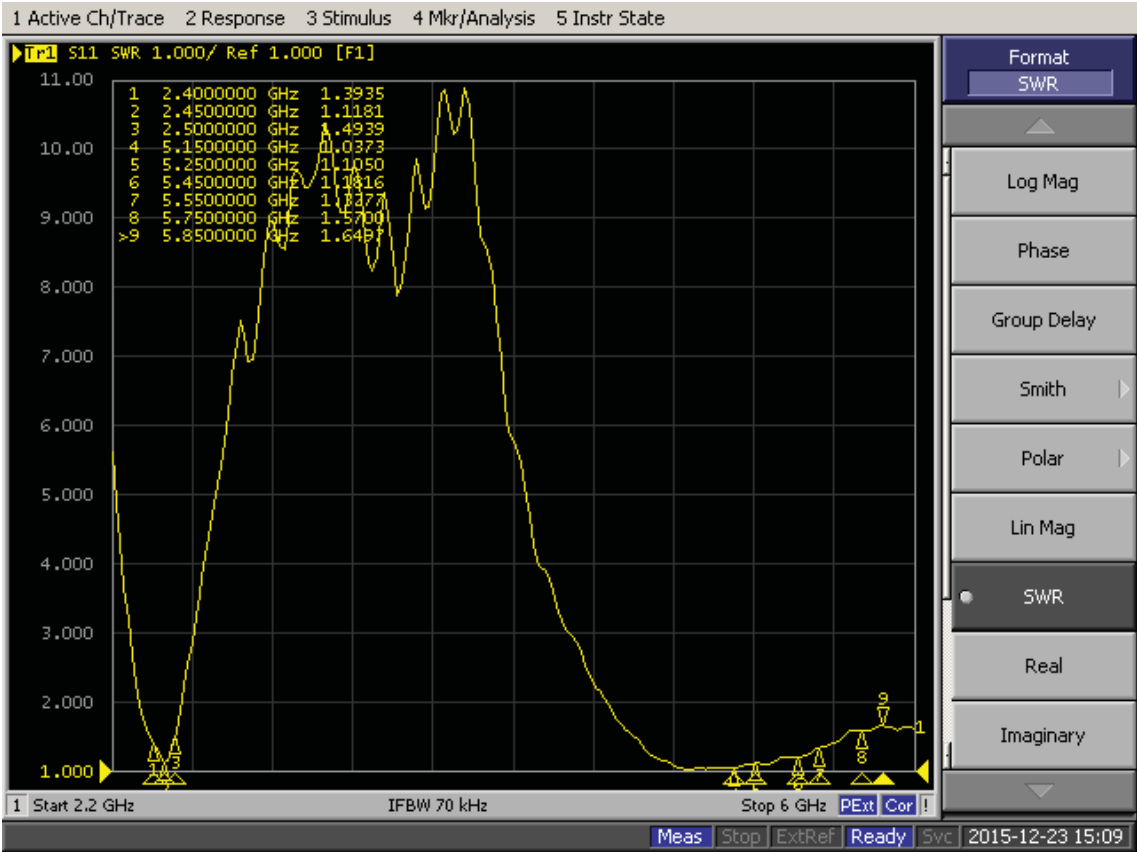
RANGE	TOLERANCE	BRITO 昀陽科技有限公司			MODEL NAME	
X.xx	± 0.10				WLAN ANTENNA	
X.x	± 0.15	MATERIAL: See TABLE	DRAWN: ALGER	DATE: 2015/9/7	TITLE: WLAN EMBEDDED ANTENNA	
X	± 0.25	FINISH: WLAN ANTENNA	DESIGN: JERRY	DATE: 2015/9/7	SIZE: A3	PART NO. DB1EM60-I0195
 THE 3RD PROJECTION		UNIT: mm	APPROVED: JOHN	DATE: 2015/9/7	SCALE : N/A	
					SHEET 1 OF 1	

DWG NO. WLA-EM-1508-0008-B				REV.	B
-------------------------------	--	--	--	------	---

RETURN LOSS



VSWR



## Chamber

Test Date	2016/1/21										
Trade Name											
App.No											
Model Name											
Test Mode Free Space & Talking Position											
Communication System											
Channel	2400	2450	2500	5150	5250	5310	5320	5330	5550	5725	5850
Note	WLAN-Main										
Ant. Port Input Pwr. (dBm)	0	0	0	0	0	0	0	0	0	0	0
Tot. Rad. Pwr. (dBm)	-2.23441	-1.60383	-1.66381	-1.93996	-1.72604	-0.897183	-1.61477	-1.96146	-2.84483	-3.22574	-3.22759
Peak EIRP (dBm)	4.22906	4.62636	4.54261	4.24442	4.40157	5.80113	4.88413	3.99902	4.15698	3.30414	3.48354
Directivity (dBi)	6.46347	6.23019	6.20642	6.18437	6.12761	6.69831	6.4989	5.96049	7.00181	6.52988	6.71112
Efficiency (dB)	-2.23441	-1.60383	-1.66381	-1.93996	-1.72604	-0.897183	-1.61477	-1.96146	-2.84483	-3.22574	-3.22759
Efficiency (%)	59.7805	69.1221	68.174	63.9741	67.2042	81.3358	68.9481	63.6581	51.9418	47.5802	47.5599

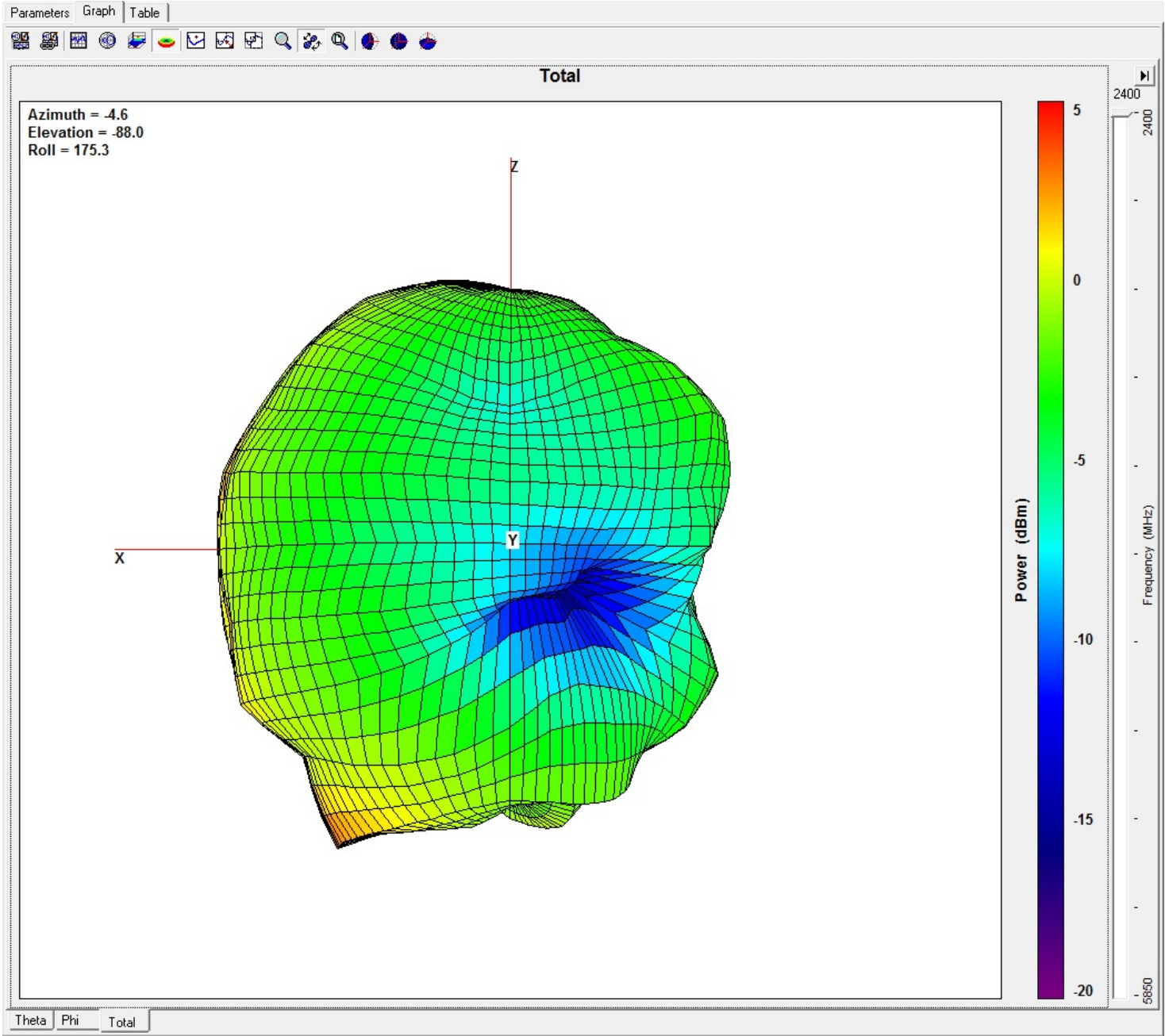
Job No.:160121-Dbii-2400

Date:2016-01-21

Time:15:05

Tested by: John

Center freq.(MHz): : 2400



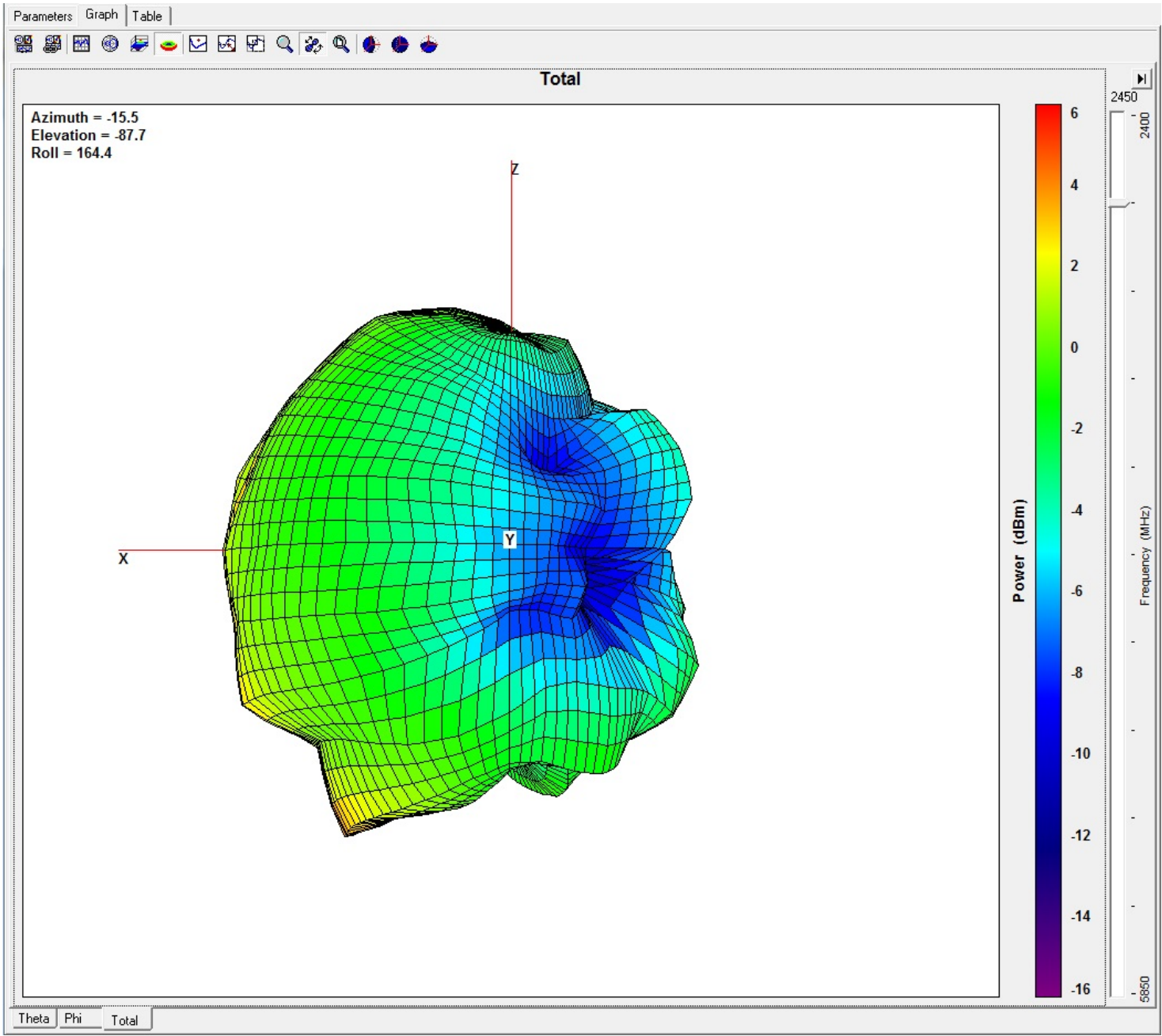
Job No.:160121-Dbii-2450

Date:2016-01-21

Time:15:05

Tested by: John

Center freq.(MHz): : 2450



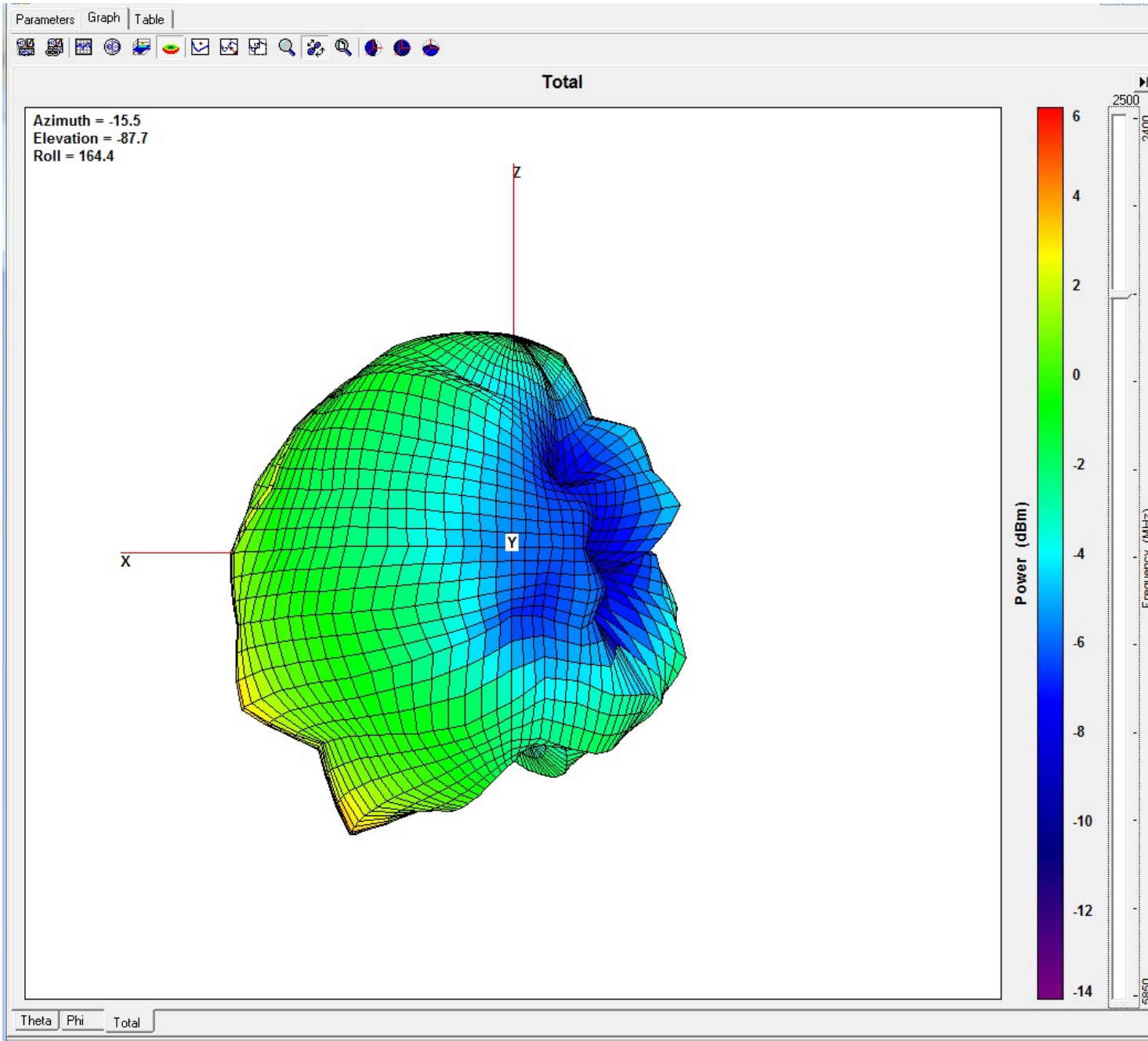
Job No.:160121-Dbii-2500

Date:2016-01-21

Time:15:05

Tested by: John

Center freq.(MHz): : 2500

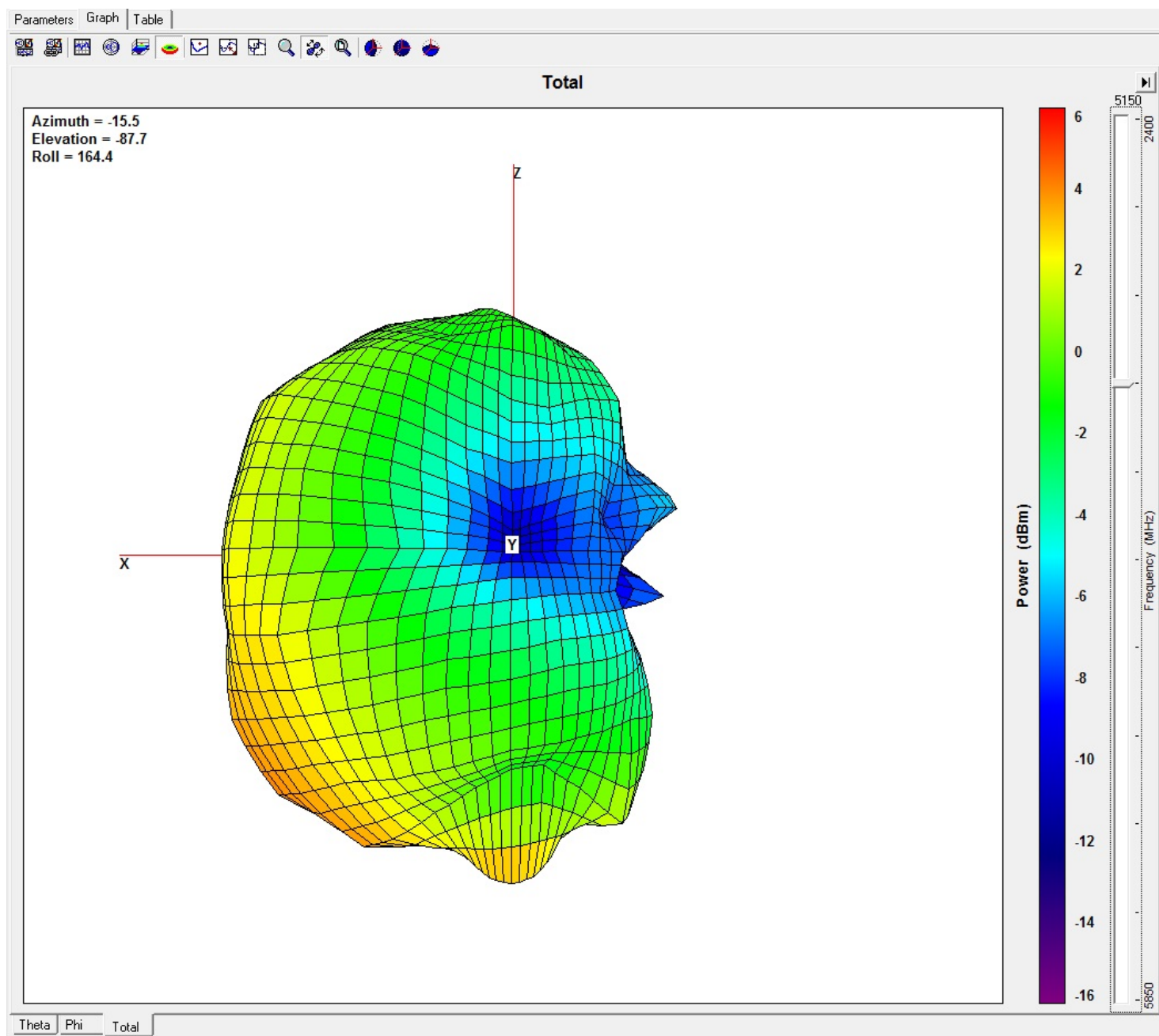




Time:15:05

Tested by: John

Center freq.(MHz): : 5150



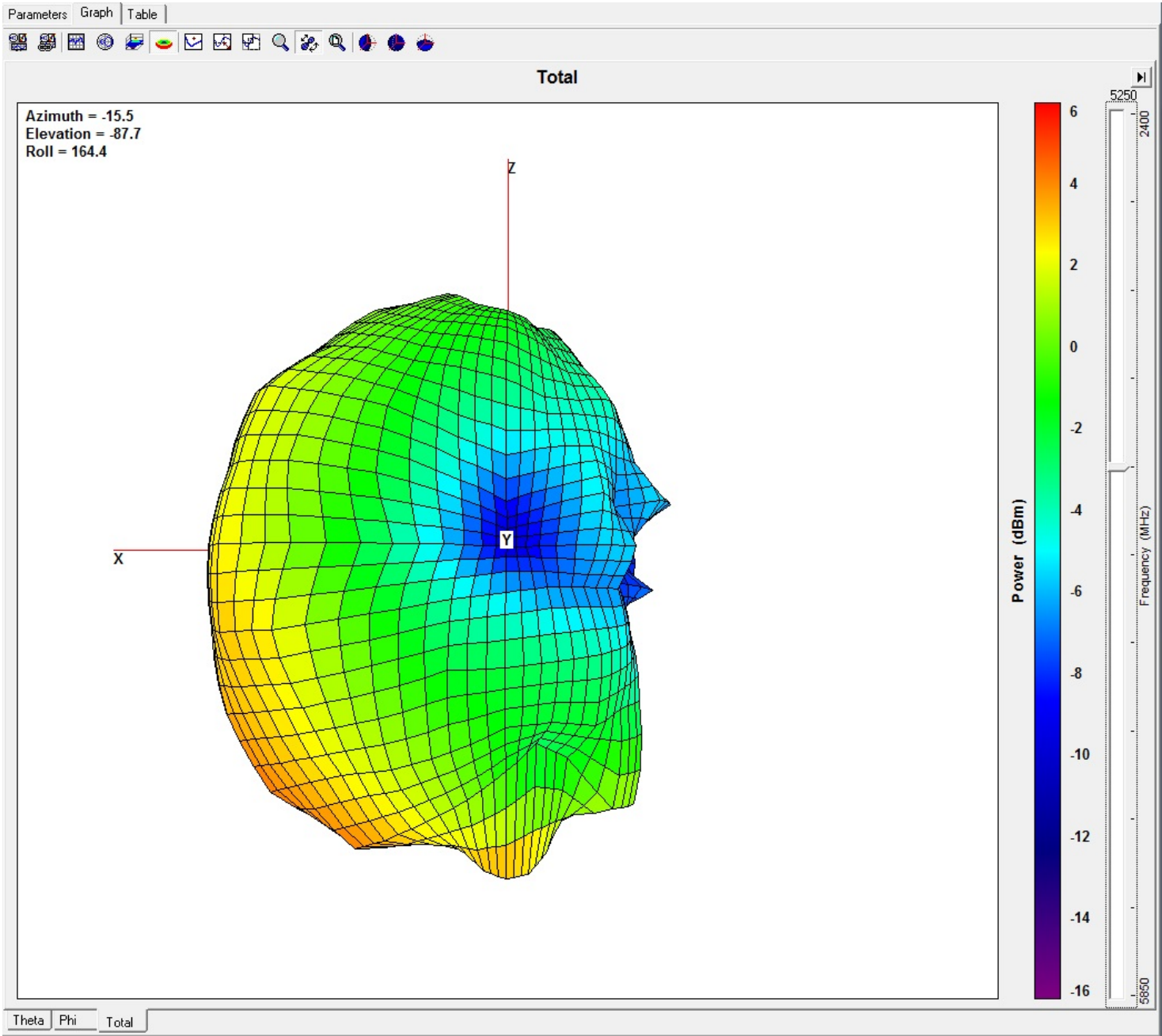
Job No.:160121-Dbii-5250

Date:2016-01-21

Time:15:05

Tested by: John

Center freq.(MHz): : 5250





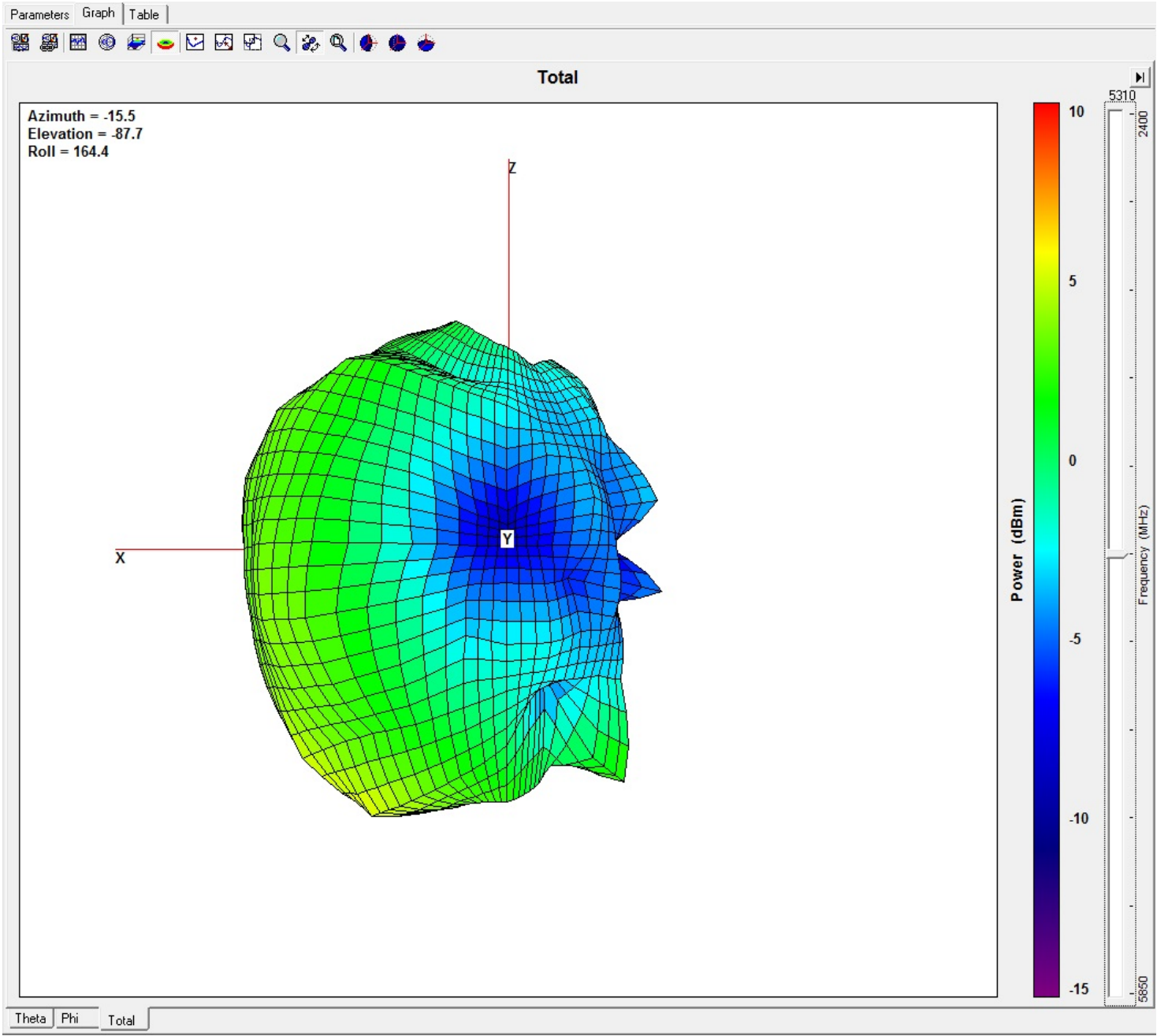
Job No.:160121-Dbii-5310

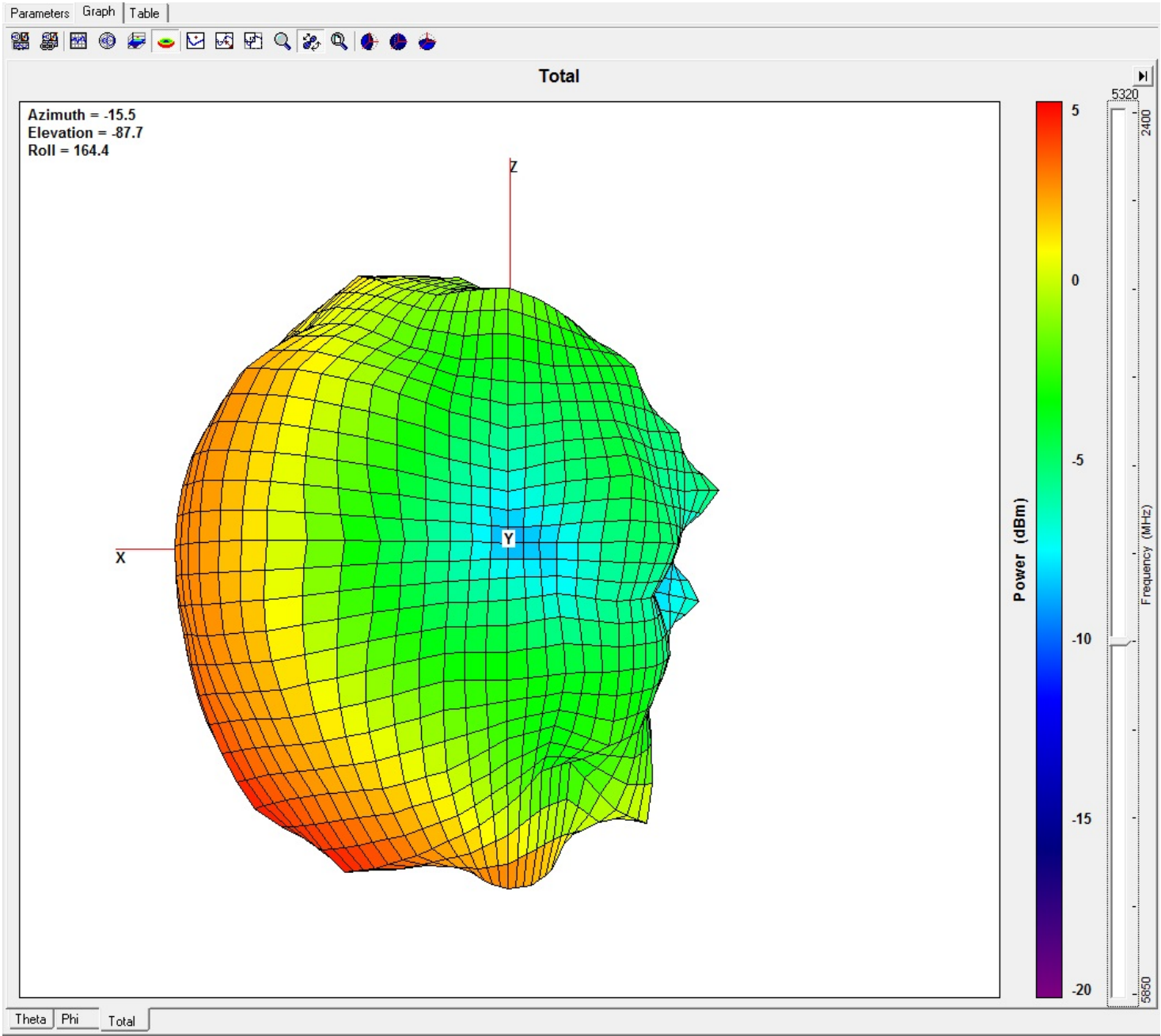
Date:2016-01-21

Time:15:05

Tested by: John

Center freq.(MHz): : 5310





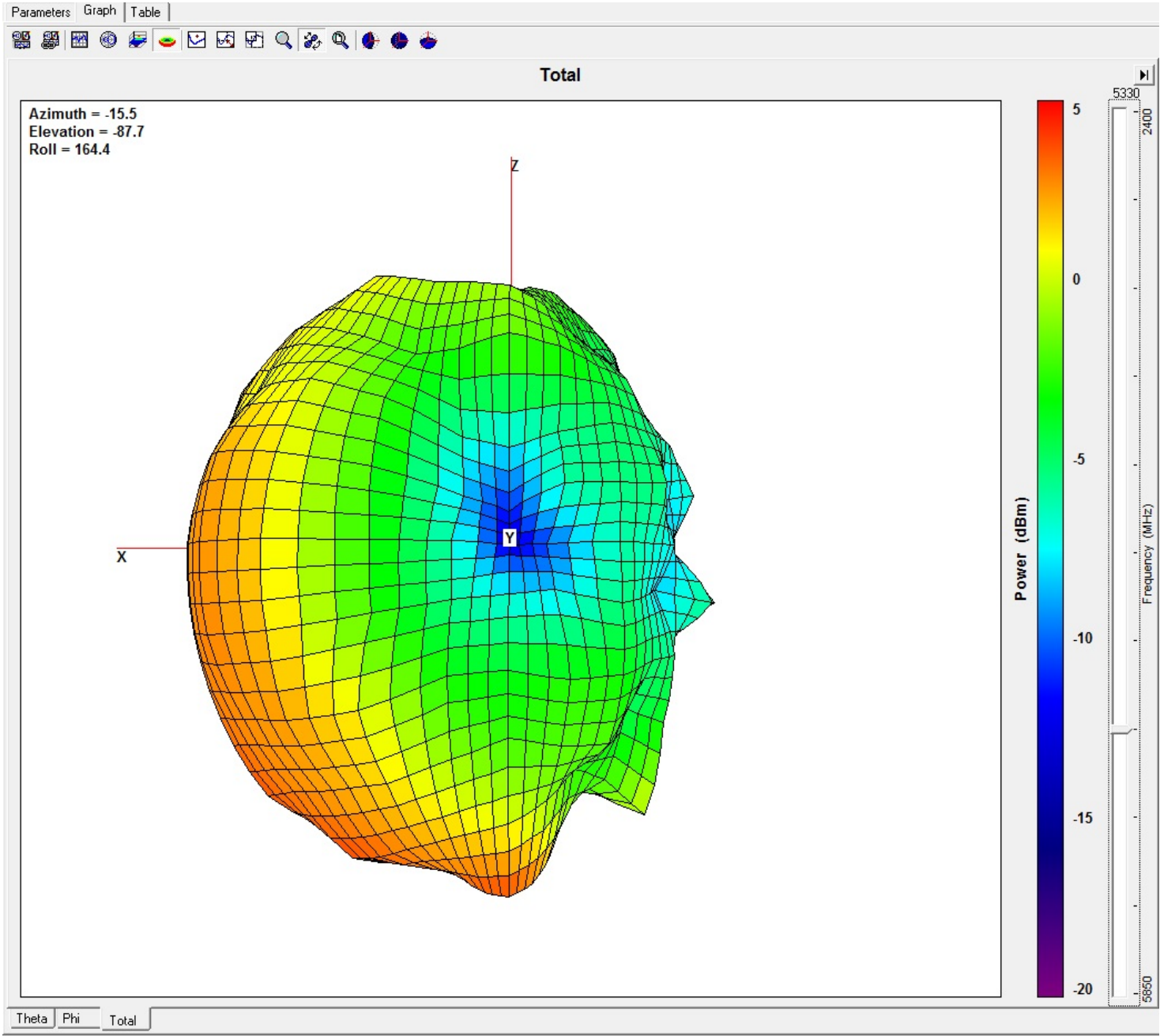
Job No.:160121-Dbii-5330

Date:2016-01-21

Time:15:05

Tested by: John

Center freq.(MHz): : 5330



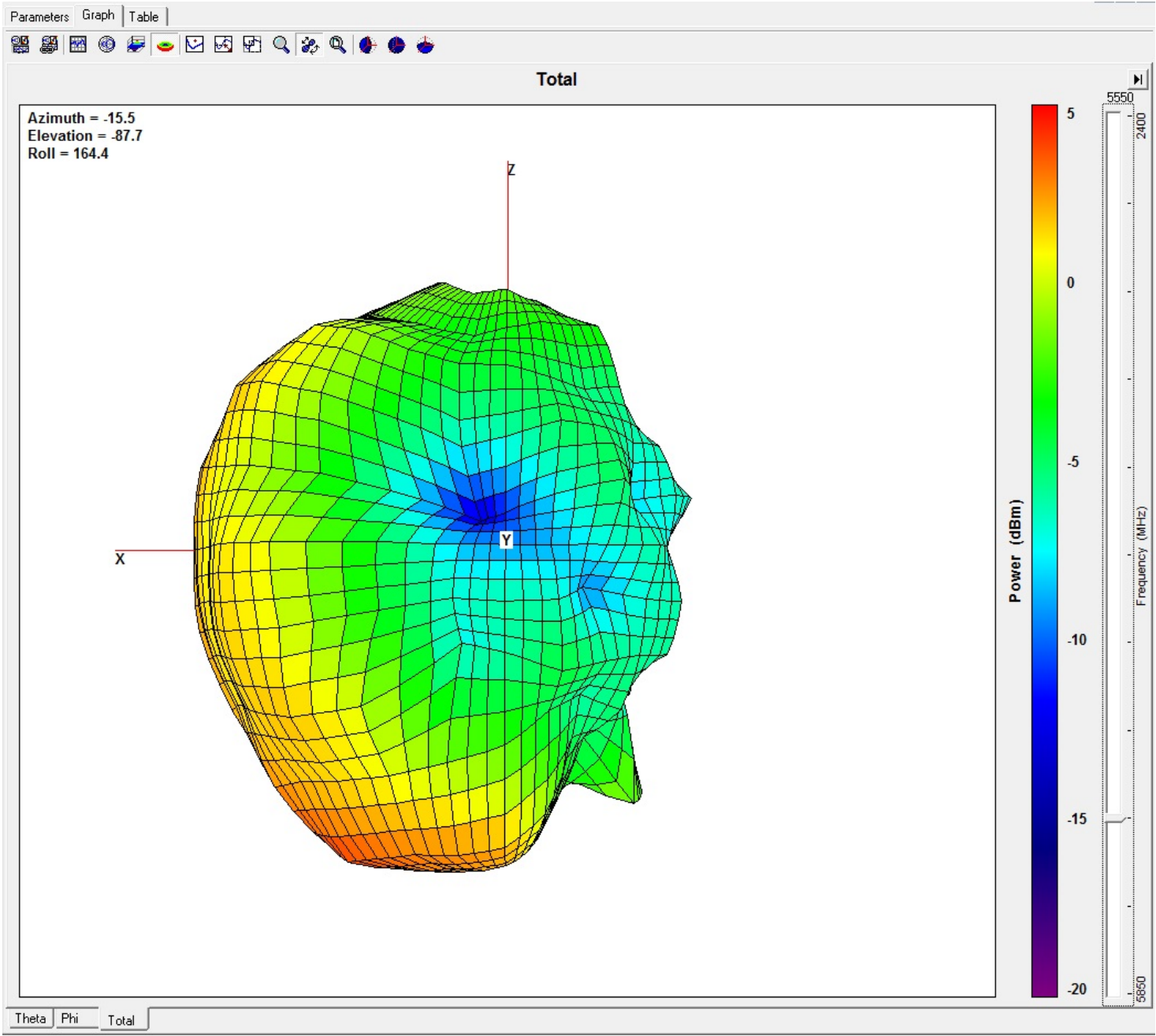
Job No.:160121-Dbii-5550

Date:2016-01-21

Time:15:05

Tested by: John

Center freq.(MHz): : 5550



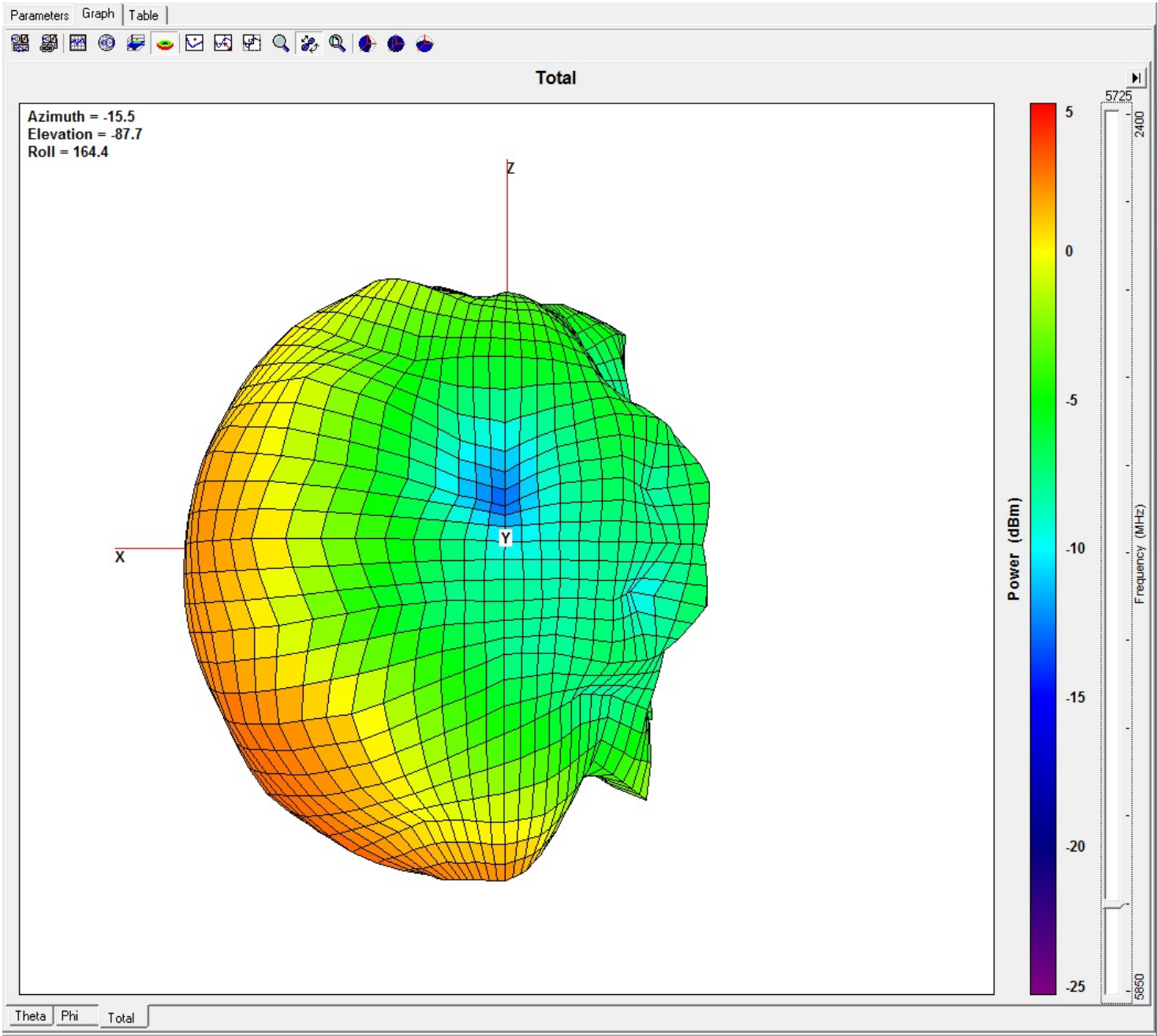
Job No.:160121-Dbii-5725

Date:2016-01-21

Time:15:05

Tested by: John

Center freq.(MHz): : 5725





Job No.:160121-Dbii-5850

Date:2016-01-21

Time:15:05

Tested by: John

Center freq.(MHz): : 5850

