

EXHIBIT 8
EQUIPMENT PHOTOGRAPHS

This exhibit contains a series of digital photographs, as required by § 2.1033(c)(12) which reveal equipment construction and layout, including internal views showing component placement and chassis assembly.

Table E18.1. Equipment photographs—photo numbers and description.

Photo Number	Description
1	Top of DTSA PCB
2	Bottom of DTSA PCB
3	Top of DTSA PCB with RF shields covering radio circuitry removed
4	Bottom of DTSA PCB with RF shields covering radio circuitry removed
5	Overview of DTM (DTSA with plastic housing)



Photo 1. Top of DTSA PCB.



Photo 2. Bottom of DTSA PCB.



Photo 3. Top of DTSA PCB with RF shields covering radio circuitry removed

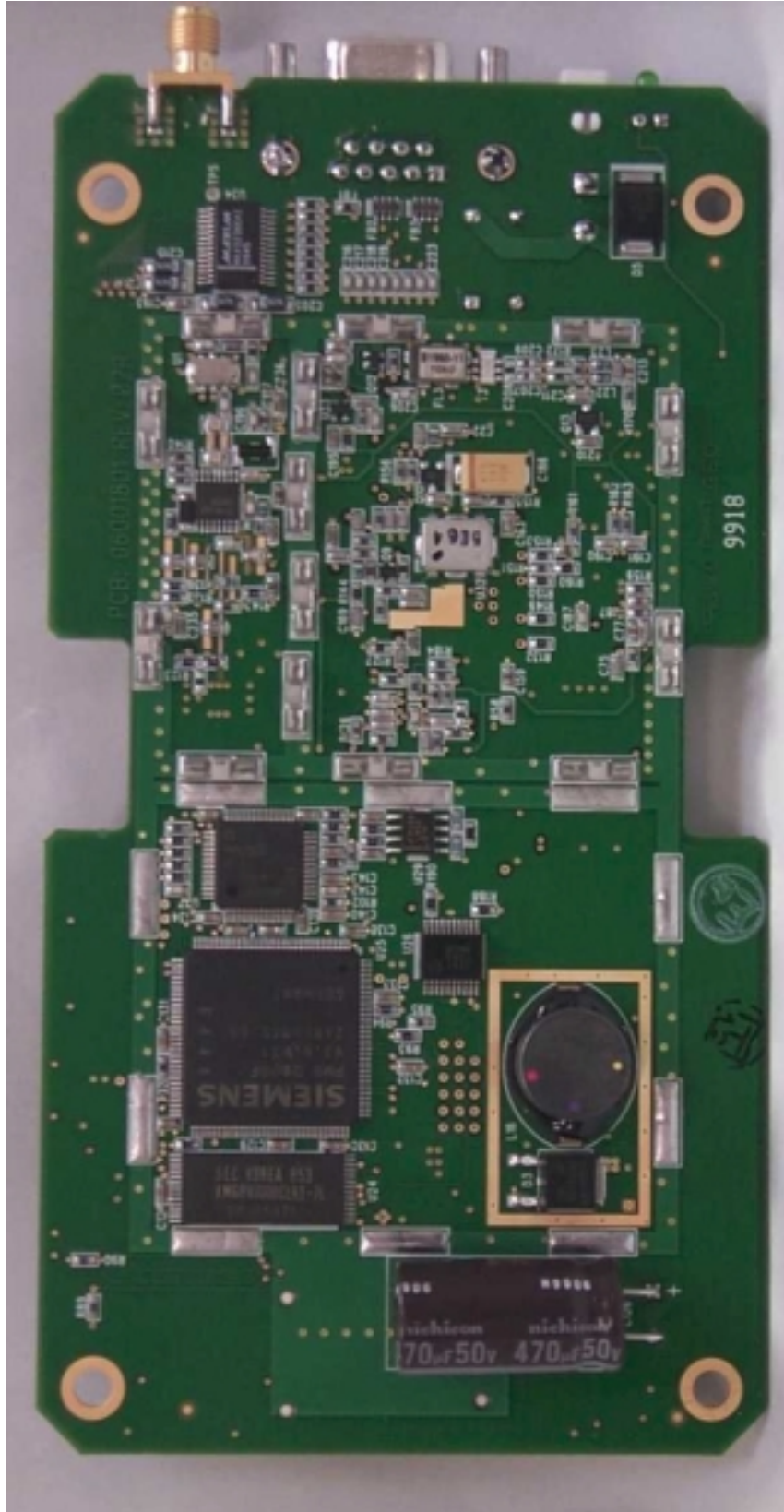


Photo 4. Bottom of DTSA PCB with RF shields covering radio circuitry removed.



Photo 5. Overview of DTM.