

Dongle Antenna Specification

Dongle PCB Antenna

The Nano Dongle antenna adopts the ultra-small antenna, and because of the limited area of PCB, the gain of the antenna will be smaller than that of other antennas. The communication distance can reach about 15 ~ 20 meters. The size of Dongle PCB antenna is 8.8* 2.8mm and the thickness of PCB is 0.6mm. The specific size of the antenna is shown in figure 1, the physical object is shown in figure 2.

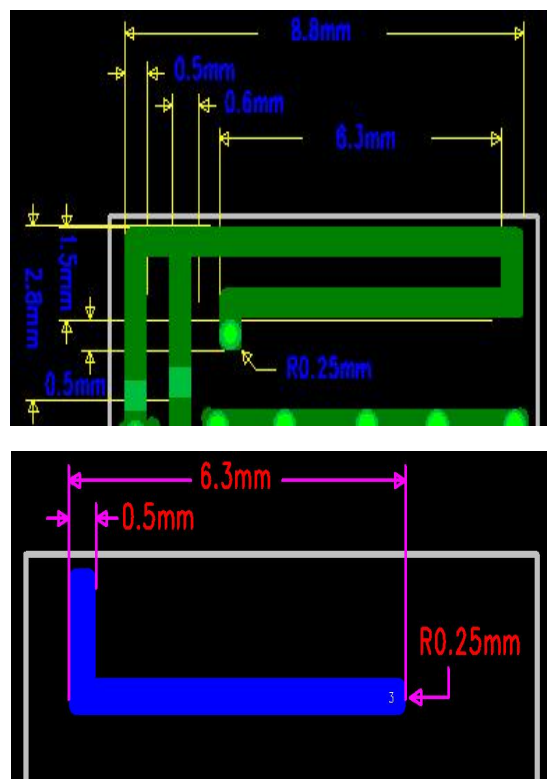


Figure 1 :Nano Dongle

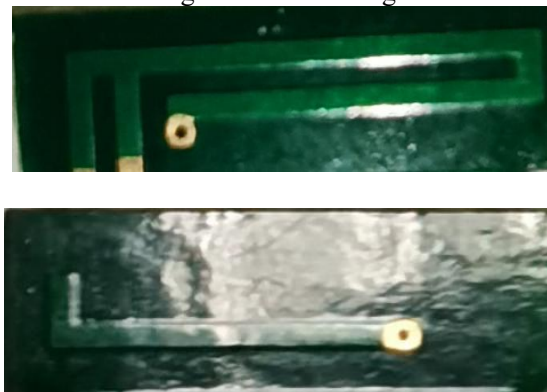
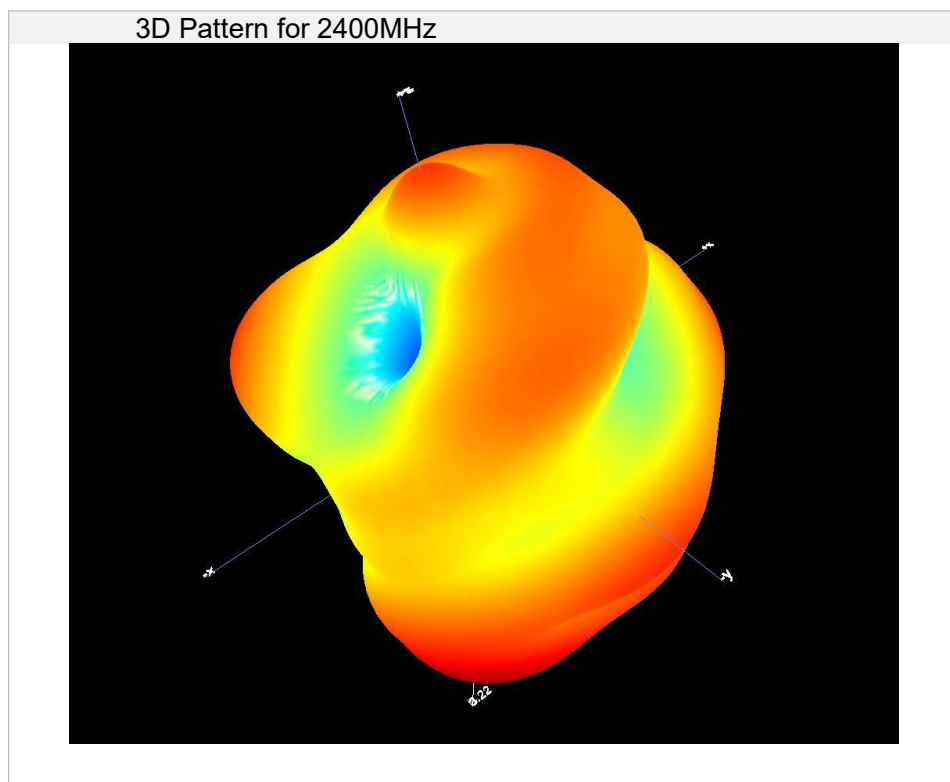


Figure 2: Nano Dongle Antenna

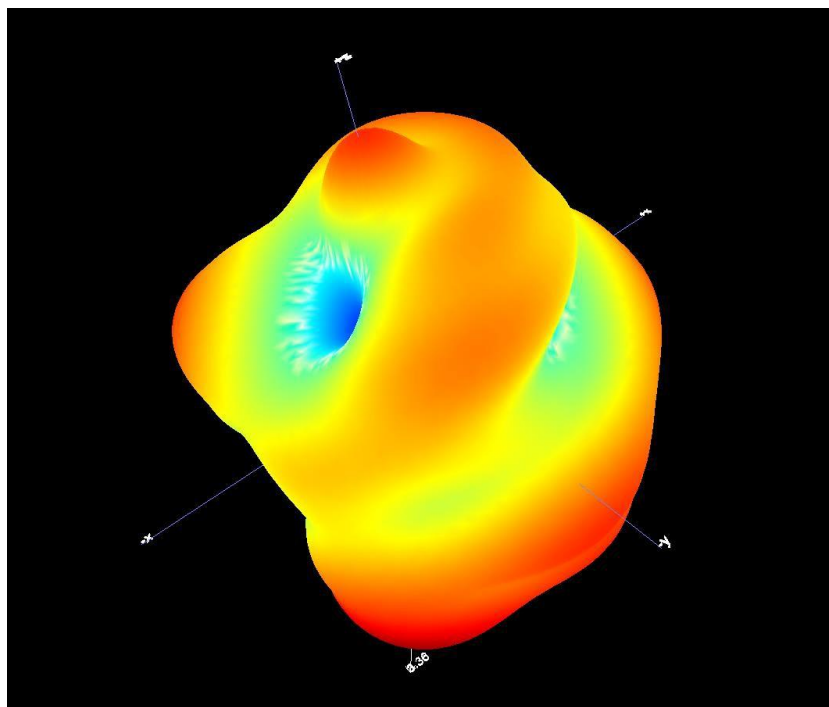
A.1 Gain and Efficiency

| Frequency | Gain (dBi) | Efficiency (%) |
|-----------|-------------|----------------|
| 2400MHz | 3.22 | 57 |
| 2410MHz | 3.14 | 58 |
| 2420MHz | 3.08 | 57 |
| 2430MHz | 3.27 | 56 |
| 2440MHz | 3.29 | 56 |
| 2450MHz | 3.36 | 56 |
| 2460MHz | 3.10 | 54 |
| 2470MHz | 2.87 | 53 |
| 2480MHz | 2.96 | 54 |
| 2490MHz | 2.89 | 53 |
| 2500MHz | 2.45 | 52 |

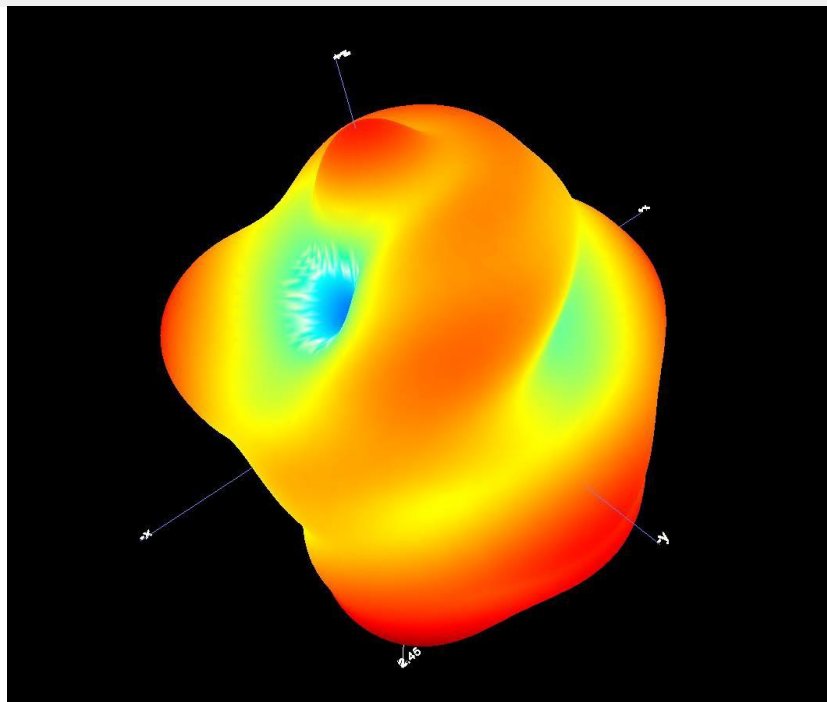
3D Pattern



3D Pattern for 2450MHz

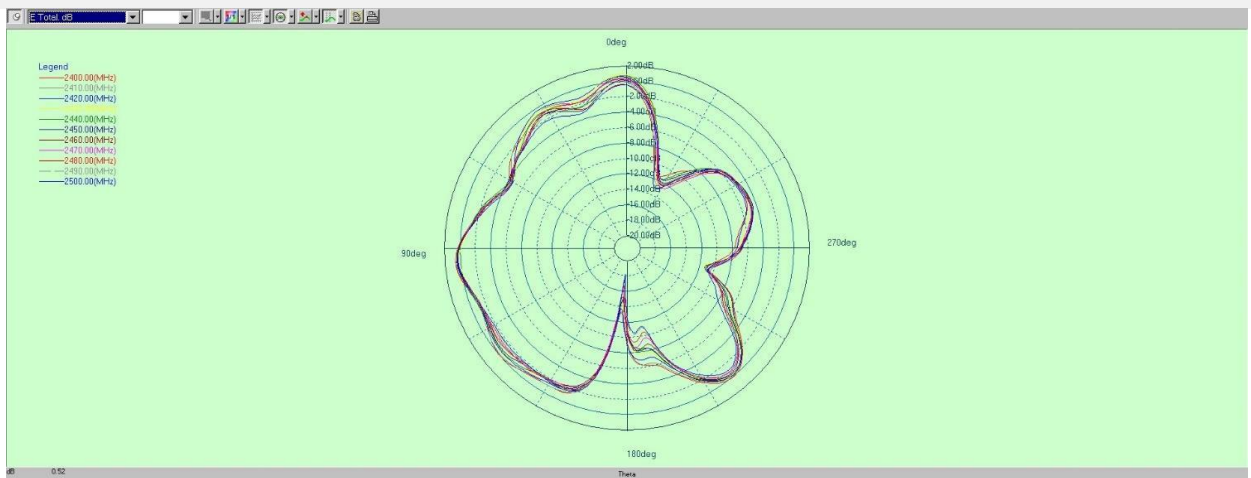


3D Pattern for 2500MHz

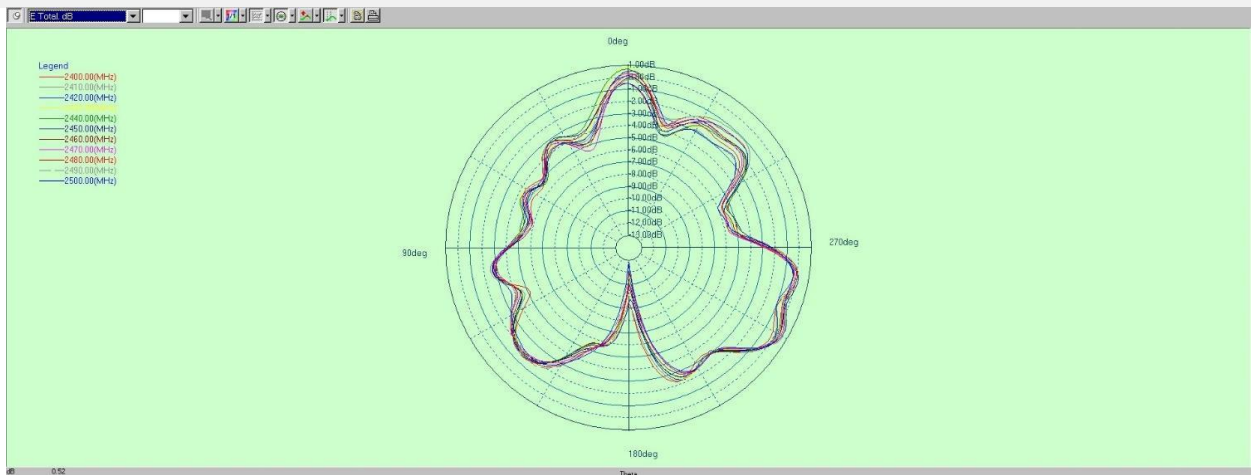


1D Radiation Pattern

PHI=0



PHI=90



THETA=90

