



EXHIBIT 7

Test Setup Photos

Applicant: Nortel Networks

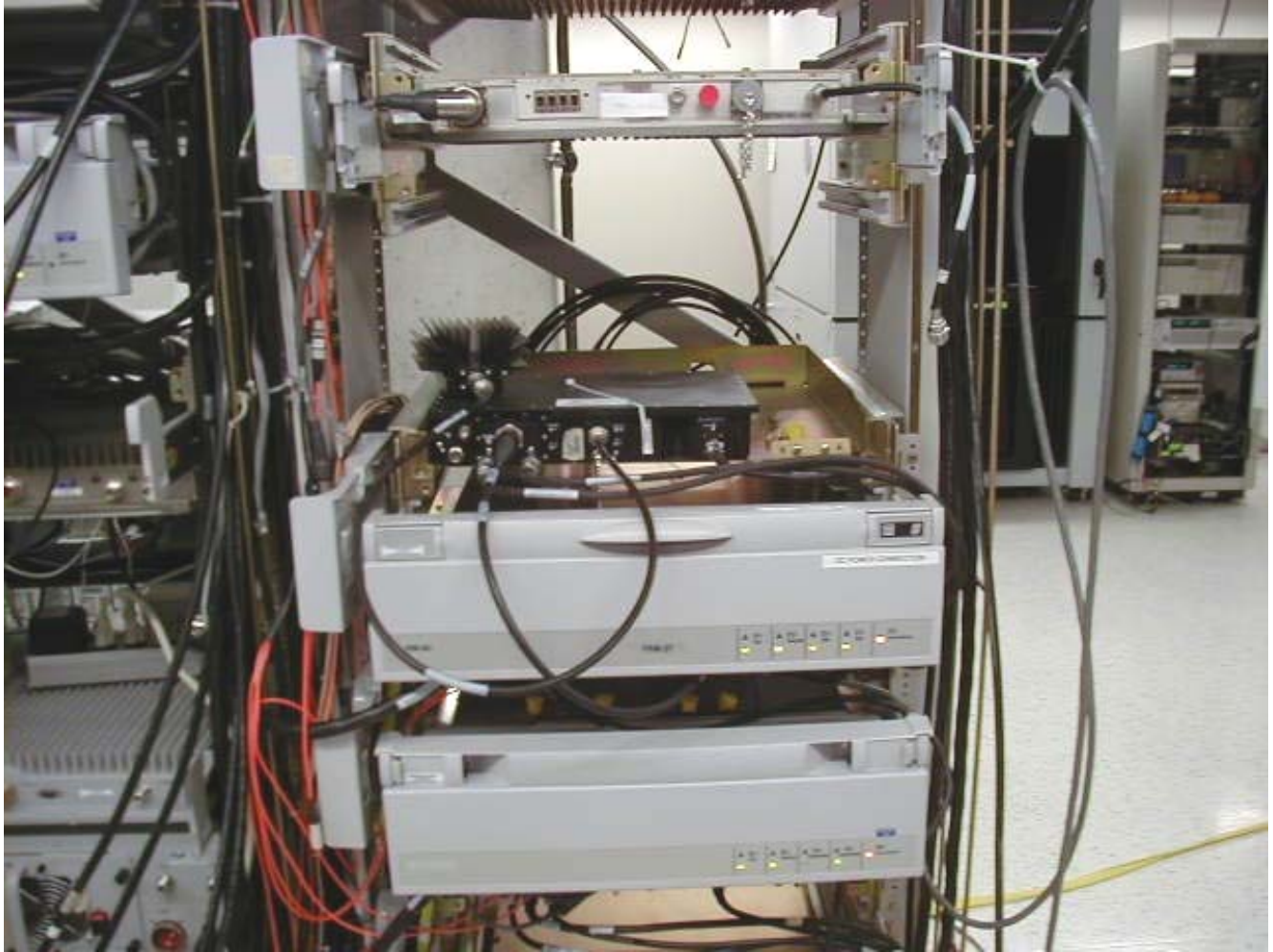
**For Class II Permissive
Change on :**

**FCC: AB6NT800MFRM2-CG
IC: 332D-800MFRM2**



**Test setup for the
Spurious Emission at Antenna Terminals**

This document contains Proprietary information of Nortel Networks. This information is considered to be confidential and should be treated appropriately.



**Radio setup for the
Spurious Emission at Antenna Terminals**

This document contains Proprietary information of Nortel Networks. This information is considered to be confidential and should be treated appropriately.