

| | |
|-----------------------------------|----------|
| 1. Introduce..... | 1 |
| 2. Specification..... | 1 |
| 3. Feature..... | 1 |
| 4. Method of use..... | 1 |
| 4.1 Pairing..... | 1 |
| 4.2 Auto reconnection..... | 1 |
| 4.3 Button function..... | 1 |
| 4.4 Led states..... | 1 |
| 4.5 Support skype..... | 2 |

1. Introduce: The VoIP dongle will enumerate as a USB device as soon as it is plugged in. No driver was required to work with this VOIP dongle.

2. Specification:

Bluetooth Version : V1.2
Supported Profile: Headset, Hands-free
Data Rate(MAX) : 1Mbps
RF Output Power: Class 2
Operation Range: 10m
OS Requirements: Win 98SE/Me/2000/XP
Dimension: 63*18*9mm
Weight: 8.5g
Chip: BC3-Multimedia External

3. Feature:

to create the wireless connection between U70 and BT headset.
to function as radio gateway to be powered by PC or PDA, additional power unnecessary.
to install no software in advance.
to Support skype to enable pick and hang phones by only multifunction key pressing of headset.

4. Method of use:

4.1 pairing: Upon plugging in the USB dongle if the dongle isn't connected or long press the multifunction button on the board after operation stably , it will search new device . It may pair with the device if someone is in the pairing ..

4.2 Auto reconnection: Upon plugging in the USB dongle or short press the multifunction button which may both reconnect with the last paired device. the last paired device need not be in the pairing mode. It just need to be power on and in the idle mode.

4.3 Button function: It is divided into short press and long press.
short press the multifunction button on the board is to reconnect to the last-paired device.short press is define as any time <=2s.
long press the multifunction button on the board is to trigger a new pairing session. Long press is defined as any time >= 2 seconds.

4.4 Led states: only Blue led will blink at an interval of 0.5 second when

the device is in the normal state.

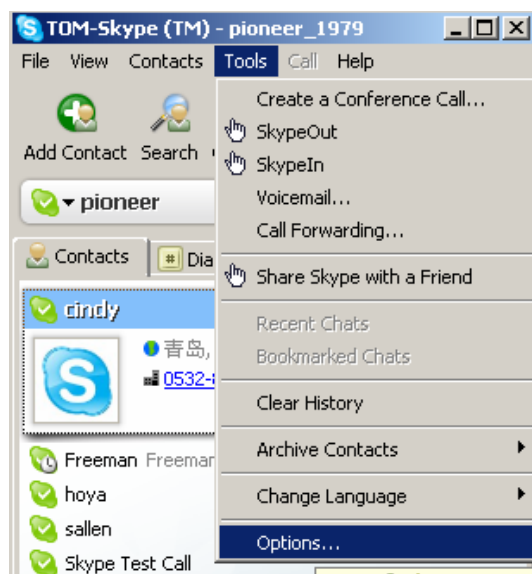
Red led will blink at an interval of 0.5 second when the signal is sent into dongle.and then blue led will blink after short press multifunction button.

Blue & red leds will blink alternatively on and off when dongle is in the pairing.leds blink faster in the short press state than long press.

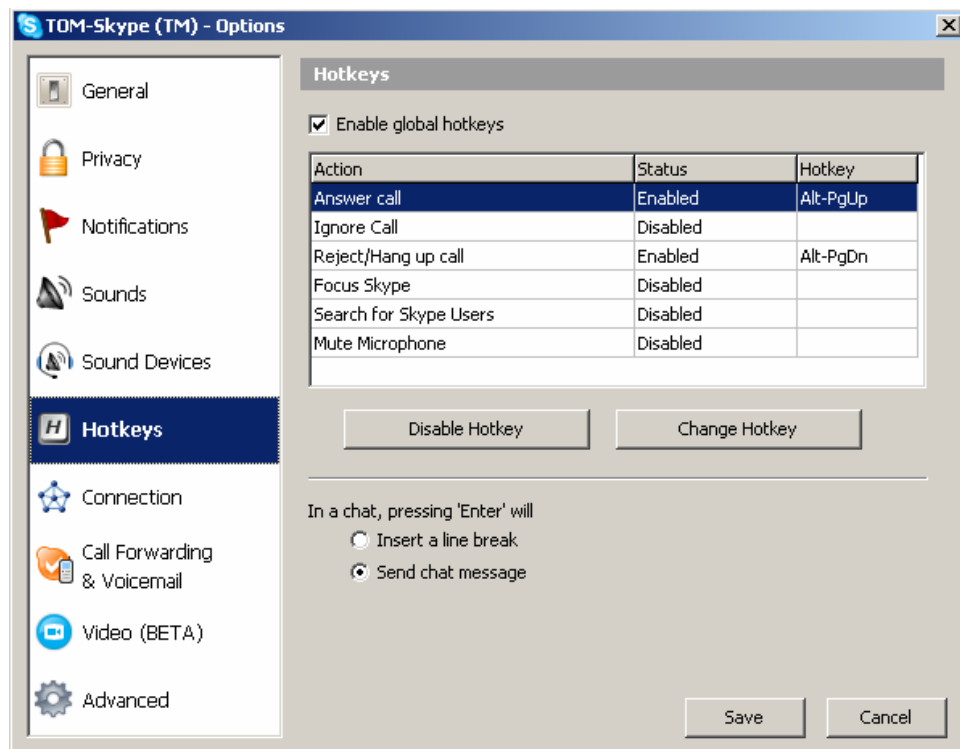
If the dongle is connected with some device ,unplug and plug Blue& red will blink alternatively(0.1s).otherwise they will blink alternatively(0.5s).

4.5 Support skype:When talk with skype,it need the following configuration.

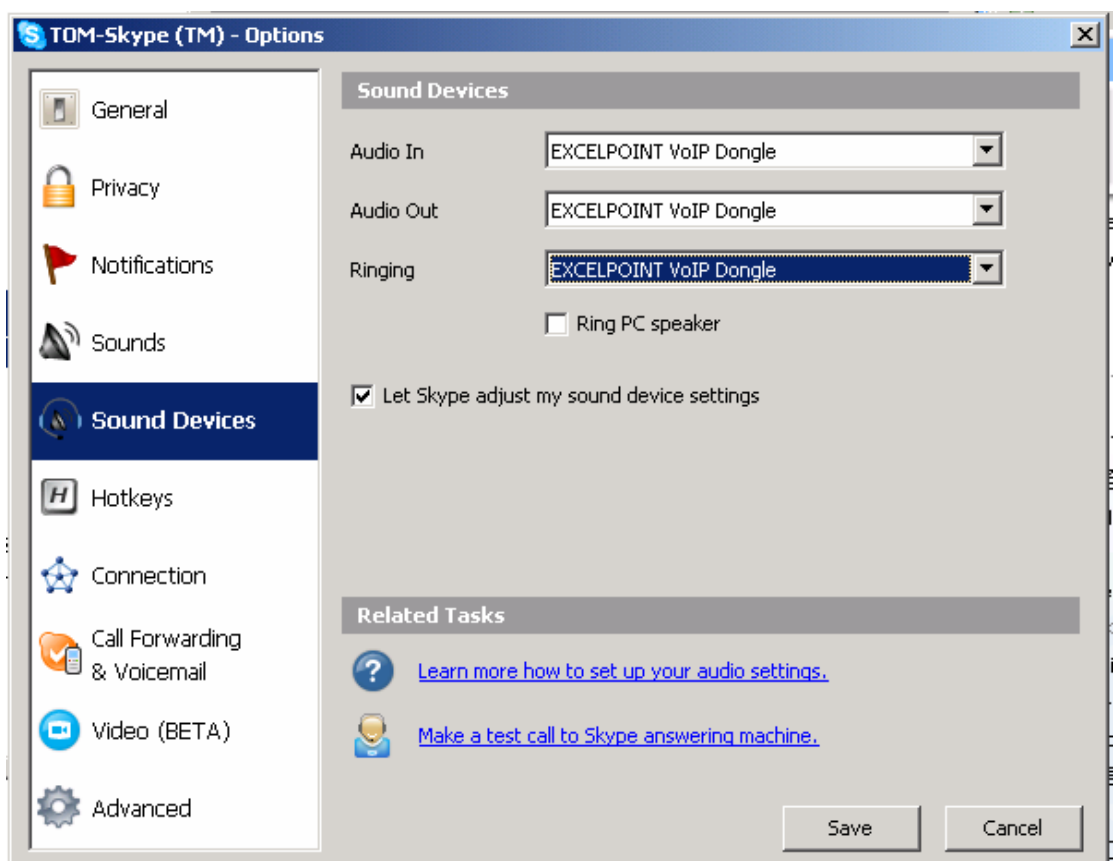
Open Skype ->Tools ->Options....



Open ' Hotkeys' in the option, and set the status of ' Answer call' and 'Reject/Hang up call' to 'Enable'. And then save the setting.



Open 'Sound Devices' in the 'option', set the states of the 'Audio In' , 'Audio Out' and 'Ringing' to 'EXCELPOINT VOIP Dongle'. And then save the setting.



Federal Communications Commission (FCC) Statement

15.21

You are cautioned that changes or modifications not expressly approved by the part responsible for compliance could void the user's authority to operate the equipment.

15.105(b)

This equipment has been tested and found to comply with the limits for a Class B digital device, pursuant to part 15 of the FCC rules. These limits are designed to provide reasonable protection against harmful interference in a residential installation. This equipment generates, uses and can radiate radio frequency energy and, if not installed and used in accordance with the instructions, may cause harmful interference to radio communications. However, there is no guarantee that interference will not occur in a particular installation. If this equipment does cause harmful interference to radio or television reception, which can be determined by turning the equipment off and on, the user is encouraged to try to correct the interference by one or more of the following measures:

- Reorient or relocate the receiving antenna.
- Increase the separation between the equipment and receiver.
- Connect the equipment into an outlet on a circuit different from that to which the receiver is connected.
- Consult the dealer or an experienced radio/TV technician for help.

Operation is subject to the following two conditions:

- 1) this device may not cause interference and
- 2) this device must accept any interference, including interference that may cause undesired operation of the device.

FCC RF Radiation Exposure Statement:

This equipment complies with FCC radiation exposure limits set forth for an uncontrolled environment. End users must follow the specific operating instructions for satisfying RF exposure compliance. This transmitter must not be co-located or operating in conjunction with any other antenna or transmitter.