

Nowill

KJDK06 Smart Lock

Installation Guide / Programming Instructions



Thank you for purchasing our products. Please review this manual thoroughly before operating your device.
All pictures in this manual are for illustration purpose only. Actual product may vary due to product upgrade.

Installation Overview

⚠ Read this manual carefully before installing and operating!

- P 3 STEP 1: Prepare the door and check dimensions
- P 4 STEP 2: Install the latch and strike
- P 6 STEP 3: Install exterior assembly
- P 7 STEP 4: Install interior assembly

Programming Instructions

- P 9 At a Glance
- P 10 How to Use
- P 11 Definitions
- P 12 Quick Set Up
- P 14 Factory Default Settings

DDLock Use Guide

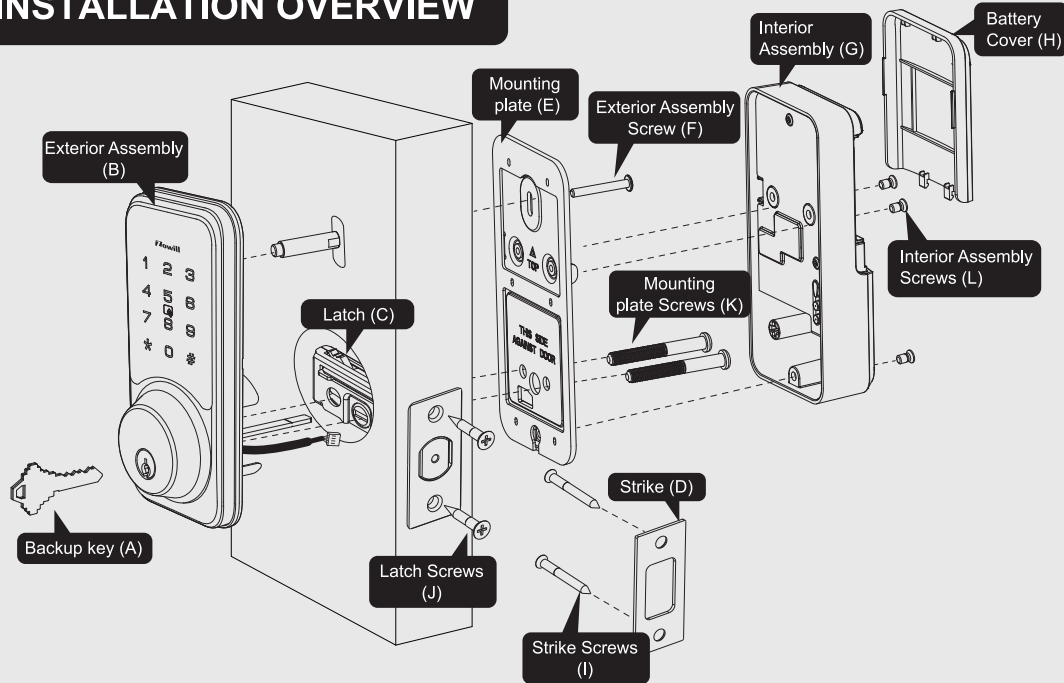
- P 15 HOW TO REGISTER
- P 16 Pairing Your Lock
- P 17 Admin Passcode Management & Lock Page Overview
- P 18 APP Unlock / Lock & Passcode
- P 19 IC Card & eKeys
- P 20 Authorized Admin & Passage Mode and Auto-Lock
- P 21 Lock Settings
- P 22 Troubleshooting
- P 23 FCC Statement
- P 24 Information & Safety Warnings

TOOL REQUIRED:



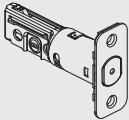


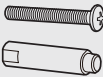
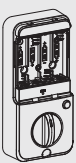







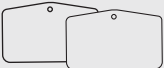


Do not use an electric screwdriver during installation.

INSTALLATION OVERVIEW



Parts List

<p>A Backup Key x2</p> 	<p>B Exterior Assembly x1</p> 	<p>C Latch x1</p> 	<p>D Strike x1</p> 
<p>E Mounting Plate x1</p> 	<p>F Exterior Assembly Screw (Optional)</p> 	<p>G Interior Assembly x1</p>  <p>H Battery Cover x1</p> 	<p>I Strike Screws x2</p>  <p>J Latch Screws x2</p> 
<p>K Mounting plate Screws x2</p> 	<p>L Interior Assembly Screws x3</p>  <p>M Reset Tool x1</p> 	<p>N Drive-In Collar (Optional)</p> 	<p>O IC card</p> 

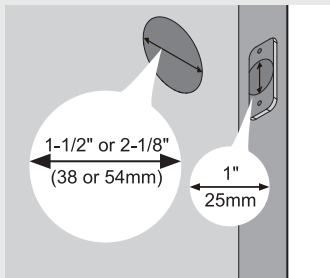
If any parts are lost or damaged, please contact Customer Support.

1 Prepare the door and check dimensions

A

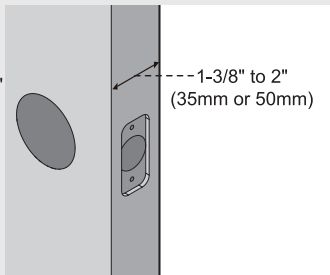
Measure to confirm that the hole in the door is 1-1/2" or 2-1/8" (38mm or 54mm)

Measure to confirm that the hole in the door edge is 1" (25mm).



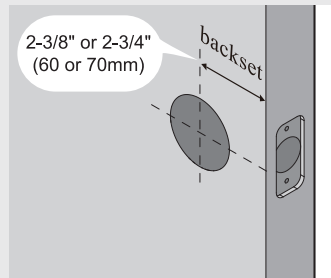
C

Measure to confirm that the door is 1-3/8" to 2" (35 mm or 50mm) thick.



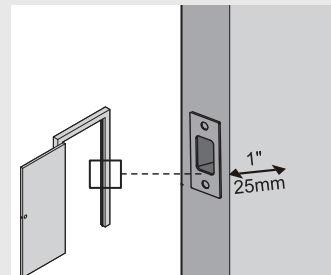
B

Measure to confirm that the backset is either 2-3/8" or 2-3/4" (60 or 70mm)



D

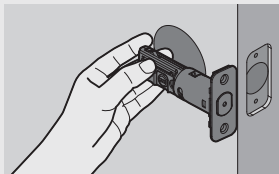
Make sure the hole in the door frame is drilled a minimum of 1" (25mm) deep, to leave enough space for the deadbolt to extend into the door frame when the door is locked.



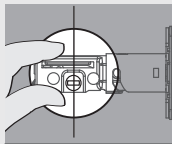
Notes: Make sure the door frame is aligned with the door.
There are no obstructions stuck in the door frame.

2 Install the latch and strike

A Determine backset and adjust the latch

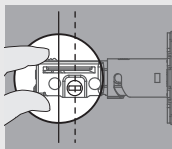


Hold the latch in front of the door hole, with the latch face flush against the door edge. Is the slotted hole centered in the door hole?



YES

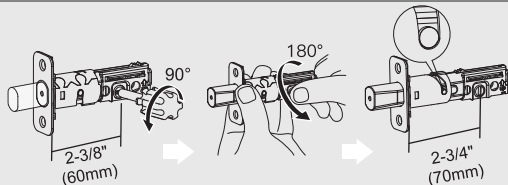
No adjustment is required.
Proceed to next step.



NO

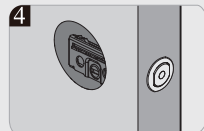
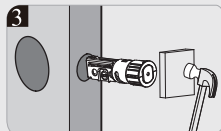
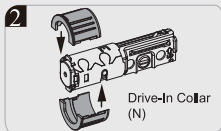
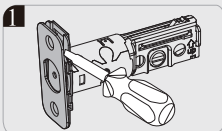
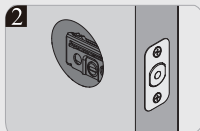
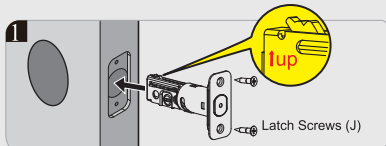
Slotted hole is
NOT centered.

Rotate and pull the
latch as shown to
extend latch.

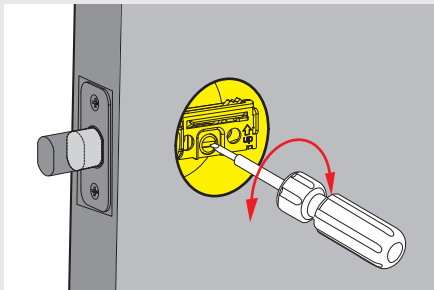


B

Install the latch



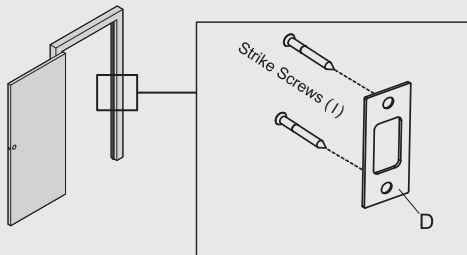
- C** Use a screwdriver to test if deadbolt works smoothly.



- D** Install strike on the door frame.

! IMPORTANT:

Make sure the hole in door frame is drilled a minimum of 1" (25mm) deep.



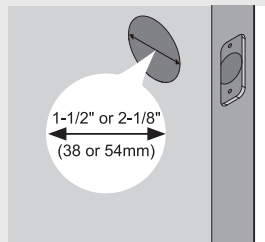
3 Install exterior assembly

! IMPORTANT:

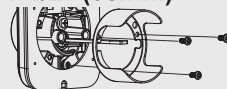
Before installation, make sure the latch is fully retracted (in the unlocked position)



A Measure the diameter of the hole in the door.



1-1/2" (38mm)

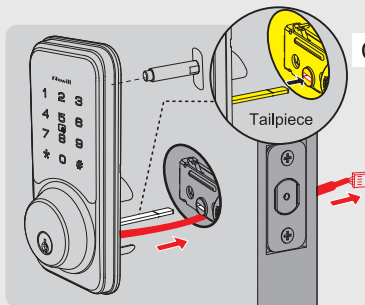


Remove the spacer

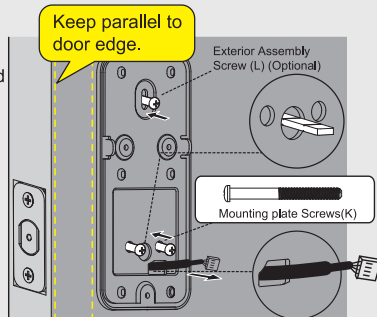
2-1/8" (54mm)

Proceed to next step

B With the latch fully retracted (in the unlocked position), route the cable below the latch, and insert the tailpiece through the slot in the latch.



C Secure the mounting plate with the supplied screws. Do not overtighten screws.



4 Install interior assembly

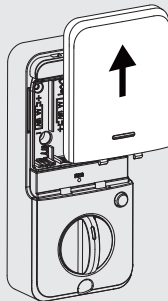
A

Push the battery cover out in the direction as illustrated.



IMPORTANT:

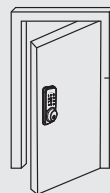
Do not load batteries until lock is completely installed.



B

Determine the door is right handed or left handed.

Notes: If the direction of the slide switch is set incorrectly, it can be reset in DDLock App.



Door hinge
on the right

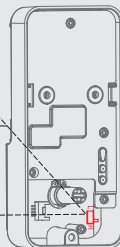
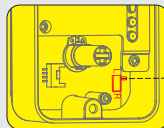
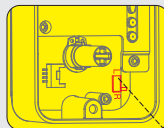
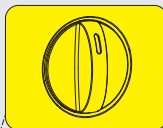
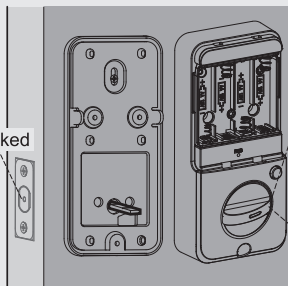


Door hinge
on the left

Right handed door

Left handed door

Unlocked



Right handed door

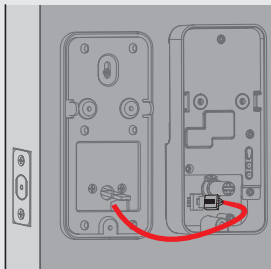
Move the slide switch to "R"
Turn the thumb turn to the Vertical position.

Left handed door

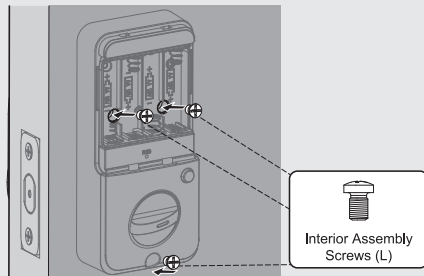
Move the slide switch to "L"
Turn the thumb turn to the Horizontal position.

4 Install interior assembly

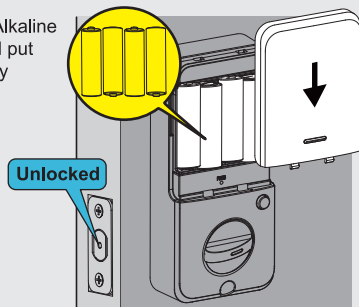
- C** Insert the cable connector to the socket. Push the connector in firmly until it is completely attached.



- D** Attach Interior Assembly to Mounting Plate and tighten 3 Screws.



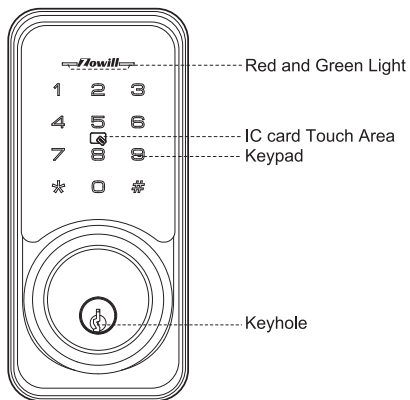
- E** Insert 4 AA Alkaline batteries and put on the battery cover.



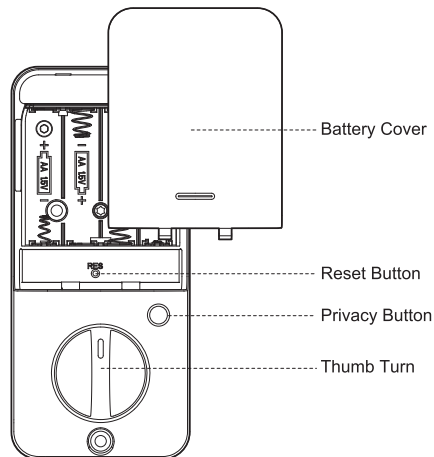
PROGRAMMING INSTRUCTIONS

At a Glance

Exterior Assembly

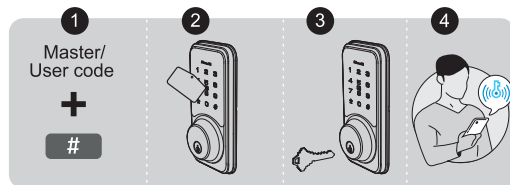


Interior Assembly

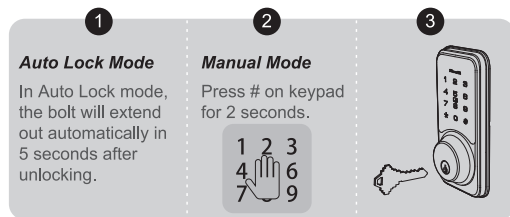


How to Use

UNLOCK the door from outside

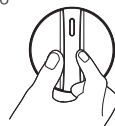


LOCK the door from outside

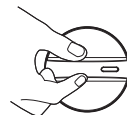


UNLOCK the door from inside

Rotate the thumb turn to Unlock position.



Right hand



Left hand

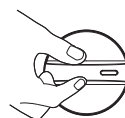
LOCK the door from inside

Auto Lock Mode

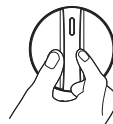
In Auto Lock mode, the device will be locked automatically.

Manual Mode

Rotate the thumb turn to Lock Position.



Right hand



Left hand

• **Master Code**

Required for programming and feature settings. The default master code needs to be changed before programming.

Property owner & manager should keep this information confidential.

• **Auto Lock**

Automatically locks the deadbolt 5 seconds after unlocking. This feature is off by default. You can customize the Auto Lock time delay between 1 and 900 seconds.

• **Key Unlock**

Key Unlock is always available when the batteries are completely dead or valid User Codes are forgotten.

• **Low Battery Indicator**

If you hear 3 beeps along with 3 red light flashing after pressing any key to lock or unlock the door, that's an alert for replacing batteries. Please replace with 4 brand new AA alkaline batteries and do not mix used and new batteries. All settings are stored in the lock while the batteries are removed and replaced.

• **Wrong Entry Limit**

After 5 unsuccessful attempts at entering an invalid PIN code, the unit will shut down for 2 minutes.

• **Silent Mode**

The beep sounds when pressing keypad can be muted. But you will still hear low battery and system alerts.

• **Unlock with Fake code**

User can prevent pin code exposure from strangers by entering random digits before or after pin code. The total password length is within 16 digits.

83618 137192 14710

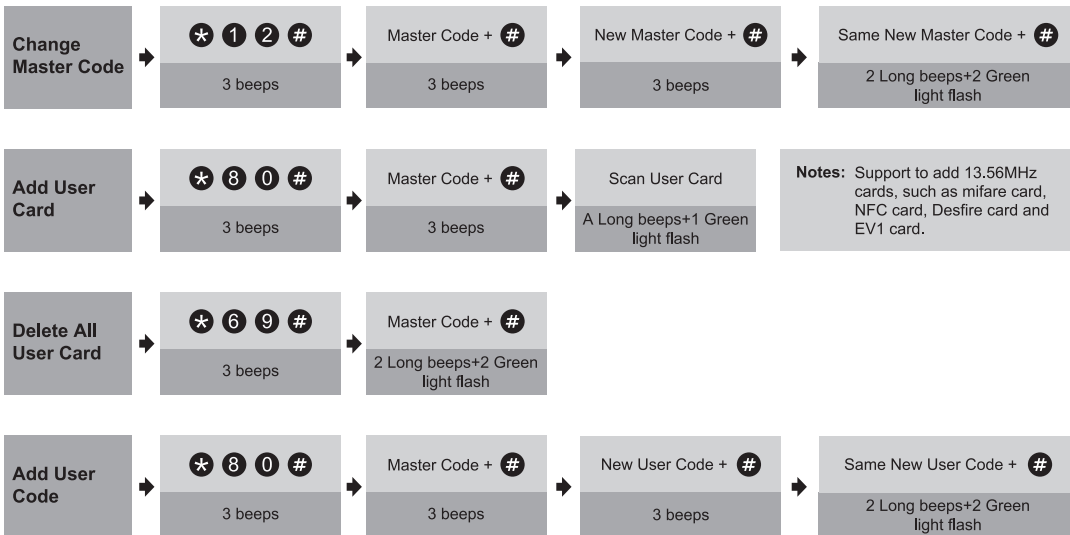
password
----- Random digits -----

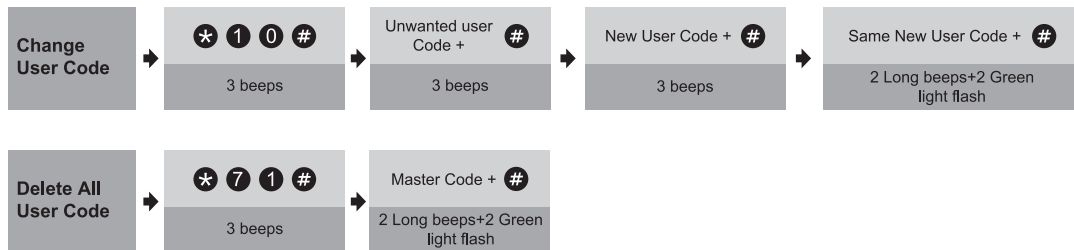
Quick Set Up



IMPORTANT:

The default Master Code is **123456**.
It is required that you change it to a code of your own before programming.





- Notes:**
1. Beeps only sound when the Silent Mode is disabled.
 2. If the indicators flash red light, it means your setting failed.
 3. After adding code/card successfully, you can choose to continue adding or automatically exit the adding program after the screen fades out.

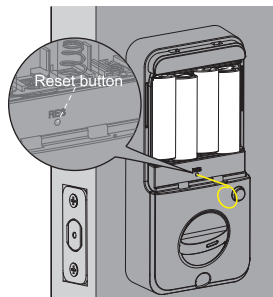
Factory Default Settings

How to Reset?

Press and hold the Reset button on the interior assembly by using the reset tool, stop holding until you hear a short beep and see 1 green light flash.



IMPORTANT: The reset button function must be turned on in the DDLock App before resetting.



Settings	Factory Default
Master Code	123456
Auto Lock	Off
Passage Mode	Off
Reset Button	On
Lock Sound	On
Wrong Code Entry Limit	5 times
Shutdown Time	2 minutes

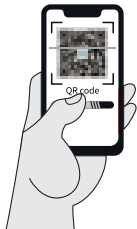
DDLCK USE GUIDE

HOW TO REGISTER

STEP

1

Download "DDLCK" App in Google Play or App Store.



Scan QR code to download
DDLCK App



STEP

1



Register

Tap on register
to get started!

STEP

2



Fill out this and then
tap "Get Code".
You will be sent a
verification code to
verify your account !
Once you receive it,
tap on "Register"

Notes:

The DDLCK app is needed to use
this lock. If this lock was
professionally installed (or installed
by someone other than the
homeowner), make sure this step is
performed by the homeowner.

Pairing Your Lock

STEP

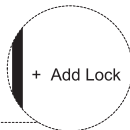
1



Tap on the three horizontal lines.

STEP

2



Tap on "+ Add Lock".

STEP

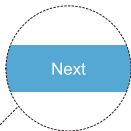
3



Tap on "Door Lock" or "All Locks".

STEP

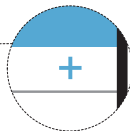
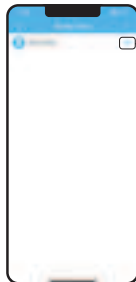
4



Tap on "Next".

STEP

5



Tap on the blue plus sign.

Notes:

You may need to tap on lock keypad.

Admin Passcode Management



After pairing the lock with DDLock, the admin passcode will be changed to a random 7 digit number, you can check the new admin passcode by following the picture guide below. And you can change it to your own administrator password.

Lock Page Overview



Unlock/Lock

Unlock/Lock using phone's bluetooth



Passcode

Generate 6 different types of passcodes



eKey Page

View and modify current eKeys



Records Page

View entry times, attempts and methods



Settings Page

View and modify settings



Authorized Admin Page

Create and edit admins



Cards

Set up your cards here

Notes: Some of these icons may not appear if the Gateway is not connected to the lock.

APP Unlock / Lock



To unlock the lock, tap this icon once.
To lock the lock, press and hold on this icon.

Passcode

STEP

1



3= x
6= x
9= x
Passcodes

To access the passcode menu, tap on "Passcode" icon. This will take you to the passcode page.

STEP

2

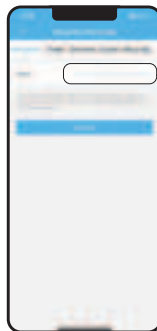


+ Generate Passcode

Tap on "Generate Passcode".

STEP

3



Enter a name for this Passcode

Enter a name for this Passcode.

IC Card

STEP

1



Cards

Tap on "Cards".

STEP

2



+ Add Card

Tap on "Add Card".

STEP

3



Choose the validity period of the lock. Once the lock says "Please swipe your card", place the card against 5 on the keypad. If you hear a long beep, the card can be used to unlock your lock.

eKeys

STEP

1

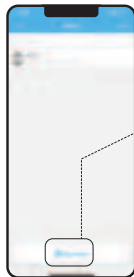


eKeys

eKeys work by sharing app access of your lock with another DDLock account. eKey recipients will be able to use their phone to unlock/lock the lock.

STEP

2



+ Send eKey

Tap on "Send eKey".

STEP

3



Enter recipient's username. It will be the phone number or email address during registration. eKeys do not require wifi or bluetooth to be sent or revoked.

Authorized Admin

Authorized Admins are similar to eKeys; however, an authorized admin can do the following:

STEP

1

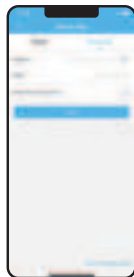


Authorized Admin

1. Unlock/lock via the app.
2. Generate, Edit, Delete passcodes, IC cards.
3. Adjust settings like passage mode, auto-lock timer, & turn on/off the lock sound.

STEP

2

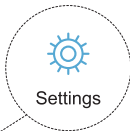
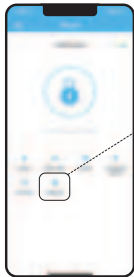


Tap on “Authorized Admin” Set Timed Admin or Permanent Admin.

Passage Mode & Auto-Lock

STEP

1



Settings

Auto-lock will automatically lock the lock when it has been opened after 5 seconds by default. This can be adjusted with Passage Mode and Auto-lock timer. Outlined below is how to adjust these settings related to auto-lock.

STEP

2



Select Passage Mode.

STEP

3



Passage Mode disables auto-lock during a set schedule.

Lock Settings



Here are some settings you should familiarize yourself with.

Under **Basics**, you can view and change information such as Lock Name.

Gateway shows signal strength if Gateway is connected.

With **Remote Unlock** on and a Gateway connected, you can remotely unlock/lock your lock.

Lock Sound adjusts the locks sound level.

Import from another lock allows for the transfer of passcodes and cards from one lock to another.

Delete will remove the lock from your account and clear any settings one the lock. You must be near the lock to do this.

Troubleshooting

Q: Why the lock won't accept any inputs after I entered a code incorrectly for so many times?

A: The lock will shut down for 2 minutes after 5 unsuccessful attempts at entering an invalid code.

You can unlock the lock once in the App or wait 2 minutes to continue.

Q: How do I lock manually from outside?

A: Press and hold # to lock the lock from outside.

Q: The batteries are completely dead before I replace new batteries.

A: When the batteries are completely dead, the physical keys are available to unlock.

Q: How do I share access of the lock to my family members?

A: Go to DDLock App, in eKeys or Authorized Admin, it can share access of the lock to your family.

Q: Why the thumb turn won't turn to lock/unlock?

A: The door direction might be set wrong during the installation, please follow the Installation guide or video to re-install the lock.

Q: When I tap on Lock in App, the deadbolt unlocked and retracted; When I tap on Unlock in App, the deadbolt locked and extended.

A: The door direction has been set wrong. It can be changed in Settings Door opening direction in DDLock App.

FCC Statement

This equipment has been tested and found to comply with the limits for a Class B digital device, pursuant to part 15 of the FCC Rules. These limits are designed to provide reasonable protection against harmful interference in a residential installation. This equipment generates, uses and can radiate radio frequency energy and, if not installed and used in accordance with the instructions, may cause harmful interference to radio communications. However, there is no guarantee that interference will not occur in a particular installation. If this equipment does cause harmful interference to radio or television reception, which can be determined by turning the equipment off and on, the user is encouraged to try to correct the interference by one or more of the following measures:

- Reorient or relocate the receiving antenna.
- Increase the separation between the equipment and receiver.
- Connect the equipment into an outlet on a circuit different from that to which the receiver is connected.
- Consult the dealer or an experienced radio/TV technician for help.

Caution: Any changes or modifications to this device not explicitly approved by manufacturer could void your authority to operate this equipment.

This device complies with part 15 of the FCC Rules. Operation is subject to the following two conditions: (1) This device may not cause harmful interference, and (2) this device must accept any interference received, including interference that may cause undesired operation.

RF Exposure Information

This equipment complies with FCC radiation exposure limits set forth for an uncontrolled environment. This equipment should be installed and operated with minimum distance 20cm between the radiator and your body.

ISED Statement

English: This device contains licence-exempt transmitter(s)/receiver(s) that comply with Innovation, Science and Economic Development Canada's licence-exempt RSS(s). Operation is subject to the following two conditions:

- (1) This device may not cause interference.
- (2) This device must accept any interference, including interference that may cause undesired operation of the device.

The digital apparatus complies with Canadian CAN ICES - 3 (B)/NMB - 3(B).

French: Cet appareil contient des émetteurs/récepteurs exempts de licence qui sont conformes aux RSS exemptés de licence d'Innovation, Sciences et Développement économique Canada.

L'exploitation est soumise aux deux conditions suivantes :

- (1) Cet appareil ne doit pas provoquer d'interférences.
- (2) Cet appareil doit accepter toute interférence, y compris les interférences susceptibles de provoquer un fonctionnement indésirable de l'appareil.

l'appareil numérique du ciem conforme canadien peut - 3 (b) / nmb - 3 (b).

This device meets the exemption from the routine evaluation limits in section 2.5 of RSS 102 and compliance with RSS 102 RF exposure, users can obtain Canadian information on RF exposure and compliance.

cet appareil est conforme à l'exemption des limites d'évaluation courante dans la section 2.5 du cnr - 102 et conformité avec rss 102 de l'exposition aux rf, les utilisateurs peuvent obtenir des données canadiennes sur l'exposition aux champs rf et la conformité.

This equipment complies with Canada radiation exposure limits set forth for an uncontrolled environment.

Cet équipement est conforme aux limites d'exposition aux rayonnements du Canada établies pour un environnement non contrôlé.

This equipment should be installed and operated with minimum distance 20cm between the radiator & your body.

Cet équipement doit être installé et utilisé à une distance minimale de 20 cm entre le radiateur et votre corps.

Information & Safety Warnings

- Protect your User Codes and Master Code.
 - Restrict access to your lock's interior assembly and routinely check your settings to ensure they have not been altered without your knowledge.
 - Do not use an electric screwdriver during installation.
 - This manufacturer advises that no lock can provide complete security by itself.
 - This lock may be defeated by forcible or technical means, or evaded by entry elsewhere on the property.
 - No lock can substitute for caution, awareness of your environment, and common sense.
- Care should be taken to ensure a long-lasting finish. When cleaning is required use a soft, damp cloth. Using lacquer thinner, caustic soaps, abrasive cleaners or polishes could damage the coating and result in tarnishing.
 - The lock is water resistant. It can withstand water splashes; however, do not let water and liquids get into the lock.
 - Avoid exposure to direct sunlight. Long-term exposure to direct sunlight may damage the lock.



The Video of Installation
and Programming Guide



Website: www.zowill.com
Service: support@zowill.com

物料名称:		成品尺寸:	166x105mm
时 间:		材 质:	105g双铜纸
设 计:		工 艺:	四色双面印刷; 骑马钉
料 号:		备 注:	