

## Internal Photographs

- Open the Front Panel -



- TX Module (Bluetooth module) Location -



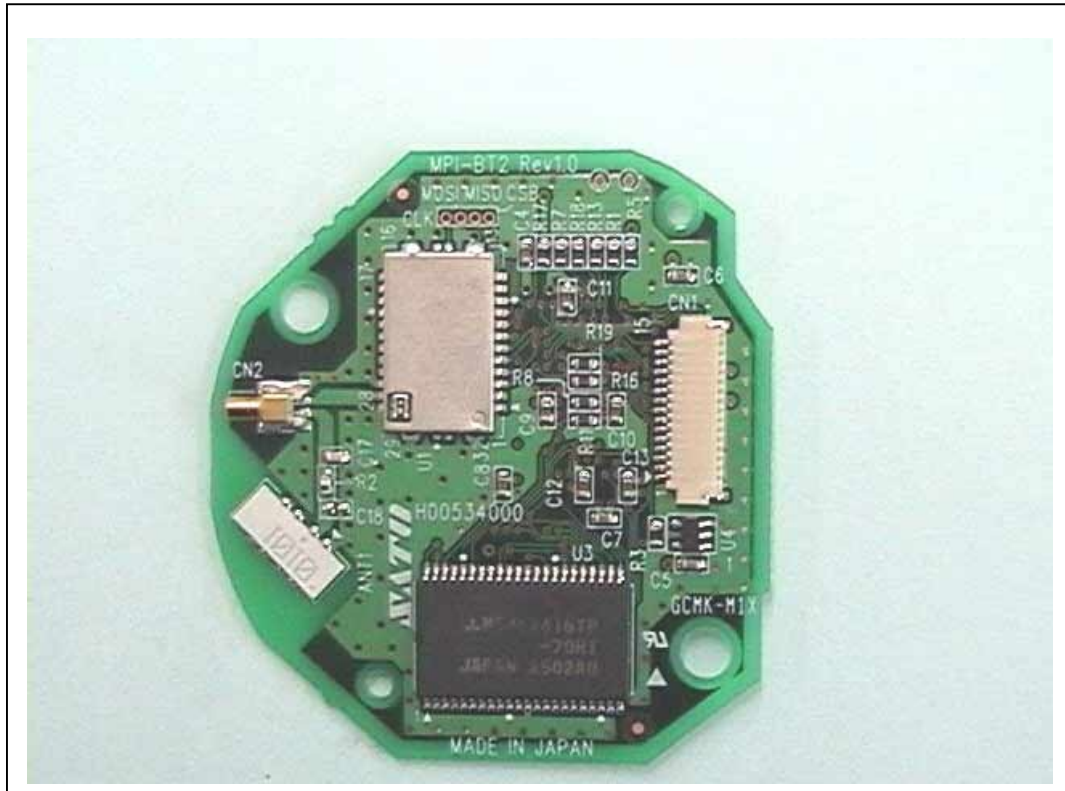
- Circuit Board (A side) -



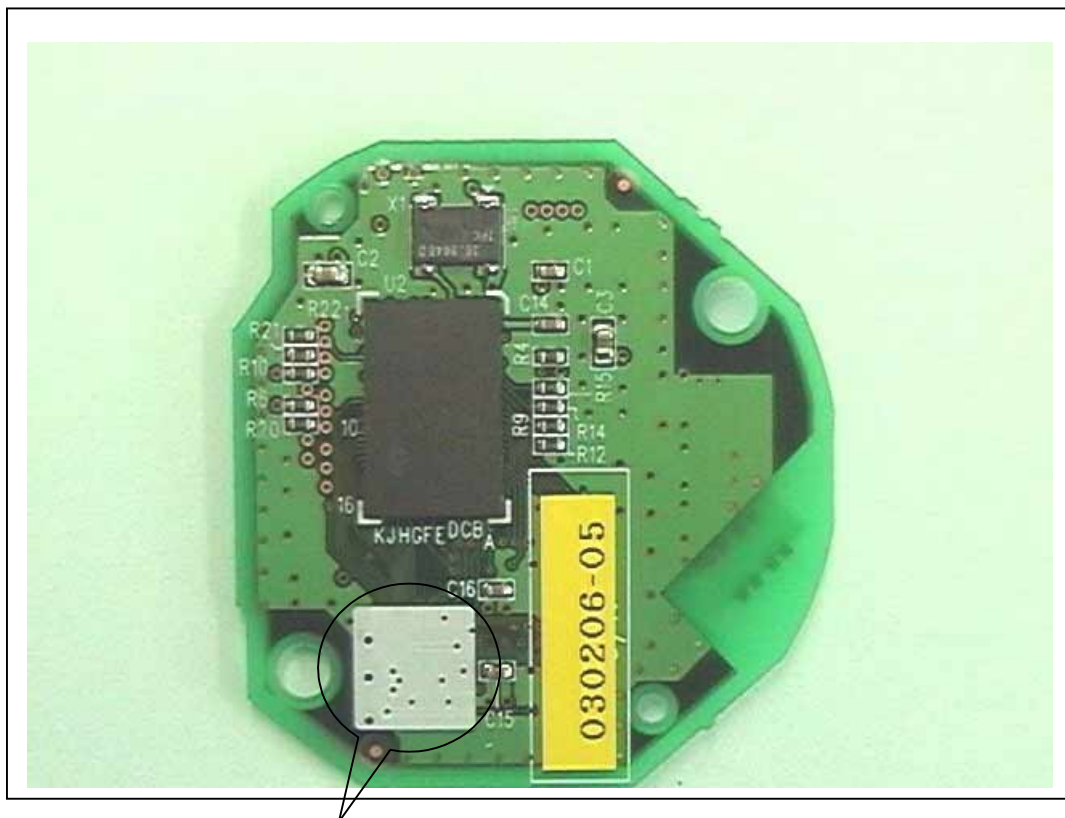
- Circuit Board (B side) -



- TX Circuit Board (A side) -



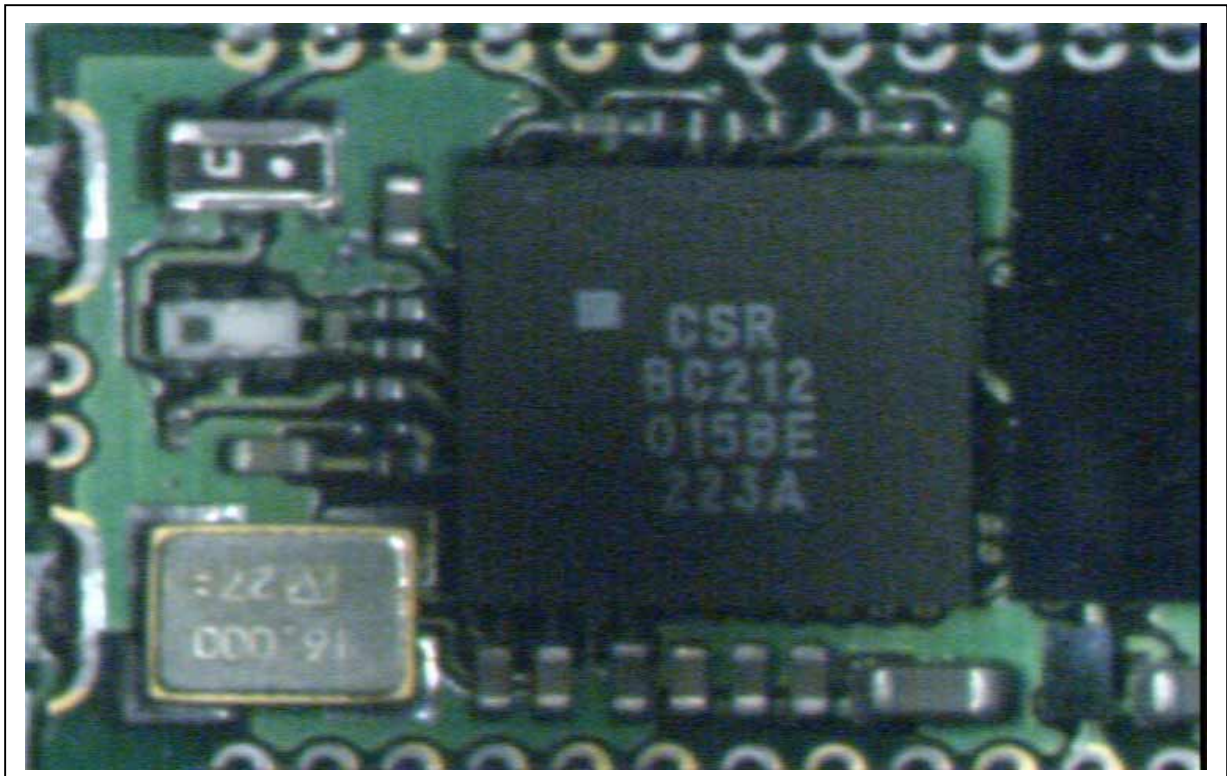
- TX Circuit Board (B side) -



Remove the shielded cover on next page-



- Remove the shielded cover (1) -



- Remove the shielded cover (2) -

