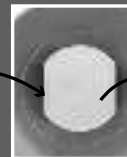




WARNING:

Look inside the bottom canister for the mounting bracket.

The mounting bracket is inside the foam in the bottom canister.



Central Vacuum System User manual



For the product codes ending -25H

ex: OVO-630ST-25H

OVO-750ST-25H

For the product codes ending -35H

ex: OVO-600ST-35H

OVO-630ST-35H



© 174402 US

UM-EN-24-04-2024-OVO

For the installation video,
Scan the QR code or visit YouTube video
at: <https://youtu.be/hJ9E5-jdjr8>



Index

- 1. Important safety instructions. 3
- 2 General guidelines and references. 4
 - Grounding requirements
 - General guidelines to be respected at all times
- 3 Hybrid Filtration / Models 5
- 4. Installation 6-7
- 5. System operation instruction. 8
- 6. System maintenance 8
 - Filtration system
- 7 . Trouble shooting..... 9-10
 - General
- 8 Low-voltage system. 11
 - LED Interpretation chart



1. Important Safety Instructions

CAREFULLY READ ALL OF THESE INSTRUCTIONS BEFORE USING THIS CENTRAL VACUUM SYSTEM.

When using an electrical appliance, it is necessary to observe certain basic precautions.



WARNING - TO REDUCE THE RISK OF FIRE, ELECTRIC SHOCK, OR INJURY:

- Unplug the power cord from the electrical outlet before performing any maintenance on the power unit.
- Do not install outdoors, protect against weathering, and do not use on wet surfaces.
- This appliance must not be used as a toy. Exercise extreme caution when children are using the system or when it is in use in the vicinity of a child or infant.
- This system must be used in accordance with the instructions provided in this manual. Use only the accessories recommended by the manufacturer.
- Do not use the system if the power cord or electrical outlet is damaged, if the system does not function normally, if it has been dropped, was left outdoors for an extended period, or if it has been immersed in liquid. In these cases, the power unit must be sent to an authorized service center.
- Do not use the power cord to pull or lift the power unit, or use it as a handle. Be careful not to pinch it in a door or let it hang on a sharp corner or edge.
- Check the openings for any foreign objects that may be lodged in the pipe. If found, remove the obstructing objects to ensure maximum airflow.
- Keep the power cord away from contact with any hot objects or surfaces.
- **Do not unplug the power cord by pulling on it. Always remove it directly from the electrical outlet.**
- **Do not use the system or its accessories with wet hands.**
- Keep hair, clothing, fingers, body parts, or other objects away from any openings or moving parts of the system.
- Deactivate all functions of the system before unplugging the power cord from the electrical socket. Take necessary precautions when using the system on stairs.
- **Do not use the system to pick up flammable liquids or fuels (e.g., gasoline) or use it in areas where such liquids may be present.**
- Only plug the power cord into a properly grounded electrical socket. For more information on this subject, please refer to the "Grounding Specifications" on page 4 (section 2).
- **The exhaust of the power unit must not be directed against a wall, ceiling, or inside a closed space within a building or structure. It is recommended that the exhaust be vented outdoors.**
- Do not pick up hot ashes, glowing embers, smoking materials, incandescent materials, cigarette butts, matches, etc...
- Do not place anything on top of the power unit or near it, as this could cause the unit to overheat.
- DO NOT use the power unit if the pipe network is clogged. This will cause the unit to overheat.

KEEP THESE INSTRUCTIONS IN A SAFE PLACE
THIS POWER UNIT IS FOR DOMESTIC USE ONLY

2. GENERAL DIRECTIVES AND REFERENCES

ELECTRICAL GROUNDING SPECIFICATIONS

The system's power unit must be grounded. In the event of a malfunction or power unit failure, grounding provides the path of least resistance for any electrical current, thereby minimizing the risk of electric shock. The power unit's power cord is 72 inches or 1.83 meters long and is equipped with a grounding wire and pin. The power unit's power cord must always be directly plugged into a suitable electrical outlet that is properly installed and grounded in accordance with current local electrical standards.

Do not use extension cords to connect the power unit to the electrical outlet.

WARNING

Improper connection of the power unit grounding wire can result in the risk of electric shock. If you are unsure about proper grounding, contact a professional electrician. Do not modify the power cord supplied with this power unit. If the power cord connector does not fit your electrical outlet, have the proper electrical outlet installed by a professional electrician. This power unit is designed to be used on a nominal electrical circuit of 15 A, 110-120 VAC at 60 Hz. The power cord is equipped with a grounding pin. Ensure that the power cord is plugged into an electrical outlet with the same specifications. This appliance should not be used with an adapter. While it is recommended to install this unit on its independent circuit and breaker, it is not necessary to do so.

IMPORTANT

The manufacturer shall not be held responsible for damages caused by the inappropriate use of this system. The warranty does not cover damages caused by improper use of this system or problems resulting from an installation that does not meet the specifications or any structural or functional alterations made to the power unit. An inappropriate or non-recommended installation of the system or the power unit, made without adhering to the directives outlined in this document, will be considered misuse. The limited warranty and user manual outline all conditions and restrictions. To optimize the performance and lifespan of your OVO power unit, it is essential to perform regular maintenance and cleaning of the filter according to the guidelines listed in this user manual.

General guidelines must be adhered to at all times:

1. The power unit must be installed in a well-ventilated area, protected from weather conditions, and kept away from all sources of heat.
2. This central vacuum system is designed for dry surfaces only and must not be used on wet surfaces or to pick up liquids. It should not be used to clean wet carpets or any wet ground.
3. The filter cage must always be covered by the permanent filter during the system's operation.
4. The motor housing must never be obstructed to prevent damage or overheating.
5. Do not use this system to pick up mud or similar substances, or to vacuum baking flour, talcum powder, cement, or gypsum dust, as it will obstruct and clog the filter media. The filter must be cleaned several times during and after such pick-ups to prevent motor overheating and potential damage.
6. Do not attempt to shorten or modify the power cord in any way.
7. For safety purposes, unplug the power cord before performing maintenance or servicing.
8. To maintain the validity of the warranty, any repairs or servicing on the power unit must be performed only by an authorized service center.
9. The power unit should be positioned so that the power cord and electrical outlet are always easily accessible.
10. Regarding the use of an electrified valve (110 VAC) (intended for the connection of a current-carrying hose and electrically motorized brush):
 - Only connect a current-carrying hose to this wall valve.
 - Do not install a current-carrying valve outdoors.
 - Do not use a damaged hose; bring it to an authorized service center for repair.

FCC Warning

This device complies with part 15 of the FCC Rules. Operation is subject to the following two conditions: (1) This device may not cause harmful interference, and (2) this device must accept any interference received, including interference that may cause undesired operation.

Note: This equipment has been tested and found to comply with the limits for a Class B digital device, pursuant to part 15 of the FCC

Rules. These limits are designed to provide reasonable protection against harmful interference in a residential installation. This

equipment generates, uses and can radiate radio frequency energy and, if not installed and used in accordance with the instructions,

may cause harmful interference to radio communications. However, there is no guarantee that interference will not occur in a particular

installation. If this equipment does cause harmful interference to radio or television reception, which can be determined by turning

the equipment off and on, the user is encouraged to try to correct the interference by one or more of the following measures:

- Reorient or relocate the receiving antenna.

- Increase the separation between the equipment and receiver.

- Connect the equipment into an outlet on a circuit different from that to which the receiver is connected.

- Consult the dealer or an experienced radio/TV technician for help.

Note: The Grantee is not responsible for any changes or modifications not expressly approved by the party responsible for

compliance. such modifications could void the user's authority to operate the equipment.

The device has been evaluated to meet general RF exposure requirement.

To maintain compliance with FCC's RF exposure guidelines, the distance must be at least 20 cm between the radiator and your body, and fully supported by the operating and installation

IC Warning

This device complies with Industry Canada license-exempt RSS standard(s). Operation is subject to the following two conditions: (1) this device may not cause interference, and (2) this device must accept any interference, including interference that may cause undesired operation of the device.

Le présent appareil est conforme aux CNR d'Industrie Canada applicables aux appareils radio exempts de licence.

L'exploitation est autorisée aux deux conditions suivantes:

- (1) l'appareil ne doit pas produire de brouillage, et

- (2) l'utilisateur de l'appareil doit accepter tout brouillage radioélectrique subi, même si le brouillage est susceptible d'en compromettre le fonctionnement.

The device has been evaluated to meet general RF exposure requirement. To maintain compliance with RSS-102 — Radio Frequency (RF) Exposure guidelines, this equipment should be installed and operated with a minimum distance of 20cm between the radiator and your body.

le dispositif de a été évalué à répondre général rf exposition exigence.pour maintenir la conformité avec les directives d'exposition du RSS-102-Radio Fréquence (RF). ce matériel doit être installé et exploité à une distance minimale de 20 cm entre le radiateur et votre corps.

3.1 MODELS

25 L Canister

For the product codes that end with: -25H



35 L Canister

For the product codes that end with: -35H



3.2 HYBRID SYSTEMS

Can be used with or without disposable bags



- The permanent filter must be **IN PLACE AT ALL TIMES** even when using a filtration bag.
- The permanent filter must be washed every time the canister is emptied to prevent debris from accumulating on the filter and to avoid debris entering the motor compartment.
- The permanent filter must be changed for a new one every 2 years to maintain the warranty on the vacuum. It must be replaced with OVO filter FP-8 for the products whose code end with: -25H or FP-12 (for the products whose code end with: -35H)

USA

CANADA

To purchase bags and filters, scan the QR code or visit our website:

USA: myovo.net/product-category/bags-and-filter

CANADA: myovo.ca/product-category/bags-and-filter



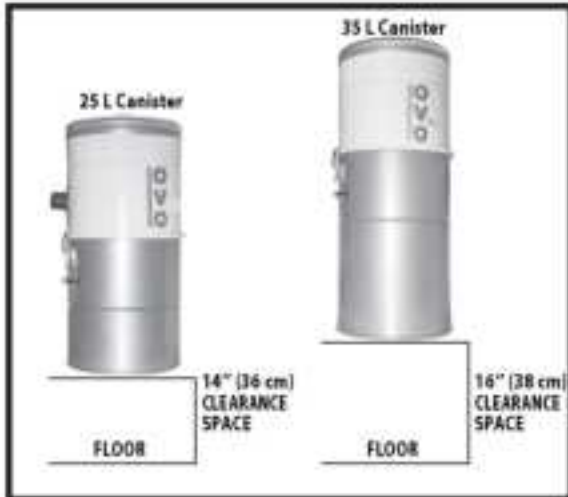
4. INSTALLATION



NOTE

APPLICABLE TO ALL POWER UNITS: The power unit must be installed in a well-ventilated area, protected from the weather. It must be easily accessible and positioned away from any heat source. The power unit must be installed near an appropriate electrical outlet. Ensure that there is at least 6 inches (15 cm) of clearance space all around the unit.

1. Measure the bottom clearance space to be able to remove your bag and your canister easily.



For 25 L Canister

Minimum clearance space 14" (36 cm)

For the product codes that ends with: -25H

For 35 L Canister

Minimum clearance space 16" (38 cm)

For the product codes that ends with: -35H

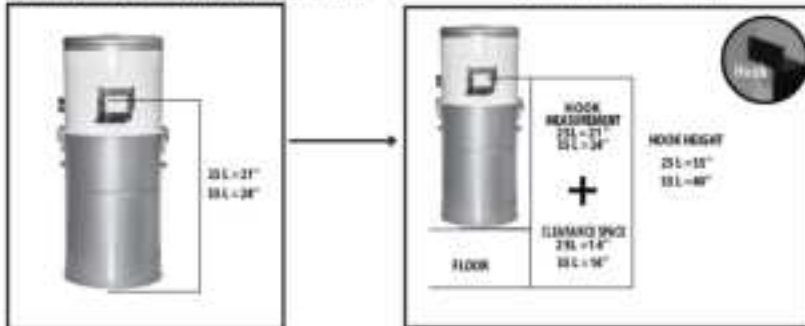
2. Measure where your bracket will be installed.



NOTE: We recommend installing a wooden panel 16 inches (40 cm) high, 0.75 inches (2 cm) thick, and 10 inches (25 cm) wide to strengthen the support.

Take the measurement from the bottom of the vacuum to the point where the hook will be inserted into the vacuum.

Add this measurement to the bottom clearance measurement.



Installation on a gypsum wall (Gyprock)

-Prepare the wall by installing a plywood mounting plate (not provided) that is 16 inches (40 cm) high, 0.75 inches (2 cm) thick, and 10 inches (25 cm) wide to be screwed into at least 2 studs.

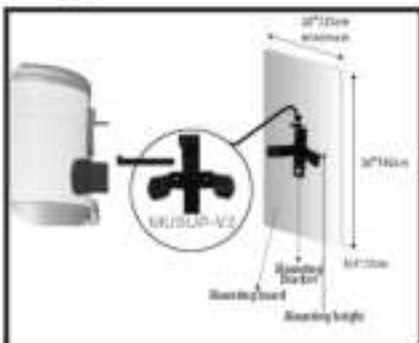
-Drill three (3) holes with a 3/8-inch (10 mm) wood drill bit. Place the provided rubber inserts. Secure the wall bracket with the provided screws.

Installation on a concrete wall:

Drill three (3) holes with a 3/8-inch (10 mm) masonry drill bit. Place the provided rubber inserts. Secure the wall bracket with the provided screws.

3. Hang your unit on the bracket.

Insert the hook into the middle of the bracket on the vacuum.



4. INSTALLATION (Cont.)

4. Connect the top air and debris intake pipe to the PVC piping network

We suggest to use flexible pipes (**SOLD SEPARATELY**) For faster and easier installation



NOTE: Our flexible pipes are 12" long and comes in a set of 2 with connection pieces. You can connect two (2) flexible pipes together by using the PVC pipe pieces and the provided metal ring. (NEVER USE GLUE) - **OUR FLEXIBLE PIPE KIT IS SOLD SEPARATELY**

Step-1



- Connect one side of the flex pipes to the piping network. Secure it with the ring. DO NOT GLUE.

Step-2



- On the top air intake of the vacuum (metallic tube), Insert a coupling. DO NOT GLUE

Step-3



- Insert a 2" (5 cm) PVC pipe piece in the top air intake coupling DO NOT GLUE

Step-4



- Connect the other end of your flexible pipe to the PVC pipe piece and secure it with provide metal ring (NEVER USE GLUE)

If using Hard pipe

1st, you must determine the trajectory of your piping
Then you must glue pipes and elbows together all the way to the top air intake
This method requires: PVC solvent cement glue, 2" PVC pipes, sweep elbows, couplings and a pipe cutter



Scan to purchase flexible pipes or piping installation kit on our web site

Canada web site



US web site



5. Connect your low-voltage wire

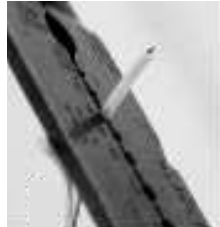
IF YOU HAVE MULTIPLE INCOMING WIRES, FOLLOW STEP 5.1 TO 5.5

IF YOU HAVE ONLY 1 INCOMING WIRE, FOLLOW STEP 5.1, 5.4 AND 5.5



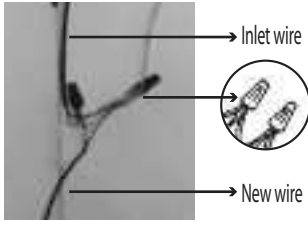
Note: Never connect more than 1 wire into the Low-Voltage socket

Step 5.1



- First, take a new low-voltage wire and strip the conductors for about 3/8" (10 mm).

Step 5.2



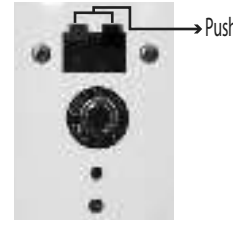
- Using wire nuts (marrettes), connect one side of the new wire to all the other existing ones, by connecting all the positive sides together and all the negative sides together.

Step 5.3



- Than, secure each side with electrical tape

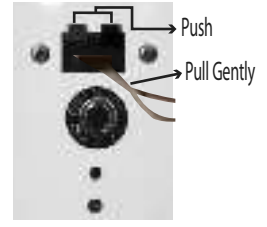
Step 5.4



- Connect the other side of your new wire (conductors) into the low-voltage socket on the vacuum while simultaneously pushing on their respective button.
- Give a light pull to the wire to make certain that it is well secured in the terminal.

Live (negative side) in the black terminal and neutral (positive side) in the red terminal

Step 5.5

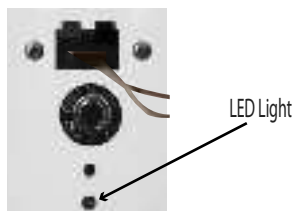


- To remove the conductors out of the terminals, lightly push the button as you are simultaneously gently pulling the wires out.

6. Plug-in your vacuum



Plug your vacuum into a regular electrical outlet.



- The LED light will first flash green, then display a steady green

Your vacuum is ready to be used.



5. SYSTEM OPERATING INSTRUCTIONS

Your new system is now prepared for use. Here are a few simple guidelines to follow when using your OVO Central Vacuum System: Insert the wall end of the hose into any of the vacuum wall inlet valves installed throughout your home. When you're ready to begin, simply press the ON-OFF switch on the hose handle!

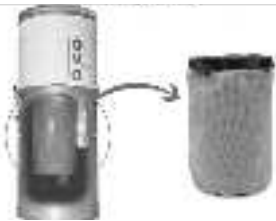
NOTE: In reference to the low-voltage system, all vacuum inlet valves are equipped with two (2) spring-loaded metal pins. When the hose wall-end cuff's two (2) metal components come into contact with the two (2) pins inside the inlet, the system becomes energized. You can then activate or deactivate it using the hose handle switch (if this option was chosen). The low-voltage cable is connected in parallel from each inlet valve. It runs throughout the piping network and supplies power to the switch for remotely starting or stopping the power unit, ensuring safety. A standard flexible hose, lacking an interrupter, will start the power unit immediately upon insertion into the valve opening.

6. FILTRATION SYSTEM MAINTENANCE

To ensure optimal air quality in your home, the power unit includes a high-efficiency HYBRID filtration system. This system uses a permanent polypropylene washable and reusable filter, along with the option to use either a 12.5L or 22.5L disposable filter bag.

 **NOTE: The permanent filter MUST BE IN PLACE AT ALL TIMES; the filter's securing strap must be tight and adjusted to ensure there are no dust or others that goes into the motor propeller.**

PERMANENT FILTER



The permanent filter should be washed each time the canister is emptied to prevent debris accumulation and to avoid any debris from entering the motor compartment.

To maintain the vacuum's warranty, the permanent filter must be replaced with a new one every two (2) years. The new filter must be either OVO filter: FP-8 (For the product codes that end with: -25H) OR FP-12 (For the product codes that end with: -35H)

FILTRATION BAGS

 **IMPORTANT**
The permanent filter MUST BE IN PLACE AT ALL TIMES; the filter's securing strap must be tight and adjusted to ensure there are no dust or others that goes into the motor propeller.


This OVO hybrid power unit may be used with OR without a disposable bag. Bags are sold in 3-pack:FD-12.5L-3OVO: (for product codes that end with: -25H) OR FD-22.5L (for product codes that end with: -35H)

The disposable bag must be installed as described here:

- 1- Remove the debris canister
- 2- Remove the dirt-filled bag
- 3- Install the new bag by twisting it into place
- 4- Verify and clean (If necessary) the permanent filter.
- 5- Replace the debris canister and secure the latches



NOTE: When replacing the disposable bag, ensure that the rubber diaphragm is correctly installed onto the intake PVC pipe. Verify that the bag is not cut or damaged, and ensure that the canister is securely in place before restarting the power unit. It's recommended to replace the disposable bag or empty the debris canister, as well as clean the permanent filter, 3 or 4 times per year. If the system is used more frequently than usual, repeat the above procedure more often.

 **IMPORTANT**
NEVER use this system to pick up liquids, mud, or combustible materials. Vacuuming baking flour, talcum powder, cement, or gypsum dust will result in obstructing and potentially clogging the filter media. You'll need to clean the filter several times during and after such pick-ups. Otherwise, the power unit's performance will be affected, and the motor may overheat and become damaged.

6. TROUBLE SHOOTING

GENERAL

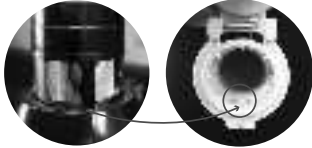

The following may cause failure of the power unit:



- Inadequate electrical power (Voltage or Amperage). Verify that the electrical power supplied complies with the power unit's requirement. or;
- Abnormal performances of the electronic control module or the motor

Before calling a service technician, in case of a malfunction, please review the following situations by running the following simple diagnostics:

SITUATION	VERIFICATION
THE POWER UNIT DOES NOT OPERATE	Verify that there is power in the electrical outlet.
	Verify the breaker or the fuse in the electrical panel.
	Verify that the power cord is adequately plugged in the electrical outlet.
	Verify that the mini-breaker button on the side of the unit is pushed-in.
	Short-circuit the low-voltage connections on the side of the power unit. If the power unit starts, the problem is somewhere else in the inlet low-voltage wiring network or on the current carrying hose.
	Verify that all low-voltage connections are adequate at every inlet valve location. Open every inlet valve, one at a time, and make contact between the two (2) small pins with a metal object. If all the inlet valves are functioning properly, take a look at the low-voltage circuit or switch on the hose.
	If the power unit still does not work after the above diagnostic, bring the unit to the nearest authorized service center.

SITUATION	VERIFICATION
LOW OR NO SUCTION OR AIR FLOW AT ALL	Verify the cleaning tool or the hose for possible obstruction. If the hose is obstructed, try to "massage" the clog out. Try to "reverse" the hose by inserting the cleaning end of the hose in the wall inlet valve and making contact with the two (2) small metal contact pins, hold your hand around the opening for air tightness.
	Verify if the disposable bag is full, if so replace disposable bag and/or that the filter may be clogged, if so clean the permanent filter.
	Verify if the debris canister is adequately placed on the unit with no air leaks.
	Verify that all other inlet valves are shut and that there is no air leaks.
	If one of the vacuum inlet valves has noticeably less power than the others, it is a sign of a clog at this particular inlet valve. Write a different number on a few paper tissues and pick one up in every inlet valve in the home; see in the debris canister which one is missing and find which inlet valve is obstructed
	If none of the inlet valves function properly and that the power unit is running; unhook the flexible pipe on the top of the power unit from the debris intake line. If you have plenty of suction there, it is a sign that the clog is between the last inlet valve and the power unit.
	If the power unit still does not work after the above diagnostic, bring the unit to the nearest authorized service center.

SITUATION	VERIFICATION
VACUUM WON'T START OR STOP	Hose on/off switch When setting the hose switch to "OFF", you must wait 3 seconds before the vacuum powers off. If you pressed the "ON/OFF" switch quickly many time; The vacuum will seem to always stay on. Set the switch to "OFF" and wait 3 seconds, the unit powers off.
	Hose not properly plugged in Make sure to properly plug the hose in the inlet. (See the picture to see proper plug-in method)
	 <p>Make sure the black part is well aligned in the middle of the 2 small pins</p>
	Option 3: The pin's spring could be broken  <p>If the pins, once pushed, do not come up; the spring is probably broken and could cause the vacuum not to start or stop. In which case the spring must be fixed.</p>
	Option 4: If all of the above works, please proceed with a bypass. See the step below. If the vacuum starts, seek a technician, as there may be a problem with the cables. If the unit does not start, please contact us at 1-800-776-7891 or via email at service@myovo.net , and we will be happy to resolve this situation promptly.

SITUATION	VERIFICATION
HOW TO PERFORM A BYPASS TO TEST THE VACUUM	Step 1: Use wire or a paper clip
	
	Step 2: Insert one side of the wire or paper clip into the black terminal on the inlet and the other into the red terminal. The unit should then start.
	
	Step 3: Remove the wire and wait 3 seconds. The unit should stop.

FAQ and Troubleshooting Guide available on our website at:

USA: myovo.net/trouble_shooting
Canada: myovo.ca/trouble_shooting

+1-800-776-7891

8. LOW-VOLTAGE SYSTEM TECHNOLOGY



LED Light

LED status interpretation guide

This **OVO** Central Vacuum Power Unit is provided with an LED status indicator to keep you informed on the different states and functions during its operation. Reading the following table will allow you to identify the status of your appliance by the different behaviors of the LED.

Status	Color	Legend
	OFF	The power unit is not connected to an electrical outlet.
	GREEN	The power unit has just been connected to the power source The light will blink fast for few second and turn into a solid state.
	GREEN	(Solid green light) The system is operational
	GREEN	Stop power unit / change bag or empty canister / wash the filter Press reset button . The light will stop blinking and return to solid green
	ORANGE	Service Due
	ORANGE	Stop power unit / change bag or empty canister / wash the filter Press reset button. The light will return to solid orange
	RED	Stop using. Service Overdue
<div> <div> Solid </div> <div> Blink slow </div> <div> Blink fast </div> </div> <div> <div>Operational/ Requirements</div> <div>Warning Action Required</div> <div>Booting System</div> </div>		

SAFETY NOTES

- Always unplug the central vacuum power unit to prevent the risk of electrocution.
- Ensure that the work area is safe and clear before installing your new OVO central vacuum power unit.
- Wear the necessary protective clothing and equipment before starting any work (such as goggles and gloves).
- Use the correct and properly functioning tools, including: [complete the list as needed]
 - Hammer
 - Phillips head screwdriver (cruciform)
 - Measuring tape
 - Level
 - Drill; with wood or concrete bit of 3/8" (10mm)
 - Pliers
 - Wire stripper



USA: www.myovo.net
Canada: www.myovo.ca
+1-800-776-7891

TO PURCHASE NEW BAGS AND FILTERS

USA: myovo.net/product-category/bags-and-filter
CANADA: myovo.ca/product-category/bags-and-filter

ON CENTRAL VACUUM



The warranty below covers only parts and includes a 1-year labor warranty. The use of electrical power other than prescribed on the unit and/or any repairs made by other than authorized service personnel will render this warranty null and void. The warranty will also be null and void if the system and/or its accessories have been used on wet surfaces. This warranty is for residential applications ONLY; it does not cover commercial or industrial usage of the product. The manufacturer is not responsible for any transportation/freight. Proof of purchase is mandatory, along with the invoice for the installation by a qualified electrician.

The Central Vacuum Power Unit Body, Motor & Module – Ten (10) years:

OVO will repair or replace any defective parts of the central vacuum motor, electronic module, body, housing, and dust bin for Ten (10) years, as long as you own it, and if used in normal conditions and properly maintained, as stated in the power unit instruction manual.

Certain conditions apply: The permanent washable filter should be replaced every 2 (Two) years, and the disposable bags must be changed a minimum of twice a year. This warranty will cover the replacement of a new unit per purchase. Afterward, the warranty will cover the required repairs.

ON ATTACHMENT KITS



Cleaning tools, carpet brushes, and flexible hoses: Two (2) years warranty:

The cleaning tools, carpet brushes, and flexible hoses, when used adequately and in normal conditions, are warranted for two (2) years from the original date of purchase against manufacturing defects.

Certain conditions apply: The warranty does not cover the normal wear of bristles, turbines, lamps, belts, carbon brushes, and roller bearings from the turbo brush and electrical carpet beater.

TO REGISTER YOUR WARRANTY:

USA: myovo.net/register
Canada: myovo.ca/register

2044 Autoroute 440 Ouest, Laval, QC, H7S 2M9