

Fig. 1: Internal view_1 of active speaker

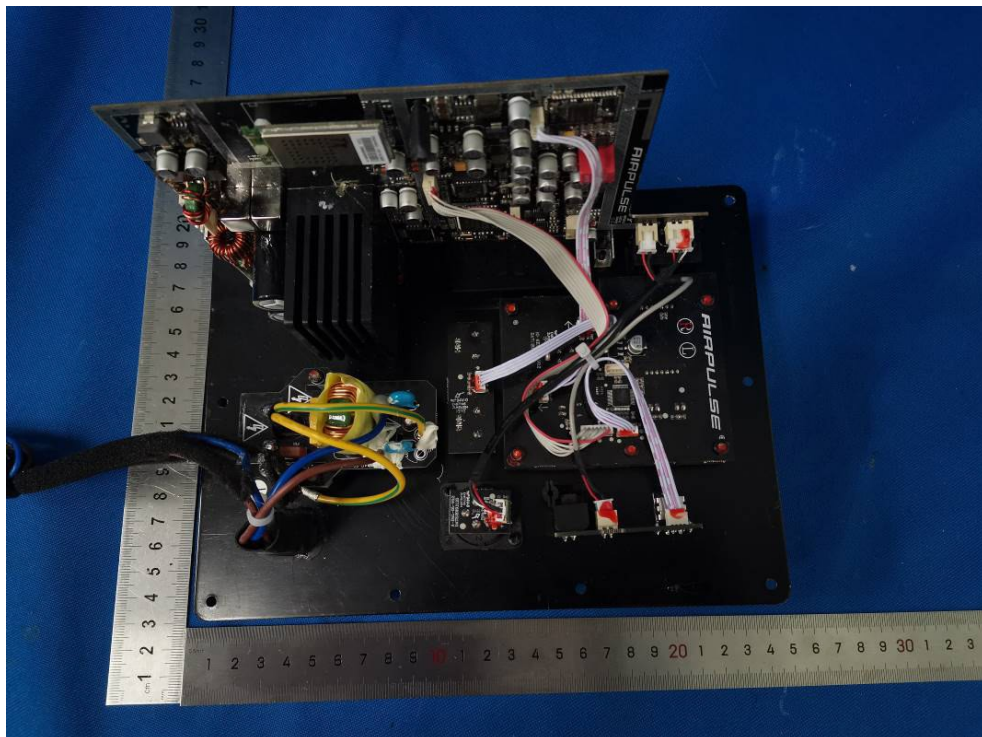


Fig. 2: Internal view_2 of active speaker



Fig. 3: Internal view_3 of active speaker



Fig. 4: Internal view_1 of passive speaker

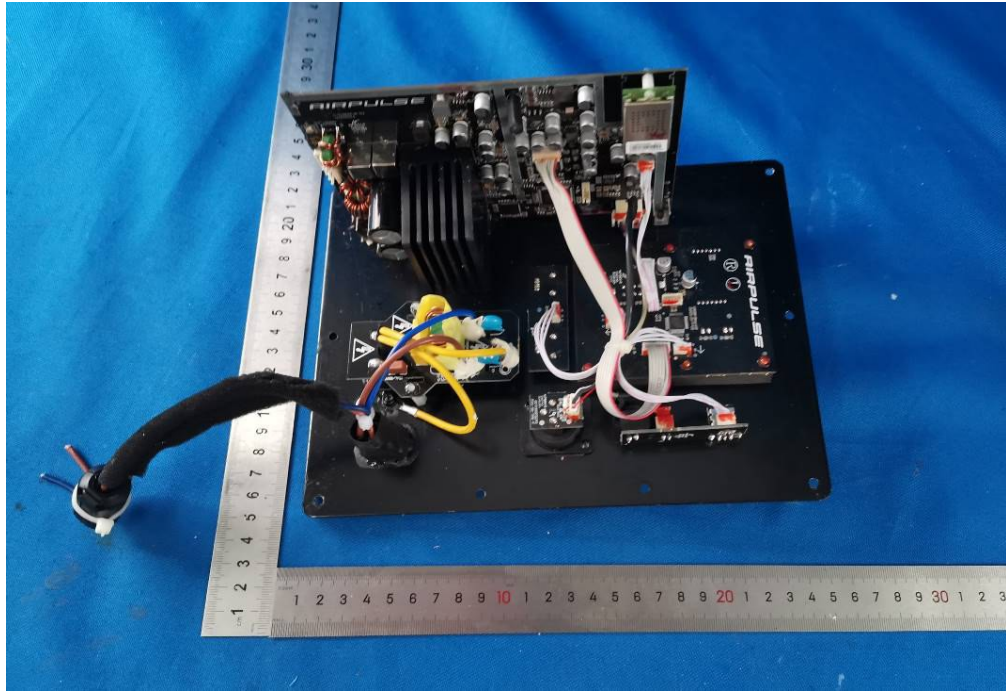


Fig. 5: Internal view_2 of passive speaker



Fig. 6: power board top view with Mylar sheet (in both active speaker and passive speaker)



Fig. 7: Power board bottom view with Mylar sheet (in both active speaker and passive speaker)

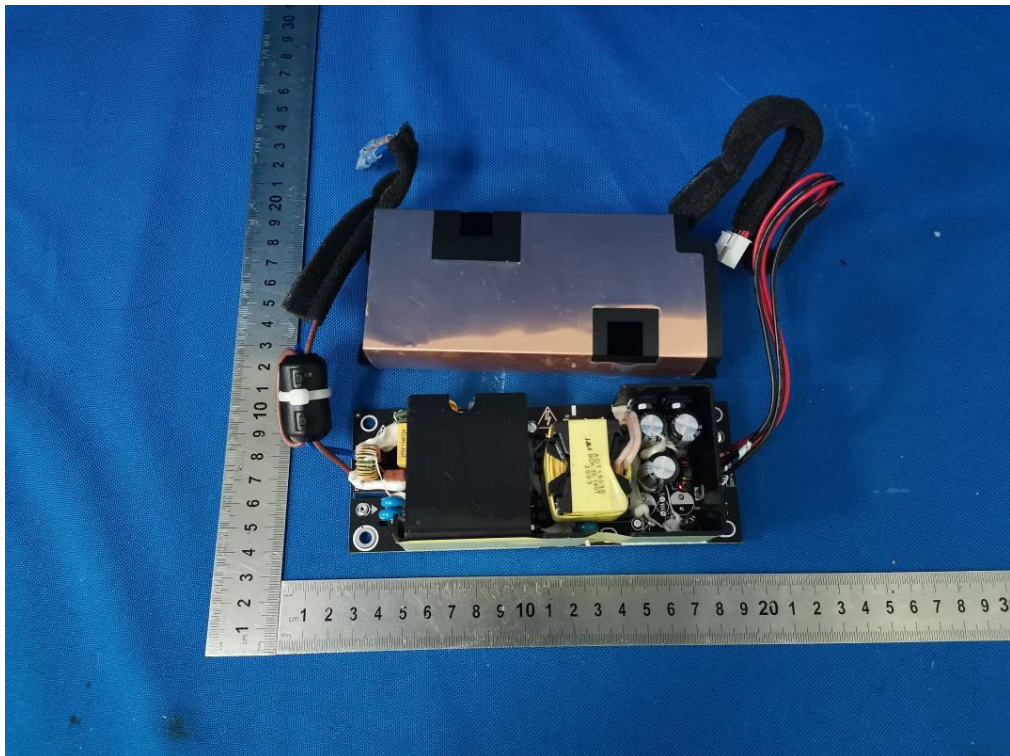


Fig. 8: Power board top view_1 (in both active speaker and passive speaker)



Fig. 9: Power board top view_2 (in both active speaker and passive speaker)



Fig. 10: Power board bottom view (in both active speaker and passive speaker)

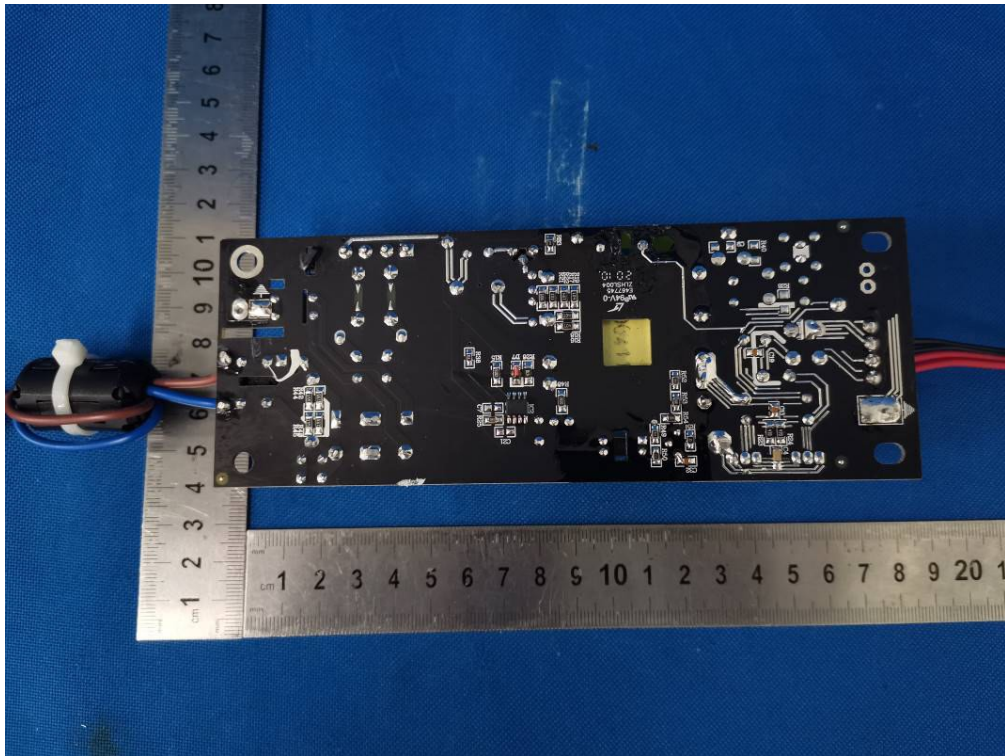


Fig. 11: Power board bottom view (in both active speaker and passive speaker)

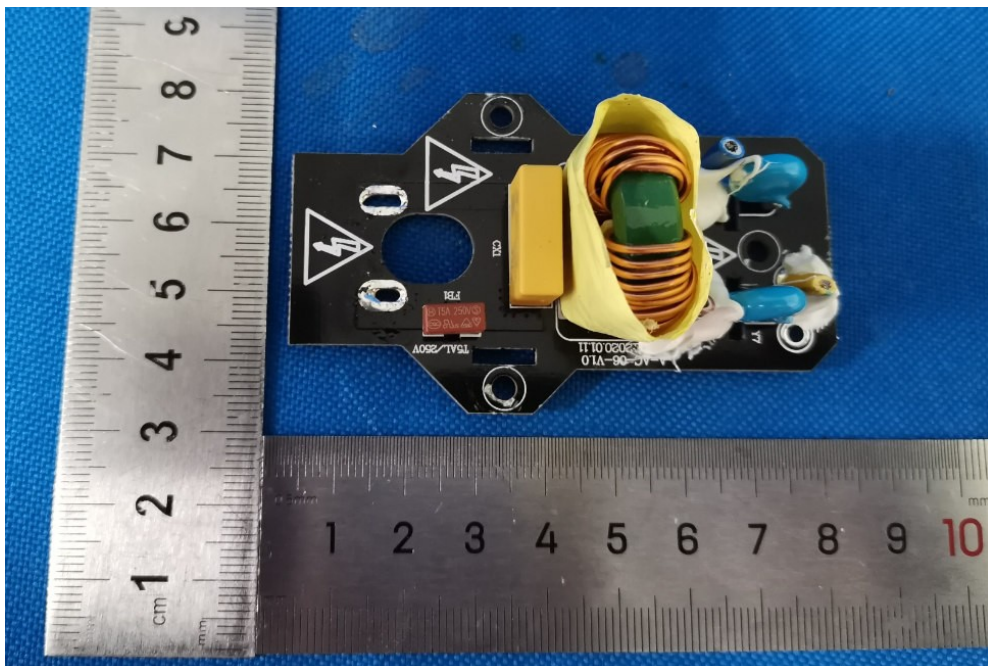


Fig. 12: Primary board top view (in both active speaker and passive speaker)

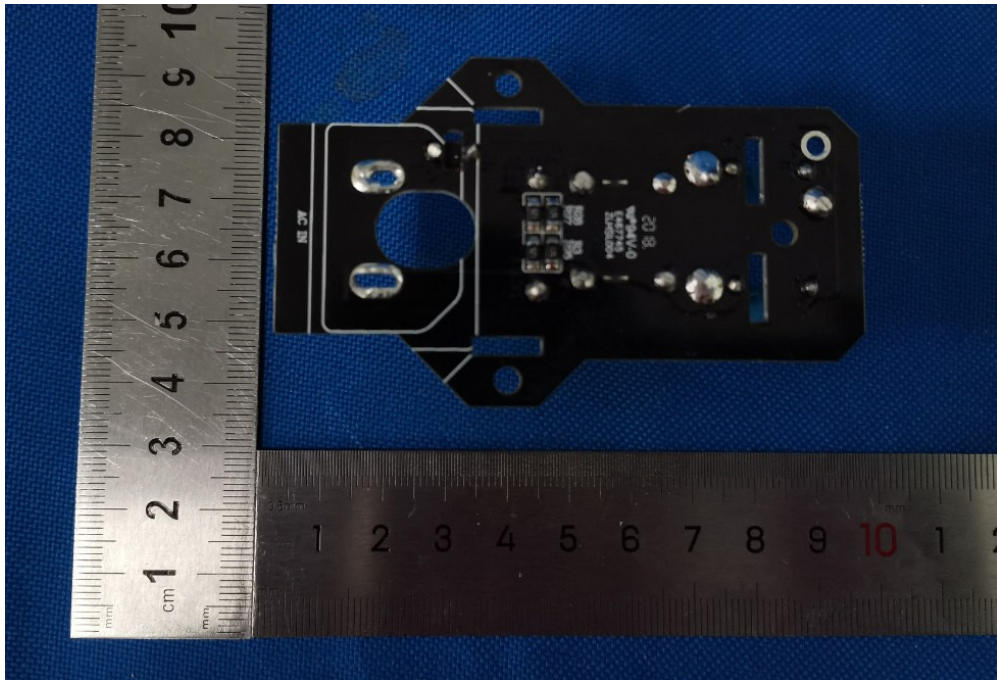


Fig. 13: Primary board bottom view (in both active speaker and passive speaker)

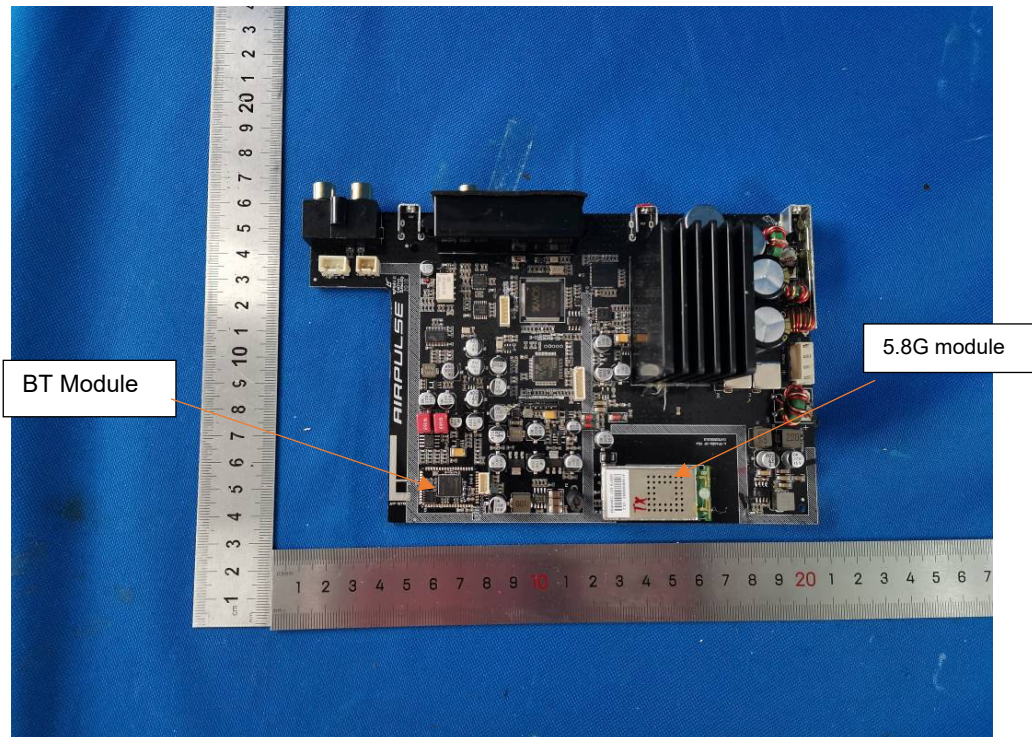


Fig. 14: Main board view -1 in active speaker

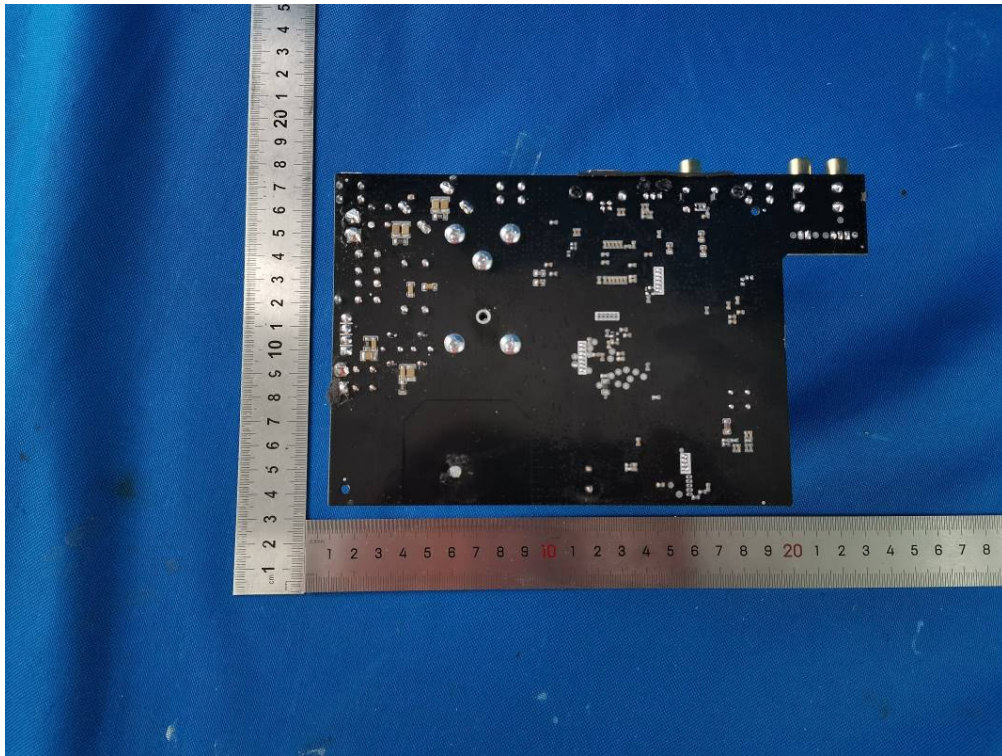


Fig. 15: Main board view -2 in active speaker

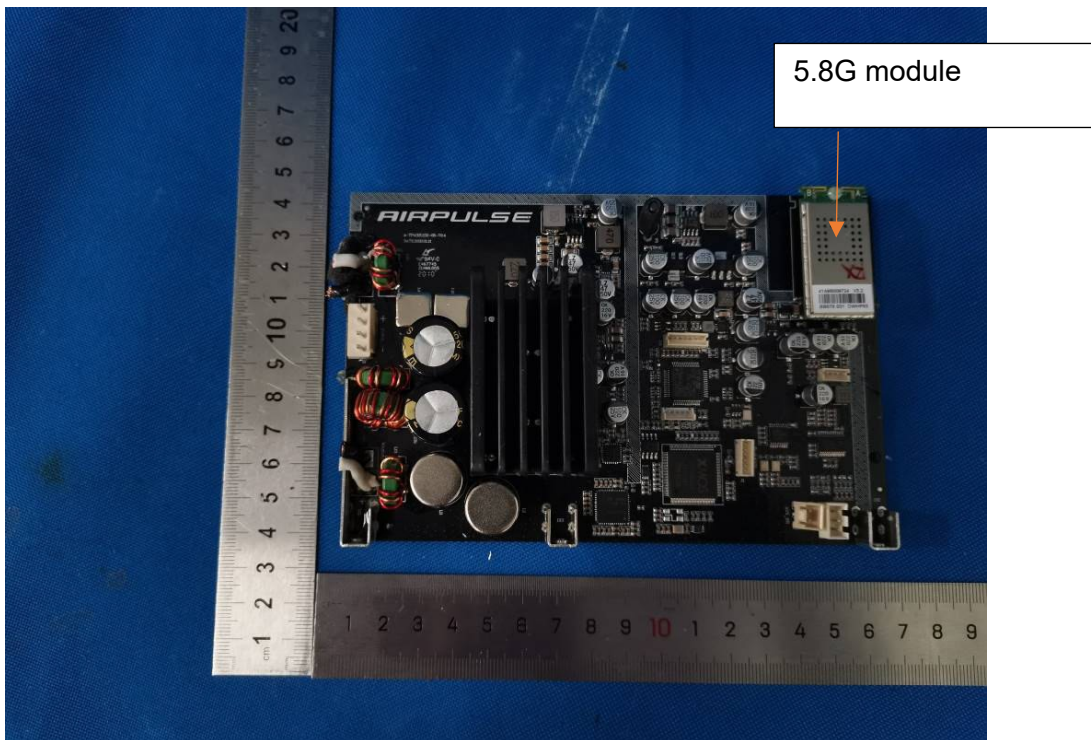


Fig. 16: Main board view -1 in passive speaker

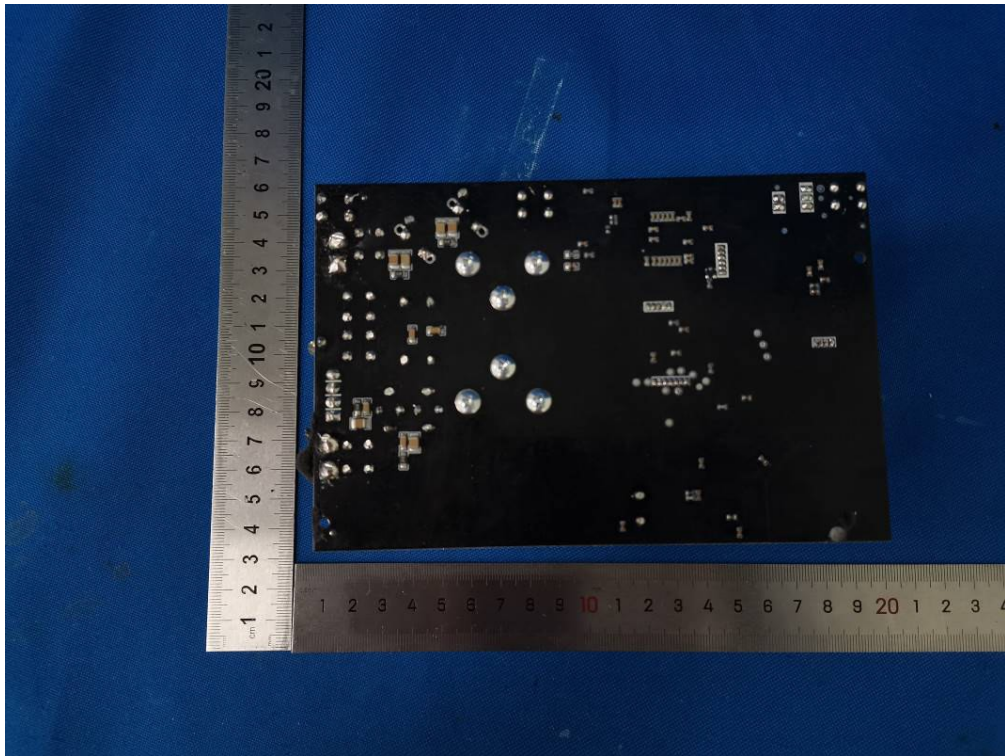


Fig. 17: Main board view -2 in passive speaker

